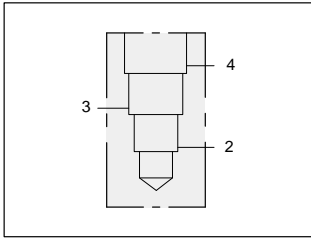




# LINE MOUNT BODIES

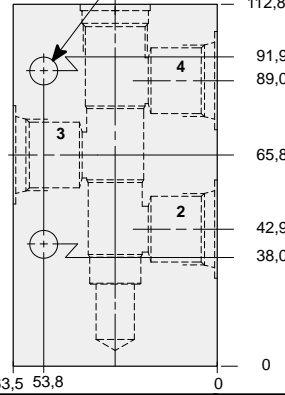
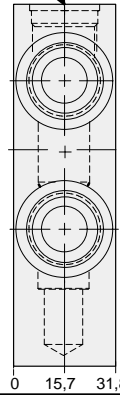


- Aluminium rated to 210 bar and SG Iron rated to 350 bar.



## Body for flow divider/combiner applications.

T-31A Cavity  
Locating Shoulder  
Depth 2,0 mm.



Mounting Holes:  
8,6 mm. diameter  
through hole  
2 places.

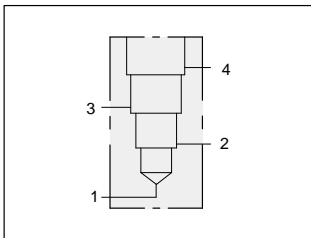
### TYPICAL CARTRIDGES USED WITH THIS BODY

FSDB - ***	Page	7.08
FSCD - ***	Page	7.08
FSBA - ***	Page	7.10
FSCA - ***	Page	7.10
FSBS - ***	Page	7.12
FSCS - ***	Page	7.12
FSCH - ***	Page	7.14
DSCH - ***	Page	10.06

Instructions for ordering complete cartridge and body assemblies. Page viii

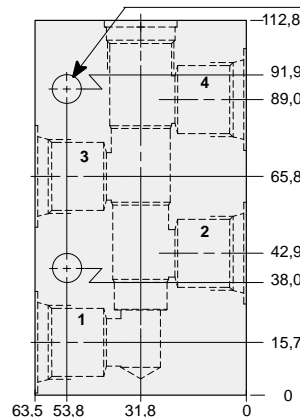
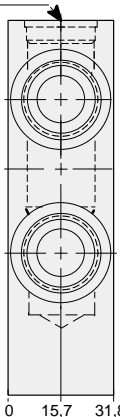
Pressure ratings, material specifications. Page 11.02

Ports 2, 3 & 4	ALUMINIUM		SG IRON	
	Model Code	List Price	Model Code	List Price
.25 NPTF	MMA		MMA/S	
.375 NPTF	MMB		MMB/S	
.50 NPTF	MMC		MMC/S	
SAE-6	MMI		MMI/S	
SAE-8	MMJ		MMJ/S	
SAE-10	MMK		MMK/S	
.25 BSPP	MMT		MMT/S	
.375 BSPP	MMU		MMU/S	
.50 BSPP	MMV		MMV/S	



## Four port body.

T-31A Cavity  
Locating Shoulder  
Depth 2,0 mm.



Mounting Holes:  
8,6 mm. diameter  
through hole  
2 places.

### TYPICAL CARTRIDGES USED WITH THIS BODY

Instructions for ordering complete cartridge and body assemblies. Page viii

Pressure ratings, material specifications. Page 11.02

Ports 2, 3 & 4	ALUMINIUM		SG IRON	
	Model Code	List Price	Model Code	List Price
.25 NPTF	MNA		MNA/S	
.375 NPTF	MNB		MNB/S	
.50 NPTF	MNC		MNC/S	
SAE-6	MNI		MNI/S	
SAE-8	MNJ		MNJ/S	
SAE-10	MNK		MNK/S	
.25 BSPP	MNT		MNT/S	
.375 BSPP	MNU		MNU/S	
.50 BSPP	MNV		MNV/S	