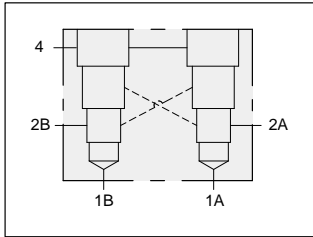




# LINE MOUNT BODIES



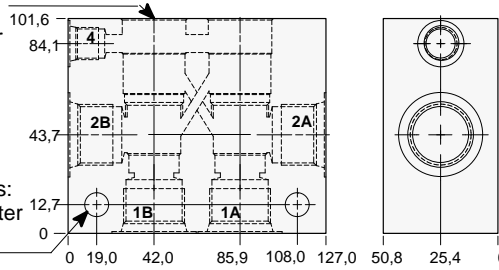
- Aluminium rated to 210 bar and SG Iron rated to 350 bar.



**Two cavity 90 degree cross-piloted body with common port 4 for load control applications.**

T-22A Cavity  
Locating Shoulder  
Depth 33,3 mm.  
2 places.

Mounting Holes:  
10,7 mm. diameter  
through hole.  
2 places.

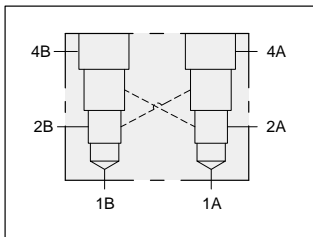


**TYPICAL CARTRIDGES  
USED WITH THIS BODY**

- CWEA - \*\*\* Page 4.18
- CWEG - \*\*\* Page 4.20
- CVEV - \*\*\* Page 4.22

Instructions for ordering complete cartridge and body assemblies. Page iii  
Pressure ratings, material specifications. Page 11.02

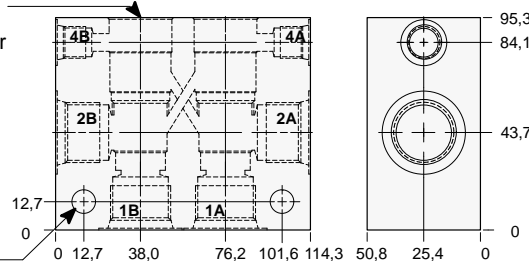
Ports 1A, 1B, 2A, & 2B	Port 4	ALUMINIUM		SG IRON	
		Model Code	List Price	Model Code	List Price
.25 NPTF	.25 NPTF	XIA		XIA/S	
.375 NPTF	.25 NPTF	XIB		XIB/S	
.50 NPTF	.25 NPTF	XIC		XIC/S	
.75 NPTF	.25 NPTF	XID		XID/S	
SAE-6	SAE-6	XII		XII/S	
SAE-8	SAE-6	XIJ		XIJ/S	
SAE-10	SAE-6	XIK		XIK/S	
SAE-12	SAE-6	XIL		XIL/S	
.25 BSPP	.25 BSPP	XIT		XIT/S	
.375 BSPP	.25 BSPP	XIU		XIU/S	
.50 BSPP	.25 BSPP	XIV		XIV/S	
.75 BSPP	.25 BSPP	XIW		XIW/S	



**Two cavity 90 degree cross-piloted body with independent port 4 for load control applications.**

T-22A Cavity  
Locating Shoulder  
Depth 33,3 mm.  
2 places.

Mounting Holes:  
10,7 mm. diameter  
through hole.  
2 places.



**TYPICAL CARTRIDGES  
USED WITH THIS BODY**

- CWEA - \*\*\* Page 4.18
- CWEG - \*\*\* Page 4.20
- CVEV - \*\*\* Page 4.22

Instructions for ordering complete cartridge and body assemblies. Page iii  
Pressure ratings, material specifications. Page 11.02

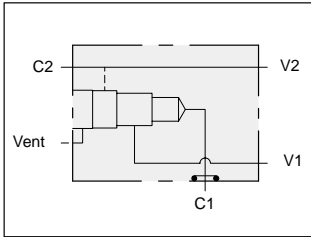
Ports 1A, 1B, 2A, & 2B	Ports 4A & 4B	ALUMINIUM		SG IRON	
		Model Code	List Price	Model Code	List Price
.25 NPTF	.25 NPTF	XRA		XRA/S	
.375 NPTF	.25 NPTF	XRJ		XRJ/S	
.50 NPTF	.25 NPTF	XRC		XRC/S	
.75 NPTF	.25 NPTF	XRD		XRD/S	
SAE-6	SAE-6	XRI		XRI/S	
SAE-8	SAE-6	XRJ		XRJ/S	
SAE-10	SAE-6	XRK		XRK/S	
SAE-12	SAE-6	XRL		XRL/S	
.25 BSPP	.25 BSPP	XRT		XRT/S	
.375 BSPP	.25 BSPP	XRU		XRU/S	
.50 BSPP	.25 BSPP	XRV		XRV/S	
.75 BSPP	.25 BSPP	XRW		XRW/S	



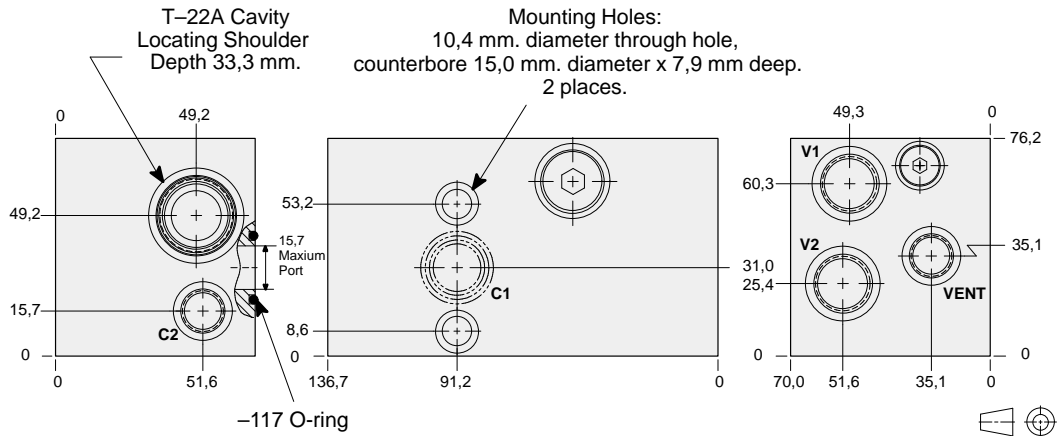
# LINE MOUNT BODIES



- Aluminium rated to 210 bar and SG Iron rated to 350 bar.



## Gasket mount body for load control applications.



### TYPICAL CARTRIDGES USED WITH THIS BODY

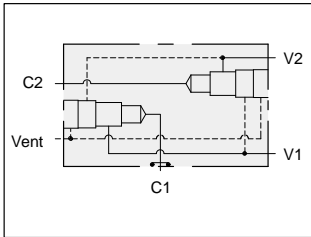
- CWEA - \*\*\* Page 4.18
- CWEG - \*\*\* Page 4.20
- CVEV - \*\*\* Page 4.22

Cartridge seal type determines O-ring type.

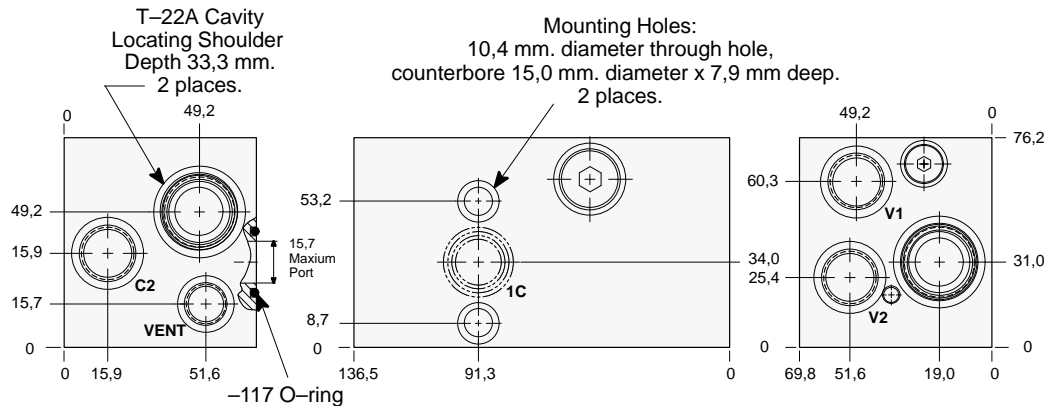
Instructions for ordering complete cartridge and body assemblies. Page viii

Pressure ratings, material specifications. Page 11.02

Ports C2, V1, & V2	Vent Port	ALUMINIUM		SG IRON	
		Model Code	List Price	Model Code	List Price
.50 NPTF	.25 NPTF	<b>WJB</b>		<b>WJB/S</b>	
SAE-8	SAE-6	<b>WJC</b>		<b>WJC/S</b>	
.50 BSPP	.25 BSPP	<b>WJD</b>		<b>WJD/S</b>	



## Two cavity gasket mount dual load control body.



### TYPICAL CARTRIDGES USED WITH THIS BODY

- CWEA - \*\*\* Page 4.18
- CWEG - \*\*\* Page 4.20
- CVEV - \*\*\* Page 4.22

Cartridge seal type determines O-ring type.

Instructions for ordering complete cartridge and body assemblies. Page viii

Pressure ratings, material specifications. Page 11.02

Ports C2, V1, & V2	Vent Port	ALUMINIUM		SG IRON	
		Model Code	List Price	Model Code	List Price
.50 NPTF	.25 NPTF	<b>VZN</b>		<b>VZN/S</b>	
SAE-8	SAE-6	<b>VZO</b>		<b>VZO/S</b>	
.50 BSPP	.25 BSPP	<b>VZP</b>		<b>VZP/S</b>	