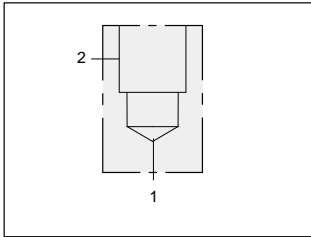




# LINE MOUNT BODIES



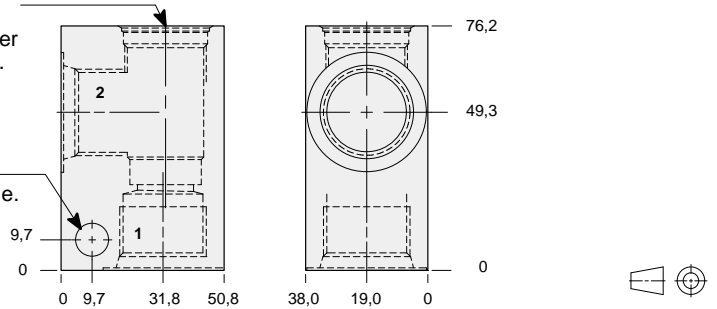
- Aluminium rated to 210 bar and SG Iron rated to 350 bar.



## 90 degree body.

T-3A Cavity  
Locating Shoulder  
Depth 1,5 mm.

Mounting Hole:  
10,7 mm. diameter through hole.



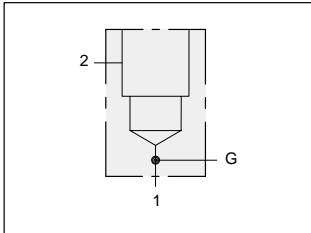
### TYPICAL CARTRIDGES USED WITH THIS BODY

RPGC - ***	Page	1.06
RPGE - ***	Page	1.08
RDFA - ***	Page	1.10
RQGB - ***	Page	1.12
RPGD - ***	Page	1.14
RBAA - ***	Page	1.16
RBAB - ***	Page	1.14
NQEB - ***	Page	10.16

Instructions for ordering complete cartridge and body assemblies. Page viii

Pressure ratings, material specifications. Page 11.02

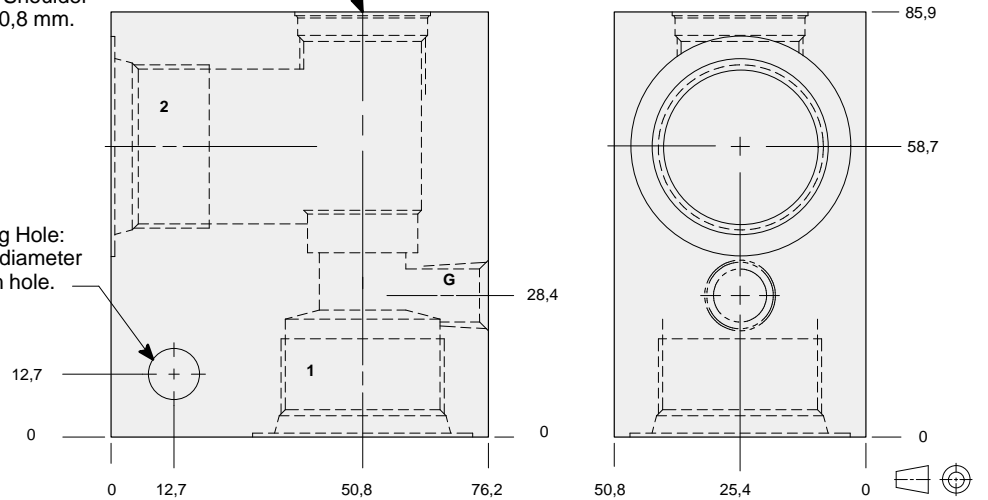
Ports 1 & 2	ALUMINIUM		SG IRON	
	Model Code	List Price	Model Code	List Price
.25 NPTF	CAA		CAA/S	
.375 NPTF	CAB		CAB/S	
.50 NPTF	CAC		CAC/S	
.75 NPTF	CAD		CAD/S	
SAE-4	CAH		CAH/S	
SAE-6	CAI		CAI/S	
SAE-8	CAJ		CAJ/S	
SAE-10	CAK		CAK/S	
SAE-12	CAL		CAL/S	
.25 BSPP	CAT		CAT/S	
.375 BSPP	CAU		CAU/S	
.50 BSPP	CAV		CAV/S	
.75 BSPP	CAW		CAW/S	



## 90 degree body with gauge port.

T-3A Cavity  
Locating Shoulder  
Depth 0,8 mm.

Mounting Hole:  
10,7 mm. diameter  
through hole.



### TYPICAL CARTRIDGES USED WITH THIS BODY

RPGC - ***	Page	1.06
RPGE - ***	Page	1.08
RDFA - ***	Page	1.10
RQGB - ***	Page	1.12
RPGD - ***	Page	1.14
NQEB - ***	Page	10.16

Instructions for ordering complete cartridge and body assemblies. Page viii

Pressure ratings, material specifications. Page 11.02

Ports 1 & 2	Gauge Port	ALUMINIUM		SG IRON	
		Model Code	List Price	Model Code	List Price
1.00 NPTF	.25 NPTF	CAE		CAE/S	
SAE-16	.25 NPTF	CAM		CAM/S	
1.00 BSPP	.25 BSPP	CAX		CAX/S	

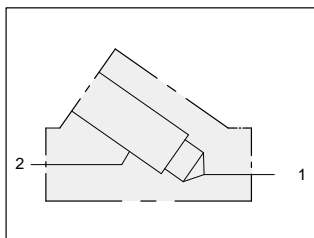
Series 2 T-3A



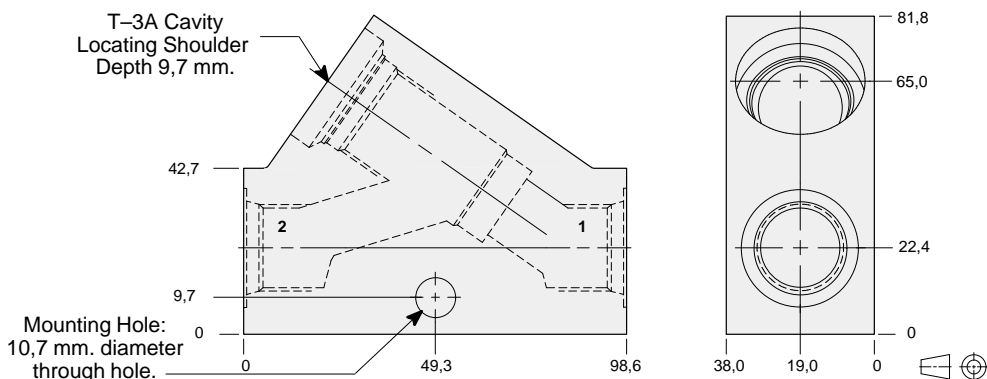
# LINE MOUNT BODIES



- Aluminium rated to 210 bar and SG Iron rated to 350 bar.



## Inline body.



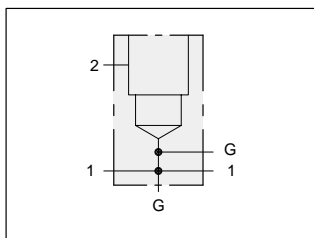
### TYPICAL CARTRIDGES USED WITH THIS BODY

RPGC - ***	Page	1.06
RPGE - ***	Page	1.08
RDFA - ***	Page	1.10
RQGB - ***	Page	1.12
RPGD - ***	Page	1.14
RBAB - ***	Page	1.14
RBAA - ***	Page	1.16
NQEB - ***	Page	10.16

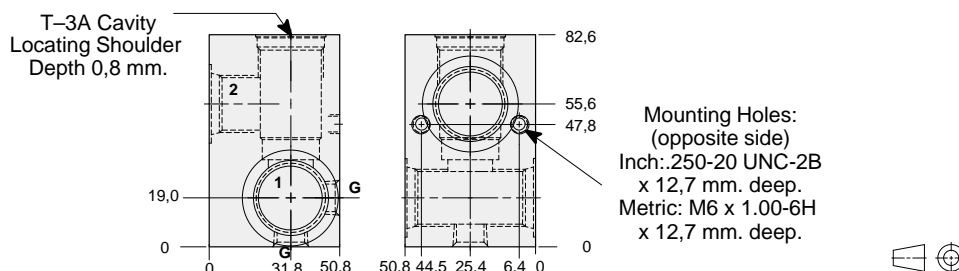
Instructions for ordering complete cartridge and body assemblies. Page viii

Pressure ratings, material specifications. Page 11.02

Ports 1 & 2	ALUMINIUM		SG IRON	
	Model Code	List Price	Model Code	List Price
.375 NPTF	<b>CGB</b>		<b>CGB/S</b>	
.50 NPTF	<b>CGC</b>		<b>CGC/S</b>	
.75 NPTF	<b>CGD</b>		<b>CGD/S</b>	
SAE-6	<b>CGI</b>		<b>CGI/S</b>	
SAE-8	<b>CGJ</b>		<b>CGJ/S</b>	
SAE-10	<b>CGK</b>		<b>CGK/S</b>	
.375 BSPP	<b>CGU</b>		<b>CGU/S</b>	
.50 BSPP	<b>CGV</b>		<b>CGV/S</b>	
.75 BSPP	<b>CGW</b>		<b>CGW/S</b>	



## Through port body with gauge ports.



### TYPICAL CARTRIDGES USED WITH THIS BODY

RPGC - ***	Page	1.06
RPGE - ***	Page	1.08
RDFA - ***	Page	1.10
RQGB - ***	Page	1.12
RPGD - ***	Page	1.14
RBAB - ***	Page	1.14
RBAA - ***	Page	1.16
NQEB - ***	Page	10.16

Instructions for ordering complete cartridge and body assemblies. Page viii

Pressure ratings, material specifications. Page 11.02

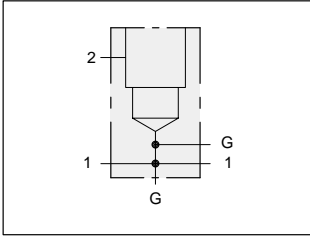
Mounting Hole Dimensions	Ports 1 & 2	Gauge Port	ALUMINIUM		SG IRON	
			Model Code	List Price	Model Code	List Price
Inch	.25 NPTF	.25 NPTF	<b>CEA</b>		<b>CEA/S</b>	
Inch	.375 NPTF	.25 NPTF	<b>CEB</b>		<b>CEB/S</b>	
Inch	.50 NPTF	.25 NPTF	<b>CEC</b>		<b>CEC/S</b>	
Inch	.75 NPTF	.25 NPTF	<b>CED</b>		<b>CED/S</b>	
Inch	SAE-4	.25 NPTF	<b>CEH</b>		<b>CEH/S</b>	
Inch	SAE-6	.25 NPTF	<b>CEI</b>		<b>CEI/S</b>	
Inch	SAE-8	.25 NPTF	<b>CEJ</b>		<b>CEJ/S</b>	
Inch	SAE-10	.25 NPTF	<b>CEK</b>		<b>CEK/S</b>	
Inch	SAE-12	.25 NPTF	<b>CEL</b>		<b>CEL/S</b>	
Metric	.25 BSPP	.25 BSPP	<b>CET</b>		<b>CET/S</b>	
Metric	.375 BSPP	.25 BSPP	<b>CEU</b>		<b>CEU/S</b>	
Metric	.50 BSPP	.25 BSPP	<b>CEV</b>		<b>CEV/S</b>	
Metric	.75 BSPP	.25 BSPP	<b>CEW</b>		<b>CEW/S</b>	



# LINE MOUNT BODIES



- Aluminium rated to 210 bar and SG Iron rated to 350 bar.



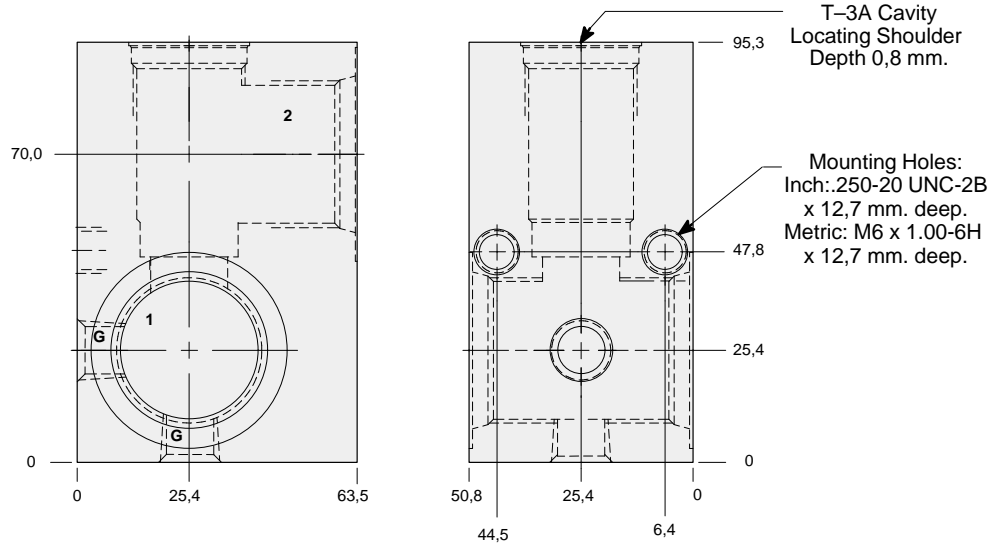
## Through port body with gauge ports.

### TYPICAL CARTRIDGES USED WITH THIS BODY

RPGC - ***	Page	1.06
RPGE - ***	Page	1.08
RDFA - ***	Page	1.10
RQGB - ***	Page	1.12
RPGD - ***	Page	1.14
NQEB - ***	Page	10.16

Instructions for ordering complete cartridge and body assemblies. Page viii

Pressure ratings, material specifications. Page 11.02



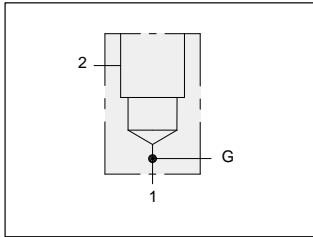
Mounting Hole Dimensions	Ports 1 & 2	Gauge Port	ALUMINIUM		SG IRON	
			Model Code	List Price	Model Code	List Price
Inch	1.00 NPTF	.25 NPTF	<b>CEE</b>		<b>CEE/S</b>	
Inch	SAE-16	.25 NPTF	<b>CEM</b>		<b>CEM/S</b>	
Metric	1.00 BSPP	.25 BSPP	<b>CEX</b>		<b>CEX/S</b>	



# LINE MOUNT BODIES



- Aluminium rated to 210 bar and SG Iron rated to 350 bar.

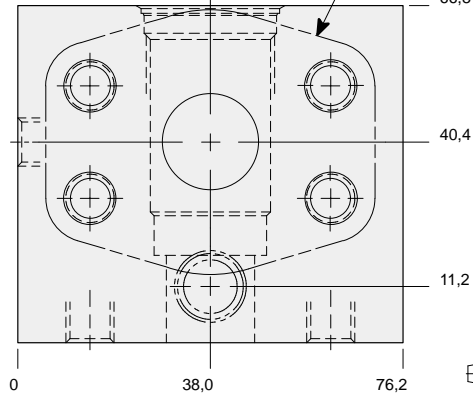
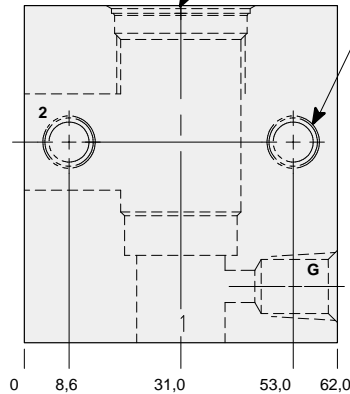


## 90 degree .75" SAE Code 61 flange port body with gauge port.

Mounting Holes:  
(opposite side)  
Inch: .375-16 UNC-2B  
x 15,7 mm. deep.  
Metric: M10 x 1.50-6H  
x 15,7 mm. deep.  
2 places.

T-3A Cavity  
Locating Shoulder  
Depth 1,5 mm.

.75" SAE Code 61  
4-Bolt Flange Pattern  
2 places

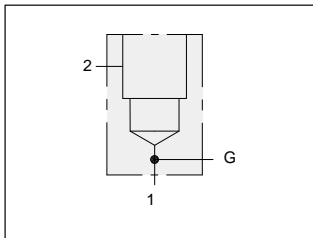


### TYPICAL CARTRIDGES USED WITH THIS BODY

RPGC - ***	Page	1.06
RPGE - ***	Page	1.08
RDFA - ***	Page	1.10
RQGB - ***	Page	1.12
RPGD - ***	Page	1.14
NQEB - ***	Page	10.16

Instructions for ordering complete cartridge and body assemblies.	Page	viii
Pressure ratings, material specifications.	Page	11.02
SAE Specifications.	Page	11.03

Mounting Hole Dimensions	Gauge Port	ALUMINIUM		SG IRON	
		Model Code	List Price	Model Code	List Price
Inch	.25 NPTF	CAO		CAO/S	
Metric	.25 BSPP	CAO/M		CAO/T	

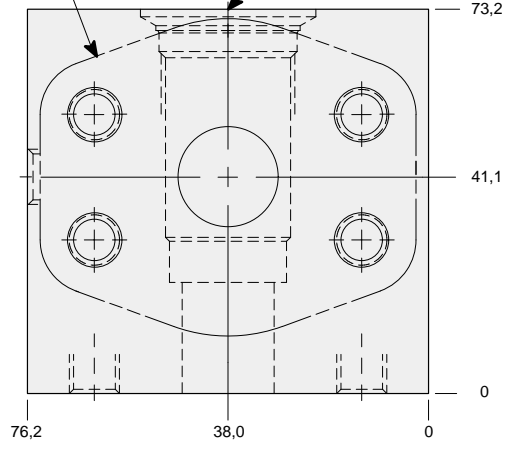
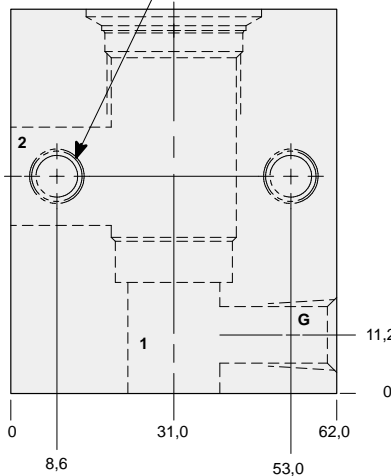


## 90 degree .75" SAE Code 62 flange port body with gauge port.

Mounting Holes:  
(opposite side)  
Inch: .375-16 UNC-2B  
x 15,7 mm. deep.  
Metric: M10 x 1.50-6H  
x 15,7 mm. deep.  
2 places.

.75" SAE Code 62  
4-Bolt Flange Pattern  
2 places.

T-3A Cavity  
Locating Shoulder  
Depth 1,5 mm.



### TYPICAL CARTRIDGES USED WITH THIS BODY

RPGC - ***	Page	1.06
RPGE - ***	Page	1.08
RDFA - ***	Page	1.10
RQGB - ***	Page	1.12
RPGD - ***	Page	1.14
NQEB - ***	Page	10.16

Instructions for ordering complete cartridge and body assemblies.	Page	viii
Pressure ratings, material specifications.	Page	11.02
SAE Specifications.	Page	11.03

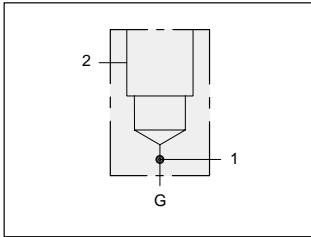
Mounting Hole Dimensions	Gauge Port	ALUMINIUM		SG IRON	
		Model Code	List Price	Model Code	List Price
Inch	.25 NPTF	CA3		CA3/S	
Metric	.25 BSPP	CA3/M		CA3/T	



# LINE MOUNT BODIES



- Aluminium rated to 210 bar and SG Iron rated to 350 bar.

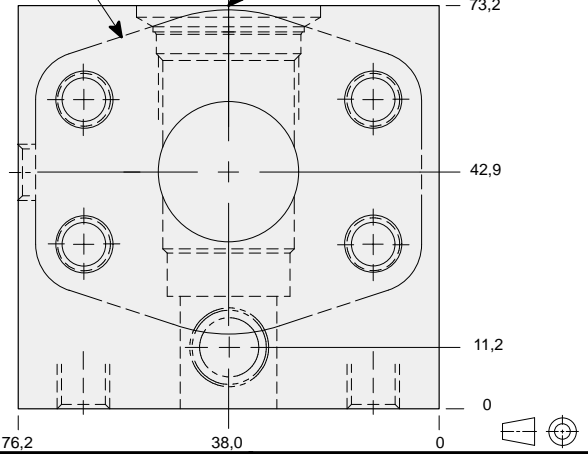
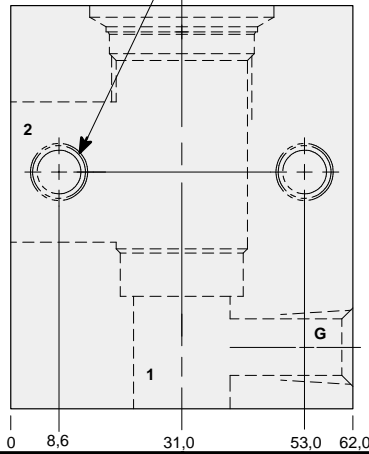


## 90 degree 1.00" SAE Code 61 flange port body with gauge port.

Mounting Holes:  
(opposite side)  
Inch: .375-16 UNC-2B  
x 15,7 mm. deep.  
Metric: M10 x 1.50-6H  
x 15,7 mm. deep.  
2 places.

1.00" SAE Code 61  
4-Bolt Flange Pattern  
2 places.

T-3A Cavity  
Locating Shoulder  
Depth 4,8 mm.



### TYPICAL CARTRIDGES USED WITH THIS BODY

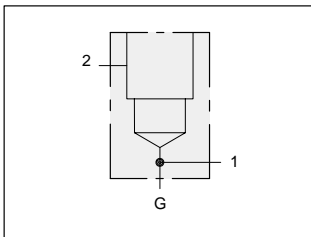
RPGC - ***	Page	1.06
RPGE - ***	Page	1.08
RDFA - ***	Page	1.10
RQGB - ***	Page	1.12
RPGD - ***	Page	1.14
NQEB - ***	Page	10.16

Instructions for ordering complete cartridge and body assemblies. Page viii

Pressure ratings, material specifications. Page 11.02

SAE Specifications. Page 11.03

Mounting Hole Dimensions	Gauge Port	ALUMINIUM		SG IRON	
		Model Code	List Price	Model Code	List Price
Inch	.25 NPTF	<b>CAP</b>		<b>CAP/S</b>	
Metric	.25 BSPP	<b>CAP/M</b>		<b>CAP/T</b>	

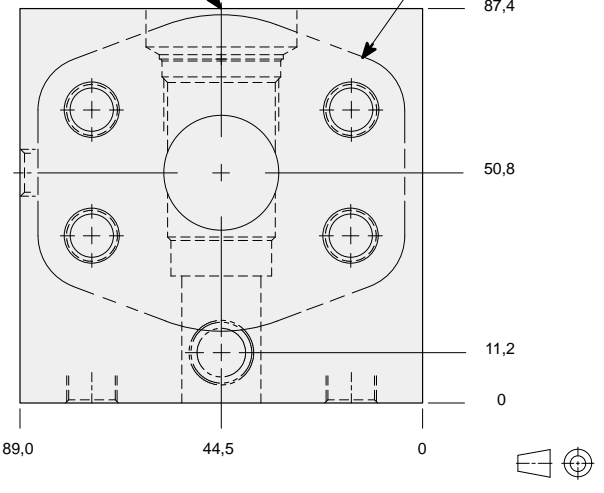
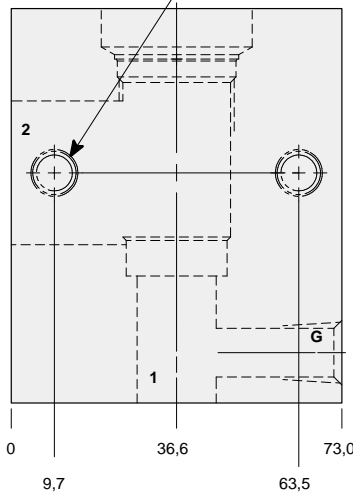


## 90 degree 1.00" SAE Code 62 flange port body with gauge port.

Mounting Holes:  
(opposite side)  
Inch: .375-16 UNC-2B  
x 15,7 mm. deep.  
Metric: M10 x 1.50-6H  
x 15,7 mm. deep.  
2 places.

T-3A Cavity  
Locating Shoulder  
Depth 11,2 mm.

1.00" SAE Code 62  
4-Bolt Flange Pattern  
2 places.



### TYPICAL CARTRIDGES USED WITH THIS BODY

RPGC - ***	Page	1.06
RPGE - ***	Page	1.08
RDFA - ***	Page	1.10
RQGB - ***	Page	1.12
RPGD - ***	Page	1.14
NQEB - ***	Page	10.16

Instructions for ordering complete cartridge and body assemblies. Page viii

Pressure ratings, material specifications. Page 11.02

SAE Specifications. Page 11.03

Mounting Hole Dimensions	Gauge Port	ALUMINIUM		SG IRON	
		Model Code	List Price	Model Code	List Price
Inch	.25 NPTF	<b>CA4</b>		<b>CA4/S</b>	
Metric	.25 BSPP	<b>CA4/M</b>		<b>CA4/T</b>	

Series 2 T-3A

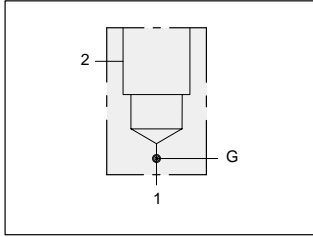


# LINE MOUNT BODIES



- Aluminium rated to 210 bar and SG Iron rated to 350 bar.

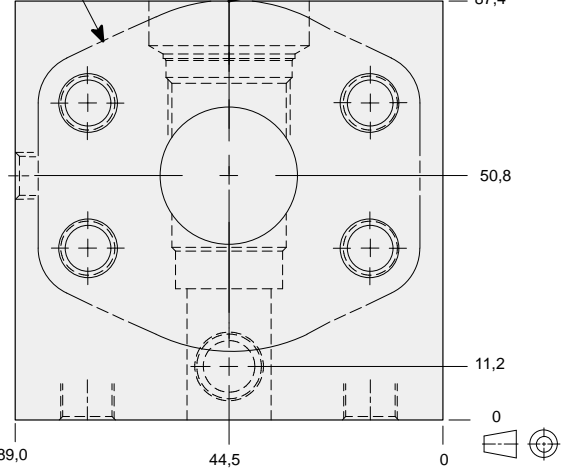
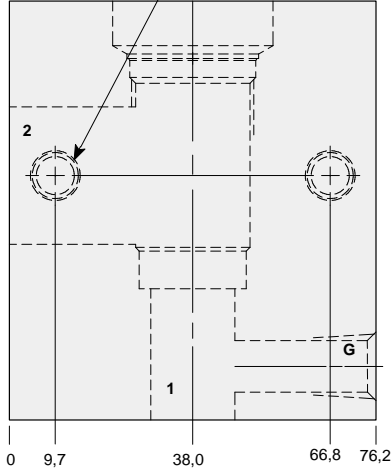
## 90 degree 1.25" SAE Code 61 flange port body with gauge port.



Mounting Holes:  
(opposite side)  
Inch: .375-16 UNC-2B  
x 15,7 mm. deep.  
Metric: M10 x 1.50-6H  
x 15,7 mm. deep.  
2 places.

1.25" SAE Code 61  
4-Bolt Flange Pattern  
2 places.

T-3A Cavity  
Locating Shoulder  
Depth 7,1 mm.



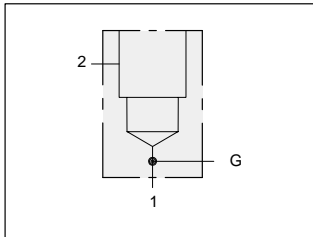
### TYPICAL CARTRIDGES USED WITH THIS BODY

RPGC - ***	Page	1.06
RPGE - ***	Page	1.08
RDFA - ***	Page	1.10
RQGB - ***	Page	1.12
RQGB - ***	Page	1.12
NQEB - ***	Page	10.16

Instructions for ordering complete cartridge and body assemblies.	Page	viii
Pressure ratings, material specifications.	Page	11.02
SAE Specifications.	Page	11.03

Mounting Hole Dimensions	Gauge Port	ALUMINIUM		SG IRON	
		Model Code	List Price	Model Code	List Price
Inch	.25 NPTF	CAQ		CAQ/S	
Metric	.25 BSPP	CAQ/M		CAQ/T	

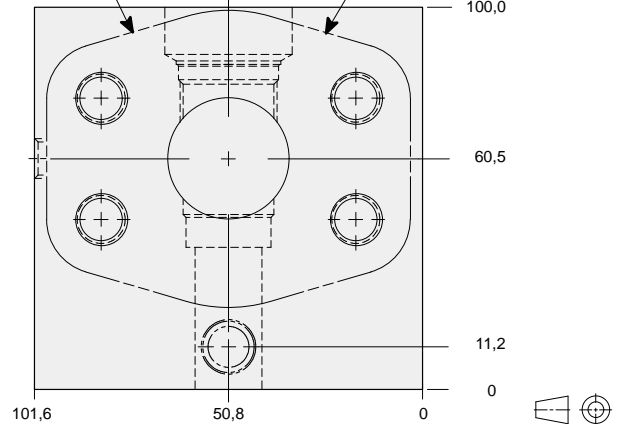
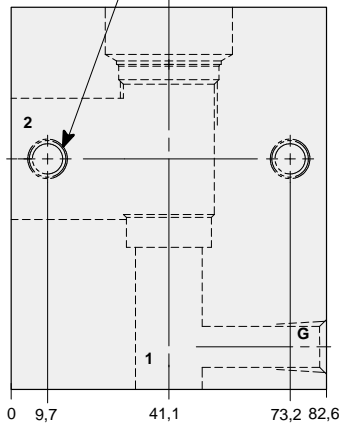
## 90 degree 1.25" SAE Code 62 flange port body with gauge port.



Mounting Holes:  
(opposite side)  
Inch: .375-16 UNC-2B  
x 15,7 mm. deep.  
Metric: M10 x 1.50-6H  
x 15,7 mm. deep.  
2 places.

T-3A Cavity  
Locating Shoulder  
Depth 15 mm.

1.25" SAE Code 62  
4-Bolt Flange Pattern  
2 places.



### TYPICAL CARTRIDGES USED WITH THIS BODY

RPGC - ***	Page	1.06
RPGE - ***	Page	1.08
RDFA - ***	Page	1.10
RQGB - ***	Page	1.12
RPGD - ***	Page	1.14
NQEB - ***	Page	10.16

Instructions for ordering complete cartridge and body assemblies.	Page	viii
Pressure ratings, material specifications.	Page	11.02
SAE Specifications.	Page	11.03

Mounting Hole Dimensions	Gauge Port	ALUMINIUM		SG IRON	
		Model Code	List Price	Model Code	List Price
Inch	.25 NPTF	CA5		CA5/S	
Metric	.25 BSPP	CA5/M		CA5/T	

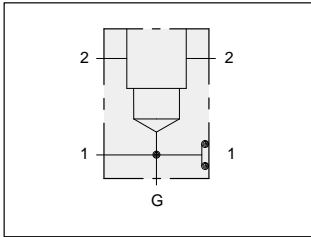
Series 2 T-3A



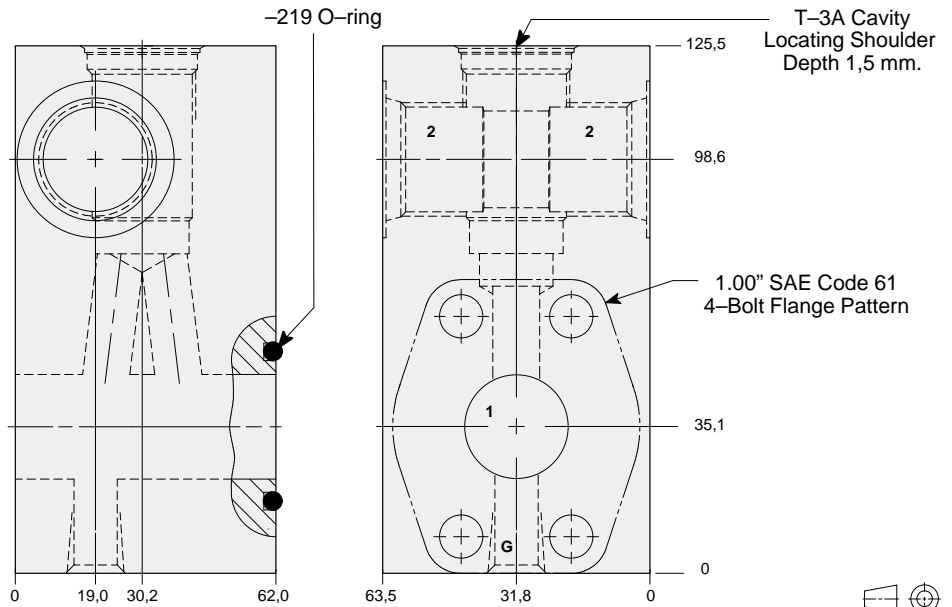
# LINE MOUNT BODIES



- Aluminium rated to 210 bar and SG Iron rated to 350 bar.



## Sandwich mount through port 1.00" SAE Code 61 body with gauge port.



### TYPICAL CARTRIDGES USED WITH THIS BODY

RPGC - ***	Page	1.06
RPGE - ***	Page	1.08
RDFA - ***	Page	1.10
RQGB - ***	Page	1.12
RPGD - ***	Page	1.14
NQEB - ***	Page	10.16

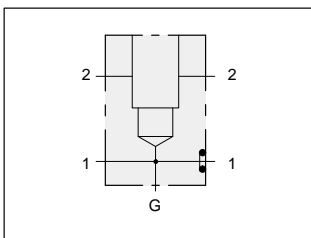
Cartridge seal type determines O-ring type.

Instructions for ordering complete cartridge and body assemblies. Page viii

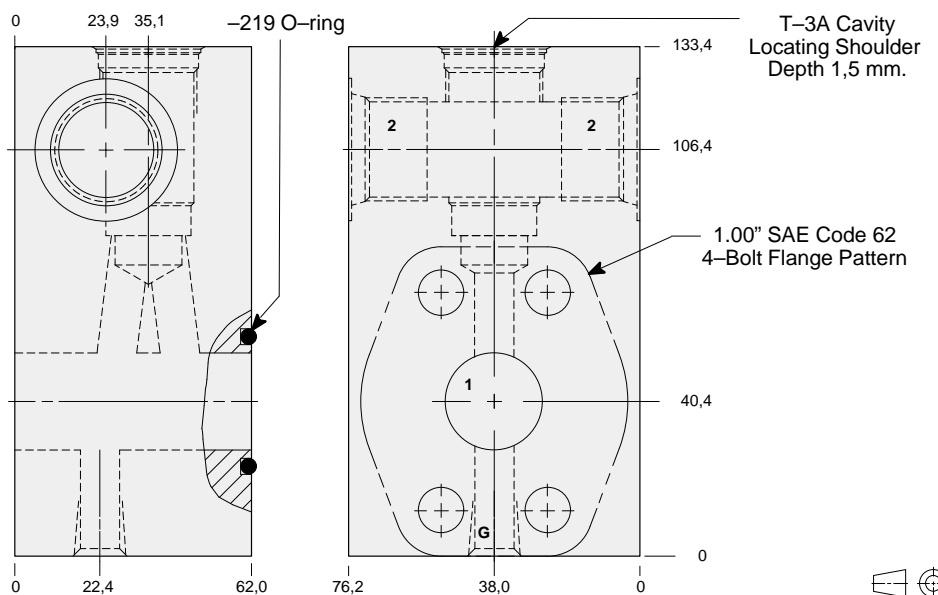
Pressure ratings, material specifications. Page 11.02

SAE Specifications. Page 11.03

Mounting Hole Dimensions	Port 2	Gauge Port	ALUMINIUM		SG IRON	
			Model Code	List Price	Model Code	List Price
Inch	.75 NPTF	.25 NPTF	ZQL		ZQL/S	
Inch	SAE-12	.25 NPTF	ZQK		ZQK/S	
Metric	.75 BSPP	.25 BSPP	ZQJ/M		ZQJ/T	



## Sandwich mount through port 1.00" SAE Code 62 body with gauge port.



### TYPICAL CARTRIDGES USED WITH THIS BODY

RPGC - ***	Page	1.06
RPGE - ***	Page	1.08
RDFA - ***	Page	1.10
RQGB - ***	Page	1.12
RPGD - ***	Page	1.14
NQEB - ***	Page	10.16

Cartridge seal type determines O-ring type.

Instructions for ordering complete cartridge and body assemblies. Page viii

Pressure ratings, material specifications. Page 11.02

SAE Specifications. Page 11.03

Mounting Hole Dimensions	Port 2	Gauge Port	ALUMINIUM		SG IRON	
			Model Code	List Price	Model Code	List Price
Inch	.75 NPTF	.25 NPTF	ZCH		ZCH/S	
Inch	SAE-12	.25 NPTF	ZCG		ZCG/S	
Metric	.75 BSPP	.25 BSPP	ZCF/M		ZCF/T	

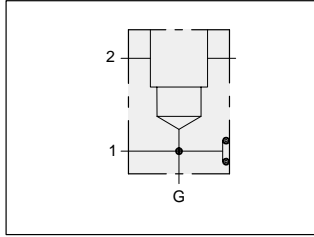
Series 2 T-3A



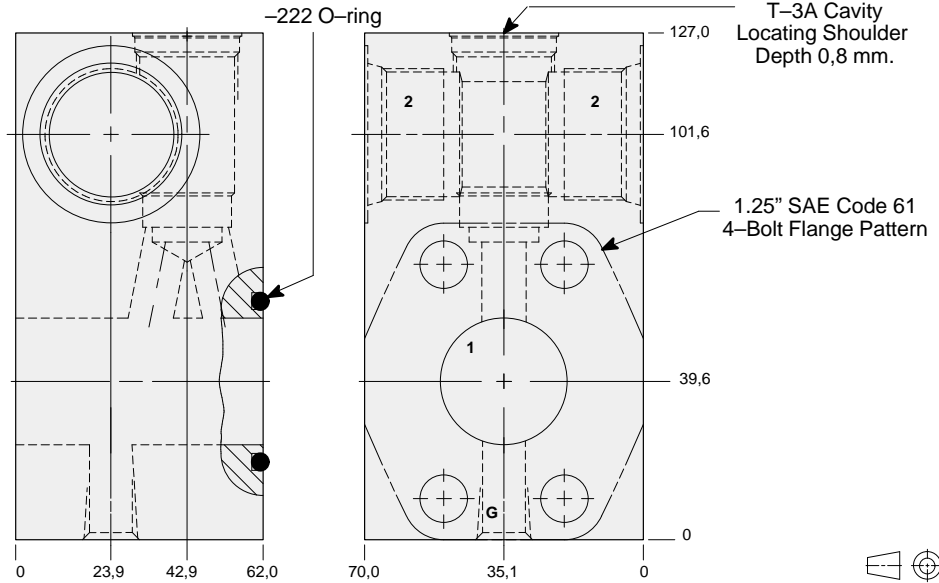
# LINE MOUNT BODIES



- Aluminium rated to 210 bar and SG Iron rated to 350 bar.



## Sandwich mount through port 1.25" SAE Code 61 body with gauge port.



### TYPICAL CARTRIDGES USED WITH THIS BODY

RPGC - ***	Page	1.06
RPGE - ***	Page	1.08
RDFA - ***	Page	1.10
RQGB - ***	Page	1.12
RPGD - ***	Page	1.14
NQEB - ***	Page	10.16

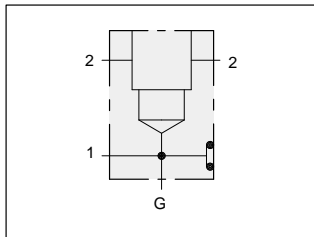
Cartridge seal type determines O-ring type.

Instructions for ordering complete cartridge and body assemblies. Page viii

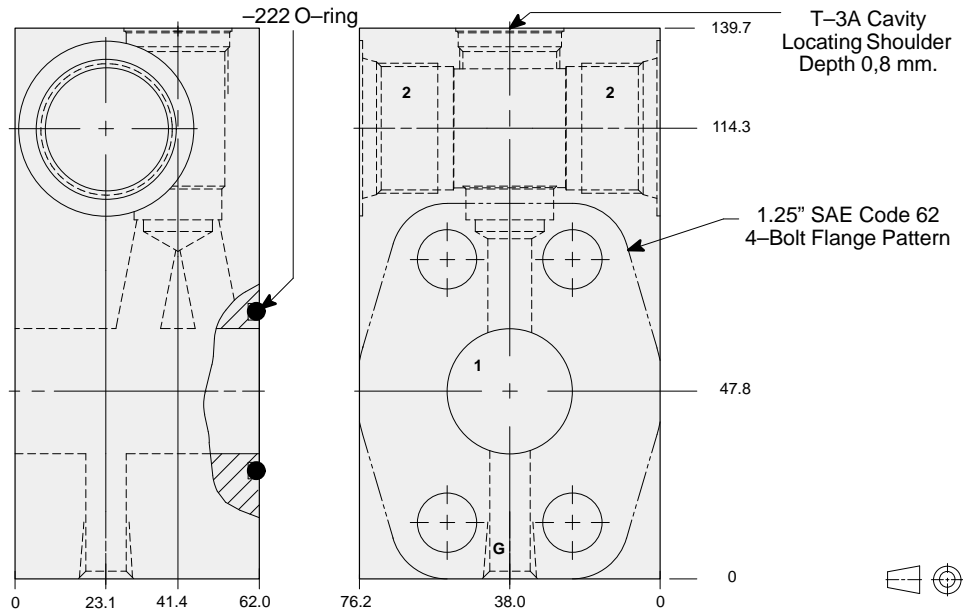
Pressure ratings, material specifications. Page 11.02

SAE Specifications. Page 11.03

Mounting Hole Dimensions	Port 2	Gauge Port	ALUMINIUM		SG IRON	
			Model Code	List Price	Model Code	List Price
Inch	1.00 NPTF	.25 NPTF	ZQH		ZQH/S	
Inch	SAE-16	.25 NPTF	ZQG		ZQG/S	
Metric	1.00 BSPP	.25 BSPP	ZQF/M		ZQF/T	



## Sandwich mount through port 1.25" SAE Code 62 body with gauge port.



### TYPICAL CARTRIDGES USED WITH THIS BODY

RPGC - ***	Page	1.06
RPGE - ***	Page	1.08
RDFA - ***	Page	1.10
RQGB - ***	Page	1.12
RPGD - ***	Page	1.14
NQEB - ***	Page	10.16

Cartridge seal type determines O-ring type.

Instructions for ordering complete cartridge and body assemblies. Page viii

Pressure ratings, material specifications. Page 11.02

SAE Specifications. Page 11.03

Mounting Hole Dimensions	Port 2	Gauge Port	ALUMINIUM		SG IRON	
			Model Code	List Price	Model Code	List Price
Inch	1.00 NPTF	.25 NPTF	ZBX		ZBX/S	
Inch	SAE-16	.25 NPTF	ZBW		ZBW/S	
Metric	1.00 BSPP	.25 BSPP	ZBV/M		ZBV/T	

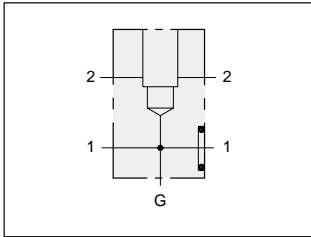




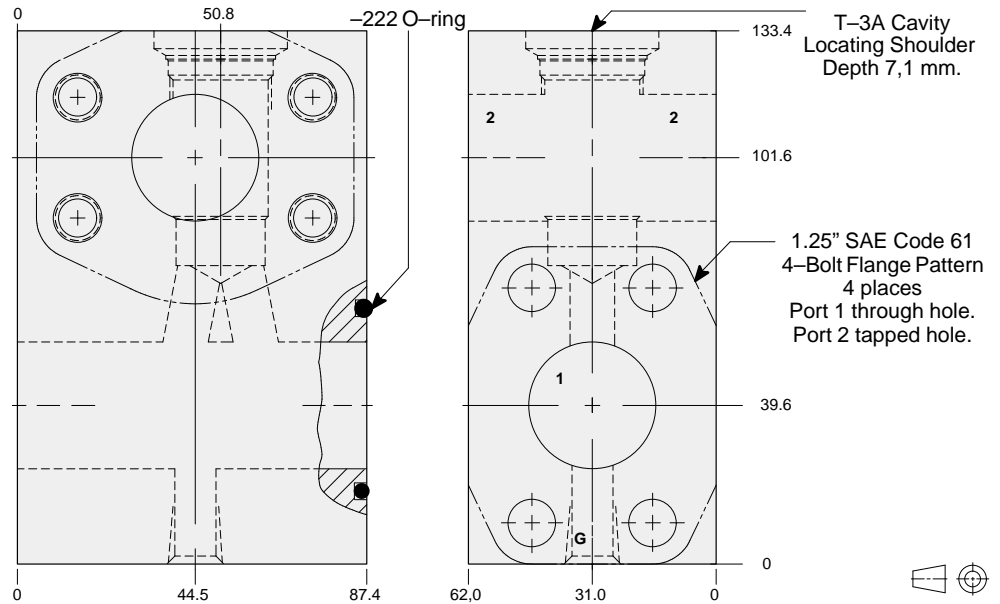
# LINE MOUNT BODIES



- Aluminium rated to 210 bar and SG Iron rated to 350 bar.



## Sandwich mount through port 1.25" SAE Code 61 flange port body with gauge port.



### TYPICAL CARTRIDGES USED WITH THIS BODY

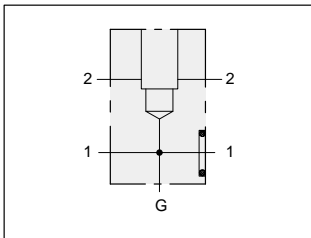
RPGC - ***	Page	1.06
RPGE - ***	Page	1.08
RDFA - ***	Page	1.10
RQGB - ***	Page	1.12
RPGD - ***	Page	1.14
NQEB - ***	Page	10.16

Cartridge seal type determines O-ring type.

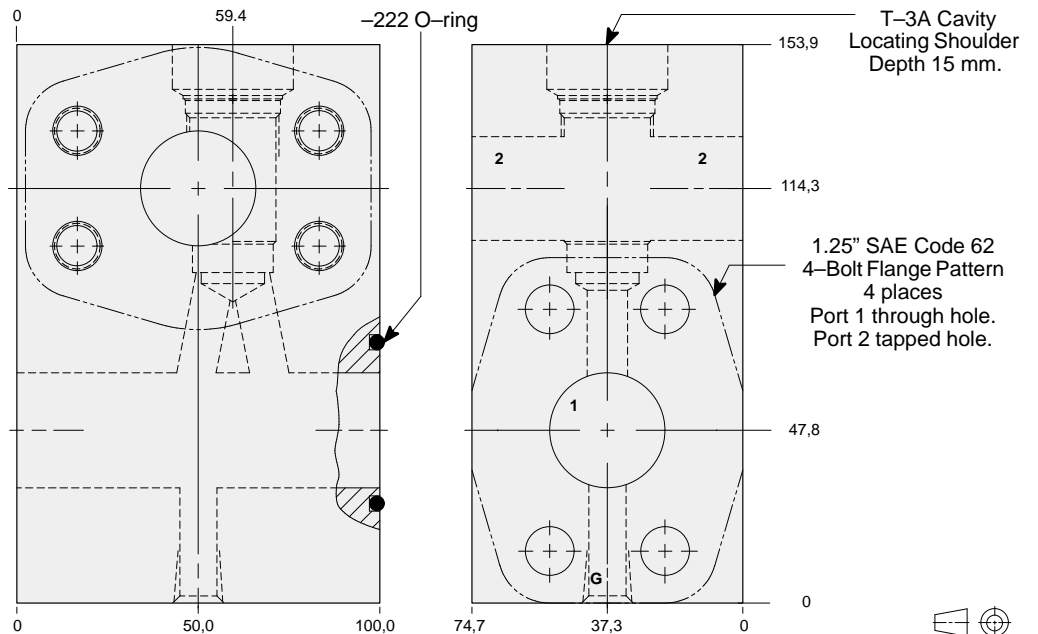
Instructions for ordering complete cartridge and body assemblies. Page viii

Pressure ratings, material specifications. Page 11.02  
SAE Specifications. Page 11.03

Mounting Hole Dimensions	Gauge Port	ALUMINIUM		SG IRON	
		Model Code	List Price	Model Code	List Price
Inch	.25 NPTF	ZQE		ZQE/S	
Metric	.25 BSPP	ZQE/M		ZQE/T	



## Sandwich mount through port 1.25" SAE Code 62 flange port body with gauge port.



### TYPICAL CARTRIDGES USED WITH THIS BODY

RPGC - ***	Page	1.06
RPGE - ***	Page	1.08
RDFA - ***	Page	1.10
RQGB - ***	Page	1.12
RPGD - ***	Page	1.14
NQEB - ***	Page	10.16

Cartridge seal type determines O-ring type.

Instructions for ordering complete cartridge and body assemblies. Page viii

Pressure ratings, material specifications. Page 11.02  
SAE Specifications. Page 11.03

Mounting Hole Dimensions	Gauge Port	ALUMINIUM		SG IRON	
		Model Code	List Price	Model Code	List Price
Inch	.25 NPTF	ZDB		ZDB/S	
Metric	.25 BSPP	ZDB/M		ZDB/T	

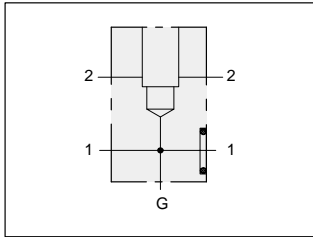
Series 2 T-3A



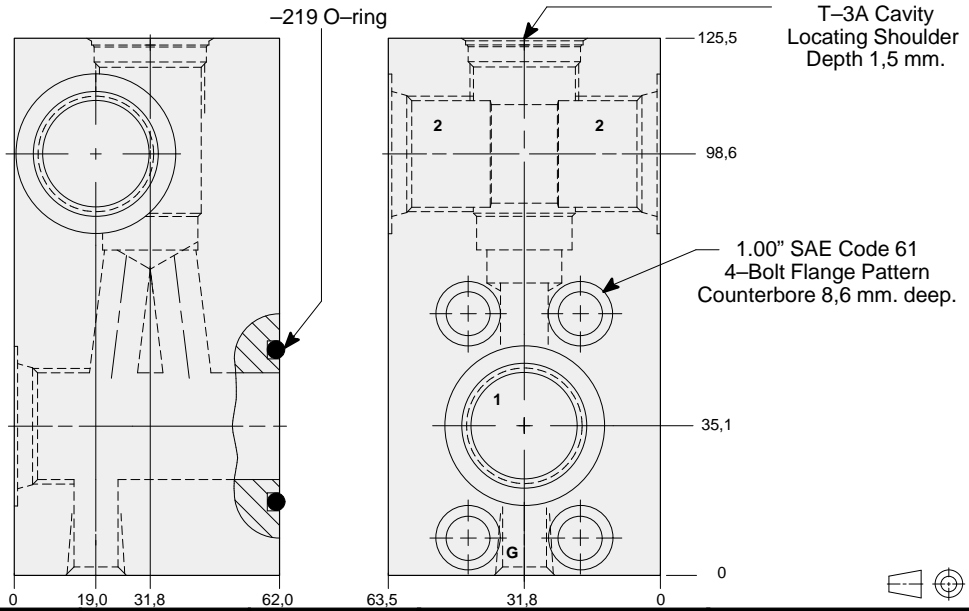
# LINE MOUNT BODIES



- Aluminium rated to 210 bar and SG Iron rated to 350 bar.

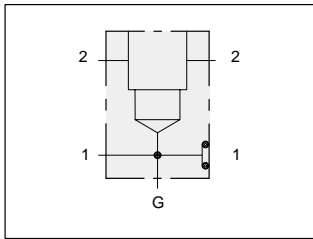


## Flange mount through port 1.00" SAE Code 61 body with threaded outlet and gauge port.

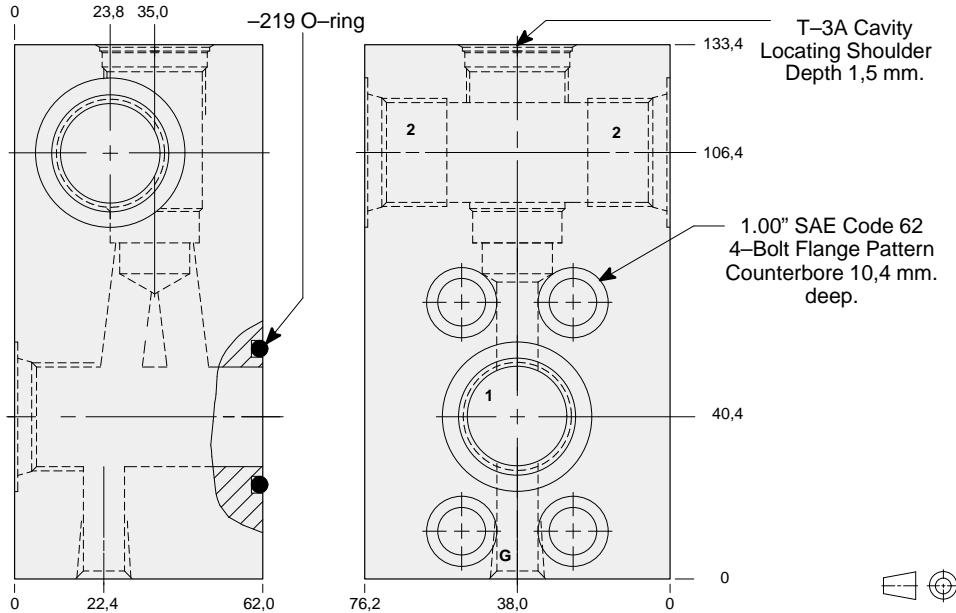


- TYPICAL CARTRIDGES USED WITH THIS BODY**
- RPGC - \*\*\* Page 1.06
  - RPGE - \*\*\* Page 1.08
  - RDFA - \*\*\* Page 1.10
  - RQGB - \*\*\* Page 1.12
  - RPGD - \*\*\* Page 1.14
  - NQEB - \*\*\* Page 10.16
- Cartridge seal type determines O-ring seal.
- Instructions for ordering complete cartridge and body assemblies. Page viii
- Pressure ratings, material specifications. Page 11.02
- SAE Specifications. Page 11.03

Mounting Hole Dimensions	Ports 1 & 2	Gauge Port	ALUMINIUM		SG IRON	
			Model Code	List Price	Model Code	List Price
Inch	.75 NPTF	.25 NPTF	ZCL		ZCL/S	
Inch	SAE-12	.25 NPTF	ZCK		ZCK/S	
Metric	.75 BSPP	.25 BSPP	ZCJ/M		ZCJ/T	



## Flange mount through port 1.00" SAE Code 62 body with threaded outlet and gauge port.



- TYPICAL CARTRIDGES USED WITH THIS BODY**
- RPGC - \*\*\* Page 1.06
  - RPGE - \*\*\* Page 1.08
  - RDFA - \*\*\* Page 1.10
  - RQGB - \*\*\* Page 1.12
  - RPGD - \*\*\* Page 1.14
  - NQEB - \*\*\* Page 10.16
- Cartridge seal type determines O-ring seal.
- Instructions for ordering complete cartridge and body assemblies. Page viii
- Pressure ratings, material specifications. Page 11.02
- SAE Specifications. Page 11.03

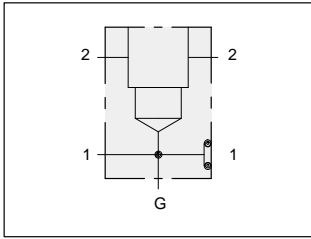
Mounting Hole Dimensions	Ports 1 & 2	Gauge Port	ALUMINIUM		SG IRON	
			Model Code	List Price	Model Code	List Price
Inch	.75 NPTF	.25 NPTF	ZCD		ZCD/S	
Inch	SAE-12	.25 NPTF	ZCC		ZCC/S	
Metric	.75 BSPP	.25 BSPP	ZCB/M		ZCB/T	



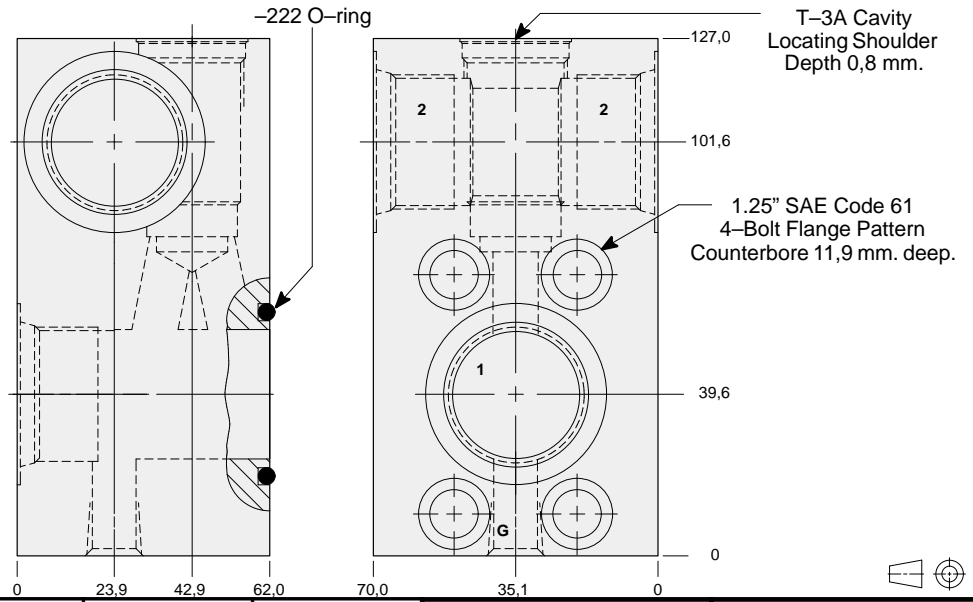
# LINE MOUNT BODIES



- Aluminium rated to 210 bar and SG Iron rated to 350 bar.



## Flange mount through port 1.25" SAE Code 61 body with threaded outlet and gauge port.



### TYPICAL CARTRIDGES USED WITH THIS BODY

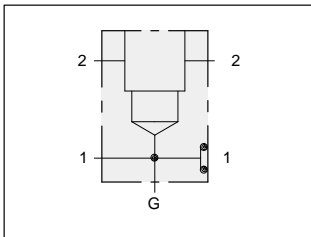
RPGC - ***	Page	1.06
RPGE - ***	Page	1.08
RDFA - ***	Page	1.10
RQGB - ***	Page	1.12
RPGD - ***	Page	1.14
NQEB - ***	Page	10.16

Cartridge seal type determines O-ring type.

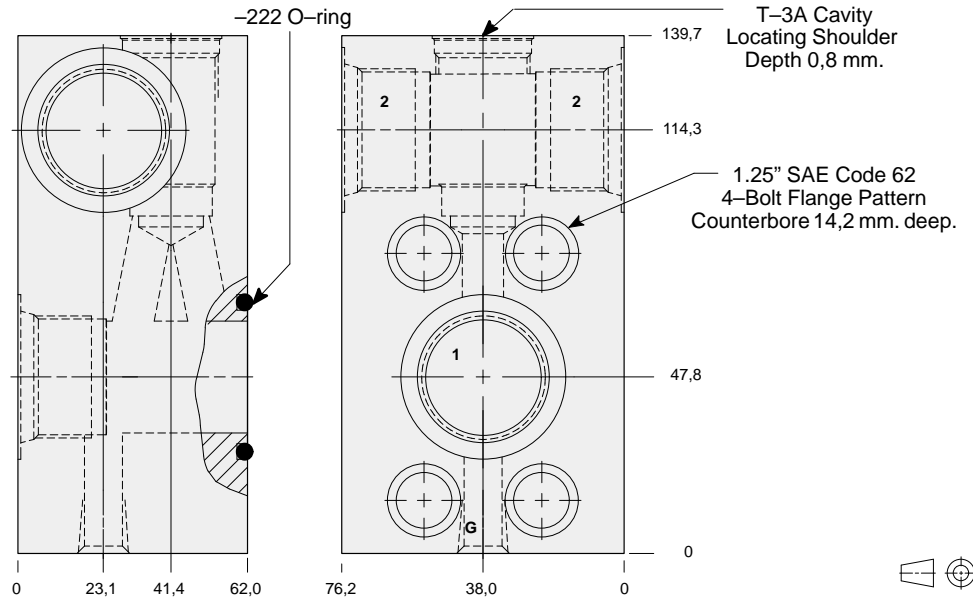
Instructions for ordering complete cartridge and body assemblies. Page viii

Pressure ratings, material specifications. Page 11.02  
SAE Specifications. Page 11.03

Mounting Hole Dimensions	Ports 1 & 2	Gauge Port	ALUMINIUM		SG IRON	
			Model Code	List Price	Model Code	List Price
Inch	1.00 NPTF	.25 NPTF	ZBZ		ZBZ/S	
Inch	SAE-16	.25 NPTF	ZKE		ZKE/S	
Metric	1.00 BSPP	.25 BSPP	ZBY/M		ZBY/T	



## Flange mount through port 1.25" SAE Code 62 body with threaded outlet and gauge port.



### TYPICAL CARTRIDGES USED WITH THIS BODY

RPGC - ***	Page	1.06
RPGE - ***	Page	1.08
RDFA - ***	Page	1.10
RQGB - ***	Page	1.12
RPGD - ***	Page	1.14
NQEB - ***	Page	10.16

Cartridge seal type determines O-ring type.

Instructions for ordering complete cartridge and body assemblies. Page viii

Pressure ratings, material specifications. Page 11.02  
SAE Specifications. Page 11.03

Mounting Hole Dimensions	Ports 1 & 2	Gauge Port	ALUMINIUM		SG IRON	
			Model Code	List Price	Model Code	List Price
Inch	1.00 NPTF	.25 NPTF	ZBT		ZBT/S	
Inch	SAE-16	.25 NPTF	ZBS		ZBS/S	
Metric	1.00 BSPP	.25 BSPP	ZBR/M		ZBR/T	

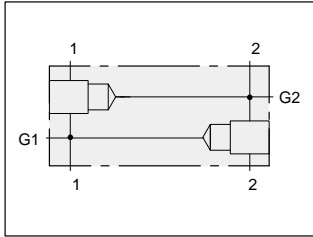
Series 2 T-3A



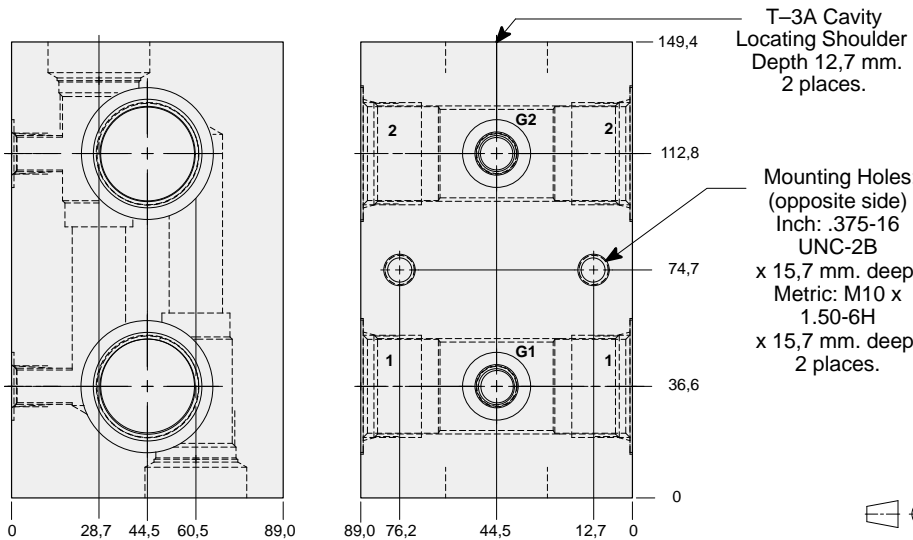
# LINE MOUNT BODIES



- Aluminium rated to 210 bar and SG Iron rated to 350 bar.



## Two cavity body with gauge ports for cross-port relief applications.



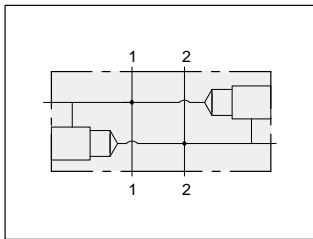
### TYPICAL CARTRIDGES USED WITH THIS BODY

RPGC - ***	Page	1.06
RPGE - ***	Page	1.08
RDFA - ***	Page	1.10
RQGB - ***	Page	1.12

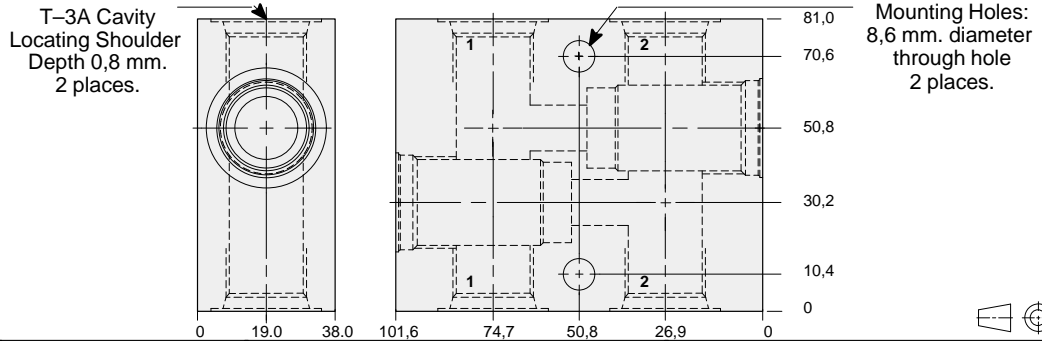
Instructions for ordering complete cartridge and body assemblies. Page viii

Pressure ratings, material specifications. Page 11.02

Mounting Hole Dimensions	Ports 1 & 2	Gauge Port	ALUMINIUM		SG IRON	
			Model Code	List Price	Model Code	List Price
Inch	.75 NPTF	.25 NPTF	YCD		YCD/S	
Inch	1.00 NPTF	.25 NPTF	YCE		YCE/S	
Inch	SAE-12	.25 NPTF	YCL		YCL/S	
Inch	SAE-16	.25 NPTF	YCM		YCM/S	
Metric	.75 BSPP	.25 BSPP	YCW		YCW/S	
Metric	1.00 BSPP	.25 BSPP	YCX		YCX/S	



## Two cavity body for cross-port relief applications.



### TYPICAL CARTRIDGES USED WITH THIS BODY

RPGC - ***	Page	1.06
RPGE - ***	Page	1.08
RDFA - ***	Page	1.10
RQGB - ***	Page	1.12

Instructions for ordering complete cartridge and body assemblies. Page viii

Pressure ratings, material specifications. Page 11.02

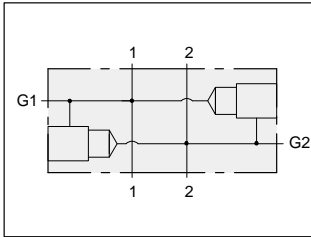
Ports 1 & 2	ALUMINIUM		SG IRON	
	Model Code	List Price	Model Code	List Price
.25 NPTF	YBA		YBA/S	
.375 NPTF	YBB		YBB/S	
.50 NPTF	YBC		YBC/S	
.75 NPTF	YBD		YBD/S	
SAE-6	YBI		YBI/S	
SAE-8	YBJ		YBJ/S	
SAE-10	YBK		YBK/S	
.75 BSPP	YBO		YBO/S	
.25 BSPP	YBT		YBT/S	
.375 BSPP	YBU		YBU/S	
.50 BSPP	YBV		YBV/S	



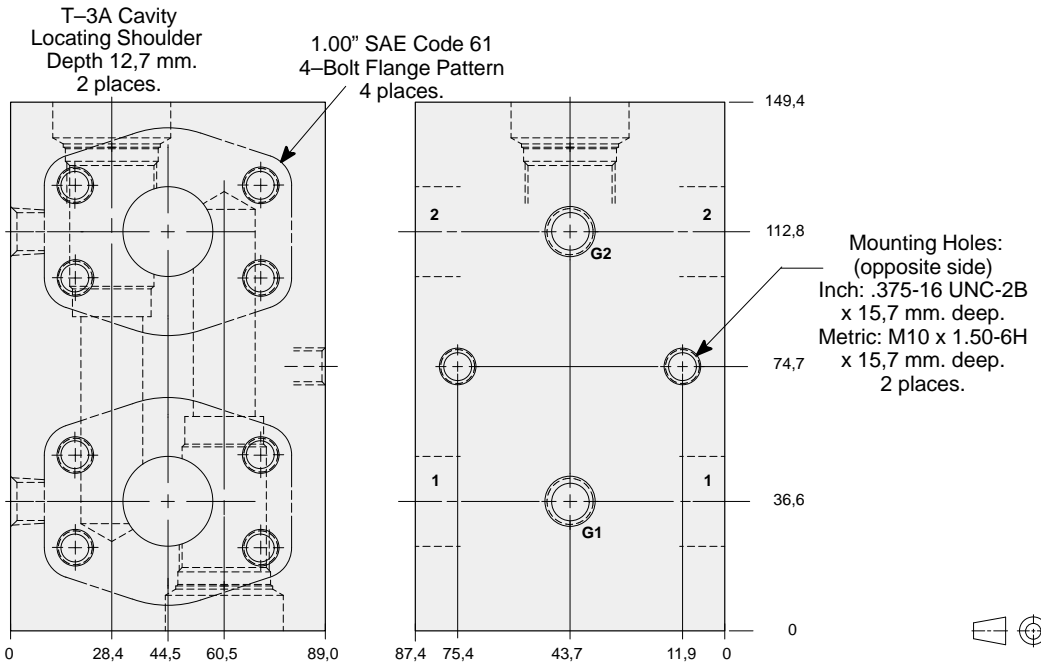
# LINE MOUNT BODIES



- Aluminium rated to 210 bar and SG Iron rated to 350 bar.



## Two cavity 1.00" SAE Code 61 flange port body with gauge ports for cross-port relief applications.

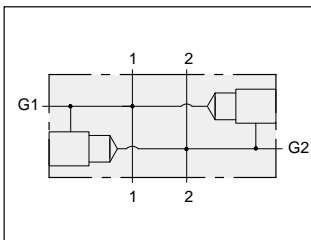


### TYPICAL CARTRIDGES USED WITH THIS BODY

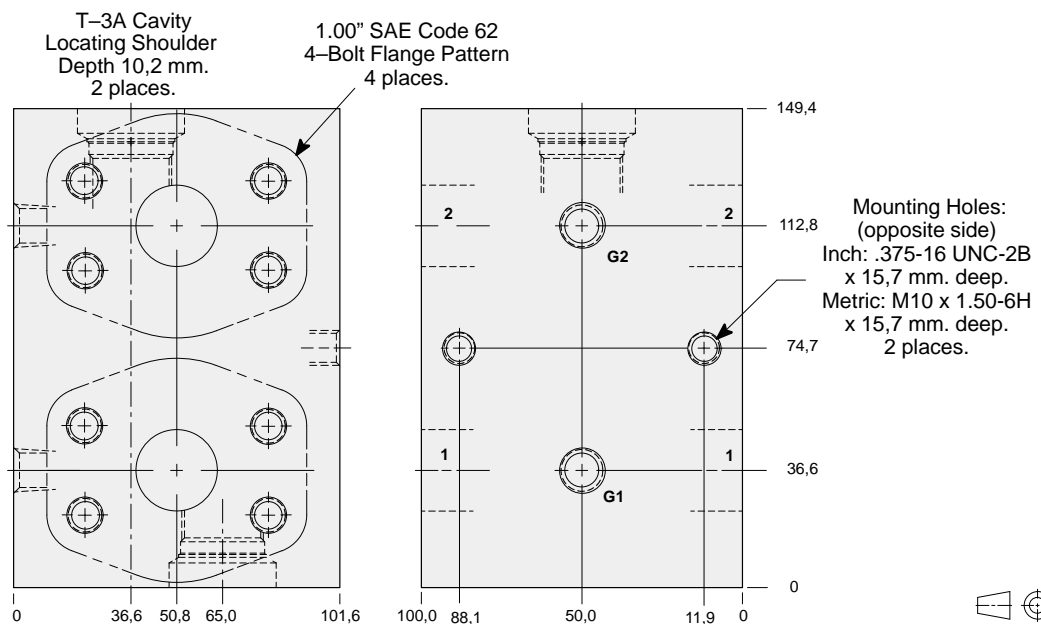
- RPGC - \*\*\* Page 1.06
- RPGE - \*\*\* Page 1.08
- RDFA - \*\*\* Page 1.10
- RQGB - \*\*\* Page 1.12

- Instructions for ordering complete cartridge and body assemblies. Page viii
- Pressure ratings, material specifications. Page 11.02
- SAE Specifications. Page 11.03

Mounting Hole Dimensions	Gauge Port	ALUMINIUM		SG IRON	
		Model Code	List Price	Model Code	List Price
Inch	.25 NPTF	YCP		YCP/S	
Metric	.25 BSPP	YCP/M		YCP/T	



## Two cavity 1.00" SAE Code 62 flange port body with gauge ports for cross-port relief applications.



### TYPICAL CARTRIDGES USED WITH THIS BODY

- RPGC - \*\*\* Page 1.06
- RPGE - \*\*\* Page 1.08
- RDFA - \*\*\* Page 1.10
- RQGB - \*\*\* Page 1.12

- Instructions for ordering complete cartridge and body assemblies. Page viii
- Pressure ratings, material specifications. Page 11.02
- SAE Specifications. Page 11.03

Mounting Hole Dimensions	Gauge Port	ALUMINIUM		SG IRON	
		Model Code	List Price	Model Code	List Price
Inch	.25 NPTF	YC4		YC4/S	
Metric	.25 BSPP	YC4/M		YC4/T	

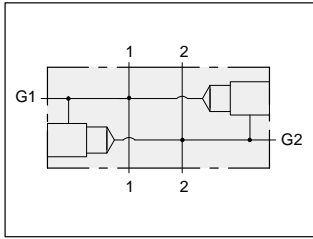
Series 2 T-3A



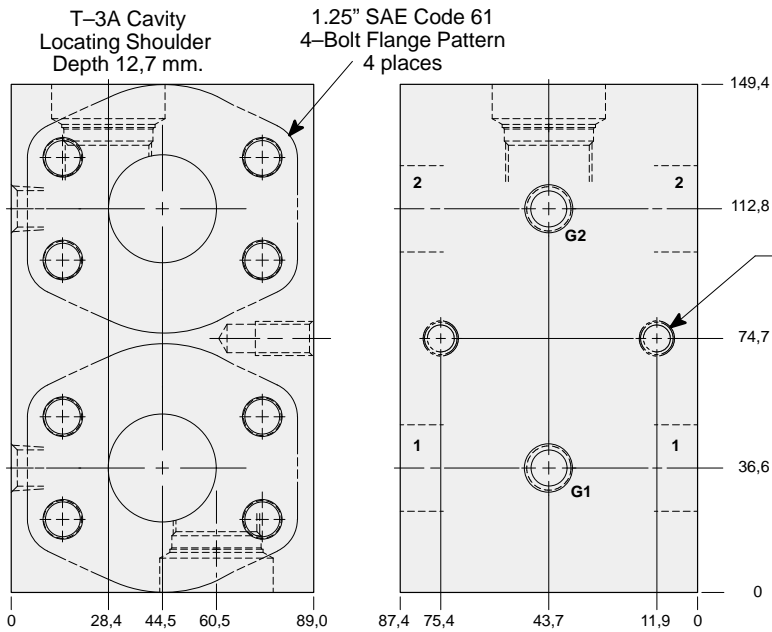
# LINE MOUNT BODIES



- Aluminium rated to 210 bar and SG Iron rated to 350 bar.



## Two cavity 1.25" SAE Code 61 flange port body with gauge ports for cross-port relief applications.



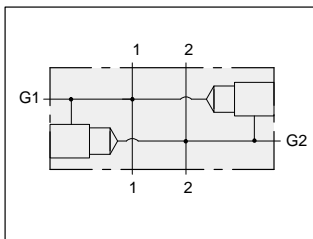
Mounting Holes:  
(opposite side)  
Inch: .375-16 UNC-2B  
x 15,7 mm. deep.  
Metric: M10 x 1.50-6H  
x 15,7 mm. deep.  
2 places.

### TYPICAL CARTRIDGES USED WITH THIS BODY

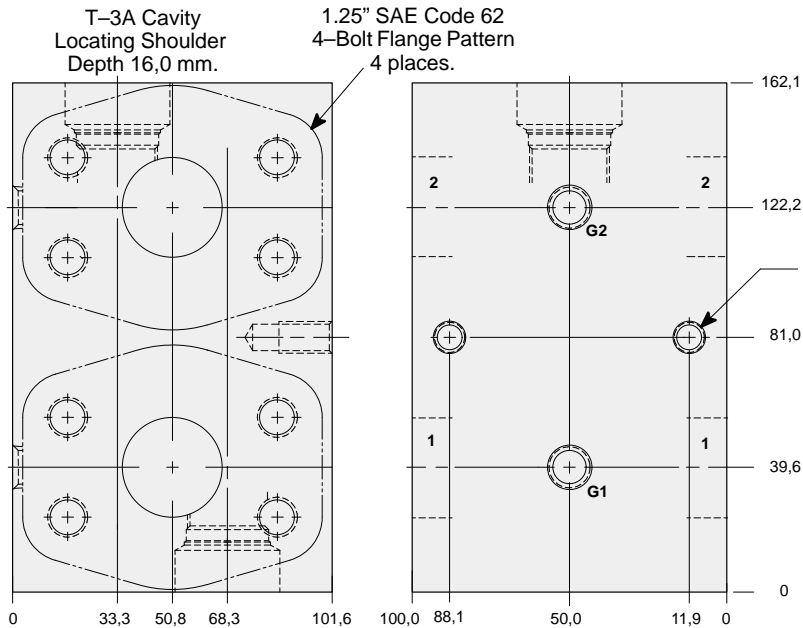
- RPGC - \*\*\* Page 1.06
- RPGE - \*\*\* Page 1.08
- RDFA - \*\*\* Page 1.10
- RQGB - \*\*\* Page 1.12

- Instructions for ordering complete cartridge and body assemblies. Page viii
- Pressure ratings, material specifications. Page 11.02
- SAE Specifications. Page 11.03

Mounting Hole Dimensions	Gauge Port	ALUMINIUM		SG IRON	
		Model Code	List Price	Model Code	List Price
Inch	.25 NPTF	YCQ		YCQ/S	
Metric	.25 BSPP	YCQ/M		YCQ/T	



## Two cavity 1.25" SAE Code 62 flange port body with gauge ports for cross-port relief applications.



Mounting Holes:  
(opposite side)  
Inch: .375-16 UNC-2B  
x 15,7 mm. deep.  
Metric: M10 x 1.50-6H  
x 15,7 mm. deep.  
2 places.

### TYPICAL CARTRIDGES USED WITH THIS BODY

- RPGC - \*\*\* Page 1.06
- RPGE - \*\*\* Page 1.08
- RDFA - \*\*\* Page 1.10
- RQGB - \*\*\* Page 1.12

- Instructions for ordering complete cartridge and body assemblies. Page viii
- Pressure ratings, material specifications. Page 11.02
- SAE Specifications. Page 11.03

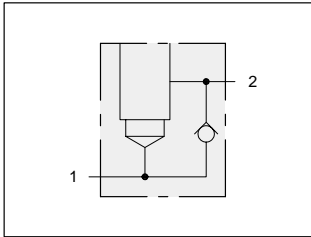
Mounting Hole Dimensions	Gauge Port	ALUMINIUM		SG IRON	
		Model Code	List Price	Model Code	List Price
Inch	.25 NPTF	YC5		YC5/S	
Metric	.25 BSPP	YC5/M		YC5/T	



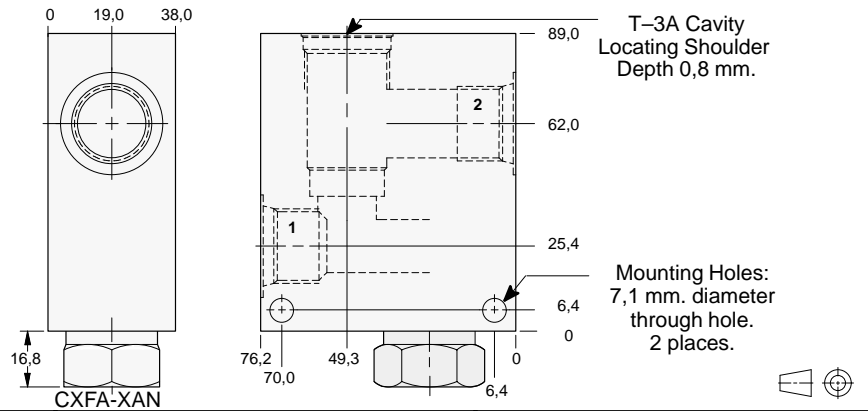
# LINE MOUNT BODIES



- Aluminium rated to 210 bar and SG Iron rated to 350 bar.



## Body with reverse free flow check.



### TYPICAL CARTRIDGES USED WITH THIS BODY

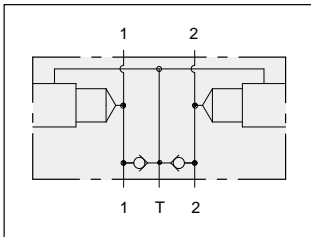
RPGC - ***	Page	1.06
RPGE - ***	Page	1.08
RDFA - ***	Page	1.10
RQGB - ***	Page	1.12
RPGD - ***	Page	1.14

Cartridge seal type determines check valve seal type.

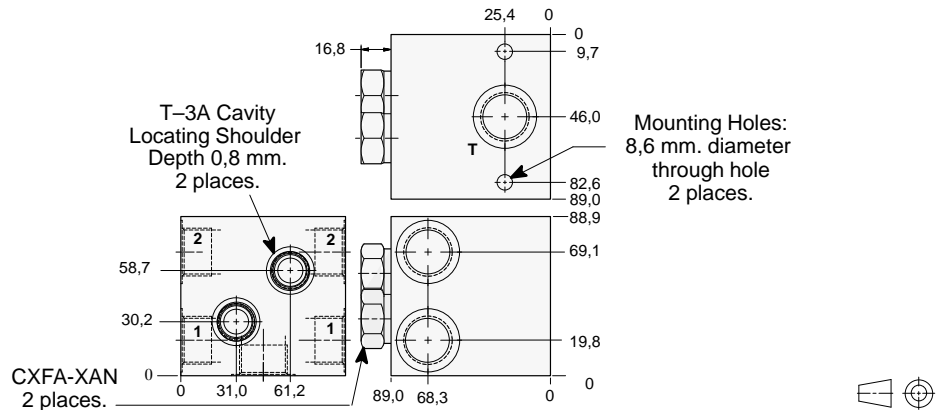
Instructions for ordering complete cartridge and body assemblies. Page viii

Pressure ratings, material specifications. Page 11.02

Ports 1 & 2	ALUMINIUM		SG IRON	
	Model Code	List Price	Model Code	List Price
.375 NPTF	CNB		CNB/S	
.50 NPTF	CNC		CNC/S	
.75 NPTF	CND		CND/S	
SAE-6	CNI		CNI/S	
SAE-8	CNJ		CNJ/S	
SAE-10	CNK		CNK/S	
.375 BSPP	CNU		CNU/S	
.50 BSPP	CNV		CNV/S	
.75 BSPP	CNW		CNW/S	



## Two cavity body with make-up checks for cross-port relief applications.



### TYPICAL CARTRIDGES USED WITH THIS BODY

RPGC - ***	Page	1.06
RPGE - ***	Page	1.08
RDFA - ***	Page	1.10
RQGB - ***	Page	1.12

Cartridge seal type determines check valve seal type.

Instructions for ordering complete cartridge and body assemblies. Page viii

Pressure ratings, material specifications. Page 11.02

Ports 1, 2 & T	ALUMINIUM		SG IRON	
	Model Code	List Price	Model Code	List Price
.375 NPTF	CMB		CMB/S	
.50 NPTF	CMC		CMC/S	
.75 NPTF	CMD		CMD/S	
SAE-8	CMJ		CMJ/S	
SAE-10	CMK		CMK/S	
SAE-12	CML		CML/S	
.375 BSPP	CMU		CMU/S	
.50 BSPP	CMV		CMV/S	
.75 BSPP	CMW		CMW/S	

Series 2 T-3A