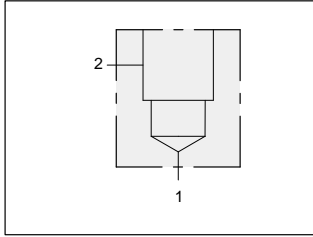




LINE MOUNT BODIES

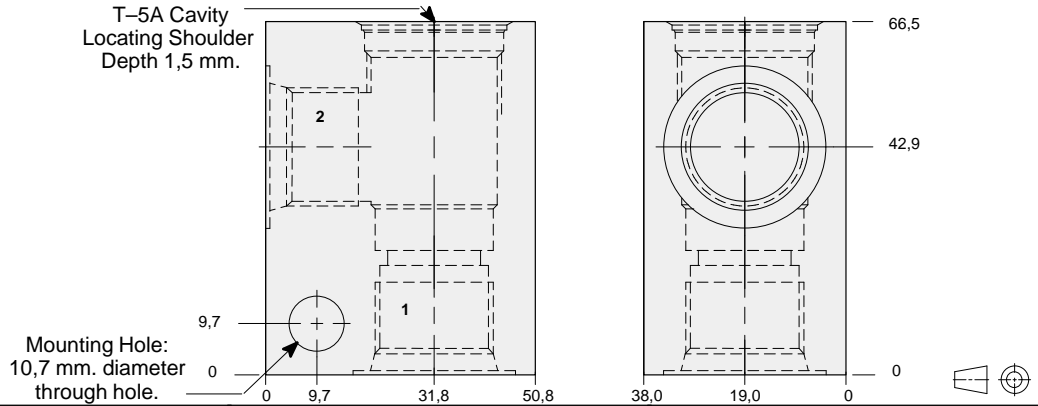


- Aluminium rated to 210 bar and SG Iron rated to 350 bar.



90 degree body.

T-5A Cavity
Locating Shoulder
Depth 1,5 mm.

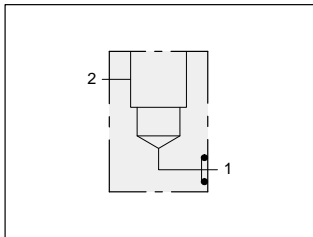


TYPICAL CARTRIDGES USED WITH THIS BODY

CXFA - ***	Page	5.08
CXED - ***	Page	5.10
NFDC - ***	Page	5.12
CNEC - ***	Page	5.14
NCEB - ***	Page	5.16
NCEC - ***	Page	5.18
FXDA - ***	Page	5.20
FCDB - ***	Page	5.22
FDCB - ***	Page	5.24
FQEA - ***	Page	10.14

Instructions for ordering complete cartridge and body assemblies. Page viii
Pressure ratings, material specifications. Page 11.02

Ports 1 & 2	ALUMINIUM		SG IRON	
	Model Code	List Price	Model Code	List Price
.25 NPTF	DAA		DAA/S	
.375 NPTF	DAB		DAB/S	
.50 NPTF	DAC		DAC/S	
SAE-6	DAI		DAI/S	
SAE-8	DAJ		DAJ/S	
SAE-10	DAK		DAK/S	
.25 BSPP	DAT		DAT/S	
.375 BSPP	DAU		DAU/S	
.50 BSPP	DAV		DAV/S	

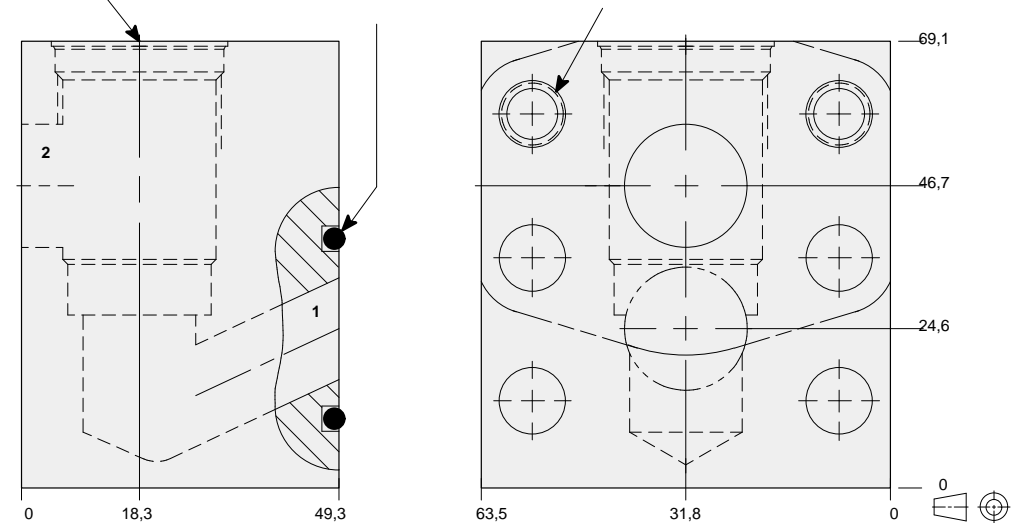


Direct mount .75" SAE Code 61 body

T-5A Cavity
Locating Shoulder
Depth 0,8 mm.

-214 O-ring

.75" SAE Code 61
4-Bolt Flange Pattern
2 holes tapped
4 holes through.



TYPICAL CARTRIDGES USED WITH THIS BODY

CXFA - ***	Page	5.08
CXED - ***	Page	5.10
NFDC - ***	Page	5.12
CNEC - ***	Page	5.14
NCEB - ***	Page	5.16
NCEC - ***	Page	5.18
FXDA - ***	Page	5.20
FCDB - ***	Page	5.22
FDCB - ***	Page	5.24
FQEA - ***	Page	10.14

Instructions for ordering complete cartridge and body assemblies. Page viii
Pressure ratings, material specifications. Page 11.02

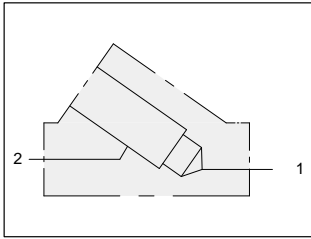
Mounting Hole Dimensions	ALUMINIUM		SG IRON	
	Model Code	List Price	Model Code	List Price
Inch	ZKS		ZKS/S	
Metric	ZKS/M		ZKS/T	



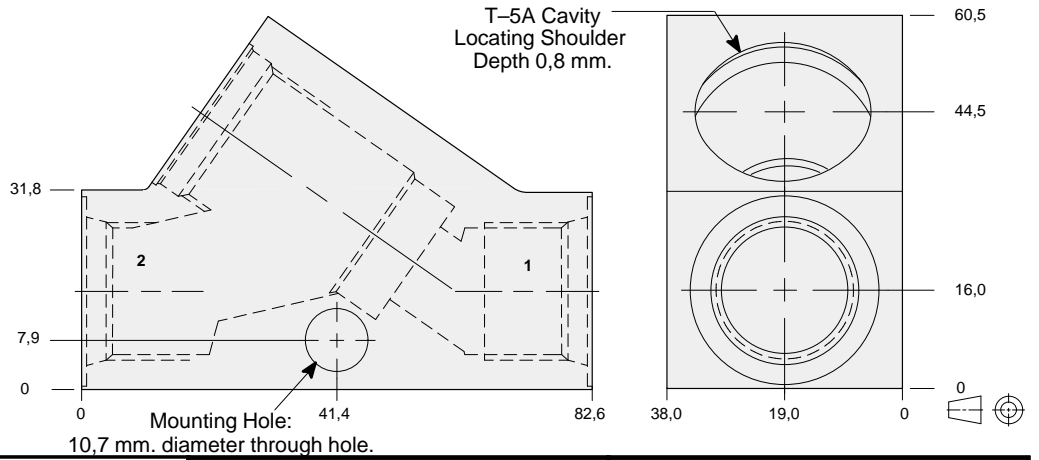
LINE MOUNT BODIES



- Aluminium rated to 210 bar and SG Iron rated to 350 bar.



Inline body.

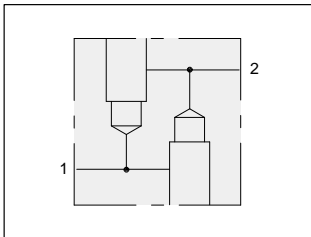


TYPICAL CARTRIDGES USED WITH THIS BODY

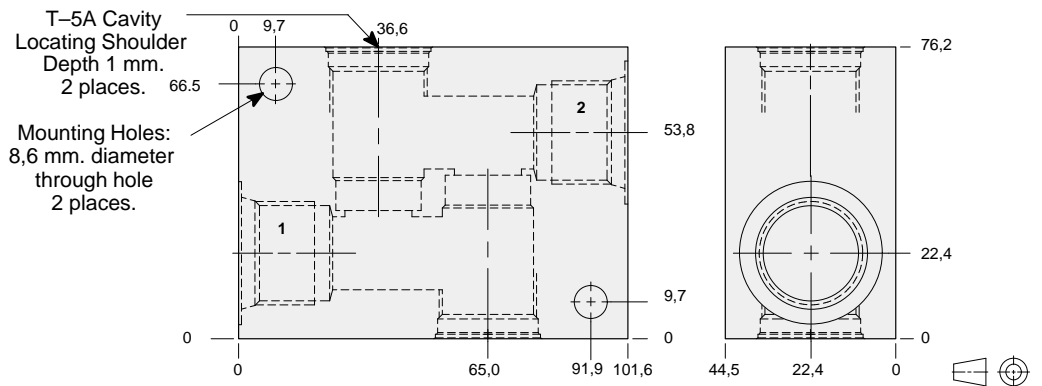
CXFA - ***	Page	5.08
CXED - ***	Page	5.10
NFDC - ***	Page	5.12
CNEC - ***	Page	5.14
NCEB - ***	Page	5.16
NCEC - ***	Page	5.18
FXDA - ***	Page	5.20
FCDB - ***	Page	5.22
FDCB - ***	Page	5.24
FQEA - ***	Page	10.14

Instructions for ordering complete cartridge and body assemblies. Page viii
 Pressure ratings, material specifications. Page 11.02

Ports 1 & 2	ALUMINIUM		SG IRON	
	Model Code	List Price	Model Code	List Price
.375 NPTF	DCB		DCB/S	
.50 NPTF	DCC		DCC/S	
SAE-6	DCI		DCI/S	
SAE-8	DCJ		DCJ/S	
SAE-10	DCK		DCK/S	
.375 BSPP	DCU		DCU/S	
.50 BSPP	DCV		DCV/S	



Two cavity body.



TYPICAL CARTRIDGES USED WITH THIS BODY

CXFA - ***	Page	5.08
NFDC - ***	Page	5.12
FXDA - ***	Page	5.20

Instructions for ordering complete cartridge and body assemblies. Page viii
 Pressure ratings, material specifications. Page 11.02

Ports 1 & 2	ALUMINIUM		SG IRON	
	Model Code	List Price	Model Code	List Price
.375 NPTF	XWA		XWA/S	
.50 NPTF	XWB		XWB/S	
.75 NPTF	XWC		XWC/S	
SAE-8	XWD		XWD/S	
SAE-10	XWF		XWF/S	
SAE-12	XWG		XWG/S	
.375 BSPP	XWH		XWH/S	
.50 BSPP	XWJ		XWJ/S	
.75 BSPP	XWK		XWK/S	

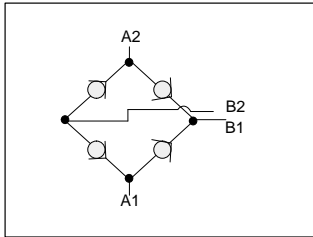
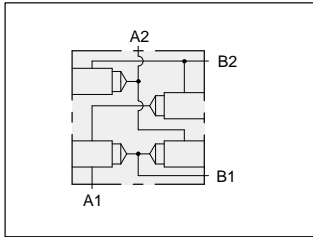
Series 2 T-5A



LINE MOUNT BODIES



- Aluminium rated to 210 bar and SG Iron rated to 350 bar.



TYPICAL CARTRIDGES USED WITH THIS BODY

CXFA - *** Page 5.08

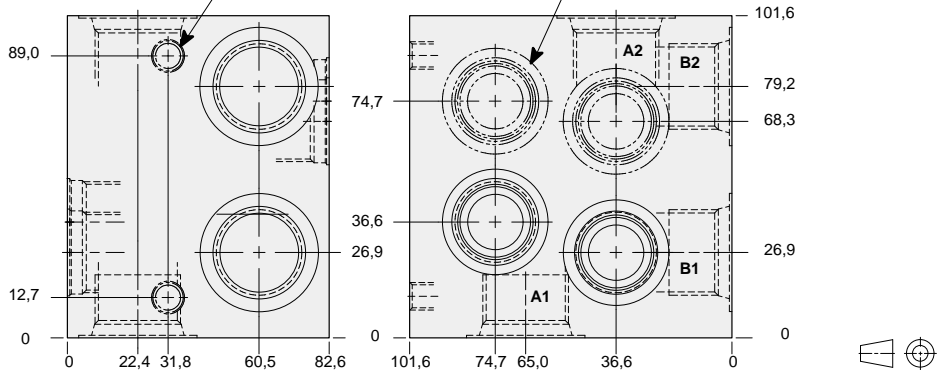
Instructions for ordering complete cartridge and body assemblies. Page viii

Pressure ratings, material specifications. Page 11.02

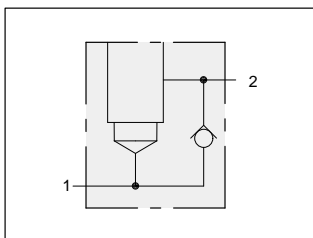
Rectifier body.

Mounting Holes:
(opposite side)
Inch: .375-16 UNC-2B
x 15,7 mm. deep.
Metric: M10 x 1.50-6H
x 15,7 mm. deep.

T-5A Cavity
Locating Shoulder
Depth 0,8 mm.
4 places.



Mounting Hole Dimensions	All Ports	ALUMINIUM		SG IRON	
		Model Code	List Price	Model Code	List Price
Inch	.50 NPTF	YSL		YSL/S	
Inch	.75 NPTF	YSM		YSM/S	
Inch	SAE-10	YSN		YSN/S	
Inch	SAE-12	YSO		YSO/S	
Metric	.50 BSPP	YSP		YSP/S	
Metric	.75 BSPP	YSQ		YSQ/S	



TYPICAL CARTRIDGES USED WITH THIS BODY

NFDC - *** Page 5.12

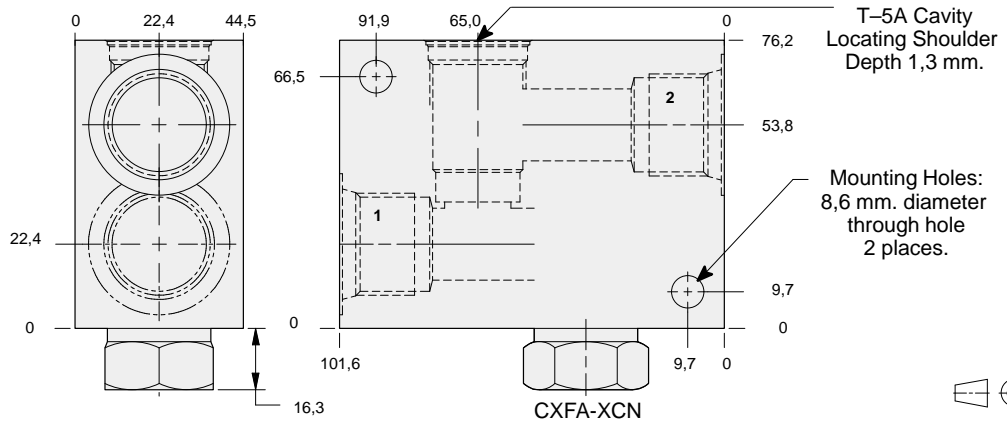
FXDA - *** Page 5.20

Cartridge seal type determines check valve seal type.

Instructions for ordering complete cartridge and body assemblies. Page viii

Pressure ratings, material specifications. Page 11.02

Body with reverse free flow check.



Ports 1 & 2	ALUMINIUM		SG IRON	
	Model Code	List Price	Model Code	List Price
.375 NPTF	DNB		DNB/S	
.50 NPTF	DNC		DNC/S	
.75 NPTF	DND		DND/S	
SAE-8	DNJ		DNJ/S	
SAE-10	DNK		DNK/S	
SAE-12	DNL		DNL/S	
.375 BSPP	DNU		DNU/S	
.50 BSPP	DNV		DNV/S	
.75 BSPP	DNW		DNW/S	