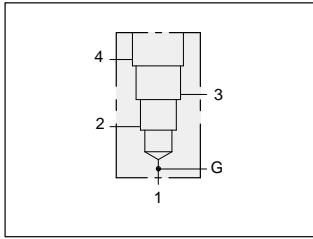




LINE MOUNT BODIES

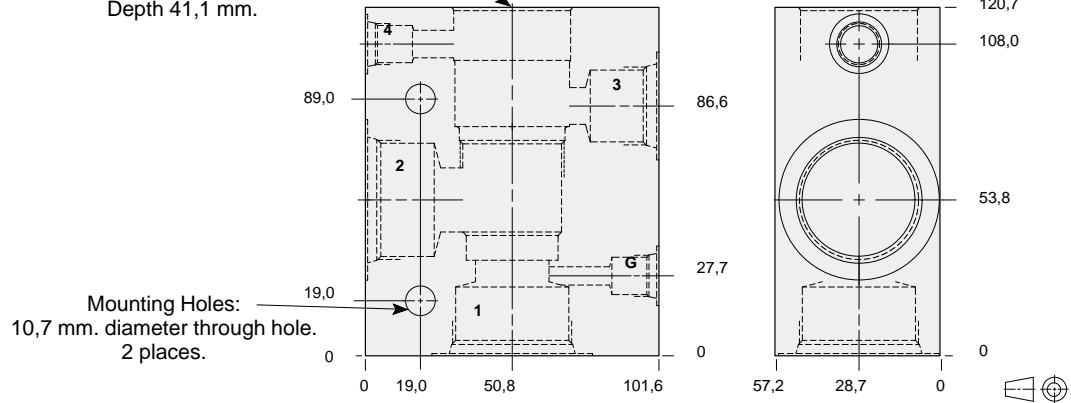


- Aluminium rated to 210 bar and SG Iron rated to 350 bar.



90 degree body with gauge port.

T-23A Cavity
Locating Shoulder
Depth 41,1 mm.



TYPICAL CARTRIDGES USED WITH THIS BODY

RVGD - ***	Page	1.21
PVHA - ***	Page	3.15
PVHB - ***	Page	3.17
CWGA - ***	Page	4.19
CWGG - ***	Page	4.21
CVGV - ***	Page	4.23
FVEA - ***	Page	6.05

Instructions for ordering complete cartridge and body assemblies. Page viii
Pressure ratings, material specifications. Page 11.02

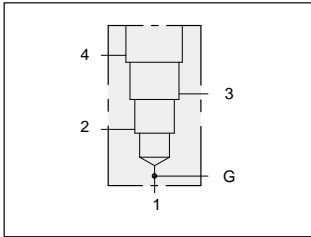
Parts 1 & 2	Port 3	Port 4	Gauge Port	ALUMINIUM		SG IRON	
				Model Code	List Price	Model Code	List Price
.75 NPTF	.75 NPTF	.25 NPTF	.25 NPTF	PAD		PAD/S	
1.00 NPTF	.75 NPTF	.25 NPTF	.25 NPTF	PAE		PAE/S	
1.25 NPTF	.75 NPTF	.25 NPTF	.25 NPTF	PAF		PAF/S	
SAE-12	SAE-12	SAE-6	.25 NPTF	PAL		PAL/S	
SAE-16	SAE-12	SAE-6	.25 NPTF	PAM		PAM/S	
SAE-20	SAE-12	SAE-6	.25 NPTF	PAN		PAN/S	
.75 BSPP	.75 BSPP	.25 BSPP	.25 BSPP	PAW		PAW/S	
1.00 BSPP	.75 BSPP	.25 BSPP	.25 BSPP	PAX		PAX/S	
1.25 BSPP	.75 BSPP	.25 BSPP	.25 BSPP	PAY		PAY/S	



LINE MOUNT BODIES



- Aluminium rated to 210 bar and SG Iron rated to 350 bar.

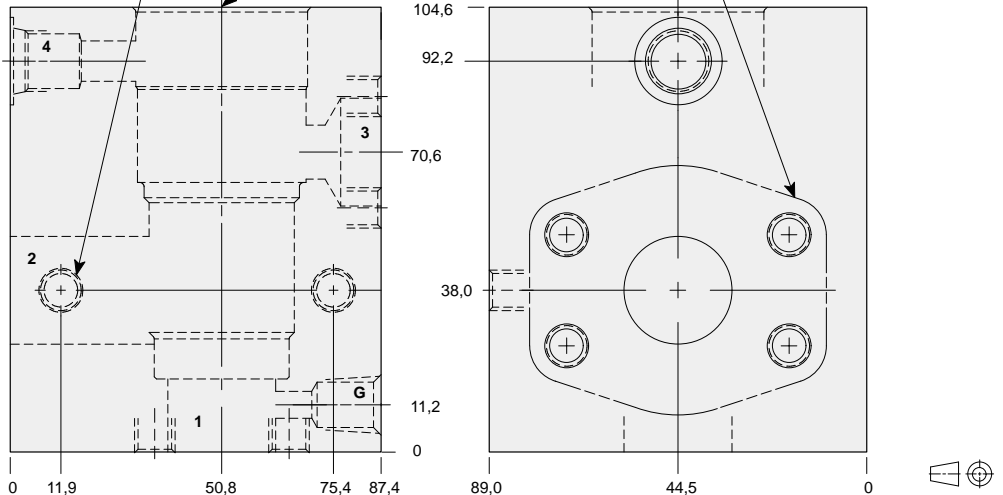


90 degree 1.00" SAE Code 61 flange port body with gauge port.

Mounting Holes:
(opposite side)
Inch: .375-16 UNC-2B
x 19,0 mm. deep.
Metric: M10 x 1.50-6H
x 19,0 mm. deep.
2 places.

T-23A Cavity
Locating Shoulder
Depth 41,4 mm.

1.00" SAE Code 61
4-Bolt Flange Pattern
3 places.

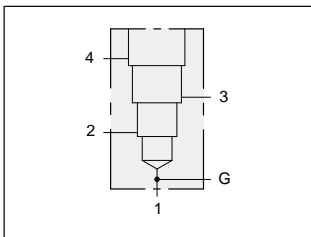


TYPICAL CARTRIDGES USED WITH THIS BODY

RVGD - ***	Page	1.21
PVHA - ***	Page	3.15
PVHB - ***	Page	3.17
CWGA - ***	Page	4.19
CWGG - ***	Page	4.21
CVGV - ***	Page	4.23
FVEA - ***	Page	6.05

Instructions for ordering complete cartridge and body assemblies.	Page	viii
Pressure ratings, material specifications.	Page	11.02
SAE Specifications.	Page	11.03

Mounting Hole Dimensions	Port 4	Gauge Port	ALUMINIUM		SG IRON	
			Model Code	List Price	Model Code	List Price
Inch	SAE-6	.25 NPTF	PAP		PAP/S	
Metric	.25 BSPP	.25 BSPP	PAP/M		PAP/T	

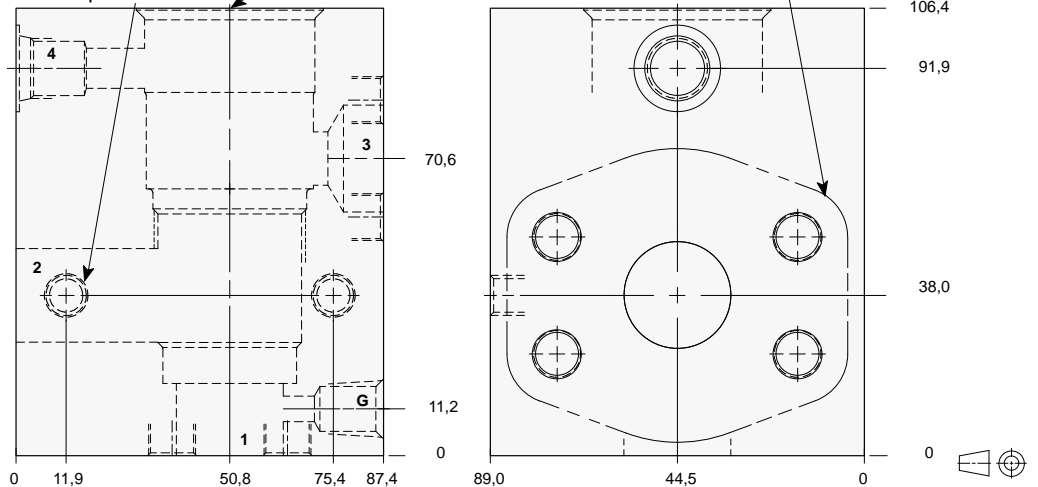


90 degree 1.00" SAE Code 62 flange port body with gauge port.

Mounting Holes:
(opposite side)
Inch: .375-16 UNC-2B
x 19,0 mm. deep.
Metric: M10 x 1.50-6H
x 19,0 mm. deep.
2 places.

T-23A Cavity
Locating Shoulder
Depth 42,9 mm.

1.00" SAE Code 62
4-Bolt Flange Pattern
3 places.



TYPICAL CARTRIDGES USED WITH THIS BODY

RVGD - ***	Page	1.21
PVHA - ***	Page	3.15
PVHB - ***	Page	3.17
CWGA - ***	Page	4.19
CWGG - ***	Page	4.21
CVGV - ***	Page	4.23
FVEA - ***	Page	6.05

Instructions for ordering complete cartridge and body assemblies.	Page	viii
Pressure ratings, material specifications.	Page	11.02
SAE Specifications.	Page	11.03

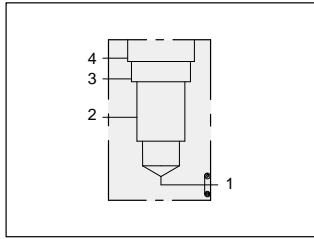
Mounting Hole Dimensions	Port 4	Gauge Port	ALUMINIUM		SG IRON	
			Model Code	List Price	Model Code	List Price
Inch	SAE-6	.25 NPTF	PA4		PA4/S	
Metric	.25 BSPP	.25 BSPP	PA4/M		PA4/T	



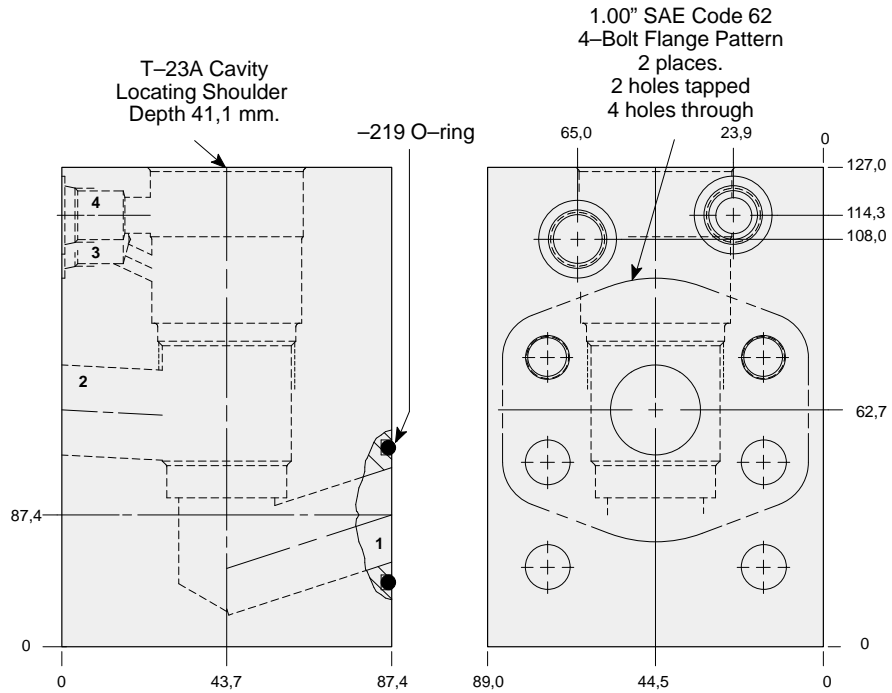
LINE MOUNT BODIES



- Aluminium rated to 210 bar and SG Iron rated to 350 bar.



Direct mount 1.00" SAE Code 62 body.



TYPICAL CARTRIDGES USED WITH THIS BODY

RVGA - ***	Page	1.19
CWGA - ***	Page	4.19
CWGG - ***	Page	4.21
CVGV - ***	Page	4.23

Cartridge seal type determines O-ring type.

Instructions for ordering complete cartridge and body assemblies. Page viii

Pressure ratings, material specifications. Page 11.02

SAE Specifications. Page 11.03

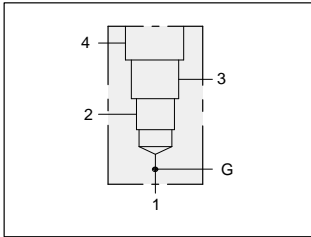
Mounting Hole Dimensions	Ports 3 & 4	ALUMINIUM		SG IRON	
		Model Code	List Price	Model Code	List Price
Inch	SAE-6	WHA		WHA/S	
Metric	.25 BSPP	WHA/M		WHA/T	



LINE MOUNT BODIES



- Aluminium rated to 210 bar and SG Iron rated to 350 bar.



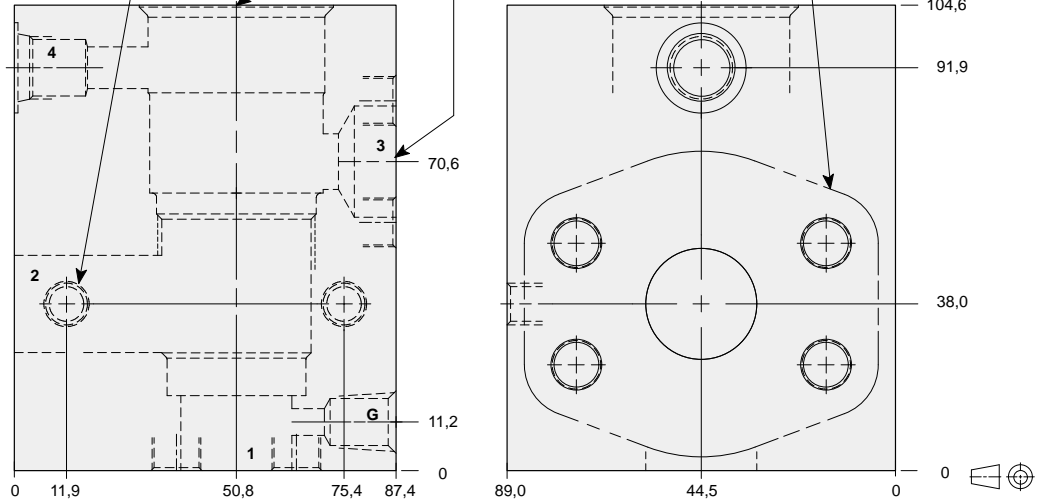
90 degree 1.25" SAE Code 61 flange port body with gauge port.

Mounting Holes:
(opposite side)
Inch: .375-16 UNC-2B
x 15,7 mm. deep.
Metric: M10 x 1.50-6H
x 15,7 mm. deep.
2 places.

T-23A Cavity
Locating Shoulder
Depth 41,1 mm.

1.00" SAE Code 61
4-Bolt Flange Pattern

1.25" SAE Code 61
4-Bolt Flange Pattern
2 places.

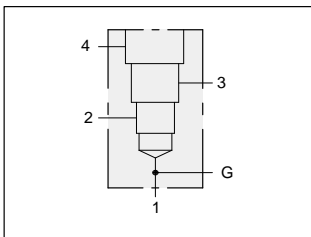


TYPICAL CARTRIDGES USED WITH THIS BODY

RVGD - ***	Page	1.21
PVHA - ***	Page	3.15
PVHB - ***	Page	3.17
CWGA - ***	Page	4.19
CWGG - ***	Page	4.21
CVGV - ***	Page	4.23
FVEA - ***	Page	6.05

Instructions for ordering complete cartridge and body assemblies.	Page	viii
Pressure ratings, material specifications.	Page	11.02
SAE Specifications.	Page	11.03

Mounting Hole Dimensions	Port 4	Gauge Port	ALUMINIUM		SG IRON	
			Model Code	List Price	Model Code	List Price
Inch	SAE-6	.25 NPTF	PAQ		PAQ/S	
Metric	.25 BSPP	.25 BSPP	PAQ/M		PAQ/T	

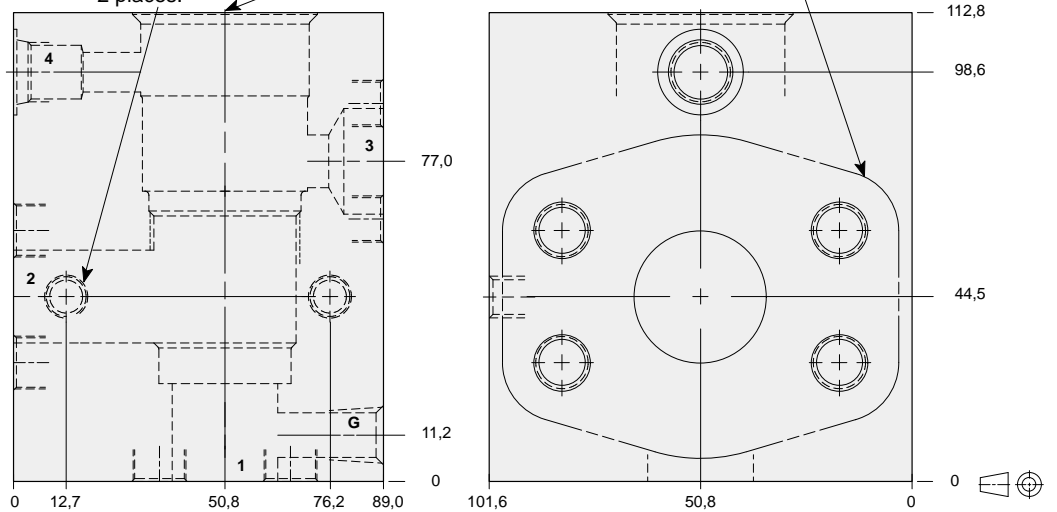


90 degree 1.25" SAE Code 62 flange port body with gauge port.

Mounting Holes:
(opposite side)
Inch: .375-16 UNC-2B
x 15,7 mm. deep.
Metric: M10 x 1.50-6H
x 15,7 mm. deep.
2 places.

T-23A Cavity
Locating Shoulder
Depth 42,9 mm.

1.25" SAE Code 62
4-Bolt Flange Pattern
3 places.



TYPICAL CARTRIDGES USED WITH THIS BODY

RVGD - ***	Page	1.21
PVHA - ***	Page	3.15
PVHB - ***	Page	3.17
CWGA - ***	Page	4.19
CWGG - ***	Page	4.21
CVGV - ***	Page	4.23
FVEA - ***	Page	6.05

Instructions for ordering complete cartridge and body assemblies.	Page	viii
Pressure ratings, material specifications.	Page	11.02
SAE Specifications.	Page	11.03

Mounting Hole Dimensions	Port 4	Gauge Port	ALUMINIUM		SG IRON	
			Model Code	List Price	Model Code	List Price
Inch	SAE-6	.25 NPTF	PA5		PA5/S	
Metric	.25 BSPP	.25 BSPP	PA5/M		PA5/T	

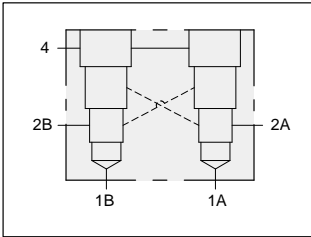
Series 3 T-23A



LINE MOUNT BODIES



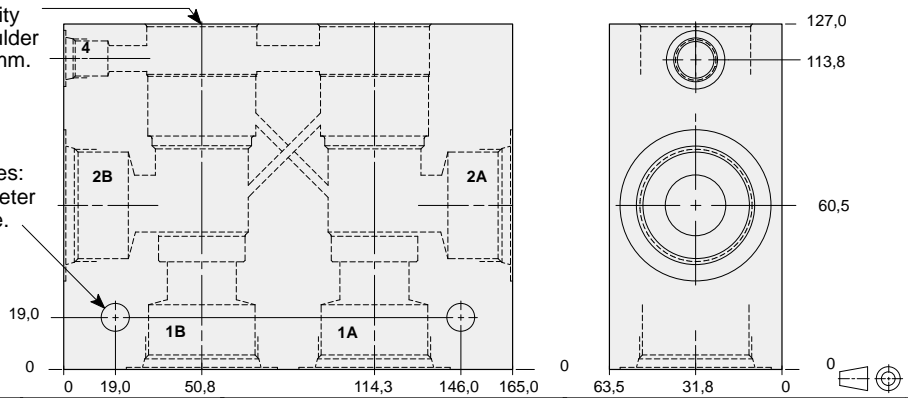
- Aluminium rated to 210 bar and SG Iron rated to 350 bar.



Two cavity 90 degree cross-piloted body with common port 4 for load control applications.

T-23A Cavity
Locating Shoulder
Depth 41,7 mm.
2 places.

Mounting Holes:
10,7 mm. diameter
through hole.
2 places.



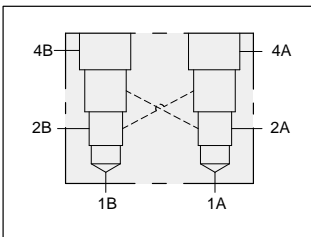
TYPICAL CARTRIDGES USED WITH THIS BODY

CWGA - ***	Page	4.19
CWGG - ***	Page	4.21
CVGV - ***	Page	4.23

Instructions for ordering complete cartridge and body assemblies. Page iii

Pressure ratings, material specifications. Page 11.02

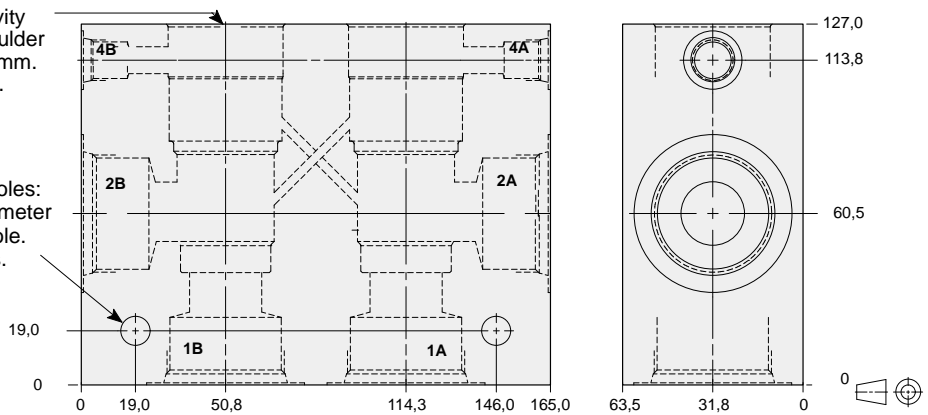
Ports 1A, 1B, 2A, & 2B	Port 4	ALUMINIUM		SG IRON	
		Model Code	List Price	Model Code	List Price
.75 NPTF	.25 NPTF	XMD		XMD/S	
1.00 NPTF	.25 NPTF	XME		XME/S	
1.25 NPTF	.25 NPTF	XMF		XMF/S	
SAE-12	SAE-6	XML		XML/S	
SAE-16	SAE-6	XMM		XMM/S	
SAE-20	SAE-6	XMN		XMN/S	
.75 BSPP	.25 BSPP	XMW		XMW/S	
1.00 BSPP	.25 BSPP	XXM		XXM/S	
1.25 BSPP	.25 BSPP	XMY		XMY/S	



Two cavity 90 degree cross-piloted body with independent port 4 for load control applications.

T-23A Cavity
Locating Shoulder
Depth 41,7 mm.
2 places.

Mounting Holes:
10,7 mm. diameter
through hole.
2 places.



TYPICAL CARTRIDGES USED WITH THIS BODY

CWGA - ***	Page	4.19
CWGG - ***	Page	4.21
CVGV - ***	Page	4.23

Instructions for ordering complete cartridge and body assemblies. Page iii

Pressure ratings, material specifications. Page 11.02

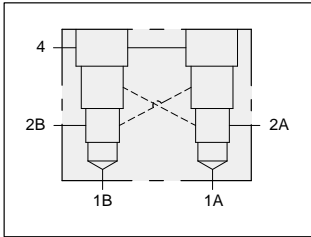
Ports 1A, 1B, 2A, & 2B	Ports 4A & 4B	ALUMINIUM		SG IRON	
		Model Code	List Price	Model Code	List Price
.75 NPTF	.25 NPTF	VAD		VAD/S	
1.00 NPTF	.25 NPTF	VAE		VAE/S	
1.25 NPTF	.25 NPTF	VAF		VAF/S	
SAE-12	SAE-6	VAL		VAL/S	
SAE-16	SAE-6	VAM		VAM/S	
SAE-20	SAE-6	VAN		VAN/S	
.75 BSPP	.25 BSPP	VAW		VAW/S	
1.00 BSPP	.25 BSPP	VAX		VAX/S	
1.25 BSPP	.25 BSPP	VAY		VAY/S	



LINE MOUNT BODIES



- Aluminium rated to 210 bar and SG Iron rated to 350 bar.

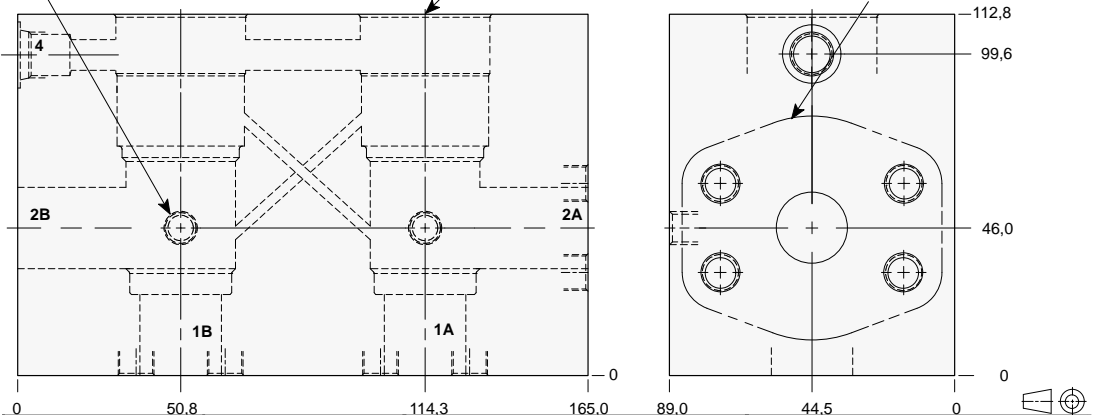


Two cavity cross-piloted 1.00" SAE Code 61 flange port body with common port 4 for load control applications.

Mounting Holes:
(opposite side)
Inch: .375-16 UNC-2B
x 15,7 mm. deep.
Metric: M10 x 1.50-6H
x 15,7 mm. deep.
2 places.

T-23A Cavity
Locating Shoulder
Depth 41,7 mm.
2 places.

1.00" SAE Code 61
4-Bolt Flange Pattern
4 places.

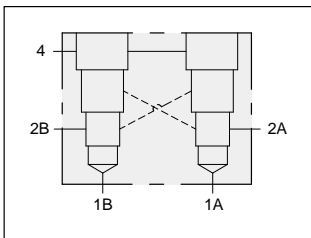


TYPICAL CARTRIDGES USED WITH THIS BODY

- CWGA - *** Page 4.19
- CWGG - *** Page 4.21
- CVGV - *** Page 4.23

- Instructions for ordering complete cartridge and body assemblies. Page iii
- Pressure ratings, material specifications. Page 11.02
- SAE Specifications. Page 11.03

Mounting Hole Dimensions	Port 4	ALUMINIUM		SG IRON	
		Model Code	List Price	Model Code	List Price
Inch	SAE-6	XMP		XMP/S	
Metric	.25 BSPP	XMP/M		XMP/T	

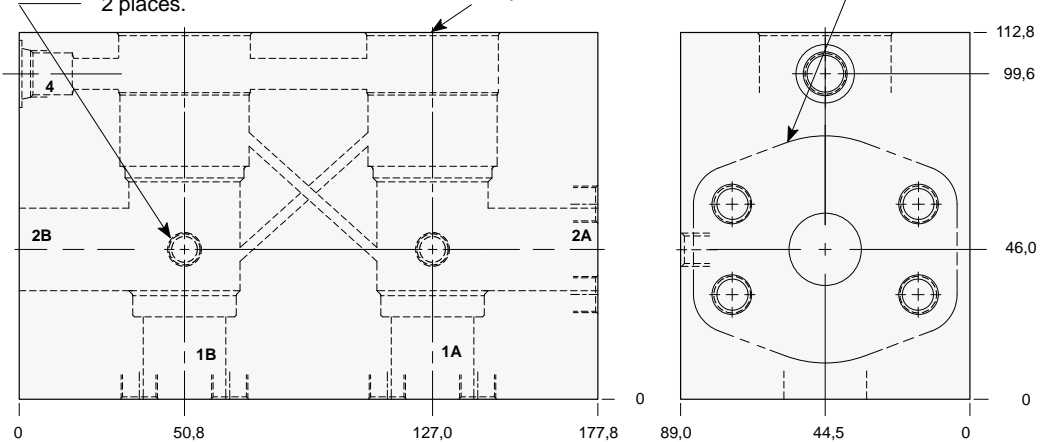


Two cavity cross-piloted 1.00" SAE Code 62 flange port body with common port 4 for load control applications.

Mounting Holes:
(opposite side)
Inch: .375-16 UNC-2B
x 15,7 mm. deep.
Metric: M10 x 1.50-6H
x 15,7 mm. deep.
2 places.

T-23A Cavity
Locating Shoulder
Depth 41,7 mm.
2 places.

1.00" SAE Code 62
4-Bolt Flange Pattern
3 places.



TYPICAL CARTRIDGES USED WITH THIS BODY

- CWGA - *** Page 4.19
- CWGG - *** Page 4.21
- CVGV - *** Page 4.23

- Instructions for ordering complete cartridge and body assemblies. Page iii
- Pressure ratings, material specifications. Page 11.02
- SAE Specifications. Page 11.03

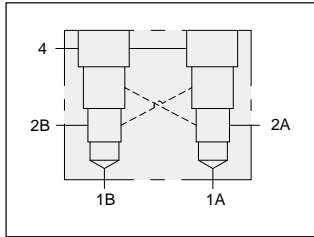
Mounting Hole Dimensions	Port 4	ALUMINIUM		SG IRON	
		Model Code	List Price	Model Code	List Price
Inch	SAE-6	XM4		XM4/S	
Metric	.25 BSPP	XM4/M		XM4/T	



LINE MOUNT BODIES



- Aluminium rated to 210 bar and SG Iron rated to 350 bar.



Two cavity cross-piloted 1.25" SAE Code 61 flange port body with common port 4 for load control applications.

Mounting Holes:
(opposite side)
Inch: .375-16 UNC-2B
x 15,7 mm. deep.
Metric: M10 x 1.50-6H
x 15,7 mm. deep.
2 places.

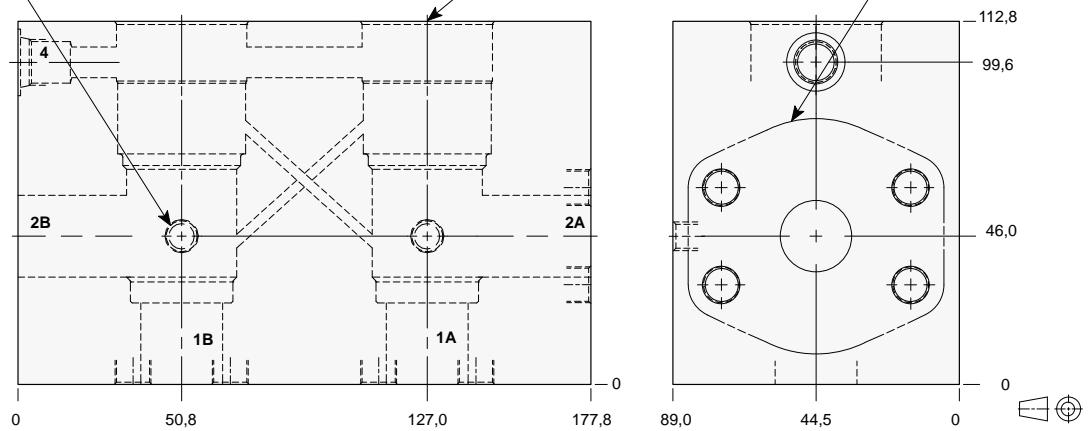
T-23A Cavity
Locating Shoulder
Depth 41,7 mm.
2 places.

1.25" SAE Code 61
4-Bolt Flange Pattern
4 places

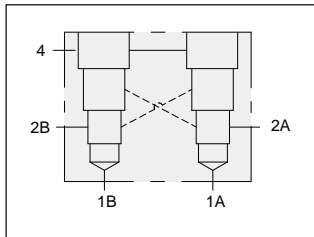
TYPICAL CARTRIDGES USED WITH THIS BODY

CWGA - *** Page 4.19
CWGG - *** Page 4.21
CVGV - *** Page 4.23

Instructions for ordering complete cartridge and body assemblies. Page iii
Pressure ratings, material specifications. Page 11.02
SAE Specifications. Page 11.03



Mounting Hole Dimensions	Port 4	ALUMINIUM		SG IRON	
		Model Code	List Price	Model Code	List Price
Inch	SAE-6	XMQ		XMQ/S	
Metric	.25 BSPP	XMQ/M		XMQ/T	



Two cavity cross-piloted 1.25" SAE Code 62 flange port body with common port 4 for load control applications.

Mounting Holes:
(opposite side)
Inch: .375-16 UNC-2B
x 15,7 mm. deep.
Metric: M10 x 1.50-6H
x 15,7 mm. deep.
2 places.

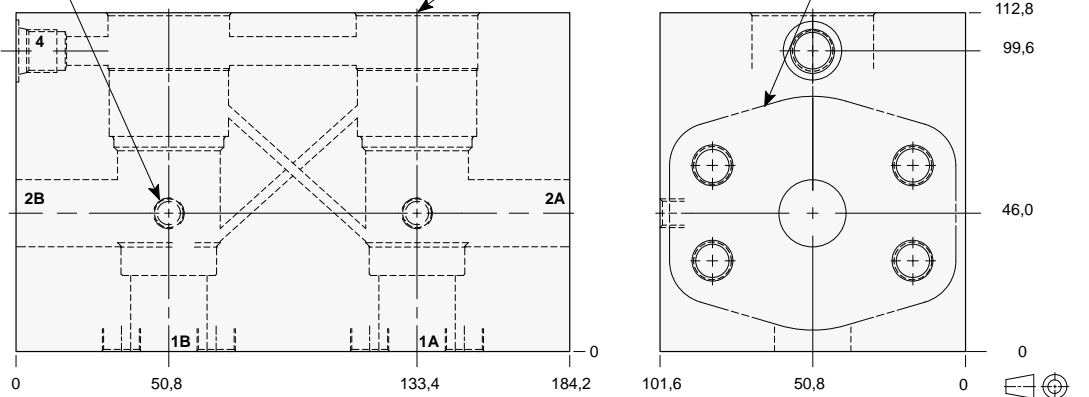
T-23A Cavity
Locating Shoulder
Depth 41,7 mm.
2 places.

1.25" SAE Code 62
4-Bolt Flange Pattern
4 places.

TYPICAL CARTRIDGES USED WITH THIS BODY

CWGA - *** Page 4.19
CWGG - *** Page 4.21
CVGV - *** Page 4.23

Instructions for ordering complete cartridge and body assemblies. Page iii
Pressure ratings, material specifications. Page 11.02
SAE Specifications. Page 11.03



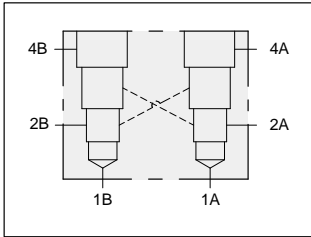
Mounting Hole Dimensions	Port 4	ALUMINIUM		SG IRON	
		Model Code	List Price	Model Code	List Price
Inch	SAE-6	XM5		XM5/S	
Metric	.25 BSPP	XM5/M		XM5/T	



LINE MOUNT BODIES



- Aluminium rated to 210 bar and SG Iron rated to 350 bar.

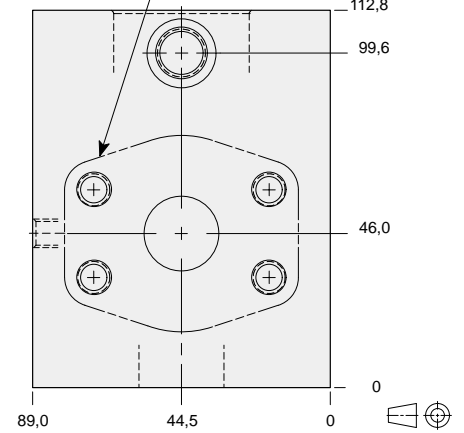
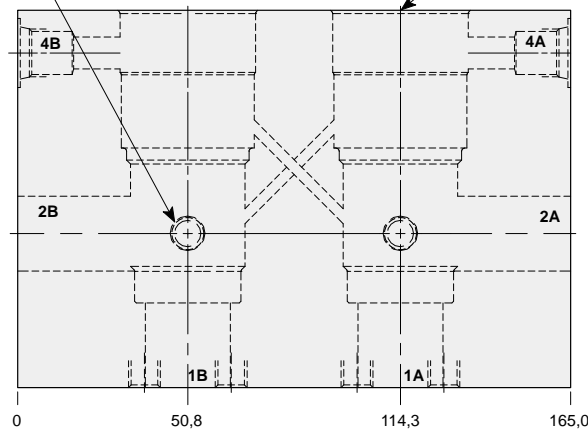


Two cavity cross-piloted 1.00" SAE Code 61 flange port body with independent port 4 for load control applications.

Mounting Holes:
(opposite side)
Inch: .375-16 UNC-2B
x 15,7 mm. deep.
Metric: M10 x 1.50-6H
x 15,7 mm. deep.
2 places.

T-23A Cavity
Locating Shoulder
Depth 41,7 mm.
2 places.

1.00" SAE Code 61
4-Bolt Flange Pattern
4 places.

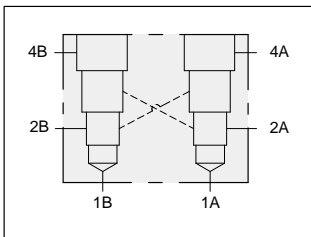


TYPICAL CARTRIDGES USED WITH THIS BODY

- CWGA - *** Page 4.19
- CWGG - *** Page 4.21
- CVGV - *** Page 4.23

- Instructions for ordering complete cartridge and body assemblies. Page iii
- Pressure ratings, material specifications. Page 11.02
- SAE Specifications. Page 11.03

Mounting Hole Dimensions	Ports 4A & 4B	ALUMINIUM		SG IRON	
		Model Code	List Price	Model Code	List Price
Inch	SAE-6	VAP		VAP/S	
Metric	.25 BSPP	VAP/M		VAP/T	

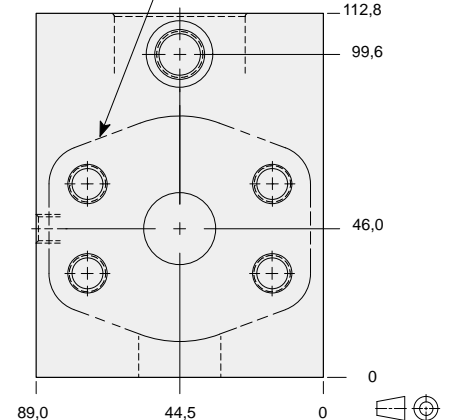
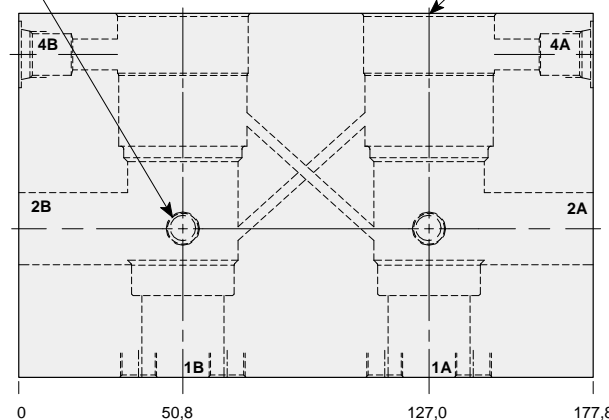


Two cavity cross-piloted 1.00" SAE Code 62 flange port body with independent port 4 for load control applications.

Mounting Holes:
(opposite side)
Inch: .375-16 UNC-2B
x 15,7 mm. deep.
Metric: M10 x 1.50-6H
x 15,7 mm. deep.
2 places.

T-23A Cavity
Locating Shoulder
Depth 41,7 mm.
2 places.

1.00" SAE Code 62
4-Bolt Flange Pattern
4 places.



TYPICAL CARTRIDGES USED WITH THIS BODY

- CWGA - *** Page 4.19
- CWGG - *** Page 4.21
- CVGV - *** Page 4.23

- Instructions for ordering complete cartridge and body assemblies. Page iii
- Pressure ratings, material specifications. Page 11.02
- SAE Specifications. Page 11.03

Mounting Hole Dimensions	Ports 4A & 4B	ALUMINIUM		SG IRON	
		Model Code	List Price	Model Code	List Price
Inch	SAE-6	VA4		VA4/S	
Metric	.25 BSPP	VA4/M		VA4/T	

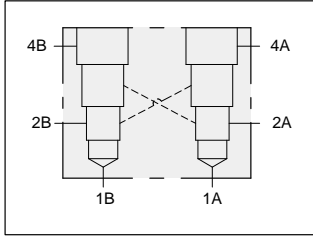


LINE MOUNT BODIES



- Aluminium rated to 210 bar and SG Iron rated to 350 bar.

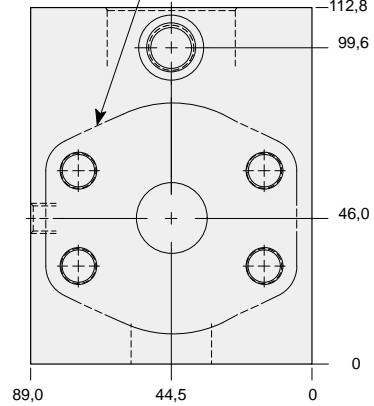
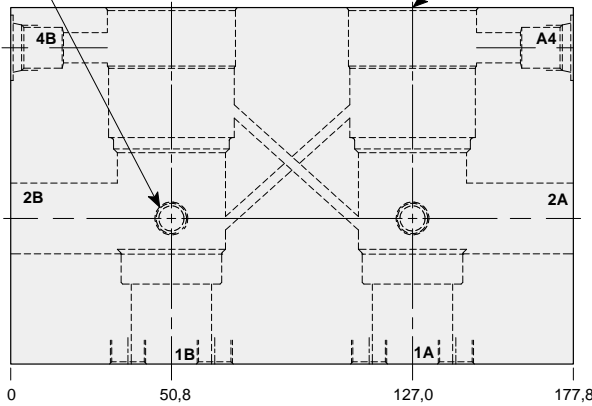
Two cavity cross-piloted 1.25" SAE Code 61 flange port body with independent port 4 for load control applications.



Mounting Holes:
(opposite side)
Inch: .375-16 UNC-2B
x 15,7 mm. deep.
Metric: M10 x 1.50-6H
x 15,7 mm. deep.
2 places.

T-23A Cavity
Locating Shoulder
Depth 41,7 mm.
2 places.

1.25" SAE Code 61
4-Bolt Flange Pattern
4 places

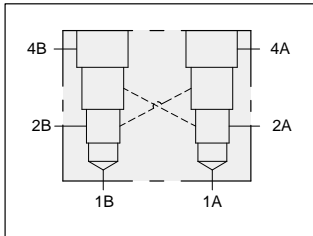


TYPICAL CARTRIDGES USED WITH THIS BODY

CWGA - ***	Page	4.19
CWGG - ***	Page	4.21
CVGV - ***	Page	4.23
Instructions for ordering complete cartridge and body assemblies. Page iii		
Pressure ratings, material specifications. Page 11.02		
SAE Specifications. Page 11.03		

Mounting Hole Dimensions	Ports 4A & 4B	ALUMINIUM		SG IRON	
		Model Code	List Price	Model Code	List Price
Inch	SAE-6	VAQ		VAQ/S	
Metric	.25 BSPP	VAQ/M		VAQ/T	

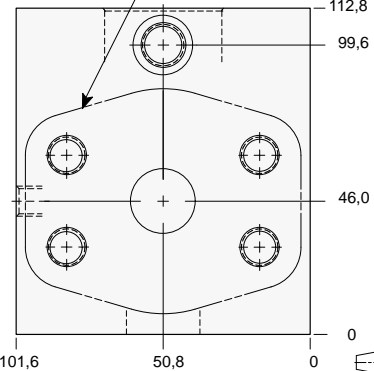
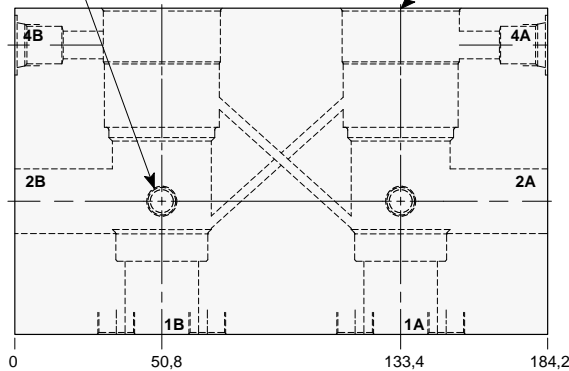
Two cavity cross-piloted 1.25" SAE Code 62 flange port body with independent port 4 for load control applications.



Mounting Holes:
(opposite side)
Inch: .375-16 UNC-2B
x 15,7 mm. deep.
Metric: M10 x 1.50-6H
x 15,7 mm. deep.
2 places.

T-23A Cavity
Locating Shoulder
Depth 41,7 mm.
2 places.

1.25" SAE Code 62
4-Bolt Flange Pattern
4 places.



TYPICAL CARTRIDGES USED WITH THIS BODY

CWGA - ***	Page	4.19
CWGG - ***	Page	4.21
CVGV - ***	Page	4.23
Instructions for ordering complete cartridge and body assemblies. Page iii		
Pressure ratings, material specifications. Page 11.02		
SAE Specifications. Page 11.03		

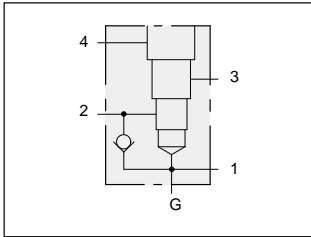
Mounting Hole Dimensions	Ports 4A & 4B	ALUMINIUM		SG IRON	
		Model Code	List Price	Model Code	List Price
Inch	SAE-6	VA5		VA5/S	
Metric	.25 BSPP	VA5/M		VA5/T	



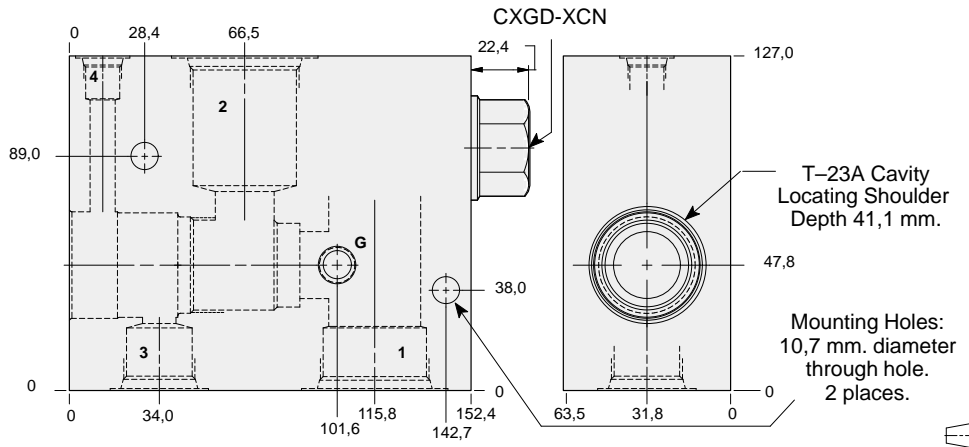
LINE MOUNT BODIES



- Aluminium rated to 210 bar and SG Iron rated to 350 bar.



Body with reverse free flow check and gauge port for reducing/relieving applications.



TYPICAL CARTRIDGES USED WITH THIS BODY

PVHA - *** Page 3.15
 PVHB - *** Page 3.17

Cartridge seal type determines check valve seal type.

Instructions for ordering complete cartridge and body assemblies. Page viii

Pressure ratings, material specifications. Page 11.02

Ports 1 & 2	Port 3	Port 4	Gauge Port	ALUMINIUM		SG IRON	
				Model Code	List Price	Model Code	List Price
.75 NPTF	.75 NPTF	.25 NPTF	.25 NPTF	P4D		P4D/S	
1.00 NPTF	.75 NPTF	.25 NPTF	.25 NPTF	P4E		P4E/S	
1.25 NPTF	.75 NPTF	.25 NPTF	.25 NPTF	P4F		P4F/S	
SAE-12	SAE-12	SAE-6	.25 NPTF	P4L		P4L/S	
SAE-16	SAE-12	SAE-6	.25 NPTF	P4M		P4M/S	
SAE-20	SAE-12	SAE-6	.25 NPTF	P4N		P4N/S	
.75 BSPP	.75 BSPP	.25 BSPP	.25 BSPP	P4W		P4W/S	
1.00 BSPP	.75 BSPP	.25 BSPP	.25 BSPP	P4X		P4X/S	
1.25 BSPP	.75 BSPP	.25 BSPP	.25 BSPP	P4Y		P4Y/S	

Series 3 T-23A

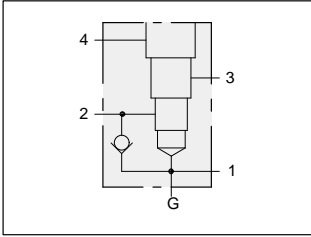


LINE MOUNT BODIES



- Aluminium rated to 210 bar and SG Iron rated to 350 bar.

1.00" SAE Code 61 flange port body with reverse free flow check and gauge port for reducing/relieving applications.



TYPICAL CARTRIDGES USED WITH THIS BODY

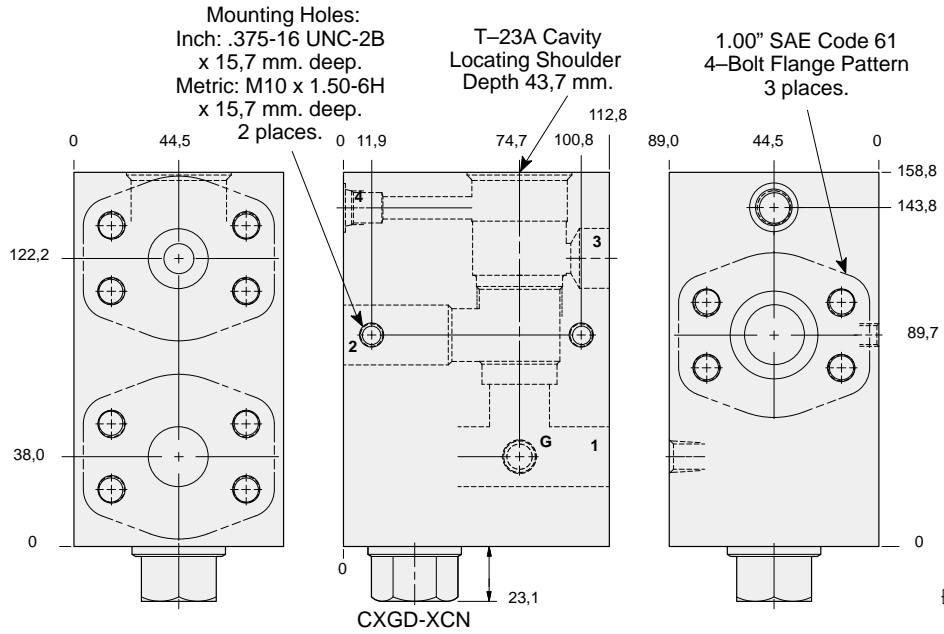
PVHA - *** Page 3.15
 PVHB - *** Page 3.17

Cartridge seal type determines check valve seal type.

Instructions for ordering complete cartridge and body assemblies. Page viii

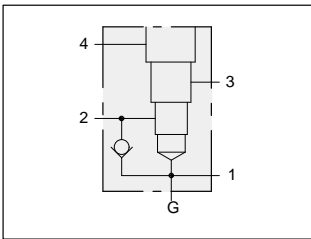
Pressure ratings, material specifications. Page 11.02

SAE Specifications. Page 11.03



Mounting Hole Dimensions	Port 4	Gauge Port	ALUMINIUM		SG IRON	
			Model Code	List Price	Model Code	List Price
Inch	SAE-6	.25 NPTF	P4P		P4P/S	
Metric	.25 BSPP	.25 BSPP	P4P/M		P4P/T	

1.00" SAE Code 62 flange port body with reverse free flow check and gauge port for reducing/relieving applications.



TYPICAL CARTRIDGES USED WITH THIS BODY

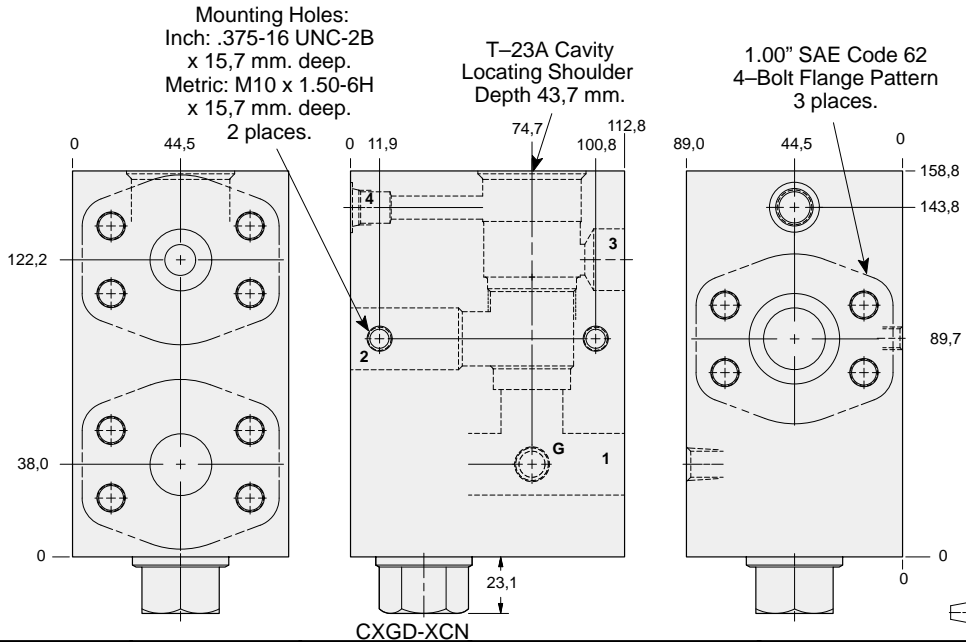
PVHA - *** Page 3.15
 PVHB - *** Page 3.17

Cartridge seal type determines check valve seal type.

Instructions for ordering complete cartridge and body assemblies. Page viii

Pressure ratings, material specifications. Page 11.02

SAE Specifications. Page 11.03



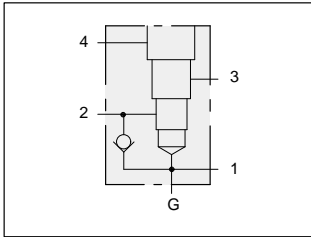
Mounting Hole Dimensions	Port 4	Gauge Port	ALUMINIUM		SG IRON	
			Model Code	List Price	Model Code	List Price
Inch	SAE-6	.25 NPTF	P44		P44/S	
Metric	.25 BSPP	.25 BSPP	P44/M		P44/T	



LINE MOUNT BODIES



- Aluminium rated to 210 bar and SG Iron rated to 350 bar.



1.25" SAE Code 61 flange port body with reverse free flow check and gauge port for reducing/relieving applications.

TYPICAL CARTRIDGES USED WITH THIS BODY

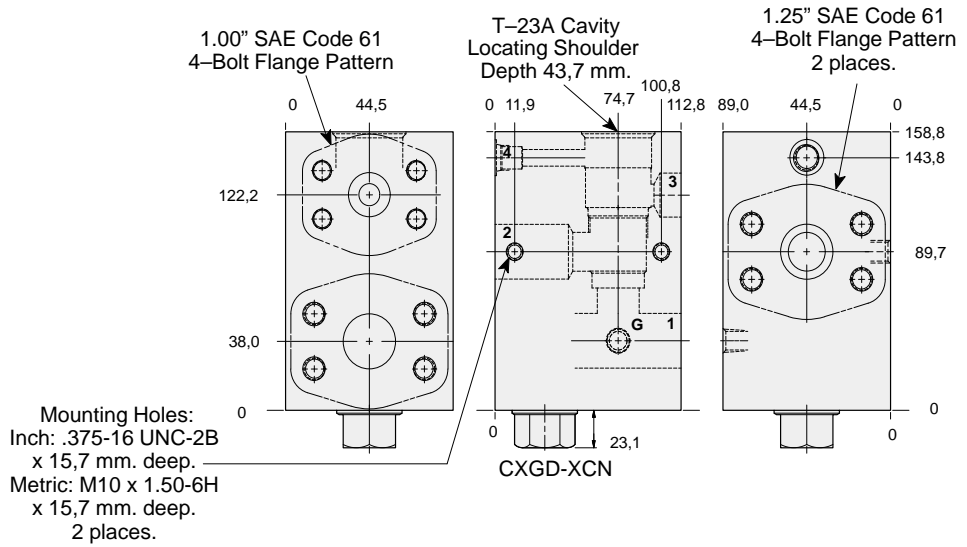
PVHA - *** Page 3.15
 PVHB - *** Page 3.17

Cartridge seal type determines check valve seal type.

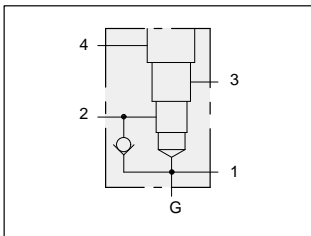
Instructions for ordering complete cartridge and body assemblies. Page viii

Pressure ratings, material specifications. Page 11.02

SAE Specifications. Page 11.03



Mounting Hole Dimensions	Port 3 SAE Code 61	Port 4	Gauge Port	ALUMINIUM		SG IRON	
				Model Code	List Price	Model Code	List Price
Inch	1.00"	SAE-6	.25 NPTF	P4Q		P4Q/S	
Metric	1.00"	.25 BSPP	.25 BSPP	P4Q/M		P4Q/T	



1.25" SAE Code 62 flange port body with reverse free flow check and gauge port for reducing/relieving applications.

TYPICAL CARTRIDGES USED WITH THIS BODY

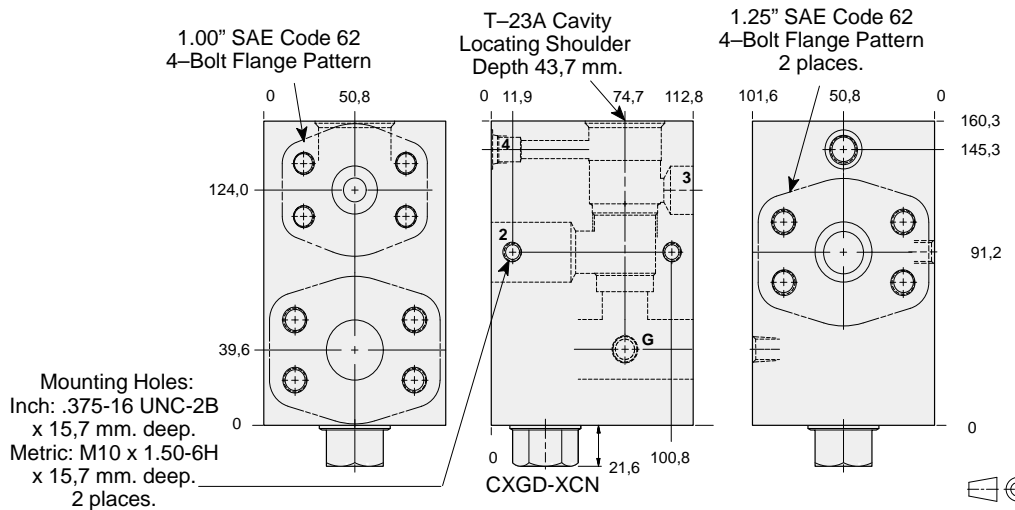
PVHA - *** Page 3.15
 PVHB - *** Page 3.17

Cartridge seal type determines check valve seal type.

Instructions for ordering complete cartridge and body assemblies. Page viii

Pressure ratings, material specifications. Page 11.02

SAE Specifications. Page 11.03



Mounting Hole Dimensions	Port 3 SAE Code 62	Port 4	Gauge Port	ALUMINIUM		SG IRON	
				Model Code	List Price	Model Code	List Price
Inch	1.00"	SAE-6	.25 NPTF	P45		P45/S	
Metric	1.00"	.25 BSPP	.25 BSPP	P45/M		P45/T	