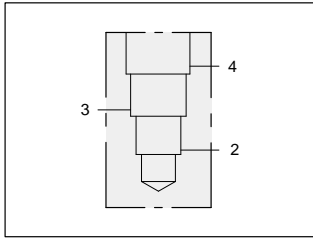




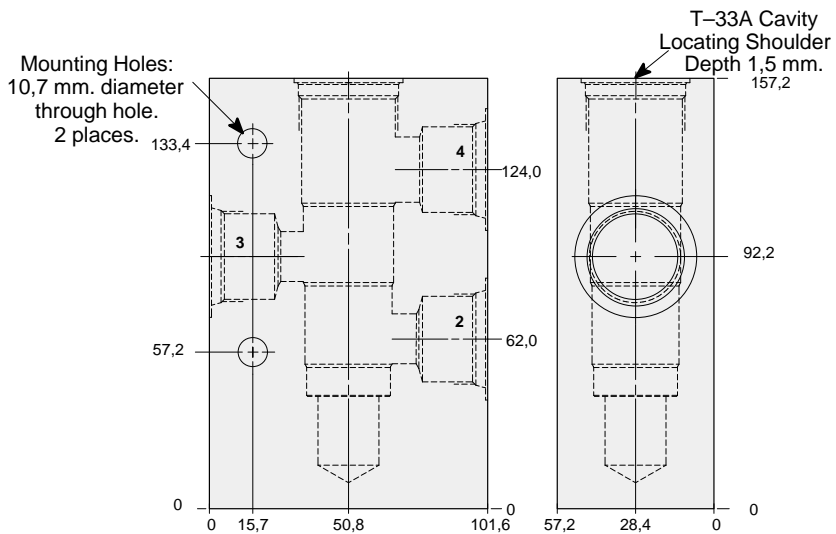
LINE MOUNT BODIES



- Aluminium rated to 210 bar and SG Iron rated to 350 bar.



Body for flow divider/combiner applications.



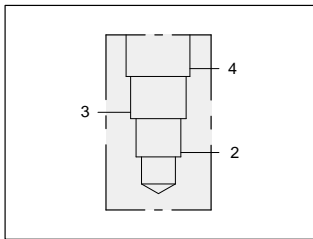
TYPICAL CARTRIDGES USED WITH THIS BODY

FSED - ***	Page	7.09
FSEA - ***	Page	7.11
FSES - ***	Page	7.13
FSEH - ***	Page	7.15
DSGH - ***	Page	10.07

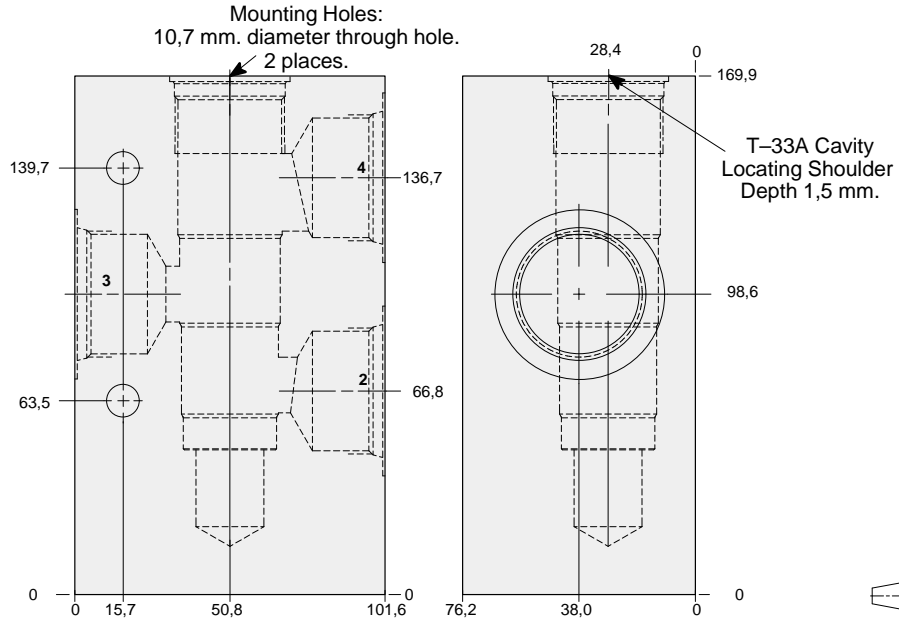
Instructions for ordering complete cartridge and body assemblies. Page viii

Pressure ratings, material specifications. Page 11.02

Parts 2, 3 & 4	ALUMINIUM		SG IRON	
	Model Code	List Price	Model Code	List Price
.75 NPTF	PMD		PMD/S	
1.00 NPTF	PME		PME/S	
SAE-12	PML		PML/S	
SAE-16	PMM		PMM/S	
.75 BSPP	PMW		PMW/S	
1.00 BSPP	PMX		PMX/S	



Body for flow divider/combiner applications.



TYPICAL CARTRIDGES USED WITH THIS BODY

FSED - ***	Page	7.09
FSEA - ***	Page	7.11
FSES - ***	Page	7.13
FSEH - ***	Page	7.15
DSGH - ***	Page	10.07

Instructions for ordering complete cartridge and body assemblies. Page viii

Pressure ratings, material specifications. Page 11.02

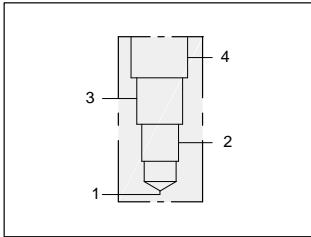
Parts 2, 3 & 4	ALUMINIUM		SG IRON	
	Model Code	List Price	Model Code	List Price
1.25 NPTF	PMF		PMF/S	
SAE-20	PMN		PMN/S	
1.25 BSPP	PMY		PMY/S	



LINE MOUNT BODIES

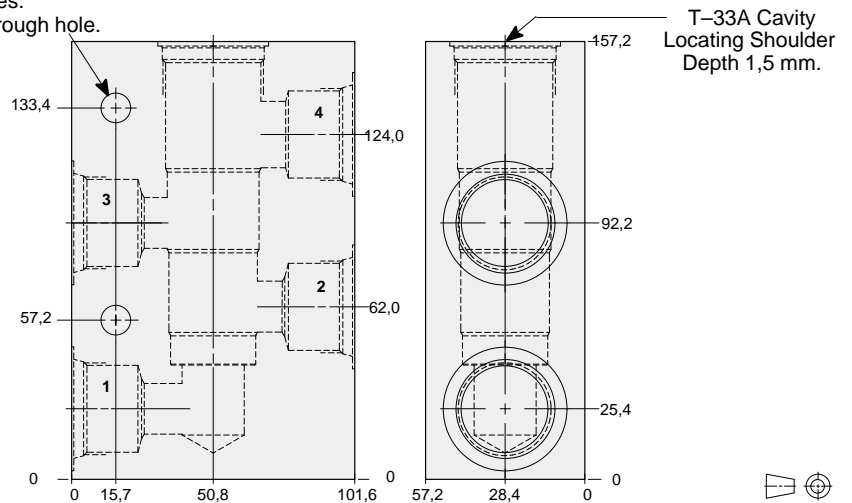


- Aluminium rated to 210 bar and SG Iron rated to 350 bar.



Four port body.

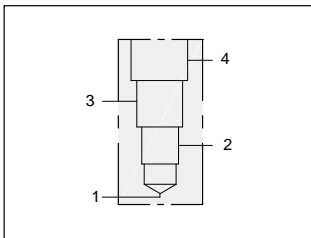
Mounting Holes:
10,7 mm. diameter through hole.
2 places.



TYPICAL CARTRIDGES USED WITH THIS BODY

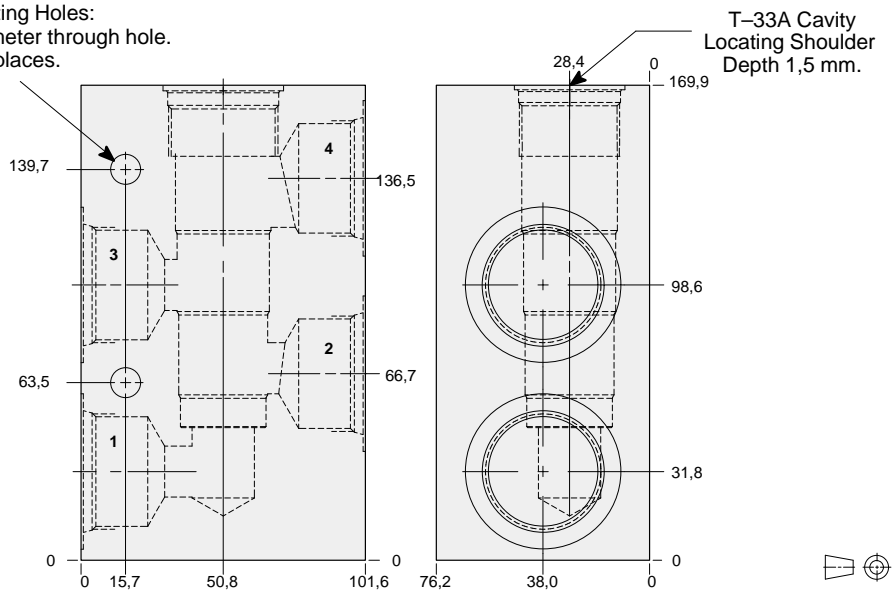
Instructions for ordering complete cartridge and body assemblies. Page viii
Pressure ratings, material specifications. Page 11.02

Ports 1 & 2, 3 & 4	ALUMINIUM		SG IRON	
	Model Code	List Price	Model Code	List Price
.75 NPTF	PND		PND/S	
1.00 NPTF	PNE		PNE/S	
SAE-12	PNL		PNL/S	
SAE-16	PNM		PNM/S	
.75 BSPP	PNW		PNW/S	
1.00 BSPP	PNX		PNX/S	



Four port body.

Mounting Holes:
10,7 mm. diameter through hole.
2 places.



TYPICAL CARTRIDGES USED WITH THIS BODY

Instructions for ordering complete cartridge and body assemblies. Page viii
Pressure ratings, material specifications. Page 11.02

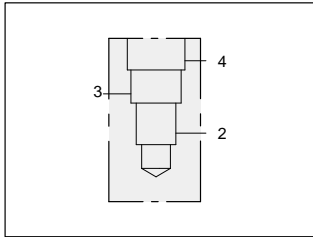
Ports 1 & 2, 3 & 4	ALUMINIUM		SG IRON	
	Model Code	List Price	Model Code	List Price
1.25 NPTF	PNF		PNF/S	
SAE-20	PNN		PNN/S	
1.25 BSPP	PNY		PNY/S	



LINE MOUNT BODIES



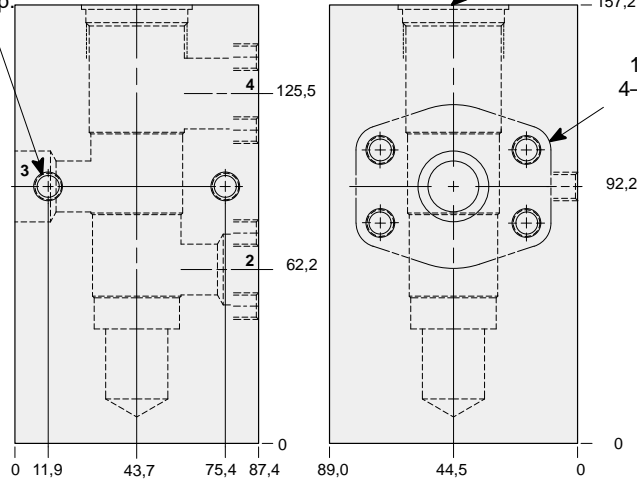
- Aluminium rated to 210 bar and SG Iron rated to 350 bar.



1.00" SAE Code 61 flange port body for flow divider/combiner applications.

Mounting Holes:
 Inch: .375-16 UNC-2B x 15,7 mm. deep.
 Metric: M10 x 1.50-6H x 15,7 mm. deep.
 2 places.

T-33A Cavity Locating Shoulder
 Depth 1,5 mm.



1.00" SAE Code 61
 4-Bolt Flange Pattern
 3 places.

TYPICAL CARTRIDGES USED WITH THIS BODY

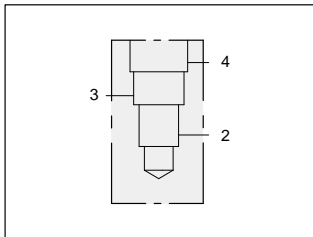
- FSED - *** Page 7.09
- FSEA - *** Page 7.11
- FSES - *** Page 7.13
- FSEH - *** Page 7.15
- DSGH - *** Page 10.07

Instructions for ordering complete cartridge and body assemblies. Page viii

Pressure ratings, material specifications. Page 11.02

SAE Specifications. Page 11.03

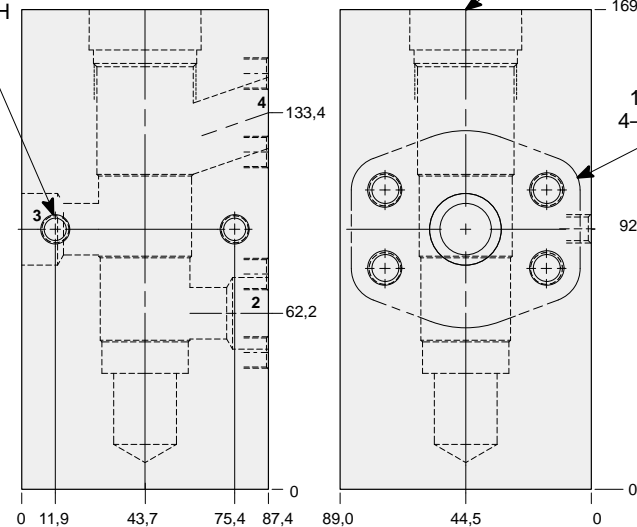
Mounting Hole Dimensions	ALUMINIUM		SG IRON	
	Model Code	List Price	Model Code	List Price
Inch	PMP		PMP/S	
Metric	PMP/M		PMP/T	



1.00" SAE Code 62 flange port body for flow divider/combiner applications.

Mounting Holes:
 Inch: .375-16 UNC-2B x 15,7 mm. deep.
 Metric: M10 x 1.50-6H x 15,7 mm. deep.
 2 places.

T-33A Cavity Locating Shoulder
 Depth 14,2 mm.



1.00" SAE Code 62
 4-Bolt Flange Pattern
 3 places.

TYPICAL CARTRIDGES USED WITH THIS BODY

- FSED - *** Page 7.09
- FSEA - *** Page 7.11
- FSES - *** Page 7.13
- FSEH - *** Page 7.15
- DSGH - *** Page 10.07

Instructions for ordering complete cartridge and body assemblies. Page viii

Pressure ratings, material specifications. Page 11.02

SAE Specifications. Page 11.03

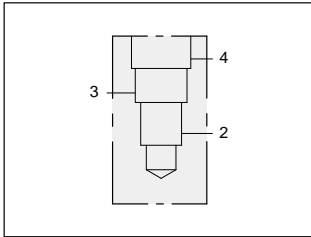
Mounting Hole Dimensions	ALUMINIUM		SG IRON	
	Model Code	List Price	Model Code	List Price
Inch	PM4		PM4/S	
Metric	PM4/M		PM4/T	



LINE MOUNT BODIES



- Aluminium rated to 210 bar and SG Iron rated to 350 bar.

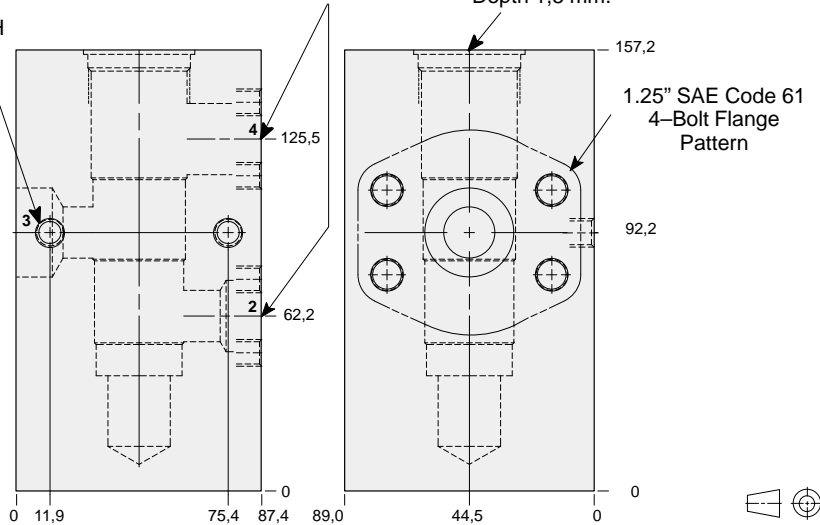


1.25" SAE Code 61 flange port body for flow divider/combiner applications.

Mounting Holes:
Inch: .375-16 UNC-2B
x 15,7 mm. deep.
Metric: M10 x 1.50-6H
x 15,7 mm. deep.
2 places.

1.00" SAE Code 61
4-Bolt Flange Pattern
2 places.

T-33A Cavity
Locating Shoulder
Depth 1,5 mm.

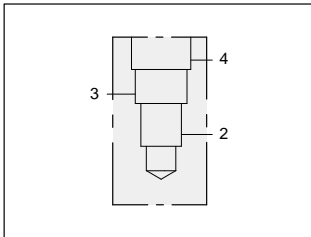


TYPICAL CARTRIDGES USED WITH THIS BODY

FSED - ***	Page	7.09
FSEA - ***	Page	7.11
FSES - ***	Page	7.13
FSEH - ***	Page	7.15
DSGH - ***	Page	10.07

Instructions for ordering complete cartridge and body assemblies.	Page	viii
Pressure ratings, material specifications.	Page	11.02
SAE Specifications.	Page	11.03

Mounting Hole Dimensions	Ports 2 & 4 SAE Code 61	ALUMINIUM		SG IRON	
		Model Code	List Price	Model Code	List Price
Inch	1.00"	PMQ		PMQ/S	
Metric	1.00"	PMQM		PMQ/T	

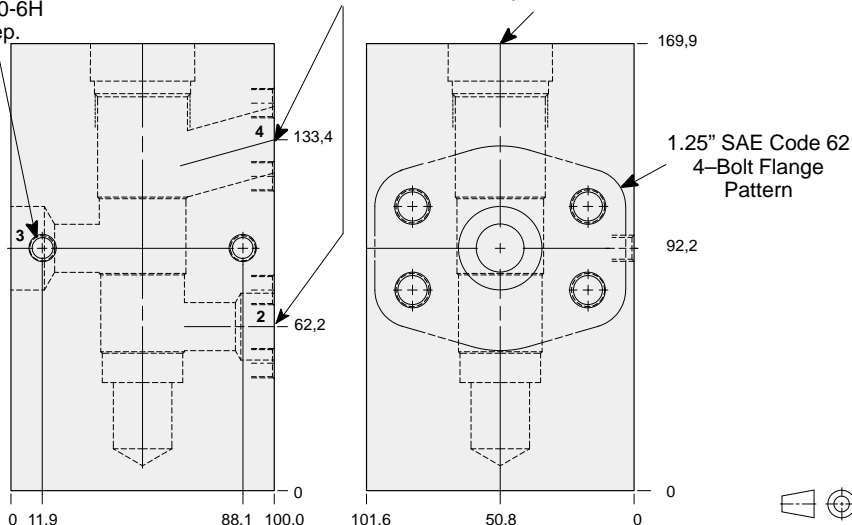


1.25" SAE Code 62 flange port body for flow divider/combiner applications.

Mounting Holes:
Inch: .375-16 UNC-2B
x 15,7 mm. deep.
Metric: M10 x 1.50-6H
x 15,7 mm. deep.
2 places.

1.00" SAE Code 62
4-Bolt Flange Pattern
2 places.

T-33A Cavity
Locating Shoulder
Depth 14,2 mm.



TYPICAL CARTRIDGES USED WITH THIS BODY

FSED - ***	Page	7.09
FSEA - ***	Page	7.11
FSES - ***	Page	7.13
FSEH - ***	Page	7.15
DSGH - ***	Page	10.07

Instructions for ordering complete cartridge and body assemblies.	Page	viii
Pressure ratings, material specifications.	Page	11.02
SAE Specifications.	Page	11.03

Mounting Hole Dimensions	Ports 2 & 4 SAE Code 62	ALUMINIUM		SG IRON	
		Model Code	List Price	Model Code	List Price
Inch	1.00"	PM5		PM5/S	
Metric	1.00"	PM5/M		PM5/T	