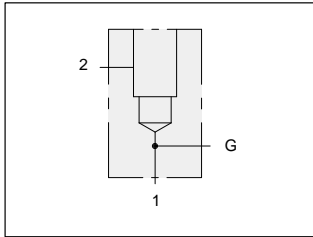




# LINE MOUNT BODIES

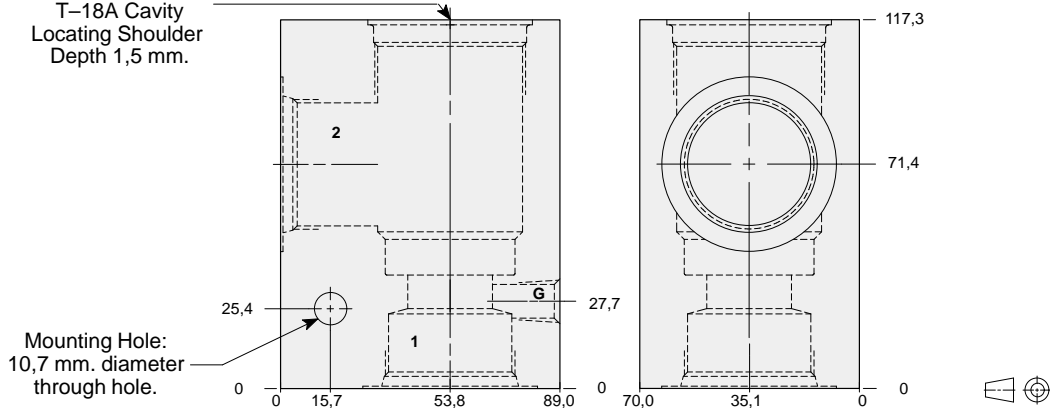


- Aluminium rated to 210 bar and SG Iron rated to 350 bar.



## 90 degree body with gauge port.

T-18A Cavity  
Locating Shoulder  
Depth 1,5 mm.

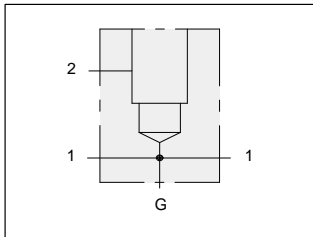


### TYPICAL CARTRIDGES USED WITH THIS BODY

RPKC - ***	Page	1.07
RPKE - ***	Page	1.09
RDJA - ***	Page	1.11
RQKB - ***	Page	1.13
RPKD - ***	Page	1.15
CXJA - ***	Page	5.09
CXID - ***	Page	5.11
NFFC - ***	Page	5.13
CNIC - ***	Page	5.15
NCGB - ***	Page	5.17
NCGC - ***	Page	5.19
FXFA - ***	Page	5.21
FCFB - ***	Page	5.23
FDFA - ***	Page	5.25
FQIA - ***	Page	10.15

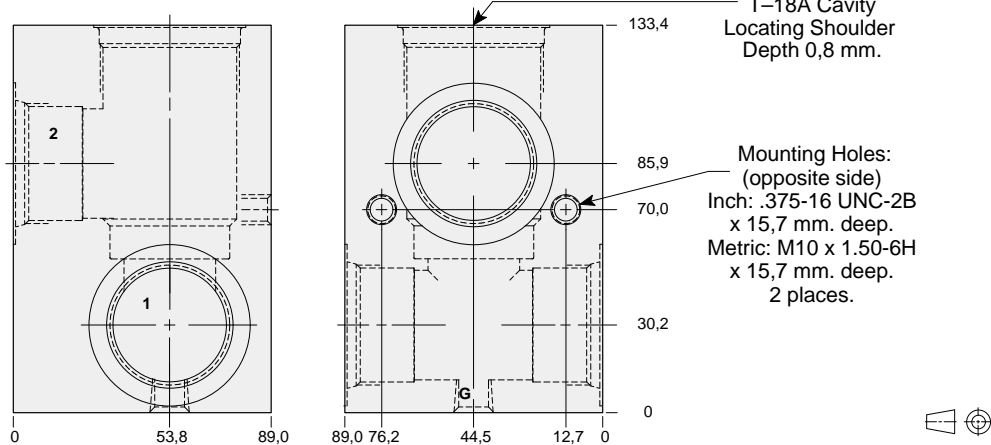
Instructions for ordering complete cartridge and body assemblies. Page viii  
Pressure ratings, material specifications. Page 11.02

Ports 1 & 2	Gauge Port	ALUMINIUM		SG IRON	
		Model Code	List Price	Model Code	List Price
.75 NPTF	.25 NPTF	LAD		LAD/S	
1.00 NPTF	.25 NPTF	LAE		LAE/S	
1.25 NPTF	.25 NPTF	LAF		LAF/S	
SAE-12	.25 NPTF	LAL		LAL/S	
SAE-16	.25 NPTF	LAM		LAM/S	
SAE-20	.25 NPTF	LAN		LAN/S	
.75 BSPP	.25 BSPP	LAW		LAW/S	
1.00 BSPP	.25 BSPP	LAX		LAX/S	
1.25 BSPP	.25 BSPP	LAY		LAY/S	



## Through port body with gauge port.

T-18A Cavity  
Locating Shoulder  
Depth 0,8 mm.



### TYPICAL CARTRIDGES USED WITH THIS BODY

RPKC - ***	Page	1.07
RPKE - ***	Page	1.09
RDJA - ***	Page	1.11
RQKB - ***	Page	1.13
RPKD - ***	Page	1.15
NFFC - ***	Page	5.13
CNIC - ***	Page	5.15
NCGB - ***	Page	5.17
NCGC - ***	Page	5.19
FXFA - ***	Page	5.21
FCFB - ***	Page	5.23
FDFA - ***	Page	5.25

Instructions for ordering complete cartridge and body assemblies. Page viii  
Pressure ratings, material specifications. Page 11.02

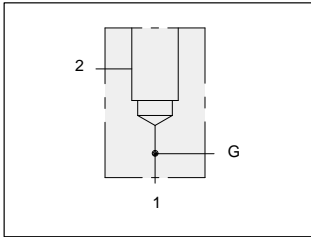
Mounting Hole Dimensions	Ports 1 & 2	Gauge Port	ALUMINIUM		SG IRON	
			Model Code	List Price	Model Code	List Price
Inch	.75 NPTF	.25 NPTF	LED		LED/S	
Inch	1.00 NPTF	.25 NPTF	LEE		LEE/S	
Inch	1.25 NPTF	.25 NPTF	LEF		LEF/S	
Inch	SAE-12	.25 NPTF	LEL		LEL/S	
Inch	SAE-16	.25 NPTF	LEM		LEM/S	
Inch	SAE-20	.25 NPTF	LEN		LEN/S	
Metric	.75 BSPP	.25 BSPP	LEW		LEW/S	
Metric	1.00 BSPP	.25 BSPP	LEX		LEX/S	
Metric	1.25 BSPP	.25 BSPP	LEY		LEY/S	



# LINE MOUNT BODIES



- Aluminium rated to 210 bar and SG Iron rated to 350 bar.

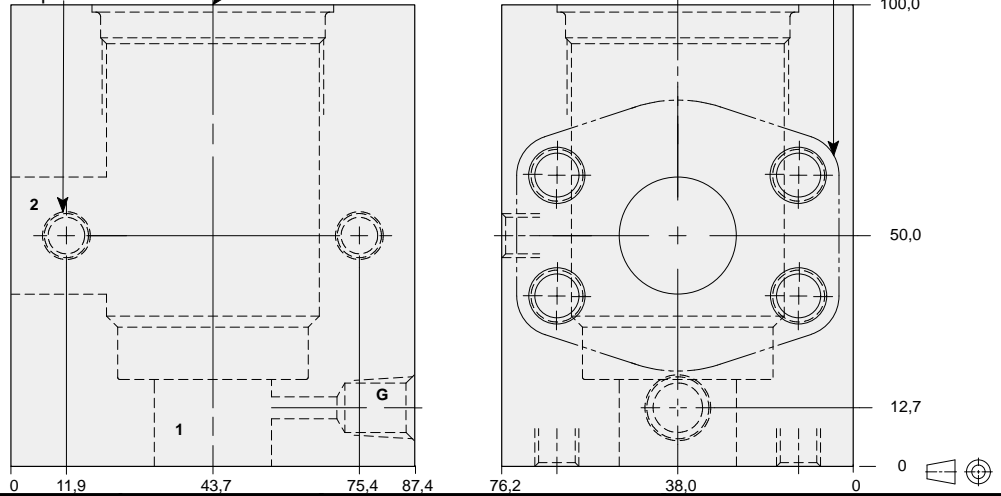


## 90 degree 1.00" SAE Code 61 flange port body with gauge port.

Mounting Holes:  
(opposite side)  
Inch: .375-16 UNC-2B  
x 15,7 mm. deep.  
Metric: M10 x 1.50-6H  
x 15,7 mm. deep.  
2 places.

T-18A Cavity  
Locating Shoulder  
Depth 1,5 mm.

1.00" SAE Code 61  
4-Bolt Flange Pattern  
2 places.



### TYPICAL CARTRIDGES USED WITH THIS BODY

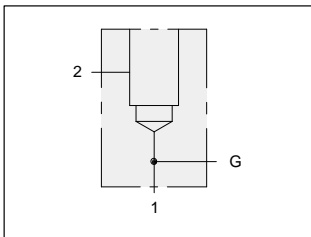
RPKC - ***	Page	1.07
RPKE - ***	Page	1.09
RDJA - ***	Page	1.11
RQKB - ***	Page	1.13
RPKD - ***	Page	1.15
CXJA - ***	Page	5.09
CXID - ***	Page	5.11
NFFC - ***	Page	5.13
CNIC - ***	Page	5.15
NCGB - ***	Page	5.17
NCGC - ***	Page	5.19
FXFA - ***	Page	5.21
FCFB - ***	Page	5.23
FDFA - ***	Page	5.25
FQIA - ***	Page	10.15

Instructions for ordering complete cartridge and body assemblies. Page viii

Pressure ratings, material specifications. Page 11.02

SAE Specifications. Page 11.03

Mounting Hole Dimensions	Gauge Port	ALUMINIUM		SG IRON	
		Model Code	List Price	Model Code	List Price
Inch	.25 NPTF	LAP		LAP/S	
Metric	.25 BSPP	LAP/M		LAP/T	

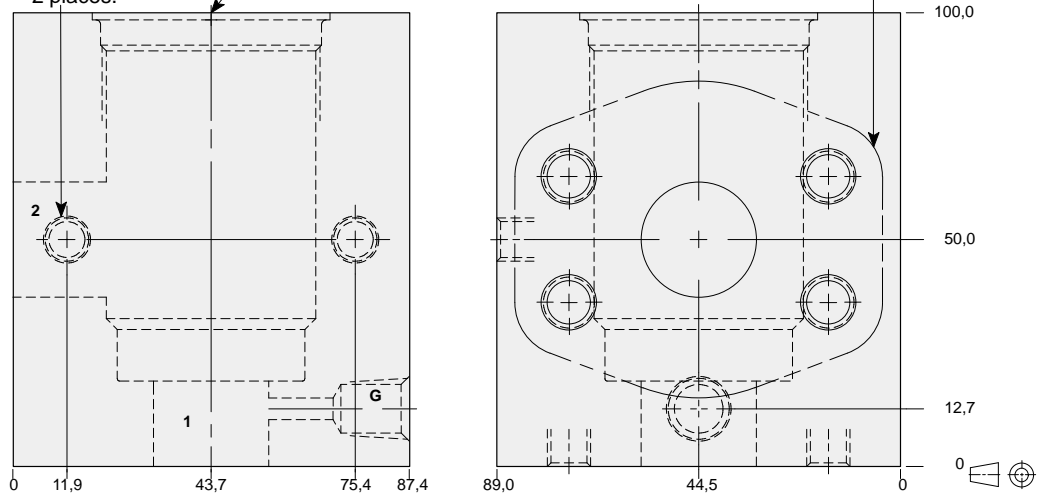


## 90 degree 1.00" SAE Code 62 flange port body with gauge port.

Mounting Holes:  
(opposite side)  
Inch: .375-16 UNC-2B  
x 15,7 mm. deep.  
Metric: M10 x 1.50-6H  
x 15,7 mm. deep.  
2 places.

T-18A Cavity  
Locating Shoulder  
Depth 1,5 mm.

1.00" SAE Code 62  
4-Bolt Flange Pattern  
2 places.



### TYPICAL CARTRIDGES USED WITH THIS BODY

RPKC - ***	Page	1.07
RPKE - ***	Page	1.09
RDJA - ***	Page	1.11
RQKB - ***	Page	1.13
RPKD - ***	Page	1.15
CXJA - ***	Page	5.09
CXID - ***	Page	5.11
NFFC - ***	Page	5.13
CNIC - ***	Page	5.15
NCGB - ***	Page	5.17
NCGC - ***	Page	5.19
FXFA - ***	Page	5.21
FCFB - ***	Page	5.23
FDFA - ***	Page	5.25
FQIA - ***	Page	10.15

Instructions for ordering complete cartridge and body assemblies. Page viii

Pressure ratings, material specifications. Page 11.02

SAE Specifications. Page 11.03

Mounting Hole Dimensions	Gauge Port	ALUMINIUM		SG IRON	
		Model Code	List Price	Model Code	List Price
Inch	.25 NPTF	LA4		LA4/S	
Metric	.25 BSPP	LA4/M		LA4/T	

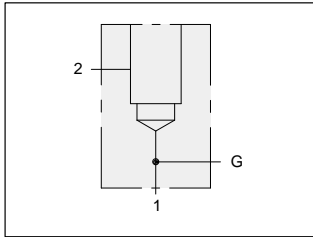
Series 4 T-18A



# LINE MOUNT BODIES



- Aluminium rated to 210 bar and SG Iron rated to 350 bar.

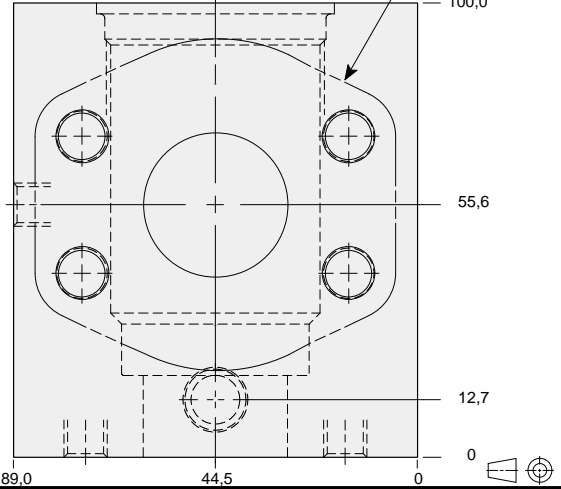
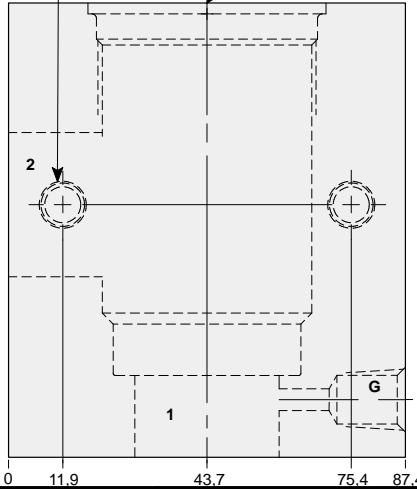


## 90 degree 1.25" SAE Code 61 flange port body with gauge port.

Mounting Holes:  
(opposite side)  
Inch: .375-16 UNC-2B  
x 19,0 mm. deep.  
Metric: M10 x 1.50-6H  
x 19,0 mm. deep.  
2 places.

T-18A Cavity  
Locating Shoulder  
Depth 2,3 mm.

1.25" SAE Code 61  
4-Bolt Flange Pattern  
2 places.

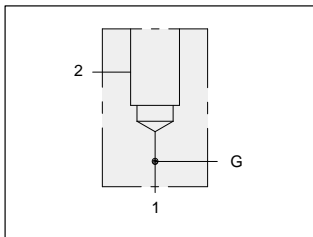


### TYPICAL CARTRIDGES USED WITH THIS BODY

RPKC - ***	Page	1.07
RPKE - ***	Page	1.09
RDJA - ***	Page	1.11
RQKB - ***	Page	1.13
RPKD - ***	Page	1.15
CXJA - ***	Page	5.09
CXID - ***	Page	5.11
NFFC - ***	Page	5.13
CNIC - ***	Page	5.15
NCGB - ***	Page	5.17
NCGC - ***	Page	5.19
FXFA - ***	Page	5.21
FCFB - ***	Page	5.23
FDFA - ***	Page	5.25
FQIA - ***	Page	10.15

Instructions for ordering complete cartridge and body assemblies.	Page	viii
Pressure ratings, material specifications.	Page	11.02
SAE Specifications.	Page	11.03

Mounting Hole Dimensions	Gauge Port	ALUMINIUM		SG IRON	
		Model Code	List Price	Model Code	List Price
Inch	.25 NPTF	LAQ		LAQ/S	
Metric	.25 BSPP	LAQ/M		LAQ/T	

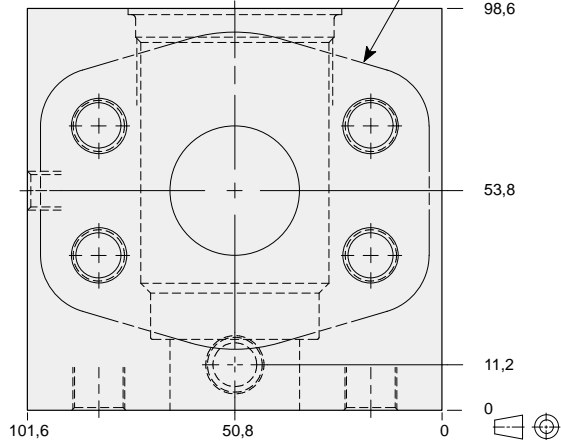
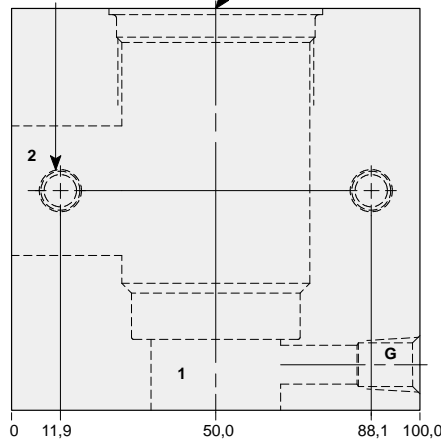


## 90 degree 1.25" SAE Code 62 flange port body with gauge port.

Mounting Holes:  
(opposite side)  
Inch: .375-16 UNC-2B  
x 19,0 mm. deep.  
Metric: M10 x 1.50-6H  
x 19,0 mm. deep.  
2 places.

T-18A Cavity  
Locating Shoulder  
Depth 1,5 mm.

1.25" SAE Code 62  
4-Bolt Flange Pattern  
2 places.



### TYPICAL CARTRIDGES USED WITH THIS BODY

RPKC - ***	Page	1.07
RPKE - ***	Page	1.09
RDJA - ***	Page	1.11
RQKB - ***	Page	1.13
RPKD - ***	Page	1.15
CXJA - ***	Page	5.09
CXID - ***	Page	5.11
NFFC - ***	Page	5.13
CNIC - ***	Page	5.15
NCGB - ***	Page	5.17
NCGC - ***	Page	5.19
FXFA - ***	Page	5.21
FCFB - ***	Page	5.23
FDFA - ***	Page	5.25
FQIA - ***	Page	10.15

Instructions for ordering complete cartridge and body assemblies.	Page	viii
Pressure ratings, material specifications.	Page	11.02
SAE Specifications.	Page	11.03

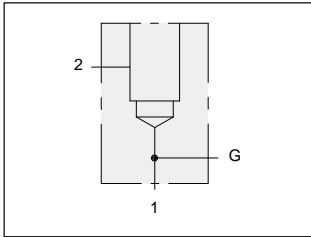
Mounting Hole Dimensions	Gauge Port	ALUMINIUM		SG IRON	
		Model Code	List Price	Model Code	List Price
Inch	.25 NPTF	LA5		LA5/S	
Metric	.25 BSPP	LA5/M		LA5/T	



# LINE MOUNT BODIES



- Aluminium rated to 210 bar and SG Iron rated to 350 bar.

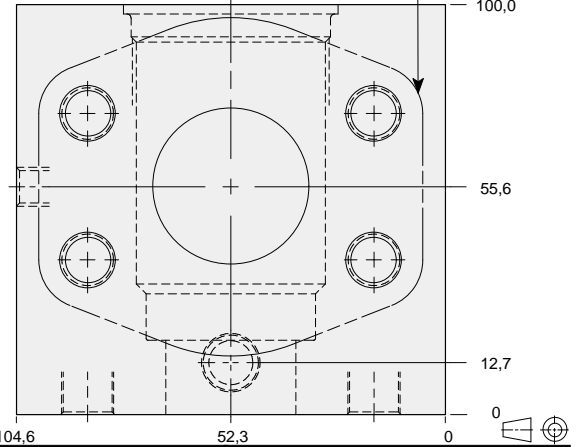
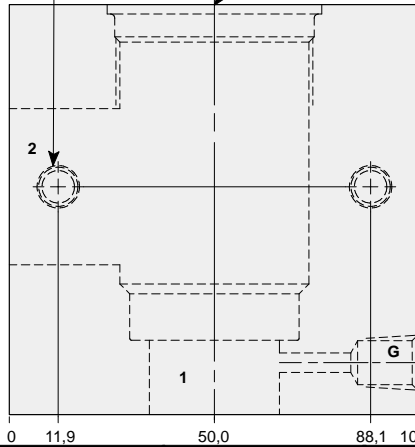


## 90 degree 1.50" SAE Code 61 flange port body with gauge port.

Mounting Holes:  
(opposite side)  
Inch: .375-16 UNC-2B  
x 19,0 mm. deep.  
Metric: M10 x 1.50-6H  
x 19,0 mm. deep.  
2 places.

T-18A Cavity  
Locating Shoulder  
Depth 2,3 mm.

1.50" SAE Code 61  
4-Bolt Flange Pattern  
2 places.



### TYPICAL CARTRIDGES USED WITH THIS BODY

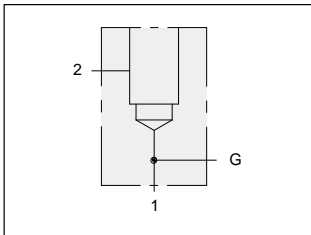
RPKC - ***	Page	1.07
RPKE - ***	Page	1.09
RDJA - ***	Page	1.11
RQKB - ***	Page	1.13
RPKD - ***	Page	1.15
CXJA - ***	Page	5.09
CXID - ***	Page	5.11
NFFC - ***	Page	5.13
CNIC - ***	Page	5.15
NCGB - ***	Page	5.17
NCGC - ***	Page	5.19
FXFA - ***	Page	5.21
FCFB - ***	Page	5.23
F DFA - ***	Page	5.25
FQIA - ***	Page	10.15

Instructions for ordering complete cartridge and body assemblies. Page viii

Pressure ratings, material specifications. Page 11.02

SAE Specifications. Page 11.03

Mounting Hole Dimensions	Gauge Port	ALUMINIUM		SG IRON	
		Model Code	List Price	Model Code	List Price
Inch	.25 NPTF	LAR		LAR/S	
Metric	.25 BSPP	LAR/M		LAR/T	

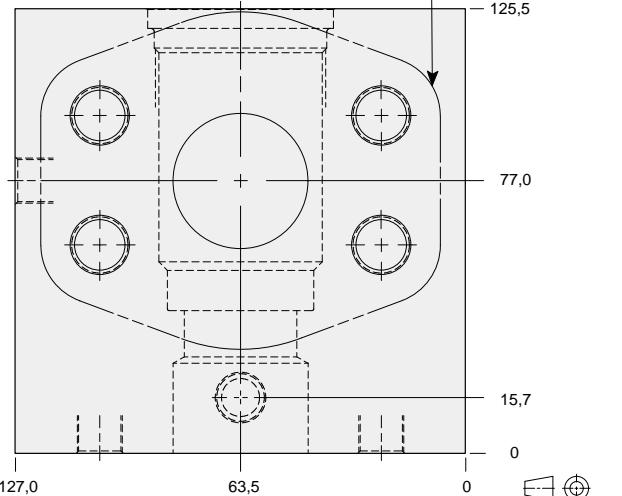
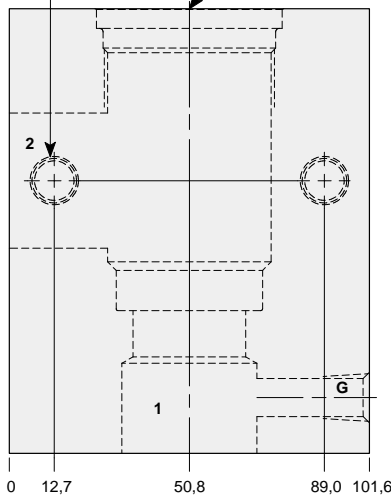


## 90 degree 1.50" SAE Code 62 flange port body with gauge port.

Mounting Holes:  
(opposite side)  
Inch: .500-13 UNC  
x 19,0 mm. deep.  
Metric: M12 x 1.25-6H  
x 19,0 mm. deep.  
2 places.

T-18A Cavity  
Locating Shoulder  
Depth 5,6 mm.

1.50" SAE Code 62  
4-Bolt Flange Pattern  
2 places.



### TYPICAL CARTRIDGES USED WITH THIS BODY

RPKC - ***	Page	1.07
RPKE - ***	Page	1.09
RDJA - ***	Page	1.11
RQKB - ***	Page	1.13
RPKD - ***	Page	1.15
CXJA - ***	Page	5.09
CXID - ***	Page	5.11
NFFC - ***	Page	5.13
CNIC - ***	Page	5.15
NCGB - ***	Page	5.17
NCGC - ***	Page	5.19
FXFA - ***	Page	5.21
FCFB - ***	Page	5.23
F DFA - ***	Page	5.25
FQIA - ***	Page	10.15

Instructions for ordering complete cartridge and body assemblies. Page viii

Pressure ratings, material specifications. Page 11.02

SAE Specifications. Page 11.03

Mounting Hole Dimensions	Gauge Port	ALUMINIUM		SG IRON	
		Model Code	List Price	Model Code	List Price
Inch	.25 NPTF	LA6		LA6/S	
Metric	.25 BSPP	LA6/M		LA6/T	

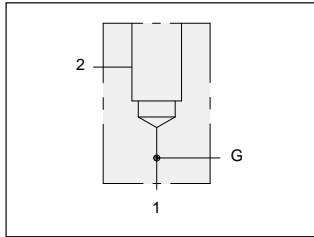
Series 4 T-18A



# LINE MOUNT BODIES



- Aluminium rated to 210 bar and SG Iron rated to 350 bar.

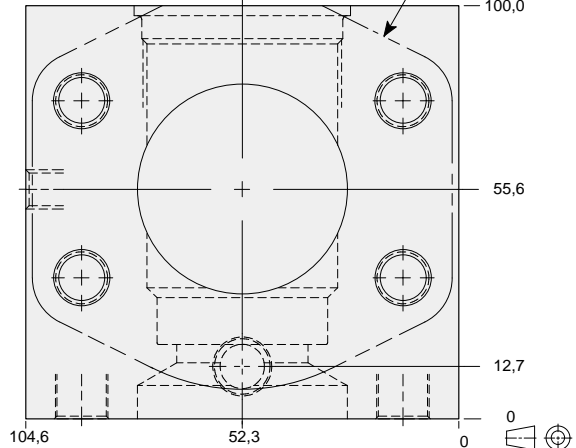
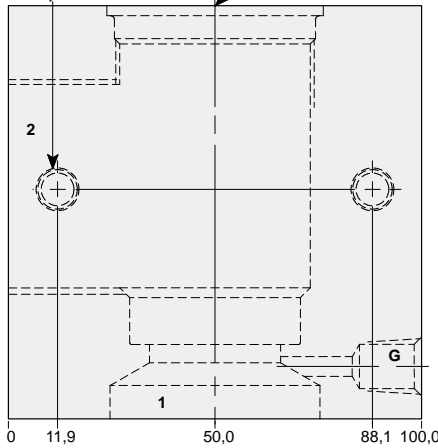


## 90 degree 2.00" SAE Code 61 flange port body with gauge port.

Mounting Holes:  
(opposite side)  
Inch: .375-16 UNC-2B  
x 19,0 mm. deep.  
Metric: M10 x 1.50-6H  
x 19,0 mm. deep.  
2 places.

T-18A Cavity  
Locating Shoulder  
Depth 2,3 mm.

2.00" SAE Code 61  
4-Bolt Flange Pattern  
2 places.

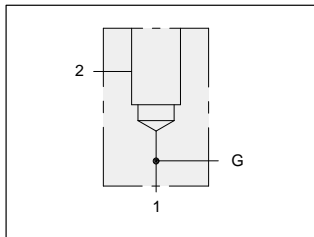


### TYPICAL CARTRIDGES USED WITH THIS BODY

RPKC - ***	Page	1.07
RPKE - ***	Page	1.09
RDJA - ***	Page	1.11
RQKB - ***	Page	1.13
RPKD - ***	Page	1.15
CXJA - ***	Page	5.09
CXID - ***	Page	5.11
NFFC - ***	Page	5.13
CNIC - ***	Page	5.15
NCGB - ***	Page	5.17
NCGC - ***	Page	5.19
FXFA - ***	Page	5.21
FCFB - ***	Page	5.23
FDFA - ***	Page	5.25
FQIA - ***	Page	10.15

Instructions for ordering complete cartridge and body assemblies.	Page	viii
Pressure ratings, material specifications.	Page	11.02
SAE Specifications.	Page	11.03

Mounting Hole Dimensions	Gauge Port	ALUMINIUM		SG IRON	
		Model Code	List Price	Model Code	List Price
Inch	.25 NPTF	LAS		LAS/S	
Metric	.25 BSPP	LAS/M		LAS/T	

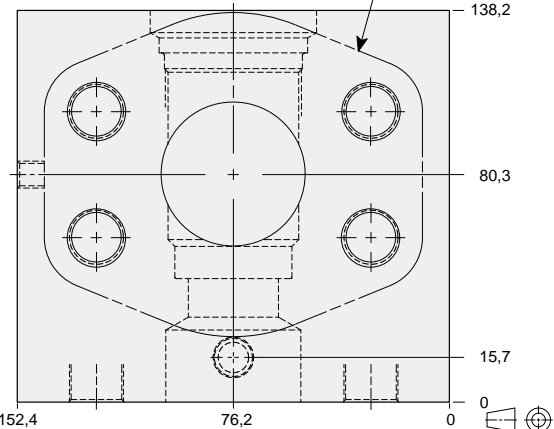
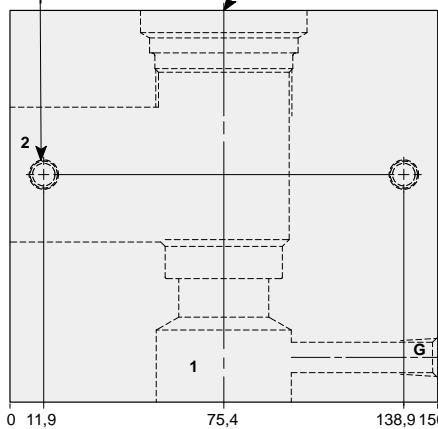


## 90 degree 2.00" SAE Code 62 flange port body with gauge port.

Mounting Holes:  
(opposite side)  
Inch: .375-16 UNC-2B  
x 19,0 mm. deep.  
Metric: M10 x 1.50-6H  
x 19,0 mm. deep.  
2 places.

T-18A Cavity  
Locating Shoulder  
Depth 15,0 mm.

2.00" SAE Code 62  
4-Bolt Flange Pattern  
2 places.



### TYPICAL CARTRIDGES USED WITH THIS BODY

RPKC - ***	Page	1.07
RPKE - ***	Page	1.09
RDJA - ***	Page	1.11
RQKB - ***	Page	1.13
RPKD - ***	Page	1.15
CXJA - ***	Page	5.09
CXID - ***	Page	5.11
NFFC - ***	Page	5.13
CNIC - ***	Page	5.15
NCGB - ***	Page	5.17
NCGC - ***	Page	5.19
FXFA - ***	Page	5.21
FCFB - ***	Page	5.23
FDFA - ***	Page	5.25
FQIA - ***	Page	10.15

Instructions for ordering complete cartridge and body assemblies.	Page	viii
Pressure ratings, material specifications.	Page	11.02
SAE Specifications.	Page	11.03

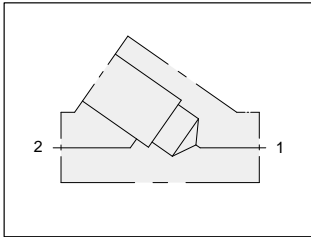
Mounting Hole Dimensions	Gauge Port	ALUMINIUM		SG IRON	
		Model Code	List Price	Model Code	List Price
Inch	.25 NPTF	LA8		LA8/S	
Metric	.25 BSPP	LA8/M		LA8/T	



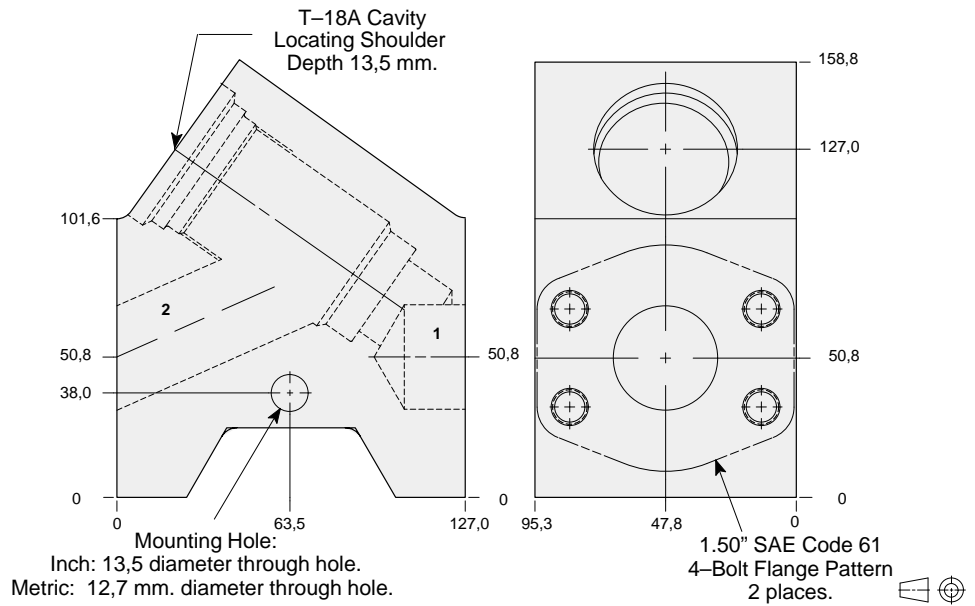
# LINE MOUNT BODIES



- Aluminium rated to 210 bar and SG Iron rated to 350 bar.



## Inline 1.50" SAE Code 61 flange port body.



### TYPICAL CARTRIDGES USED WITH THIS BODY

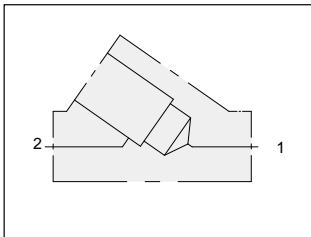
RPKC - ***	Page	1.07
RPKE - ***	Page	1.09
RDJA - ***	Page	1.11
RQKB - ***	Page	1.13
RPKD - ***	Page	1.15
CXJA - ***	Page	5.09
CXID - ***	Page	5.11
NFFC - ***	Page	5.13
CNIC - ***	Page	5.15
NCGB - ***	Page	5.17
NCGC - ***	Page	5.19
FXFA - ***	Page	5.21
FCFB - ***	Page	5.23
FDFA - ***	Page	5.25
FQIA - ***	Page	10.15

Instructions for ordering complete cartridge and body assemblies. Page viii

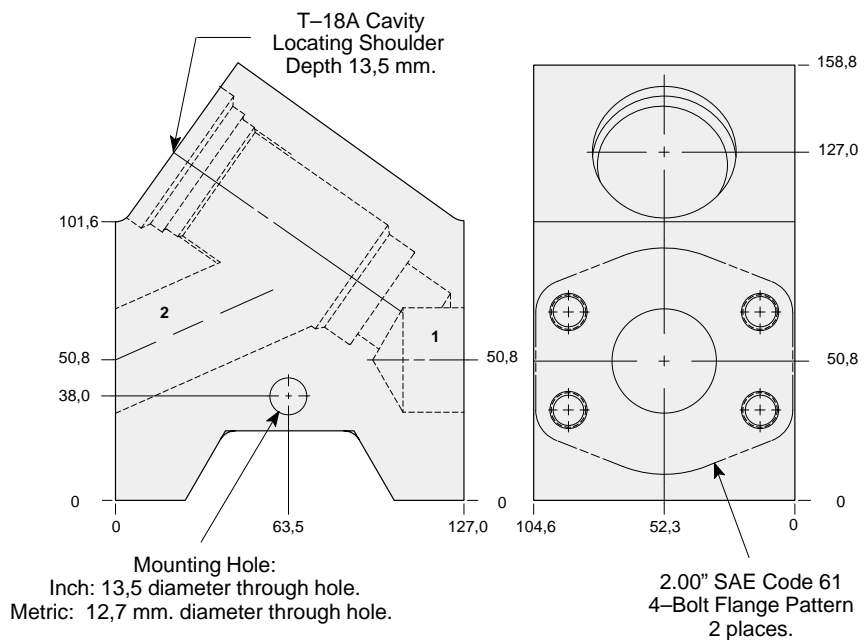
Pressure ratings, material specifications. Page 11.02

SAE Specifications. Page 11.03

Mounting Hole Dimensions	ALUMINIUM		SG IRON	
	Model Code	List Price	Model Code	List Price
Inch	ZLS		ZLS/S	
Metric	ZLS/M		ZLS/T	



## Inline 2.00" SAE Code 61 flange port body.



### TYPICAL CARTRIDGES USED WITH THIS BODY

RPKC - ***	Page	1.07
RPKE - ***	Page	1.09
RDJA - ***	Page	1.11
RQKB - ***	Page	1.13
RPKD - ***	Page	1.15
CXJA - ***	Page	5.09
CXID - ***	Page	5.11
NFFC - ***	Page	5.13
CNIC - ***	Page	5.15
NCGB - ***	Page	5.17
NCGC - ***	Page	5.19
FXFA - ***	Page	5.21
FCFB - ***	Page	5.23
FDFA - ***	Page	5.25
FQIA - ***	Page	10.15

Instructions for ordering complete cartridge and body assemblies. Page viii

Pressure ratings, material specifications. Page 11.02

SAE Specifications. Page 11.03

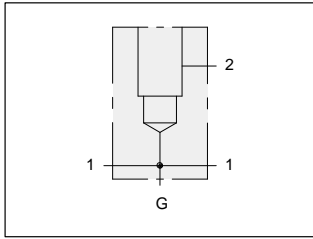
Mounting Hole Dimensions	ALUMINIUM		SG IRON	
	Model Code	List Price	Model Code	List Price
Inch	ZLR		ZLR/S	
Metric	ZLR/M		ZLR/T	



# LINE MOUNT BODIES



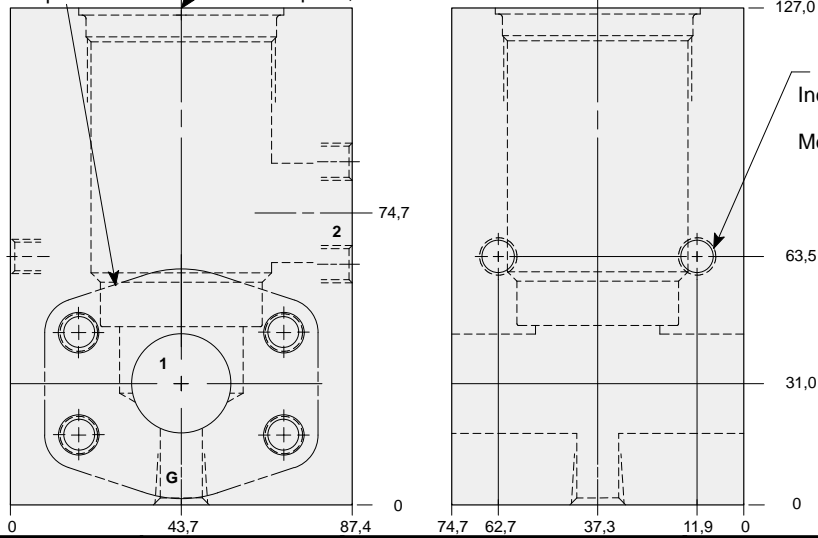
- Aluminium rated to 210 bar and SG Iron rated to 350 bar.



## Through port 1.00" SAE Code 61 flange port body with gauge port.

1.00" SAE Code 61  
4-Bolt Flange Pattern  
3 places.

T-18A Cavity  
Locating Shoulder  
Depth 1,5 mm.



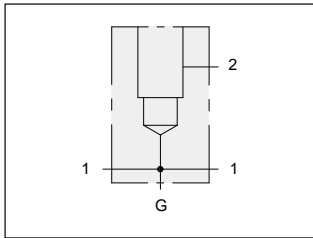
Mounting Holes:  
Inch: .375-16 UNC-2B  
x 15,7 mm. deep.  
Metric: M10 x 1.50-6H  
x 15,7 mm. deep.  
2 places.

### TYPICAL CARTRIDGES USED WITH THIS BODY

RPKC - ***	Page	1.07
RPKE - ***	Page	1.09
RDJA - ***	Page	1.11
RQKB - ***	Page	1.13
RPKD - ***	Page	1.15
NFFC - ***	Page	5.13
CNIC - ***	Page	5.15
NCGB - ***	Page	5.17
NCGC - ***	Page	5.19
FXFA - ***	Page	5.21
FCFB - ***	Page	5.23
FDFA - ***	Page	5.25

Instructions for ordering complete cartridge and body assemblies.	Page	viii
Pressure ratings, material specifications.	Page	11.02
SAE Specifications.	Page	11.03

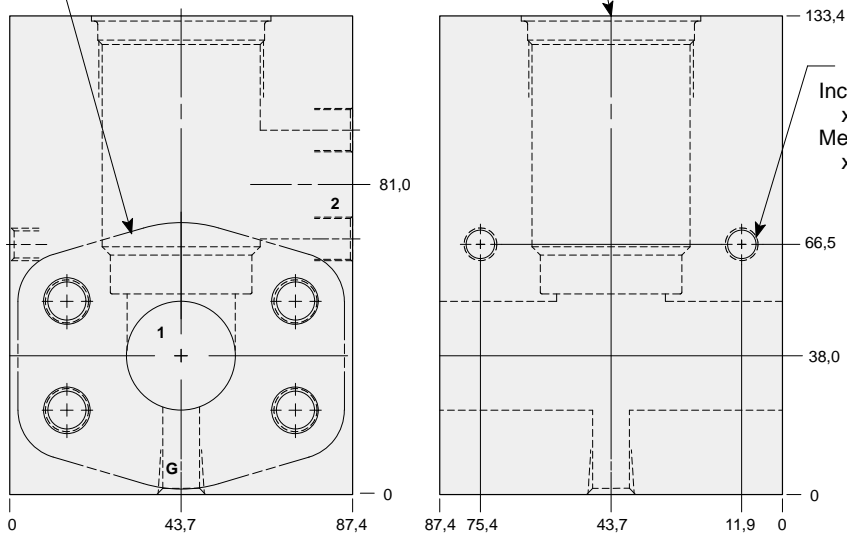
Mounting Hole Dimensions	Gauge Port	ALUMINIUM		SG IRON	
		Model Code	List Price	Model Code	List Price
Inch	.25 NPTF	LEP		LEP/S	
Metric	.25 BSPP	LEP/M		LEP/T	



## Through port 1.00" SAE Code 62 flange port body with gauge port.

1.00" SAE Code 62  
4-Bolt Flange Pattern  
3 places.

T-18A Cavity  
Locating Shoulder  
Depth 1,5 mm.



Mounting Holes:  
Inch: .375-16 UNC-2B  
x 15,7 mm. deep.  
Metric: M10 x 1.50-6H  
x 15,7 mm. deep.  
2 places.

### TYPICAL CARTRIDGES USED WITH THIS BODY

RPKC - ***	Page	1.07
RPKE - ***	Page	1.09
RDJA - ***	Page	1.11
RQKB - ***	Page	1.13
RPKD - ***	Page	1.15
NFFC - ***	Page	5.13
CNIC - ***	Page	5.15
NCGB - ***	Page	5.17
NCGC - ***	Page	5.19
FXFA - ***	Page	5.21
FCFB - ***	Page	5.23
FDFA - ***	Page	5.25

Instructions for ordering complete cartridge and body assemblies.	Page	viii
Pressure ratings, material specifications.	Page	11.02
SAE Specifications.	Page	11.03

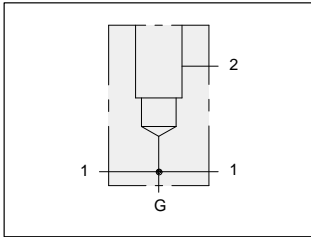
Mounting Hole Dimensions	Gauge Port	ALUMINIUM		SG IRON	
		Model Code	List Price	Model Code	List Price
Inch	.25 NPTF	LE4		LE4/S	
Metric	.25 BSPP	LE4/M		LE4/T	



# LINE MOUNT BODIES



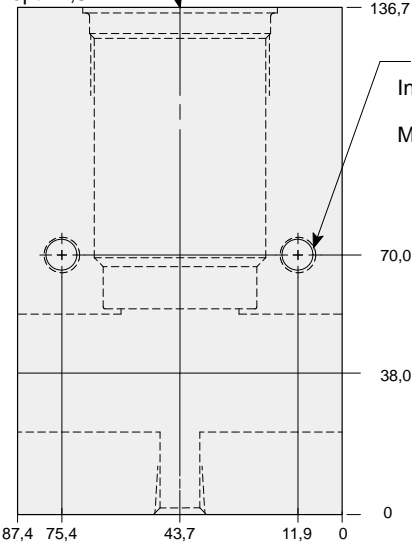
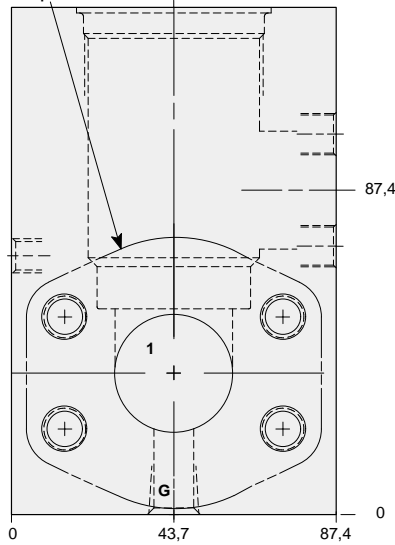
- Aluminium rated to 210 bar and SG Iron rated to 350 bar.



## Through port 1.25" SAE Code 61 flange port body with gauge port.

1.25" SAE Code 61  
4-Bolt Flange Pattern  
3 places.

T-18A Cavity  
Locating Shoulder  
Depth 1,5 mm.



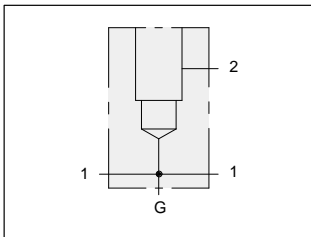
Mounting Holes:  
Inch: .375-16 UNC-2B  
x 15,7 mm. deep.  
Metric: M10 x 1.50-6H  
x 15,7 mm. deep.  
2 places.

### TYPICAL CARTRIDGES USED WITH THIS BODY

RPKC - ***	Page	1.07
RPKE - ***	Page	1.09
RDJA - ***	Page	1.11
RQKB - ***	Page	1.13
RPKD - ***	Page	1.15
NFFC - ***	Page	5.13
CNIC - ***	Page	5.15
NCGB - ***	Page	5.17
NCGC - ***	Page	5.19
FXFA - ***	Page	5.21
FCFB - ***	Page	5.23
FDFA - ***	Page	5.25

Instructions for ordering complete cartridge and body assemblies.	Page	viii
Pressure ratings, material specifications.	Page	11.02
SAE Specifications.	Page	11.03

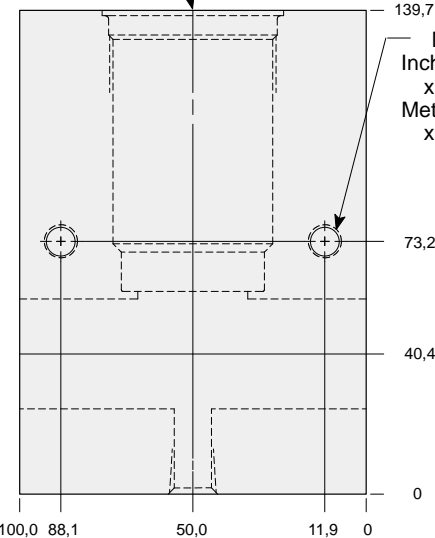
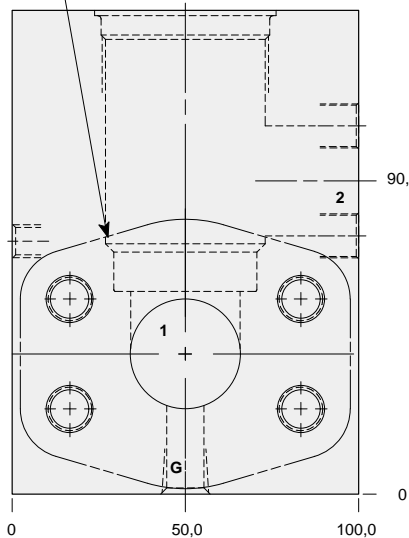
Mounting Hole Dimensions	Gauge Port	ALUMINIUM		SG IRON	
		Model Code	List Price	Model Code	List Price
Inch	.25 NPTF	LEQ		LEQ/S	
Metric	.25 BSPP	LEQ/M		LEQ/T	



## Through port 1.25" SAE Code 62 flange port body with gauge port.

1.25" SAE Code 62  
4-Bolt Flange Pattern  
3 places.

T-18A Cavity  
Locating Shoulder  
Depth 1,5 mm.



Mounting Holes:  
Inch: .375-16 UNC-2B  
x 15,7 mm. deep.  
Metric: M10 x 1.50-6H  
x 15,7 mm. deep.  
2 places.

### TYPICAL CARTRIDGES USED WITH THIS BODY

RPKC - ***	Page	1.07
RPKE - ***	Page	1.09
RDJA - ***	Page	1.11
RQKB - ***	Page	1.13
RPKD - ***	Page	1.15
NFFC - ***	Page	5.13
CNIC - ***	Page	5.15
NCGB - ***	Page	5.17
NCGC - ***	Page	5.19
FXFA - ***	Page	5.21
FCFB - ***	Page	5.23
FDFA - ***	Page	5.25

Instructions for ordering complete cartridge and body assemblies.	Page	viii
Pressure ratings, material specifications.	Page	11.02
SAE Specifications.	Page	11.03

Mounting Hole Dimensions	Gauge Port	ALUMINIUM		SG IRON	
		Model Code	List Price	Model Code	List Price
Inch	.25 NPTF	LE5		LE5/S	
Metric	.25 BSPP	LE5/M		LE5/T	

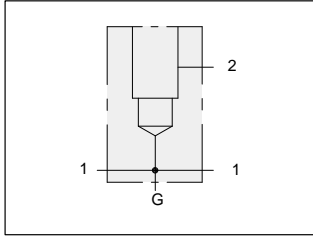




# LINE MOUNT BODIES



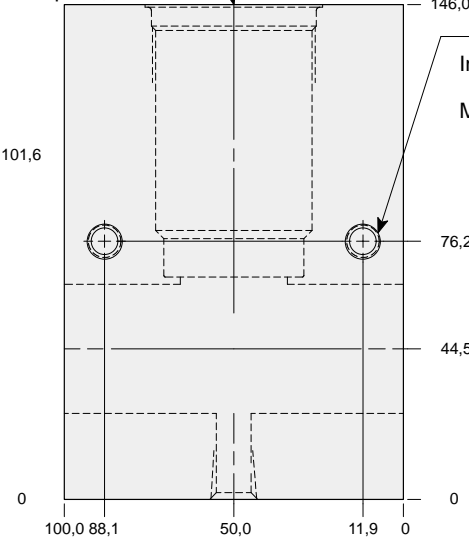
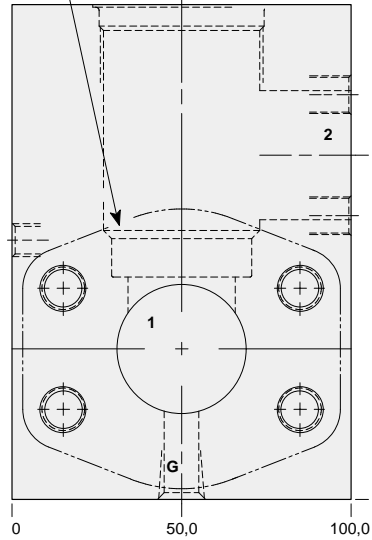
- Aluminium rated to 210 bar and SG Iron rated to 350 bar.



## Through port 1.50" SAE Code 61 flange port body with gauge port.

1.50" SAE Code 61  
4-Bolt Flange Pattern  
3 places.

T-18A Cavity  
Locating Shoulder  
Depth 0,8 mm.



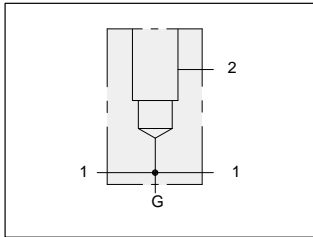
Mounting Holes:  
Inch: .375-16 UNC-2B  
x 15,7 mm. deep.  
Metric: M10 x 1.50-6H  
x 15,7 mm. deep.  
2 places.

### TYPICAL CARTRIDGES USED WITH THIS BODY

RPKC - ***	Page	1.07
RPKE - ***	Page	1.09
RDJA - ***	Page	1.11
RQKB - ***	Page	1.13
RPKD - ***	Page	1.15
NFFC - ***	Page	5.13
CNIC - ***	Page	5.15
NCGB - ***	Page	5.17
NCGC - ***	Page	5.19
FXFA - ***	Page	5.21
FCFB - ***	Page	5.23
FDFA - ***	Page	5.25

Instructions for ordering complete cartridge and body assemblies.	Page	viii
Pressure ratings, material specifications.	Page	11.02
SAE Specifications.	Page	11.03

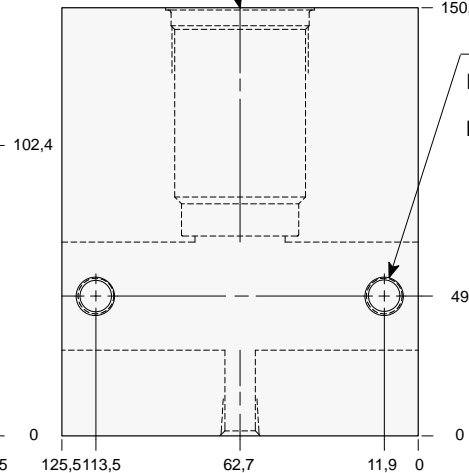
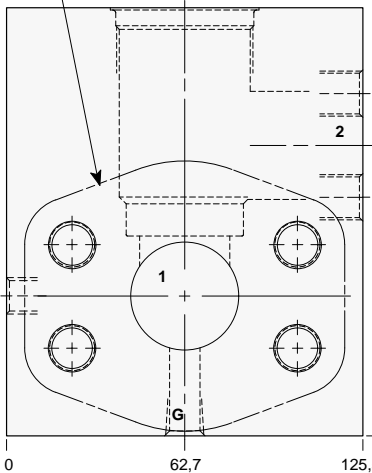
Mounting Hole Dimensions	Gauge Port	ALUMINIUM		SG IRON	
		Model Code	List Price	Model Code	List Price
Inch	.25 NPTF	LER		LER/S	
Metric	.25 BSPP	LER/M		LER/T	



## Through port 1.50" SAE Code 62 flange port body with gauge port.

1.50" SAE Code 62  
4-Bolt Flange Pattern  
3 places.

T-18A Cavity  
Locating Shoulder  
Depth 0,8 mm.



Mounting Holes:  
Inch: .500-13 UNC-2B  
x 19,0 mm. deep.  
Metric: M12 x 1.75-6H  
x 19,0 mm. deep.  
2 places.

### TYPICAL CARTRIDGES USED WITH THIS BODY

RPKC - ***	Page	1.07
RPKE - ***	Page	1.09
RDJA - ***	Page	1.11
RQKB - ***	Page	1.13
RPKD - ***	Page	1.15
NFFC - ***	Page	5.13
CNIC - ***	Page	5.15
NCGB - ***	Page	5.17
NCGC - ***	Page	5.19
FXFA - ***	Page	5.21
FCFB - ***	Page	5.23
FDFA - ***	Page	5.25

Instructions for ordering complete cartridge and body assemblies.	Page	viii
Pressure ratings, material specifications.	Page	11.02
SAE Specifications.	Page	11.03

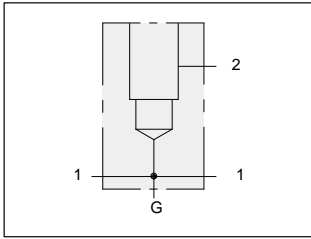
Mounting Hole Dimensions	Gauge Port	ALUMINIUM		SG IRON	
		Model Code	List Price	Model Code	List Price
Inch	.25 NPTF	LE6		LE6/S	
Metric	.25 BSPP	LE6/M		LE6/T	



# LINE MOUNT BODIES



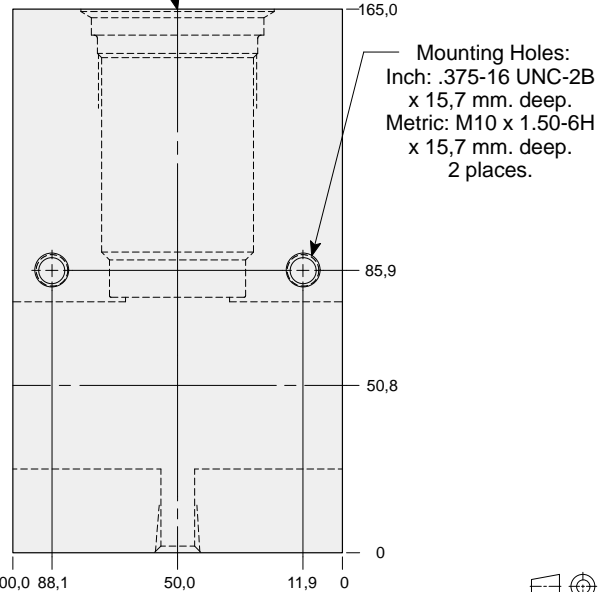
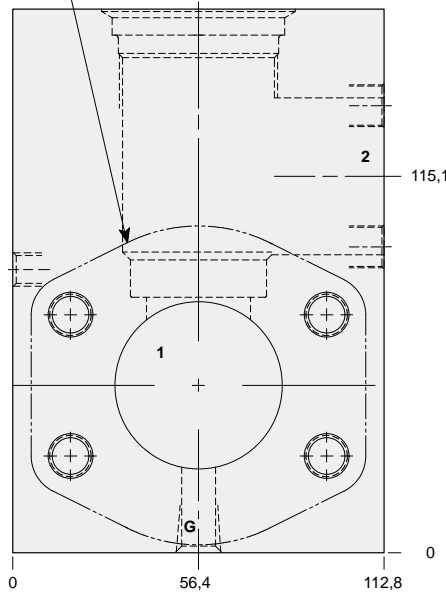
- Aluminium rated to 210 bar and SG Iron rated to 350 bar.



## Through port 2.00" SAE Code 61 flange port body with gauge port.

2.00" SAE Code 61  
4-Bolt Flange Pattern  
3 places.

T-18A Cavity  
Locating Shoulder  
Depth 7,9 mm.



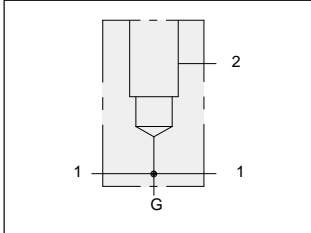
Mounting Holes:  
Inch: .375-16 UNC-2B  
x 15,7 mm. deep.  
Metric: M10 x 1.50-6H  
x 15,7 mm. deep.  
2 places.

### TYPICAL CARTRIDGES USED WITH THIS BODY

RPKC - ***	Page	1.07
RPKE - ***	Page	1.09
RDJA - ***	Page	1.11
RQKB - ***	Page	1.13
RPKD - ***	Page	1.15
NFFC - ***	Page	5.13
CNIC - ***	Page	5.15
NCGB - ***	Page	5.17
NCGC - ***	Page	5.19
FXFA - ***	Page	5.21
FCFB - ***	Page	5.23
FDFA - ***	Page	5.25

Instructions for ordering complete cartridge and body assemblies.	Page	viii
Pressure ratings, material specifications.	Page	11.02
SAE Specifications.	Page	11.03

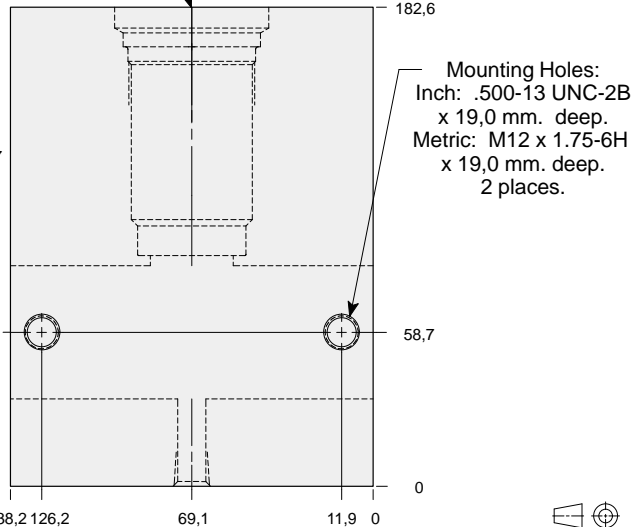
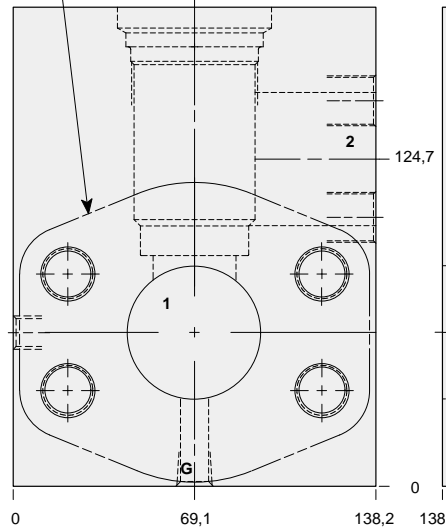
Mounting Hole Dimensions	Gauge Port	ALUMINIUM		SG IRON	
		Model Code	List Price	Model Code	List Price
Inch	.25 NPTF	LES		LES/S	
Metric	.25 BSPP	LES/M		LES/T	



## Through port 2.00" SAE Code 62 flange port body with gauge port.

2.00" SAE Code 62  
4-Bolt Flange Pattern  
3 places.

T-18A Cavity  
Locating Shoulder  
Depth 15 mm.



Mounting Holes:  
Inch: .500-13 UNC-2B  
x 19,0 mm. deep.  
Metric: M12 x 1.75-6H  
x 19,0 mm. deep.  
2 places.

### TYPICAL CARTRIDGES USED WITH THIS BODY

RPKC - ***	Page	1.07
RPKE - ***	Page	1.09
RDJA - ***	Page	1.11
RQKB - ***	Page	1.13
RPKD - ***	Page	1.15
NFFC - ***	Page	5.13
CNIC - ***	Page	5.15
NCGB - ***	Page	5.17
NCGC - ***	Page	5.19
FXFA - ***	Page	5.21
FCFB - ***	Page	5.23
FDFA - ***	Page	5.25

Instructions for ordering complete cartridge and body assemblies.	Page	viii
Pressure ratings, material specifications.	Page	11.02
SAE Specifications.	Page	11.03

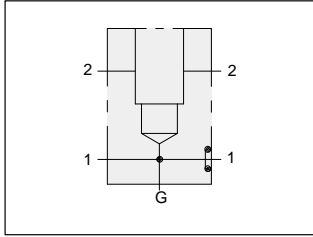
Mounting Hole Dimensions	Gauge Port	ALUMINIUM		SG IRON	
		Model Code	List Price	Model Code	List Price
Inch	.25 NPTF	LE8		LE8/S	
Metric	.25 BSPP	LE8/M		LE8/T	



# LINE MOUNT BODIES



- Aluminium rated to 210 bar and SG Iron rated to 350 bar.

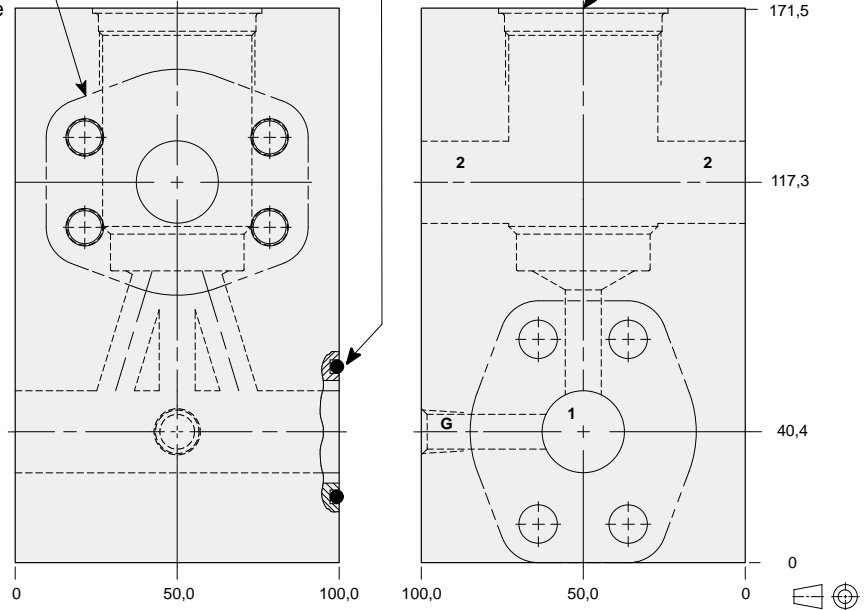


## Sandwich mount through flange port 1.00" SAE Code 62 body with gauge port.

1.00" SAE Code 62  
4-Bolt Flange Pattern  
3 places.  
Port 1 through hole  
Port 2 tapped hole

-219 O-ring

T-18A Cavity  
Locating Shoulder  
Depth 1,5 mm.



### TYPICAL CARTRIDGES USED WITH THIS BODY

RPKC - ***	Page	1.07
RPKE - ***	Page	1.09
RDJA - ***	Page	1.11
RQKB - ***	Page	1.13
RPKD - ***	Page	1.15

Cartridge seal type determines O-ring type.

Instructions for ordering complete cartridge and body assemblies. Page viii

Pressure ratings, material specifications. Page 11.02

SAE Specifications. Page 11.03

Mounting Hole Dimensions	Gauge Port	ALUMINIUM		SG IRON	
		Model Code	List Price	Model Code	List Price
Inch	.25 NPTF	<b>WJM</b>		<b>WJM/S</b>	
Metric	.25 BSPP	<b>WJM/M</b>		<b>WJM/T</b>	

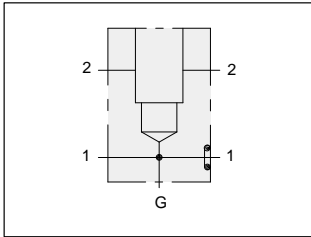
Series 4 T-18A



# LINE MOUNT BODIES



- Aluminium rated to 210 bar and SG Iron rated to 350 bar.

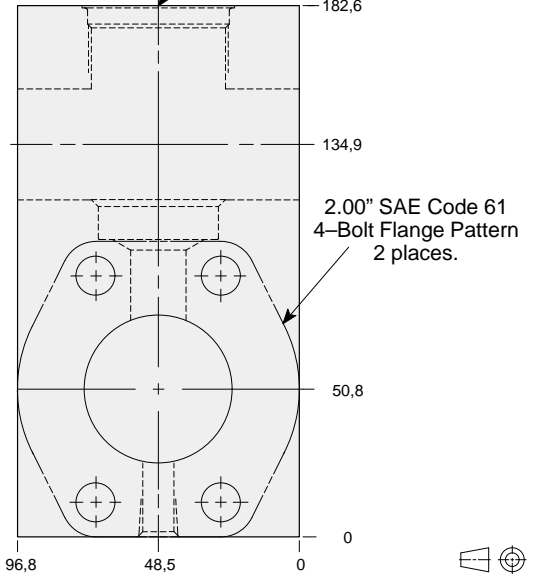
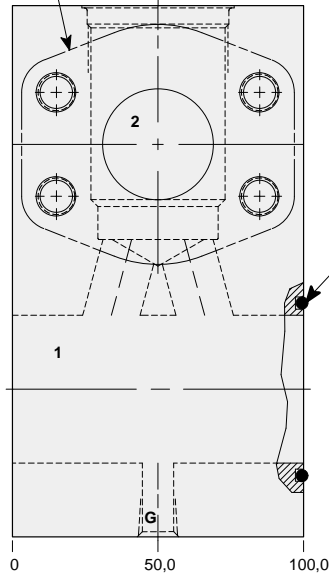


## Sandwich mount through flange port 2.00" SAE Code 61 body with gauge port.

1.50" SAE Code 61  
4-Bolt Flange Pattern  
2 places.

-228 O-ring

T-18A Cavity  
Locating Shoulder  
Depth 0,8 mm.



### TYPICAL CARTRIDGES USED WITH THIS BODY

- RPKC - \*\*\* Page 1.07
- RPKE - \*\*\* Page 1.09
- RDJA - \*\*\* Page 1.11
- RQKB - \*\*\* Page 1.13
- RPKD - \*\*\* Page 1.15

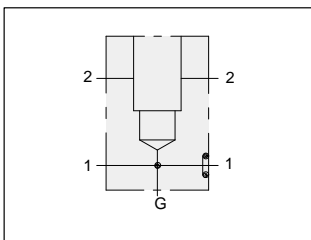
Cartridge seal type determines O-ring type.

Instructions for ordering complete cartridge and body assemblies. Page viii

Pressure ratings, material specifications. Page 11.02

SAE Specifications. Page 11.03

Mounting Hole Dimensions	Port 2 SAE Code 61	Gauge Port	ALUMINIUM		SG IRON	
			Model Code	List Price	Model Code	List Price
Inch	1.50"	.25 NPTF	ZBF		ZBF/S	
Metric	1.50"	.25 BSPP	ZBF/M		ZBF/T	

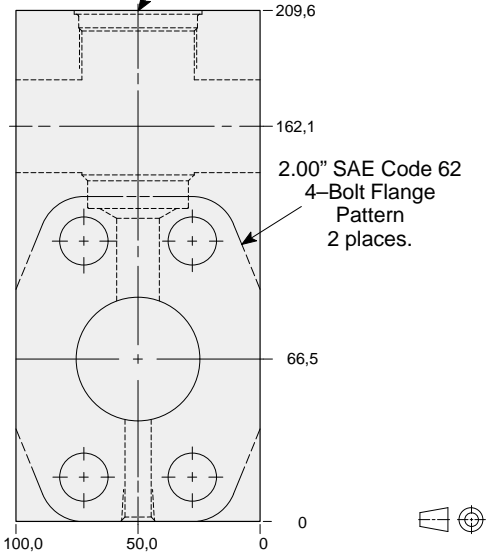
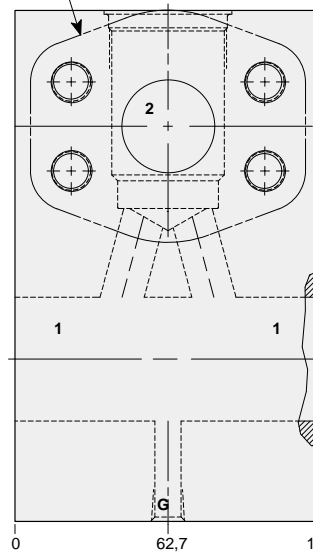


## Sandwich mount through flange port 2.00" SAE Code 62 body with gauge port.

1.50" SAE Code 62  
4-Bolt Flange Pattern  
2 places.

-228 O-ring

T-18A Cavity  
Locating Shoulder  
Depth 1,5 mm.



### TYPICAL CARTRIDGES USED WITH THIS BODY

- RPKC - \*\*\* Page 1.07
- RPKE - \*\*\* Page 1.09
- RDJA - \*\*\* Page 1.11
- RQKB - \*\*\* Page 1.13
- RPKD - \*\*\* Page 1.15

Cartridge seal type determines O-ring type.

Instructions for ordering complete cartridge and body assemblies. Page viii

Pressure ratings, material specifications. Page 11.02

SAE Specifications. Page 11.03

Mounting Hole Dimensions	Port 2 SAE Code 62	Gauge Port	ALUMINIUM		SG IRON	
			Model Code	List Price	Model Code	List Price
Inch	1.50"	.25 NPTF	ZBH		ZBH/S	
Metric	1.50"	.25 BSPP	ZBH/M		ZBH/T	

Series 4 T-18A

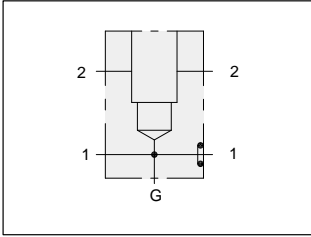


# LINE MOUNT BODIES



- Aluminium rated to 210 bar and SG Iron rated to 350 bar.

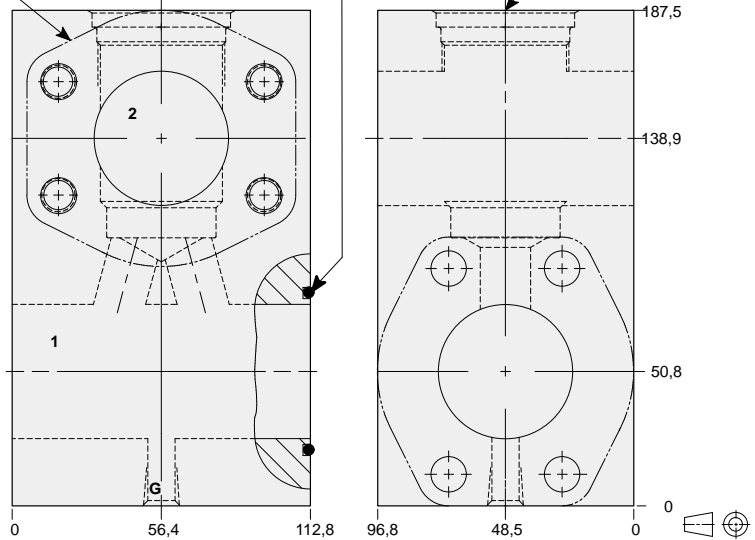
## Sandwich mount through flange port 2.00" SAE Code 61 body with gauge port.



2.00" SAE Code 61  
4-Bolt Flange Pattern  
4 places.  
Port 1 through hole  
Port 2 tapped hole

-228 O-ring

T-18A Cavity  
Locating Shoulder  
Depth 6,4 mm.



### TYPICAL CARTRIDGES USED WITH THIS BODY

RPKC - ***	Page	1.07
RPKE - ***	Page	1.09
RDJA - ***	Page	1.11
RQKB - ***	Page	1.13
RPKD - ***	Page	1.15

Cartridge seal type determines O-ring type.

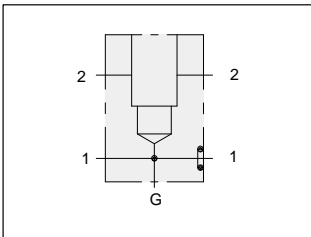
Instructions for ordering complete cartridge and body assemblies. Page viii

Pressure ratings, material specifications. Page 11.02

SAE Specifications. Page 11.03

Mounting Hole Dimensions	Gauge Port	ALUMINIUM		SG IRON	
		Model Code	List Price	Model Code	List Price
Inch	.25 NPTF	ZBE		ZBE/S	
Metric	.25 BSPP	ZBE/M		ZBE/T	

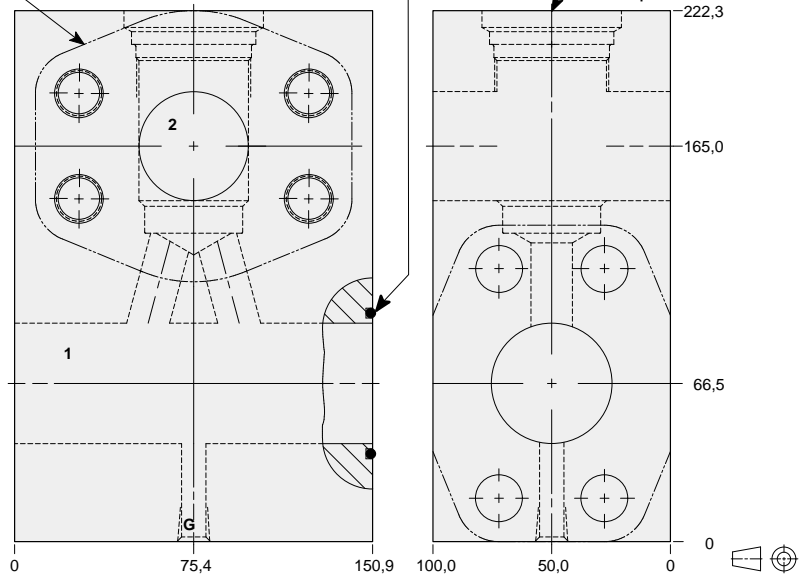
## Sandwich mount through flange port 2.00" SAE Code 62 body with gauge port.



2.00" SAE Code 62  
4-Bolt Flange Pattern  
4 places.  
Port 1 through hole  
Port 2 tapped hole

-228 O-ring

T-18A Cavity  
Locating Shoulder  
Depth 14,2 mm.



### TYPICAL CARTRIDGES USED WITH THIS BODY

RPKC - ***	Page	1.07
RPKE - ***	Page	1.09
RDJA - ***	Page	1.11
RQKB - ***	Page	1.13
RPKD - ***	Page	1.15

Cartridge seal type determines O-ring type.

Instructions for ordering complete cartridge and body assemblies. Page viii

Pressure ratings, material specifications. Page 11.02

SAE Specifications. Page 11.03

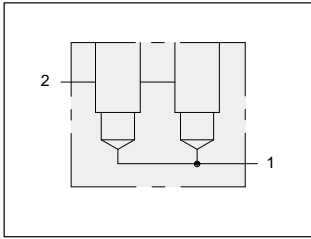
Mounting Hole Dimensions	Gauge Port	ALUMINIUM		SG IRON	
		Model Code	List Price	Model Code	List Price
Inch	.25 NPTF	ZBG		ZBG/S	
Metric	.25 BSPP	ZBG/M		ZBG/T	



# LINE MOUNT BODIES



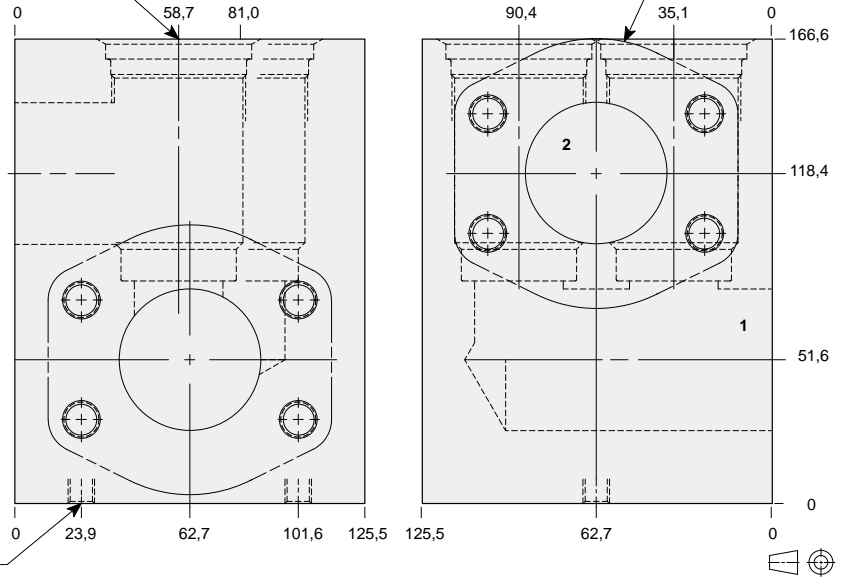
- Aluminium rated to 210 bar and SG Iron rated to 350 bar.



## Two cavity 2.00" SAE Code 61 flange port high capacity body.

T-18A Cavities  
Locating Shoulder  
Depth 7,1 mm.  
2 places

2.00" SAE Code 61  
4-Bolt Flange Pattern  
2 places.



Mounting Holes:  
Inch: .375-16 UNC-2B  
x 15,7 mm. deep.  
Metric: M10 x 1.50-6H  
x 15,7 mm. deep.  
2 places.

### TYPICAL CARTRIDGES USED WITH THIS BODY

RPKC - ***	Page	1.07
RPKE - ***	Page	1.09
RDJA - ***	Page	1.11
RQKB - ***	Page	1.13
RPKD - ***	Page	1.15

Instructions for ordering complete cartridge and body assemblies. Page viii

Pressure ratings, material specifications. Page 11.02

SAE Specifications. Page 11.03

Mounting Hole Dimensions	ALUMINIUM		SG IRON	
	Model Code	List Price	Model Code	List Price
Inch	<b>XZY</b>		<b>XZY/S</b>	
Metric	<b>XZY/M</b>		<b>XZY/T</b>	

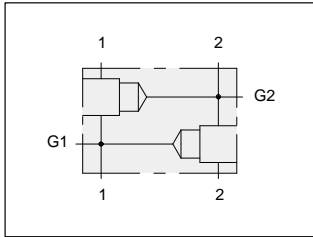
Series 4 T-18A



# LINE MOUNT BODIES



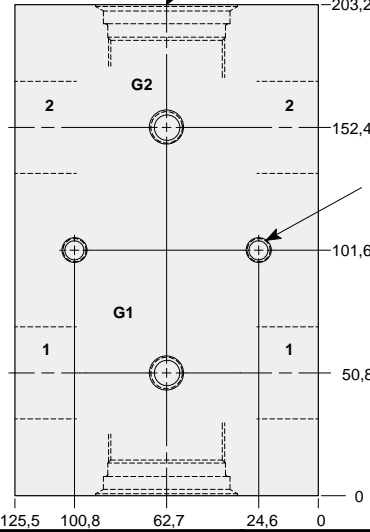
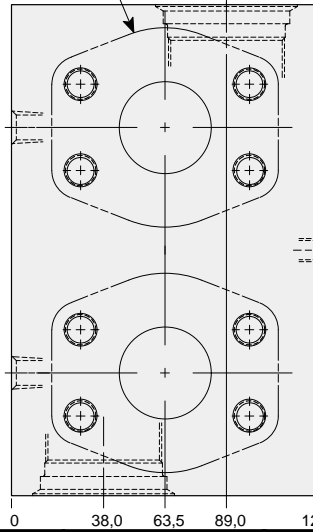
- Aluminium rated to 210 bar and SG Iron rated to 350 bar.



## Two cavity 1.50" SAE Code 61 flange port body with gauge ports for cross-port relief applications.

1.50" SAE Code 61  
4-Bolt Flange Pattern  
4 places.

T-18A Cavity  
Locating Shoulder  
Depth 7,9 mm.  
Both Ends



Mounting Holes:  
(opposite side)  
Inch: .375-16 UNC-2B  
x 15,7 mm. deep.  
Metric: M10 x 1.50-6H  
x 15,7 mm. deep.  
2 places.

### TYPICAL CARTRIDGES USED WITH THIS BODY

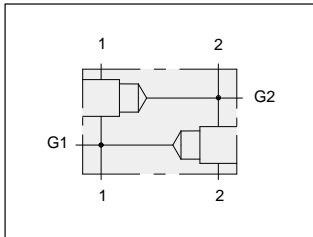
- RPKC - \*\*\* Page 1.07
- RPKE - \*\*\* Page 1.09
- RDJA - \*\*\* Page 1.11
- RQKB - \*\*\* Page 1.13

Instructions for ordering complete cartridge and body assemblies. Page viii

Pressure ratings, material specifications. Page 11.02

SAE Specifications. Page 11.03

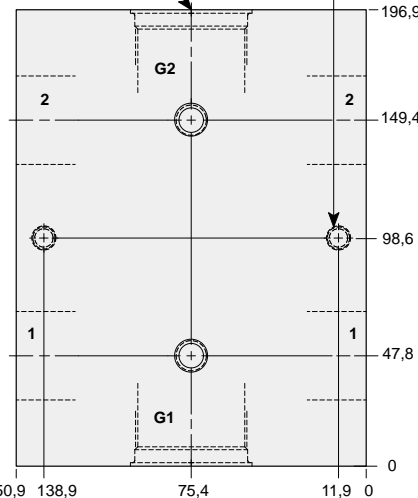
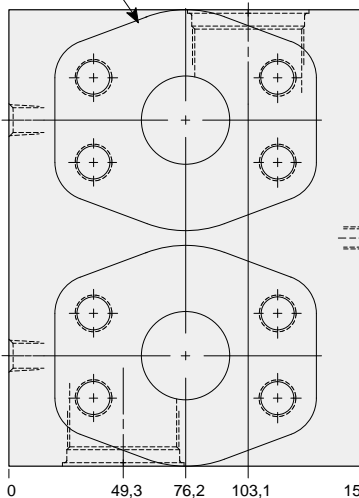
Mounting Hole Dimensions	Gauge Port	ALUMINIUM		SG IRON	
		Model Code	List Price	Model Code	List Price
Inch	.25 NPTF	YLR		YLR/S	
Metric	.25 BSPP	YLR/M		YLR/T	



## Two cavity 1.50" SAE Code 62 flange port body with gauge ports or cross-port relief applications.

1.50" SAE Code 62  
4-Bolt Flange Pattern  
4 places.

T-18A Cavity  
Locating Shoulder  
Depth 1,5 mm.  
Both Ends



Mounting Holes:  
(opposite side)  
Inch: .375-16 UNC-2B  
x 15,7 mm. deep.  
Metric: M10 x 1.50-6H  
x 15,7 mm. deep.  
2 places.

### TYPICAL CARTRIDGES USED WITH THIS BODY

- RPKC - \*\*\* Page 1.07
- RPKE - \*\*\* Page 1.09
- RDJA - \*\*\* Page 1.11
- RQKB - \*\*\* Page 1.13

Instructions for ordering complete cartridge and body assemblies. Page viii

Pressure ratings, material specifications. Page 11.02

SAE Specifications. Page 11.03

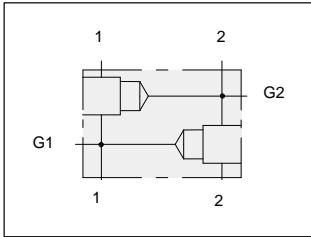
Mounting Hole Dimensions	Gauge Port	ALUMINIUM		SG IRON	
		Model Code	List Price	Model Code	List Price
Inch	.25 NPTF	YL6		YL6/S	
Metric	.25 BSPP	YL6/M		YL6/T	



# LINE MOUNT BODIES



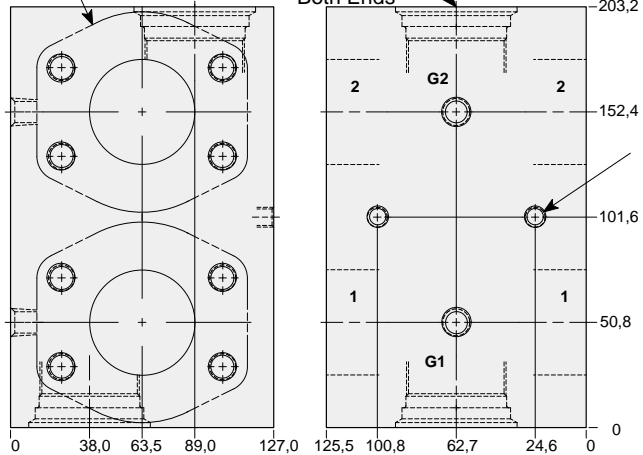
- Aluminium rated to 210 bar and SG Iron rated to 350 bar.



## Two cavity 2.00" SAE Code 61 flange port body with gauge ports for cross-port relief applications.

2.00" SAE Code 61  
4-Bolt Flange Pattern  
4 places.

T-18A Cavity  
Locating Shoulder  
Depth 9,7 mm.  
Both Ends



Mounting Holes:  
(opposite side)  
Inch: .375-16 UNC-2B  
x 15,7 mm. deep.  
Metric: M10 x 1.50-6H  
x 15,7 mm. deep.  
2 places.

### TYPICAL CARTRIDGES USED WITH THIS BODY

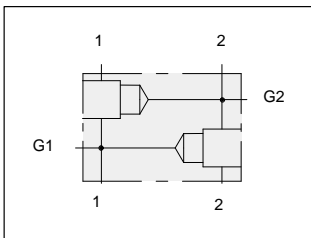
- RPKC - \*\*\* Page 1.07
- RPKE - \*\*\* Page 1.09
- RDJA - \*\*\* Page 1.11
- RQKB - \*\*\* Page 1.13

Instructions for ordering  
complete cartridge and body  
assemblies. Page viii

Pressure ratings, material  
specifications. Page 11.02

SAE Specifications. Page 11.03

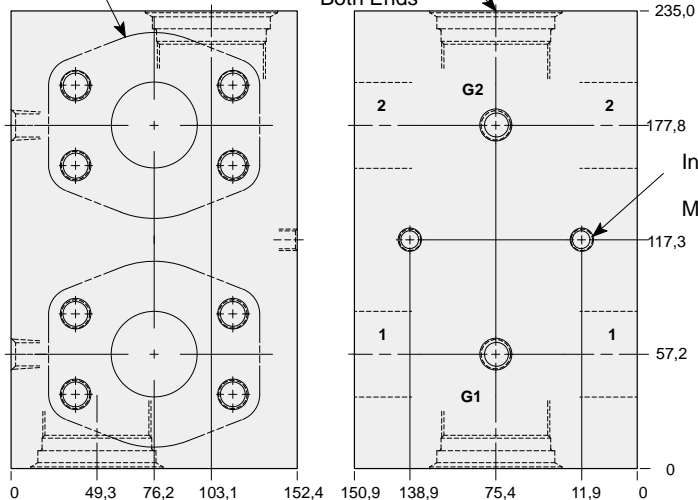
Mounting Hole Dimensions	Gauge Port	ALUMINIUM		SG IRON	
		Model Code	List Price	Model Code	List Price
Inch	.25 NPTF	YLS		YLS/S	
Metric	.25 BSPP	YLS/M		YLS/T	



## Two cavity 2.00" SAE Code 62 flange port body with gauge ports for cross-port relief applications.

2.00" SAE Code 62  
4-Bolt Flange Pattern  
4 places.

T-18A Cavity  
Locating Shoulder  
Depth 16,8 mm.  
Both Ends



Mounting Holes:  
(opposite side)  
Inch: .375-16 UNC-2B  
x 15,7 mm. deep.  
Metric: M10 x 1.50-6H  
x 15,7 mm. deep.  
2 places.

### TYPICAL CARTRIDGES USED WITH THIS BODY

- RPKC - \*\*\* Page 1.07
- RPKE - \*\*\* Page 1.09
- RDJA - \*\*\* Page 1.11
- RQKB - \*\*\* Page 1.13

Instructions for ordering  
complete cartridge and body  
assemblies. Page viii

Pressure ratings, material  
specifications. Page 11.02

SAE Specifications. Page 11.03

Mounting Hole Dimensions	Gauge Port	ALUMINIUM		SG IRON	
		Model Code	List Price	Model Code	List Price
Inch	.25 NPTF	YL8		YL8/S	
Metric	.25 BSPP	YL8/M		YL8/T	

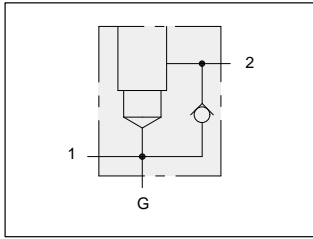




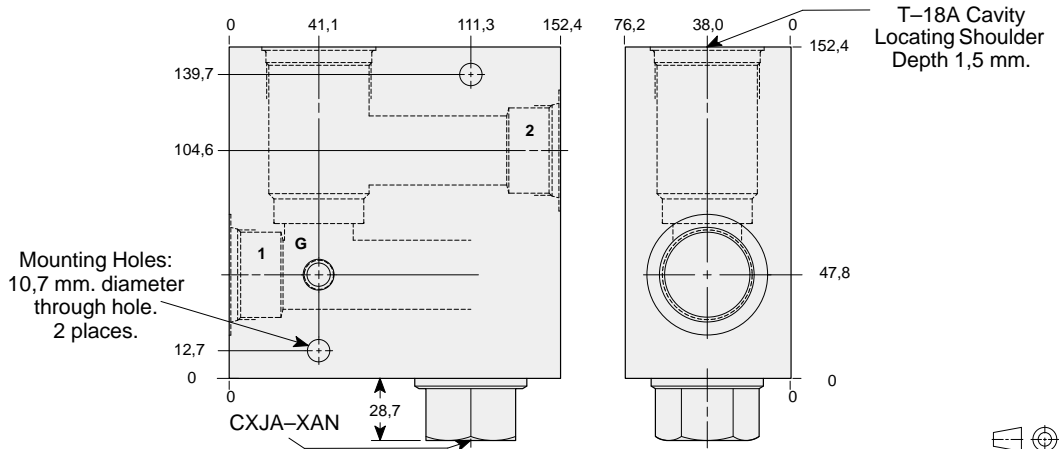
# LINE MOUNT BODIES



- Aluminium rated to 210 bar and SG Iron rated to 350 bar.



## Body with reverse free flow check.



### TYPICAL CARTRIDGES USED WITH THIS BODY

RPKC - ***	Page	1.07
RPKE - ***	Page	1.09
RDJA - ***	Page	1.11
RQKB - ***	Page	1.13
RPKD - ***	Page	1.15

Cartridge seal type determines check valve seal type.

Instructions for ordering complete cartridge and body assemblies. Page viii

Pressure ratings, material specifications. Page 11.02

Mounting Hole Dimensions	Ports 1 & 2	Gauge Port	ALUMINIUM		SG IRON	
			Model Code	List Price	Model Code	List Price
Inch	.75 NPTF	.25 NPTF	LND		LND/S	
Inch	1.00 NPTF	.25 NPTF	LNE		LNE/S	
Inch	1.25 NPTF	.25 NPTF	LNF		LNF/S	
Inch	SAE-12	.25 NPTF	LNL		LNL/S	
Inch	SAE-16	.25 NPTF	LNM		LNM/S	
Inch	SAE-20	.25 NPTF	LNN		LNN/S	
Metric	.75 BSPP	.25 BSPP	LNW		LNW/S	
Metric	1.00 BSPP	.25 BSPP	LNX		LNX/S	
Metric	1.25 BSPP	.25 BSPP	LNY		LNY/S	

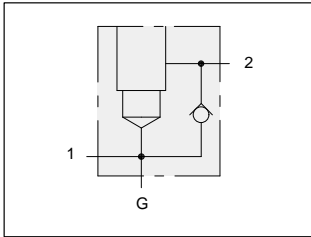
Series 4 T-18A



# LINE MOUNT BODIES



- Aluminium rated to 210 bar and SG Iron rated to 350 bar.



## 1.25" SAE Code 61 flange port body with reverse free flow check for relief applications.

### TYPICAL CARTRIDGES USED WITH THIS BODY

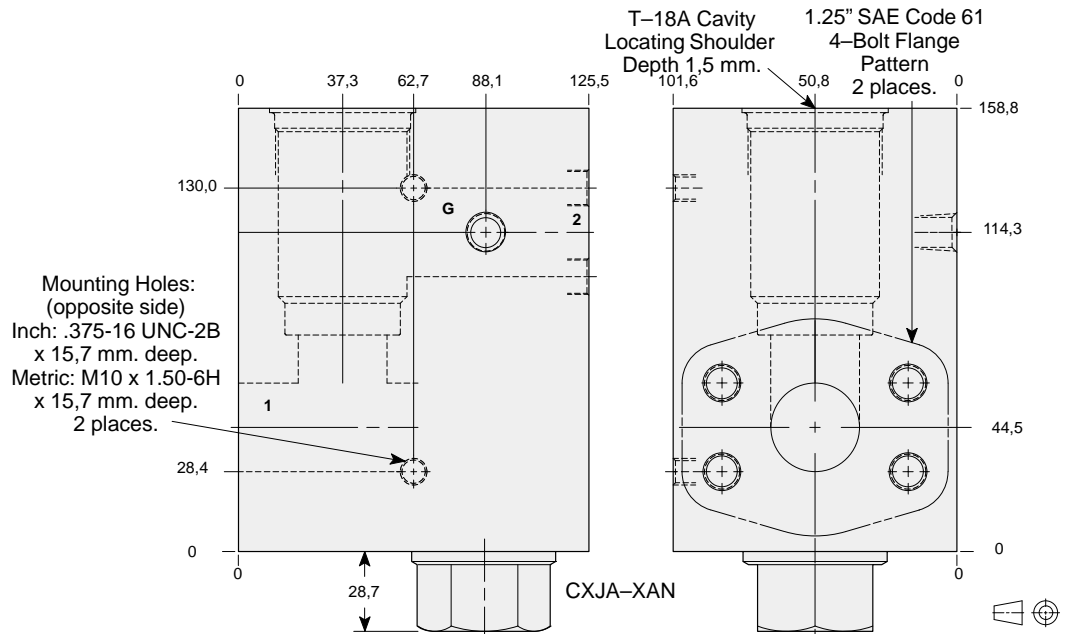
- RPKC - \*\*\* Page 1.07
- RPKE - \*\*\* Page 1.09
- RDJA - \*\*\* Page 1.11
- RQKB - \*\*\* Page 1.13
- RPKD - \*\*\* Page 1.15

Cartridge seal type determines check valve seal type.

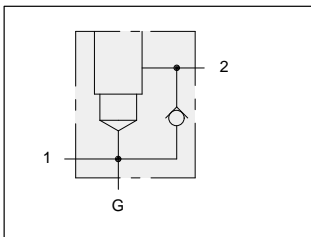
Instructions for ordering complete cartridge and body assemblies. Page viii

Pressure ratings, material specifications. Page 11.02

SAE Specifications. Page 11.03



Mounting Hole Dimensions	Gauge Port	ALUMINIUM		SG IRON	
		Model Code	List Price	Model Code	List Price
Inch	.25 NPTF	LNQ		LNQ/S	
Metric	.25 BSPP	LNQ/M		LNQ/T	



## 1.25" SAE Code 62 flange port body with reverse free flow check for relief applications.

### TYPICAL CARTRIDGES USED WITH THIS BODY

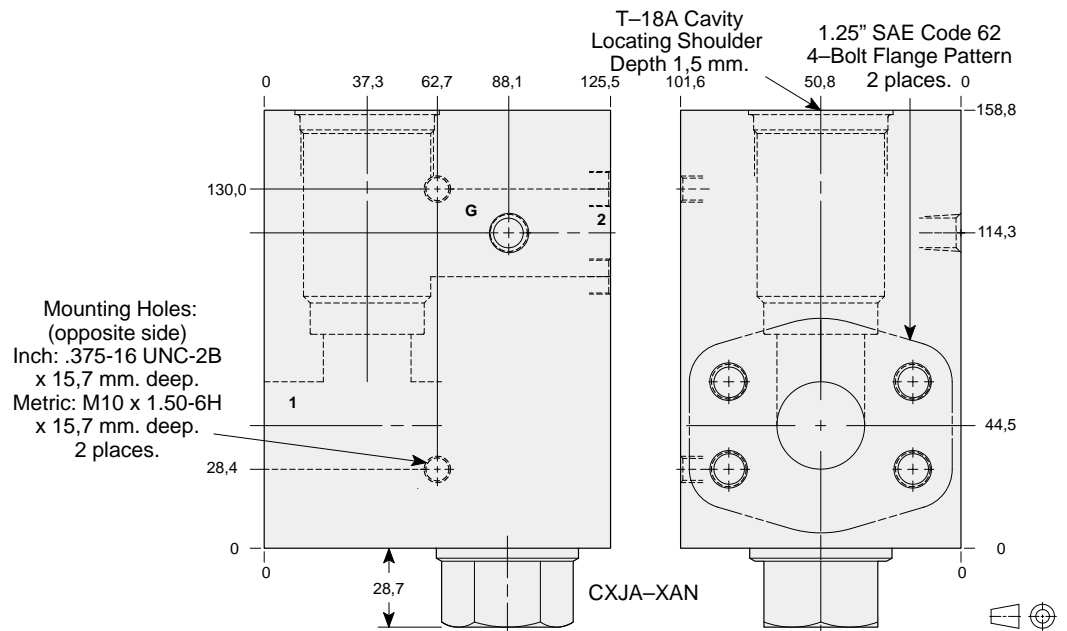
- RPKC - \*\*\* Page 1.07
- RPKE - \*\*\* Page 1.09
- RDJA - \*\*\* Page 1.11
- RQKB - \*\*\* Page 1.13
- RPKD - \*\*\* Page 1.15

Cartridge seal type determines check valve seal type.

Instructions for ordering complete cartridge and body assemblies. Page viii

Pressure ratings, material specifications. Page 11.02

SAE Specifications. Page 11.03



Mounting Hole Dimensions	Gauge Port	ALUMINIUM		SG IRON	
		Model Code	List Price	Model Code	List Price
Inch	.25 NPTF	LN5		LN5/S	
Metric	.25 BSPP	LN5/M		LN5/T	

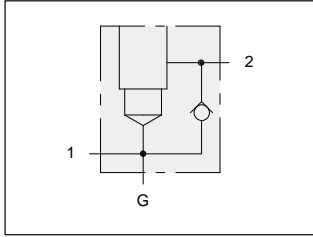
Series 4 T-18A



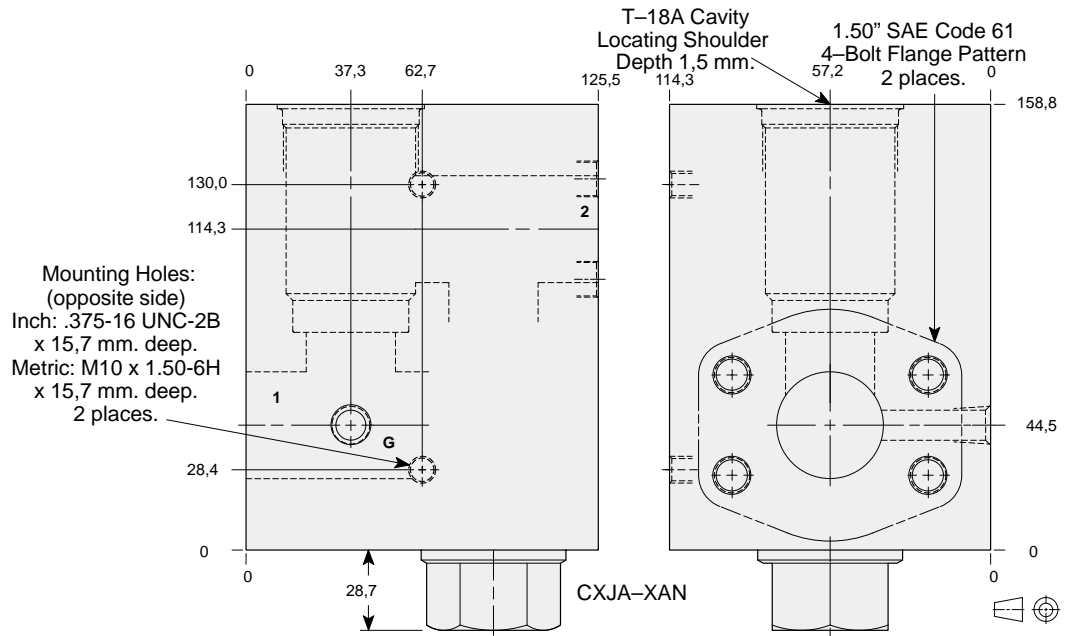
# LINE MOUNT BODIES



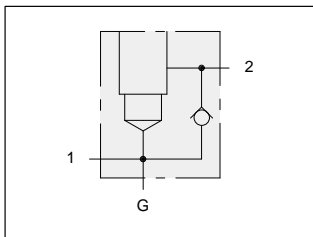
- Aluminium rated to 210 bar and SG Iron rated to 350 bar.



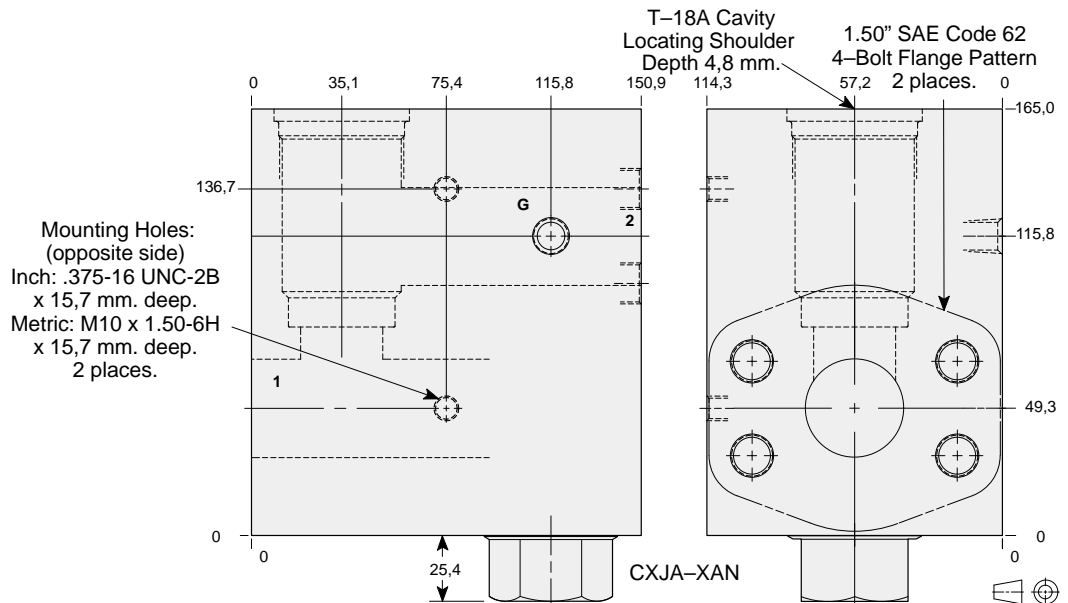
## 1.50" SAE Code 61 flange port body with reverse free flow check for relief applications.



Mounting Hole Dimensions	Gauge Port	ALUMINIUM		SG IRON	
		Model Code	List Price	Model Code	List Price
Inch	.25 NPTF	LN6		LN6/S	
Metric	.25 BSPP	LN6/M		LN6/T	



## 1.50" SAE Code 62 flange port body with reverse free flow check for relief applications.



Mounting Hole Dimensions	Gauge Port	ALUMINIUM		SG IRON	
		Model Code	List Price	Model Code	List Price
Inch	.25 NPTF	LN6		LN6/S	
Metric	.25 BSPP	LN6/M		LN6/T	

### TYPICAL CARTRIDGES USED WITH THIS BODY

- RPKC - \*\*\* Page 1.07
- RPKE - \*\*\* Page 1.09
- RDJA - \*\*\* Page 1.11
- RQKB - \*\*\* Page 1.13
- RPKD - \*\*\* Page 1.15

Cartridge seal type determines check valve seal type.

Instructions for ordering complete cartridge and body assemblies. Page viii

Pressure ratings, material specifications. Page 11.02

SAE Specifications. Page 11.03

### TYPICAL CARTRIDGES USED WITH THIS BODY

- RPKC - \*\*\* Page 1.07
- RPKE - \*\*\* Page 1.09
- RDJA - \*\*\* Page 1.11
- RQKB - \*\*\* Page 1.13
- RPKD - \*\*\* Page 1.15

Cartridge seal type determines check valve seal type.

Instructions for ordering complete cartridge and body assemblies. Page viii

Pressure ratings, material specifications. Page 11.02

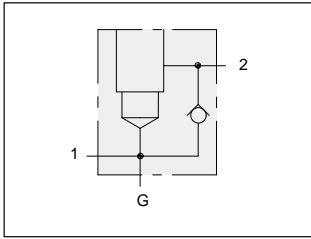
SAE Specifications. Page 11.03



# LINE MOUNT BODIES



- Aluminium rated to 210 bar and SG Iron rated to 350 bar.



## 2.00" SAE Code 61 flange port body with reverse free flow check for relief applications.

### TYPICAL CARTRIDGES USED WITH THIS BODY

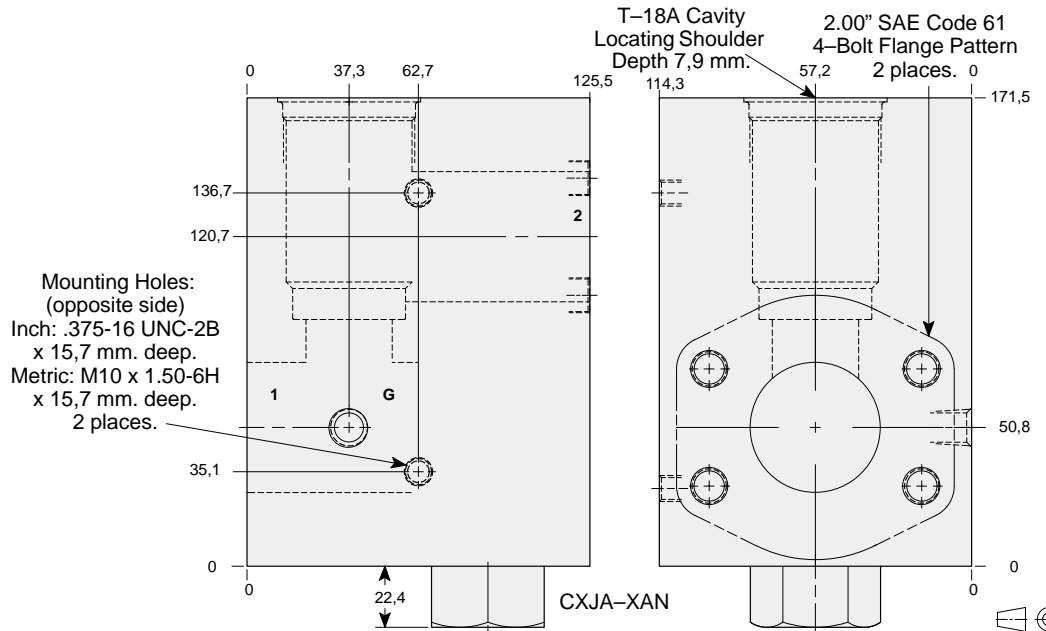
- RPKC - \*\*\* Page 1.07
- RPKE - \*\*\* Page 1.09
- RDJA - \*\*\* Page 1.11
- RQKB - \*\*\* Page 1.13
- RPKD - \*\*\* Page 1.15

Cartridge seal type determines check valve seal type.

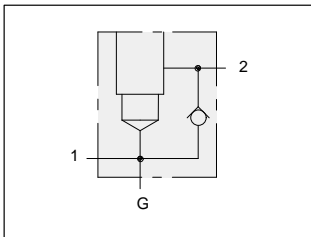
Instructions for ordering complete cartridge and body assemblies. Page viii

Pressure ratings, material specifications. Page 11.02

SAE Specifications. Page 11.03



Mounting Hole Dimensions	Gauge Port	ALUMINIUM		SG IRON	
		Model Code	List Price	Model Code	List Price
Inch	.25 NPTF	LNS		LNS/S	
Metric	.25 BSPP	LNS/M		LNS/T	



## 2.00" SAE Code 62 flange port body with reverse free flow check for relief applications.

### TYPICAL CARTRIDGES USED WITH THIS BODY

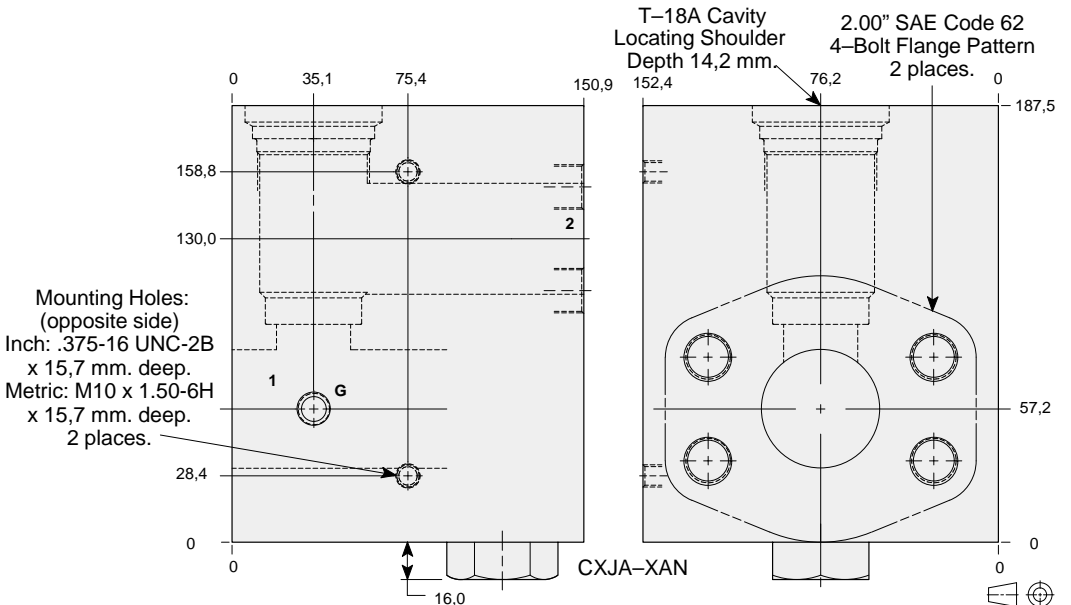
- RPKC - \*\*\* Page 1.07
- RPKE - \*\*\* Page 1.09
- RDJA - \*\*\* Page 1.11
- RQKB - \*\*\* Page 1.13
- RPKD - \*\*\* Page 1.15

Cartridge seal type determines check valve seal type.

Instructions for ordering complete cartridge and body assemblies. Page viii

Pressure ratings, material specifications. Page 11.02

SAE Specifications. Page 11.03



Mounting Hole Dimensions	Gauge Port	ALUMINIUM		SG IRON	
		Model Code	List Price	Model Code	List Price
Inch	.25 NPTF	LN8		LN8/S	
Metric	.25 BSPP	LN8/M		LN8/T	

Series 4 T-18A