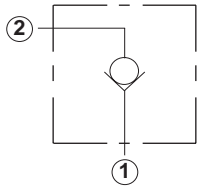


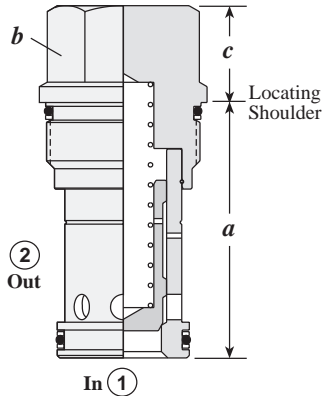
Check Valves

1 TO 2 FREE FLOW



Capacity	Typical Cartridge Model Code	Cavity	Cartridge Dimensions			Installation Torque (Nm)
			a	b	c X	
40 L/min.	CXBA – XCN	T - 162A	31	19,1	21	35/40
80 L/min.	CXDA – XCN	T - 13A	34,9	22,2	19	40/50
160 L/min.	CXFA – XCN	T - 5A	41,1	28,6	18	60/70
320 L/min.	CXHA – XCN	T - 16A	61,9	31,8	25	200/215
640 L/min.	CXJA – XCN	T - 18A	79,9	41,3	31	465/500

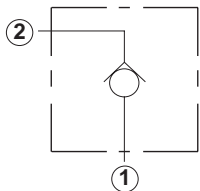
OPTION ORDERING INFORMATION



Nominal Capacity	Control**		Cracking Pressure		Seal
	X		A	B	
B 40 L/min.	X	Non-adjustable	A 0,3 bar	B 1,0 bar	N Buna-N
D 80 L/min.			C 2,0 bar	D 3,5 bar	V Viton
F 160 L/min.			E 5,0 bar	F 7,0 bar	
H 320 L/min.					
J 640 L/min.					

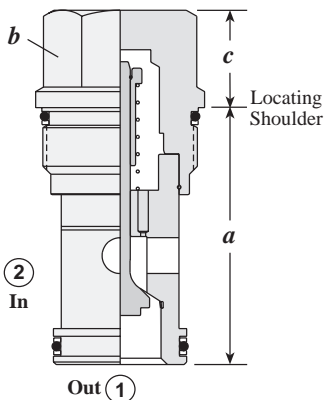
** See page 244 for information on Control Options

2 TO 1 FREE FLOW



Capacity	Typical Cartridge Model Code	Cavity	Cartridge Dimensions			Installation Torque (Nm)
			a	b	c X	
30 L/min.	CXAD – XCN	T - 162A	31	19,1	21	35/40
60 L/min.	CXCD – XCN	T - 13A	34,9	22,2	19	40/50
120 L/min.	CXED – XCN	T - 5A	41,1	28,6	18	60/70
240 L/min.	CXGD – XCN	T - 16A	61,9	31,8	25	200/215
480 L/min.	CXID – XCN	T - 18A	79,9	41,3	31	465/500

OPTION ORDERING INFORMATION



Nominal Capacity	Control**		Cracking Pressure		Seal
	X		A	B	
A* 30 L/min.	X	Non-adjustable	A 0,3 bar	B 1,0 bar	N Buna-N
C 60 L/min.			C 2,0 bar	D 3,5 bar	V Viton
E 120 L/min.			E 5,0 bar	F 7,0 bar	
G 240 L/min.					
I 480 L/min.					

** See page 244 for information on Control Options

*CXAD available with A,C,E Cracking Pressures Only.

TECHNICAL TIPS / PERFORMANCE CURVES

Check Valves, Free Flow, Port 1 to 2

Applications

Check valves are used to provide free flow in one direction and blocked flow in the opposite direction. The preferred check CX*A-X*N (free flow 1 to 2) should be used wherever possible.

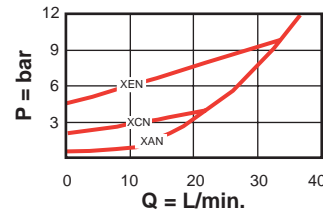
Design Concepts and Features

- Hardened and lapped sealing surfaces provide low leakage (less than 1 drop / min.) and long life.
- Extensive range of spring options.
- Available in five frame sizes with operating pressures to 350 bar.

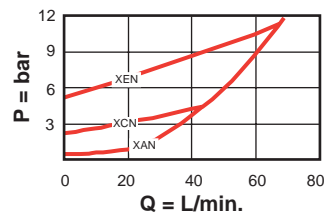
Performance Curves

Typical Pressure Rise

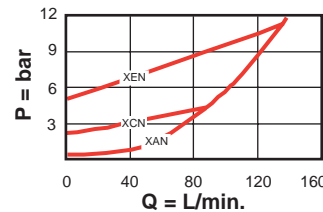
CXBA-X*N



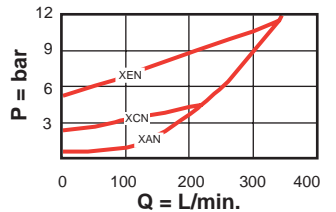
CXDA-X*N



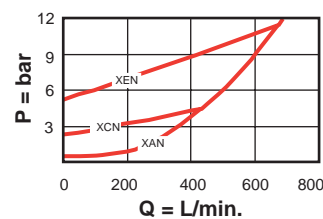
CXFA-X*N



CXHA-X*N



CXJA-X*N



Check Valves, Free Flow, Port 2 to 1

Applications

The CX*D-X*N non-preferred check (free flow 2 to 1) should only be used to simplify complex manifold designs.

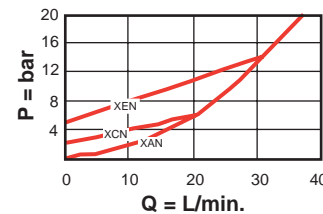
Design Concepts and Features

- Hardened and lapped sealing surfaces provide low leakage (less than 1 drop / min.) and long life.
- Extensive range of spring options.
- Available in five frame sizes with operating pressures to 350 bar.

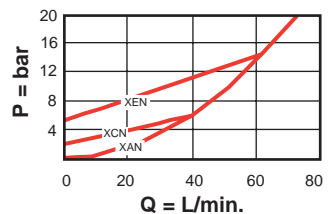
Performance Curves

Typical Pressure Rise

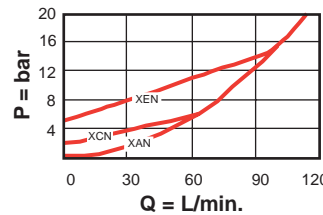
CXAD-X*N



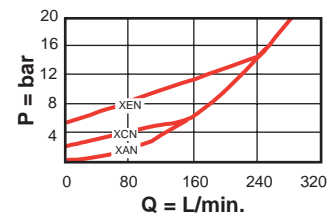
CXCD-X*N



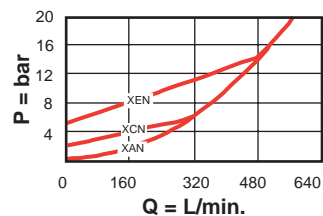
CXED-X*N



CXGD-X*N



CXID-X*N



General Application Requirements

- Operating Temperature Range: Buna-N seals -45° C to 90° C, Viton seals -15° C to 120° C.
- Viscosity Range: 10-600 centistokes.
- Fluid Contamination Level: ISO 4406 18/15 or better; Recommend $\beta_{10} \geq 75$ to achieve ISO 18/15 or better in most systems.
- Factory Pressure Setting for cartridge is established at a crack flow rate.