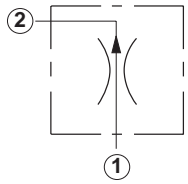


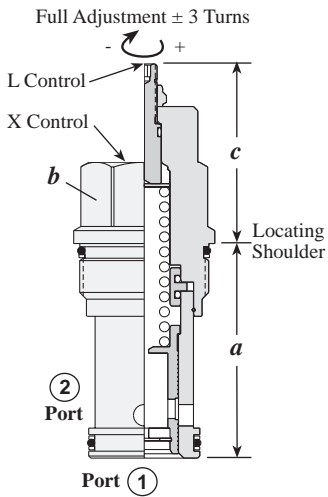
Flow Control Valves

FIXED ORIFICE, PRESSURE COMPENSATED



Capacity	Typical Cartridge Model Code	Cavity	Cartridge Dimensions					Installation Torque (Nm)
			a	b	c			
					X	L	K	
0,4-12 L/min.	FXBA – LAN	T - 162A	31	19,1	21	54	58	35/40
0,4-23 L/min.	FXCA – LAN	T - 13A	34,9	22,2	19	51	58	40/50
0,4-45 L/min.	FXDA – LAN	T - 5A	41,1	28,6	18	54	61	60/70
0,8-95 L/min.	FXEA – LAN	T - 16A	61,9	31,8	25	62	69	200/215
0,8-200 L/min.	FXFA – LAN	T - 18A	79,4	41,3	31	72	78	465/500

OPTION ORDERING INFORMATION



FX * A - * A *

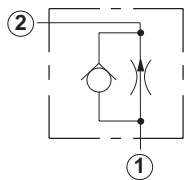
Nominal Capacity	Control**	Adjustment Range	Seal
B 0,4-12 L/min.	X Non-adjustable Factory set at customer specified flow	A Fixed Orifice	N Buna-N
C 0,4-23 L/min.		L Tuning Adjustment $\pm 25\%$ of customer specified flow	V Viton
D 0,4-45 L/min.		K Handknob for L control	
E 0,8-95 L/min.			
F 0,8-200 L/min.			

Customer must specify flow

Flow Ranges by Frame Size:
 FXBA: 0,4 - 12 L/min.
 FXCA: 0,4 - 23 L/min.
 FXDA: 0,4 - 45 L/min.
 FXEA: 0,8 - 95 L/min.
 FXFA: 0,8 - 200 L/min.

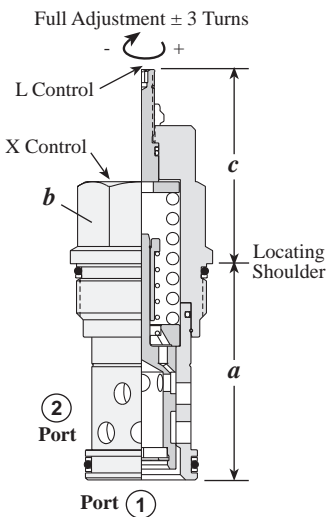
** See page 244 for information on Control Options

FIXED ORIFICE, PRESSURE COMPENSATED WITH FREE FLOW CHECK



Capacity	Typical Cartridge Model Code	Cavity	Cartridge Dimensions					Installation Torque (Nm)
			a	b	c			
					X	L	K	
0,4-12 L/min.	FCBB – LAN	T - 162A	31	19,1	21	54	58	35/40
0,4-23 L/min.	FCCB – LAN	T - 13A	34,9	22,2	19	51	58	40/50
0,4-45 L/min.	FCDB – LAN	T - 5A	41,1	28,6	18	54	61	60/70
0,8-95 L/min.	FCEB – LAN	T - 16A	61,9	31,8	25	62	69	200/215
0,8-200 L/min.	FCFB – LAN	T - 18A	79,4	41,3	31	72	78	465/500

OPTION ORDERING INFORMATION



FC * B - * A *

Nominal Capacity	Control**	Adjustment Range	Seal
B 0,4-12 L/min.	X Non-adjustable Factory set at customer specified flow	A Fixed Orifice	N Buna-N
C 0,4-23 L/min.		L Tuning Adjustment $\pm 25\%$ of customer specified flow	V Viton
D 0,4-45 L/min.		K Handknob for L control	
E 0,8-95 L/min.			
F 0,8-200 L/min.			

Customer must specify flow

Flow Ranges by Frame Size:
 FCBB: 0,4 - 12 L/min.
 FCCB: 0,4 - 23 L/min.
 FCDB: 0,4 - 45 L/min.
 FCEB: 0,8 - 95 L/min.
 FCFB: 0,8 - 200 L/min.

** See page 244 for information on Control Options

TECHNICAL TIPS / PERFORMANCE CURVES

Flow Control Valves, Fixed Orifice, Pressure Compensated

Applications

These pressure-compensated cartridges provide precise flow regulation for meter-in and meter-out applications. They also offer accurate control in bleed-off circuits where the load pressure and inlet flow are relatively constant.

NOTE: Accurate pressure-compensated control requires a 14 bar minimum pressure differential be maintained across the valve

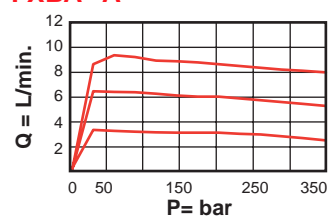
Design Concepts and Features

- Minimum flow change over widely varying load pressure changes (less than $\pm 5\%$ over 315 bar load change).
- Selectable fixed orifice size (flow capacity 0,4 to 200 L/min., dependent on frame size).
- Tunable control option to provide $\pm 25\%$ variation of the nominal factory set flow.

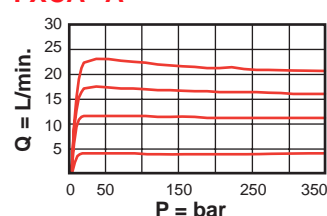
Performance Curves

Typical Performance

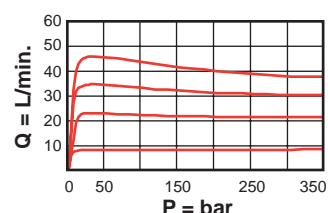
FXBA-*A*



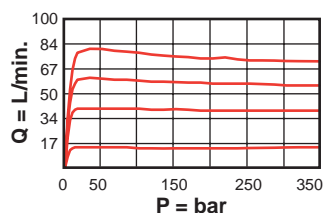
FXCA-*A*



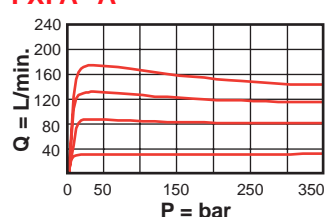
FXDA-*A*



FXEA-*A*



FXFA-*A*



Flow Control Valves, Fixed Orifice, Pressure Compensated with Free Flow Check

Applications

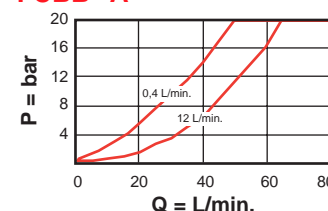
The performance parameters of the FC*B pressure compensated flow control with free flow check are identical to the FX*A, but with the addition of a high capacity free flow check.

Note: Accurate pressure-compensated control requires a 14 bar minimum pressure differential be maintained across the valve

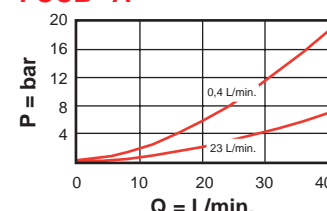
Performance Curves

Reverse Free Flow Pressure Drop

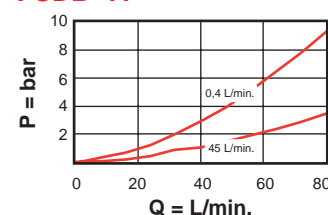
FCBB-*A*



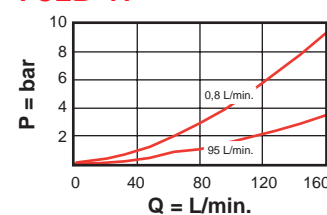
FCCB-*A*



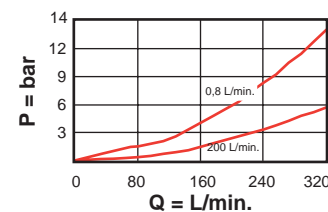
FCDB-*A*



FCEB-*A*



FCFB-*A*



General Application Requirements

- Operating Temperature Range: Buna-N seals -45°C to 90°C , Viton seals -15°C to 120°C .
- Viscosity Range: 10-600 centistokes.
- Fluid Contamination Level: ISO 4406 18/15 or better; Recommend $\beta_{10} \geq 75$ to achieve ISO 18/15 or better in most systems.
- Factory Pressure Setting for cartridge is established at a 15 L/min. flow rate.