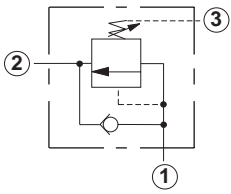
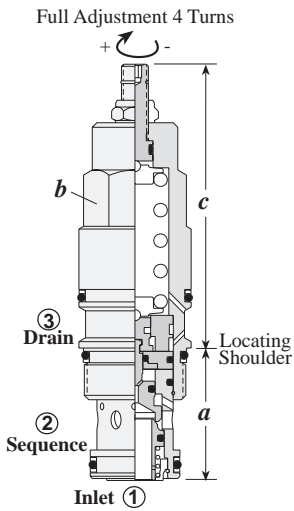


DIRECT ACTING WITH REVERSE FREE FLOW CHECK



Capacity	Typical Cartridge Model Code	Cavity	Cartridge Dimensions				Installation Torque (Nm)
			a	b	c		
					L	C	
60 L/min.	SCCA – LAN	T - 11A	34,9	22,2	79	81	40/50
120 L/min.	SCEA – LAN	T - 2A	34,9	28,6	89	91	60/70
240 L/min.	SCGA – LAN	T - 17A	46	31,8	100	102	200/215
480 L/min.	SCIA – LAN	T - 19A	63,5	41,3	120	124	465/500

OPTION ORDERING INFORMATION



**SC \* A - \* \* \***

	<b>Control**</b>	<b>Adjustment Range</b>	<b>Seal</b>
<b>Nominal Capacity</b>			
<b>C</b> 60 L/min.	<b>L</b> Standard Screw	<b>A</b> 35 - 210 bar	<b>N</b> Buna-N
<b>E</b> 120 L/min.	<b>C</b> Tamper Resistant	<b>W</b> 55 - 315 bar	<b>V</b> Viton
<b>G</b> 240 L/min.		<b>B</b> 20 - 105 bar	
<b>I</b> 480 L/min.		<b>D</b> 14 - 55 bar	
		<b>C</b> 140 - 420 bar	

*Adjustment Range Options:*  
 A, B and W are standard set at 70 bar.  
 C Option is standard set at 140 bar.  
 D Option is standard set at 25 bar.  
**Customer may specify pressure setting.**

\*\* See page 244 for information on Control Options

# TECHNICAL TIPS / PERFORMANCE CURVES

## Sequence Valves, Reverse Free Flow Check

### Applications

SC\*A series of sequence valves have an integral reverse free flow check and may be used in a similar manner to the cartridges without the check.

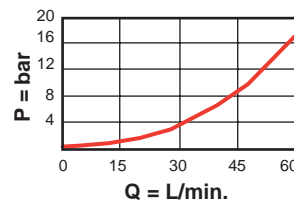
### Design Concepts and Features

- This is a zero pilot flow valve. Port 3 must not be plugged.
- Pressure at Port 3 is directly additive to valve setting.
- Typical response time is 2 ms.
- Maximum leakage is 10 drops/min. at reseal.
- Reseat exceeds 85% of set pressure.
- Reverse free flow check cracking pressure is 1,4 bar to 3,0 bar, depending on frame size.

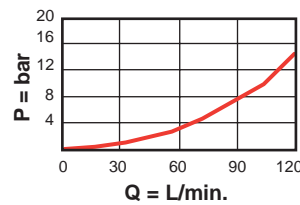
### Performance Curves

#### Pressure Drop-full Sequence

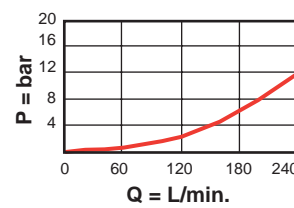
##### SCCA-L\*N



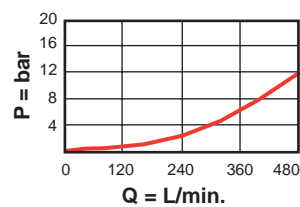
##### SCEA-L\*N



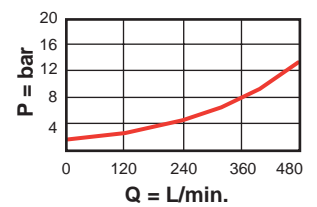
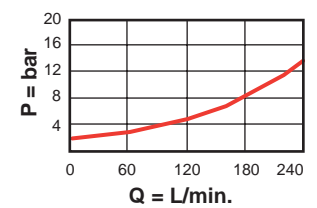
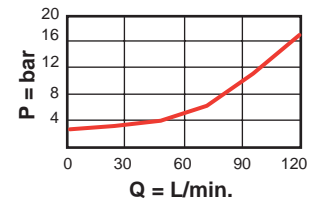
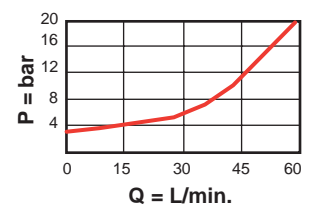
##### SCGA-L\*N



##### SCIA-L\*N



#### Reverse Free Flow



## General Application Requirements

- Operating Temperature Range: Buna-N seals -45° C to 90° C, Viton seals -15° C to 120° C.
- Viscosity Range: 10-600 centistokes.
- Fluid Contamination Level: ISO 4406 18/15 or better; Recommend  $\beta_{10} \geq 75$  to achieve ISO 18/15 or better in most systems.
- Factory Pressure Setting for cartridge is established at a 15 L/min. flow rate.