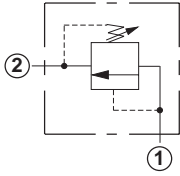
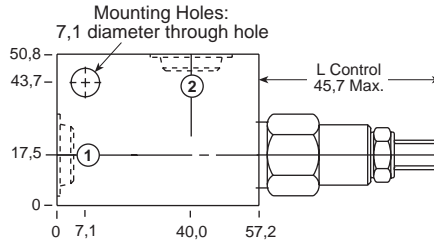


Line Mounted Assemblies

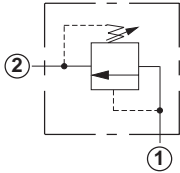
TWO PORT PRESSURE REGULATING RELIEF APPLICATIONS
(90 DEGREE BODIES)PILOT OPERATED
ASSEMBLIESGo to www.sunhydraulics.com
for more product information.DIRECT ACTING
ASSEMBLIES

Ports 1 and 2	Assembly Model Code*
1/4" BSPP	RPCC-LAN-AAT
3/8" BSPP	RPCC-LAN-AAU

0-45 L/min. Cavity T-162A

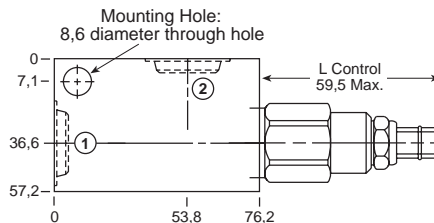


Ports 1 and 2	Assembly Model Code*
1/4" BSPP	RDBA-LAN-AAT
3/8" BSPP	RDBA-LAN-AAU

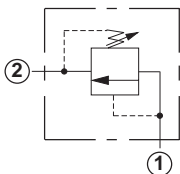
*Add modifier /S to order SG Iron for pressure rating
over 210 bar.*Add modifier /S to order SG Iron for pressure rating
over 210 bar.

Ports 1 and 2	Assembly Model Code*
3/8" BSPP	RPEC-LAN-FAU
1/2" BSPP	RPEC-LAN-FAV
3/4" BSPP	RPEC-LAN-FAW

0-95 L/min. Cavity T-10A

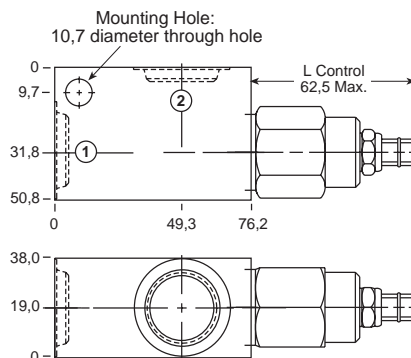


Ports 1 and 2	Assembly Model Code*
3/8" BSPP	RDDA-LAN-FAU
1/2" BSPP	RDDA-LAN-FAV
3/4" BSPP	RDDA-LAN-FAW

*Add modifier /S to order SG Iron for pressure rating
over 210 bar.*Add modifier /S to order SG Iron for pressure rating
over 210 bar.

Ports 1 and 2	Assembly Model Code*
1/2" BSPP	RPGC-LAN-CAV
3/4" BSPP	RPGC-LAN-CAW

0-200 L/min. Cavity T-3A



Ports 1 and 2	Assembly Model Code*
1/2" BSPP	RDFA-LAN-CAV
3/4" BSPP	RDFA-LAN-CAW

*Add modifier /S to order SG Iron for pressure rating
over 210 bar.*Add modifier /S to order SG Iron for pressure rating
over 210 bar.

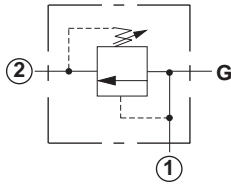
NOTES: Page 2 for cartridge models RP*C-*** and RD*A-*** shows performance curves, technical tips, and options.
See page vii for technical information about line mount bodies including SAE flange pattern specifications.
Consult the Sun Factory for other port sizes available in the bodies shown above.
Model Codes printed in red are Preferred Products and are readily available.

**TWO PORT PRESSURE REGULATING RELIEF APPLICATIONS
(90 DEGREE/90 DEGREE 1.50" SAE C62 FLANGE PORT BODIES)**

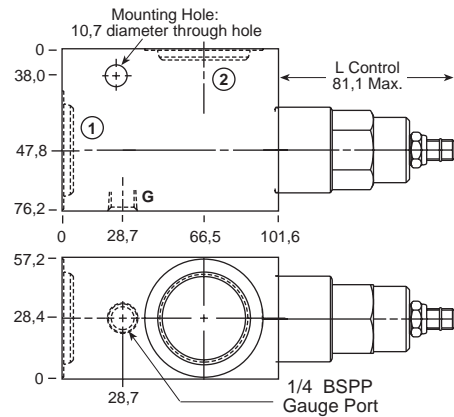
PILOT OPERATED ASSEMBLIES

Go to www.sunhydraulics.com for more product information.

DIRECT ACTING ASSEMBLIES



0-380 L/min. Cavity T-16A

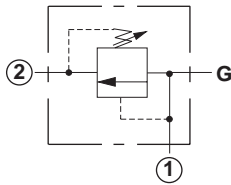


Ports 1 and 2	Assembly Model Code*
3/4" BSPP	RPIC-LAN-IAW
1" BSPP	RPIC-LAN-IAX
1 1/4" BSPP	RPIC-LAN-IAY

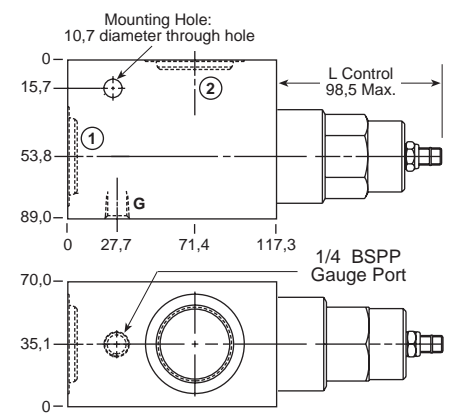
Ports 1 and 2	Assembly Model Code*
3/4" BSPP	RDHA-LAN-IAW
1" BSPP	RDHA-LAN-IAX
1 1/4" BSPP	RDHA-LAN-IAY

*Add modifier /S to order SG Iron for pressure rating over 210 bar.

*Add modifier /S to order SG Iron for pressure rating over 210 bar.



0-760 L/min. Cavity T-18A

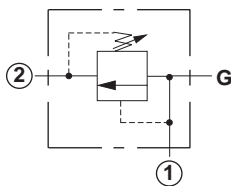


Ports 1 and 2	Assembly Model Code*
3/4" BSPP	RPKC-LAN-LAW
1" BSPP	RPKC-LAN-LAX
1 1/4" BSPP	RPKC-LAN-LAY

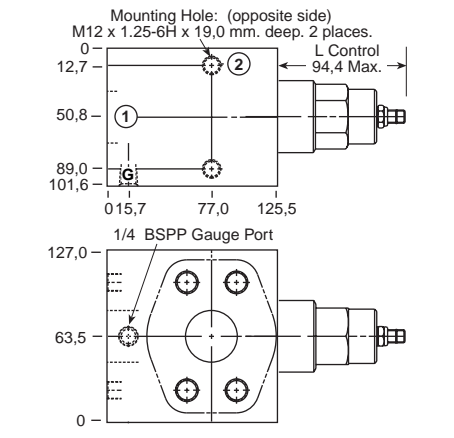
Ports 1 and 2	Assembly Model Code*
3/4" BSPP	RDJA-LAN-LAW
1" BSPP	RDJA-LAN-LAX
1 1/4" BSPP	RDJA-LAN-LAY

*Add modifier /S to order SG Iron for pressure rating over 210 bar.

*Add modifier /S to order SG Iron for pressure rating over 210 bar.



0-760 L/min. Cavity T-18A



Ports 1 and 2	Assembly Model Code*
1 1/2" SAE C62	RPKC-LAN-LA6/M

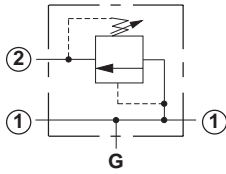
Ports 1 and 2	Assembly Model Code*
1 1/2" SAE C62	RDJA-LAN-LA6/M

*Add modifier /T to order SG Iron for pressure rating over 210 bar.

*Add modifier /T to order SG Iron for pressure rating over 210 bar.

NOTES: Page 2 for cartridge models RP*C-*** and RD*A-*** shows performance curves, technical tips, and options. See page vii for technical information about line mount bodies including SAE flange pattern specifications. Consult the Sun Factory for other port sizes available in the bodies shown above. Model Codes printed in red are Preferred Products and are readily available.

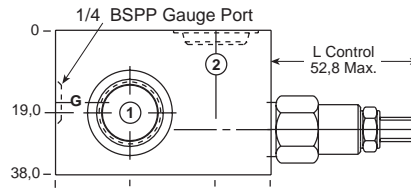
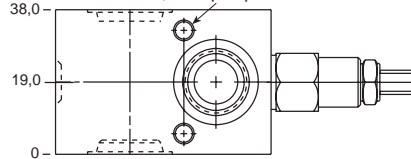
Line Mounted Assemblies

TWO PORT PRESSURE REGULATING RELIEF APPLICATIONS
(THROUGH PORT BODIES)PILOT OPERATED
ASSEMBLIESGo to www.sunhydraulics.com
for more product information.DIRECT ACTING
ASSEMBLIES

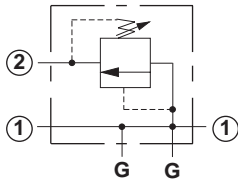
Ports 1 and 2	Assembly Model Code*
1/4" BSPP	RPCC-LAN-AET
3/8" BSPP	RPCC-LAN-AEU

*Add modifier /S to order SG Iron for pressure rating
over 210 bar.

0-45 L/min. Cavity T-162A

Mounting Holes: (opposite side)
M6 x 1.0-6H x 12,7 deep. 2 places.

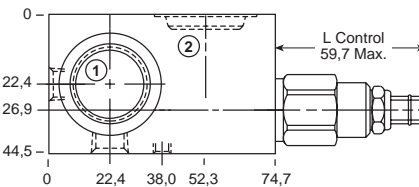
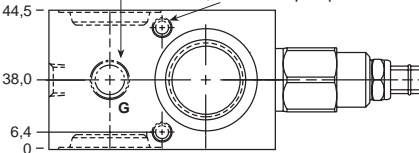
Ports 1 and 2	Assembly Model Code*
1/4" BSPP	RDBA-LAN-AET
3/8" BSPP	RDBA-LAN-AEU

*Add modifier /S to order SG Iron for pressure rating
over 210 bar.

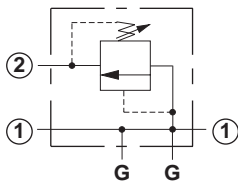
Ports 1 and 2	Assembly Model Code*
3/8" BSPP	RPEC-LAN-FEU
1/2" BSPP	RPEC-LAN-FEV

*Add modifier /S to order SG Iron for pressure rating
over 210 bar.

0-95 L/min. Cavity T-10A

Mounting Holes:
(opposite side)
M6 x 1.00-6H x
12,7 mm. deep. 2 places.

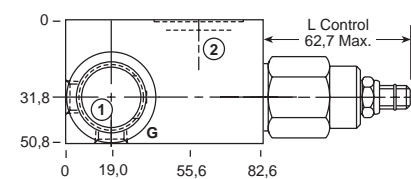
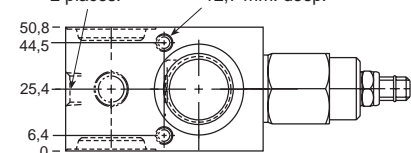
Ports 1 and 2	Assembly Model Code*
3/8" BSPP	RDDA-LAN-FEU
1/2" BSPP	RDDA-LAN-FEV

*Add modifier /S to order SG Iron for pressure rating
over 210 bar.

Ports 1 and 2	Assembly Model Code*
1/2" BSPP	RPGC-LAN-CEV
3/4" BSPP	RPGC-LAN-CEW

*Add modifier /S to order SG Iron for pressure rating
over 210 bar.

0-200 L/min. Cavity T-3A

Mounting Hole:
(opposite side)
M6 x 1.00-6H x
12,7 mm. deep.

Ports 1 and 2	Assembly Model Code*
1/2" BSPP	RDFA-LAN-CEV
3/4" BSPP	RDFA-LAN-CEW

*Add modifier /S to order SG Iron for pressure rating
over 210 bar.

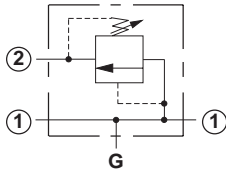
NOTES: Page 2 for cartridge models RP*C-*** and RD*A-*** shows performance curves, technical tips, and options.
See page vii for technical information about line mount bodies including SAE flange pattern specifications.
Consult the Sun Factory for other port sizes available in the bodies shown above.
Model Codes printed in red are Preferred Products and are readily available.

TWO PORT PRESSURE REGULATING RELIEF APPLICATIONS (THROUGH PORT BODIES)

PILOT OPERATED ASSEMBLIES

Go to www.sunhydraulics.com for more product information.

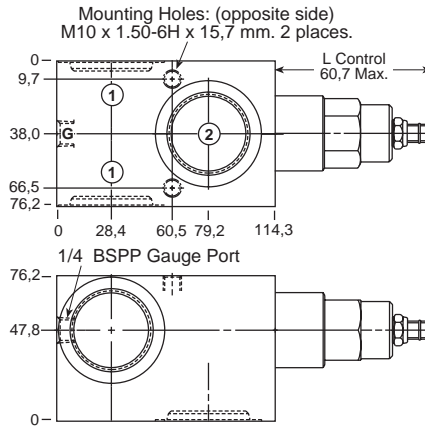
DIRECT ACTING ASSEMBLIES



Ports 1 and 2	Assembly Model Code*
1" BSPP	RPIC-LAN-IEX
1 1/4" BSPP	RPIC-LAN-IEY

*Add modifier /S to order SG Iron for pressure rating over 210 bar.

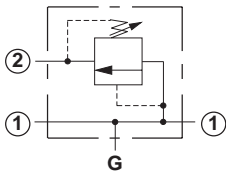
0-380 L/min. Cavity T-16A



Ports 1 and 2	Assembly Model Code*
1" BSPP	RDHA-LAN-IEX
1 1/4" BSPP	RDHA-LAN-IEY

*Add modifier /S to order SG Iron for pressure rating over 210 bar.

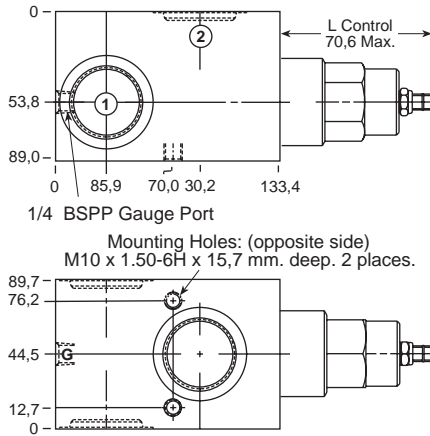
PILOT OPERATED ASSEMBLIES



Ports 1 and 2	Assembly Model Code*
1" BSPP	RPKC-LAN-LEX
1 1/4" BSPP	RPKC-LAN-LEY

*Add modifier /S to order SG Iron for pressure rating over 210 bar.

0-760 L/min. Cavity T-18A



Ports 1 and 2	Assembly Model Code*
1" BSPP	RDJA-LAN-LEX
1 1/4" BSPP	RDJA-LAN-LEY

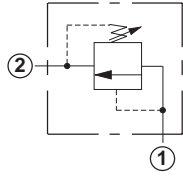
*Add modifier /S to order SG Iron for pressure rating over 210 bar.

NOTES: Page 2 for cartridge models RP*C-*** and RD*A-*** shows performance curves, technical tips, and options. See page vii for technical information about line mount bodies including SAE flange pattern specifications. Consult the Sun Factory for other port sizes available in the bodies shown above. Model Codes printed in red are Preferred Products and are readily available.

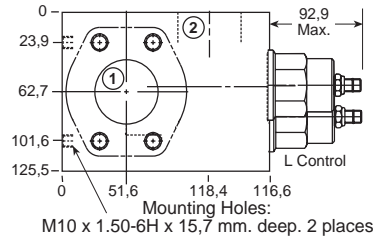
Line Mounted Assemblies

TWO PORT PRESSURE REGULATING RELIEF APPLICATIONS (2.00" SAE C61/C62 FLANGE PORT BODIES 2 CAVITIES)

**PILOT OPERATED
ASSEMBLIES**

 Go to www.sunhydraulics.com
for more product information.


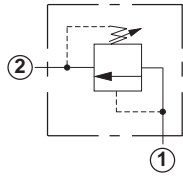
Ports 1 and 2	Assembly Model Code*
2" SAE C61	RPKC-LAN-XZY/M

0-1600 L/min. Cavity T-18A


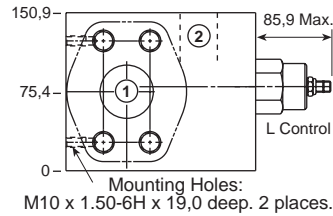
Ports 1 and 2	Assembly Model Code*
2" SAE C61	RDJA-LAN-XZY/M

*Add modifier **/T** to order SG Iron for pressure rating over 210 bar.

*Add modifier **/T** to order SG Iron for pressure rating over 210 bar.

0-1600 L/min. Cavity T-18A


Ports 1 and 2	Assembly Model Code*
2" SAE C62	RPKC-LAN-VTN/M



Ports 1 and 2	Assembly Model Code*
2" SAE C62	RDJA-LAN-VTN/M

*Add modifier **/T** to order SG Iron for pressure rating over 210 bar.

*Add modifier **/T** to order SG Iron for pressure rating over 210 bar.

NOTES: Page 2 for cartridge models RP*C-*** and RD*A-*** shows performance curves, technical tips, and options.
See page vii for technical information about line mount bodies including SAE flange pattern specifications.
Consult the Sun Factory for other port sizes available in the bodies shown above.

TWO PORT PRESSURE REGULATING RELIEF APPLICATIONS (CROSS-PORT BODIES, 2 CAVITIES)

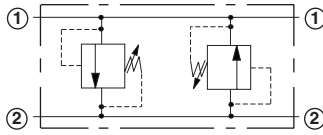
Cross-port relief assemblies are used to protect system components against hydraulic and structural damage which can be caused by the sudden stopping of an inertial load. These assemblies also protect "swing" circuits and other bi-directional installations against possible surges and cavitation.

Sun offers a series of cross-port relief assemblies for line mounting which are shown below, as well as a variety of single and dual models in sandwich bodies to simplify circuitry when using ISO 02, ISO 03, ISO 05, ISO 07 and ISO 08 solenoid valves.

PILOT OPERATED ASSEMBLIES

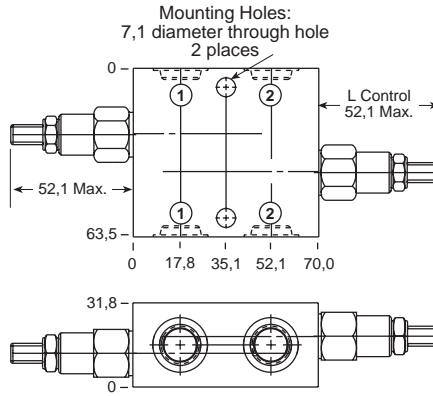
Go to www.sunhydraulics.com for more product information.

DIRECT ACTING ASSEMBLIES



Ports 1 and 2	Assembly Model Code*
1/4" BSPP	RPCC-LAN-AYT
3/8" BSPP	RPCC-LAN-AYU

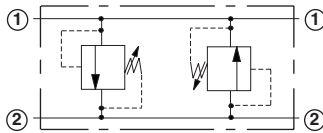
0-45 L/min. Cavity T-162A



Ports 1 and 2	Assembly Model Code*
1/4" BSPP	RDDB-LAN-AYT
3/8" BSPP	RDDB-LAN-AYU

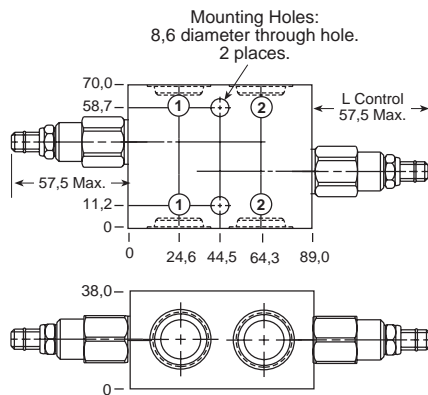
*Add modifier /S to order SG Iron for pressure rating over 210 bar.

*Add modifier /S to order SG Iron for pressure rating over 210 bar.



Ports 1 and 2	Assembly Model Code*
3/8" BSPP	RPEC-LAN-YFU
1/2" BSPP	RPEC-LAN-YFV

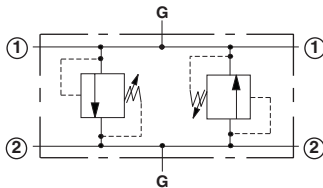
0-95 L/min. Cavity T-10A



Ports 1 and 2	Assembly Model Code*
3/8" BSPP	RDDA-LAN-YFU
1/2" BSPP	RDDA-LAN-YFV

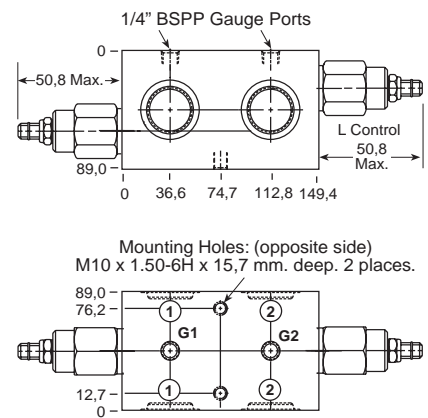
*Add modifier /S to order SG Iron for pressure rating over 210 bar.

*Add modifier /S to order SG Iron for pressure rating over 210 bar.



Ports 1 and 2	Assembly Model Code*
3/4" BSPP	RPGC-LAN-YCW
1" BSPP	RPGC-LAN-YCX

0-200 L/min. Cavity T-3A



Ports 1 and 2	Assembly Model Code*
3/4" BSPP	RDFA-LAN-YCW
1" BSPP	RDFA-LAN-YCX

*Add modifier /S to order SG Iron for pressure rating over 210 bar.

*Add modifier /S to order SG Iron for pressure rating over 210 bar.

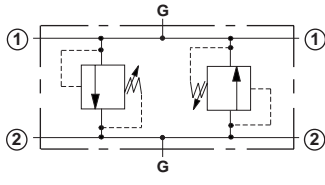
NOTES: Page 2 for cartridge models RP*C-*** and RD*A-*** shows performance curves, technical tips, and options. See page vii for technical information about line mount bodies including SAE flange pattern specifications. Consult the Sun Factory for other port sizes available in the bodies shown above. Model Codes printed in red are Preferred Products and are readily available.

Line Mounted Assemblies

TWO PORT PRESSURE REGULATING RELIEF APPLICATIONS (CROSS-PORT/CROSS-PORT, 1.50" SAE C61/C62 FLANGE PORT BODIES, 2 CAVITIES)

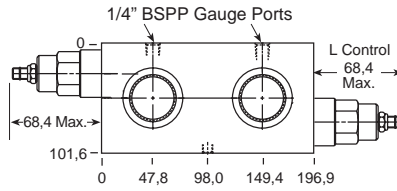
**PILOT OPERATED
ASSEMBLIES**

 Go to www.sunhydraulics.com
for more product information.

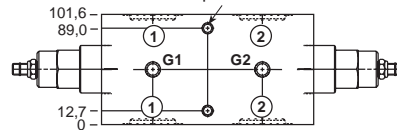
**DIRECT ACTING
ASSEMBLIES**


Ports
1 and 2
1 1/4" BSPP

Assembly
Model Code*
RPIC-LAN-YIY

0-380 L/min. Cavity T-16A


Mounting Holes: (opposite side)
M10 x 1.50-6H x 15,7 mm. deep.
2 places.

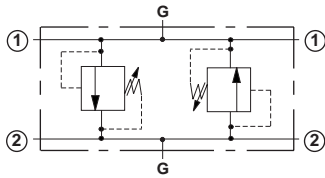


Ports
1 and 2
1 1/4" BSPP

Assembly
Model Code*
RDHA-LAN-YIY

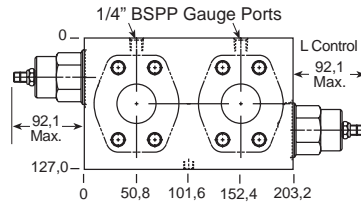
*Add modifier /S to order SG Iron for pressure rating
over 210 bar.

*Add modifier /S to order SG Iron for pressure rating
over 210 bar.

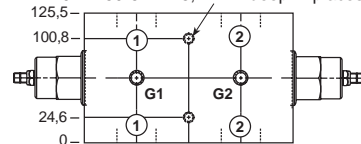


Ports
1 and 2
1 1/2" SAE C61

Assembly
Model Code*
RPKC-LAN-YLR/M

0-760 L/min. Cavity T-18A


Mounting Holes: (opposite side)
M10 x 1.50-6H x 15,7 mm. deep. 2 places.

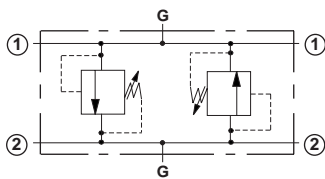


Ports
1 and 2
1 1/2" SAE C61

Assembly
Model Code*
RDJA-LAN-YLR/M

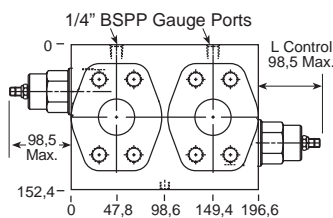
*Add modifier /T to order SG Iron for pressure rating
over 210 bar.

*Add modifier /T to order SG Iron for pressure rating
over 210 bar.

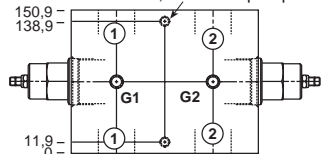


Ports
1 and 2
1 1/2" SAE C62

Assembly
Model Code*
RPKC-LAN-YL6/M

0-760 L/min. Cavity T-18A


Mounting Holes: (opposite side)
M10 x 1.50-6H x 15,7 mm. deep. 2 places.



Ports
1 and 2
1 1/2" SAE C62

Assembly
Model Code*
RDJA-LAN-YL6/M

*Add modifier /T to order SG Iron for pressure rating
over 210 bar.

*Add modifier /T to order SG Iron for pressure rating
over 210 bar.

NOTES: Page 2 for cartridge models RP*C-*** and RD*A-*** shows performance curves, technical tips, and options.
See page vii for technical information about line mount bodies including SAE flange pattern specifications.
Consult the Sun Factory for other port sizes available in the bodies shown above.
Model Codes printed in red are Preferred Products and are readily available.