

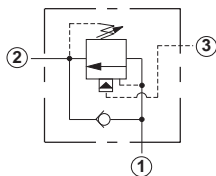
Line Mounted Assemblies

THREE PORT LOAD CONTROL APPLICATIONS (90 DEGREE BODIES)

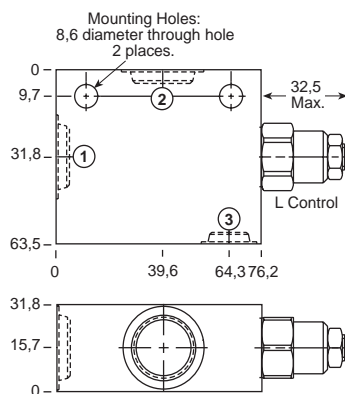
PILOT RATIO
3:1, 1.5:1, 2:1

Go to www.sunhydraulics.com
for more product information.

PILOT RATIO
2.3:1, 4.5:1, 10:1



0-60 L/min. Cavity T-11A

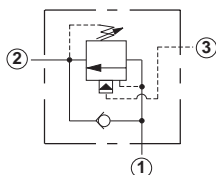


Ports 1 and 2	Port 3	Assembly Model Code*
3/8" BSPP	1/4" BSPP	CBC*-LHN-ECU
1/2" BSPP	1/4" BSPP	CBC*-LHN-ECV

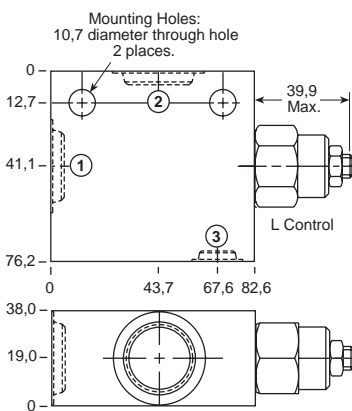
Ports 1 and 2	Port 3	Assembly Model Code*
3/8" BSPP	1/4" BSPP	CBC*-LJN-ECU
1/2" BSPP	1/4" BSPP	CBC*-LJN-ECV

The asterisk () shown in the fourth digit of the model code indicates the counterbalance pilot ratio of the cartridge and must be specified by customer. See page 50. Add modifier /S to order SG Iron for pressure rating over 210 bar.

The asterisk () shown in the fourth digit of the model code indicates the counterbalance pilot ratio of the cartridge and must be specified by customer. See page 50. Add modifier /S to order SG Iron for pressure rating over 210 bar.



0-120 L/min. Cavity T-2A



Ports 1 and 2	Port 3	Assembly Model Code*
1/2" BSPP	1/4" BSPP	CBE*-LHN-BCV
3/4" BSPP	1/4" BSPP	CBE*-LHN-BCW

Ports 1 and 2	Port 3	Assembly Model Code*
1/2" BSPP	1/4" BSPP	CBE*-LJN-BCV
3/4" BSPP	1/4" BSPP	CBE*-LJN-BCW

The asterisk () shown in the fourth digit of the model code indicates the counterbalance pilot ratio of the cartridge and must be specified by customer. See page 50. Add modifier /S to order SG Iron for pressure rating over 210 bar.

The asterisk () shown in the fourth digit of the model code indicates the counterbalance pilot ratio of the cartridge and must be specified by customer. See page 50. Add modifier /S to order SG Iron for pressure rating over 210 bar.

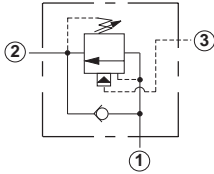
NOTES: Page 50 for cartridge models CB**-* shows performance curves, technical tips, and options.
See page vii for technical information about line mount bodies including SAE flange pattern specifications.
Consult the Sun Factory for other port sizes available in the bodies shown above.
Model Codes printed in red are Preferred Products and are readily available.

THREE PORT LOAD CONTROL APPLICATIONS (90 DEGREE BODIES)

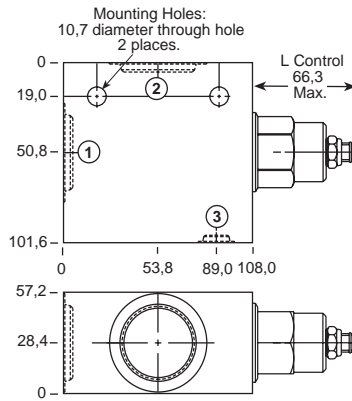
**PILOT RATIO
3:1, 1.5:1, 2:1**

Go to www.sunhydraulics.com
for more product information.

**PILOT RATIO
2.3:1, 4.5:1, 10:1**



0-240 L/min. Cavity T-17A



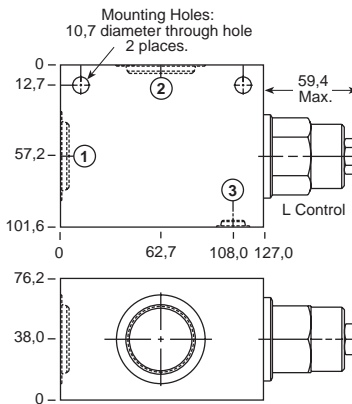
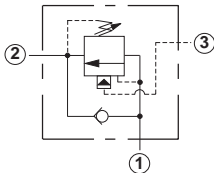
Ports 1 and 2	Port 3	Assembly Model Code*
1" BSPP	1/4" BSPP	CBG*-LHN-HCX
1 1/4" BSPP	1/4" BSPP	CBG*-LHN-HCY

Ports 1 and 2	Port 3	Assembly Model Code*
1" BSPP	1/4" BSPP	CBG*-LJN-HCX
1 1/4" BSPP	1/4" BSPP	CBG*-LJN-HCY

The asterisk () shown in the fourth digit of the model code indicates the counterbalance pilot ratio of the cartridge and must be specified by customer. See page 50. Add modifier /S to order SG Iron for pressure rating over 210 bar.

The asterisk () shown in the fourth digit of the model code indicates the counterbalance pilot ratio of the cartridge and must be specified by customer. See page 50. Add modifier /S to order SG Iron for pressure rating over 210 bar.

0-480 L/min. Cavity T-19A



Ports 1 and 2	Port 3	Assembly Model Code*
1" BSPP	1/4" BSPP	CBI*-LHN-KCX
1 1/4" BSPP	1/4" BSPP	CBI*-LHN-KCY

Ports 1 and 2	Port 3	Assembly Model Code*
1" BSPP	1/4" BSPP	CBI*-LJN-KCX
1 1/4" BSPP	1/4" BSPP	CBI*-LJN-KCY

The asterisk () shown in the fourth digit of the model code indicates the counterbalance pilot ratio of the cartridge and must be specified by customer. See page 50. Add modifier /S to order SG Iron for pressure rating over 210 bar.

The asterisk () shown in the fourth digit of the model code indicates the counterbalance pilot ratio of the cartridge and must be specified by customer. See page 50. Add modifier /S to order SG Iron for pressure rating over 210 bar.

NOTES: Page 50 for cartridge models CB**-* shows performance curves, technical tips, and options.
See page vii for technical information about line mount bodies including SAE flange pattern specifications.
Consult the Sun Factory for other port sizes available in the bodies shown above.
Model Codes printed in red are Preferred Products and are readily available.

Line Mounted Assemblies

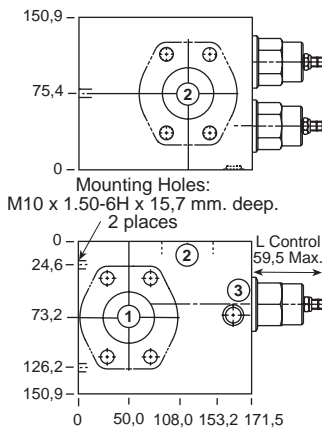
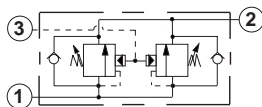
THREE PORT LOAD CONTROL APPLICATIONS (90 DEGREE 2.00" C61/C62 FLANGE PORT BODIES, 2 CAVITIES)

PILOT RATIO
3:1, 1.5:1, 2:1

Go to www.sunhydraulics.com
for more product information.

PILOT RATIO
2.3:1, 4.5:1, 10:1

0-960 L/min. Cavity T-19A



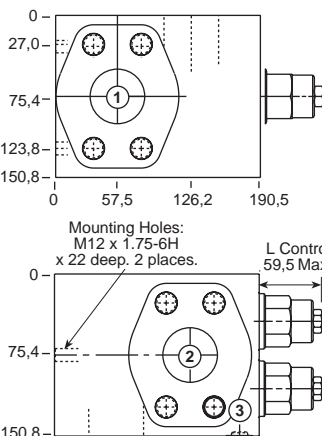
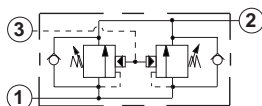
Ports 1 and 2	Port 3	Assembly Model Code*
2" SAE C61	1/4" BSPP	CBI*-LHN-XZZ/M

Ports 1 and 2	Port 3	Assembly Model Code*
2" SAE C61	1/4" BSPP	CBI*-LJN-XZZ/M

*Add modifier **/T** to order SG Iron for pressure rating over 210 bar.

*Add modifier **/T** to order SG Iron for pressure rating over 210 bar.

0-960 L/min. Cavity T-19A



Ports 1 and 2	Port 3	Assembly Model Code*
2" SAE C62	1/4" BSPP	CBI*-LHN-Z8Z/M

Ports 1 and 2	Port 3	Assembly Model Code*
2" SAE C62	1/4" BSPP	CBI*-LJN-Z8Z/M

*Add modifier **/T** to order SG Iron for pressure rating over 210 bar.

*Add modifier **/T** to order SG Iron for pressure rating over 210 bar.

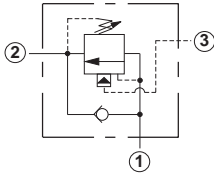
NOTES: Page 50 for cartridge models CB**-* shows performance curves, technical tips, and options.
See page vii for technical information about line mount bodies including SAE flange pattern specifications.
Consult the Sun Factory for other port sizes available in the bodies shown above.

THREE PORT LOAD CONTROL APPLICATIONS (INLINE BODIES)

PILOT RATIO
3:1, 1.5:1, 2:1

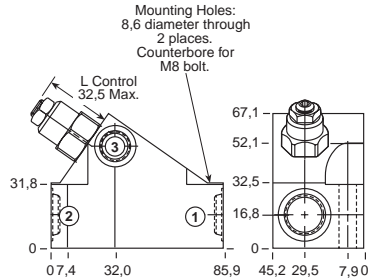
Go to www.sunhydraulics.com
for more product information.

PILOT RATIO
2.3:1, 4.5:1, 10:1



0-60 L/min. Cavity T-11A

Ports 1 and 2	Port 3	Assembly Model Code*
3/8" BSPP	1/4" BSPP	CBC*-LHN-EJU
1/2" BSPP	1/4" BSPP	CBC*-LHN-EJV

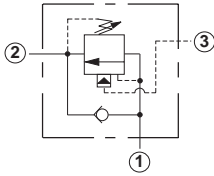


Ports 1 and 2	Port 3	Assembly Model Code*
3/8" BSPP	1/4" BSPP	CBC*-LJN-EJU
1/2" BSPP	1/4" BSPP	CBC*-LJN-EJV

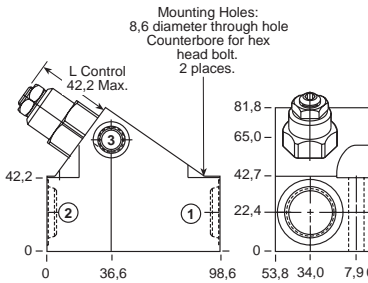
The asterisk () shown in the fourth digit of the model code indicates the counterbalance pilot ratio of the cartridge and must be specified by customer. See page 50. Add modifier /S to order SG Iron for pressure rating over 210 bar.

The asterisk () shown in the fourth digit of the model code indicates the counterbalance pilot ratio of the cartridge and must be specified by customer. See page 50. Add modifier /S to order SG Iron for pressure rating over 210 bar.

0-120 L/min. Cavity T-2A



Ports 1 and 2	Port 3	Assembly Model Code*
1/2" BSPP	1/4" BSPP	CBE*-LHN-BVV
3/4" BSPP	1/4" BSPP	CBE*-LHN-BVW

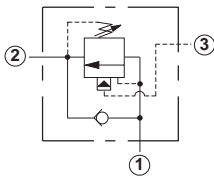


Ports 1 and 2	Port 3	Assembly Model Code*
1/2" BSPP	1/4" BSPP	CBE*-LJN-BVV
3/4" BSPP	1/4" BSPP	CBE*-LJN-BVW

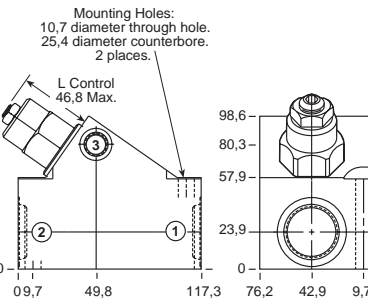
The asterisk () shown in the fourth digit of the model code indicates the counterbalance pilot ratio of the cartridge and must be specified by customer. See page 50. Add modifier /S to order SG Iron for pressure rating over 210 bar.

The asterisk () shown in the fourth digit of the model code indicates the counterbalance pilot ratio of the cartridge and must be specified by customer. See page 50. Add modifier /S to order SG Iron for pressure rating over 210 bar.

0-240 L/min. Cavity T-17A



Ports 1 and 2	Port 3	Assembly Model Code*
3/4" BSPP	1/4" BSPP	CBG*-LHN-HDW
1" BSPP	1/4" BSPP	CBG*-LHN-HDX



Ports 1 and 2	Port 3	Assembly Model Code*
3/4" BSPP	1/4" BSPP	CBG*-LJN-HDW
1" BSPP	1/4" BSPP	CBG*-LJN-HDX

The asterisk () shown in the fourth digit of the model code indicates the counterbalance pilot ratio of the cartridge and must be specified by customer. See page 50. Add modifier /S to order SG Iron for pressure rating over 210 bar.

The asterisk () shown in the fourth digit of the model code indicates the counterbalance pilot ratio of the cartridge and must be specified by customer. See page 50. Add modifier /S to order SG Iron for pressure rating over 210 bar.

NOTES: Page 50 for cartridge models CB**_*** shows performance curves, technical tips, and options.
See page vii for technical information about line mount bodies including SAE flange pattern specifications.
Consult the Sun Factory for other port sizes available in the bodies shown above.
Model Codes printed in red are Preferred Products and are readily available.

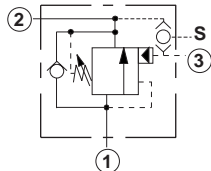
Line Mounted Assemblies

THREE PORT LOAD CONTROL APPLICATIONS (90 DEGREE BODIES WITH SHUTTLE)

PILOT RATIO
3:1, 1.5:1, 2:1

Go to www.sunhydraulics.com
for more product information.

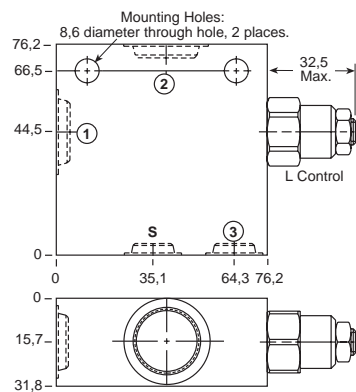
PILOT RATIO
2.3:1, 4.5:1, 10:1



Ports 1 and 2	Port Shuttle and 3	Assembly Model Code*
3/8" BSPP	1/4" BSPP	CBC*-LHN-EGU
1/2" BSPP	1/4" BSPP	CBC*-LHN-EGV

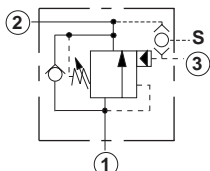
The asterisk () shown in the fourth digit of the model code indicates the counterbalance pilot ratio of the cartridge and must be specified by customer. See page 50. Add modifier /S to order SG Iron for pressure rating over 210 bar.

0-60 L/min. Cavity T-11A



Ports 1 and 2	Port Shuttle and 3	Assembly Model Code*
3/8" BSPP	1/4" BSPP	CBC*-LJN-EGU
1/2" BSPP	1/4" BSPP	CBC*-LJN-EGV

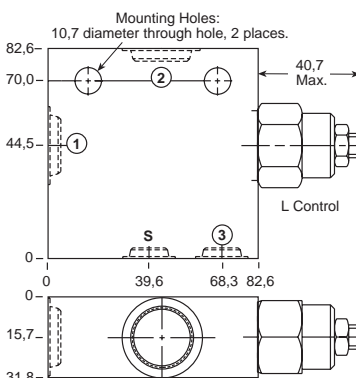
The asterisk () shown in the fourth digit of the model code indicates the counterbalance pilot ratio of the cartridge and must be specified by customer. See page 50. Add modifier /S to order SG Iron for pressure rating over 210 bar.



Ports 1 and 2	Port Shuttle and 3	Assembly Model Code*
1/2" BSPP	1/4" BSPP	CBE*-LHN-BGV
3/4" BSPP	1/4" BSPP	CBE*-LHN-BGV

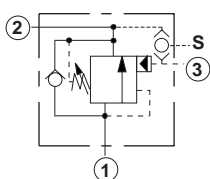
The asterisk () shown in the fourth digit of the model code indicates the counterbalance pilot ratio of the cartridge and must be specified by customer. See page 50. Add modifier /S to order SG Iron for pressure rating over 210 bar.

0-120 L/min. Cavity T-2A



Ports 1 and 2	Port Shuttle and 3	Assembly Model Code*
1/2" BSPP	1/4" BSPP	CBE*-LJN-BGV
3/4" BSPP	1/4" BSPP	CBE*-LJN-BGV

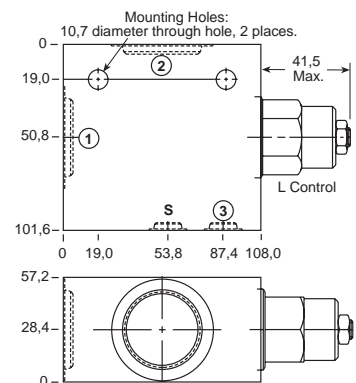
The asterisk () shown in the fourth digit of the model code indicates the counterbalance pilot ratio of the cartridge and must be specified by customer. See page 50. Add modifier /S to order SG Iron for pressure rating over 210 bar.



Ports 1 and 2	Port Shuttle and 3	Assembly Model Code*
1" BSPP	1/4" BSPP	CBG*-LHN-HGX
1 1/4" BSPP	1/4" BSPP	CBG*-LHN-HGY

The asterisk () shown in the fourth digit of the model code indicates the counterbalance pilot ratio of the cartridge and must be specified by customer. See page 50. Add modifier /S to order SG Iron for pressure rating over 210 bar.

0-240 L/min. Cavity T-17A



Ports 1 and 2	Port Shuttle and 3	Assembly Model Code*
1" BSPP	1/4" BSPP	CBG*-LJN-HGX
1 1/4" BSPP	1/4" BSPP	CBG*-LJN-HGY

The asterisk () shown in the fourth digit of the model code indicates the counterbalance pilot ratio of the cartridge and must be specified by customer. See page 50. Add modifier /S to order SG Iron for pressure rating over 210 bar.

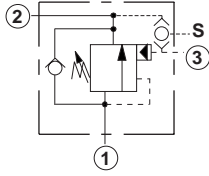
NOTES: Page 50 for cartridge models CB**-* shows performance curves, technical tips, and options.
See page vii for technical information about line mount bodies including SAE flange pattern specifications.
Consult the Sun Factory for other port sizes available in the bodies shown above.

THREE PORT LOAD CONTROL APPLICATIONS (90 DEGREE 1.50" SAE FLANGE PORT C61/C62 BODIES WITH SHUTTLE)

PILOT RATIO
3:1, 1.5:1, 2:1

Go to www.sunhydraulics.com
for more product information.

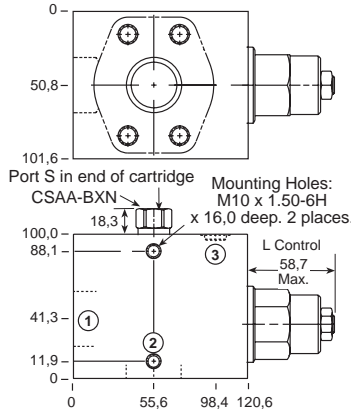
PILOT RATIO
2.3:1, 4.5:1, 10:1



Ports 1 and 2	Port Shuttle and 3	Assembly Model Code*
1 1/2" SAE C61	1/4" BSPP	CBI*-LHN-KGR/M

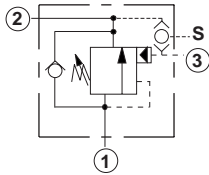
*Add modifier **/T** to order SG Iron for pressure rating over 210 bar.

0-480 L/min. Cavity T-19A



Ports 1 and 2	Port Shuttle and 3	Assembly Model Code*
1 1/2" SAE C61	1/4" BSPP	CBI*-LJN-KGR/M

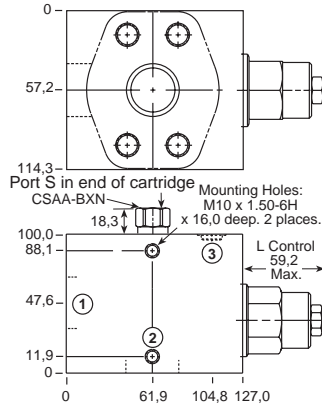
*Add modifier **/T** to order SG Iron for pressure rating over 210 bar.



Ports 1 and 2	Port Shuttle and 3	Assembly Model Code*
1 1/2" SAE C62	1/4" BSPP	CBI*-LHN-KG6/M

*Add modifier **/T** to order SG Iron for pressure rating over 210 bar.

0-480 L/min. Cavity T-19A



Ports 1 and 2	Port Shuttle and 3	Assembly Model Code*
1 1/2" SAE C62	1/4" BSPP	CBI*-LJN-KG6/M

*Add modifier **/T** to order SG Iron for pressure rating over 210 bar.

NOTES: Page 50 for cartridge models CB**-* shows performance curves, technical tips, and options.
See page vii for technical information about line mount bodies including SAE flange pattern specifications.
Consult the Sun Factory for other port sizes available in the bodies shown above.

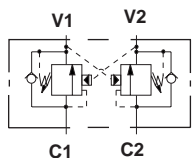
Line Mounted Assemblies

THREE PORT LOAD CONTROL APPLICATIONS (90 DEGREE CROSS-PILOTED BODIES, 2 CAVITIES)

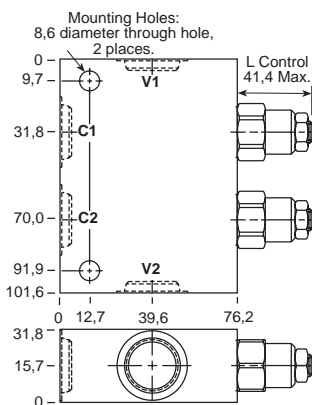
PILOT RATIO
3:1, 1.5:1, 2:1

Go to www.sunhydraulics.com
for more product information.

PILOT RATIO
2.3:1, 4.5:1, 10:1



0-60 L/min. Cavity T-11A

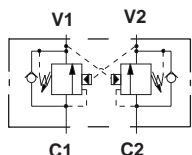


Ports C1, C2, V1 & V2	Assembly Model Code*
3/8" BSPP	CBC*-LHN-YEU
1/2" BSPP	CBC*-LHN-YEV

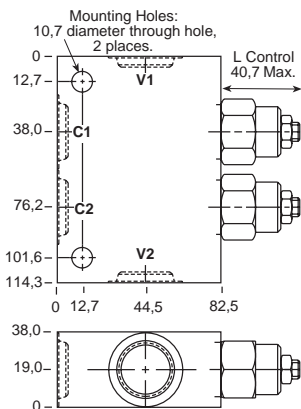
Ports C1, C2, V1 & V2	Assembly Model Code*
3/8" BSPP	CBC*-LJN-YEU
1/2" BSPP	CBC*-LJN-YEV

The asterisk () shown in the fourth digit of the model code indicates the counterbalance pilot ratio of the cartridge and must be specified by customer. See page 50. Add modifier /S to order SG Iron for pressure rating over 210 bar.

The asterisk () shown in the fourth digit of the model code indicates the counterbalance pilot ratio of the cartridge and must be specified by customer. See page 50. Add modifier /S to order SG Iron for pressure rating over 210 bar.



0-120 L/min. Cavity T-2A

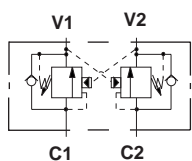


Ports C1, C2, V1 & V2	Assembly Model Code*
3/8" BSPP	CBE*-LHN-YAU
1/2" BSPP	CBE*-LHN-YAV

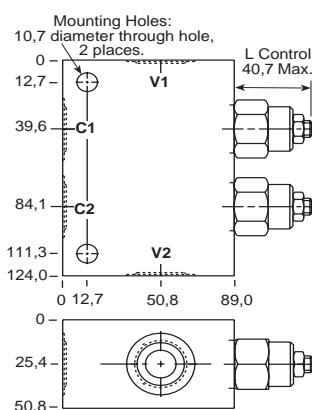
Ports C1, C2, V1 & V2	Assembly Model Code*
3/8" BSPP	CBE*-LJN-YAU
1/2" BSPP	CBE*-LJN-YAV

The asterisk () shown in the fourth digit of the model code indicates the counterbalance pilot ratio of the cartridge and must be specified by customer. See page 50. Add modifier /S to order SG Iron for pressure rating over 210 bar.

The asterisk () shown in the fourth digit of the model code indicates the counterbalance pilot ratio of the cartridge and must be specified by customer. See page 50. Add modifier /S to order SG Iron for pressure rating over 210 bar.



0-120 L/min. Cavity T-2A



Ports C1, C2, V1 & V2	Assembly Model Code*
3/4" BSPP	CBE*-LHN-YAW

Ports C1, C2, V1 & V2	Assembly Model Code*
3/4" BSPP	CBE*-LJN-YAW

The asterisk () shown in the fourth digit of the model code indicates the counterbalance pilot ratio of the cartridge and must be specified by customer. See page 50. Add modifier /S to order SG Iron for pressure rating over 210 bar.

The asterisk () shown in the fourth digit of the model code indicates the counterbalance pilot ratio of the cartridge and must be specified by customer. See page 50. Add modifier /S to order SG Iron for pressure rating over 210 bar.

NOTES: Page 50 for cartridge model CB*-*** shows performance curves, technical tips, and options.
See page vii for technical information about line mount bodies including SAE flange pattern specifications.
Consult the Sun Factory for other port sizes available in the bodies shown above.
Model Codes printed in red are Preferred Products and are readily available.

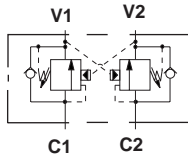
**THREE PORT LOAD CONTROL APPLICATIONS
(90 DEGREE CROSS-PILOTED, 1.50" SAE C61/C62 FLANGE PORT BODIES, 2 CAVITIES)**

**PILOT RATIO
3:1, 1.5:1, 2:1**

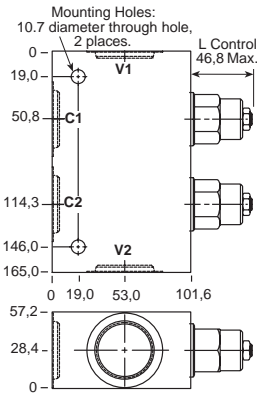
Go to www.sunhydraulics.com
for more product information.

**PILOT RATIO
2.3:1, 4.5:1, 10:1**

0-240 L/min. Cavity T-17A



Ports	Assembly Model Code*
C1, C2, V1 & V2	
1" BSPP	CBG*-LHN-YJX
1 1/4" BSPP	CBG*-LHN-YJY

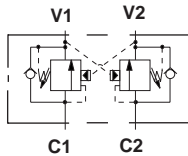


Ports	Assembly Model Code*
C1, C2, V1 & V2	
1" BSPP	CBG*-LJN-YJX
1 1/4" BSPP	CBG*-LJN-YJY

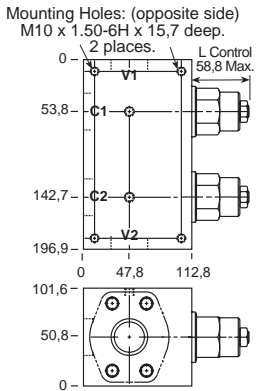
The asterisk () shown in the fourth digit of the model code indicates the counterbalance pilot ratio of the cartridge and must be specified by customer. See page 50. Add modifier /S to order SG Iron for pressure rating over 210 bar.

The asterisk () shown in the fourth digit of the model code indicates the counterbalance pilot ratio of the cartridge and must be specified by customer. See page 50. Add modifier /S to order SG Iron for pressure rating over 210 bar.

0-480 L/min. Cavity T-19A



Ports	Assembly Model Code*
C1, C2, V1 & V2	
1 1/2" SAE C61	CBI*-LHN-YMR/M

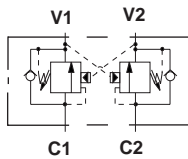


Ports	Assembly Model Code*
C1, C2, V1 & V2	
1 1/2" SAE C61	CBI*-LJN-YMR/M

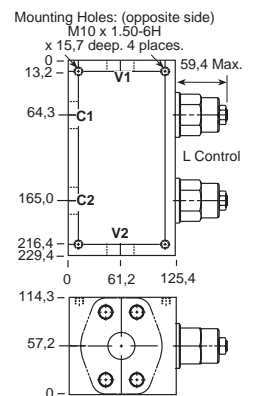
*Add modifier /T to order SG Iron for pressure rating over 210 bar.

*Add modifier /T to order SG Iron for pressure rating over 210 bar.

0-480 L/min. Cavity T-19A



Ports	Assembly Model Code*
C1, C2, V1 & V2	
1 1/2" SAE C62	CBI*-LHN-YM6/M



Ports	Assembly Model Code*
C1, C2, V1 & V2	
1 1/2" SAE C62	CBI*-LJN-YM6/M

*Add modifier /T to order SG Iron for pressure rating over 210 bar.

*Add modifier /T to order SG Iron for pressure rating over 210 bar.

NOTES: Page 50 for cartridge model CB**.* shows performance curves, technical tips, and options. See page vii for technical information about line mount bodies including SAE flange pattern specifications. Consult the Sun Factory for other port sizes available in the bodies shown above.
Model Codes printed in red are Preferred Products and are readily available.

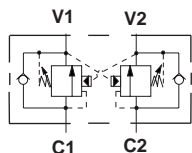
Line Mounted Assemblies

THREE PORT LOAD CONTROL APPLICATIONS (INLINE/INLINE CROSS-PILOTED, 1.50" SAE C61 FLANGE PORT BODIES, 2 CAVITIES)

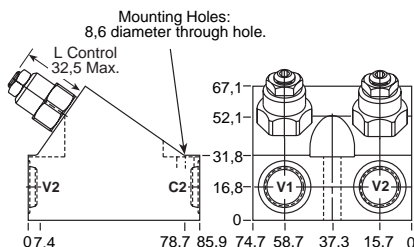
PILOT RATIO
3:1, 1.5:1, 2:1

Go to www.sunhydraulics.com
for more product information.

PILOT RATIO
2.3:1, 4.5:1, 10:1



0-60 L/min. Cavity T-11A

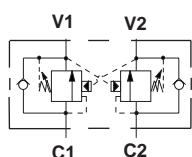


Ports C1, C2, V1 & V2	Assembly Model Code*
3/8" BSPP	CBC*-LHN-XEU
1/2" BSPP	CBC*-LHN-XEV

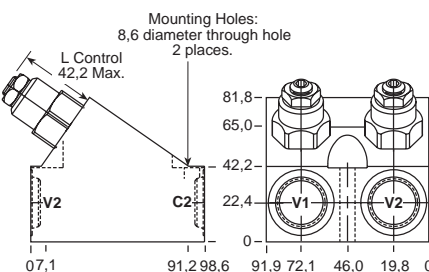
The asterisk () shown in the fourth digit of the model code indicates the counterbalance pilot ratio of the cartridge and must be specified by customer. See page 50. Add modifier /S to order SG Iron for pressure rating over 210 bar.

Ports C1, C2, V1 & V2	Assembly Model Code*
3/8" BSPP	CBC*-LJN-XEU
1/2" BSPP	CBC*-LJN-XEV

The asterisk () shown in the fourth digit of the model code indicates the counterbalance pilot ratio of the cartridge and must be specified by customer. See page 50. Add modifier /S to order SG Iron for pressure rating over 210 bar.



0-120 L/min. Cavity T-2A

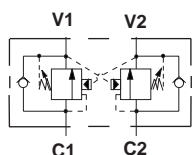


Ports C1, C2, V1 & V2	Assembly Model Code*
1/2" BSPP	CBE*-LHN-XAV
3/4" BSPP	CBE*-LHN-XAW

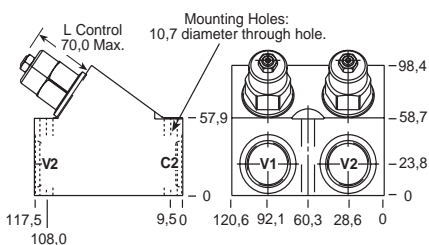
The asterisk () shown in the fourth digit of the model code indicates the counterbalance pilot ratio of the cartridge and must be specified by customer. See page 50. Add modifier /S to order SG Iron for pressure rating over 210 bar.

Ports C1, C2, V1 & V2	Assembly Model Code*
1/2" BSPP	CBE*-LJN-XAV
3/4" BSPP	CBE*-LJN-XAW

The asterisk () shown in the fourth digit of the model code indicates the counterbalance pilot ratio of the cartridge and must be specified by customer. See page 50. Add modifier /S to order SG Iron for pressure rating over 210 bar.



0-240 L/min. Cavity T-17A

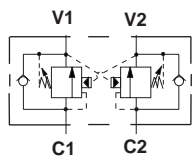


Ports C1, C2, V1 & V2	Assembly Model Code*
3/4" BSPP	CBG*-LHN-XJW
1" BSPP	CBG*-LHN-XJX

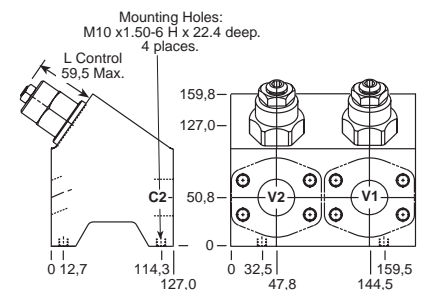
The asterisk () shown in the fourth digit of the model code indicates the counterbalance pilot ratio of the cartridge and must be specified by customer. See page 50. Add modifier /S to order SG Iron for pressure rating over 210 bar.

Ports C1, C2, V1 & V2	Assembly Model Code*
3/4" BSPP	CBG*-LJN-XJW
1" BSPP	CBG*-LJN-XJX

The asterisk () shown in the fourth digit of the model code indicates the counterbalance pilot ratio of the cartridge and must be specified by customer. See page 50. Add modifier /S to order SG Iron for pressure rating over 210 bar.



0-480 L/min. Cavity T-19A



Ports C1, C2, V1 & V2	Assembly Model Code*
1 1/2" SAE C61	CBI*-LHN-XZP/M

*Add modifier /T to order SG Iron for pressure rating over 210 bar.

Ports C1, C2, V1 & V2	Assembly Model Code*
1 1/2" SAE C61	CBI*-LJN-XZP/M

*Add modifier /T to order SG Iron for pressure rating over 210 bar.

NOTES: Page 50 for cartridge model CB*-*** shows performance curves, technical tips, and options.
See page vii for technical information about line mount bodies including SAE flange pattern specifications.
Consult the Sun Factory for other port sizes available in the bodies shown above.
Model Codes printed in red are Preferred Products and are readily available.

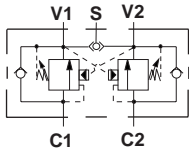
THREE PORT LOAD CONTROL APPLICATIONS (90 DEGREE CROSS-PILOTED BODIES WITH SHUTTLE, 2 CAVITIES)

PILOT RATIO
3:1, 1.5:1, 2:1

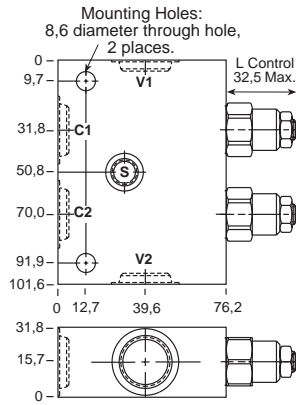
Go to www.sunhydraulics.com
for more product information.

PILOT RATIO
2.3:1, 4.5:1, 10:1

0-60 L/min. Cavity T-11A



Ports C1, C2, V1, V2	Shuttle Port	Assembly Model Code*
3/8" BSPP	1/4" BSPP	CBC*-LHN-YGU
1/2" BSPP	1/4" BSPP	CBC*-LHN-YGV

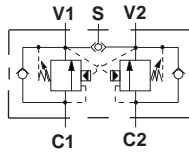


Ports C1, C2, V1, V2	Shuttle Port	Assembly Model Code*
3/8" BSPP	1/4" BSPP	CBC*-LJN-YGU
1/2" BSPP	1/4" BSPP	CBC*-LJN-YGV

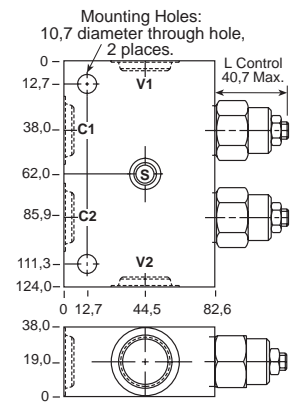
The asterisk () shown in the fourth digit of the model code indicates the counterbalance pilot ratio of the cartridge and must be specified by customer. See page 50. Add modifier /S to order SG Iron for pressure rating over 210 bar.

The asterisk () shown in the fourth digit of the model code indicates the counterbalance pilot ratio of the cartridge and must be specified by customer. See page 50. Add modifier /S to order SG Iron for pressure rating over 210 bar.

0-120 L/min. Cavity T-2A



Ports C1, C2, V1, V2	Shuttle Port	Assembly Model Code*
1/2" BSPP	1/4" BSPP	CBE*-LHN-YHV
3/4" BSPP	1/4" BSPP	CBE*-LHN-YHW

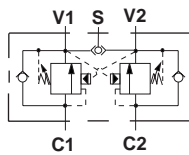


Ports C1, C2, V1, V2	Shuttle Port	Assembly Model Code*
1/2" BSPP	1/4" BSPP	CBE*-LJN-YHV
3/4" BSPP	1/4" BSPP	CBE*-LJN-YHW

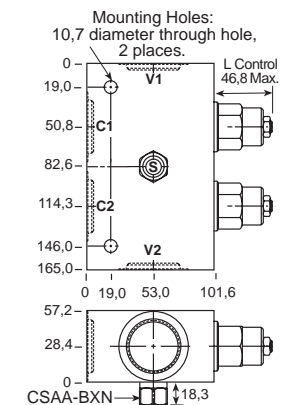
The asterisk () shown in the fourth digit of the model code indicates the counterbalance pilot ratio of the cartridge and must be specified by customer. See page 50. Add modifier /S to order SG Iron for pressure rating over 210 bar.

The asterisk () shown in the fourth digit of the model code indicates the counterbalance pilot ratio of the cartridge and must be specified by customer. See page 50. Add modifier /S to order SG Iron for pressure rating over 210 bar.

0-240 L/min. Cavity T-17A



Ports C1, C2, V1, V2	Shuttle Port	Assembly Model Code*
1" BSPP	1/4" BSPP	CBG*-LHN-YKX
1 1/4" BSPP	1/4" BSPP	CBG*-LHN-YKY



Ports C1, C2, V1, V2	Shuttle Port	Assembly Model Code*
1" BSPP	1/4" BSPP	CBG*-LJN-YKX
1 1/4" BSPP	1/4" BSPP	CBG*-LJN-YKY

The asterisk () shown in the fourth digit of the model code indicates the counterbalance pilot ratio of the cartridge and must be specified by customer. See page 50. Add modifier /S to order SG Iron for pressure rating over 210 bar.

The asterisk () shown in the fourth digit of the model code indicates the counterbalance pilot ratio of the cartridge and must be specified by customer. See page 50. Add modifier /S to order SG Iron for pressure rating over 210 bar.

NOTES: Page 50 for cartridge models CB**-* shows performance curves, technical tips, and options. See page vii for technical information about line mount bodies including SAE flange information and specifications. Consult the Sun Factory for other port sizes available in the bodies shown above.

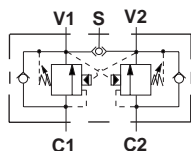
Line Mounted Assemblies

THREE PORT LOAD CONTROL APPLICATIONS (CROSS-PILOTED 1.50" SAE C61/C62 FLANGE PORT BODIES WITH SHUTTLE, 2 CAVITIES)

PILOT RATIO
3:1, 1.5:1, 2:1

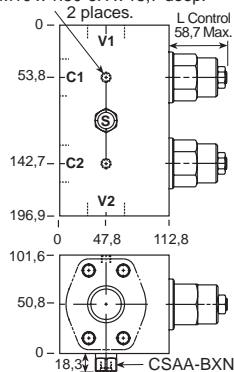
Go to www.sunhydraulics.com
for more product information.

PILOT RATIO
2.3:1, 4.5:1, 10:1



0-480 L/min. Cavity T-19A

Mounting Holes: (opposite side)
M10 x 1.50-6H x 15,7 deep.



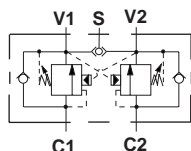
Ports	Shuttle Port	Assembly Model Code*
C1, C2, V1, V2	1/4" BSPP	CBI*-LHN-YNR/M
		1 1/2" SAE C61

Ports	Shuttle Port	Assembly Model Code*
C1, C2, V1, V2	1/4" BSPP	CBI*-LJN-YNR/M
		1 1/2" SAE C61

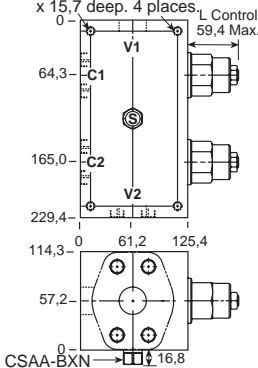
*Add modifier **/T** to order SG Iron for pressure rating over 210 bar.

*Add modifier **/T** to order SG Iron for pressure rating over 210 bar.

0-480 L/min. Cavity T-19A



Mounting Holes:
(opposite side) M10 x 1.50-6H
x 15,7 deep. 4 places.



Ports	Shuttle Port	Assembly Model Code*
C1, C2, V1, V2	1/4" BSPP	CBI*-LHN-YN6/M
		1 1/2" SAE C62

Ports	Shuttle Port	Assembly Model Code*
C1, C2, V1, V2	1/4" BSPP	CBI*-LJN-YN6/M
		1 1/2" SAE C62

*Add modifier **/T** to order SG Iron for pressure rating over 210 bar.

*Add modifier **/T** to order SG Iron for pressure rating over 210 bar.

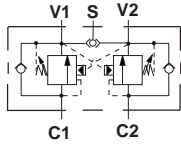
NOTES: Page 50 for cartridge models CB**-* shows performance curves, technical tips, and options.
See page vii for technical information about line mount bodies including SAE flange information and pattern specifications.
Consult the Sun Factory for other port sizes available in the bodies shown above.

THREE PORT LOAD CONTROL APPLICATIONS (INLINE CROSS-PILOTED BODIES WITH SHUTTLE, 2 CAVITIES)

PILOT RATIO
3:1, 1.5:1, 2:1

Go to www.sunhydraulics.com
for more product information.

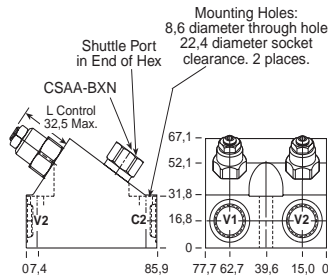
PILOT RATIO
2.3:1, 4.5:1, 10:1



Ports C1, C2, V1, V2	Shuttle Port	Assembly Model Code*
3/8" BSPP	1/4" BSPP	CBC*-LHN-XGU

The asterisk () shown in the fourth digit of the model code indicates the counterbalance pilot ratio of the cartridge and must be specified by customer. See page 50. Add modifier /S to order SG Iron for pressure rating over 210 bar.

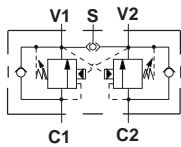
0-60 L/min. Cavity T-11A



Ports C1, C2, V1, V2	Shuttle Port	Assembly Model Code*
3/8" BSPP	1/4" BSPP	CBC*-LJN-XGU

The asterisk () shown in the fourth digit of the model code indicates the counterbalance pilot ratio of the cartridge and must be specified by customer. See page 50. Add modifier /S to order SG Iron for pressure rating over 210 bar.

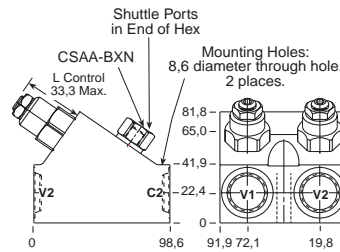
0-120 L/min. Cavity T-2A



Ports C1, C2, V1, V2	Shuttle Port	Assembly Model Code*
1/2" BSPP	1/4" BSPP	CBE*-LHN-XHV
3/4" BSPP	1/4" BSPP	CBE*-LHN-XHW

The asterisk () shown in the fourth digit of the model code indicates the counterbalance pilot ratio of the cartridge and must be specified by customer. See page 50. Add modifier /S to order SG Iron for pressure rating over 210 bar.

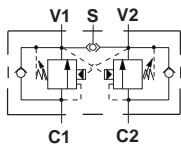
0-120 L/min. Cavity T-2A



Ports C1, C2, V1, V2	Shuttle Port	Assembly Model Code*
1/2" BSPP	1/4" BSPP	CBE*-LJN-XHV
3/4" BSPP	1/4" BSPP	CBE*-LJN-XHW

The asterisk () shown in the fourth digit of the model code indicates the counterbalance pilot ratio of the cartridge and must be specified by customer. See page 50. Add modifier /S to order SG Iron for pressure rating over 210 bar.

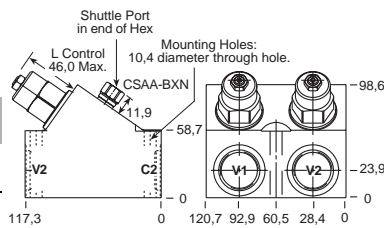
0-240 L/min. Cavity T-17A



Ports C1, C2, V1, V2	Shuttle Port	Assembly Model Code*
3/4" BSPP	1/4" BSPP	CBE*-LHN-XKW
1" BSPP	1/4" BSPP	CBE*-LHN-XKY

The asterisk () shown in the fourth digit of the model code indicates the counterbalance pilot ratio of the cartridge and must be specified by customer. See page 50. Add modifier /S to order SG Iron for pressure rating over 210 bar.

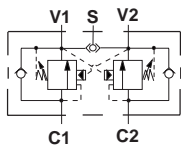
0-240 L/min. Cavity T-17A



Ports C1, C2, V1, V2	Shuttle Port	Assembly Model Code*
3/4" BSPP	1/4" BSPP	CBE*-LJN-XKW
1" BSPP	1/4" BSPP	CBE*-LJN-XKY

The asterisk () shown in the fourth digit of the model code indicates the counterbalance pilot ratio of the cartridge and must be specified by customer. See page 50. Add modifier /S to order SG Iron for pressure rating over 210 bar.

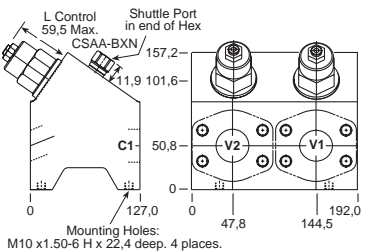
0-480 L/min. Cavity T-19A



Ports 1 and 2	Shuttle Port	Assembly Model Code*
1 1/2" SAE C61	1/4" BSPP	CBI*-LHN-XZQ/M

*Add modifier /T to order SG Iron for pressure rating over 210 bar.

0-480 L/min. Cavity T-19A



Ports C1, C2, V1, V2	Shuttle Port	Assembly Model Code*
1 1/2" SAE C61	1/4" BSPP	CBI*-LJN-XZQ/M

NOTES: Page 50 for cartridge models CB**-* shows performance curves, technical tips, and options. See page vii for technical information about line mount bodies including SAE flange pattern specifications. Consult the Sun Factory for other port sizes available in the bodies shown above.

Line Mounted Assemblies

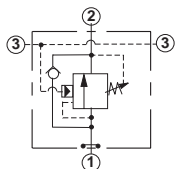
THREE PORT LOAD CONTROL APPLICATIONS (DIRECT MOUNT .75"/1.00"/1.25" SAE C61 FLANGE PORT BODIES, THROUGH PILOT)

The direct mounted SAE flange port bodies provide the opportunity to mount load control valves directly onto the ports of an actuator.

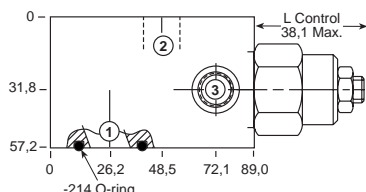
PILOT RATIO
3:1, 1.5:1, 2:1

Go to www.sunhydraulics.com
for more product information.

PILOT RATIO
2.3:1, 4.5:1, 10:1



0-120 L/min. Cavity T-2A

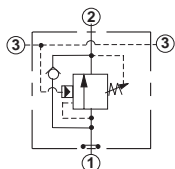


Ports 1 and 2	Port 3	Assembly Model Code*
3/4" SAE C61	1/4" BSPP	CBE*-LHN-ZNV/M

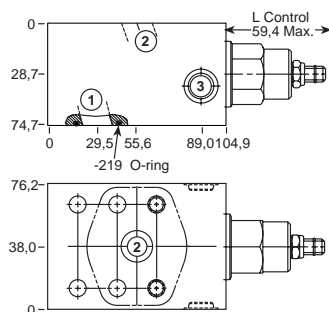
Ports 1 and 2	Port 3	Assembly Model Code*
3/4" SAE C61	1/4" BSPP	CBE*-LJN-ZNV/M

*Add modifier **/T** to order SG Iron for pressure rating over 210 bar.

*Add modifier **/T** to order SG Iron for pressure rating over 210 bar.



0-240 L/min. Cavity T-17A

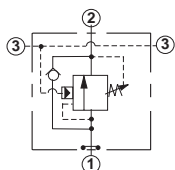


Ports 1 and 2	Port 3	Assembly Model Code*
1" SAE C61	1/4" BSPP	CBG*-LHN-ZNV/M

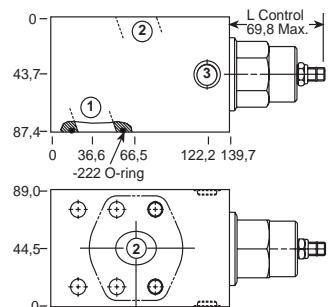
Ports 1 and 2	Port 3	Assembly Model Code*
1" SAE C61	1/4" BSPP	CBG*-LJN-ZNV/M

*Add modifier **/T** to order SG Iron for pressure rating over 210 bar.

*Add modifier **/T** to order SG Iron for pressure rating over 210 bar.



0-480 L/min. Cavity T-19A



Ports 1 and 2	Port 3	Assembly Model Code*
1 1/4" SAE C61	1/4" BSPP	CBI*-LHN-ZNX/M

Ports 1 and 2	Port 3	Assembly Model Code*
1 1/4" SAE C61	1/4" BSPP	CBI*-LJN-ZNX/M

*Add modifier **/T** to order SG Iron for pressure rating over 210 bar.

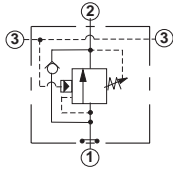
*Add modifier **/T** to order SG Iron for pressure rating over 210 bar.

NOTES: Page 50 for cartridge models CB**-* shows performance curves, technical tips, and options.
See page vii for technical information about line mount bodies including SAE flange pattern specifications.
Consult the Sun Factory for other port sizes available in the bodies shown above.

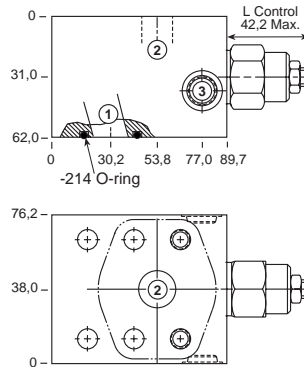
THREE PORT LOAD CONTROL APPLICATIONS (DIRECT MOUNT .75"/1.00"/1.25" SAE C62 FLANGE BODIES, THROUGH PILOT)

The direct mounted SAE flange port bodies provide the opportunity to mount load control valves directly onto the ports of an actuator.

PILOT RATIO
3:1, 1.5:1; 2:1
Go to www.sunhydraulics.com
for more product information.
PILOT RATIO
2.3:1, 4.5:1, 10:1



0-120 L/min. Cavity T-2A



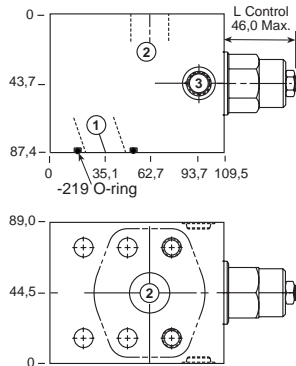
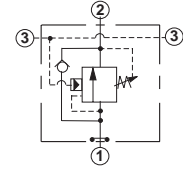
Ports 1 and 2	Port 3	Assembly Model Code*
3/4" SAE C62	1/4" BSPP	CBE*-LHN-ZDS/M

Ports 1 and 2	Port 3	Assembly Model Code*
3/4" SAE C62	1/4" BSPP	CBE*-LJN-ZDS/M

*Add modifier **/T** to order SG Iron for pressure rating over 210 bar.

*Add modifier **/T** to order SG Iron for pressure rating over 210 bar.

0-240 L/min. Cavity T-17A



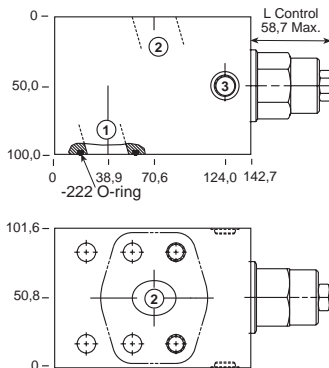
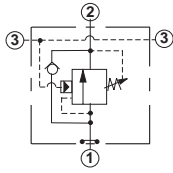
Ports 1 and 2	Port 3	Assembly Model Code*
1" SAE C62	1/4" BSPP	CBG*-LHN-ZDR/M

Ports 1 and 2	Port 3	Assembly Model Code*
1" SAE C62	1/4" BSPP	CBG*-LJN-ZDR/M

*Add modifier **/T** to order SG Iron for pressure rating over 210 bar.

*Add modifier **/T** to order SG Iron for pressure rating over 210 bar.

0-480 L/min. Cavity T-19A



Ports 1 and 2	Port 3	Assembly Model Code*
1 1/4" SAE C62	1/4" BSPP	CBI*-LHN-ZFD/M

Ports 1 and 2	Port 3	Assembly Model Code*
1 1/4" SAE C62	1/4" BSPP	CBI*-LJN-ZFD/M

*Add modifier **/T** to order SG Iron for pressure rating over 210 bar.

*Add modifier **/T** to order SG Iron for pressure rating over 210 bar.

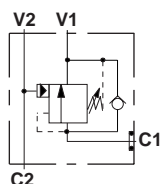
NOTES: Page 50 for cartridge models CB**-* shows performance curves, technical tips, and options.
See page vii for technical information about line mount bodies including SAE flange pattern specifications.
Consult the Sun Factory for other port sizes available in the bodies shown above.

Line Mounted Assemblies

THREE PORT LOAD CONTROL APPLICATIONS
(GASKET MOUNT BODIES)

These compact gasket-mounted bodies provide the opportunity to mount load control valves directly onto the ports of an actuator.

PILOT RATIO
3:1, 1.5:1, 2:1



Ports
C2, V1 & V2

3/8" BSPP

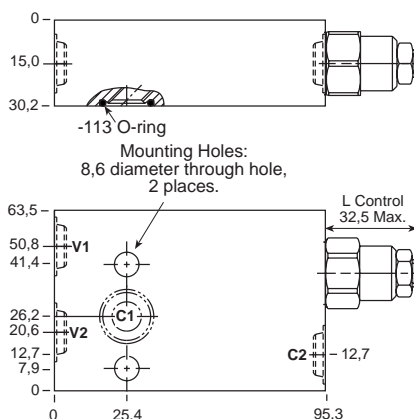
Assembly
Model Code*

CBC*-LHN-ZTD

The asterisk () shown in the fourth digit of the model code indicates the counterbalance pilot ratio of the cartridge and must be specified by customer. See page 50. Add modifier /S to order SG Iron for pressure rating over 210 bar.

Go to www.sunhydraulics.com
for more product information.

0-60 L/min. Cavity T-11A



PILOT RATIO
2.3:1, 4.5:1, 10:1

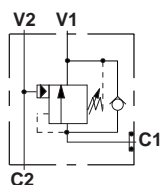
Ports
C2, V1 & V2

3/8" BSPP

Assembly
Model Code*

CBC*-LJN-ZTD

The asterisk () shown in the fourth digit of the model code indicates the counterbalance pilot ratio of the cartridge and must be specified by customer. See page 50. Add modifier /S to order SG Iron for pressure rating over 210 bar.



Ports
C2, V1 & V2

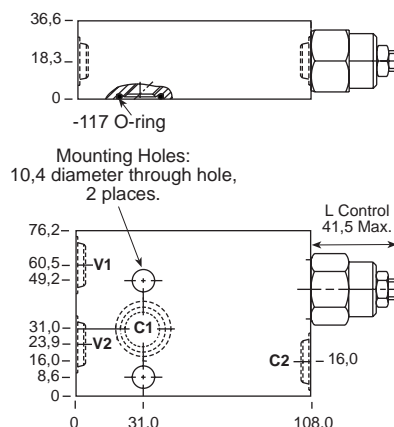
1/2" BSPP

Assembly
Model Code*

CBE*-LHN-ZTH

The asterisk () shown in the fourth digit of the model code indicates the counterbalance pilot ratio of the cartridge and must be specified by customer. See page 50. Add modifier /S to order SG Iron for pressure rating over 210 bar.

0-120 L/min. Cavity T-2A



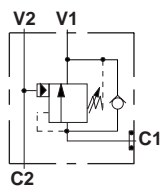
Ports
C2, V1 & V2

1/2" BSPP

Assembly
Model Code*

CBE*-LJN-ZTH

The asterisk () shown in the fourth digit of the model code indicates the counterbalance pilot ratio of the cartridge and must be specified by customer. See page 50. Add modifier /S to order SG Iron for pressure rating over 210 bar.



Ports
C2, V1 & V2

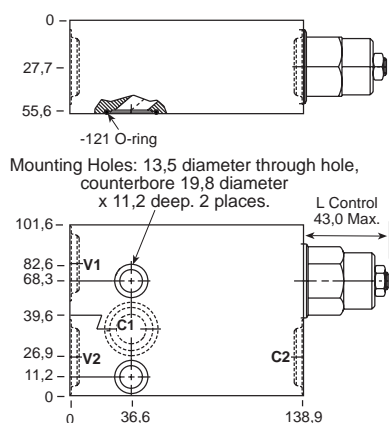
3/4" BSPP

Assembly
Model Code*

CBG*-LHN-ZTL

The asterisk () shown in the fourth digit of the model code indicates the counterbalance pilot ratio of the cartridge and must be specified by customer. See page 50. Add modifier /S to order SG Iron for pressure rating over 210 bar.

0-240 L/min. Cavity T-17A



Ports
C2, V1 & V2

3/4" BSPP

Assembly
Model Code*

CBG*-LJN-ZTL

The asterisk () shown in the fourth digit of the model code indicates the counterbalance pilot ratio of the cartridge and must be specified by customer. See page 50. Add modifier /S to order SG Iron for pressure rating over 210 bar.

NOTES: Page 50 for cartridge model CB**-* shows performance curves, technical tips, and options.
See page vii for technical information about line mount bodies including SAE flange pattern specifications.
Consult the Sun Factory for other port sizes available in the bodies shown above.

Model Codes printed in red are Preferred Products and are readily available.

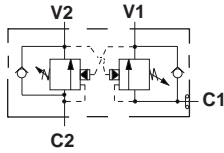
THREE PORT LOAD CONTROL APPLICATIONS (GASKET MOUNT BODIES, 2 CAVITIES)

These compact gasket-mounted bodies provide the opportunity to mount load control valves directly onto the ports of an actuator.

PILOT RATIO
3:1, 1.5:1

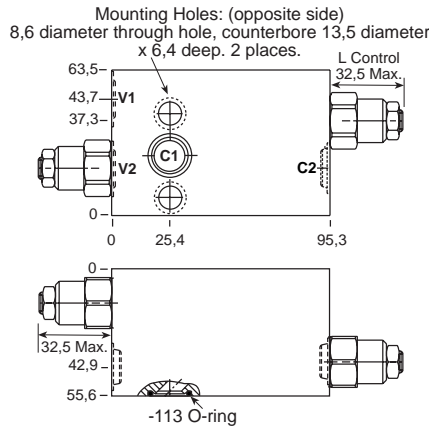
Go to www.sunhydraulics.com
for more product information.

PILOT RATIO
2.3:1, 4.5:1, 10:1



Ports
C2, V1 & V2
Assembly Model Code*
3/8" BSPP **CBC*-LHN-YVX**

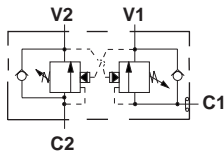
0-60 L/min. Cavity T-11A



Ports
C2, V1 & V2
Assembly Model Code*
3/8" BSPP **CBC*-LJN-YVX**

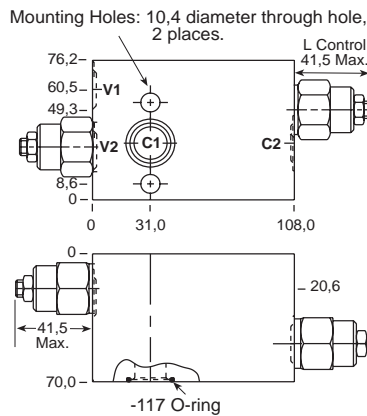
The asterisk () shown in the fourth digit of the model code indicates the counterbalance pilot ratio of the cartridge and must be specified by customer. See page 50. Add modifier /S to order SG Iron for pressure rating over 210 bar.

The asterisk () shown in the fourth digit of the model code indicates the counterbalance pilot ratio of the cartridge and must be specified by customer. See page 50. Add modifier /S to order SG Iron for pressure rating over 210 bar.



Ports
C2, V1 & V2
Assembly Model Code*
1/2" BSPP **CBE*-LHN-YVU**

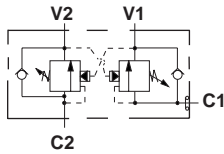
0-120 L/min. Cavity T-2A



Ports
C2, V1 & V2
Assembly Model Code*
1/2" BSPP **CBE*-LJN-YVU**

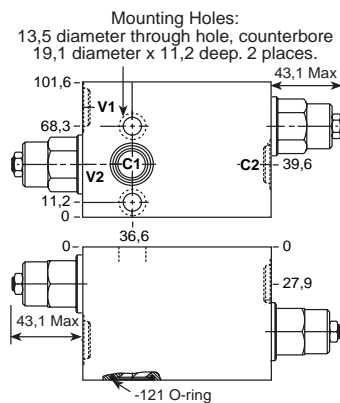
The asterisk () shown in the fourth digit of the model code indicates the counterbalance pilot ratio of the cartridge and must be specified by customer. See page 50. Add modifier /S to order SG Iron for pressure rating over 210 bar.

The asterisk () shown in the fourth digit of the model code indicates the counterbalance pilot ratio of the cartridge and must be specified by customer. See page 50. Add modifier /S to order SG Iron for pressure rating over 210 bar.



Ports
C2, V1 & V2
Assembly Model Code*
3/4" BSPP **CBG*-LHN-YVR**

0-240 L/min. Cavity T-17A



Ports
C2, V1 & V2
Assembly Model Code*
3/4" BSPP **CBG*-LJN-YVR**

The asterisk () shown in the fourth digit of the model code indicates the counterbalance pilot ratio of the cartridge and must be specified by customer. See page 50. Add modifier /S to order SG Iron for pressure rating over 210 bar.

The asterisk () shown in the fourth digit of the model code indicates the counterbalance pilot ratio of the cartridge and must be specified by customer. See page 50. Add modifier /S to order SG Iron for pressure rating over 210 bar.

NOTES: Page 50 for cartridge model CB**.* shows performance curves, technical tips, and options. See page vii for technical information about line mount bodies including SAE flange pattern specifications. Consult the Sun Factory for other port sizes available in the bodies shown above.