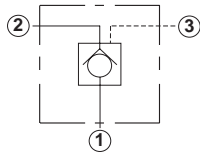


Line Mounted Assemblies

THREE PORT PILOT-TO-OPEN CHECK APPLICATIONS (90 DEGREE BODIES)

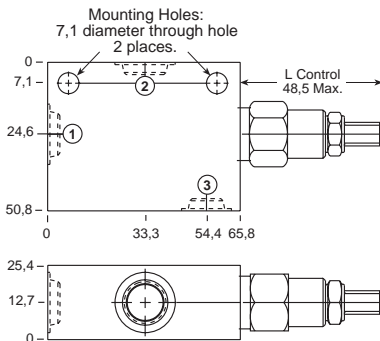
PILOT OPERATED ASSEMBLIES

Go to www.sunhydraulics.com
for more product information.

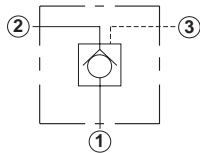


0-30 L/min. Cavity T-163A

Ports 1 and 2	Port 3	Assembly Model Code*
1/4" BSPP	1/4" BSPP	CKBB-XCN-JCT
3/8" BSPP	1/4" BSPP	CKBB-XCN-JCU

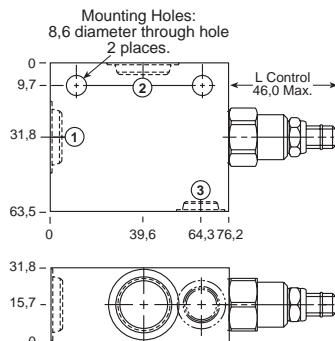


*Add modifier /S to order SG Iron for pressure rating over 210 bar.

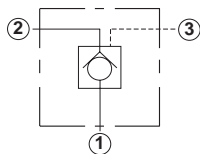


0-60 L/min. Cavity T-11A

Ports 1 and 2	Port 3	Assembly Model Code*
3/8" BSPP	1/4" BSPP	CKCB-XCN-ECU
1/2" BSPP	1/4" BSPP	CKCB-XCN-ECV

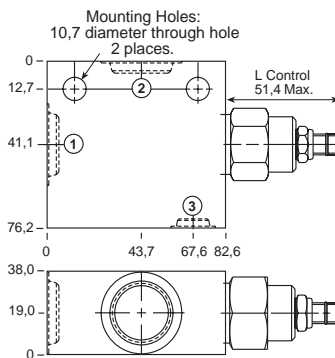


*Add modifier /S to order SG Iron for pressure rating over 210 bar.



0-120 L/min. Cavity T-2A

Ports 1 and 2	Port 3	Assembly Model Code*
1/2" BSPP	1/4" BSPP	CKEB-XCN-BCV
3/4" BSPP	1/4" BSPP	CKEB-XCN-BCW



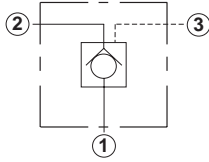
*Add modifier /S to order SG Iron for pressure rating over 210 bar.

NOTES: Page 78 for cartridge model CK*B-*** shows performance curves, technical tips, and options.
See page vii for technical information about line mount bodies including SAE flange pattern specifications.
Consult the Sun Factory for other port sizes available in the bodies shown above.
Model Codes printed in red are Preferred Products and are readily available.

THREE PORT PILOT-TO-OPEN CHECK APPLICATIONS (90 DEGREE BODIES)

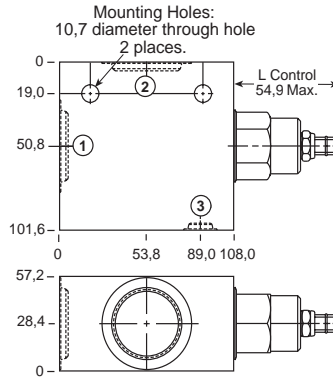
PILOT OPERATED ASSEMBLIES

Go to www.sunhydraulics.com for more product information.



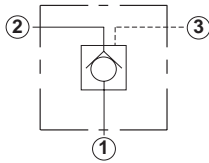
0-240 L/min. Cavity T-17A

Ports 1 and 2	Port 3	Assembly Model Code*
1" BSPP	1/4" BSPP	CKGB-XCN-HCX
1 1/4" BSPP	1/4" BSPP	CKGB-XCN-HCY

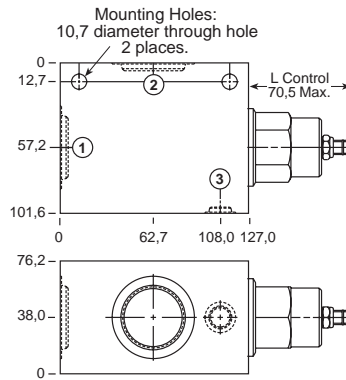


*Add modifier /S to order SG Iron for pressure rating over 210 bar.

0-480 L/min. Cavity T-19A



Ports 1 and 2	Port 3	Assembly Model Code*
1" BSPP	1/4" BSPP	CKIB-XCN-KCX
1 1/4" BSPP	1/4" BSPP	CKIB-XCN-KCY



*Add modifier /S to order SG Iron for pressure rating over 210 bar.

NOTES: Page 78 for cartridge model CK*B-*** shows performance curves, technical tips, and options.
See page vii for technical information about line mount bodies including SAE flange pattern specifications.
Consult the Sun Factory for other port sizes available in the bodies shown above.
Model Codes printed in red are Preferred Products and are readily available.

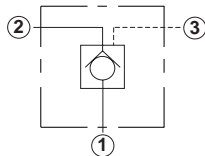
Line Mounted Assemblies

THREE PORT PILOT-TO-OPEN CHECK APPLICATIONS (INLINE BODIES)

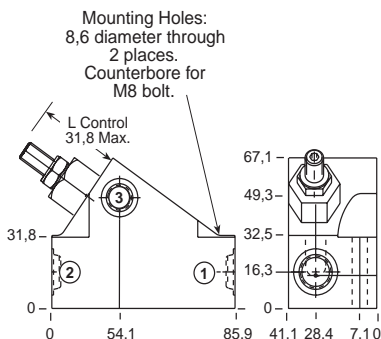
PILOT OPERATED ASSEMBLIES

Go to www.sunhydraulics.com
for more product information.

0-30 L/min. Cavity T-163A

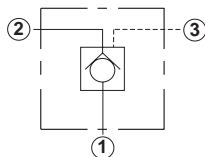


Ports 1 and 2	Port 3	Assembly Model Code*
1/4" BSPP	1/4" BSPP	CKBB-XCN-JJT
3/8" BSPP	1/4" BSPP	CKBB-XCN-JJU

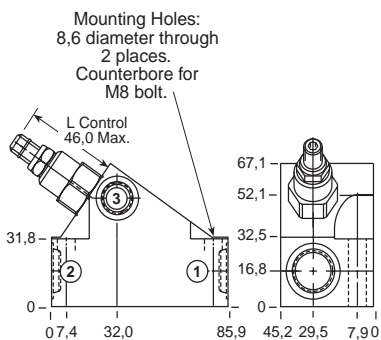


*Add modifier **/S** to order SG Iron for pressure rating over 210 bar.

0-60 L/min. Cavity T-11A



Ports 1 and 2	Port 3	Assembly Model Code*
3/8" BSPP	1/4" BSPP	CKCB-XCN-EJU
1/2" BSPP	1/4" BSPP	CKCB-XCN-EJV



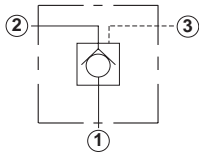
*Add modifier **/S** to order SG Iron for pressure rating over 210 bar.

NOTES: Page 78 for cartridge model CK*B-*** shows performance curves, technical tips, and options.
See page vii for technical information about line mount bodies including SAE flange pattern specifications.
Consult the Sun Factory for other port sizes available in the bodies shown above.
Model Codes printed in red are Preferred Products and are readily available.

THREE PORT PILOT-TO-OPEN CHECK APPLICATIONS (INLINE BODIES)

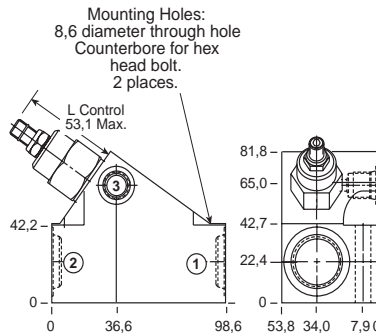
PILOT OPERATED ASSEMBLIES

Go to www.sunhydraulics.com for more product information.



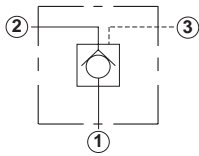
0-120 L/min. Cavity T-2A

Ports 1 and 2	Port 3	Assembly Model Code*
1/2" BSPP	1/4" BSPP	CKEB-XCN-BVV
3/4" BSPP	1/4" BSPP	CKEB-XCN-BVW

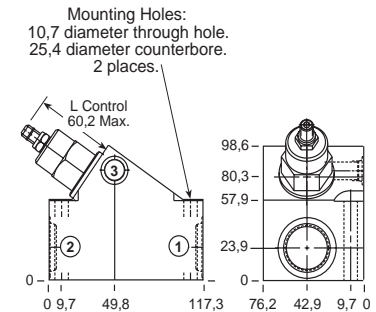


*Add modifier /S to order SG Iron for pressure rating over 210 bar.

0-240 L/min. Cavity T-17A



Ports 1 and 2	Port 3	Assembly Model Code*
3/4" BSPP	1/4" BSPP	CKGB-XCN-HDW
1" BSPP	1/4" BSPP	CKGB-XCN-HDX



*Add modifier /S to order SG Iron for pressure rating over 210 bar.

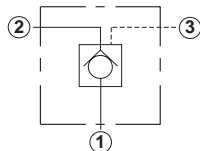
NOTES: Page 78 for cartridge model CK*B-*** shows performance curves, technical tips, and options.
See page vii for technical information about line mount bodies including SAE flange pattern specifications.
Consult the Sun Factory for other port sizes available in the bodies shown above.
Model Codes printed in red are Preferred Products and are readily available.

Line Mounted Assemblies

THREE PORT PILOT-TO-OPEN CHECK APPLICATIONS (90 DEGREE 2.00" SAE C61/C62 FLANGE PORT BODIES, 2 CAVITIES)

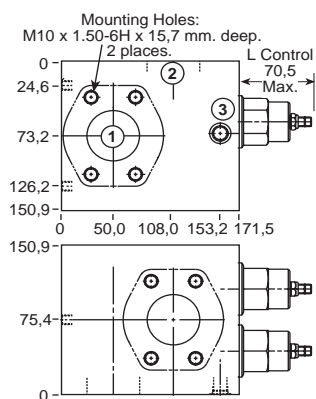
PILOT OPERATED ASSEMBLIES

Go to www.sunhydraulics.com
for more product information.

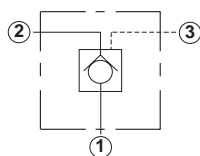


Ports 1 and 2	Port 3	Assembly Model Code*
2" SAE C61	1/4" BSPP	CKIB-XCN-XZZ/M

0-960 L/min. Cavity T-19A

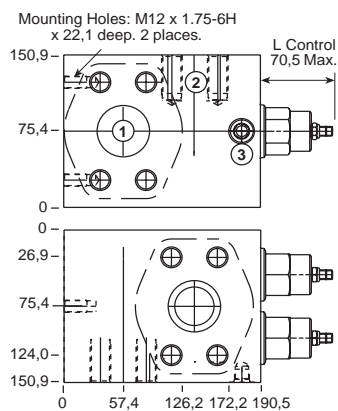


*Add modifier **/T** to order SG Iron for pressure rating over 210 bar.



Ports 1 and 2	Port 3	Assembly Model Code*
2" SAE C62	1/4" BSPP	CKIB-XCN-Z8Z/M

0-960 L/min. Cavity T-19A



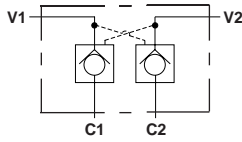
*Add modifier **/T** to order SG Iron for pressure rating over 210 bar.

NOTES: Page 78 for cartridge model CK*B-*** shows performance curves, technical tips, and options.
See page vii for technical information about line mount bodies including SAE flange pattern specifications.
Consult the Sun Factory for other port sizes available in the bodies shown above.

THREE PORT PILOT-TO-OPEN CHECK APPLICATIONS (90 DEGREE CROSS-PILOTED BODIES, 2 CAVITIES)

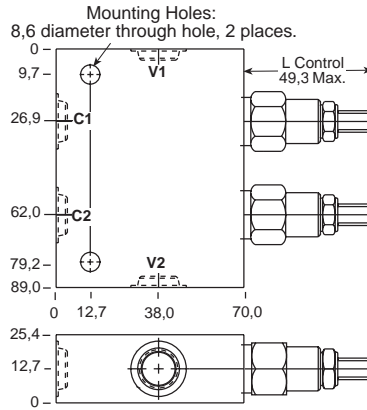
PILOT OPERATED ASSEMBLIES

Go to www.sunhydraulics.com for more product information.



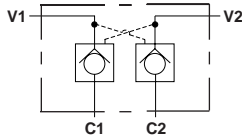
0-30 L/min. Cavity T-163A

Ports C1, C2, V1 & V2	Assembly Model Code*
1/4" BSPP	CKBB-XCN-JYT
3/8" BSPP	CKBB-XCN-JYU

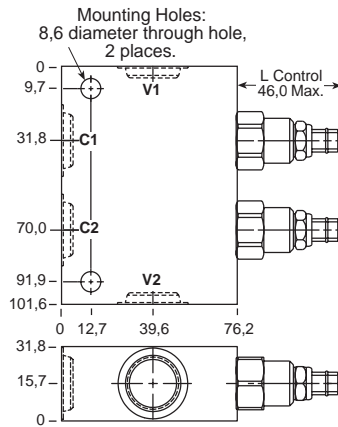


*Add modifier /S to order SG Iron for pressure rating over 210 bar.

0-60 L/min. Cavity T-11A



Ports C1, C2, V1 & V2	Assembly Model Code*
3/8" BSPP	CKCB-XCN-YEU
1/2" BSPP	CKCB-XCN-YEV



*Add modifier /S to order SG Iron for pressure rating over 210 bar.

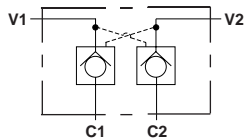
NOTES: Page 78 for cartridge model CK*B-*** shows performance curves, technical tips, and options. See page vii for technical information about line mount bodies including SAE flange pattern specifications. Consult the Sun Factory for other port sizes available in the bodies shown above.
Model Codes printed in red are Preferred Products and are readily available.

Line Mounted Assemblies

THREE PORT PILOT-TO-OPEN CHECK APPLICATIONS (90 DEGREE CROSS-PILOTED BODIES, 2 CAVITIES)

PILOT OPERATED ASSEMBLIES

Go to www.sunhydraulics.com
for more product information.

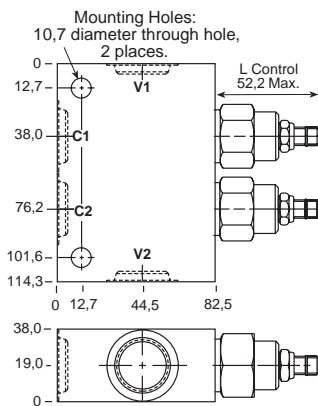


0-120 L/min.

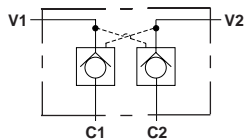
Cavity T-2A

Ports
C1, C2, V1 & V2
1/2" BSPP

**Assembly
Model Code***
CKEB-XCN-YAW



*Add modifier **/S** to order SG Iron for pressure rating over 210 bar.

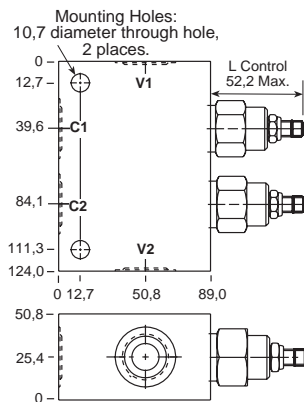


0-120 L/min.

Cavity T-2A

Ports
C1, C2, V1 & V2
3/4" BSPP

**Assembly
Model Code***
CKEB-XCN-YAW



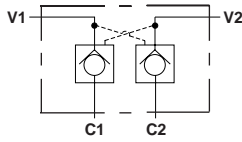
*Add modifier **/S** to order SG Iron for pressure rating over 210 bar.

NOTES: Page 78 for cartridge model CK*B-*** shows performance curves, technical tips, and options.
See page vii for technical information about line mount bodies including SAE flange pattern specifications.
Consult the Sun Factory for other port sizes available in the bodies shown above.
Model Codes printed in red are Preferred Products and are readily available.

**THREE PORT PILOT-TO-OPEN CHECK APPLICATIONS
(90 DEGREE CROSS-PILOTED BODIES, 2 CAVITIES)**

**PILOT OPERATED
ASSEMBLIES**

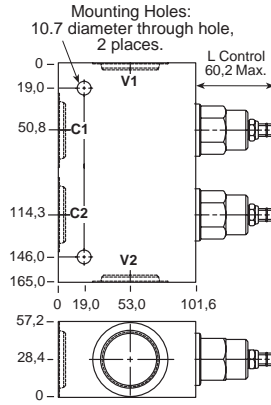
Go to www.sunhydraulics.com
for more product information.



0-240 L/min.

Cavity T-17A

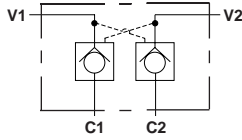
Ports C1, C2, V1 & V2	Assembly Model Code*
1" BSPP	CKGB-XCN-YJX
1 1/4" BSPP	CKGB-XCN-YJY



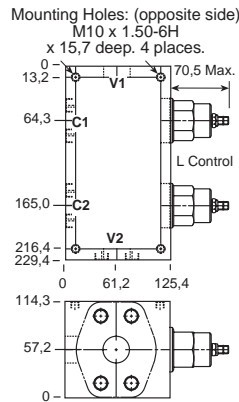
*Add modifier /S to order SG Iron for pressure rating over 210 bar.

0-480 L/min.

Cavity T-19A



Ports C1, C2, V1 & V2	Assembly Model Code*
1 1/2" SAE C62	CKIB-XCN-YM6/M



*Add modifier /T to order SG Iron for pressure rating over 210 bar.

NOTES: Page 78 for cartridge model CK*B-*** shows performance curves, technical tips, and options.
See page vii for technical information about line mount bodies including SAE flange pattern specifications.
Consult the Sun Factory for other port sizes available in the bodies shown above.
Model Codes printed in red are Preferred Products and are readily available.

Line Mounted Assemblies

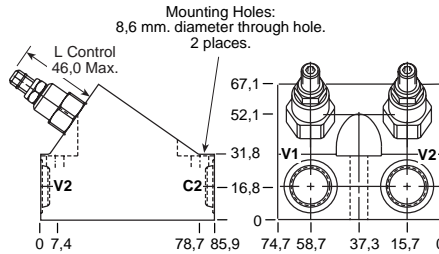
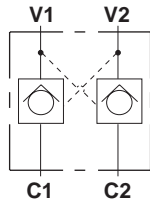
THREE PORT PILOT-TO-OPEN CHECK APPLICATIONS (INLINE CROSS-PILOTED BODIES, 2 CAVITIES)

PILOT OPERATED ASSEMBLIES

Go to www.sunhydraulics.com
for more product information.

0-60 L/min.

Cavity T-11A

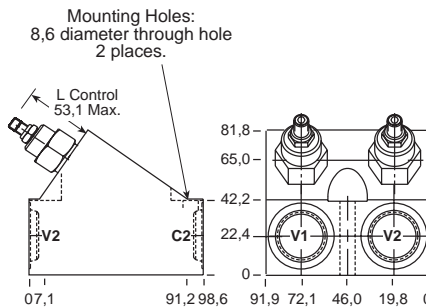
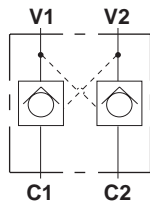


Ports C1, C2, V1 & V2	Assembly Model Code*
3/8" BSPP	CKCB-XCN-XEU
1/2" BSPP	CKCB-XCN-XEV

*Add modifier /S to order SG Iron for pressure rating over 210 bar.

0-120 L/min.

Cavity T-2A



Ports C1, C2, V1 & V2	Assembly Model Code*
1/2" BSPP	CKEB-XCN-XAV
3/4" BSPP	CKEB-XCN-XAW

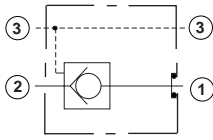
*Add modifier /S to order SG Iron for pressure rating over 210 bar.

NOTES: Page 78 for cartridge model CK*B-*** shows performance curves, technical tips, and options.
See page vii for technical information about line mount bodies including SAE flange pattern specifications.
Consult the Sun Factory for other port sizes available in the bodies shown above.
Model Codes printed in red are Preferred Products and are readily available.

**THREE PORT PILOT-TO-OPEN CHECK APPLICATIONS
(DIRECT MOUNT .75"/1.00"/1.25" SAE C61 FLANGE PORT/GASKET MOUNT BODIES,
THROUGH PILOT PORT)**

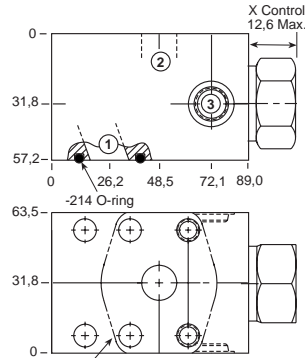
**PILOT OPERATED
ASSEMBLIES**

Go to www.sunhydraulics.com
for more product information.



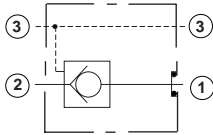
0-120 L/min. Cavity T-2A

Ports 1 and 2	Port 3	Assembly Model Code*
3/4" SAE C61	1/4" BSPP	CKEB-XCN-ZNV/M

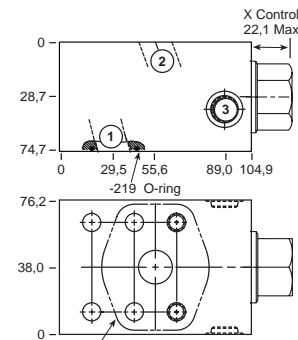


*Add modifier **T** to order SG Iron for pressure rating over 210 bar.

0-240 L/min. Cavity T-17A

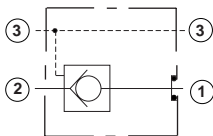


Ports 1 and 2	Port 3	Assembly Model Code*
1" SAE C61	1/4" BSPP	CKGB-XCN-ZNW/M

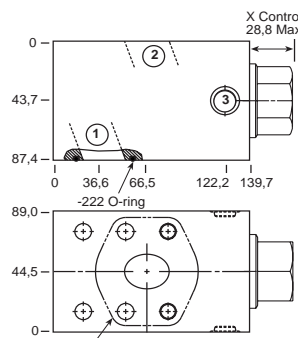


*Add modifier **T** to order SG Iron for pressure rating over 210 bar.

0-480 L/min. Cavity T-19A



Ports 1 and 2	Port 3	Assembly Model Code*
1 1/4" SAE C61	1/4" BSPP	CKIB-XCN-ZNX/M



*Add modifier **T** to order SG Iron for pressure rating over 210 bar.

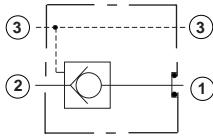
NOTES: Page 78 for cartridge model CK*B-*** shows performance curves, technical tips, and options.
See page vii for technical information about line mount bodies including SAE flange pattern specifications.
Consult the Sun Factory for other port sizes available in the bodies shown above.

Line Mounted Assemblies

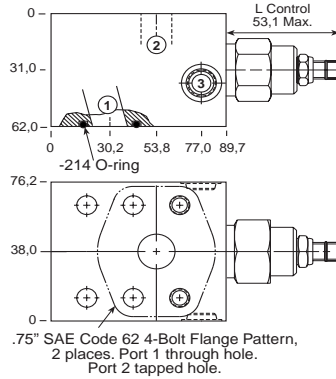
THREE PORT PILOT-TO-OPEN CHECK APPLICATIONS (DIRECT MOUNT .75"/1.00"/1.25" C62 FLANGE PORT/GASKET MOUNT BODIES, THROUGH PILOT/DRAIN PORT)

PILOT OPERATED ASSEMBLIES

Go to www.sunhydraulics.com
for more product information.



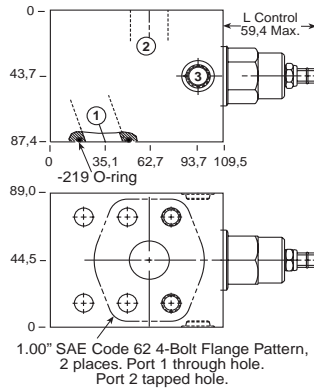
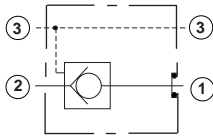
0-120 L/min. Cavity T-2A



Ports 1 and 2	Port 3	Assembly Model Code*
3/4" SAE C62	1/4" BSPP	CKEB-XCN-ZDS/M

*Add modifier **T** to order SG Iron for pressure rating over 210 bar.

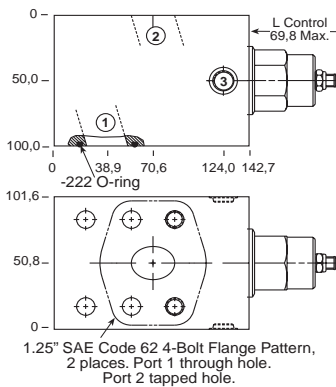
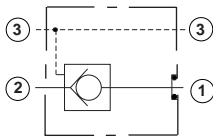
0-240 L/min. Cavity T-17A



Ports 1 and 2	Port 3	Assembly Model Code*
1" SAE C62	1/4" BSPP	CKGB-XCN-ZDR/M

*Add modifier **T** to order SG Iron for pressure rating over 210 bar.

0-480 L/min. Cavity T-19A



Ports 1 and 2	Port 3	Assembly Model Code*
1 1/4" SAE C62	1/4" BSPP	CKIB-XCN-ZFD/M

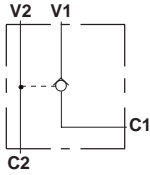
*Add modifier **T** to order SG Iron for pressure rating over 210 bar.

NOTES: Page 78 for cartridge model CK*B-*** shows performance curves, technical tips, and options.
See page vii for technical information about line mount bodies including SAE flange information and port sizes available in the bodies shown above.
Consult the Sun Factory for other port sizes available in the bodies shown above.

THREE PORT PILOT-TO-OPEN CHECK APPLICATIONS (GASKET MOUNT BODIES)

PILOT OPERATED ASSEMBLIES

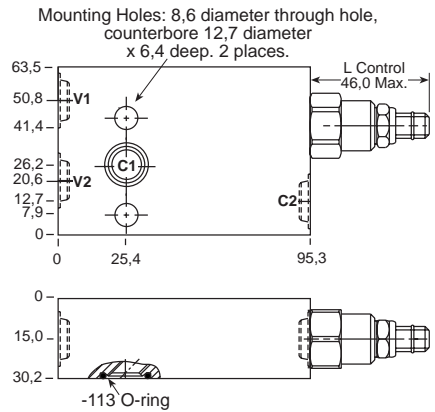
Go to www.sunhydraulics.com for more product information.



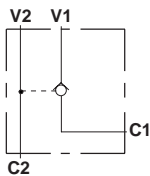
Ports
C1, C2, V1 & V2
3/8" BSPP

Assembly
Model Code*
CKCB-XCN-ZTD

0-60 L/min. Cavity T-11A



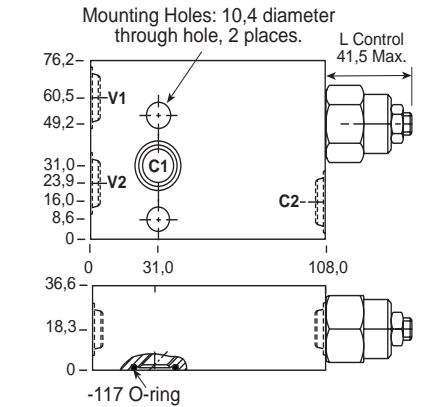
*Add modifier /S to order SG Iron for pressure rating over 210 bar.



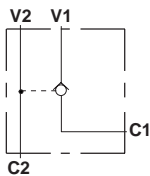
Ports
C1, C2, V1 & V2
1/2" BSPP

Assembly
Model Code*
CKEB-XCN-ZTH

0-120 L/min. Cavity T-2A



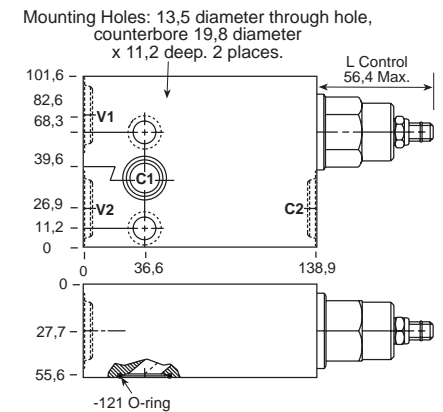
*Add modifier /S to order SG Iron for pressure rating over 210 bar.



Ports
C1, C2, V1 & V2
3/4" BSPP

Assembly
Model Code*
CKGB-XCN-ZTL

0-240 L/min. Cavity T-17A



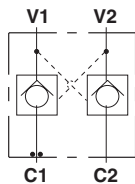
*Add modifier /S to order SG Iron for pressure rating over 210 bar.

NOTES: Page 78 for cartridge model CK*B-*** shows performance curves, technical tips, and options.
See page vii for technical information about line mount bodies including SAE flange pattern specifications.
Consult the Sun Factory for other port sizes available in the bodies shown above.
Model Codes printed in red are Preferred Products and are readily available.

THREE PORT PILOT-TO-OPEN CHECK APPLICATIONS (GASKET MOUNT BODIES, 2 CAVITIES)

PILOT OPERATED ASSEMBLIES

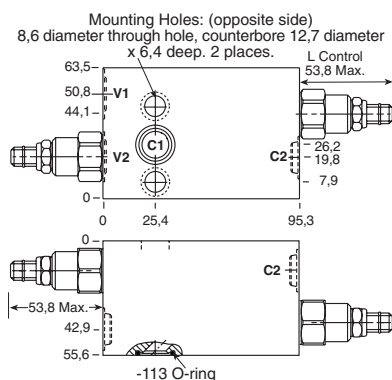
Go to www.sunhydraulics.com
for more product information.



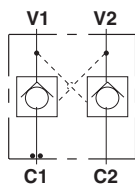
Ports
C2, V1 & V2
3/8 BSPP

Assembly
Model Code*
CKCB-XCN-YVX

0-60 L/min. Cavity T-11A



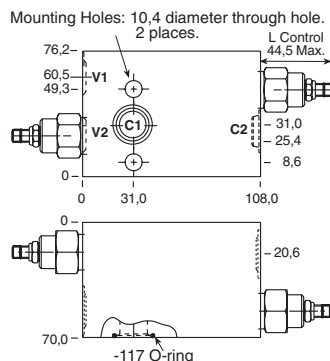
*Add modifier **/S** to order SG Iron for pressure rating
over 210 bar.



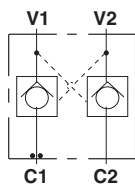
Ports
C2, V1 & V2
1/2" BSPP

Assembly
Model Code*
CKEB-XCN-YVE

0-120 L/min. Cavity T-2A



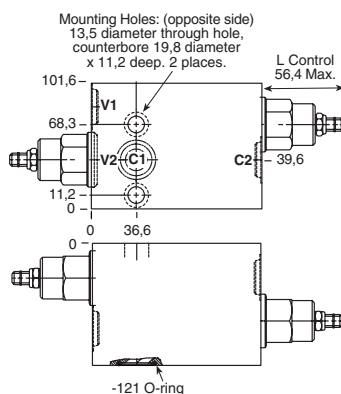
*Add modifier **/S** to order SG Iron for pressure rating
over 210 bar.



Ports
C2, V1 & V2
3/4" BSPP

Assembly
Model Code*
CKGB-XCN-YVR

0-240 L/min. Cavity T-17A



*Add modifier **/S** to order SG Iron for pressure rating
over 210 bar.

NOTES: Page 78 for cartridge model CK*B-*** shows performance curves, technical tips, and options.
See page vii for technical information about line mount bodies including SAE flange pattern specifications.
Consult for other port sizes available in the bodies shown above.