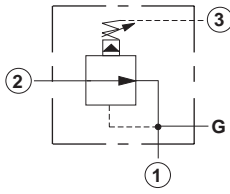


## Line Mounted Assemblies

# THREE PORT PRESSURE REDUCING APPLICATIONS (90 DEGREE BODIES)

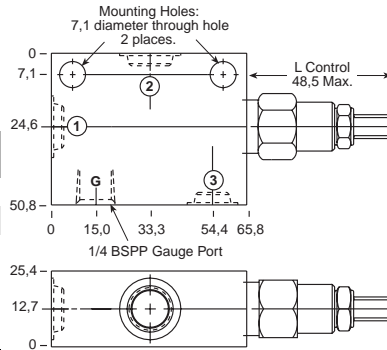
### PILOT OPERATED ASSEMBLIES

Go to [www.sunhydraulics.com](http://www.sunhydraulics.com) for more product information.

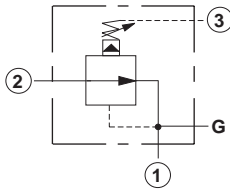


### 0-20 L/min. Cavity T-163A

Ports 1 and 2	Port 3	Assembly Model Code*
1/4" BSPP	1/4" BSPP	<b>PBBB-LAN-JFT</b>
3/8" BSPP	1/4" BSPP	<b>PBBB-LAN-JFU</b>

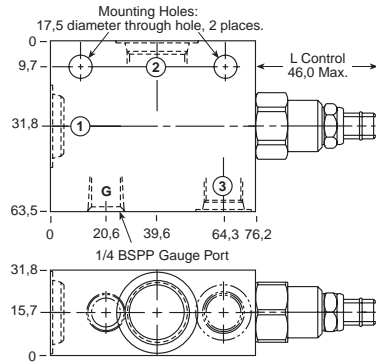


\*Add modifier /S to order SG Iron for pressure rating over 210 bar.

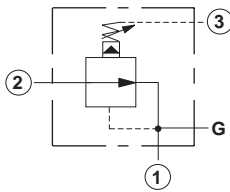


### 0-40 L/min. Cavity T-11A

Ports 1 and 2	Port 3	Assembly Model Code*
3/8" BSPP	1/4" BSPP	<b>PBDB-LAN-EFU</b>
1/2" BSPP	1/4" BSPP	<b>PBDB-LAN-EFV</b>

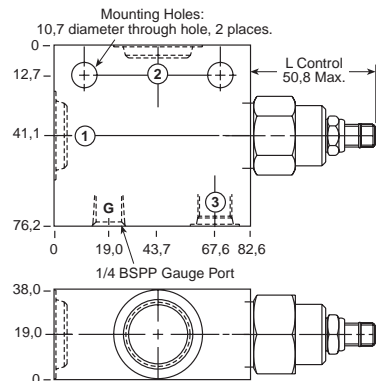


\*Add modifier /S to order SG Iron for pressure rating over 210 bar.



### 0-80 L/min. Cavity T-2A

Ports 1 and 2	Port 3	Assembly Model Code*
1/2" BSPP	1/4" BSPP	<b>PBFB-LAN-BFV</b>
3/4" BSPP	1/4" BSPP	<b>PBFB-LAN-BFW</b>



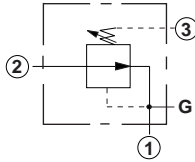
\*Add modifier /S to order SG Iron for pressure rating over 210 bar.

NOTES: Page 34 for cartridge model PB\*B-\*\*\* shows performance curves, technical tips, and options.  
See page vii for technical information about line mount bodies including SAE flange pattern specifications.  
Consult the Sun Factory for other port sizes available in the bodies shown above.  
Model Codes printed in red are Preferred Products and are readily available.

# THREE PORT PRESSURE REDUCING APPLICATIONS (90 DEGREE BODIES)

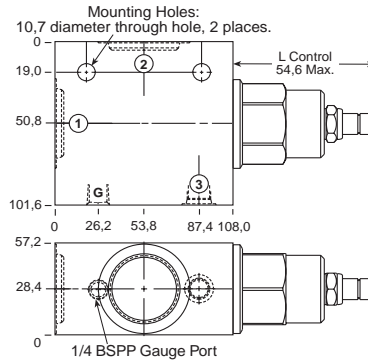
## PILOT OPERATED ASSEMBLIES

Go to [www.sunhydraulics.com](http://www.sunhydraulics.com) for more product information.



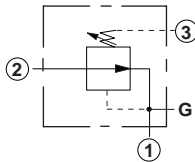
### 0-160 L/min. Cavity T-17A

Ports 1 and 2	Port 3	Assembly Model Code*
1" BSPP	1/4" BSPP	<b>PBHB-LAN-HFX</b>
1 1/4" BSPP	1/4" BSPP	<b>PBHB-LAN-HFY</b>

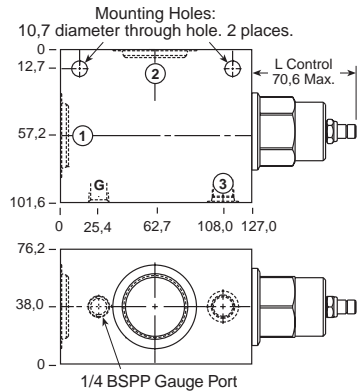


\*Add modifier /S to order SG Iron for pressure rating over 210 bar.

### 0-320 L/min. Cavity T-19A



Ports 1 and 2	Port 3	Assembly Model Code*
1" BSPP	1/4" BSPP	<b>PBJB-LAN-KFX</b>
1 1/4" BSPP	1/4" BSPP	<b>PBJB-LAN-KFY</b>



\*Add modifier /S to order SG Iron for pressure rating over 210 bar.

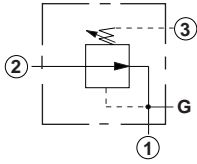
NOTES: Page 34 for cartridge model PB\*B-\*\*\* shows performance curves, technical tips, and options.  
See page vii for technical information about line mount bodies including SAE flange pattern specifications.  
Consult the Sun Factory for other port sizes available in the bodies shown above.  
Model Codes printed in red are Preferred Products and are readily available.

## Line Mounted Assemblies

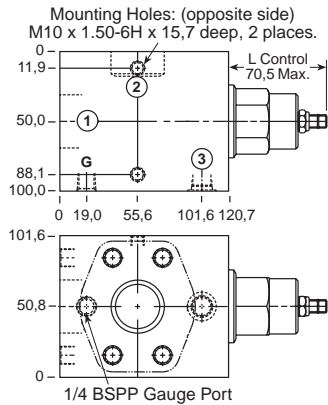
# THREE PORT PRESSURE REDUCING APPLICATIONS (90 DEGREE, 1.50" SAE C61/C62 FLANGE PORT BODIES)

### PILOT OPERATED ASSEMBLIES

Go to [www.sunhydraulics.com](http://www.sunhydraulics.com)  
for more product information.

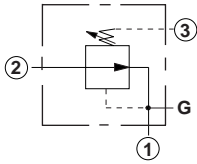


### 0-320 L/min. Cavity T-19A

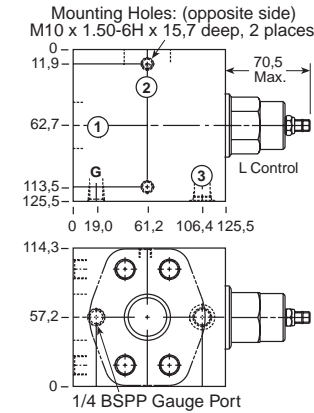


Ports 1 and 2	Port 3	Assembly Model Code*
1 1/2" SAE C61	1/4" BSPP	<b>PBJB-LAN-KFR/M</b>

\*Add modifier **T** to order SG Iron for pressure rating over 210 bar.



### 0-320 L/min. Cavity T-19A



Ports 1 and 2	Port 3	Assembly Model Code*
1 1/2" SAE C62	1/4" BSPP	<b>PBJB-LAN-KF6/M</b>

\*Add modifier **T** to order SG Iron for pressure rating over 210 bar.

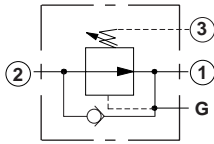
NOTES: Page 34 for cartridge model PB\*B-\*\*\* shows performance curves, technical tips, and options.  
See page vii for technical information about line mount bodies including SAE flange pattern specifications.  
Consult the Sun Factory for other port sizes available in the bodies shown above.

# THREE PORT PRESSURE REDUCING APPLICATIONS (BODIES WITH REVERSE FREE FLOW CHECK)

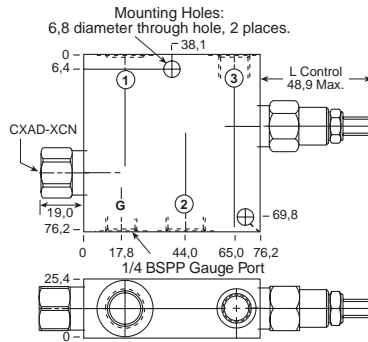
## PILOT OPERATED ASSEMBLIES

Go to [www.sunhydraulics.com](http://www.sunhydraulics.com) for more product information.

### 0-20 L/min. Cavity T-163A

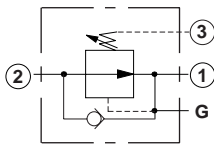


Ports 1 and 2	Port 3	Assembly Model Code*
1/4" BSPP	1/4" BSPP	PBBB-LAN-J2T
3/8" BSPP	1/4" BSPP	PBBB-LAN-J2U

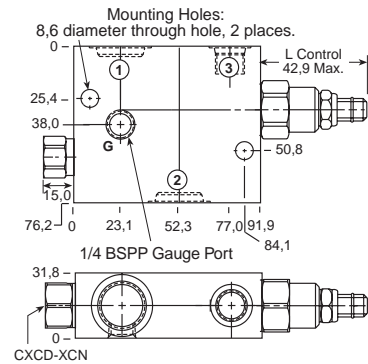


\*Add modifier /S to order SG Iron for pressure rating over 210 bar.

### 0-40 L/min. Cavity T-11A

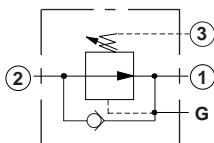


Ports 1 and 2	Port 3	Assembly Model Code*
3/8" BSPP	1/4" BSPP	PBDB-LAN-E2U
1/2" BSPP	1/4" BSPP	PBDB-LAN-E2V

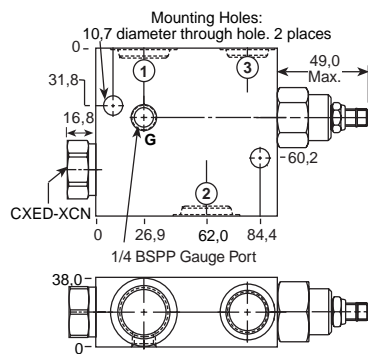


\*Add modifier /S to order SG Iron for pressure rating over 210 bar.

### 0-80 L/min. Cavity T-2A



Ports 1 and 2	Port 3	Assembly Model Code*
1/2" BSPP	1/4" BSPP	PBFB-LAN-B2V
3/4" BSPP	1/4" BSPP	PBFB-LAN-B2W



\*Add modifier /S to order SG Iron for pressure rating over 210 bar.

NOTES: Page 34 for cartridge model PB\*B-\*\*\* shows performance curves, technical tips, and options.  
See page vii for technical information about line mount bodies including SAE flange pattern specifications.  
Consult the Sun Factory for other port sizes available in the bodies shown above.

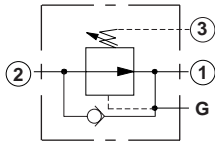
## Line Mounted Assemblies

# THREE PORT PRESSURE REDUCING APPLICATIONS (BODIES WITH REVERSE FREE FLOW CHECK)

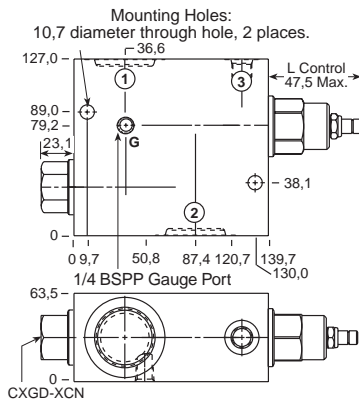
### PILOT OPERATED ASSEMBLIES

Go to [www.sunhydraulics.com](http://www.sunhydraulics.com)  
for more product information.

### 0-160 L/min. Cavity T-17A

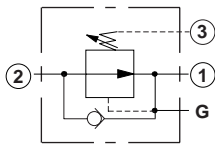


Ports 1 and 2	Port 3	Assembly Model Code*
1" BSPP	1/4" BSPP	<b>PBHB-LAN-H2X</b>
1 1/4" BSPP	1/4" BSPP	<b>PBHB-LAN-H2Y</b>

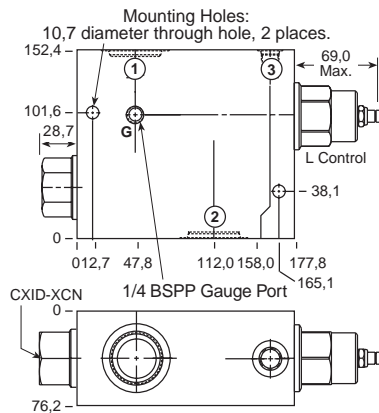


\*Add modifier **/S** to order SG Iron for pressure rating over 210 bar.

### 0-320 L/min. Cavity T-19A



Ports 1 and 2	Port 3	Assembly Model Code*
1" BSPP	1/4" BSPP	<b>PBJB-LAN-K2X</b>
1 1/4" BSPP	1/4" BSPP	<b>PBJB-LAN-K2Y</b>



\*Add modifier **/S** to order SG Iron for pressure rating over 210 bar.

NOTES: Page 34 for cartridge model PB\*B-\*\*\* shows performance curves, technical tips, and options.  
See page vii for technical information about line mount bodies including SAE flange pattern specifications.  
Consult the Sun Factory for other port sizes available in the bodies shown above.