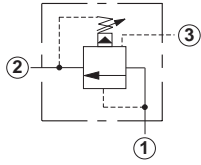


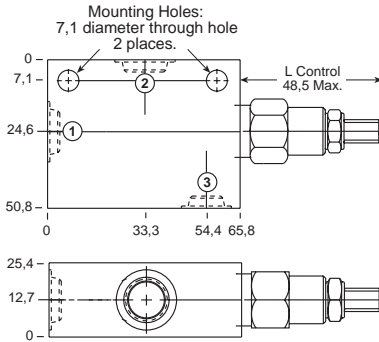
Line Mounted Assemblies

THREE PORT PRESSURE REGULATING RELIEF APPLICATIONS
(90 DEGREE BODIES)PILOT OPERATED
ASSEMBLIESGo to www.sunhydraulics.com
for more product information.

0-30 L/min. Cavity T-163A

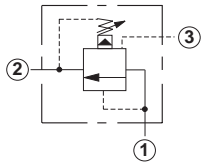


Ports 1 and 2	Port 3	Assembly Model Code*
1/4" BSPP	1/4" BSPP	RVBA-LAN-JCT
3/8" BSPP	1/4" BSPP	RVBA-LAN-JCU

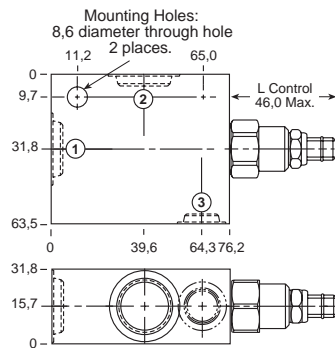


*Add modifier /S to order SG Iron for pressure rating over 210 bar.

0-60 L/min. Cavity T-11A

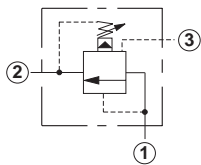


Ports 1 and 2	Port 3	Assembly Model Code*
3/8" BSPP	1/4" BSPP	RVCA-LAN-ECU
1/2" BSPP	1/4" BSPP	RVCA-LAN-ECV

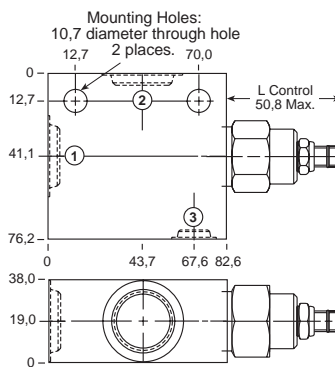


*Add modifier /S to order SG Iron for pressure rating over 210 bar.

0-120 L/min. Cavity T-2A



Ports 1 and 2	Port 3	Assembly Model Code*
1/2" BSPP	1/4" BSPP	RVEA-LAN-BCV
3/4" BSPP	1/4" BSPP	RVEA-LAN-BCW



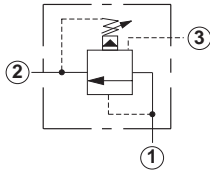
*Add modifier /S to order SG Iron for pressure rating over 210 bar.

NOTES: Page 12 for cartridge model RV*A-*** shows performance curves, technical tips, and options.
See page viii for technical information about line mount bodies including SAE flange pattern specifications.
Consult the Sun Factory for other port sizes available in the bodies shown above.
Model Codes printed in red are Preferred Products and are readily available.

THREE PORT PRESSURE REGULATING RELIEF APPLICATIONS (90 DEGREE/90 DEGREE 1.50" SAE C62 FLANGE PORT BODIES)

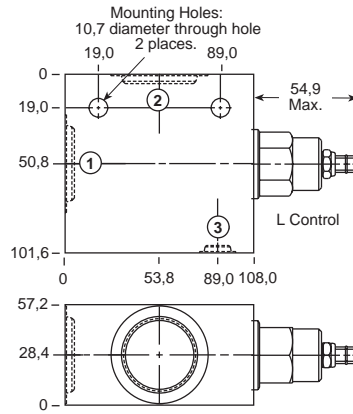
PILOT OPERATED ASSEMBLIES

Go to www.sunhydraulics.com for more product information.

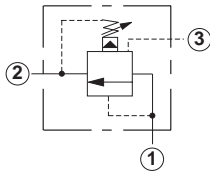


0-240 L/min. Cavity T-17A

Ports 1 and 2	Port 3	Assembly Model Code*
3/4" BSPP	1/4" BSPP	RVGA-LAN-HCW
1" BSPP	1/4" BSPP	RVGA-LAN-HCX
1 1/4" BSPP	1/4" BSPP	RVGA-LAN-HCY

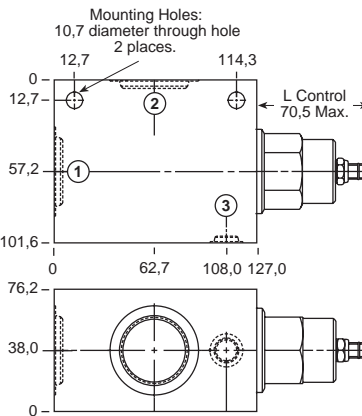


*Add modifier /S to order SG Iron for pressure rating over 210 bar.

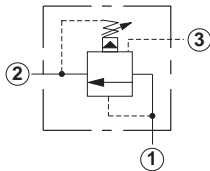


0-480 L/min. Cavity T-19A

Ports 1 and 2	Port 3	Assembly Model Code*
1" BSPP	1/4" BSPP	RVIA-LAN-KCX
1 1/4" BSPP	1/4" BSPP	RVIA-LAN-KCY

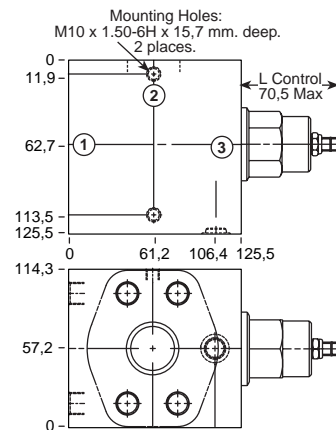


*Add modifier /S to order SG Iron for pressure rating over 210 bar.



0-480 L/min. Cavity T-19A

Ports 1 and 2	Port 3	Assembly Model Code*
1 1/2" SAE C62	1/4" BSPP	RVIA-LAN-KC6/M



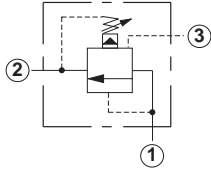
*Add modifier /T to order SG Iron for pressure rating over 210 bar.

NOTES: Page 12 for cartridge model RV*A-*** shows performance curves, technical tips, and options.
See page vii for technical information about line mount bodies including SAE flange pattern specifications.
Consult the Sun Factory for other port sizes available in the bodies shown above.
Model Codes printed in red are Preferred Products and are readily available.

Line Mounted Assemblies

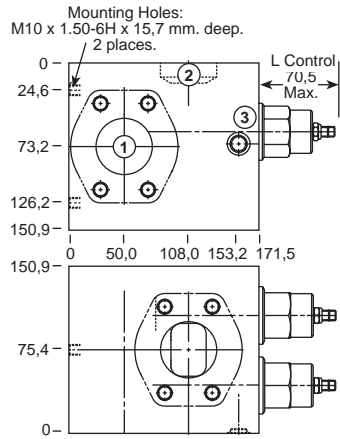
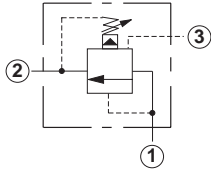
THREE PORT PRESSURE REGULATING RELIEF APPLICATIONS (90 DEGREE 2.00" SAE C61/C62 FLANGE PORT BODIES, 2 CAVITIES)

**PILOT OPERATED
ASSEMBLIES**

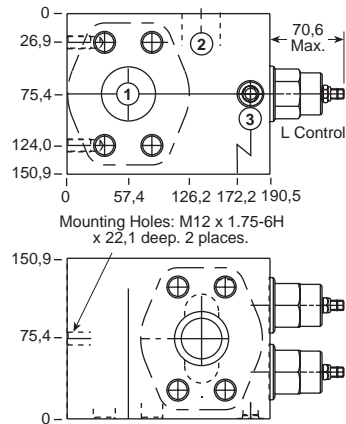
 Go to www.sunhydraulics.com
for more product information.


Ports 1 and 2	Port 3	Assembly Model Code*
2" SAE C61	1/4" BSPP	RVIA-LAN-XZZ/M

 *Add modifier **/T** to order SG Iron for pressure rating over 210 bar.

0-960 L/min. Cavity T-19A

0-960 L/min. Cavity T-19A


Ports 1 and 2	Port 3	Assembly Model Code*
2" SAE C62	1/4" BSPP	RVIA-LAN-Z8Z/M

 *Add modifier **/T** to order SG Iron for pressure rating over 210 bar.


NOTES: Page 12 for cartridge model RV*A-*** shows performance curves, technical tips, and options.
See page vii for technical information about line mount bodies including SAE flange pattern specifications.
Consult the Sun Factory for other port sizes available in the bodies shown above.

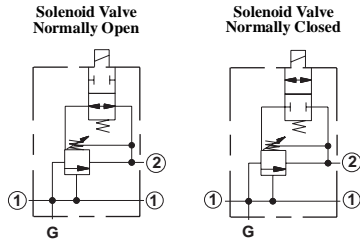
THREE PORT PRESSURE REGULATING RELIEF APPLICATIONS (SOLENOID OPERATED BODIES WITH VENTED RELIEF)

PILOT OPERATED ASSEMBLIES

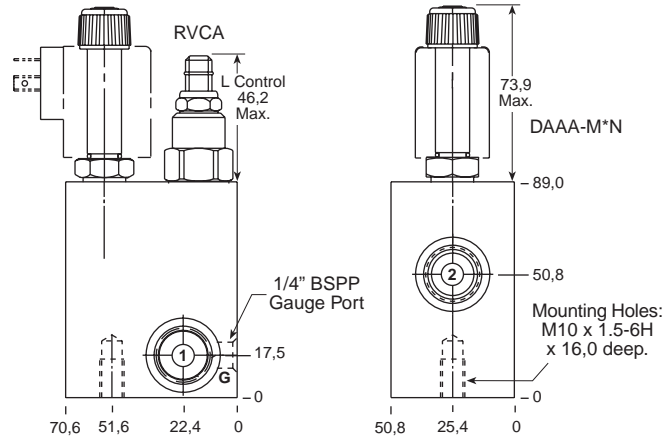
Suitable for operation up to 350 bar

Go to www.sunhydraulics.com for more product information.

0-60 L/min. Cavity T-11A



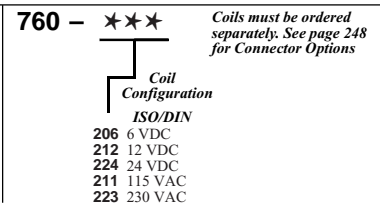
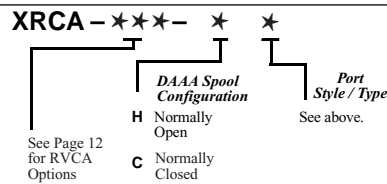
Ports 1 and 2	Assembly Model Code*
1/4" BSPP	XRCA-LAN-T
3/8" BSPP	XRCA-LAN-U
1/2" BSPP	XRCA-LAN-V



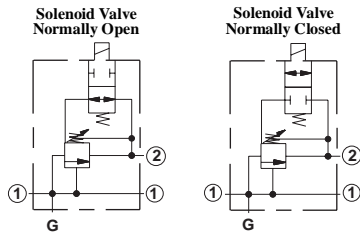
*Add modifier /S to order SG Iron for pressure rating over 210 bar.

Assembly Order:

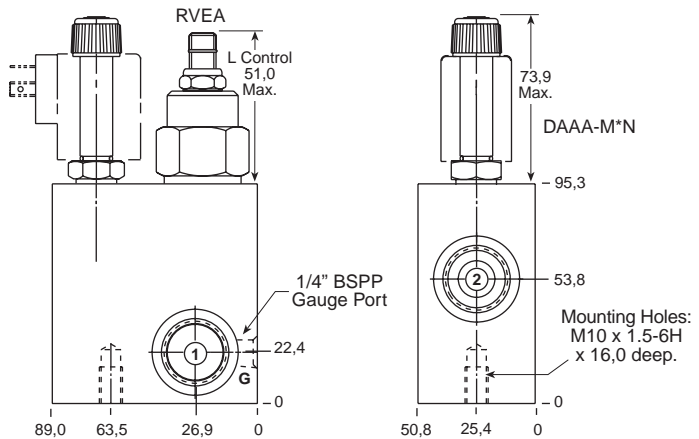
Solenoid Coil Order:



0-120 L/min. Cavity T-2A



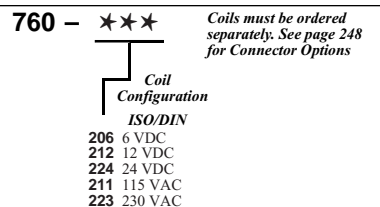
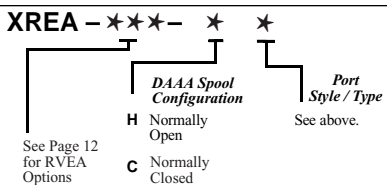
Ports 1 and 2	Assembly Model Code*
3/8" BSPP	XREA-LAN-U
1/2" BSPP	XREA-LAN-V
3/4" BSPP	XREA-LAN-W



*Add modifier /S to order SG Iron for pressure rating over 210 bar.

Assembly Order:

Solenoid Coil Order:



NOTES: Page 12 for cartridge model RV*A-*** shows performance curves, technical tips, and options.
See page vii for technical information about line mount bodies including SAE flange pattern specifications.
Consult the Sun Factory for other port sizes available in the bodies shown above.
Model Codes printed in red are Preferred Products and are readily available.

Line Mounted Assemblies

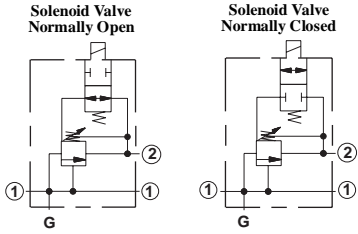
THREE PORT PRESSURE REGULATING RELIEF APPLICATIONS (SOLENOID OPERATED, FLANGE MOUNTED BODIES WITH VENTED RELIEF)

PILOT OPERATED ASSEMBLIES

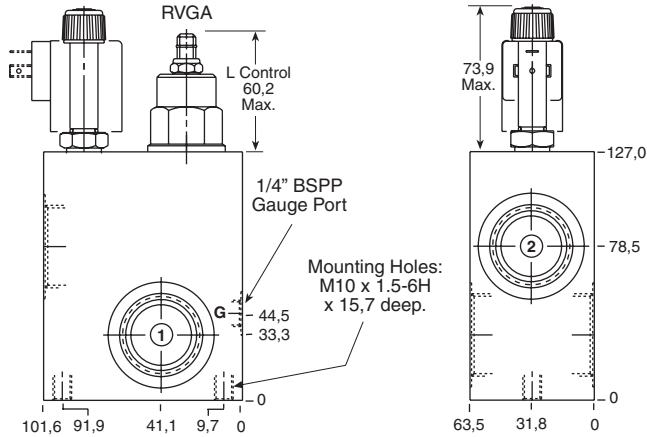
Suitable for operation
up to 350 bar

Go to www.sunhydraulics.com
for more product information.

0-240 L/min. Cavity T-17A

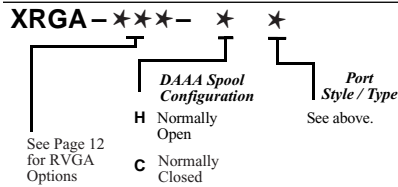


Ports 1 and 2	Assembly Model Code*
3/4" BSPP	XRGA-LAN-W
1" BSPP	XRGA-LAN-X
1 1/4" BSPP	XRGA-LAN-Y

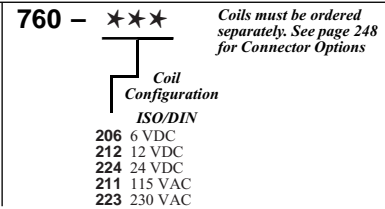


*Add modifier **T** to order SG Iron for pressure rating over 210 bar.

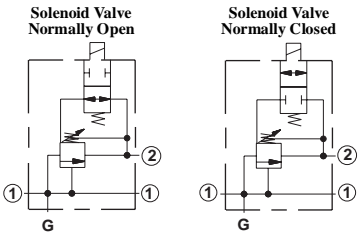
Assembly Order:



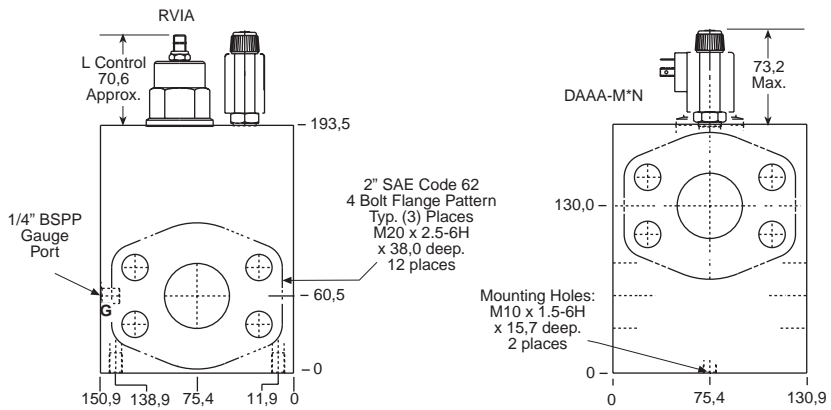
Solenoid Coil Order:



0-480 L/min. Cavity T-19A

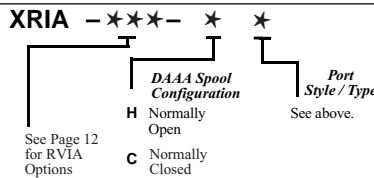


Ports 1 and 2	Assembly Model Code*
2" SAE C62	XRIA-LAN-8/M

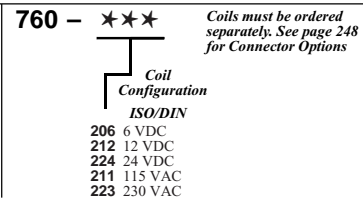


*Add modifier **T** to order SG Iron for pressure rating over 210 bar.

Assembly Order:



Solenoid Coil Order:



NOTES: Page 12 for cartridge model RV*A-*** shows performance curves, technical tips, and options.
See page vii for technical information about line mount bodies including SAE flange pattern specifications.
Consult the Sun Factory for other port sizes available in the bodies shown above.