

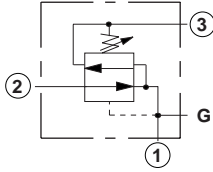
Line Mounted Assemblies

THREE PORT PRESSURE REDUCING/RELIEVING APPLICATIONS (90 DEGREE, HIGH CAPACITY PORT 3 BODIES)

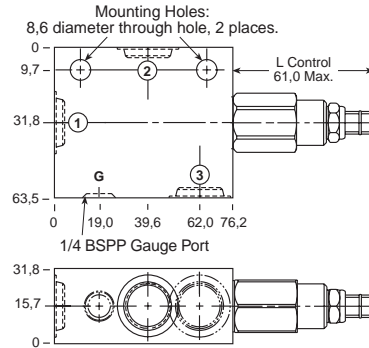
PILOT OPERATED ASSEMBLIES

Go to www.sunhydraulics.com for more product information.

DIRECT ACTING ASSEMBLIES



0-40 L/min. Cavity T-11A

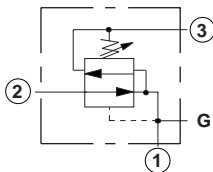


Ports 1 and 2	Port 3	Assembly Model Code*
3/8 BSPP	3/8 BSPP	PRDB-LAN-ELU
1/2" BSPP	3/8" BSPP	PPDB-LAN-ELV

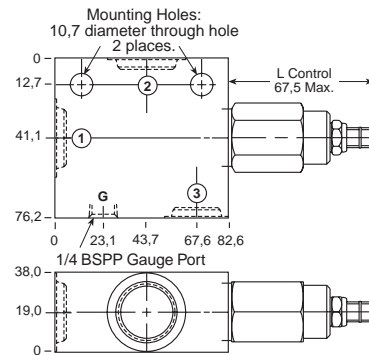
Ports 1 and 2	Port 3	Assembly Model Code*
3/8" BSPP	3/8" BSPP	PRDB-LAN-ELU
1/2" BSPP	3/8" BSPP	PRDB-LAN-ELV

*Add modifier **/S** to order SG Iron for pressure rating over 210 bar.

*Add modifier **/S** to order SG Iron for pressure rating over 210 bar.



0-80 L/min. Cavity T-2A



Ports 1 and 2	Port 3	Assembly Model Code*
1/2" BSPP	1/2" BSPP	PPFB-LAN-BLV
3/4" BSPP	1/2" BSPP	PPFB-LAN-BLW

Ports 1 and 2	Port 3	Assembly Model Code*
1/2" BSPP	1/2" BSPP	PRFB-LAN-BLV
3/4" BSPP	1/2" BSPP	PRFB-LAN-BLW

*Add modifier **/S** to order SG Iron for pressure rating over 210 bar.

*Add modifier **/S** to order SG Iron for pressure rating over 210 bar.

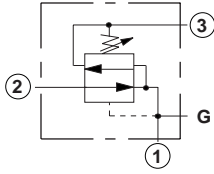
NOTES: Page 42 for cartridge models PP*B-*** and PR*B-*** show performance curves, technical tips, and options. See page vii for technical information about line mount bodies including SAE flange pattern specifications. Consult the Sun Factory for other port sizes available in the bodies shown above. Model Codes printed in red are Preferred Products and are readily available.

THREE PORT PRESSURE REDUCING/RELIEVING APPLICATIONS (90 DEGREE, HIGH CAPACITY PORT 3 BODIES)

PILOT OPERATED ASSEMBLIES

Go to www.sunhydraulics.com for more product information.

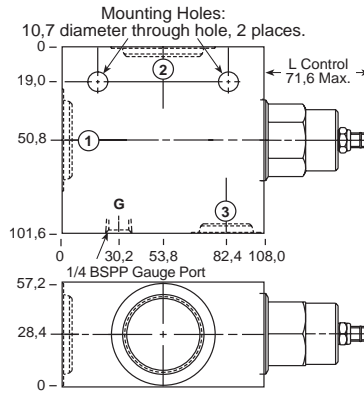
DIRECT ACTING ASSEMBLIES



Ports 1 and 2	Port 3	Assembly Model Code*
1" BSPP	3/4" BSPP	PPHB-LAN-HEX
1 1/4" BSPP	3/4" BSPP	PPHB-LAN-HEY

*Add modifier /S to order SG Iron for pressure rating over 210 bar.

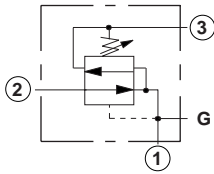
0-160 L/min. Cavity T-17A



Ports 1 and 2	Port 3	Assembly Model Code*
1" BSPP	3/4" BSPP	PRHB-LAN-HEX
1 1/4" BSPP	3/4" BSPP	PRHB-LAN-HEY

*Add modifier /S to order SG Iron for pressure rating over 210 bar.

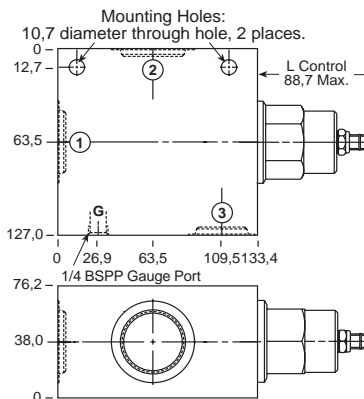
PILOT OPERATED ASSEMBLIES



Ports 1 and 2	Port 3	Assembly Model Code*
1" BSPP	1" BSPP	PPJB-LAN-KEX
1 1/4" BSPP	1" BSPP	PPJB-LAN-KEY

*Add modifier /S to order SG Iron for pressure rating over 210 bar.

0-320 L/min. Cavity T-19A



Ports 1 and 2	Port 3	Assembly Model Code*
1" BSPP	1" BSPP	PRJB-LAN-KEX
1 1/4" BSPP	1" BSPP	PRJB-LAN-KEY

*Add modifier /S to order SG Iron for pressure rating over 210 bar.

NOTES: Page 42 for cartridge models PP*B-*** and PR*B-*** show performance curves, technical tips, and options. See page vii for technical information about line mount bodies including SAE flange pattern specifications. Consult the Sun Factory for other port sizes available in the bodies shown above. Model Codes printed in red are Preferred Products and are readily available.

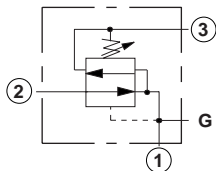
Line Mounted Assemblies

THREE PORT PRESSURE REDUCING/RELIEVING APPLICATIONS (90 DEGREE, 1.50" SAE C61/C62 FLANGE PORT BODIES, HIGH CAPACITY PORT 3)

PILOT OPERATED ASSEMBLIES

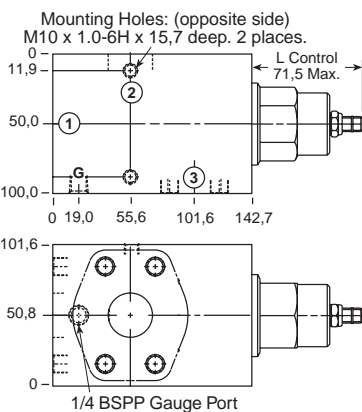
Go to www.sunhydraulics.com for more product information.

DIRECT ACTING ASSEMBLIES



Ports 1, 2, and 3
1 1/2" SAE C61
Assembly Model Code*
PPJB-LAN-KER/M

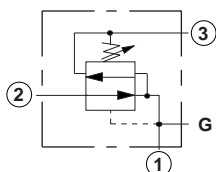
0-320 L/min. Cavity T-19A



Ports 1, 2, and 3
1 1/2" SAE C61
Assembly Model Code*
PRJB-LAN-KER/M

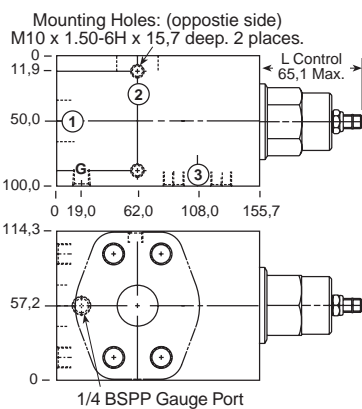
*Add modifier **/T** to order SG Iron for pressure rating over 210 bar.

*Add modifier **/T** to order SG Iron for pressure rating over 210 bar.



Ports 1, 2, and 3
1 1/2" SAE C62
Assembly Model Code*
PPJB-LAN-KE6/M

0-320 L/min. Cavity T-19A



Ports 1, 2, and 3
1 1/2" SAE C62
Assembly Model Code*
PRJB-LAN-KE6/M

*Add modifier **/T** to order SG Iron for pressure rating over 210 bar.

*Add modifier **/T** to order SG Iron for pressure rating over 210 bar.

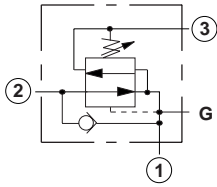
NOTES: Page 42 for cartridge model PP*B-*** show performance curves, technical tips, and options.
See page vii for technical information about line mount bodies including SAE flange information and port specifications.
Consult the Sun Factory for other port sizes available in the bodies shown above.

THREE PORT PRESSURE REDUCING/RELIEVING APPLICATIONS (BODIES WITH REVERSE FREE FLOW CHECK)

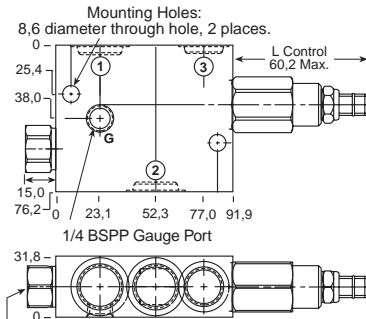
PILOT OPERATED ASSEMBLIES

Go to www.sunhydraulics.com for more product information.

DIRECT ACTING ASSEMBLIES



0-40 L/min. Cavity T-11A

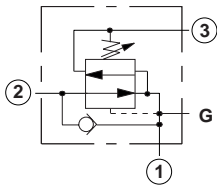


Ports 1 and 2	Port 3	Assembly Model Code*
3/8" BSPP	3/8" BSPP	PPDB-LAN-E4U
1/2" BSPP	3/8" BSPP	PPDB-LAN-E4V

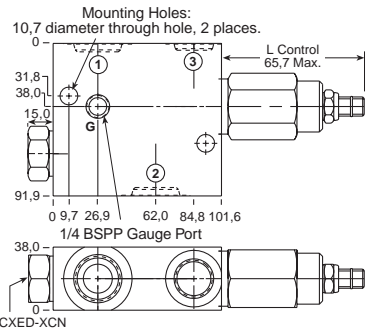
Ports 1 and 2	Port 3	Assembly Model Code*
3/8" BSPP	3/8" BSPP	PRDB-LAN-E4U
1/2" BSPP	3/8" BSPP	PRDB-LAN-E4V

*Add modifier /S to order SG Iron for pressure rating over 210 bar.

*Add modifier /S to order SG Iron for pressure rating over 210 bar.



0-80 L/min. Cavity T-2A



Ports 1 and 2	Port 3	Assembly Model Code*
1/2" BSPP	1/2" BSPP	PPFB-LAN-B4V
3/4" BSPP	1/2" BSPP	PPFB-LAN-B4W

Ports 1 and 2	Port 3	Assembly Model Code*
1/2" BSPP	1/2" BSPP	PRFB-LAN-B4V
3/4" BSPP	1/2" BSPP	PRFB-LAN-B4W

*Add modifier /S to order SG Iron for pressure rating over 210 bar.

*Add modifier /S to order SG Iron for pressure rating over 210 bar.

NOTES: Page 42 for cartridge models PP*B-*** and PR*B-*** show performance curves, technical tips, and options. See page vii for technical information about line mount bodies including SAE flange pattern specifications. Consult the Sun Factory for other port sizes available in the bodies shown above.

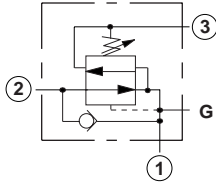
Line Mounted Assemblies

THREE PORT PRESSURE REDUCING/RELIEVING APPLICATIONS (BODIES WITH REVERSE FREE FLOW CHECK, HIGH CAPACITY PORT 3)

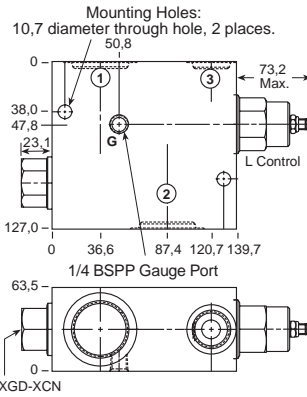
PILOT OPERATED ASSEMBLIES

Go to www.sunhydraulics.com
for more product information.

DIRECT ACTING ASSEMBLIES



0-160 L/min. Cavity T-17A

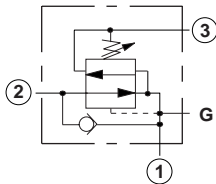


Ports 1 and 2	Port 3	Assembly Model Code*
1" BSPP	3/4" BSPP	PPHB-LAN-H4X
1 1/4" BSPP	3/4" BSPP	PPHB-LAN-H4Y

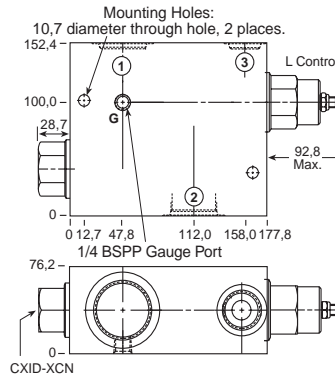
Ports 1 and 2	Port 3	Assembly Model Code*
1" BSPP	3/4" BSPP	PRHB-LAN-H4X
1 1/4" BSPP	3/4" BSPP	PRHB-LAN-H4Y

*Add modifier /S to order SG Iron for pressure rating over 210 bar.

*Add modifier /S to order SG Iron for pressure rating over 210 bar.



0-320 L/min. Cavity T-19A



Ports 1 and 2	Port 3	Assembly Model Code*
1" BSPP	3/4" BSPP	PPJB-LAN-K4X
1 1/4" BSPP	3/4" BSPP	PPJB-LAN-K4Y

Ports 1 and 2	Port 3	Assembly Model Code*
1" BSPP	3/4" BSPP	PRJB-LAN-K4X
1 1/4" BSPP	3/4" BSPP	PRJB-LAN-K4Y

*Add modifier /S to order SG Iron for pressure rating over 210 bar.

NOTES: Page 42 for cartridge models PP*B-*** and PR*B-*** show performance curves, technical tips, and options.
See page vii for technical information about line mount bodies including SAE flange pattern specifications.
Consult the Sun Factory for other port sizes available in the bodies shown above.