

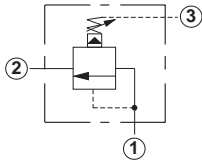
Line Mounted Assemblies

THREE PORT PRESSURE SEQUENCING APPLICATIONS (90 DEGREE BODIES)

PILOT OPERATED ASSEMBLIES

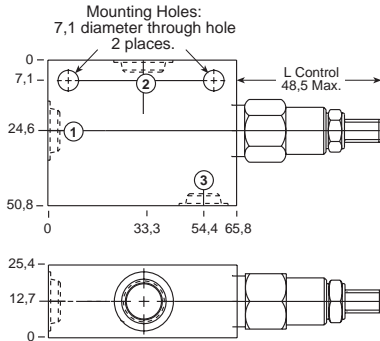
Go to www.sunhydraulics.com
for more product information.

DIRECT ACTING ASSEMBLIES

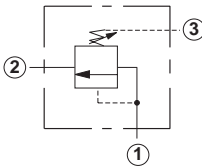


0-30 L/min. Cavity T-163A

| Ports 1 and 2 | Port 3 | Assembly Model Code* |
|---------------|-----------|----------------------|
| 1/4" BSPP | 1/4" BSPP | RSBC-LAN-JCT |
| 3/8" BSPP | 1/4" BSPP | RSBC-LAN-JCU |

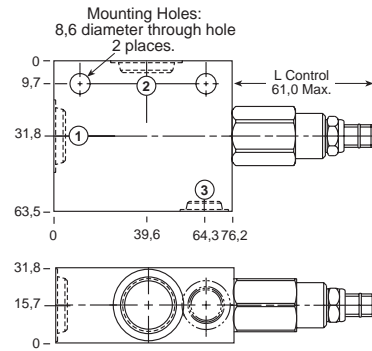


*Add modifier /S to order SG Iron for pressure rating over 210 bar.



0-60 L/min. Cavity T-11A

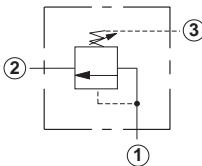
| Ports 1 and 2 | Port 3 | Assembly Model Code* |
|---------------|-----------|----------------------|
| 3/8" BSPP | 1/4" BSPP | RSDC-LAN-ECU |
| 1/2" BSPP | 1/4" BSPP | RSDC-LAN-ECV |



*Add modifier /S to order SG Iron for pressure rating over 210 bar.

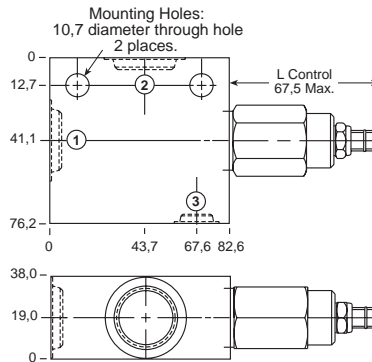
| Ports 1 and 2 | Port 3 | Assembly Model Code* |
|---------------|-----------|----------------------|
| 3/8" BSPP | 1/4" BSPP | SXCA-LAN-ECU |
| 1/2" BSPP | 1/4" BSPP | SXCA-LAN-ECV |

*Add modifier /S to order SG Iron for pressure rating over 210 bar.



0-120 L/min. Cavity T-2A

| Ports 1 and 2 | Port 3 | Assembly Model Code* |
|---------------|-----------|----------------------|
| 1/2" BSPP | 1/4" BSPP | RSFC-LAN-BCV |
| 3/4" BSPP | 1/4" BSPP | RSFC-LAN-BCW |



*Add modifier /S to order SG Iron for pressure rating over 210 bar.

| Ports 1 and 2 | Port 3 | Assembly Model Code* |
|---------------|-----------|----------------------|
| 1/2" BSPP | 1/4" BSPP | SXEA-LAN-BCV |
| 3/4" BSPP | 1/4" BSPP | SXEA-LAN-BCW |

*Add modifier /S to order SG Iron for pressure rating over 210 bar.

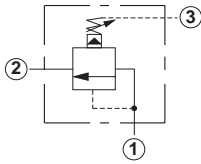
NOTES: Page 20 for cartridge models RS*C-*** and SX*A-*** shows performance curves, technical tips, and options. See page vii for technical information about line mount bodies including SAE flange pattern specifications. Consult the Sun Factory for other port sizes available in the bodies shown above.

Model Codes printed in red are Preferred Products and are readily available.

**THREE PORT PRESSURE SEQUENCING APPLICATIONS
(90 DEGREE BODIES)**

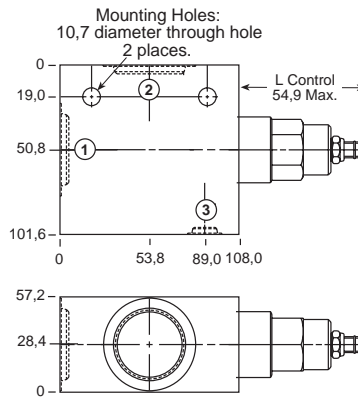
PILOT OPERATED ASSEMBLIES

Go to www.sunhydraulics.com for more product information.



0-240 L/min. Cavity T-17A

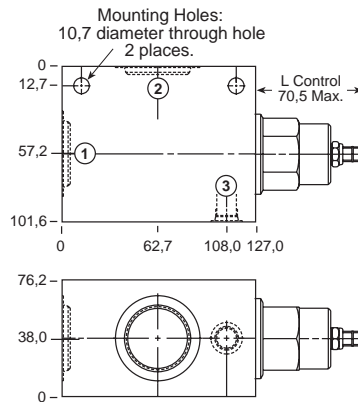
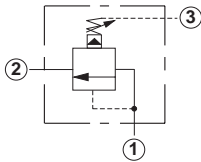
| Ports 1 and 2 | Port 3 | Assembly Model Code* |
|---------------|-----------|----------------------|
| 1" BSPP | 1/4" BSPP | RSHC-LAN-HCX |
| 1 1/4" BSPP | 1/4" BSPP | RSHC-LAN-HCY |



*Add modifier /S to order SG Iron for pressure rating over 210 bar.

0-480 L/min. Cavity T-19A

| Ports 1 and 2 | Port 3 | Assembly Model Code* |
|---------------|-----------|----------------------|
| 1" BSPP | 1/4" BSPP | RSJC-LAN-KCX |
| 1 1/4" BSPP | 1/4" BSPP | RSJC-LAN-KCY |



*Add modifier /S to order SG Iron for pressure rating over 210 bar.

NOTES: Page 20 for cartridge model RS*C-*** shows performance curves, technical tips, and options. See page vii for technical information about line mount bodies including SAE flange pattern specifications. Consult the Sun Factory for other port sizes available in the bodies shown above.
Model Codes printed in red are Preferred Products and are readily available.

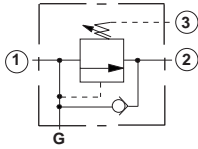
Line Mounted Assemblies

THREE PORT PRESSURE SEQUENCING APPLICATIONS (BODIES WITH REVERSE FREE FLOW CHECK)

PILOT OPERATED ASSEMBLIES

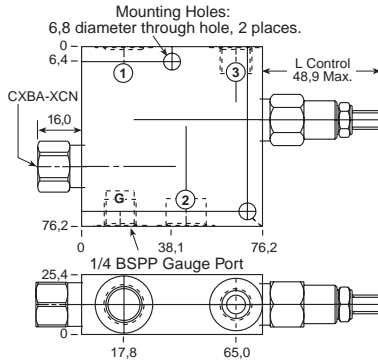
Go to www.sunhydraulics.com
for more product information.

DIRECT ACTING ASSEMBLIES



0-30 L/min. Cavity T-163A

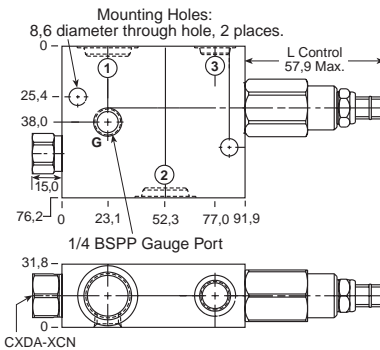
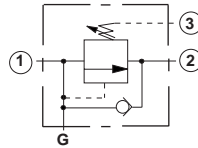
| Ports 1 and 2 | Port 3 | Assembly Model Code* |
|---------------|-----------|----------------------|
| 1/4" BSPP | 1/4" BSPP | RSBC-LAN-J6T |
| 3/8" BSPP | 1/4" BSPP | RSBC-LAN-J6U |



*Add modifier /S to order SG Iron for pressure rating over 210 bar.

0-60 L/min. Cavity T-11A

| Ports 1 and 2 | Port 3 | Assembly Model Code* |
|---------------|-----------|----------------------|
| 3/8" BSPP | 1/4" BSPP | RSDC-LAN-E6U |
| 1/2" BSPP | 1/4" BSPP | RSDC-LAN-E6V |



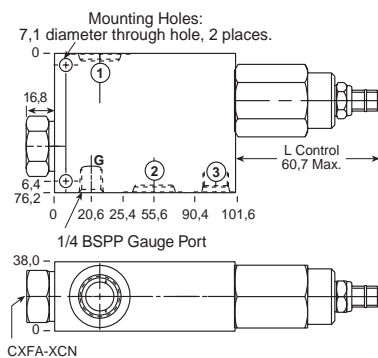
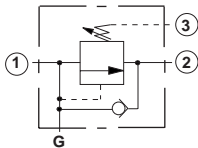
*Add modifier /S to order SG Iron for pressure rating over 210 bar.

| Ports 1 and 2 | Port 3 | Assembly Model Code* |
|---------------|-----------|----------------------|
| 3/8" BSPP | 1/4" BSPP | SXCA-LAN-E6U |
| 1/2" BSPP | 1/4" BSPP | SXCA-LAN-E6V |

*Add modifier /S to order SG Iron for pressure rating over 210 bar.

0-120 L/min. Cavity T-2A

| Ports 1 and 2 | Port 3 | Assembly Model Code* |
|---------------|-----------|----------------------|
| 1/2" BSPP | 1/4" BSPP | RSFC-LAN-B6V |
| 3/4" BSPP | 1/4" BSPP | RSFC-LAN-B6W |



*Add modifier /S to order SG Iron for pressure rating over 210 bar.

| Ports 1 and 2 | Port 3 | Assembly Model Code* |
|---------------|-----------|----------------------|
| 1/2" BSPP | 1/4" BSPP | SXEA-LAN-B6V |
| 3/4" BSPP | 1/4" BSPP | SXEA-LAN-B6W |

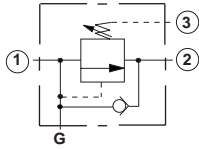
*Add modifier /S to order SG Iron for pressure rating over 210 bar.

NOTES: Page 20 for cartridge models RS*C-*** and SX*A-*** shows performance curves, technical tips, and options.
See page vii for technical information about line mount bodies including SAE flange pattern specifications.

THREE PORT PRESSURE SEQUENCING APPLICATIONS (BODIES WITH REVERSE FREE FLOW CHECK)

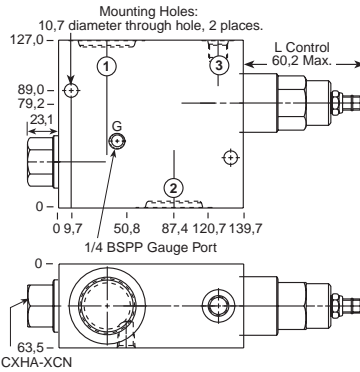
PILOT OPERATED ASSEMBLIES

Go to www.sunhydraulics.com for more product information.



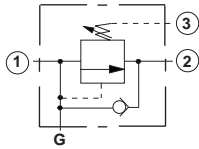
0-240 L/min. Cavity T-17A

| Ports 1 and 2 | Port 3 | Assembly Model Code* |
|---------------|-----------|----------------------|
| 1" BSPP | 1/4" BSPP | RSJC-LAN-K6X |
| 1 1/4" BSPP | 1/4" BSPP | RSJC-LAN-K6Y |

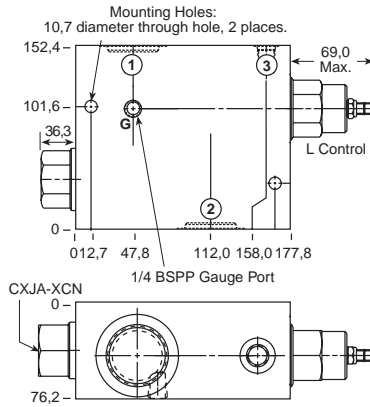


*Add modifier /S to order SG Iron for pressure rating over 210 bar.

0-480 L/min. Cavity T-19A



| Ports 1 and 2 | Port 3 | Assembly Model Code* |
|---------------|-----------|----------------------|
| 1" BSPP | 1/4" BSPP | RSJC-LAN-K6X |
| 1 1/4" BSPP | 1/4" BSPP | RSJC-LAN-K6Y |



*Add modifier /S to order SG Iron for pressure rating over 210 bar.

NOTES: Page 20 for cartridge model RS*C-*** shows performance curves, technical tips, and options.
See page vii for technical information about line mount bodies including SAE flange pattern specifications.
Consult the Sun Factory for other port sizes available in the bodies shown above.

Line Mounted Assemblies

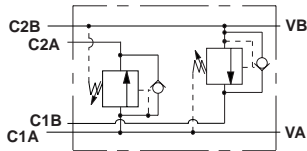
THREE PORT DUAL PRESSURE SEQUENCING APPLICATIONS (2 CAVITY BODIES WITH REVERSE FREE FLOW CHECKS)

The line-mounted dual sequencing assembly can be used in applications where two hydraulic cylinders are to be operated in a particular sequence when both extending and retracting. The block eliminates a great deal of pipework when compared to using conventional line mounted valves.

PILOT OPERATED ASSEMBLIES

Go to www.sunhydraulics.com for more product information.

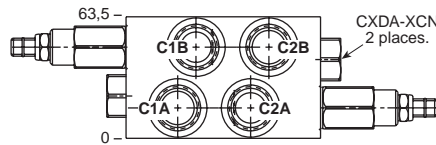
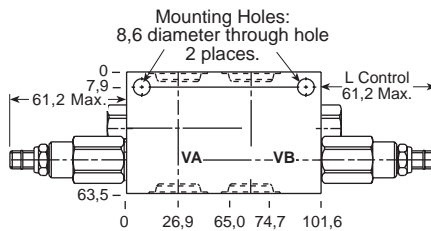
DIRECT ACTING ASSEMBLIES



| All Ports | Assembly Model Code* |
|-----------|----------------------|
| 3/8" BSPP | RSDC-LAN-E8U |
| 1/2" BSPP | RSDC-LAN-E8V |

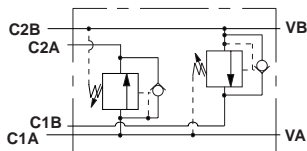
*Add modifier /S to order SG Iron for pressure rating over 210 bar.

0-60 L/min Cavity T-11A



| All Ports | Assembly Model Code* |
|-----------|----------------------|
| 3/8" BSPP | SXCA-LAN-E8U |
| 1/2" BSPP | SXCA-LAN-E8V |

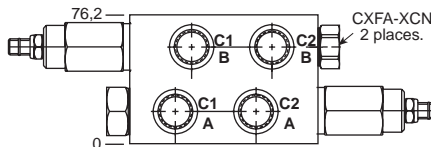
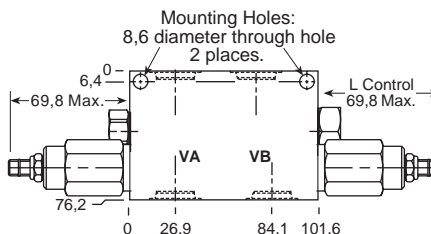
*Add modifier /S to order SG Iron for pressure rating over 210 bar.



| All Ports | Assembly Model Code* |
|-----------|----------------------|
| 1/2" BSPP | RSFC-LAN-B8V |
| 3/4" BSPP | RSFC-LAN-B8W |

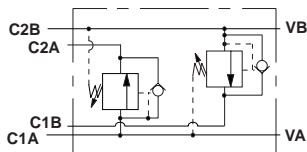
*Add modifier /S to order SG Iron for pressure rating over 210 bar.

0-120 L/min Cavity T-2A



| All Ports | Assembly Model Code* |
|-----------|----------------------|
| 1/2" BSPP | SXEA-LAN-B8V |
| 3/4" BSPP | SXEA-LAN-B8W |

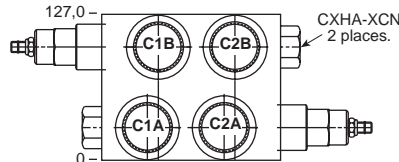
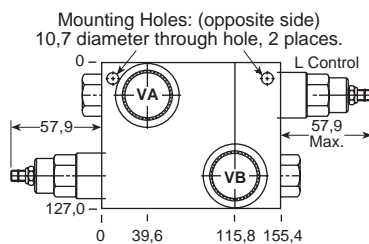
*Add modifier /S to order SG Iron for pressure rating over 210 bar.



| All Ports | Assembly Model Code* |
|-------------|----------------------|
| 1" BSPP | RSHC-LAN-H8X |
| 1 1/4" BSPP | RSHC-LAN-H8Y |

*Add modifier /S to order SG Iron for pressure rating over 210 bar.

0-240 L/min Cavity T-17A



NOTES: Page 20 for cartridge models RS*C-*** and SX*A-*** show performance curves, technical tips, and options. See page vii for technical information about line mount bodies including SAE flange pattern specifications. Consult the Sun Factory for other port sizes available in the bodies shown above.