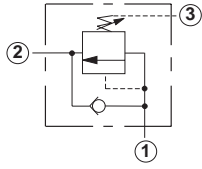


## Line Mounted Assemblies

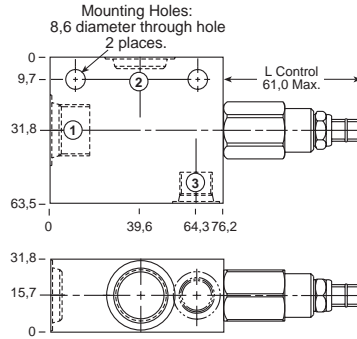
# THREE PORT PRESSURE SEQUENCING APPLICATIONS (90 DEGREE BODIES)

Go to [www.sunhydraulics.com](http://www.sunhydraulics.com)  
for more product information.

**DIRECT ACTING  
ASSEMBLIES**

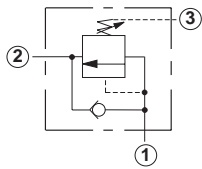


### 0-60 L/min. Cavity T-11A

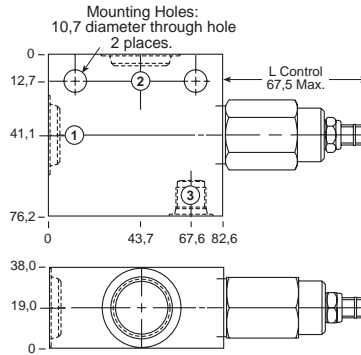


| Ports 1 and 2 | Port 3    | Assembly Model Code* |
|---------------|-----------|----------------------|
| 3/8" BSPP     | 1/4" BSPP | <b>SCCA-LAN-ECU</b>  |
| 1/2" BSPP     | 1/4" BSPP | <b>SCCA-LAN-ECV</b>  |

\*Add modifier **/S** to order SG Iron for pressure rating over 210 bar.



### 0-120 L/min. Cavity T-2A



| Ports 1 and 2 | Port 3    | Assembly Model Code* |
|---------------|-----------|----------------------|
| 3/8" BSPP     | 1/4" BSPP | <b>SCEA-LAN-BCU</b>  |
| 1/2" BSPP     | 1/4" BSPP | <b>SCEA-LAN-BCV</b>  |
| 3/4" BSPP     | 1/4" BSPP | <b>SCEA-LAN-BCW</b>  |

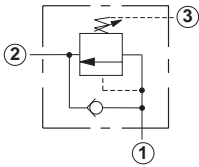
\*Add modifier **/S** to order SG Iron for pressure rating over 210 bar.

NOTES: Page 28 for cartridge model SC\*A-\*\*\* shows performance curves, technical tips, and options.  
See page vii for technical information about line mount bodies including SAE flange pattern specifications.  
Consult the Sun Factory for other port sizes available in the bodies shown above.  
Model Codes printed in red are Preferred Products and are readily available.

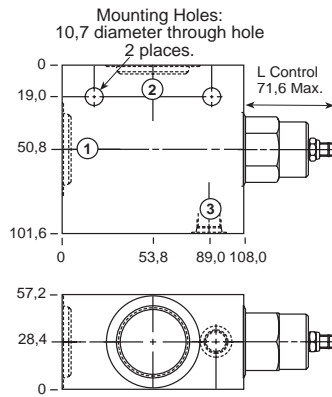
# THREE PORT PRESSURE SEQUENCING APPLICATIONS (90 DEGREE BODIES)

Go to [www.sunhydraulics.com](http://www.sunhydraulics.com)  
for more product information.

**DIRECT ACTING  
ASSEMBLIES**

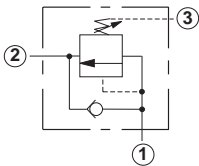


## 0-240 L/min. Cavity T-17A

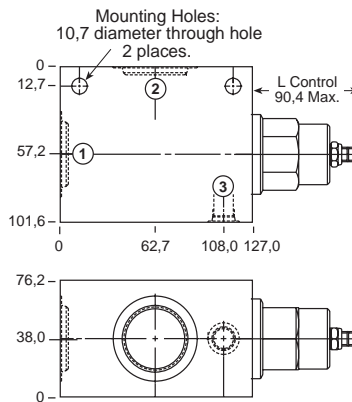


| Ports 1 and 2 | Port 3    | Assembly Model Code* |
|---------------|-----------|----------------------|
| 1" BSPP       | 1/4" BSPP | <b>SCGA-LAN-HCX</b>  |
| 1 1/4" BSPP   | 1/4" BSPP | <b>SCGA-LAN-HCY</b>  |

\*Add modifier **/S** to order SG Iron for pressure rating over 210 bar.



## 0-480 L/min. Cavity T-19A



| Ports 1 and 2 | Port 3    | Assembly Model Code* |
|---------------|-----------|----------------------|
| 1" BSPP       | 1/4" BSPP | <b>SCIA-LAN-KCX</b>  |
| 1 1/4" BSPP   | 1/4" BSPP | <b>SCIA-LAN-KCY</b>  |

\*Add modifier **/S** to order SG Iron for pressure rating over 210 bar.

NOTES: Page 28 for cartridge model SC\*A-\*\*\* shows performance curves, technical tips, and options.  
See page vii for technical information about line mount bodies including SAE flange pattern specifications.  
Consult the Sun Factory for other port sizes available in the bodies shown above.  
Model Codes printed in red are Preferred Products and are readily available.