

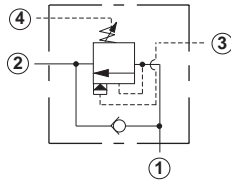
Line Mounted Assemblies

FOUR PORT LOAD CONTROL APPLICATIONS (90 DEGREE BODIES)

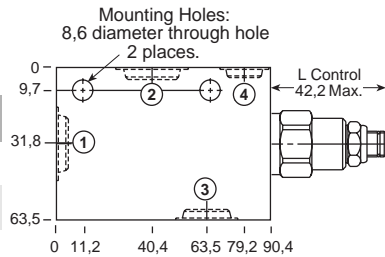
PILOT RATIO
3:1, 1:1

Go to www.sunhydraulics.com
for more product information.

PILOT RATIO
5:1, 2:1



0-60 L/min. Cavity T-21A

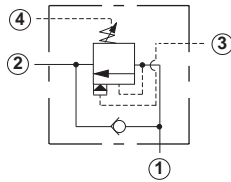


Ports 1 and 2	Ports 3 and 4	Assembly Model Code*
3/8" BSPP	3: 3/8" BSPP 4: 1/4" BSPP	CWC*-LHN-MAU
1/2" BSPP	3: 3/8" BSPP 4: 1/4" BSPP	CWC*-LHN-MAV

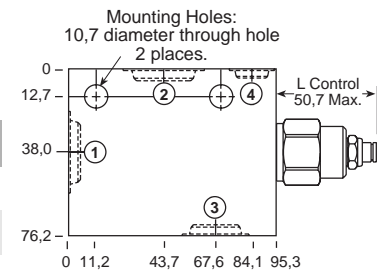
Ports 1 and 2	Ports 3 and 4	Assembly Model Code*
3/8" BSPP	3: 3/8" BSPP 4: 1/4" BSPP	CWC*-LGN-MAU
1/2" BSPP	3: 3/8" BSPP 4: 1/4" BSPP	CWC*-LGN-MAV

The asterisk () shown in the fourth digit of the model code indicates the counterbalance pilot ratio of the cartridge and must be specified by customer. See page 70. Add modifier /S to order SG Iron for pressure rating over 210 bar.

The asterisk () shown in the fourth digit of the model code indicates the counterbalance pilot ratio of the cartridge and must be specified by customer. See page 70. Add modifier /S to order SG Iron for pressure rating over 210 bar.



0-120 L/min. Cavity T-22A



Ports 1 and 2	Ports 3 and 4	Assembly Model Code*
1/2" BSPP	3: 1/2" BSPP 4: 1/4" BSPP	CWE*-LHN-NAV
3/4" BSPP	3: 1/2" BSPP 4: 1/4" BSPP	CWE*-LHN-NAW

Ports 1 and 2	Ports 3 and 4	Assembly Model Code*
1/2" BSPP	3: 1/2" BSPP 4: 1/4" BSPP	CWE*-LGN-NAV
3/4" BSPP	3: 1/2" BSPP 4: 1/4" BSPP	CWE*-LGN-NAW

The asterisk () shown in the fourth digit of the model code indicates the counterbalance pilot ratio of the cartridge and must be specified by customer. See page 70. Add modifier /S to order SG Iron for pressure rating over 210 bar.

The asterisk () shown in the fourth digit of the model code indicates the counterbalance pilot ratio of the cartridge and must be specified by customer. See page 70. Add modifier /S to order SG Iron for pressure rating over 210 bar.

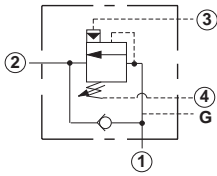
NOTES: Page 70 for cartridge models CW**-.*** shows performance curves, technical tips, and options.
See page vii for technical information about line mount bodies including SAE flange pattern specifications.
Consult the Sun Factory for other port sizes available in the bodies shown above.
Model Codes printed in red are Preferred Products and are readily available.

FOUR PORT LOAD CONTROL APPLICATIONS (90 DEGREE BODIES)

**PILOT RATIO
3:1, 1:1**

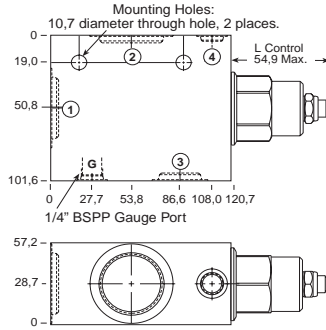
Go to www.sunhydraulics.com
for more product information.

**PILOT RATIO
5:1, 2:1**



0-240 L/min. Cavity T-23A

Ports 1 and 2	Ports 3 and 4	Assembly Model Code*
1" BSPP	1/4" BSPP	CWG*-LHN-PCX
1 1/4" BSPP	1/4" BSPP	CWG*-LHN-PCY

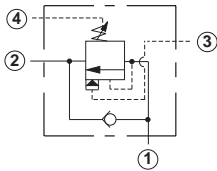


Ports 1 and 2	Ports 3 and 4	Assembly Model Code*
1" BSPP	1/4" BSPP	CWG*-LGN-PCX
1 1/4" BSPP	1/4" BSPP	CWG*-LGN-PCY

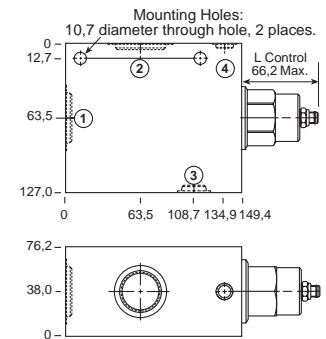
The asterisk () shown in the fourth digit of the model code indicates the counterbalance pilot ratio of the cartridge and must be specified by customer. See page 70. Add modifier /S to order SG Iron for pressure rating over 210 bar.

The asterisk () shown in the fourth digit of the model code indicates the counterbalance pilot ratio of the cartridge and must be specified by customer. See page 70. Add modifier /S to order SG Iron for pressure rating over 210 bar.

0-480 L/min. Cavity T-24A



Ports 1 and 2	Ports 3 and 4	Assembly Model Code*
1" BSPP	1/4" BSPP	CWI*-LHN-QCX
1 1/4" BSPP	1/4" BSPP	CWI*-LHN-QCY



Ports 1 and 2	Ports 3 and 4	Assembly Model Code*
1" BSPP	1/4" BSPP	CWI*-LGN-QCX
1 1/4" BSPP	1/4" BSPP	CWI*-LGN-QCY

The asterisk () shown in the fourth digit of the model code indicates the counterbalance pilot ratio of the cartridge and must be specified by customer. See page 70. Add modifier /S to order SG Iron for pressure rating over 210 bar.

The asterisk () shown in the fourth digit of the model code indicates the counterbalance pilot ratio of the cartridge and must be specified by customer. See page 70. Add modifier /S to order SG Iron for pressure rating over 210 bar.

NOTES: Page 70 for cartridge models CW**.* shows performance curves, technical tips, and options.
See page vii for technical information about line mount bodies including SAE flange pattern specifications.
Consult the Sun Factory for other port sizes available in the bodies shown above.
Model Codes printed in red are Preferred Products and are readily available.

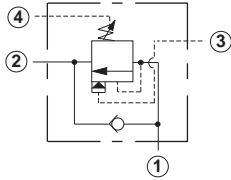
Line Mounted Assemblies

**FOUR PORT LOAD CONTROL APPLICATIONS
(2.00" SAE C62 FLANGE PORT BODY, 2 CAVITIES)**

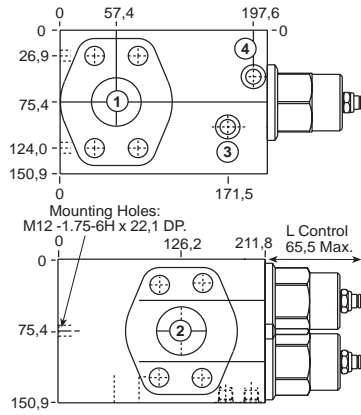
**PILOT RATIO
3:1, 1:1**

Go to www.sunhydraulics.com
for more product information.

**PILOT RATIO
4.5:1, 2:1**



0-960 L/min. Cavity T-24A



Ports 1 and 2	Ports 3 and 4	Assembly Model Code*
2" SAE C62	1/4" BSPP	CWI*-LHN-Z9T/M

Ports 1 and 2	Ports 3 and 4	Assembly Model Code*
2" SAE C62	1/4" BSPP	CWI*-LGN-Z9T/M

*Add modifier **/T** to order SG Iron for pressure rating over 210 bar.

*Add modifier **/T** to order SG Iron for pressure rating over 210 bar.

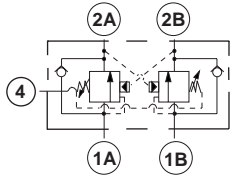
NOTES: Page 70 for cartridge models CW**-* shows performance curves, technical tips, and options.
See page vii for technical information about line mount bodies including SAE flange pattern specifications.
Consult the Sun Factory for other port sizes available in the bodies shown above.

**FOUR PORT LOAD CONTROL APPLICATIONS
(90 DEGREE CROSS-PILOTED BODIES, 2 CAVITIES, COMMON PORT 4)**

**PILOT RATIO
3:1, 1:1**

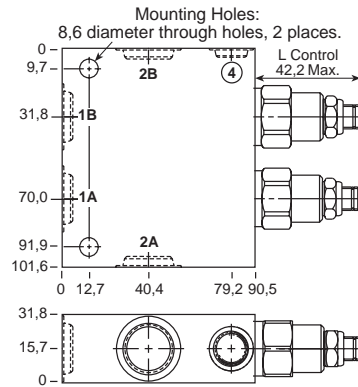
Go to www.sunhydraulics.com
for more product information.

**PILOT RATIO
5:1, 2:1**



0-60 L/min. Cavity T-21A

Ports 1A, 1B, 2A & 2B	Port 4	Assembly Model Code*
3/8" BSPP	1/4" BSPP	CWC*-LHN-XPU
1/2" BSPP	1/4" BSPP	CWC*-LHN-XPV



Ports 1A, 1B, 2A & 2B	Port 4	Assembly Model Code*
3/8" BSPP	1/4" BSPP	CWC*-LGN-XPU
1/2" BSPP	1/4" BSPP	CWC*-LGN-XPV

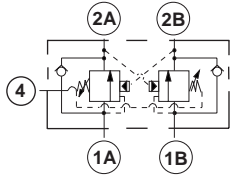
The asterisk () shown in the fourth digit of the model code indicates the counterbalance pilot ratio of the cartridge and must be specified by customer. See page 70. Add modifier /S to order SG Iron for pressure rating over 210 bar.

The asterisk () shown in the fourth digit of the model code indicates the counterbalance pilot ratio of the cartridge and must be specified by customer. See page 70. Add modifier /S to order SG Iron for pressure rating over 210 bar.

**PILOT RATIO
3:1, 1:1**

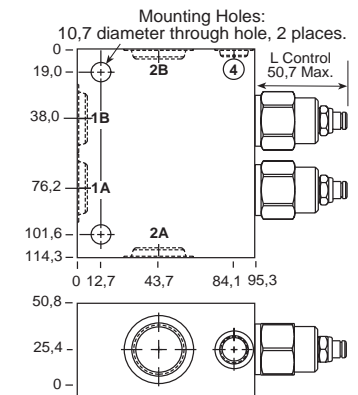
Go to www.sunhydraulics.com
for more product information.

**PILOT RATIO
5:1, 2:1**



0-120 L/min. Cavity T-22A

Ports 1A, 1B, 2A & 2B	Port 4	Assembly Model Code*
1/2" BSPP	1/4" BSPP	CWE*-LHN-XIV
3/4" BSPP	1/4" BSPP	CWE*-LHN-XIW



Ports 1A, 1B, 2A & 2B	Port 4	Assembly Model Code*
1/2" BSPP	1/4" BSPP	CWE*-LGN-XIV
3/4" BSPP	1/4" BSPP	CWE*-LGN-XIW

The asterisk () shown in the fourth digit of the model code indicates the counterbalance pilot ratio of the cartridge and must be specified by customer. See page 70. Add modifier /S to order SG Iron for pressure rating over 210 bar.

The asterisk () shown in the fourth digit of the model code indicates the counterbalance pilot ratio of the cartridge and must be specified by customer. See page 70. Add modifier /S to order SG Iron for pressure rating over 210 bar.

NOTES: Page 70 for cartridge model CW**_*** shows performance curves, technical tips, and options.
See page vii for technical information about line mount bodies including SAE flange pattern specifications.
Consult the Sun Factory for other port sizes available in the bodies shown above.

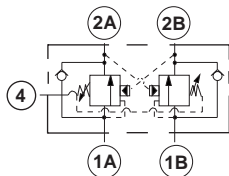
Line Mounted Assemblies

FOUR PORT LOAD CONTROL APPLICATIONS (90 DEGREE CROSS-PILOTED BODIES, 2 CAVITIES, COMMON PORT 4)

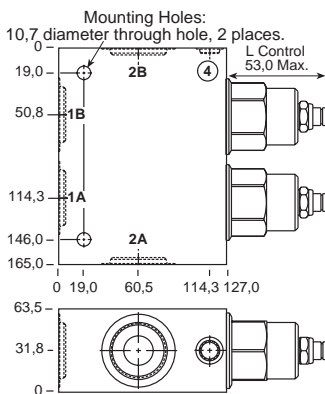
PILOT RATIO
3:1, 1:1

Go to www.sunhydraulics.com
for more product information.

PILOT RATIO
5:1, 2:1



0-240 L/min. Cavity T-23A



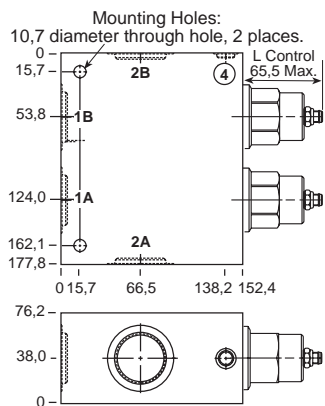
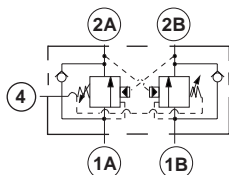
Ports 1A, 1B, 2A & 2B	Port 4	Assembly Model Code*
1" BSPP	1/4" BSPP	CWG*-LHN-XXM
1 1/4" BSPP	1/4" BSPP	CWG*-LHN-XY

The asterisk () shown in the fourth digit of the model code indicates the counterbalance pilot ratio of the cartridge and must be specified by customer. See page 70. Add modifier /S to order SG Iron for pressure rating over 210 bar.

Ports 1A, 1B, 2A & 2B	Port 4	Assembly Model Code*
1" BSPP	1/4" BSPP	CWG*-LGN-XXM
1 1/4" BSPP	1/4" BSPP	CWG*-LGN-XY

The asterisk () shown in the fourth digit of the model code indicates the counterbalance pilot ratio of the cartridge and must be specified by customer. See page 70. Add modifier /S to order SG Iron for pressure rating over 210 bar.

0-480 L/min. Cavity T-24A



Ports 1A, 1B, 2A & 2B	Port 4	Assembly Model Code*
1" BSPP	1/4" BSPP	CWI*-LHN-XLX
1 1/4" BSPP	1/4" BSPP	CXI*-LHN-XLY

The asterisk () shown in the fourth digit of the model code indicates the counterbalance pilot ratio of the cartridge and must be specified by customer. See page 70. Add modifier /S to order SG Iron for pressure rating over 210 bar.

Ports 1A, 1B, 2A & 2B	Port 4	Assembly Model Code*
1" BSPP	1/4" BSPP	CWI*-LGN-XLX
1 1/4" BSPP	1/4" BSPP	CWI*-LGN-XLY

The asterisk () shown in the fourth digit of the model code indicates the counterbalance pilot ratio of the cartridge and must be specified by customer. See page 70. Add modifier /S to order SG Iron for pressure rating over 210 bar.

NOTES: Page 70 for cartridge model CW**.* shows performance curves, technical tips, and options.
See page vii for technical information about line mount bodies including SAE flange pattern specifications.
Consult the Sun Factory for other port sizes available in the bodies shown above.