

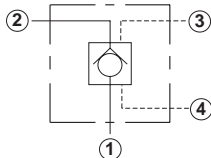
## Line Mounted Assemblies

# FOUR PORT PILOT-TO-OPEN CHECK APPLICATIONS (90 DEGREE BODIES)

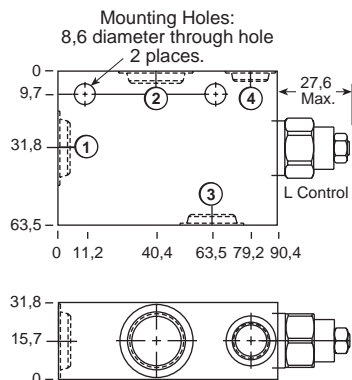
### VENTED

Go to [www.sunhydraulics.com](http://www.sunhydraulics.com)  
for more product information.

### 0-60 L/min. Cavity T-21A

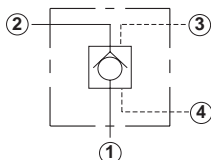


Ports 1 and 2	Ports 3 and 4	Assembly Model Code*
1/4" BSPP	3: 1/4" BSPP 4: 1/4" BSPP	<b>CVCV-XCN-MAT</b>
3/8" BSPP	3: 3/8" BSPP 4: 1/4" BSPP	<b>CVCV-XCN-MAU</b>
1/2" BSPP	3: 3/8" BSPP 4: 1/4" BSPP	<b>CVCV-XCN-MAV</b>

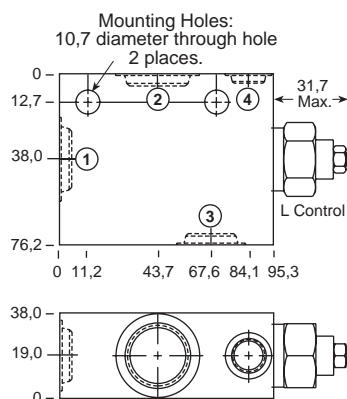


\*Add modifier /S to order SG Iron for pressure rating over 210 bar.

### 0-120 L/min. Cavity T-22A



Ports 1 and 2	Ports 3 and 4	Assembly Model Code*
3/8" BSPP	3: 3/8" BSPP 4: 1/4" BSPP	<b>CVEV-XCN-NAU</b>
1/2" BSPP	3: 1/2" BSPP 4: 1/4" BSPP	<b>CVEV-XCN-NAV</b>
3/4" BSPP	3: 1/2" BSPP 4: 1/4" BSPP	<b>CVEV-XCN-NAW</b>



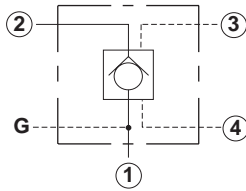
\*Add modifier /S to order SG Iron for pressure rating over 210 bar.

NOTES: Page 94 for cartridge model CV\*V-\*\*\* shows performance curves, technical tips, and options.  
See page vii for technical information about line mount bodies including SAE flange pattern specifications.  
Consult the Sun Factory for other port sizes available in the bodies shown above.  
Model Codes printed in red are Preferred Products and are readily available.

# FOUR PORT PILOT-TO-OPEN CHECK APPLICATIONS (90 DEGREE BODIES)

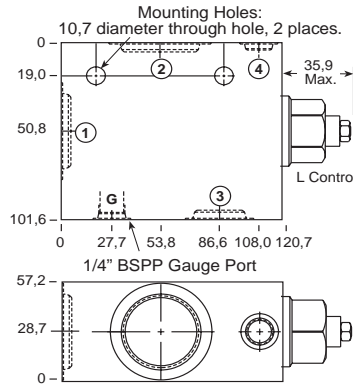
## VENTED

Go to [www.sunhydraulics.com](http://www.sunhydraulics.com) for more product information.

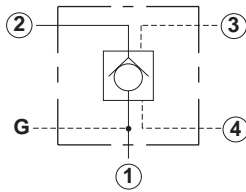


### 0-240 L/min. Cavity T-23A

Ports 1 and 2	Ports 3 and 4	Assembly Model Code*
3/4" BSPP	1/4" BSPP	<b>CVGV-XCN-PCW</b>
1" BSPP	1/4" BSPP	<b>CVGV-XCN-PCX</b>
1 1/4" BSPP	1/4" BSPP	<b>CVGV-XCN-PCY</b>

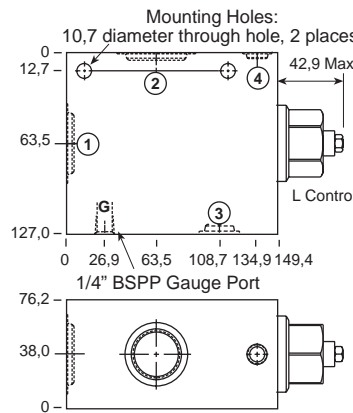


\*Add modifier /S to order SG Iron for pressure rating over 210 bar.



### 0-480 L/min. Cavity T-24A

Ports 1 and 2	Ports 3 and 4	Assembly Model Code*
1" BSPP	1/4" BSPP	<b>CVIV-XCN-QCX</b>
1 1/4" BSPP	1/4" BSPP	<b>CVIV-XCN-QCY</b>



\*Add modifier /S to order SG Iron for pressure rating over 210 bar.

NOTES: Page 94 for cartridge model CV\*V-\*\*\* shows performance curves, technical tips, and options.  
See page vii for technical information about line mount bodies including SAE flange pattern specifications.  
Consult the Sun Factory for other port sizes available in the bodies shown above.  
Model Codes printed in red are Preferred Products and are readily available.

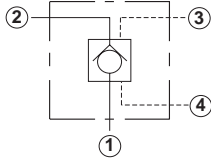
Line Mounted Assemblies

**FOUR PORT PILOT-TO-OPEN CHECK APPLICATIONS  
(2.00" SAE C62 FLANGE PORT BODY, 2 CAVITIES)**

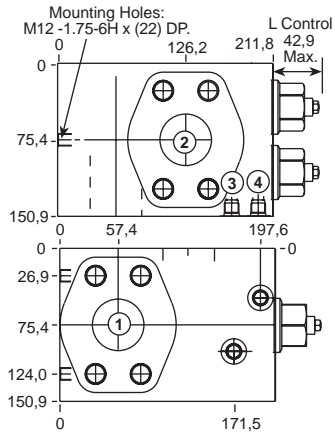
VENTED

Go to [www.sunhydraulics.com](http://www.sunhydraulics.com)  
for more product information.

**0-960 L/min. Cavity T-24A**



Ports 1 and 2	Ports 3 and 4	Assembly Model Code*
2" SAE C62	3: 1/4" BSPP 4: 1/4" BSPP	<b>CVIV-XCN-Z9T/M</b>



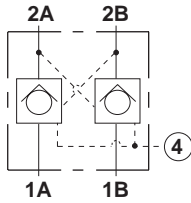
\*Add modifier **T** to order SG Iron for pressure rating over 210 bar.

NOTES: Page 94 for cartridge model CV\*V-\*\*\* shows performance curves, technical tips, and options.  
See page vii for technical information about line mount bodies including SAE flange pattern specifications.  
Consult the Sun Factory for other port sizes available in the bodies shown above.

**FOUR PORT PILOT-TO-OPEN CHECK APPLICATIONS  
(90 DEGREE CROSS-PILOTED BODIES, 2 CAVITIES, COMMON PORT 4)**

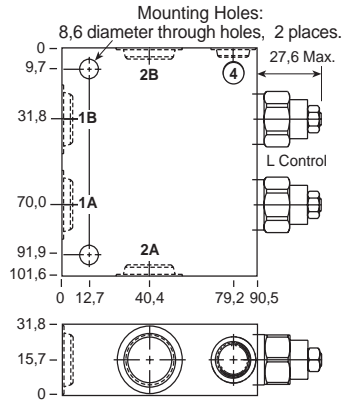
**VENTED**

Go to [www.sunhydraulics.com](http://www.sunhydraulics.com) for more product information.

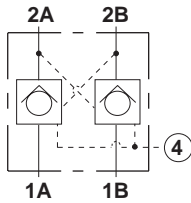


**0-60 L/min. Cavity T-21A**

Ports 1A, 1B, 2A & 2B	Port 4	Assembly Model Code*
3/8" BSPP	1/4" BSPP	<b>CVCV-XCN-XPU</b>
1/2" BSPP	1/4" BSPP	<b>CVCV-XCN-XPV</b>

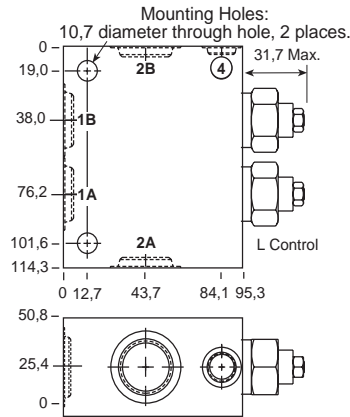


\*Add modifier **/S** to order SG Iron for pressure rating over 210 bar.



**0-120 L/min. Cavity T-22A**

Ports 1A, 1B, 2A & 2B	Port 4	Assembly Model Code*
1/2" BSPP	1/4" BSPP	<b>CVEV-XCN-XIV</b>
3/4" BSPP	1/4" BSPP	<b>CVEV-XCN-XIW</b>



\*Add modifier **/S** to order SG Iron for pressure rating over 210 bar.

NOTES: Page 94 for cartridge model CV\*V-\*\*\* shows performance curves, technical tips, and options.  
See page vii for technical information about line mount bodies including SAE flange pattern specifications.  
Consult the Sun Factory for other port sizes available in the bodies shown above.

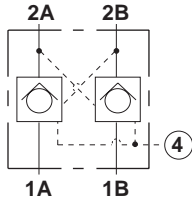
## Line Mounted Assemblies

# FOUR PORT PILOT-TO-OPEN CHECK APPLICATIONS (90 DEGREE CROSS-PILOTED BODIES, 2 CAVITIES, COMMON PORT 4)

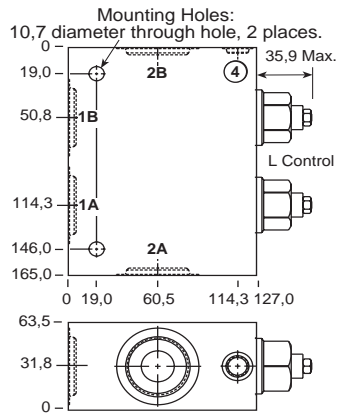
### VENTED

Go to [www.sunhydraulics.com](http://www.sunhydraulics.com)  
for more product information.

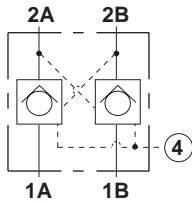
### 0-240 L/min. Cavity T-23A



Ports 1A, 1B, 2A & 2B	Port 4	Assembly Model Code*
1" BSPP	1/4" BSPP	CVGV-XCN-XMU
1 1/4" BSPP	1/4" BSPP	CVGV-XCN-XMV

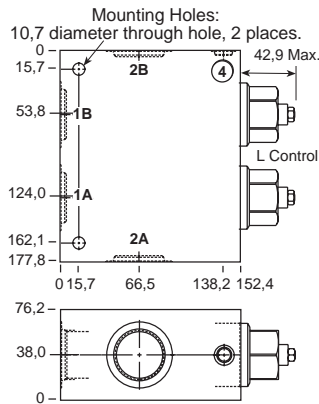


\*Add modifier /S to order SG Iron for pressure rating over 210 bar.



Ports 1A, 1B, 2A & 2B	Port 4	Assembly Model Code*
1" BSPP	1/4" BSPP	CVIV-XCN-XLX
1 1/4" BSPP	1/4" BSPP	CVIV-XCN-XLY

### 0-480 L/min. Cavity T-24A



\*Add modifier /S to order SG Iron for pressure rating over 210 bar.

NOTES: Page 94 for cartridge model CV\*V-\*\*\* shows performance curves, technical tips, and options.  
See page vii for technical information about line mount bodies including SAE flange pattern specifications.  
Consult the Sun Factory for other port sizes available in the bodies shown above.