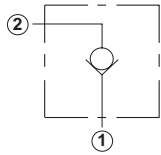


## Line Mounted Assemblies

TWO PORT FLOW CONTROL APPLICATIONS  
(90 DEGREE BODIES)FREE FLOW  
Port 1 to Port 2

0-40 L/min.

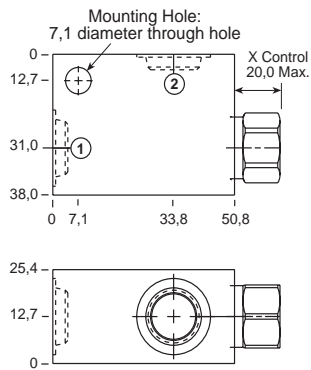


Ports 1 and 2	Assembly Model Code*
1/4" BSPP	<b>CXBA-X*N-AAT</b>
3/8" BSPP	<b>CXBA-X*N-AAU</b>

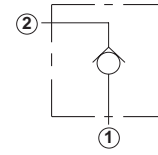
\*Add modifier /S to order SG Iron for pressure rating over 210 bar.

Go to [www.sunhydraulics.com](http://www.sunhydraulics.com)  
for more product information.

Cavity T-162A

FREE FLOW  
Port 2 to Port 1

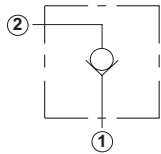
0-30 L/min.



Ports 1 and 2	Assembly Model Code*
1/4" BSPP	<b>CXAD-X*N-AAT</b>
3/8" BSPP	<b>CXAD-X*N-AAU</b>

\*Add modifier /S to order SG Iron for pressure rating over 210 bar.

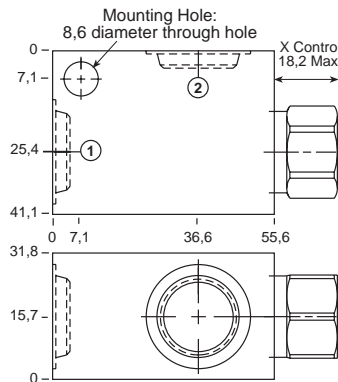
0-80 L/min.



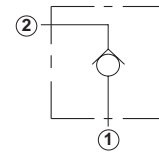
Ports 1 and 2	Assembly Model Code*
1/4" BSPP	<b>CXDA-X*N-GAT</b>
3/8" BSPP	<b>CXDA-X*N-GAU</b>

\*Add modifier /S to order SG Iron for pressure rating over 210 bar.

Cavity T-13A



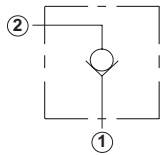
0-60 L/min.



Ports 1 and 2	Assembly Model Code*
1/4" BSPP	<b>CXCD-X*N-GAT</b>
3/8" BSPP	<b>CXCD-X*N-GAU</b>

\*Add modifier /S to order SG Iron for pressure rating over 210 bar.

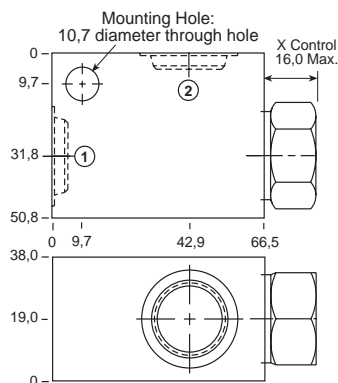
0-160 L/min.



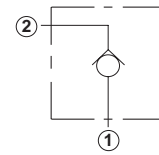
Ports 1 and 2	Assembly Model Code*
3/8" BSPP	<b>CXFA-X*N-DAU</b>
1/2" BSPP	<b>CXFA-X*N-DAV</b>

\*Add modifier /S to order SG Iron for pressure rating over 210 bar.

Cavity T-5A



0-120 L/min.



Ports 1 and 2	Assembly Model Code*
3/8" BSPP	<b>CXED-X*N-DAU</b>
1/2" BSPP	<b>CXED-X*N-DAV</b>

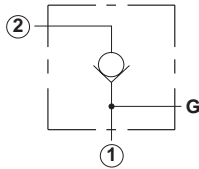
\*Add modifier /S to order SG Iron for pressure rating over 210 bar.

NOTES: Page 102 for cartridge models CX\*A-\*\*\* and CX\*D-\*\*\* shows performance curves, technical tips, and options.  
See page vii for technical information about line mount bodies including SAE flange pattern specifications.  
Consult the Sun Factory for other port sizes available in the bodies shown above.  
Model Codes printed in red are Preferred Products and are readily available.

**TWO PORT FLOW CONTROL APPLICATIONS  
(90 DEGREE BODIES)**

**FREE FLOW  
Port 1 to Port 2**

**0-320 L/min.**

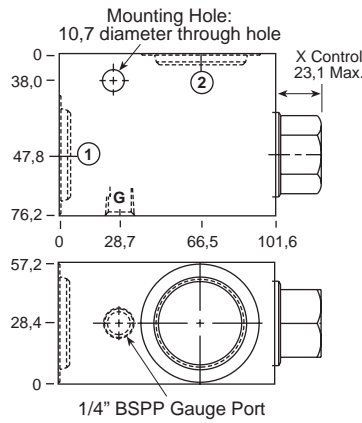


Ports 1 and 2	Assembly Model Code*
3/4" BSPP	<b>CXHA-X*N-IAW</b>
1" BSPP	<b>CXHA-X*N-IAX</b>
1 1/4" BSPP	<b>CXHA-X*N-IAY</b>

\*Add modifier /S to order SG Iron for pressure rating over 210 bar.

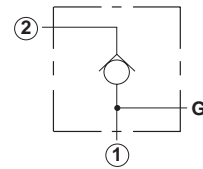
Go to [www.sunhydraulics.com](http://www.sunhydraulics.com) for more product information.

**Cavity T-16A**



**FREE FLOW  
Port 2 to Port 1**

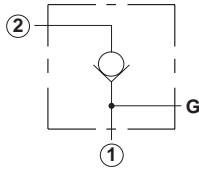
**0-240 L/Min**



Ports 1 and 2	Assembly Model Code*
3/4" BSPP	<b>CXGD-X*N-IAW</b>
1" BSPP	<b>CXGD-X*N-IAX</b>
1 1/4" BSPP	<b>CXGD-X*N-IAY</b>

\*Add modifier /S to order SG Iron for pressure rating over 210 bar.

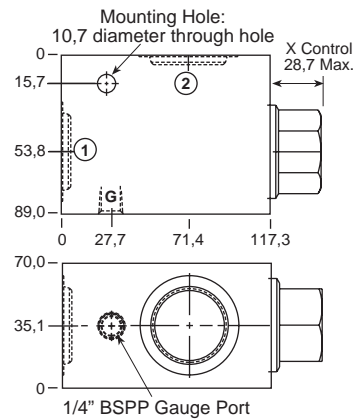
**0-640 L/min.**



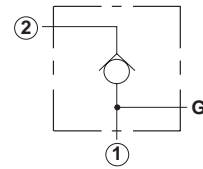
Ports 1 and 2	Assembly Model Code*
3/4" BSPP	<b>CXJA-X*N-LAW</b>
1" BSPP	<b>CXJA-X*N-LAX</b>
1 1/4" BSPP	<b>CXJA-X*N-LAY</b>

\*Add modifier /S to order SG Iron for pressure rating over 210 bar.

**Cavity T-18A**



**0-480 L/Min**



Ports 1 and 2	Assembly Model Code*
3/4" BSPP	<b>CXID-X*N-LAW</b>
1" BSPP	<b>CXID-X*N-LAX</b>
1 1/4" BSPP	<b>CXID-X*N-LAY</b>

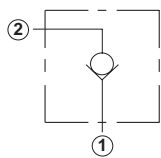
\*Add modifier /S to order SG Iron for pressure rating over 210 bar.

NOTES: Page 102 for cartridge models CX\*A-\*\*\* and CX\*D-\*\*\* shows performance curves, technical tips, and options. See page vii for technical information about line mount bodies including SAE flange pattern specifications. Consult the Sun Factory for other port sizes available in the bodies shown above. Model Codes printed in red are Preferred Products and are readily available.

## Line Mounted Assemblies

TWO PORT FLOW CONTROL APPLICATIONS  
(INLINE BODIES)FREE FLOW  
Port 1 to Port 2

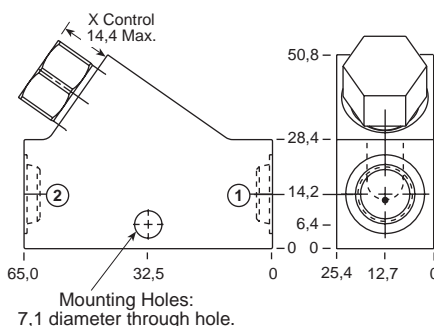
0-40 L/min.



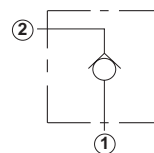
Ports 1 and 2	Assembly Model Code*
1/4" BSPP	<b>CXBA-X*N-ACT</b>
3/8" BSPP	<b>CXBA-X*N-ACU</b>

Go to [www.sunhydraulics.com](http://www.sunhydraulics.com)  
for more product information.

Cavity T-162A

FREE FLOW  
Port 2 to Port 1

0-30 L/min.

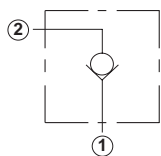


Ports 1 and 2	Assembly Model Code*
1/4" BSPP	<b>CXAD-X*N-ACT</b>
3/8" BSPP	<b>CXAD-X*N-ACU</b>

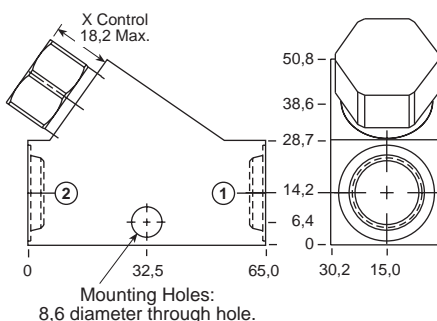
\*Add modifier /S to order SG Iron for pressure rating  
over 210 bar.\*Add modifier /S to order SG Iron for pressure rating  
over 210 bar.

0-80 L/min.

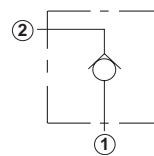
Cavity T-13A



Ports 1 and 2	Assembly Model Code*
1/4" BSPP	<b>CXDA-X*N-GCT</b>
3/8" BSPP	<b>CXDA-X*N-GCU</b>



0-60 L/min.

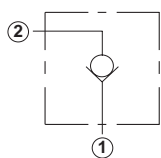


Ports 1 and 2	Assembly Model Code*
1/4" BSPP	<b>CXCD-X*N-GCT</b>
3/8" BSPP	<b>CXCD-X*N-GCU</b>

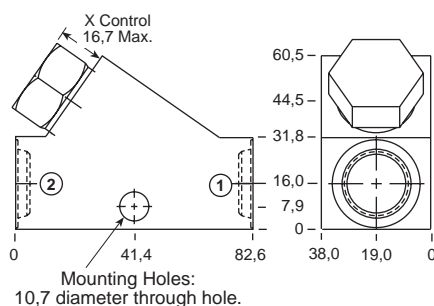
\*Add modifier /S to order SG Iron for pressure rating  
over 210 bar.\*Add modifier /S to order SG Iron for pressure rating  
over 210 bar.

0-160 L/min.

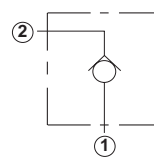
Cavity T-5A



Ports 1 and 2	Assembly Model Code*
3/8" BSPP	<b>CXFA-X*N-DCU</b>
1/2" BSPP	<b>CXFA-X*N-DCV</b>



0-120 L/min.



Ports 1 and 2	Assembly Model Code*
3/8" BSPP	<b>CXED-X*N-DCU</b>
1/2" BSPP	<b>CXED-X*N-DCV</b>

\*Add modifier /S to order SG Iron for pressure rating  
over 210 bar.\*Add modifier /S to order SG Iron for pressure rating  
over 210 bar.

NOTES: Page 102 for cartridge models CX\*A-\*\*\* and CX\*D-\*\*\* shows performance curves, technical tips, and options.  
See page vii for technical information about line mount bodies including SAE flange pattern specifications.  
Consult the Sun Factory for other port sizes available in the bodies shown above.  
Model Codes printed in red are Preferred Products and are readily available.

**TWO PORT FLOW CONTROL APPLICATIONS  
(INLINE/INLINE 1.50"/2.00" SAE C61 FLANGE PORT BODIES)**

**FREE FLOW  
Port 1 to Port 2**

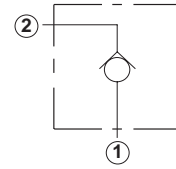
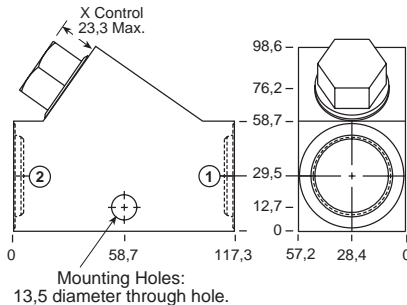
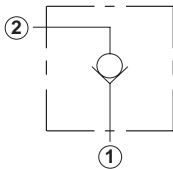
Go to [www.sunhydraulics.com](http://www.sunhydraulics.com)  
for more product information.

**FREE FLOW  
Port 2 to Port 1**

**0-320 L/min.**

**Cavity T-16A**

**0-240 L/min.**



Ports 1 and 2	Assembly Model Code*
3/4" BSPP	<b>CXHA-X*N-ICW</b>
1" BSPP	<b>CXHA-X*N-ICX</b>
1 1/4" BSPP	<b>CXHA-X*N-ICY</b>

Ports 1 and 2	Assembly Model Code*
3/4" BSPP	<b>CXGD-X*N-ICW</b>
1" BSPP	<b>CXGD-X*N-ICX</b>
1 1/4" BSPP	<b>CXGD-X*N-ICY</b>

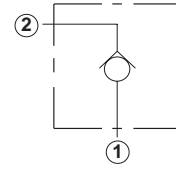
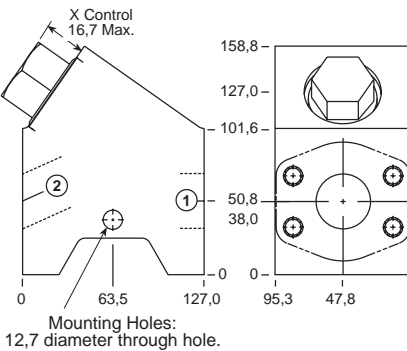
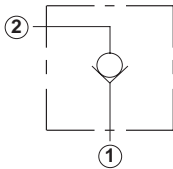
\*Add modifier /S to order SG Iron for pressure rating over 210 bar.

\*Add modifier /S to order SG Iron for pressure rating over 210 bar.

**0-640 L/min.**

**Cavity T-18A**

**0-480 L/min.**



Ports 1 and 2	Assembly Model Code*
1 1/2" SAE C61	<b>CXJA-X*N-ZLS/M</b>

Ports 1 and 2	Assembly Model Code*
1 1/2" SAE C61	<b>CXID-X*N-ZLS/M</b>

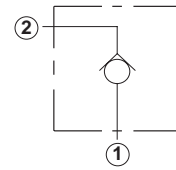
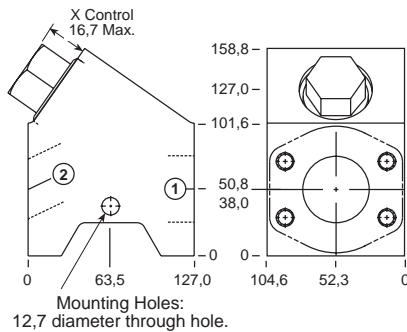
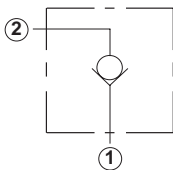
\*Add modifier /T to order SG Iron for pressure rating over 210 bar.

\*Add modifier /T to order SG Iron for pressure rating over 210 bar.

**0-640 L/min.**

**Cavity T-18A**

**0-480 L/min.**



Ports 1 and 2	Assembly Model Code*
2" SAE C61	<b>CXJA-X*N-ZLR/M</b>

Ports 1 and 2	Assembly Model Code*
2" SAE C61	<b>CXID-X*N-ZLR/M</b>

\*Add modifier /T to order SG Iron for pressure rating over 210 bar.

\*Add modifier /T to order SG Iron for pressure rating over 210 bar.

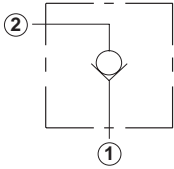
NOTES: Page 102 for cartridge models CX\*A-\*\*\* and CX\*D-\*\*\* shows performance curves, technical tips, and options. See page vii for technical information about line mount bodies including SAE flange pattern specifications. Consult the Sun Factory for other port sizes available in the bodies shown above. Model Codes printed in red are Preferred Products and are readily available.

## Line Mounted Assemblies

## TWO PORT FLOW CONTROL APPLICATIONS (2.00" SAE C61/C62 FLANGE PORT BODIES, 2 PORT CAVITY IN PARALLEL)

FREE FLOW  
Port 1 to Port 2

0-1280 L/min.



Ports  
1 and 2

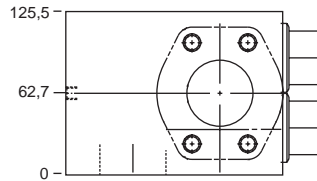
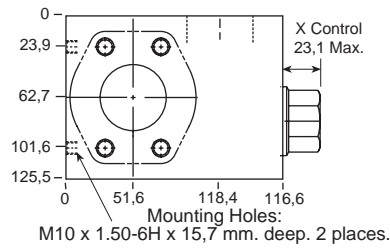
2" SAE C61

Assembly  
Model Code\*

**CXJA-X\*N-XZY/M**

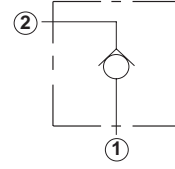
Go to [www.sunhydraulics.com](http://www.sunhydraulics.com)  
for more product information.

Cavity T-18A



FREE FLOW  
Port 2 to Port 1

0-960 L/min.



Ports  
1 and 2

2" SAE C61

Assembly  
Model Code\*

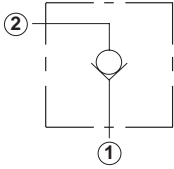
**CXID-X\*N-XZY/M**

\*Add modifier **T** to order SG Iron for pressure rating  
over 210 bar.

0-1280 L/min.

Cavity T-18A

0-960 L/min.

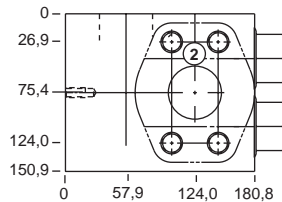
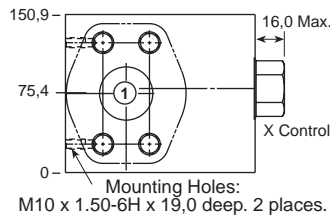


Ports  
1 and 2

2" SAE C62

Assembly  
Model Code\*

**CXJA-X\*N-VTN/M**



Ports  
1 and 2

2" SAE C62

Assembly  
Model Code\*

**CXID-X\*N-VTN/M**

\*Add modifier **T** to order SG Iron for pressure rating  
over 210 bar.

NOTES: Page 102 for cartridge model CX\*A-\*\*\* shows performance curves, technical tips, and options.  
See page vii for technical information about line mount bodies including SAE flange pattern specifications.  
Consult the Sun Factory for other port sizes available in the bodies shown above.