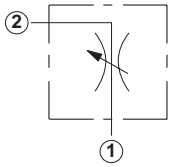


## Line Mounted Assemblies

TWO PORT FLOW CONTROL APPLICATIONS  
(90 DEGREE BODIES)

## FULLY ADJUSTABLE NEEDLE

Ports  
1 and 2

1/4" BSPP

3/8" BSPP

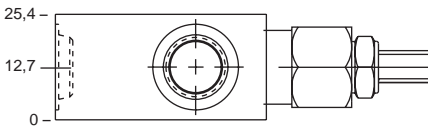
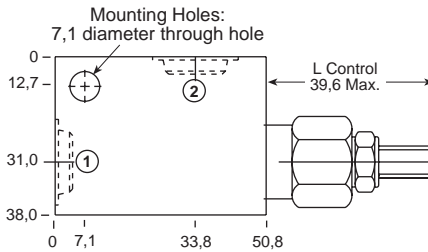
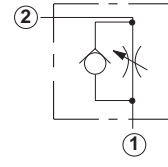
Assembly  
Model Code\*

NFBC-L\*N-AAT

NFBC-L\*N-AAU

Go to [www.sunhydraulics.com](http://www.sunhydraulics.com)  
for more product information.

## 0-4,0 mm Cavity T-162A

\*Add modifier /S to order SG Iron for pressure rating  
over 210 bar.FULLY ADJUSTABLE NEEDLE WITH  
REVERSE FREE FLOW CHECKPorts  
1 and 2

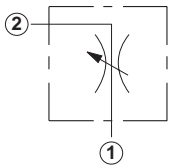
1/4" BSPP

3/8" BSPP

Assembly  
Model Code\*

NCBB-L\*N-AAT

NCBB-L\*N-AAU

\*Add modifier /S to order SG Iron for pressure rating  
over 210 bar.Ports  
1 and 2

1/4" BSPP

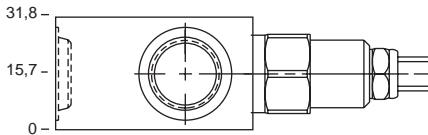
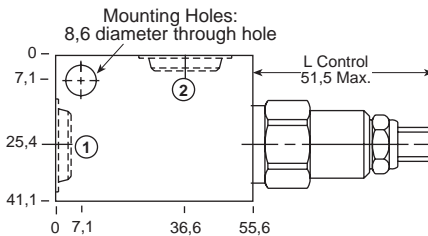
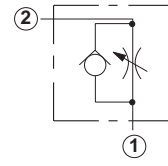
3/8" BSPP

Assembly  
Model Code\*

NFCC-L\*N-GAT

NFCC-L\*N-GAU

## 0-4,8 mm Cavity T-13A

\*Add modifier /S to order SG Iron for pressure rating  
over 210 bar.Ports  
1 and 2

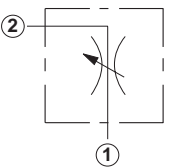
1/4" BSPP

3/8" BSPP

Assembly  
Model Code\*

NCBB-L\*N-GAT

NCBB-L\*N-GAU

\*Add modifier /S to order SG Iron for pressure rating  
over 210 bar.Ports  
1 and 2

3/8" BSPP

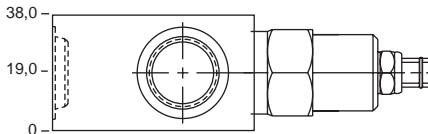
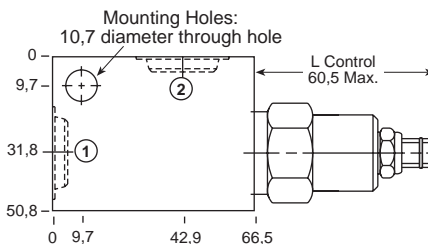
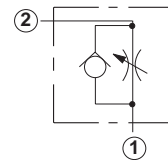
1/2" BSPP

Assembly  
Model Code\*

NFDC-L\*N-DAU

NFDC-L\*N-DAV

## 0-6,3 mm Cavity T-5A

\*Add modifier /S to order SG Iron for pressure rating  
over 210 bar.Ports  
1 and 2

3/8" BSPP

1/2" BSPP

Assembly  
Model Code\*

NCEB-L\*N-DAU

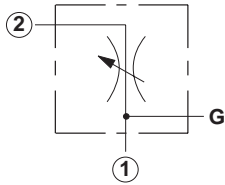
NCEB-L\*N-DAV

\*Add modifier /S to order SG Iron for pressure rating  
over 210 bar.

NOTES: Page 110 for cartridge models NF\*C-\*\*\* and NC\*B-\*\*\* shows performance curves, technical tips, and options.  
See page vii for technical information about line mount bodies including SAE flange pattern specifications.  
Consult the Sun Factory for other port sizes available in the bodies shown above.  
Model Codes printed in red are Preferred Products and are readily available.

**TWO PORT FLOW CONTROL APPLICATIONS  
(90 DEGREE BODIES)**

**FULLY ADJUSTABLE**

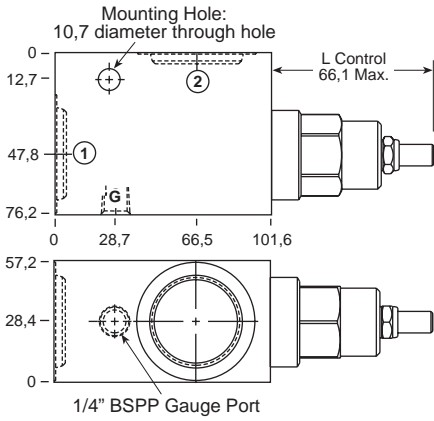


Ports 1 and 2	Assembly Model Code*
3/4" BSPP	<b>NFEC-L*N-IAW</b>
1" BSPP	<b>NFEC-L*N-IAX</b>
1 1/4" BSPP	<b>NFEC-L*N-IAZ</b>

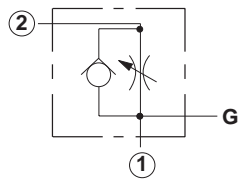
\*Add modifier /S to order SG Iron for pressure rating over 210 bar.

Go to [www.sunhydraulics.com](http://www.sunhydraulics.com) for more product information.

**0-9,6 mm Cavity T-16A**



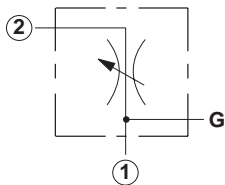
**FULLY ADJUSTABLE WITH REVERSE FREE FLOW CHECK**



Ports 1 and 2	Assembly Model Code*
3/4" BSPP	<b>NCFB-L*N-IAW</b>
1" BSPP	<b>NCFB-L*N-IAZ</b>
1 1/4" BSPP	<b>NCFB-L*N-IAY</b>

\*Add modifier /S to order SG Iron for pressure rating over 210 bar.

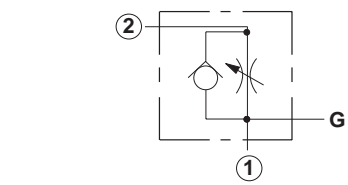
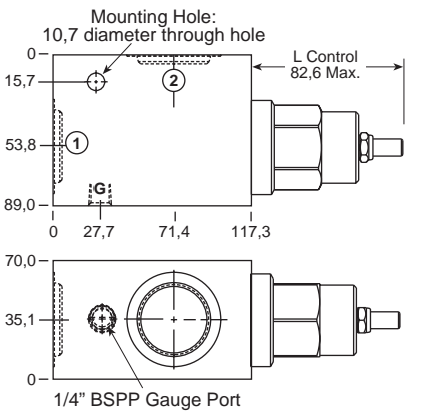
**FULLY ADJUSTABLE**



Ports 1 and 2	Assembly Model Code*
1" BSPP	<b>NFFC-L*N-LAX</b>
1 1/4" BSPP	<b>NFFC-L*N-LAY</b>

\*Add modifier /S to order SG Iron for pressure rating over 210 bar.

**0-14,2 mm Cavity T-18A**



Ports 1 and 2	Assembly Model Code*
1" BSPP	<b>NCGB-L*N-LAX</b>
1 1/4" BSPP	<b>NCGB-L*N-LAY</b>

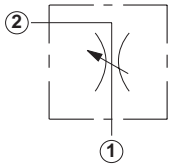
\*Add modifier /S to order SG Iron for pressure rating over 210 bar.

NOTES: Page 110 for cartridge models NF\*C-\*\*\* and NC\*B-\*\*\* shows performance curves, technical tips, and options. See page vii for technical information about line mount bodies including SAE flange pattern specifications. Consult the Sun Factory for other port sizes available in the bodies shown above. Model Codes printed in red are Preferred Products and are readily available.

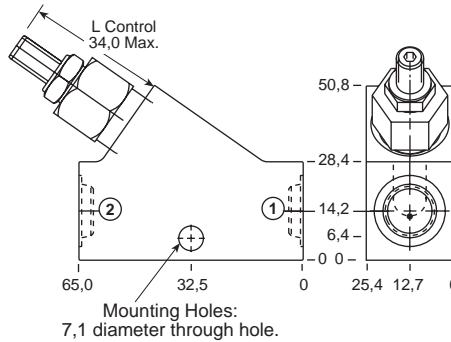
## Line Mounted Assemblies

TWO PORT FLOW CONTROL APPLICATIONS  
(INLINE BODIES)

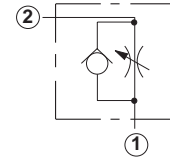
## FULLY ADJUSTABLE NEEDLE

Go to [www.sunhydraulics.com](http://www.sunhydraulics.com)  
for more product information.FULLY ADJUSTABLE NEEDLE WITH  
REVERSE FREE FLOW CHECK

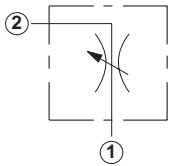
## 0-4,0 mm Cavity T-162A



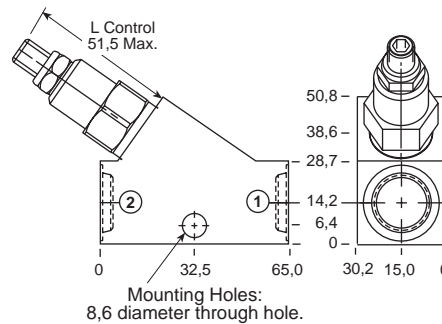
Ports 1 and 2	Assembly Model Code*
1/4" BSPP	<b>NFBC-L*N-ACT</b>
3/8" BSPP	<b>NFBC-L*N-ACU</b>

\*Add modifier /S to order SG Iron for pressure rating  
over 210 bar.

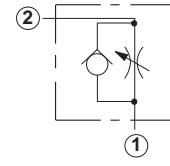
Ports 1 and 2	Assembly Model Code*
1/4" BSPP	<b>NCBB-L*N-ACT</b>
3/8" BSPP	<b>NCBB-L*N-ACU</b>

\*Add modifier /S to order SG Iron for pressure rating  
over 210 bar.

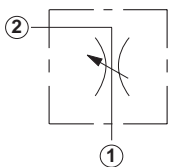
## 0-4,8 mm Cavity T-13A



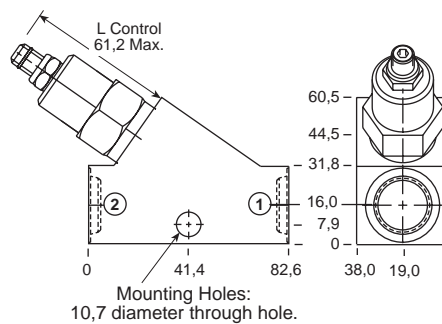
Ports 1 and 2	Assembly Model Code*
1/4" BSPP	<b>NFCC-L*N-GCT</b>
3/8" BSPP	<b>NFCC-L*N-GCU</b>

\*Add modifier /S to order SG Iron for pressure rating  
over 210 bar.

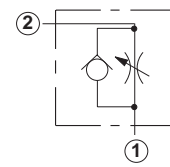
Ports 1 and 2	Assembly Model Code*
1/4" BSPP	<b>NCCB-L*N-GCT</b>
3/8" BSPP	<b>NCCB-L*N-GCU</b>

\*Add modifier /S to order SG Iron for pressure rating  
over 210 bar.

## 0-6,3 mm Cavity T-5A



Ports 1 and 2	Assembly Model Code*
3/8" BSPP	<b>NFDC-L*N-DCU</b>
1/2" BSPP	<b>NFDC-L*N-DCV</b>

\*Add modifier /S to order SG Iron for pressure rating  
over 210 bar.

Ports 1 and 2	Assembly Model Code*
3/8" BSPP	<b>NCEB-L*N-DCU</b>
1/2" BSPP	<b>NCEB-L*N-DCV</b>

\*Add modifier /S to order SG Iron for pressure rating  
over 210 bar.

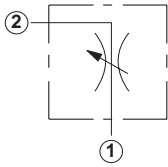
NOTES: Page 110 for cartridge models NF\*C-\*\*\* and NC\*B-\*\*\* shows performance curves, technical tips, and options.  
See page vii for technical information about line mount bodies including SAE flange pattern specifications.  
Consult the Sun Factory for other port sizes available in the bodies shown above.  
Model Codes printed in red are Preferred Products and are readily available.

**TWO PORT FLOW CONTROL APPLICATIONS  
(INLINE/INLINE 1.50"/2.00" SAE C61 FLANGE PORT BODIES)**

**FULLY ADJUSTABLE NEEDLE**

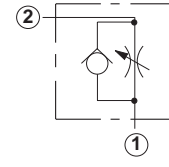
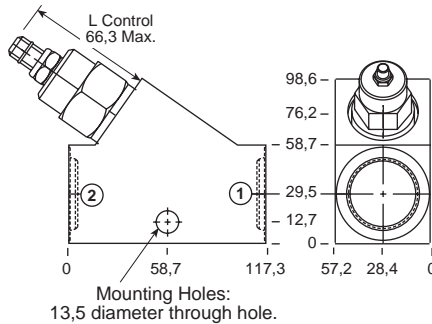
Go to [www.sunhydraulics.com](http://www.sunhydraulics.com) for more product information.

**FULLY ADJUSTABLE NEEDLE WITH REVERSE FREE FLOW CHECK**



Ports 1 and 2	Assembly Model Code*
3/4" BSPP	<b>NFEC-L*N-ICW</b>
<b>1" BSPP</b>	<b>NFEC-L*N-ICX</b>
1 1/4" BSPP	<b>NFEC-L*N-ICY</b>

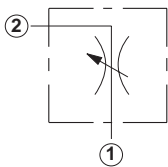
**0-9,6 mm Cavity T-16A**



Ports 1 and 2	Assembly Model Code*
3/4" BSPP	<b>NCFB-L*N-ICW</b>
<b>1" BSPP</b>	<b>NCFB-L*N-ICX</b>
1 1/4" BSPP	<b>NCFB-L*N-ICY</b>

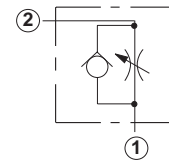
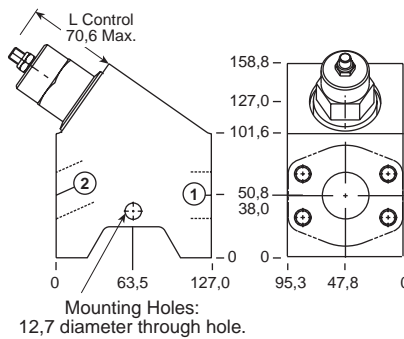
\*Add modifier /S to order SG Iron for pressure rating over 210 bar.

\*Add modifier /S to order SG Iron for pressure rating over 210 bar.



Ports 1 and 2	Assembly Model Code*
1 1/2" SAE C61	<b>NFFC-L*N-ZLS/M</b>

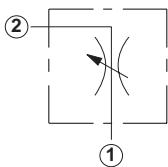
**0-14,2 mm Cavity T-18A**



Ports 1 and 2	Assembly Model Code*
1 1/2" SAE C61	<b>NCGB-L*N-ZLS/M</b>

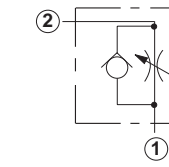
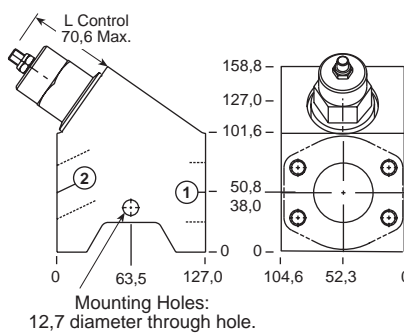
\*Add modifier /T to order SG Iron for pressure rating over 210 bar.

\*Add modifier /T to order SG Iron for pressure rating over 210 bar.



Ports 1 and 2	Assembly Model Code*
2" SAE C61	<b>NFFC-L*N-ZLR/M</b>

**0-14,2 mm Cavity T-18A**



Ports 1 and 2	Assembly Model Code*
2" SAE C61	<b>NCGB-L*N-ZLR/M</b>

\*Add modifier /T to order SG Iron for pressure rating over 210 bar.

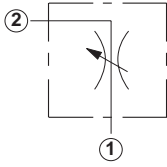
\*Add modifier /T to order SG Iron for pressure rating over 210 bar.

NOTES: Page 110 for cartridge models NF\*C-\*\*\* and NC\*B-\*\*\* shows performance curves, technical tips, and options. See page vii for technical information about line mount bodies including SAE flange pattern specifications. Consult the Sun Factory for other port sizes available in the bodies shown above. **Model Codes printed in red are Preferred Products and are readily available.**

## Line Mounted Assemblies

## TWO PORT FLOW CONTROL APPLICATIONS (2.00" SAE C61/C62 FLANGE PORT BODIES, 2 PORT CAVITY IN PARALLEL)

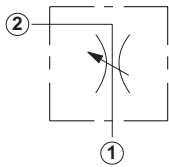
## FULLY ADJUSTABLE NEEDLE



Ports  
1 and 2  
2" SAE C61

Assembly  
Model Code\*  
NFFC-L\*N-XZY/M

\*Add modifier /T to order SG Iron for pressure rating over 210 bar.



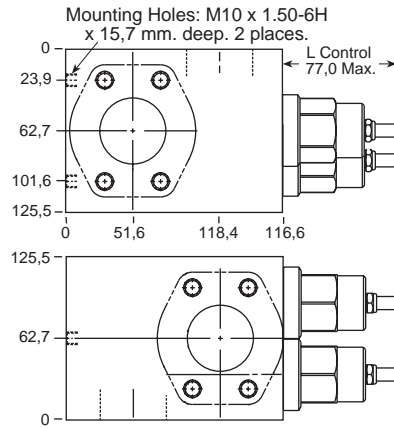
Ports  
1 and 2  
2" SAE C62

Assembly  
Model Code\*  
NFFC-L\*N-VTN/M

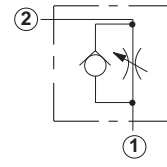
\*Add modifier /T to order SG Iron for pressure rating over 210 bar.

Go to [www.sunhydraulics.com](http://www.sunhydraulics.com)  
for more product information.

## 0-28 mm Cavity T-18A



## FULLY ADJUSTABLE NEEDLE WITH REVERSE FREE FLOW CHECK

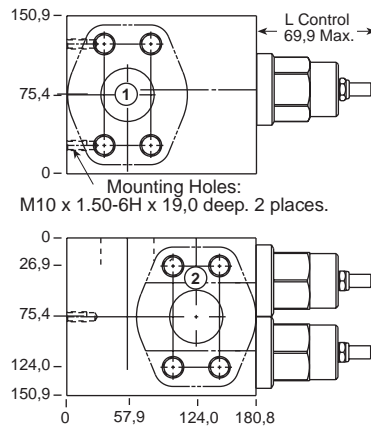


Ports  
1 and 2  
2" SAE C61

Assembly  
Model Code\*  
NCGB-L\*N-XZY/M

\*Add modifier /T to order SG Iron for pressure rating over 210 bar.

## 0-28 mm Cavity T-18A



Ports  
1 and 2  
2" SAE C62

Assembly  
Model Code\*  
NCGB-L\*N-VTN/M

\*Add modifier /T to order SG Iron for pressure rating over 210 bar.

NOTES: Page 110 for cartridge model NF\*C-\*\*\* shows performance curves, technical tips, and options.  
See page vii for technical information about line mount bodies including SAE flange pattern specifications.  
Consult the Sun Factory for other port sizes available in the bodies shown above.