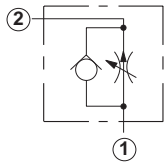


Line Mounted Assemblies

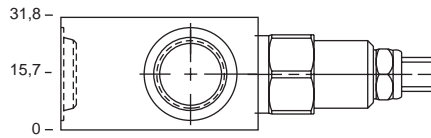
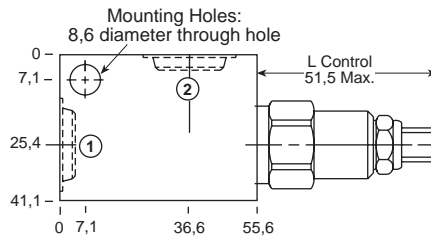
TWO PORT FLOW CONTROL APPLICATIONS (90 DEGREE BODIES)

FULLY ADJUSTABLE WITH
REVERSE FREE FLOW CHECK

Go to www.sunhydraulics.com
for more product information.

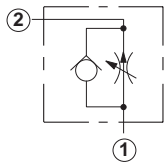


0,4-23 L/min. Cavity T-13A

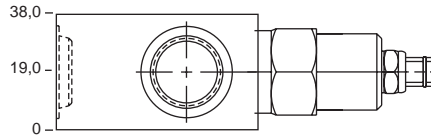
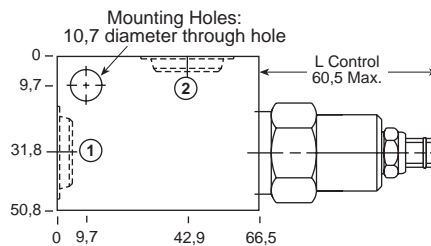


Ports 1 and 2	Assembly Model Code*
1/4" BSPP	FDBA-LAN-GAT
3/8" BSPP	FDBA-LAN-GAU

*Add modifier /S to order SG Iron for pressure rating over 210 bar.

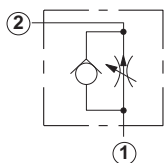


0,4-45 L/min. Cavity T-5A

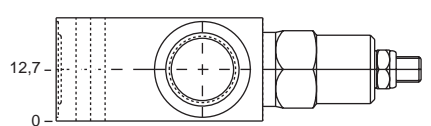
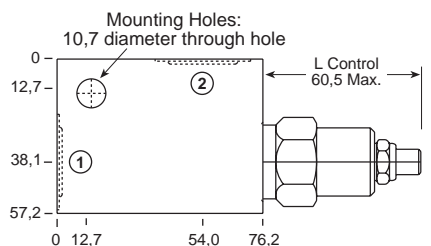


Ports 1 and 2	Assembly Model Code*
3/8" BSPP	FDCB-LAN-DAU
1/2" BSPP	FDCB-LAN-DAV

*Add modifier /S to order SG Iron for pressure rating over 210 bar.



0,4-45 L/min. Cavity T-5A



Ports 1 and 2	Assembly Model Code*
3/4" BSPP	FDCB-LAN-DAW

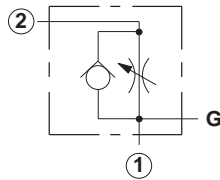
*Add modifier /S to order SG Iron for pressure rating over 210 bar.

NOTES: Page 126 for cartridge model FD**_*** shows performance curves, technical tips, and options.
See page vii for technical information about line mount bodies including SAE flange pattern specifications.
Consult the Sun Factory for other port sizes available in the bodies shown above.
Model Codes printed in red are Preferred Products and are readily available.

TWO PORT FLOW CONTROL APPLICATIONS (90 DEGREE BODIES)

FULLY ADJUSTABLE WITH REVERSE FREE FLOW CHECK

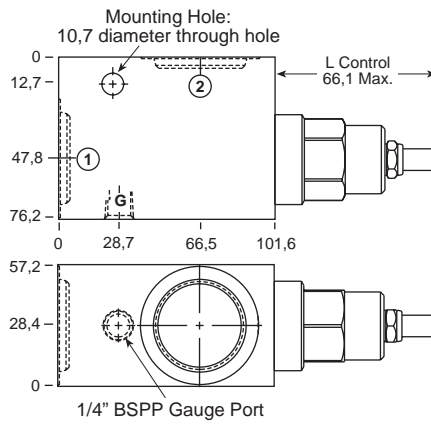
Go to www.sunhydraulics.com for more product information.



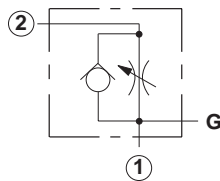
Ports 1 and 2	Assembly Model Code*
3/4" BSPP	FDEA-LAN-IAW
1" BSPP	FDEA-LAN-IAX
1 1/4" BSPP	FDEA-LAN-IAY

*Add modifier /S to order SG Iron for pressure rating over 210 bar.

1-95 L/min. Cavity T-16A



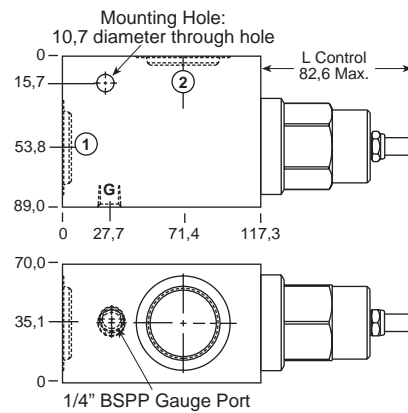
*Add modifier /S to order SG Iron for pressure rating over 210 bar.



Ports 1 and 2	Assembly Model Code*
1" BSPP	FDFA-LAN-LAX
1 1/4" BSPP	FDFA-LAN-LAY

*Add modifier /S to order SG Iron for pressure rating over 210 bar.

1-200 L/min. Cavity T-18A



*Add modifier /S to order SG Iron for pressure rating over 210 bar.

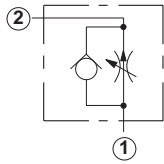
NOTES: Page 126 for cartridge model FD**_*** shows performance curves, technical tips, and options.
See page vii for technical information about line mount bodies including SAE flange pattern specifications.
Consult the Sun Factory for other port sizes available in the bodies shown above.
Model Codes printed in red are Preferred Products and are readily available.

Line Mounted Assemblies

TWO PORT FLOW CONTROL APPLICATIONS
(INLINE BODIES)

FULLY ADJUSTABLE WITH
REVERSE FREE FLOW CHECK

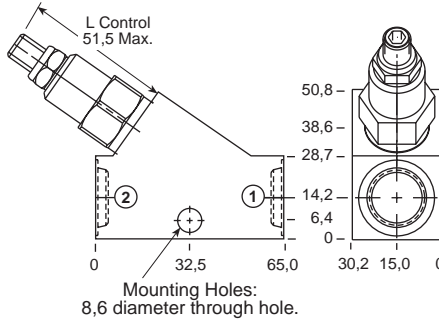
Go to www.sunhydraulics.com
for more product information.



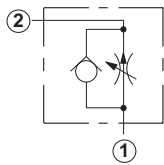
0,4-23 L/min.

Cavity T-13A

Ports 1 and 2	Assembly Model Code*
1/4" BSPP	FDDB-LAN-GCT
3/8" BSPP	FDDB-LAN-GCU



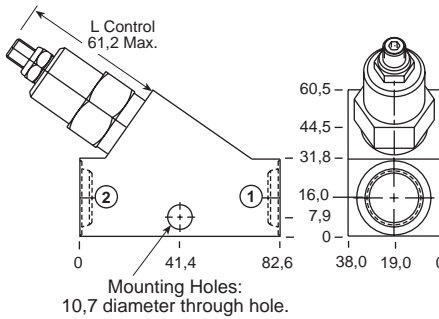
*Add modifier /S to order SG Iron for pressure rating
over 210 bar.



0,4-45 L/min.

Cavity T-5A

Ports 1 and 2	Assembly Model Code*
3/8" BSPP	FDCB-LAN-DCU
1/2" BSPP	FDCB-LAN-DCV



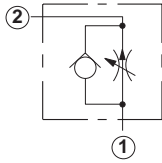
*Add modifier /S to order SG Iron for pressure rating
over 210 bar.

NOTES: Page 126 for cartridge model FD**-* shows performance curves, technical tips, and options.
See page vii for technical information about line mount bodies including SAE flange pattern specifications.
Consult the Sun Factory for other port sizes available in the bodies shown above.
Model Codes printed in red are Preferred Products and are readily available.

**TWO PORT FLOW CONTROL APPLICATIONS
(INLINE/INLINE 1.50"/2.00" SAE C61 FLANGE PORT BODIES)**

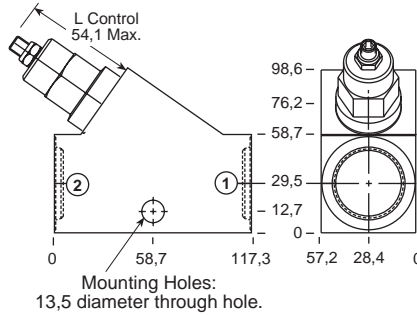
FULLY ADJUSTABLE WITH REVERSE FREE FLOW CHECK

Go to www.sunhydraulics.com for more product information.



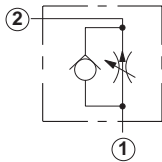
1-95 L/min. Cavity T-16A

Ports 1 and 2	Assembly Model Code*
3/4" BSPP	FDEA-LAN-ICW
1" BSPP	FDEA-LAN-ICX
1 1/4" BSPP	FDEA-LAN-ICY

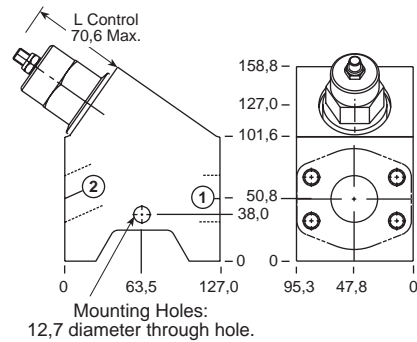


*Add modifier /S to order SG Iron for pressure rating over 210 bar.

1-200 L/min. Cavity T-18A

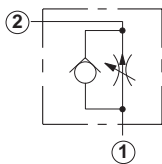


Ports 1 and 2	Assembly Model Code*
1 1/2" SAE C61	FDFA-LAN-ZLS/M

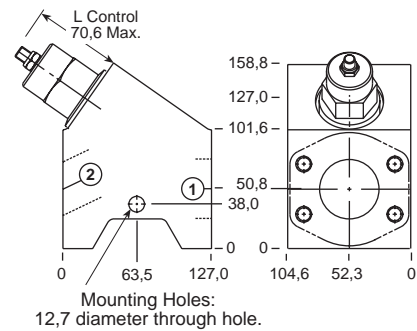


*Add modifier /T to order SG Iron for pressure rating over 210 bar.

1-200 L/min. Cavity T-18A



Ports 1 and 2	Assembly Model Code*
2" SAE C61	FDFA-LAN-ZLR/M



*Add modifier /T to order SG Iron for pressure rating over 210 bar.

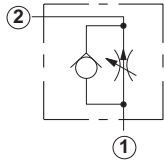
NOTES: Page 126 for cartridge model FD**-* shows performance curves, technical tips, and options. See page vii for technical information about line mount bodies including SAE flange pattern specifications. Consult the Sun Factory for other port sizes available in the bodies shown above. Model Codes printed in red are Preferred Products and are readily available.

Line Mounted Assemblies

TWO PORT FLOW CONTROL APPLICATIONS (2.00" SAE C61/C62 FLANGE PORT BODIES, 2 CAVITIES)

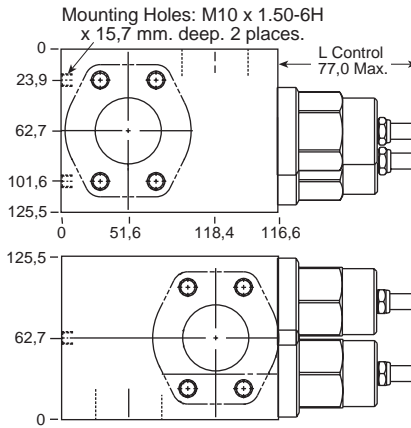
FULLY ADJUSTABLE WITH
REVERSE FREE FLOW CHECK

Go to www.sunhydraulics.com
for more product information.

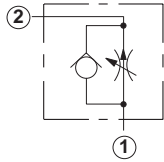


Ports 1 and 2	Assembly Model Code*
2" SAE C61	FDFA-LAN-XZY/M

1,6-400 L/min. Cavity T-18A

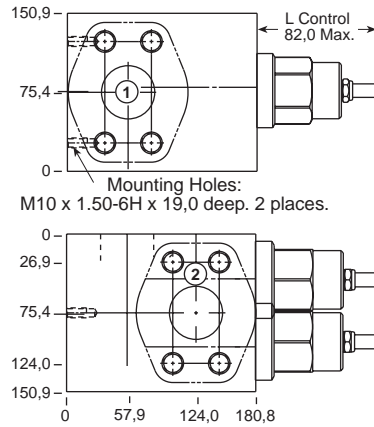


*Add modifier **/T** to order SG Iron for pressure rating
over 210 bar.



Ports 1 and 2	Assembly Model Code*
2" SAE C62	FDFA-LAN-VTN/M

1,6-400 L/min. Cavity T-18A



*Add modifier **/T** to order SG Iron for pressure rating
over 210 bar.

NOTES: Page 126 for cartridge model FD**_*** shows performance curves, technical tips, and options.
See page vii for technical information about line mount bodies including SAE flange pattern specifications.
Consult the Sun Factory for other port sizes available in the bodies shown above.