

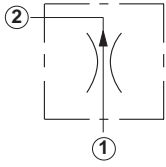
Line Mounted Assemblies

TWO PORT FLOW CONTROL APPLICATIONS (90 DEGREE BODIES)

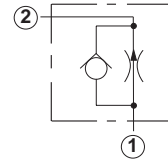
FIXED ORIFICE

Go to www.sunhydraulics.com
for more product information.

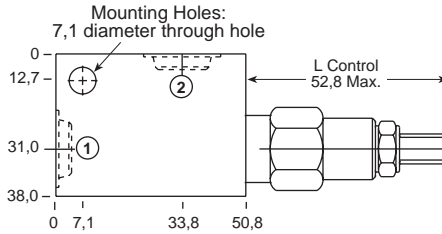
FIXED ORIFICE WITH REVERSE FREE FLOW CHECK



0,4-12 L/min. Cavity T-162A



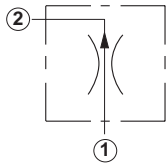
Ports 1 and 2	Assembly Model Code*
1/4" BSPP	FXBA-LAN-AAT
3/8" BSPP	FXBA-LAN-AAU



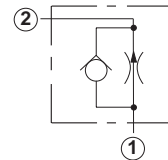
Ports 1 and 2	Assembly Model Code*
1/4" BSPP	FCBB-LAN-AAT
3/8" BSPP	FCBB-LAN-AAU

*Add modifier /S to order SG Iron for pressure rating over 210 bar.

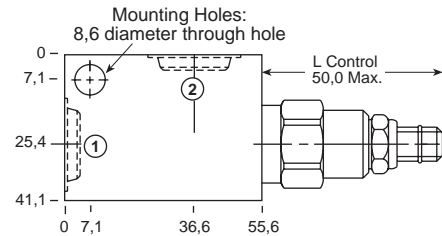
*Add modifier /S to order SG Iron for pressure rating over 210 bar.



0,4-23 L/min. Cavity T-13A



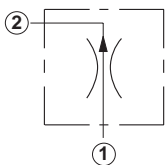
Ports 1 and 2	Assembly Model Code*
1/4" BSPP	FXCA-LAN-GAT
3/8" BSPP	FXCA-LAN-GAU



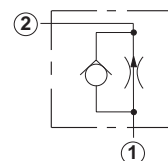
Ports 1 and 2	Assembly Model Code*
1/4" BSPP	FCCB-LAN-GAT
3/8" BSPP	FCCB-LAN-GAU

*Add modifier /S to order SG Iron for pressure rating over 210 bar.

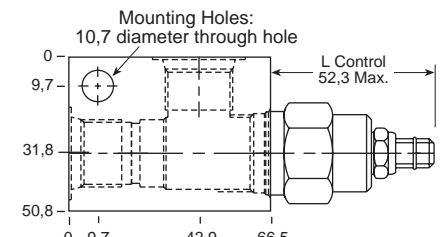
*Add modifier /S to order SG Iron for pressure rating over 210 bar.



0,4-45 L/min. Cavity T-5A



Ports 1 and 2	Assembly Model Code*
3/8" BSPP	FXDA-LAN-DAU
1/2" BSPP	FXDA-LAN-DAV



Ports 1 and 2	Assembly Model Code*
3/8" BSPP	FCDB-LAN-DAU
1/2" BSPP	FCDB-LAN-DAV

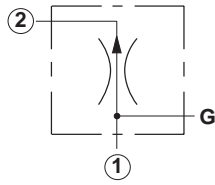
*Add modifier /S to order SG Iron for pressure rating over 210 bar.

*Add modifier /S to order SG Iron for pressure rating over 210 bar.

NOTES: Page 118 for cartridge models FX*A-*** and FC*B-*** shows performance curves, technical tips, and options.
See page vii for technical information about line mount bodies including SAE flange pattern specifications.
Consult the Sun Factory for other port sizes available in the bodies shown above.
Model Codes printed in red are Preferred Products and are readily available.

**TWO PORT FLOW CONTROL APPLICATIONS
(90 DEGREE BODIES)**

FIXED ORIFICE

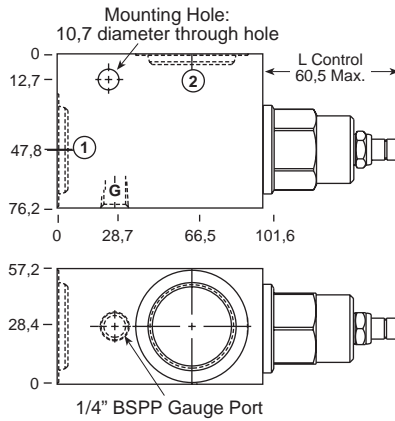


Ports 1 and 2	Assembly Model Code*
3/4" BSPP	FXEA-LAN-IAW
1" BSPP	FXEA-LAN-IAX
1 1/4" BSPP	FXEA-LAN-IAY

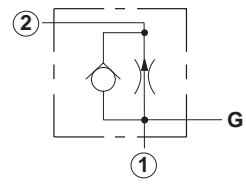
*Add modifier /S to order SG Iron for pressure rating over 210 bar.

Go to www.sunhydraulics.com for more product information.

0,8-95 L/min. Cavity T-16A



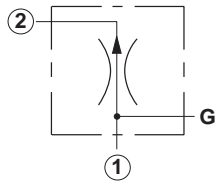
FIXED ORIFICE WITH REVERSE FREE FLOW CHECK



Ports 1 and 2	Assembly Model Code*
3/4" BSPP	FCFB-LAN-IAW
1" BSPP	FCFB-LAN-IAX
1 1/4" BSPP	FCFB-LAN-IAY

*Add modifier /S to order SG Iron for pressure rating over 210 bar.

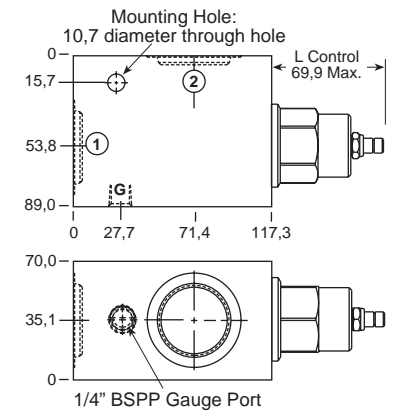
0,8-200 L/min. Cavity T-18A



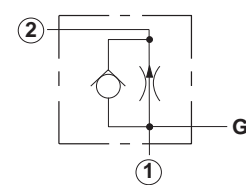
Ports 1 and 2	Assembly Model Code*
3/4" BSPP	FXFA-LAN-LAW
1" BSPP	FXFA-LAN-LAX
1 1/4" BSPP	FXFA-LAN-LAY

*Add modifier /S to order SG Iron for pressure rating over 210 bar.

0,8-200 L/min. Cavity T-18A



FIXED ORIFICE WITH REVERSE FREE FLOW CHECK



Ports 1 and 2	Assembly Model Code*
3/4" BSPP	FCFB-LAN-LAW
1" BSPP	FCFB-LAN-LAX
1 1/4" BSPP	FCFB-LAN-LAY

*Add modifier /S to order SG Iron for pressure rating over 210 bar.

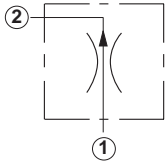
NOTES: Page 118 for cartridge models FX*A-*** and FC*B-*** shows performance curves, technical tips, and options. See page vii for technical information about line mount bodies including SAE flange pattern specifications. Consult the Sun Factory for other port sizes available in the bodies shown above. Model Codes printed in red are Preferred Products and are readily available.



Line Mounted Assemblies

TWO PORT FLOW CONTROL APPLICATIONS (INLINE BODIES)

FIXED ORIFICE

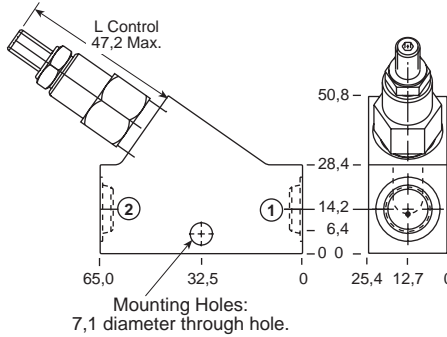


Ports 1 and 2	Assembly Model Code*
1/4" BSPP	FXBA-LAN-ACT
3/8" BSPP	FXBA-LAN-ACU

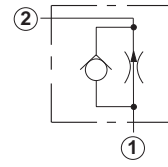
*Add modifier /S to order SG Iron for pressure rating over 210 bar.

Go to www.sunhydraulics.com for more product information.

0,4-12 L/min. Cavity T-162A

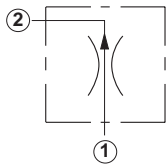


FIXED ORIFICE WITH REVERSE FREE FLOW CHECK



Ports 1 and 2	Assembly Model Code*
1/4" BSPP	FCBB-LAN-ACT
3/8" BSPP	FCBB-LAN-ACU

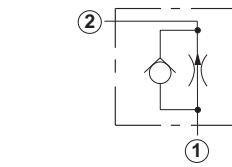
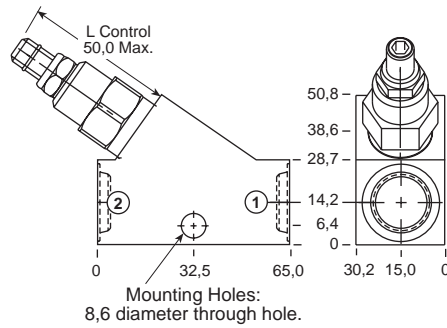
*Add modifier /S to order SG Iron for pressure rating over 210 bar.



Ports 1 and 2	Assembly Model Code*
1/4" BSPP	FXCA-LAN-GCT
3/8" BSPP	FXCA-LAN-GCU

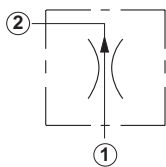
*Add modifier /S to order SG Iron for pressure rating over 210 bar.

0,4-23 L/min. Cavity T-13A



Ports 1 and 2	Assembly Model Code*
1/4" BSPP	FCCB-LAN-GCT
3/8" BSPP	FCCB-LAN-GCU

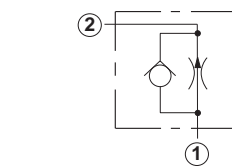
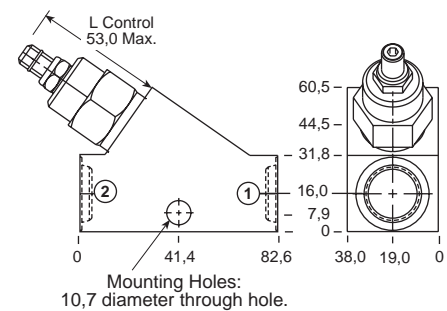
*Add modifier /S to order SG Iron for pressure rating over 210 bar.



Ports 1 and 2	Assembly Model Code*
3/8" BSPP	FXDA-LAN-DCU
1/2" BSPP	FXDA-LAN-DCV

*Add modifier /S to order SG Iron for pressure rating over 210 bar.

0,4-45 L/min. Cavity T-5A



Ports 1 and 2	Assembly Model Code*
3/8" BSPP	FCDB-LAN-DCU
1/2" BSPP	FCDB-LAN-DCV

*Add modifier /S to order SG Iron for pressure rating over 210 bar.

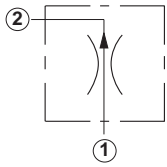
NOTES: Page 118 for cartridge models FX*A-*** and FC*B-*** shows performance curves, technical tips, and options. See page vii for technical information about line mount bodies including SAE flange pattern specifications. Consult the Sun Factory for other port sizes available in the bodies shown above. Model Codes printed in red are Preferred Products and are readily available.

**TWO PORT FLOW CONTROL APPLICATIONS
(INLINE/INLINE 1.50"/2.00" SAE C61 FLANGE PORT BODIES)**

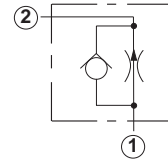
FIXED ORIFICE

Go to www.sunhydraulics.com for more product information.

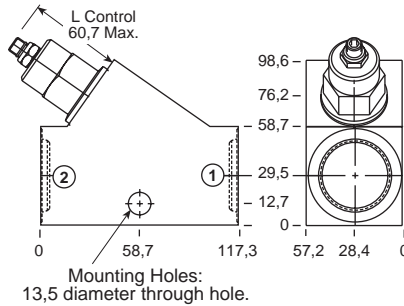
FIXED ORIFICE WITH REVERSE FREE FLOW CHECK



0,8-95 L/min. Cavity T-16A



Ports 1 and 2	Assembly Model Code*
3/4" BSPP	FXEA-LAN-ICW
1" BSPP	FXEA-LAN-ICX
1 1/4" BSPP	FXEA-LAN-ICY

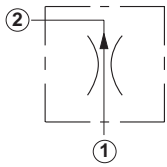


Ports 1 and 2	Assembly Model Code*
3/4" BSPP	FCEB-LAN-ICW
1" BSPP	FCEB-LAN-ICX
1 1/4" BSPP	FCEB-LAN-ICY

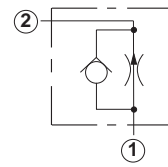
*Add modifier **/S** to order SG Iron for pressure rating over 210 bar.

*Add modifier **/S** to order SG Iron for pressure rating over 210 bar.

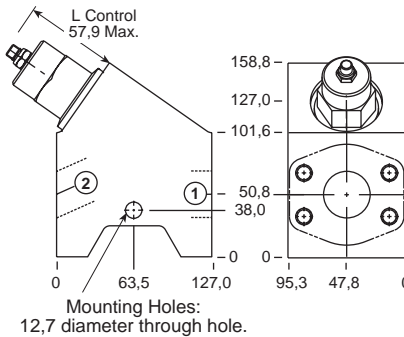
0,8-200 L/min. Cavity T-18A



0,8-200 L/min. Cavity T-18A



Ports 1 and 2	Assembly Model Code*
1 1/2" SAE C61	FXFA-LAN-ZLS/M

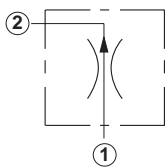


Ports 1 and 2	Assembly Model Code*
1 1/2" SAE C61	FCFB-LAN-ZLS/M

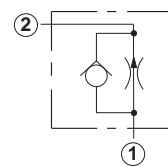
*Add modifier **/T** to order SG Iron for pressure rating over 210 bar.

*Add modifier **/T** to order SG Iron for pressure rating over 210 bar.

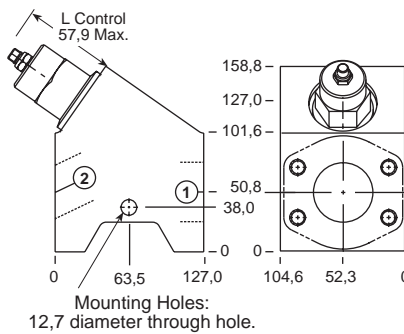
0,8-200 L/min. Cavity T-18A



0,8-200 L/min. Cavity T-18A



Ports 1 and 2	Assembly Model Code*
2" SAE C61	FXFA-LAN-ZLR/M



Ports 1 and 2	Assembly Model Code*
2" SAE C61	FCFB-LAN-ZLR/M

*Add modifier **/T** to order SG Iron for pressure rating over 210 bar.

*Add modifier **/T** to order SG Iron for pressure rating over 210 bar.

NOTES: Page 118 for cartridge models FX*A-*** and FC*B-*** shows performance curves, technical tips, and options. See page vii for technical information about line mount bodies including SAE flange pattern specifications. Consult the Sun Factory for other port sizes available in the bodies shown above. Model Codes printed in red are Preferred Products and are readily available.

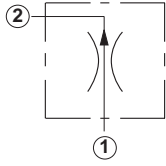
Line Mounted Assemblies

**TWO PORT FLOW CONTROL APPLICATIONS
(2.00" SAE C61/C62 FLANGE PORT BODIES, 2 PORT CAVITY IN PARALLEL)**

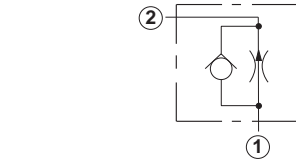
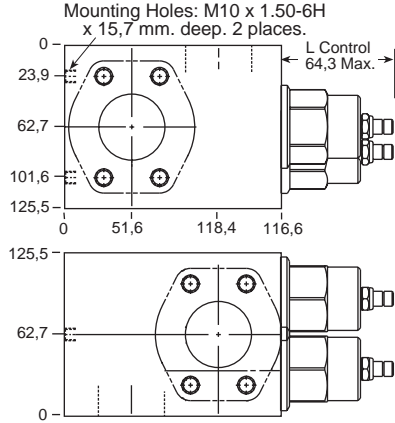
FIXED ORIFICE

Go to www.sunhydraulics.com for more product information.

1,6-400 L/min. Cavity T-18A



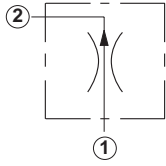
Ports 1 and 2	Assembly Model Code*
2" SAE C61	FXFA-LAN-XZY/M



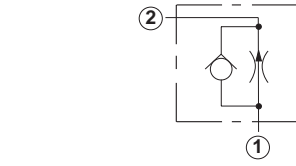
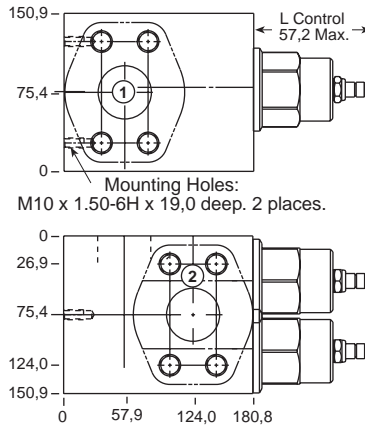
Ports 1 and 2	Assembly Model Code*
2" SAE C61	FCFB-LAN-XZY/M

*Add modifier **T** to order SG Iron for pressure rating over 210 bar.

1,6-400 L/min. Cavity T-18A



Ports 1 and 2	Assembly Model Code*
2" SAE C62	FXFA-LAN-VTN/M



Ports 1 and 2	Assembly Model Code*
2" SAE C62	FCFB-LAN-VTN/M

*Add modifier **T** to order SG Iron for pressure rating over 210 bar.

NOTES: Page 118 for cartridge model FX*A-*** shows performance curves, technical tips, and options. See page vii for technical information about line mount bodies including SAE flange pattern specifications. Consult the Sun Factory for other port sizes available in the bodies shown above.