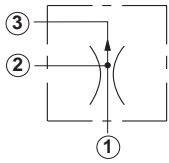


Line Mounted Assemblies

THREE PORT PRIORITY FLOW CONTROL APPLICATIONS
(90 DEGREE HIGH CAPACITY PORT 3 BODIES)

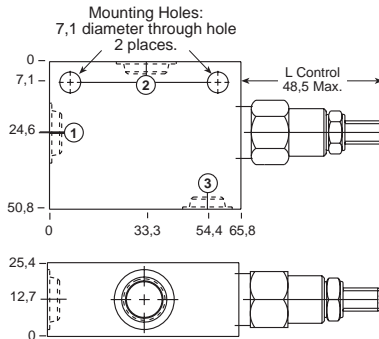
BYPASS / RESTRICTIVE
FIXED ORIFICE

Go to www.sunhydraulics.com
for more product information.

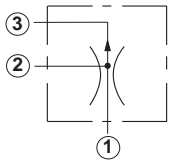


0,4-11 L/min. Cavity T-163A

Ports 1 and 2	Port 3	Assembly Model Code*
1/4" BSPP	1/4" BSPP	FRBA-LAN-JCT
3/8" BSPP	1/4" BSPP	FRBA-LAN-JCU

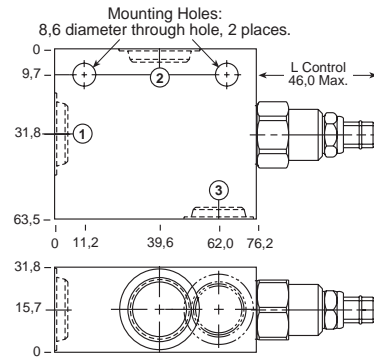


*Add modifier /S to order SG Iron for pressure rating over 210 bar.

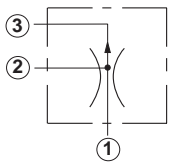


0,4-23 L/min. Cavity T-11A

Ports 1 and 2	Port 3	Assembly Model Code*
3/8" BSPP	3/8" BSPP	FRCA-LAN-EAU
1/2" BSPP	3/8" BSPP	FRCA-LAN-EAV

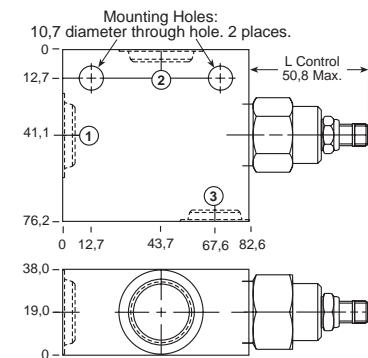


*Add modifier /S to order SG Iron for pressure rating over 210 bar.



0,4-45 L/min. Cavity T-2A

Ports 1 and 2	Port 3	Assembly Model Code*
3/8" BSPP	3/8" BSPP	FRDA-LAN-BAU
1/2" BSPP	1/2" BSPP	FRDA-LAN-BAV
3/4" BSPP	1/2" BSPP	FRDA-LAN-BAW



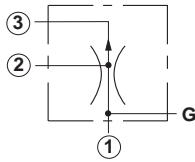
*Add modifier /S to order SG Iron for pressure rating over 210 bar.

NOTES: Page 134 for cartridge model FR*A-*** shows performance curves, technical tips, and options.
See page vii for technical information about line mount bodies including SAE flange pattern specifications.
Consult the Sun Factory for other port sizes available in the bodies shown above.
Model Codes printed in red are Preferred Products and are readily available.

**THREE PORT PRIORITY FLOW CONTROL APPLICATIONS
(90 DEGREE, HIGH CAPACITY PORT 3 BODIES)**

**BYPASS / RESTRICTIVE
FIXED ORIFICE**

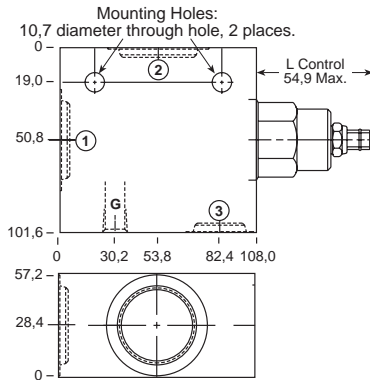
Go to www.sunhydraulics.com
for more product information.



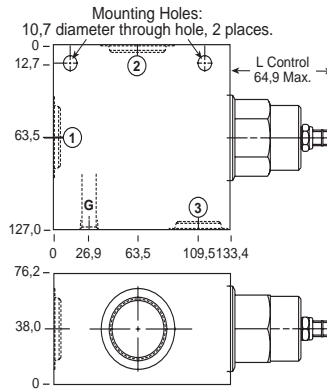
Ports 1 and 2	Port 3	Assembly Model Code*
3/4" BSPP	3/4" BSPP	FREA-LAN-HEW
1" BSPP	3/4" BSPP	FREA-LAN-HEX
1 1/4" BSPP	3/4" BSPP	FREA-LAN-HEY

*Add modifier /S to order SG Iron for pressure rating over 210 bar.

1-95 L/min. Cavity T-17A



1-200 L/min. Cavity T-19A



*Add modifier /S to order SG Iron for pressure rating over 210 bar.

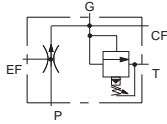
NOTES: Page 134 for cartridge model FR*A-*** show performance curves, technical tips, and options.
See page vii for technical information about line mount bodies including SAE flange pattern specifications.
Consult the Sun Factory for other port sizes available in the bodies shown above.
Model Codes printed in red are Preferred Products and are readily available.

Line Mounted Assemblies

THREE PORT PRESSURE-COMPENSATED PRIORITY FLOW CONTROL APPLICATIONS (RELIEF ON CONTROLLED PORT BODIES)

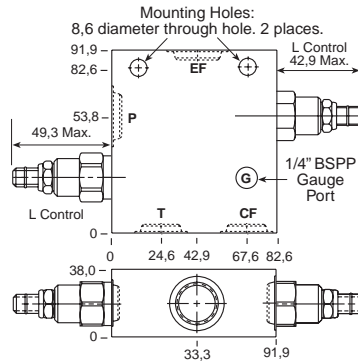
UP TO 25 L/min.
PRIORITY FLOW

Go to www.sunhydraulics.com
for more product information.



0,4-23 L/min. Cavity T-11A

Ports (EF) Excess Flow & (P) Pump	Ports (CF) Control Flow & (T) Tank	Assembly Model Code*
1/4" BSPP	1/4" BSPP	YRDR-LAN-LT
3/8" BSPP	3/8" BSPP	YRDR-LAN-LU
1/2" BSPP	3/8" BSPP	YRDR-LAN-LV

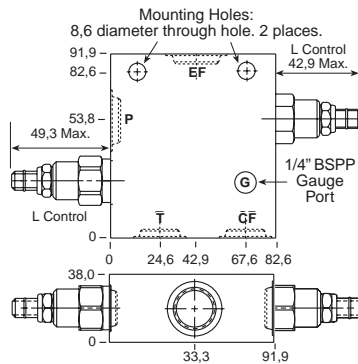
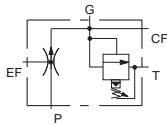


*Add modifier /S to order SG Iron for pressure rating over 210 bar.

UP TO 50 L/min.
PRIORITY FLOW

0,4-45 L/min. Cavity T-2A

Ports (EF) Excess Flow & (P) Pump	Ports (CF) Control Flow & (T) Tank	Assembly Model Code*
1/2" BSPP	1/2" BSPP	YREM-LAN-LV
3/4" BSPP	1/2" BSPP	YREM-LAN-LW

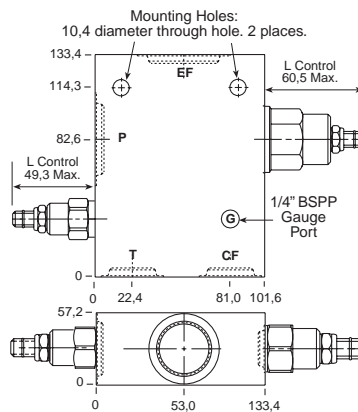
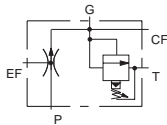


*Add modifier /S to order SG Iron for pressure rating over 210 bar.

UP TO 100 L/min.
PRIORITY FLOW

1-95 L/min. Cavity T-17A

Ports (EF) Excess Flow & (P) Pump	Ports (CF) Control Flow & (T) Tank	Assembly Model Code*
3/4" BSPP	3/4" BSPP	YRFF-LAN-LW
1" BSPP	3/4" BSPP	YRFF-LAN-LX
1 1/4" BSPP	3/4" BSPP	YRFF-LAN-LY



*Add modifier /S to order SG Iron for pressure rating over 210 bar.

NOTES: Page 134 for cartridge model FR*A-*** shows performance curves, technical tips, and options.
See page vii for technical information about line mount bodies including SAE flange pattern specifications.
Consult the Sun Factory for other port sizes available in the bodies shown above.