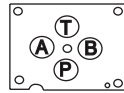


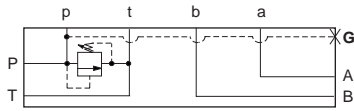
ISO 03 / CETOP 3 RELIEF VALVES
(SIDE PORTED SUBPLATE / REAR PORTED SUBPLATE / SIDE PORTED SUBPLATE WITH P AND T IN BASE)

T-10A Cavity



First two subplates shown below are 89,0 mm wide.
 Third subplate shown below is 76,2 mm wide

PILOT OPERATED



Ports	Assembly Model Code*
A, B, P, T	RPEC-LAN-FSU

*Add modifier /S to order SG Iron for pressure rating over 210 bar.

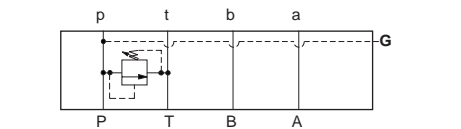
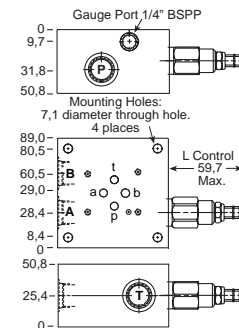
DIRECT ACTING

Function

P to T

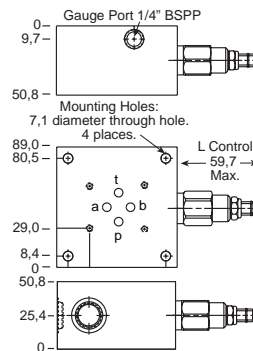
Ports	Assembly Model Code*
A, B, P, T	RDDA-LAN-FSU

*Add modifier /S to order SG Iron for pressure rating over 210 bar.



Ports	Assembly Model Code*
A, B, P, T	RPEC-LAN-FRU

*Add modifier /S to order SG Iron for pressure rating over 210 bar.

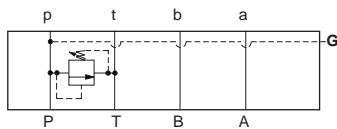


Function

P to T

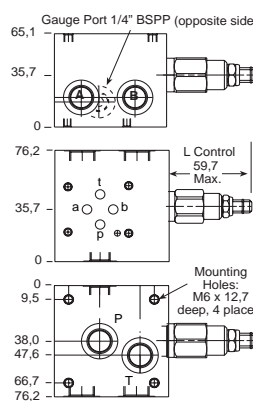
Ports	Assembly Model Code*
A, B, P, T	RDDA-LAN-FRU

*Add modifier /S to order SG Iron for pressure rating over 210 bar.



Ports	Assembly Model Code*
A, B, P, T	RPEC-LAN-FVU

*Add modifier /S to order SG Iron for pressure rating over 210 bar.



Function

P to T

Ports	Assembly Model Code*
A, B, P, T	RDDA-LAN-FVU

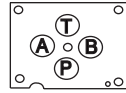
*Add modifier /S to order SG Iron for pressure rating over 210 bar.

NOTES: Page 2 for cartridge models RP*C-*** and RD*A-*** show performance curves, technical tips, and options.
 See Page 140 for technical information about sandwich bodies including ISO interface patterns, mounting instructions, studrods, and studkits.
 Go to www.sunhydraulics.com for more product information.
 Model Codes printed in red are Preferred Products and are readily available.

Sandwich Assemblies

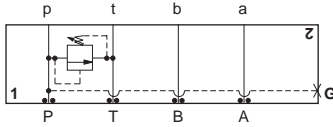
ISO 03 / CETOP 3 RELIEF VALVES

T-10A Cavity



All sandwich bodies shown below are 44,5 mm wide

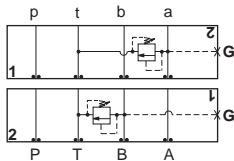
PILOT OPERATED



Assembly Model Code*

RPEC-LAN-FBP/M

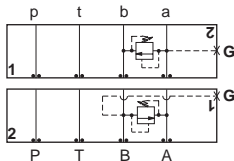
*Add modifier **/T** to order SG Iron for pressure rating over 210 bar.



Assembly Model Code*

RPEC-LAN-FBA/M

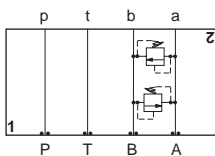
*Add modifier **/T** to order SG Iron for pressure rating over 210 bar.



Assembly Model Code*

RPEC-LAN-FBC/M

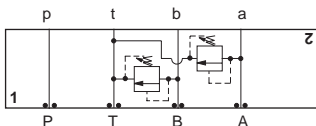
*Add modifier **/T** to order SG Iron for pressure rating over 210 bar.



Assembly Model Code*

RPEC-LAN-FBY

*Add modifier **/S** to order SG Iron for pressure rating over 210 bar.



Assembly Model Code*

RPEC-LAN-FBX

*Add modifier **/S** to order SG Iron for pressure rating over 210 bar.

DIRECT ACTING

Function

P to T

Assembly Model Code*

RDDA-LAN-FBP/M

*Add modifier **/T** to order SG Iron for pressure rating over 210 bar.

Function

A to T (High Capacity)

B to T (High Capacity)

Assembly Model Code*

RDDA-LAN-FBA/M

*Add modifier **/T** to order SG Iron for pressure rating over 210 bar.

Function

A to B (High Capacity)

B to A (High Capacity)

Assembly Model Code*

RDDA-LAN-FBC/M

*Add modifier **/T** to order SG Iron for pressure rating over 210 bar.

Function

A to B and B to A (High Capacity) (Cross-Port)

Assembly Model Code*

RDDA-LAN-FBY

*Add modifier **/S** to order SG Iron for pressure rating over 210 bar.

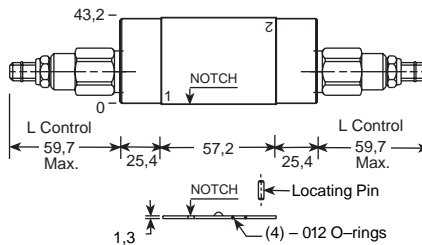
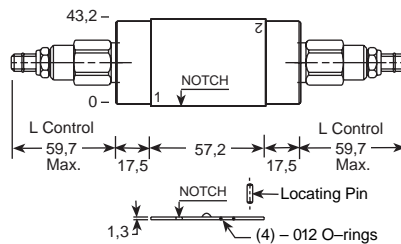
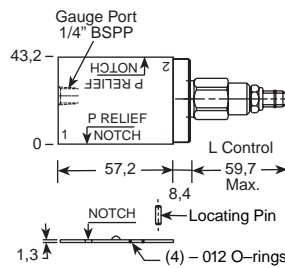
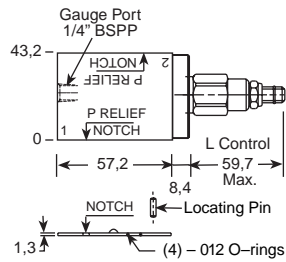
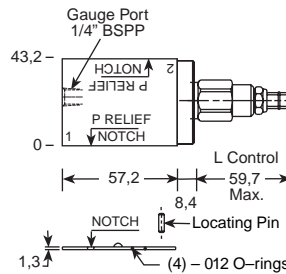
Function

A and B to T (High Capacity)

Assembly Model Code*

RDDA-LAN-FBX

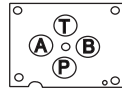
*Add modifier **/S** to order SG Iron for pressure rating over 210 bar.



NOTES: Page 2 for cartridge models RP*C-*** and RD*A-*** show performance curves, technical tips, and options. See page 140 for technical information about sandwich bodies including ISO interface patterns, mounting instructions, studrods, and studkits. Go to www.sunhydraulics.com for more product information. Model Codes printed in red are Preferred Products and are readily available.

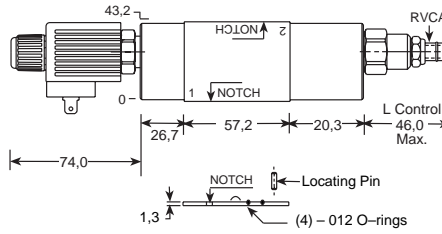
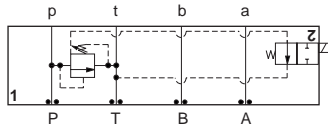
ISO 03 / CETOP 3 RELIEF VALVES, VENTED

T-11A Cavity



All sandwich bodies shown below are 44,5 mm wide

PILOT OPERATED



Function

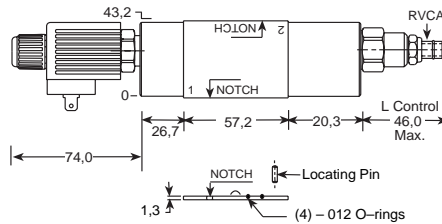
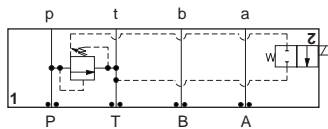
P to T
(Normally Open, Solenoid Vented)

Assembly Model Code*

XRCO-LAN-HA

*Add modifier /S to order SG Iron for pressure rating over 210 bar.

Operating pressure is limited to 350 bar.
Coil must be selected separately. See page 248.



Function

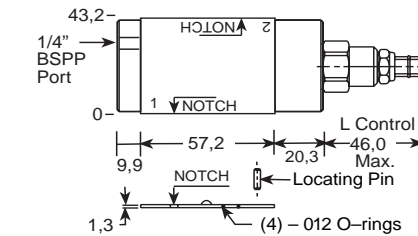
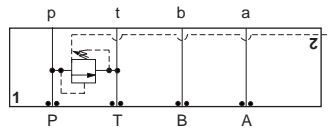
P to T
(Normally Closed, Solenoid Vented)

Assembly Model Code*

XRCO-LAN-CA

*Add modifier /S to order SG Iron for pressure rating over 210 bar.

Operating pressure is limited to 350 bar.
Coil must be selected separately. See page 248.



Function

P to T (Externally Vented)

Vent Port

Assembly Model Code*

1/4" BSPP

RVCA-LAN-EBC/M

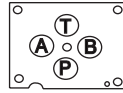
*Add modifier /T to order SG Iron for pressure rating over 210 bar.

NOTES: Page 12 for cartridge model RV*A-*** show performance curves, technical tips, and options.
Select Solenoid Connector Option from Page 248.

See Page 140 for technical information about sandwich bodies including ISO interface patterns, mounting instructions, studrods, and studkits.
Go to www.sunhydraulics.com for more product information.

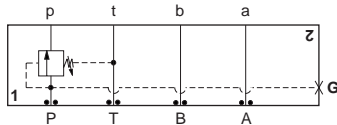
ISO 03 / CETOP 3 SEQUENCE VALVES

T-11A Cavity



All sandwich bodies shown below are 44,5 mm wide

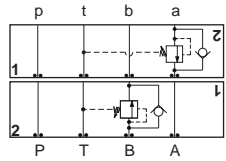
PILOT OPERATED



Assembly Model Code*

RSDC-LAN-EBW/M

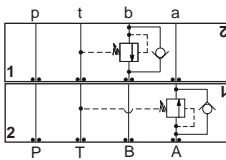
*Add modifier /S to order SG Iron for pressure rating over 210 bar.



Assembly Model Code*

RSDC-LAN-EB4

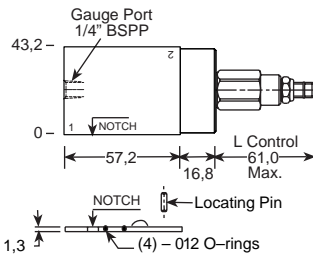
*Add modifier /S to order SG Iron for pressure rating over 210 bar.



Assembly Model Code*

RSDC-LAN-EB5

*Add modifier /S to order SG Iron for pressure rating over 210 bar.



DIRECT ACTING

Function

In to **P**

Assembly Model Code*

SXCA-LAN-EBW/M

*Add modifier /T to order SG Iron for pressure rating over 210 bar.

Function

In to **A** (Reverse Free Flow Check)

Out of **B** (Reverse Free Flow Check)

Assembly Model Code*

SXCA-LAN-EB4

*Add modifier /S to order SG Iron for pressure rating over 210 bar.

Function

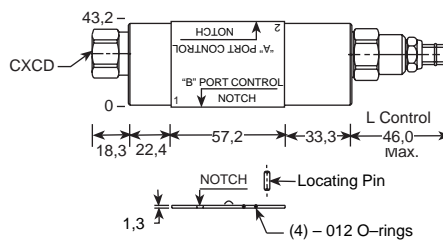
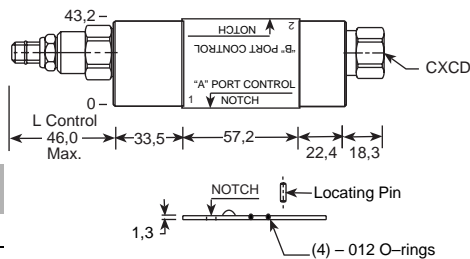
In to **B** (Reverse Free Flow Check)

Out of **A** (Reverse Free Flow Check)

Assembly Model Code*

SXCA-LAN-EB5

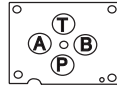
*Add modifier /S to order SG Iron for pressure rating over 210 bar.



NOTES: Pages 20 and 29 for cartridge models RS*C-***, SX*A-*** and SC*A-*** show performance curves, technical tips, and options. See Page 140 for technical information about sandwich bodies including ISO interface patterns, mounting instructions, studrods, and studkits. Go to www.sunhydraulics.com for more product information. Model Codes printed in red are Preferred Products and are readily available.

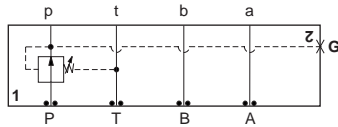
ISO 03 / CETOP 3 REDUCING VALVES

T-11A Cavity



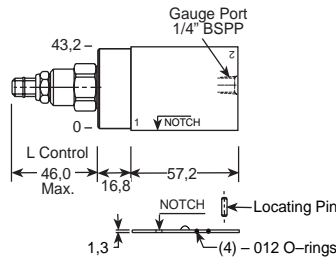
All sandwich bodies shown below are 44,5 mm wide

PILOT OPERATED

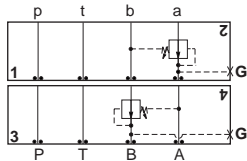


Assembly Model Code*
PBDB-LAN-EBP/M

*Add modifier /T to order SG Iron for pressure rating over 210 bar.

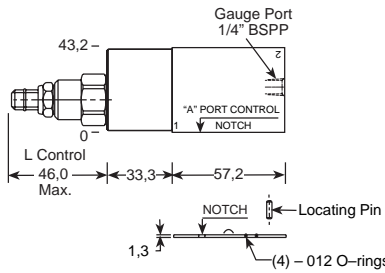


Function
On P Drained to T

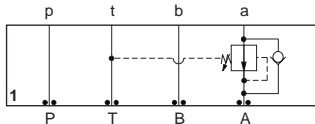


Assembly Model Code*
PBDB-LAN-EBA/M

*Add modifier /T to order SG Iron for pressure rating over 210 bar.

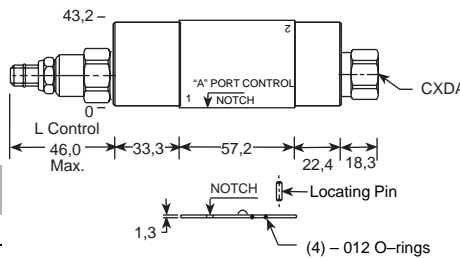


Function
On A Drained to B
On B Drained to A

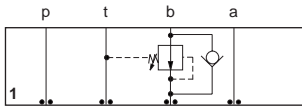


Assembly Model Code*
PBDB-LAN-EB2

*Add modifier /S to order SG Iron for pressure rating over 210 bar.

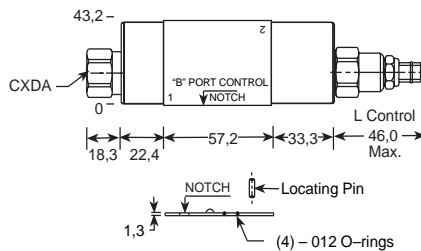


Function
On A Drain to T
(Reverse Free Flow Check)

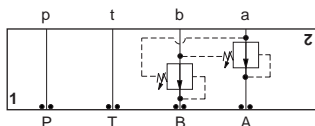


Assembly Model Code*
PBDB-LAN-EB3

*Add modifier /S to order SG Iron for pressure rating over 210 bar.

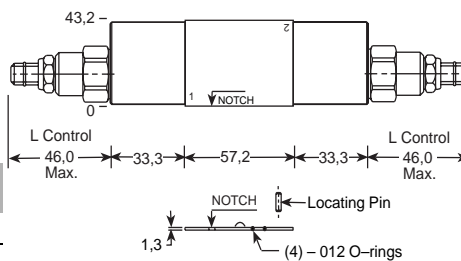


Function
On B Drain to T
(Reverse Free Flow Check)



Assembly Model Code*
PBDB-LAN-EBY

*Add modifier /S to order SG Iron for pressure rating over 210 bar.



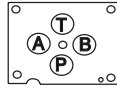
Function
On A and B
(Drains to Opposite Port)

NOTES: Page 34 for cartridge model PB*B-*** show performance curves, technical tips, and options.
See Page 140 for technical information about sandwich bodies including ISO interface patterns, mounting instructions, studrods, and studkits.
Go to www.sunhydraulics.com for more product information.
Model Codes printed in red are Preferred Products and are readily available.

Sandwich Assemblies

ISO 03 / CETOP 3 REDUCING / RELIEVING VALVES

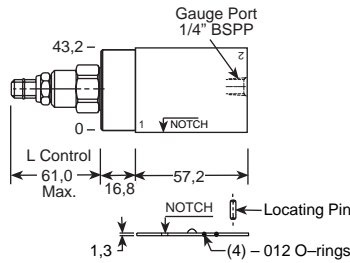
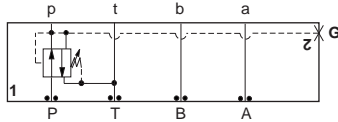
T-11A Cavity



All sandwich bodies shown below are 44,5 mm wide

PILOT OPERATED

DIRECT ACTING



Function

On **P** Tank to **T**, Drained at **T**

Assembly Model Code*

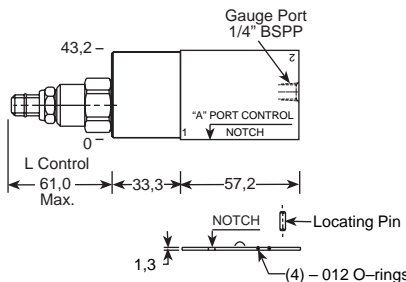
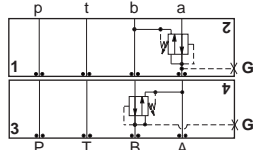
PPDB-LAN-EBP/M

*Add modifier **/T** to order SG Iron for pressure rating over 210 bar.

Assembly Model Code*

PRDB-LAN-EBP/M

*Add modifier **/T** to order SG Iron for pressure rating over 210 bar.



Function

On **A** Tank to **B**

On **B** Tank to **A**

Assembly Model Code*

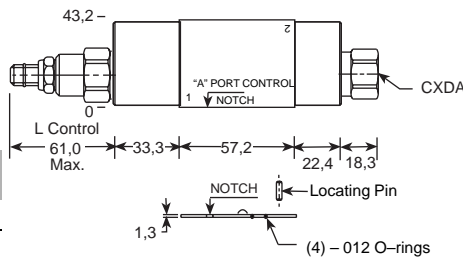
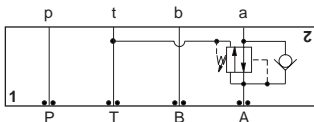
PPDB-LAN-EBA/M

*Add modifier **/T** to order SG Iron for pressure rating over 210 bar.

Assembly Model Code*

PRDB-LAN-EBA/M

*Add modifier **/T** to order SG Iron for pressure rating over 210 bar.



Function

On **A** Tank to **T**
(Reverse Free Flow Check)

Assembly Model Code*

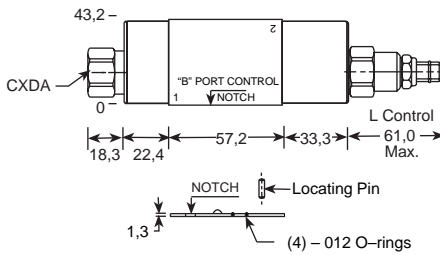
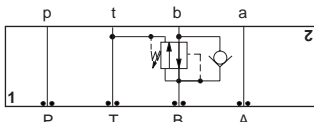
PPDB-LAN-EB2

*Add modifier **/S** to order SG Iron for pressure rating over 210 bar.

Assembly Model Code*

PRDB-LAN-EB2

*Add modifier **/S** to order SG Iron for pressure rating over 210 bar.



Function

On **B** Tank to **T**, Drained to **T**
(Reverse Free Flow Check)

Assembly Model Code*

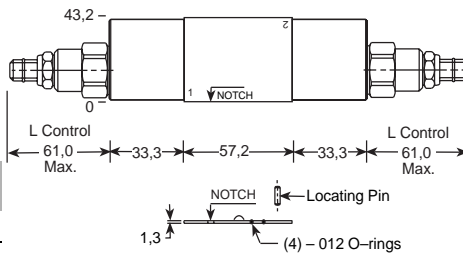
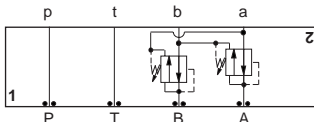
PPDB-LAN-EB3

*Add modifier **/S** to order SG Iron for pressure rating over 210 bar.

Assembly Model Code*

PRDB-LAN-EB3

*Add modifier **/S** to order SG Iron for pressure rating over 210 bar.



Function

On **A** and **B**
Tanks and Drains to Opposite Port

Assembly Model Code*

PPDB-LAN-EBY

*Add modifier **/S** to order SG Iron for pressure rating over 210 bar.

Assembly Model Code*

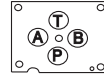
PRDB-LAN-EBY

*Add modifier **/S** to order SG Iron for pressure rating over 210 bar.

NOTES: Page 42 for cartridge models PP*B-*** and PR*B-*** show performance curves, technical tips, and options.
See Page 140 for technical information about sandwich bodies including ISO interface patterns, mounting instructions, studrods, and studkits.
Go to www.sunhydraulics.com for more product information.
Model Codes printed in red are Preferred Products and are readily available.

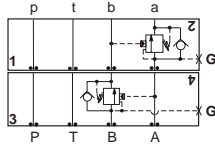
ISO 03 / CETOP 3 COUNTERBALANCE / VENTED COUNTERBALANCE VALVES

T-11A / T21A Cavity



All sandwich bodies shown below are 44,5 mm wide

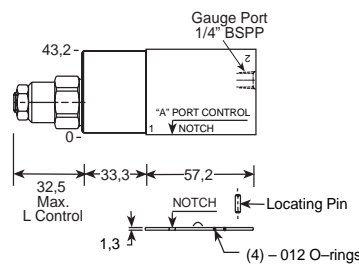
PILOT RATIOS
3:1 and 1.5:1 (CB**) and 3:1 and 1:1 (CW**)



Assembly Model Code*
CBC*-LHN-EBA/M

*The 4th digit of the Model Code must be entered to specify counterbalance pilot ratio. Add modifier /T to order SG Iron for pressure rating over 210 bar.

STANDARD

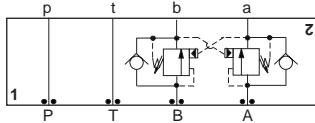


Function

On A Pilot from B
On B Pilot from A

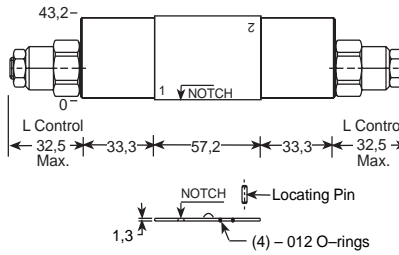
Assembly Model Code*
CBC*-LJN-EBA/M

*The 4th digit of the Model Code must be entered to specify counterbalance pilot ratio. Add modifier /T to order SG Iron for pressure rating over 210 bar.



Assembly Model Code*
CBC*-LHN-EBY

*The 4th digit of the Model Code must be entered to specify counterbalance pilot ratio. Add modifier /S to order SG Iron for pressure rating over 210 bar.

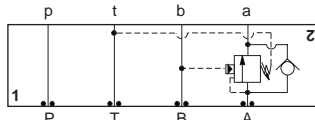


Function

On A and B (Cross-Piloted)

Assembly Model Code*
CBC*-LJN-EBY

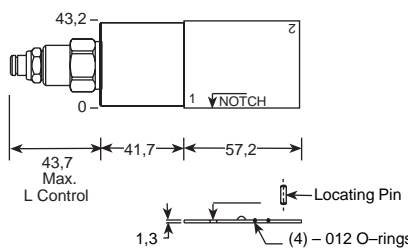
*The 4th digit of the Model Code must be entered to specify counterbalance pilot ratio. Add modifier /S to order SG Iron for pressure rating over 210 bar.



Assembly Model Code*
CWC*-LHN-MBA

*The 4th digit of the Model Code must be entered to specify counterbalance pilot ratio. Add modifier /S to order SG Iron for pressure rating over 210 bar.

VENTED

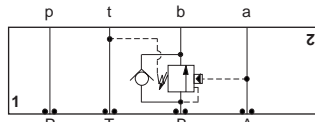


Function

On A Pilot from B, Vent to T

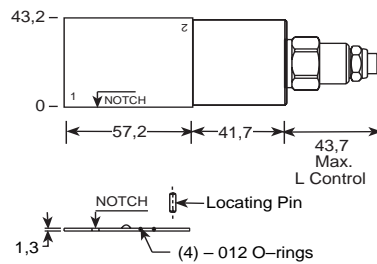
Assembly Model Code*
CWC*-LGN-MBA

*The 4th digit of the Model Code must be entered to specify counterbalance pilot ratio. Add modifier /S to order SG Iron for pressure rating over 210 bar.



Assembly Model Code*
CWC*-LHN-MBB

*The 4th digit of the Model Code must be entered to specify counterbalance pilot ratio. Add modifier /S to order SG Iron for pressure rating over 210 bar.

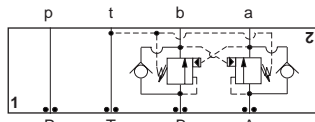


Function

On B Pilot from A, Vent to T

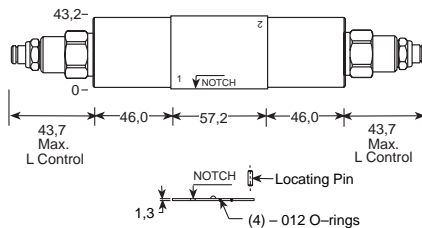
Assembly Model Code*
CWC*-LGN-MBB

*The 4th digit of the Model Code must be entered to specify counterbalance pilot ratio. Add modifier /S to order SG Iron for pressure rating over 210 bar.



Assembly Model Code*
CWC*-LHN-MBY

*The 4th digit of the Model Code must be entered to specify counterbalance pilot ratio. Add modifier /S to order SG Iron for pressure rating over 210 bar.



Function

On A and B (Cross-Piloted, vents to T)

Assembly Model Code*
CWC*-LGN-MBY

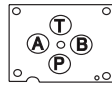
*The 4th digit of the Model Code must be entered to specify counterbalance pilot ratio. Add modifier /S to order SG Iron for pressure rating over 210 bar.

NOTES: Page 50 for cartridge model CB**_*** and page 70 for cartridge model CW**_*** show performance curves, technical tips, and options. See Page 140 for technical information about sandwich bodies including ISO interface patterns, mounting instructions, studrods, and studkits. Go to www.sunhydraulics.com for more product information. Model Codes printed in red are Preferred Products and are readily available.

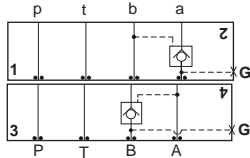
ISO 03 / CETOP 3 PILOT-TO-OPEN CHECK VALVES

T-11A / T-21A Cavity

All sandwich bodies shown below are 44,5 mm wide



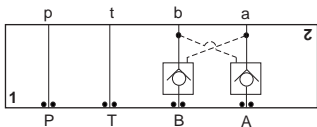
PILOT OPERATED



Assembly Model Code*

CKCB-XCN-EBA/M

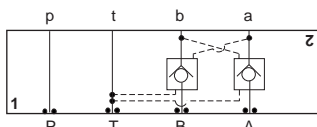
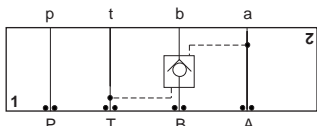
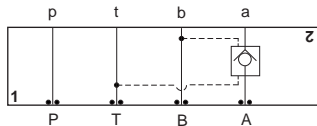
*Add modifier /T to order SG Iron for pressure rating over 210 bar.



Assembly Model Code*

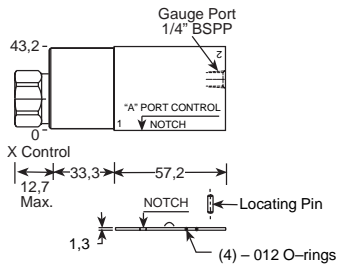
CKCB-XCN-EBY

*Add modifier /S to order SG Iron for pressure rating over 210 bar.



VENTED

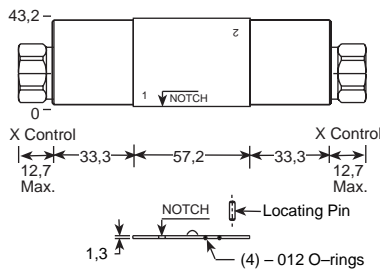
STANDARD



Function

On A Pilot from B

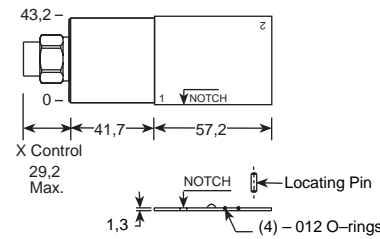
On B Pilot from A



Function

On A and B (Cross-Piloted)

VENTED



Function

On A Pilot from B Vent to T

Assembly Model Code*

CVCV-XCN-MBA

*Add modifier /S to order SG Iron for pressure rating over 210 bar.

Function

On B Pilot from A, Vent to T

Assembly Model Code*

CVCV-XCN-MBB

*Add modifier /S to order SG Iron for pressure rating over 210 bar.

Function

On A and B Cross-Piloted, Vents to T

Assembly Model Code*

CVCV-XCN-MBY

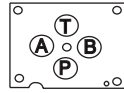
*Add modifier /S to order SG Iron for pressure rating over 210 bar.

NOTES: Page 78 for cartridge models CK**_*** and page 94 for cartridge model CV*V_*** show performance curves, technical tips, and options. See Page 140 for technical information about sandwich bodies including ISO interface patterns, mounting instructions, studrods, and studkits. Go to www.sunhydraulics.com for more product information.

Model Codes printed in red are Preferred Products and are readily available.

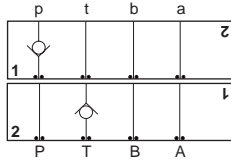
ISO 03 / CETOP 3 CHECK VALVES

T-13A / T-5A Cavity



All sandwich bodies shown below are 44,5 mm wide

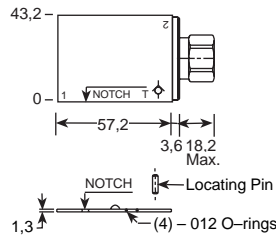
FREE FLOW PORT 1 TO 2



Assembly Model Code*

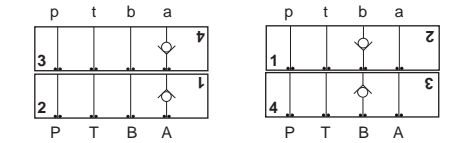
CXDA-XCN-GDP

*Add modifier /S to order SG Iron for pressure rating over 210 bar.



Function

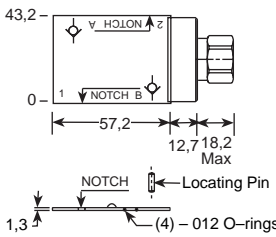
On P
On T



Assembly Model Code*

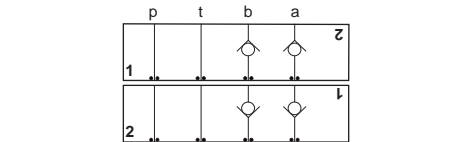
CXDA-XCN-GDA

*Add modifier /S to order SG Iron for pressure rating over 210 bar.



Function

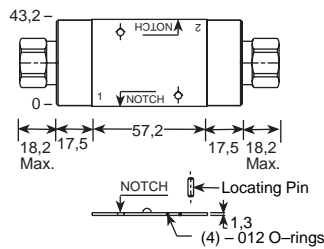
On A Free Flow Into Valve
On A Free Flow Out Valve
On B Free Flow Into Valve
On B Free Flow Out Valve



Assembly Model Code*

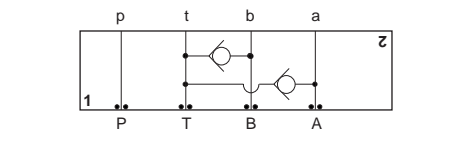
CXDA-XCN-GDY

*Add modifier /S to order SG Iron for pressure rating over 210 bar.



Function

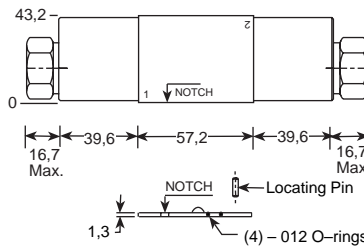
On A and B, Free Flow Out of Valve
On A and B, Free Flow Into Valve



Assembly Model Code*

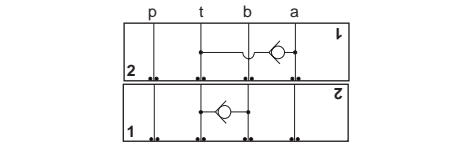
CXFA-XAN-GDF

*Add modifier /S to order SG Iron for pressure rating over 210 bar.



Function

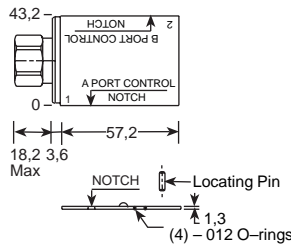
T to A and B (High Capacity)



Assembly Model Code*

CXDA-XAN-GDW

*Add modifier /S to order SG Iron for pressure rating over 210 bar.



Function

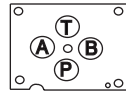
T to A
T to B

NOTES: Page 102 for cartridge models CX*A-*** and CX*D-*** show performance curves, technical tips, and options. See Page 140 for technical information about sandwich bodies including ISO interface patterns, mounting instructions, studrods, and studkits. Go to www.sunhydraulics.com for more product information. Model Codes printed in red are Preferred Products and are readily available.

Sandwich Assemblies

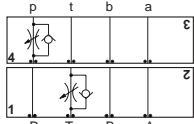
ISO 03 / CETOP 3 FLOW CONTROL / PRIORITY FLOW CONTROL VALVES

T-13A / T-11A Cavity



All sandwich bodies shown below are 44,5 mm wide

FULLY ADJUSTABLE NEEDLE

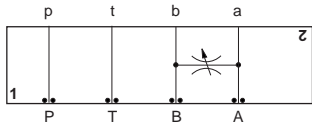


Note: Reverse Checks on FDBA-LAN-GBP Only

Assembly Model Code*

NFCC-LCN-GBP

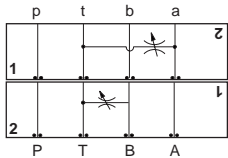
*Add modifier /S to order SG Iron for pressure rating over 210 bar.



Assembly Model Code*

NFCC-LCN-GBS

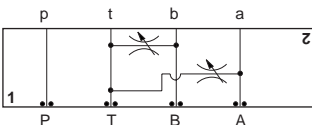
*Add modifier /S to order SG Iron for pressure rating over 210 bar.



Assembly Model Code*

NFCC-LCN-GBW

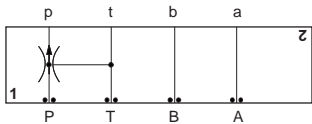
*Add modifier /S to order SG Iron for pressure rating over 210 bar.



Assembly Model Code*

NFCC-LCN-GBX

*Add modifier /S to order SG Iron for pressure rating over 210 bar.



Assembly Model Code*

FRCA-LAN-WBN**

*Add modifier /S to order SG Iron for pressure rating over 210 bar.

**Customer must specify priority flow.

FULLY ADJUSTABLE NEEDLE PRESSURE COMPENSATED WITH REVERSE FREE FLOW CHECK

Function

Meter-In **P**

Meter-Out **T**

Assembly Model Code*

FDBA-LAN-GBP

*Add modifier /S to order SG Iron for pressure rating over 210 bar.

Function

Bleed-Off **A** to **B** and **B** to **A**

Function

Bleed-Off **A** to **T**

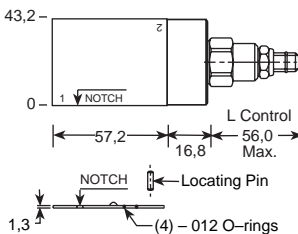
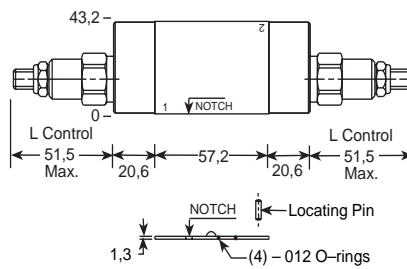
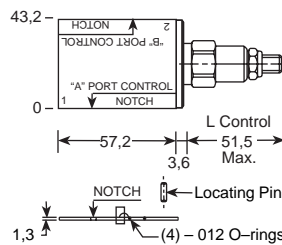
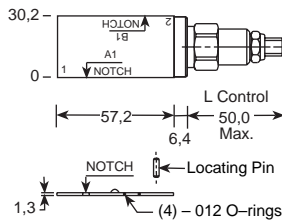
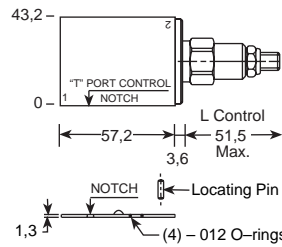
Bleed-Off **B** to **T**

Function

Bleed-Off **A** and **B** to **T**

Function

Priority Flow on **P**, Bypass to **T**

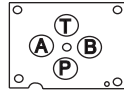


PRIORITY FLOW CONTROL FIXED ORIFICE

NOTES: Page 110 for cartridge model NF*C-***, page 126 for FD*A-***, and page 134 for FR*A-*** show performance curves, technical tips, and options. See Page 140 for technical information about sandwich bodies including ISO interface patterns, mounting instructions, studrods, and studkits. Go to www.sunhydraulics.com for more product information. Model Codes printed in red are Preferred Products and are readily available.

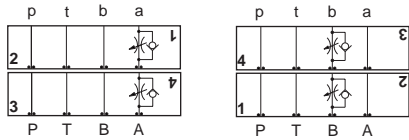
ISO 03 / CETOP 3 FLOW CONTROL VALVES

T-13A Cavity



All sandwich bodies shown below are 44,5 mm wide

FULLY ADJUSTABLE NEEDLE WITH REVERSE FREE FLOW CHECK



Assembly Model Code*
NCCB-LCN-GBA

*Add modifier /S to order SG Iron for pressure rating over 210 bar.

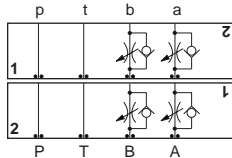
FULLY ADJUSTABLE, PRESSURE COMPENSATED WITH FREE FLOW CHECK

Function

Meter-In A
Meter-Out A
Meter-In B
Meter-Out B

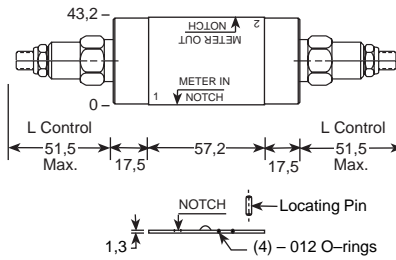
Assembly Model Code*
FDBA-LAN-GBA

*Add modifier /S to order SG Iron for pressure rating over 210 bar.



Assembly Model Code*
NCCB-LCN-GBY

*Add modifier /S to order SG Iron for pressure rating over 210 bar.

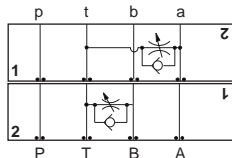


Function

Meter-In A and B
Meter-Out A and B

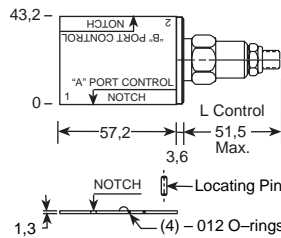
Assembly Model Code*
FDBA-LAN-GBY

*Add modifier /S to order SG Iron for pressure rating over 210 bar.



Assembly Model Code*
NCCB-LAN-GBW

*Add modifier /S to order SG Iron for pressure rating over 210 bar.

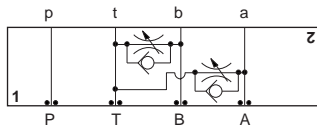


Function

Bleed-Off A to T
Bleed-Off B to T

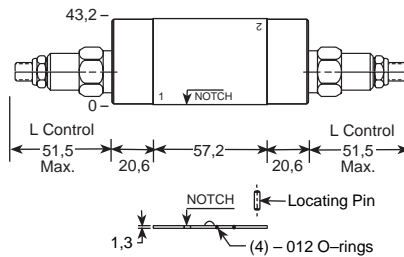
Assembly Model Code*
FDBA-LAN-GBW

*Add modifier /S to order SG Iron for pressure rating over 210 bar.



Assembly Model Code*
NCCB-LAN-GBX

*Add modifier /S to order SG Iron for pressure rating over 210 bar.



Function

Bleed-Off A and B to T

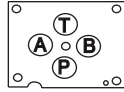
Assembly Model Code*
FDBA-LAN-GBX

*Add modifier /S to order SG Iron for pressure rating over 210 bar.

NOTES: Page 110 for cartridge model NC*B-*** and page 126 for FD*A-*** show performance curves, technical tips, and options. See Page 140 for technical information about sandwich bodies including ISO interface patterns, mounting instructions, studrods, and studkits. Go to www.sunhydraulics.com for more product information. Model Codes printed in red are Preferred Products and are readily available.

ISO 03 / CETOP 3 FLOW CONTROL VALVES (RAPID ADVANCE - FINE FEED)

T-13A Cavity



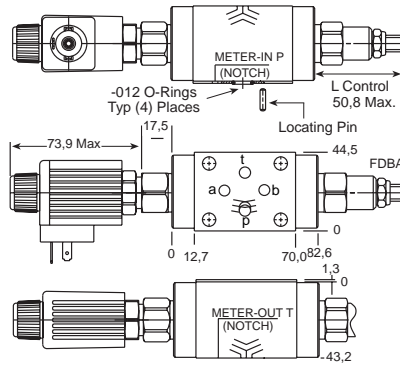
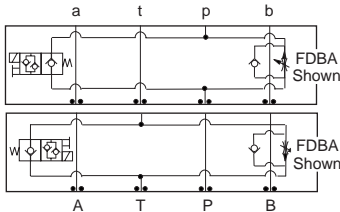
All sandwich bodies shown below are 44,5 mm wide

FULLY ADJUSTABLE, PRESSURE COMPENSATED WITH FREE FLOW CHECK

Function

Meter-In **P**, Solenoid Normally Closed

Meter-Out **T**, Solenoid Normally Closed



Coil must be selected separately. See page 248.

Assembly
Model Code*

X2CD-LAN-CA

*Add modifier **/S** to order SG Iron for pressure rating over 210 bar.

Assembly
Model Code*

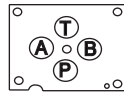
X2CD-LAN-CA

*Add modifier **/S** to order SG Iron for pressure rating over 210 bar.

NOTES: Page 126 for cartridge model FD*A-*** shows performance curves, technical tips, and options.
See Page 140 for technical information about sandwich bodies including ISO interface patterns, mounting instructions, studrods, and studkits.
Go to www.sunhydraulics.com for more product information.

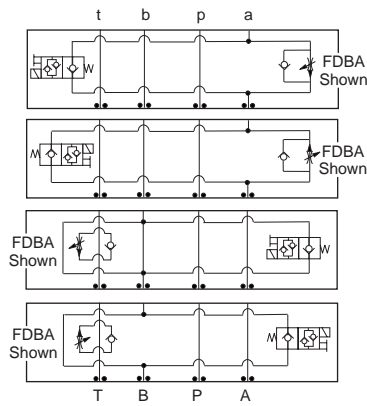
**ISO 03 / CETOP 3 FLOW CONTROL VALVES
(RAPID ADVANCE - FINE FEED)**

T-13A Cavity



All sandwich bodies shown below are 44,5 mm wide

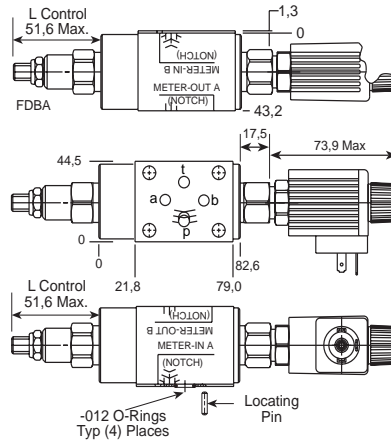
FULLY ADJUSTABLE, PRESSURE COMPENSATED WITH FREE FLOW CHECK



Assembly Model Code*

X4CD-LAN-CA

*Add modifier /S to order SG Iron for pressure rating over 210 bar.



Coil must be selected separately. See page 248.

Assembly Model Code*

X4CD-LAN-CA

*Add modifier /S to order SG Iron for pressure rating over 210 bar.

Function

Meter-In **A**, Solenoid Normally Closed

Meter-Out **A**, Solenoid Normally Closed

Meter-In **B**, Solenoid Normally Closed

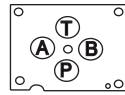
Meter-Out **B**, Solenoid Normally Closed

NOTES: Page 110 for cartridge models NF*C-*** and NC*B-*** show performance curves, technical tips, and options. See Page 140 for technical information about sandwich bodies including ISO interface patterns, mounting instructions, studrods, and studkits. Go to www.sunhydraulics.com for more product information.

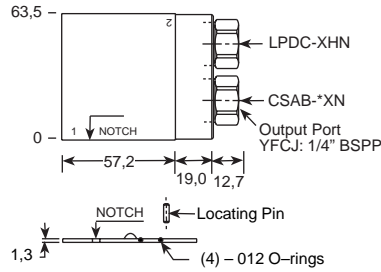
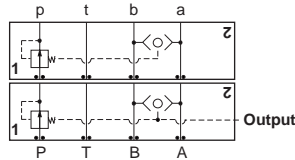
Sandwich Assemblies

**ISO 03 / CETOP 3 CIRCUIT SAVERS
(PRESSURE COMPENSATOR / REGENERATIVE / LOAD SENSING / PILOT CHOKE PACK)**

T-11A / T-13A Cavity



All sandwich bodies shown below are 44,5 mm wide

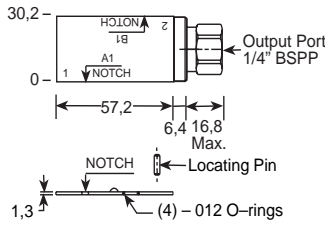
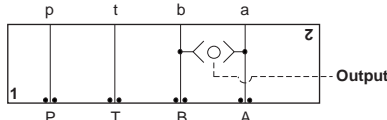


Function

YFCG: Pressure Compensator (Restrictive), 14 bar
YFCJ: Pressure Compensator (Restrictive), 14 bar with external Load-Sensing Port

External Shuttle Port	Assembly Model Code*
None	YFCG-XHN-AA/M
1/4" BSPP	YFCJ-XHN-AA/M

*Add modifier /**T** to order SG Iron for pressure rating over 210 bar.



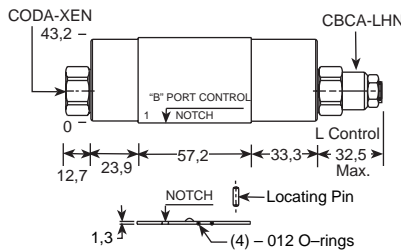
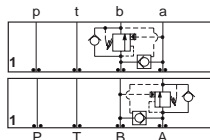
Function

Shuttle A and B (Output External)

Assembly Model Code*

CSAA-BXN-GBS

*Add modifier /**S** to order SG Iron for pressure rating over 210 bar.



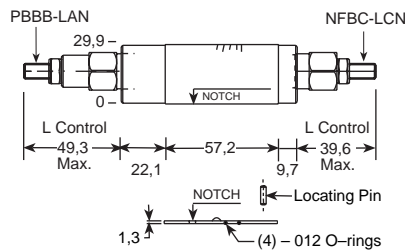
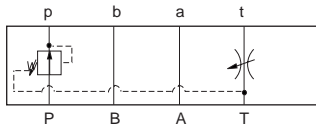
Function

B to A Pressure Sensing Regenerative Circuit
A to B Pressure Sensing Regenerative Circuit

Assembly Model Code*

YDCA-LHN-AA

*Add modifier /**S** to order SG Iron for pressure rating over 210 bar.



Function

Pilot Choke Pack

(Used typically to control main stage shift time on pilot operated ISO/CETOP directional valves.)

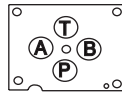
Assembly Model Code*

YNAA-LDN-AA

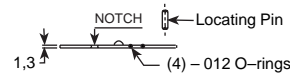
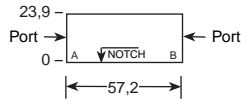
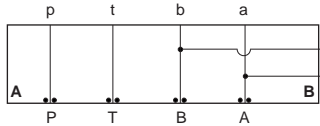
*Add modifier /**S** to order SG Iron for pressure rating over 210 bar.

NOTES: See Page 140 for technical information about sandwich bodies including ISO interface patterns, mounting instructions, studrods, and studkits. Go to www.sunhydraulics.com for more product information. Model Codes printed in red are Preferred Products and are readily available.

**ISO 03 / CETOP 3 CIRCUIT SAVERS
(TAP IN MANIFOLD / ADAPTOR PLATE / COVER PLATE)**



All sandwich bodies shown below are 44,5 mm wide

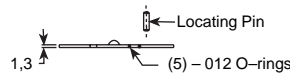
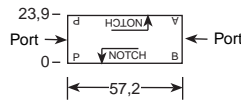
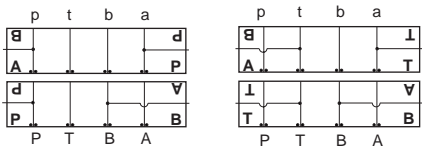


Function

A and B Tap in Manifold

Ports A, B Assembly Model Code*
1/4" BSPP ZVB

*Add modifier /S to order SG Iron for pressure rating over 210 bar.

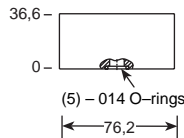
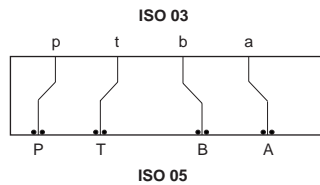


Function

P and A Tap in Manifold
P and B Tap in Manifold
T and A Tap in Manifold
T and B Tap in Manifold

External Port Assembly Model Code*
1/4" BSPP ZVC

*Add modifier /S to order SG Iron for pressure rating over 210 bar.

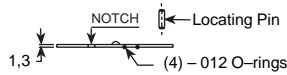
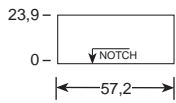
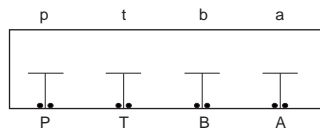


Function

Adaptor from ISO 05 to ISO 03.

Assembly Model Code*
ZVT

*Add modifier /S to order SG Iron for pressure rating over 210 bar.



Function

Cover Plate with All Ports Blocked

Assembly Model Code*
ZJR

*Add modifier /S to order SG Iron for pressure rating over 210 bar.

NOTE: See Page 140 for technical information about sandwich bodies including ISO interface patterns, mounting instructions, studrods, and studkits. Go to www.sunhydraulics.com for more product information. Model Codes printed in red are Preferred Products and are readily available.