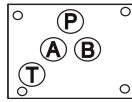


ISO 05 / CETOP 5 RELIEF VALVES
(SIDE PORTED SUBPLATE / REAR PORTED SUBPLATE / SIDE PORTED SUBPLATE WITH GASKET MOUNTED TANK PORT)

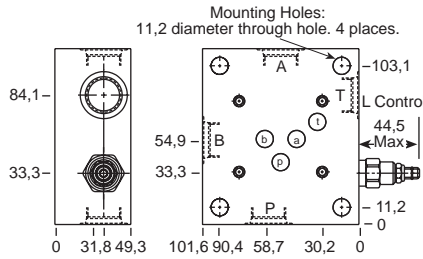
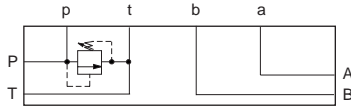
T-10A Cavity



All subplates shown below are 114,3 mm wide

PILOT OPERATED

DIRECT ACTING



Function

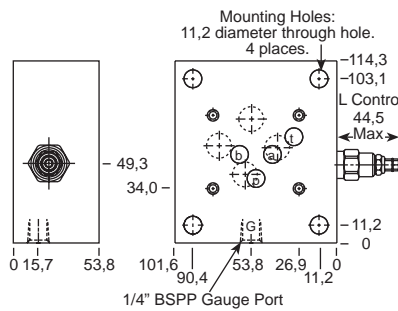
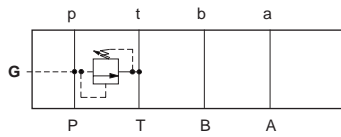
P to T

Ports
A, B, P, T
1/2" BSPP
Assembly Model Code*
RPEC-LAN-FSV

Ports
A, B, P, T
1/2" BSPP
Assembly Model Code*
RDDA-LAN-FSV

*Add modifier /S to order SG Iron for pressure rating over 210 bar.

*Add modifier /S to order SG Iron for pressure rating over 210 bar.



Function

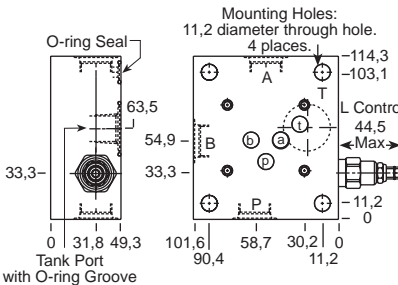
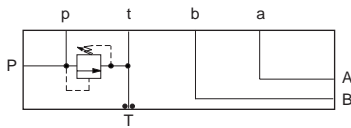
P to T

Ports
A, B, P, T
1/2" BSPP
Assembly Model Code*
RPEC-LAN-FRV

Ports
A, B, P, T
1/2" BSPP
Assembly Model Code*
RDDA-LAN-FRV

*Add modifier /S to order SG Iron for pressure rating over 210 bar.

*Add modifier /S to order SG Iron for pressure rating over 210 bar.



Function

P to T

Ports
A, B, P, T
1/2" BSPP
Assembly Model Code*
RPEC-LAN-FTV

Ports
A, B, P, T
1/2" BSPP
Assembly Model Code*
RDDA-LAN-FTV

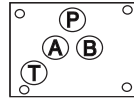
*Add modifier /S to order SG Iron for pressure rating over 210 bar.

*Add modifier /S to order SG Iron for pressure rating over 210 bar.

NOTES: Page 2 for cartridge models RP*C-*** and RD*A-*** show performance curves, technical tips, and options.
 See page 140 for technical information about sandwich bodies including ISO interface patterns, mounting instructions, studrods, and studkits.
 Go to www.sunhydraulics.com for more product information.
 Model Codes printed in red are Preferred Products and are readily available.

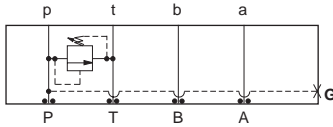
ISO 05 / CETOP 5 RELIEF VALVES

T-10A Cavity



All sandwich bodies shown below are 63,5 mm wide

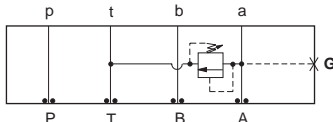
PILOT OPERATED



Assembly Model Code*

RPEC-LAN-CBE/M

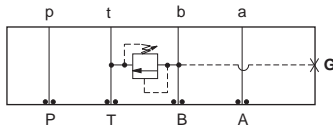
*Add modifier **/T** to order SG Iron for pressure rating over 210 bar.



Assembly Model Code*

RPEC-LAN-CBF/M

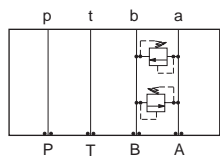
*Add modifier **/T** to order SG Iron for pressure rating over 210 bar.



Assembly Model Code*

RPEC-LAN-CBG/M

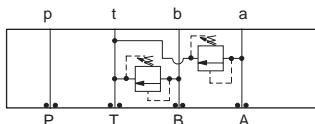
*Add modifier **/T** to order SG Iron for pressure rating over 210 bar.



Assembly Model Code*

RPEC-LAN-CBI

*Add modifier **/S** to order SG Iron for pressure rating over 210 bar.



Assembly Model Code*

RPEC-LAN-CBD

*Add modifier **/S** to order SG Iron for pressure rating over 210 bar.

NOTES: Page 2 for cartridge models RP*C-*** and RD*A-*** show performance curves, technical tips, and options. See page 140 for technical information about sandwich bodies including ISO interface patterns, mounting instructions, studrods, and studkits. Go to www.sunhydraulics.com for more product information. Model Codes printed in red are Preferred Products and are readily available.

DIRECT ACTING

Function

P to T

Assembly Model Code*

RDDA-LAN-CBE/M

*Add modifier **/T** to order SG Iron for pressure rating over 210 bar.

Function

A to T

Assembly Model Code*

RDDA-LAN-CBF/M

*Add modifier **/T** to order SG Iron for pressure rating over 210 bar.

Function

B to T

Assembly Model Code*

RDDA-LAN-CBG/M

*Add modifier **/T** to order SG Iron for pressure rating over 210 bar.

Function

A to B and B to A
(Cross-port)

Assembly Model Code*

RDDA-LAN-CBI

*Add modifier **/S** to order SG Iron for pressure rating over 210 bar.

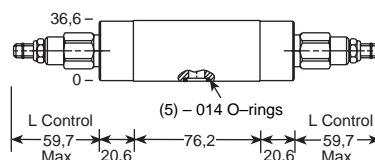
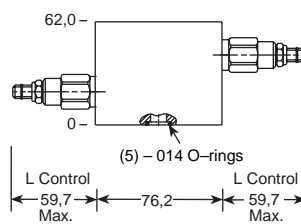
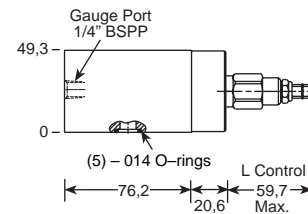
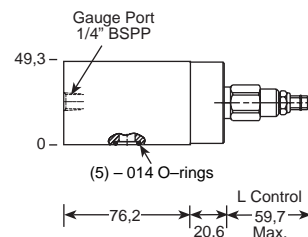
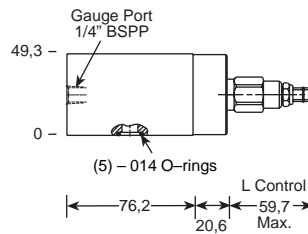
Function

A and B to T

Assembly Model Code*

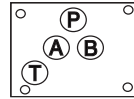
RDDA-LAN-CBD

*Add modifier **/S** to order SG Iron for pressure rating over 210 bar.



ISO 05 / CETOP 5 RELIEF VALVES

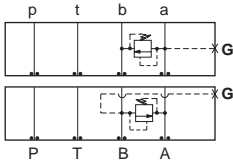
T-10A Cavity/T-2A Cavity



All sandwich bodies shown below are 63,5 mm wide

PILOT OPERATED

DIRECT ACTING



Function

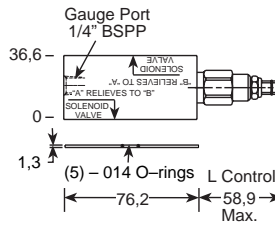
A to B

B to A

Assembly Model Code*

RPEC-LAN-CBH/M

*Add modifier /T to order SG Iron for pressure rating over 210 bar.



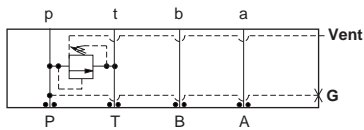
Assembly Model Code*

RDDA-LAN-CBH/M

*Add modifier /T to order SG Iron for pressure rating over 210 bar.

Function

P to T (Externally Vented)



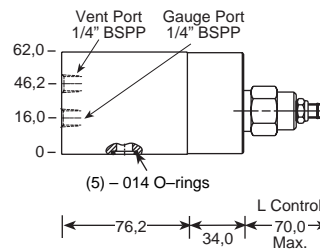
Vent Port

Assembly Model Code*

1/4" BSPP

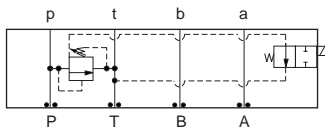
RVEA-LAN-BBC/M

*Add modifier /T to order SG Iron for pressure rating over 210 bar.



Function

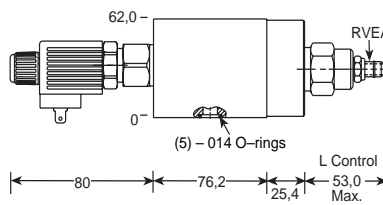
P to T
(Normally Open, Solenoid Vented)



Assembly Model Code*

XRED-LAN-HA

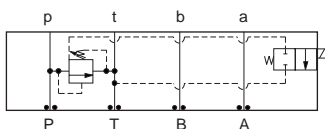
*Add modifier /S to order SG Iron for pressure rating over 210 bar.



Coil must be selected separately. See page 248.

Function

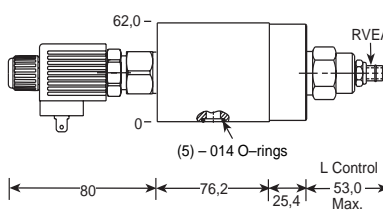
P to T
(Normally Closed, Solenoid Vented)



Assembly Model Code*

XRED-LAN-CA

*Add modifier /S to order SG Iron for pressure rating over 210 bar.

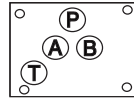


Coil must be selected separately. See page 248.

NOTES: Page 2 for cartridge models RP*C-***, RD*A-*** and page 12 for cartridge model RV*A-*** show performance curves, technical tips, and options. See page 140 for technical information about sandwich bodies including ISO interface patterns, mounting instructions, studrods, and studkits. Go to www.sunhydraulics.com for more product information.

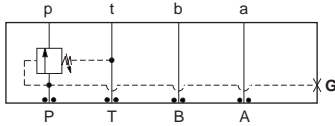
ISO 05 / CETOP 5 SEQUENCE VALVES

T-2A Cavity



All sandwich bodies shown below are 63,5 mm wide

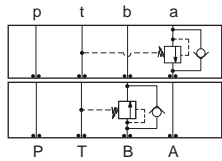
PILOT OPERATED



Assembly Model Code*

RSFC-LAN-BBW/M

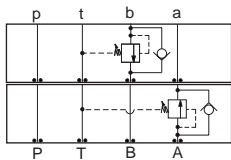
*Add modifier **/T** to order SG Iron for pressure rating over 210 bar.



Assembly Model Code*

RSFC-LAN-BB4

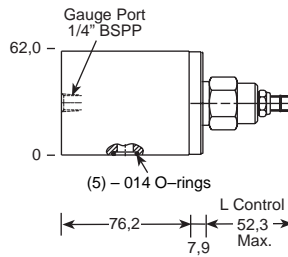
*Add modifier **/S** to order SG Iron for pressure rating over 210 bar.



Assembly Model Code*

RSFC-LAN-BB5

*Add modifier **/S** to order SG Iron for pressure rating over 210 bar.



DIRECT ACTING

Function

In to **P**

Assembly Model Code*

SXEA-LAN-BBW/M

*Add modifier **/T** to order SG Iron for pressure rating over 210 bar.

Function

Into **A** (Reverse Free Flow Check)

Out of **B** (Reverse Free Flow Check)

Assembly Model Code*

SXEA-LAN-BB4

*Add modifier **/S** to order SG Iron for pressure rating over 210 bar.

Function

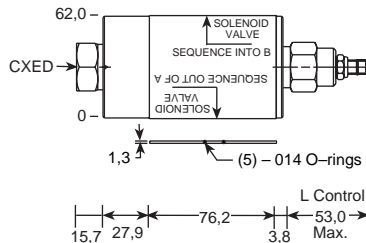
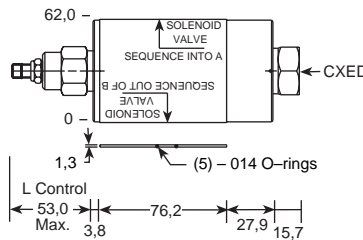
Into **B** (Reverse Free Flow Check)

Out of **A** (Reverse Free Flow Check)

Assembly Model Code*

SXEA-LAN-BB5

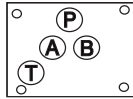
*Add modifier **/S** to order SG Iron for pressure rating over 210 bar.



NOTES: Page 20 for cartridge model RS*C-*** and SX*A-*** and page 102 for CX*D-*** show performance curves, technical tips, and options. See page 140 for technical information about sandwich bodies including ISO interface patterns, mounting instructions, studrods, and studkits. Go to www.sunhydraulics.com for more product information. Model Codes printed in red are Preferred Products and are readily available.

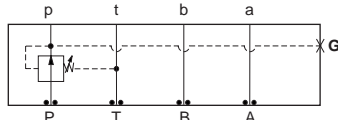
ISO 05 / CETOP 5 REDUCING VALVES

T-2A Cavity



All sandwich bodies shown below are 63,5 mm wide

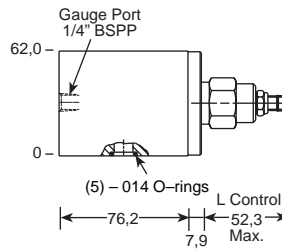
PILOT OPERATED



Assembly Model Code*

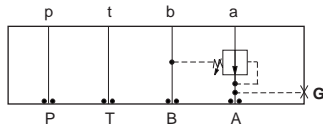
PBFB-LAN-BBP/M

*Add modifier **T** to order SG Iron for pressure rating over 210 bar.



Function

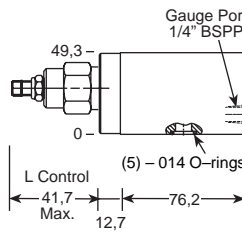
On P Drained to T



Assembly Model Code*

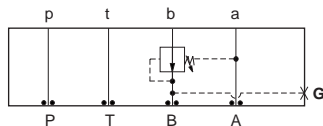
PBFB-LAN-BBA/M

*Add modifier **T** to order SG Iron for pressure rating over 210 bar.



Function

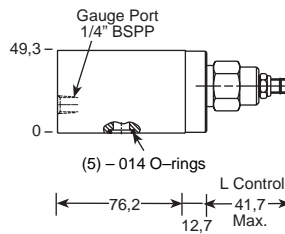
On A Drained to B



Assembly Model Code*

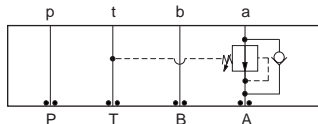
PBFB-LAN-BBB/M

*Add modifier **T** to order SG Iron for pressure rating over 210 bar.



Function

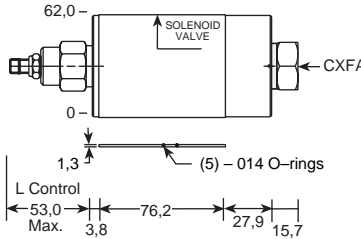
On B Drained to A



Assembly Model Code*

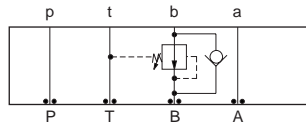
PBFB-LAN-BB2

*Add modifier **S** to order SG Iron for pressure rating over 210 bar.



Function

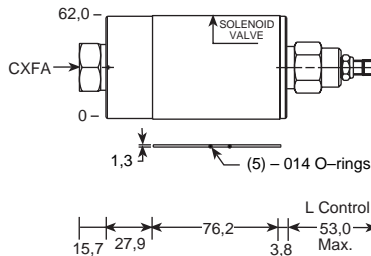
On A Drain to T
(Reverse Free Flow Check)



Assembly Model Code*

PBFB-LAN-BB3

*Add modifier **S** to order SG Iron for pressure rating over 210 bar.



Function

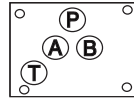
On B Drain to T
(Reverse Free Flow Check)

NOTES: Page 34 for cartridge model PB*B-*** and page 102 for cartridge model CX*A-*** show performance curves, technical tips, and options. See page 140 for technical information about sandwich bodies including ISO interface patterns, mounting instructions, studrods, and studkits. Go to www.sunhydraulics.com for more product information. Model Codes printed in red are Preferred Products and are readily available.

Sandwich Assemblies

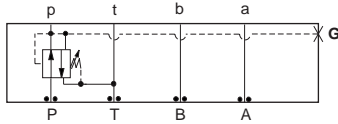
ISO 05 / CETOP 5 REDUCING / RELIEVING VALVES

T-2A Cavity



All sandwich bodies shown below are 63,5 mm wide

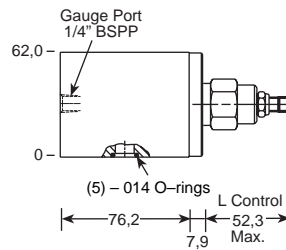
PILOT OPERATED



Assembly Model Code*

PPFB-LAN-BBP/M

*Add modifier /T to order SG Iron for pressure rating over 210 bar.



DIRECT ACTING

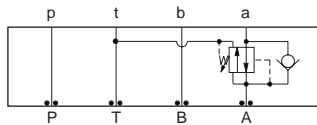
Function

On P, Tank to T

Assembly Model Code*

PRFB-LAN-BBP/M

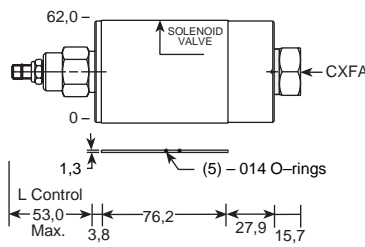
*Add modifier /T to order SG Iron for pressure rating over 210 bar.



Assembly Model Code*

PPFB-LAN-BB2

*Add modifier /S to order SG Iron for pressure rating over 210 bar.



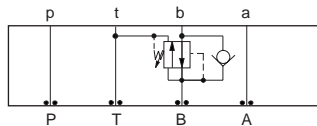
Function

On A, Tank to T
(Reverse Free Flow Check)

Assembly Model Code*

PRFB-LAN-BB2

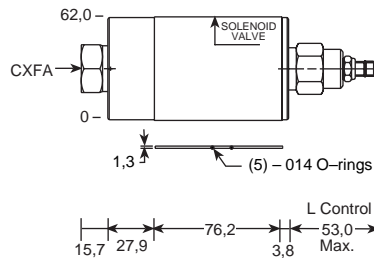
*Add modifier /S to order SG Iron for pressure rating over 210 bar.



Assembly Model Code*

PPFB-LAN-BB3

*Add modifier /S to order SG Iron for pressure rating over 210 bar.



Function

On B, Tank to T
(Reverse Free Flow Check)

Assembly Model Code*

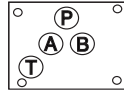
PRFB-LAN-BB3

*Add modifier /S to order SG Iron for pressure rating over 210 bar.

NOTES: Page 42 for cartridge models PP*B-*** and PR*B-*** show performance curves, technical tips, and options.
See page 140 for technical information about sandwich bodies including ISO interface patterns, mounting instructions, studrods, and studkits.
Go to www.sunhydraulics.com for more product information.
Model Codes printed in red are Preferred Products and are readily available.

ISO 05 / CETOP 5 COUNTERBALANCE VALVES

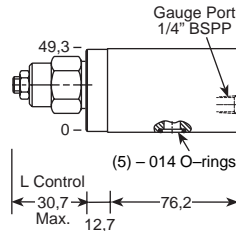
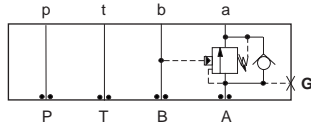
T-2A Cavity



All sandwich bodies shown below are 63,5 mm wide

PILOT RATIOS
3:1 (CBEA), 1.5:1 (CBEB), 2:1 (CBEY)

PILOT RATIOS
2.3:1 (CBEL), 4.5:1 (CBEG), 10:1 (CBEH)



Assembly Model Code*
CBE*-LHN-BBA/M

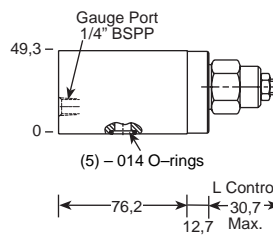
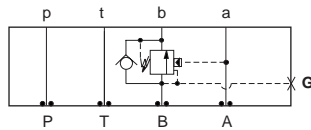
*The 4th digit of the Model Code must be entered to specify counterbalance pilot ratio. Add modifier /T to order SG Iron for pressure rating over 210 bar.

Function
On A, Pilot from B

Assembly Model Code*
CBE*-LJN-BBA/M

*The 4th digit of the Model Code must be entered to specify counterbalance pilot ratio. Add modifier /T to order SG Iron for pressure rating over 210 bar.

Function
On B, Pilot from A



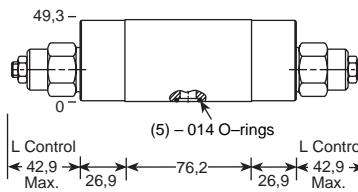
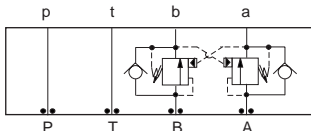
Assembly Model Code*
CBE*-LHN-BBB/M

*The 4th digit of the Model Code must be entered to specify counterbalance pilot ratio. Add modifier /T to order SG Iron for pressure rating over 210 bar.

Assembly Model Code*
CBE*-LJN-BBB/M

*The 4th digit of the Model Code must be entered to specify counterbalance pilot ratio. Add modifier /T to order SG Iron for pressure rating over 210 bar.

Function
On A and B (Cross-Piloted)



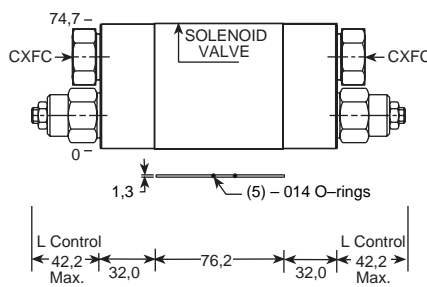
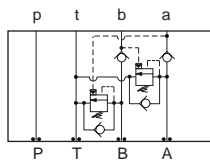
Assembly Model Code*
CBE*-LHN-BBY

*The 4th digit of the Model Code must be entered to specify counterbalance pilot ratio. Add modifier /S to order SG Iron for pressure rating over 210 bar.

Assembly Model Code*
CBE*-LJN-BBY

*The 4th digit of the Model Code must be entered to specify counterbalance pilot ratio. Add modifier /S to order SG Iron for pressure rating over 210 bar.

Function
Cushion Lock Circuit
On A and B



Assembly Model Code*
CBE*-LHN-BB8

*The 4th digit of the Model Code must be entered to specify counterbalance pilot ratio. Add modifier /S to order SG Iron for pressure rating over 210 bar.

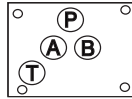
Assembly Model Code*
CBE*-LJN-BB8

*The 4th digit of the Model Code must be entered to specify counterbalance pilot ratio. Add modifier /S to order SG Iron for pressure rating over 210 bar.

NOTES: Page 50 for cartridge model CB**.* show performance curves, technical tips, and options. See page 140 for technical information about sandwich bodies including ISO interface patterns, mounting instructions, studrods, and studkits. Go to www.sunhydraulics.com for more product information. Model Codes printed in red are Preferred Products and are readily available.

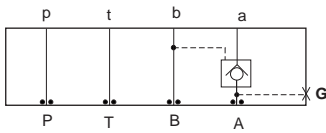
ISO 05 / CETOP 5 PILOT-TO-OPEN CHECK VALVES

T-2A Cavity



All sandwich bodies shown below are 63,5 mm wide

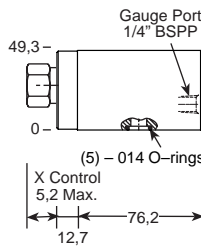
PILOT OPERATED



Assembly Model Code*

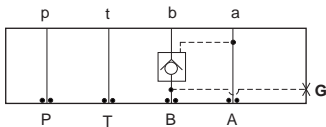
CKEB-XCN-BBA/M

*Add modifier **T** to order SG Iron for pressure rating over 210 bar.



Function

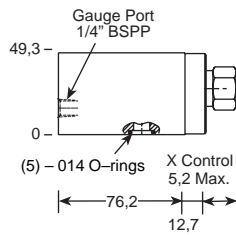
On A, Pilot from B



Assembly Model Code*

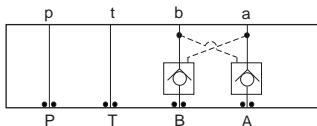
CKEB-XCN-BBB/M

*Add modifier **T** to order SG Iron for pressure rating over 210 bar.



Function

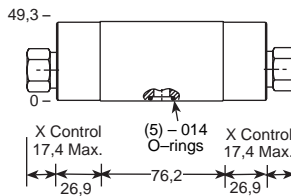
On B, Pilot from A



Assembly Model Code*

CKEB-XCN-BBY

*Add modifier **S** to order SG Iron for pressure rating over 210 bar.



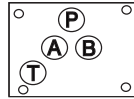
Function

On A and B (Cross-piloted)

NOTES: Page 78 for cartridge model CK**.* show performance curves, technical tips, and options. See page 140 for technical information about sandwich bodies including ISO interface patterns, mounting instructions, studrods, and studkits. Go to www.sunhydraulics.com for more product information. Model Codes printed in red are Preferred Products and are readily available.

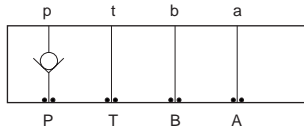
ISO 05 / CETOP 5 CHECK VALVES

T-5A Cavity



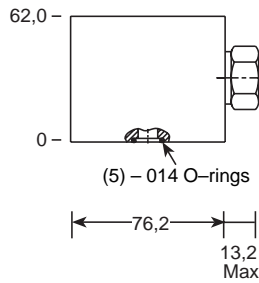
All sandwich bodies shown below are 63,5 mm wide

**FREE FLOW
PORT 1 TO 2**



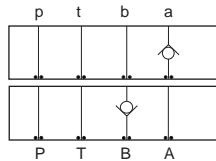
Assembly Model Code*
CXFA-XCN-DBP

*Add modifier /S to order SG Iron for pressure rating over 210 bar.



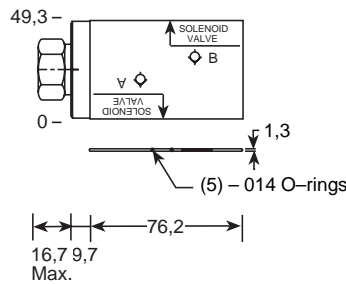
Function

On P



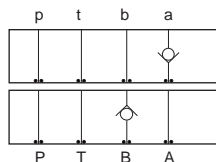
Assembly Model Code*
CXFA-XCN-DBK

*Add modifier /S to order SG Iron for pressure rating over 210 bar.



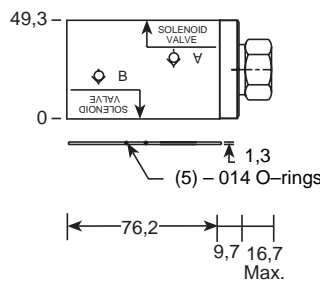
Function

On A, Free Flow Out of Valve
On B, Free Flow Into Valve



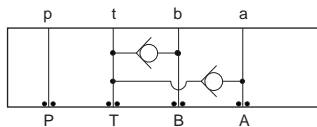
Assembly Model Code*
CXFA-XCN-DBJ

*Add modifier /S to order SG Iron for pressure rating over 210 bar.



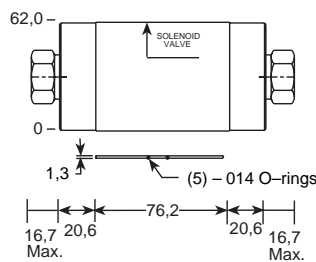
Function

On A, Free Flow Into Valve
On B, Free Flow Out of Valve



Assembly Model Code*
CXFA-XAN-DBW

*Add modifier /S to order SG Iron for pressure rating over 210 bar.



Function

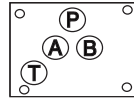
T to A and B

NOTES: Page 102 for cartridge models CX*A-*** and CX*D-*** show performance curves, technical tips, and options.
See page 140 for technical information about sandwich bodies including ISO interface patterns, mounting instructions, studrods, and studkits.
Go to www.sunhydraulics.com for more product information.
Model Codes printed in red are Preferred Products and are readily available.

Sandwich Assemblies

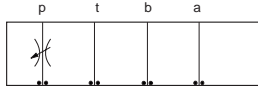
ISO 05 / CETOP 5 FLOW CONTROL VALVES

T-5A Cavity



All sandwich bodies shown below are 63,5 mm wide

FULLY ADJUSTABLE NEEDLE WITH REVERSE FREE FLOW CHECK



Note: No Check with NFDC Model

Assembly Model Code*

NFDC-LAN-DBP

*Add modifier /S to order SG Iron for pressure rating over 210 bar.

FULLY ADJUSTABLE PRESSURE COMPENSATED WITH FREE FLOW CHECK

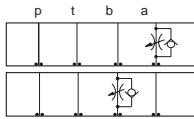
Function

Meter-In P

Assembly Model Code*

FDCB-LAN-DBP

*Add modifier /S to order SG Iron for pressure rating over 210 bar.

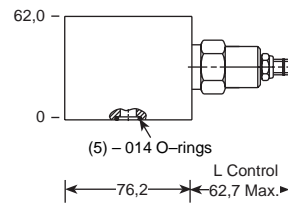


Note: Pressure Compensated Symbol Not Shown

Assembly Model Code*

NCEB-LAN-DBA

*Add modifier /S to order SG Iron for pressure rating over 210 bar.



Function

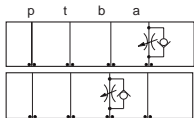
Meter-Out A

Meter-In B

Assembly Model Code*

FDCB-LAN-DBA

*Add modifier /S to order SG Iron for pressure rating over 210 bar.

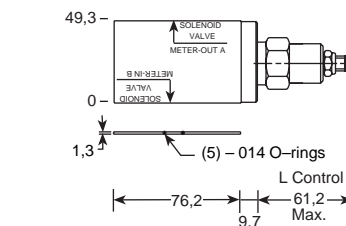


Note: Pressure Compensated Symbol Not Shown

Assembly Model Code*

NCEB-LAN-DBB

*Add modifier /S to order SG Iron for pressure rating over 210 bar.



Function

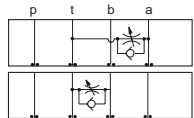
Meter-In A

Meter-Out B

Assembly Model Code*

FDCB-LAN-DBB

*Add modifier /S to order SG Iron for pressure rating over 210 bar.

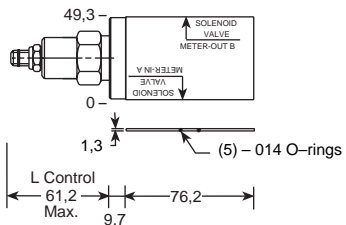


Note: Pressure Compensated Symbol Not Shown

Assembly Model Code*

NCEB-LAN-DBC

*Add modifier /S to order SG Iron for pressure rating over 210 bar.



Function

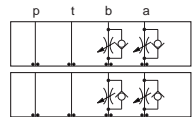
Bleed-Off A to T

Bleed-Off B to T

Assembly Model Code*

FDCB-LAN-DBC

*Add modifier /S to order SG Iron for pressure rating over 210 bar.

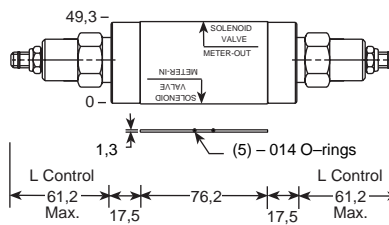


Note: Pressure Compensated Symbol Not Shown

Assembly Model Code*

NCEB-LAN-DBY

*Add modifier /S to order SG Iron for pressure rating over 210 bar.



Function

Meter-In A and B

Meter-Out A and B

Assembly Model Code*

FDCB-LAN-DBY

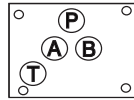
*Add modifier /S to order SG Iron for pressure rating over 210 bar.

NOTES: Page 110 for cartridge models NF*C-*** and NC*B-*** and page 126 for FD*B*** show performance curves, technical tips, and options. See page 140 for technical information about sandwich bodies including ISO interface patterns, mounting instructions, studrods, and studkits. Go to www.sunhydraulics.com for more product information. Model Codes printed in red are Preferred Products and are readily available.

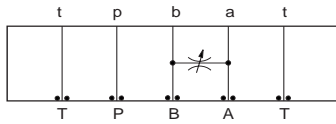
ISO 05 / CETOP 5 FLOW CONTROL VALVES

T-13A Cavity

All sandwich bodies shown below are 63,5 mm wide

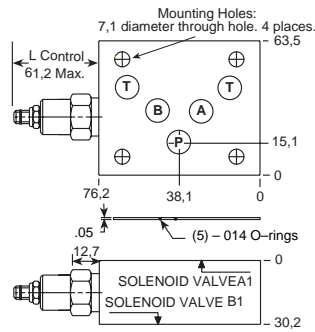


FULLY ADJUSTABLE NEEDLE



Assembly Model Code*
NFCC-LCN-DBS

*Add modifier /S to order SG Iron for pressure rating over 210 bar.



Function

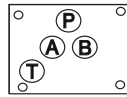
Meter A to B
Meter B to A

NOTES: Page 110 for cartridge models NF*C-*** show performance curves, technical tips, and options.
See page 140 for technical information about sandwich bodies including ISO interface patterns, mounting instructions, studrods, and studkits.
Go to www.sunhydraulics.com for more product information.

Sandwich Assemblies

**ISO 05 / CETOP 5 FLOW CONTROL VALVES
(RAPID ADVANCE AND FEED ASSEMBLIES)**

T-5A Cavity



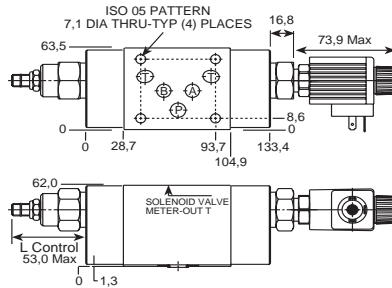
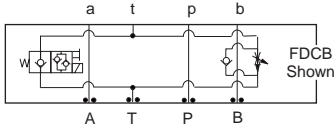
All sandwich bodies shown below are 63,5 mm wide

**FIXED ORIFICE TUNABLE,
PRESSURE COMPENSATED**

**FULLY ADJUSTABLE, PRESSURE
COMPENSATED WITH FREE FLOW CHECK**

Function

Meter-Out T, Solenoid Normally Closed



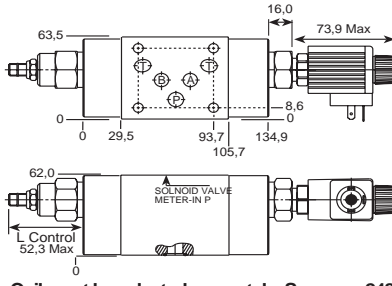
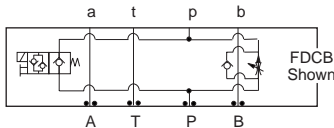
Coil must be selected separately. See page 248.

Assembly
Model Code*
X3DD-LAN-CA

*Add modifier /S to order SG Iron for pressure rating over 210 bar.

Function

Meter in P, Solenoid Normally Closed



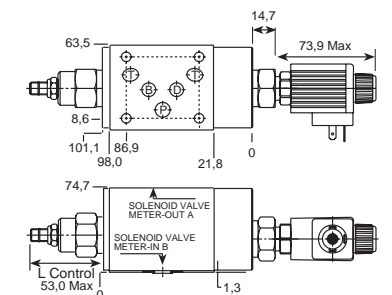
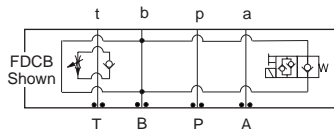
Coil must be selected separately. See page 248.

Assembly
Model Code*
X2DD-LAN-CA

*Add modifier /S to order SG Iron for pressure rating over 210 bar.

Function

Meter-Out A, Solenoid Normally Closed
Meter-In B, Solenoid Normally Closed



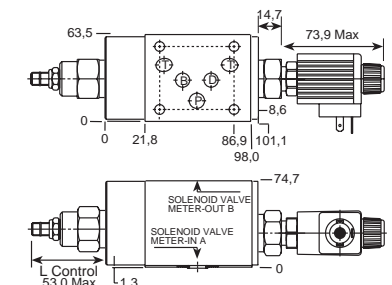
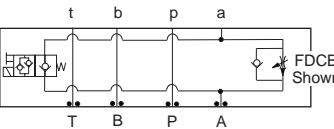
Coil must be selected separately. See page 248.

Assembly
Model Code*
X6DD-LAN-CA

*Add modifier /S to order SG Iron for pressure rating over 210 bar.

Function

Meter-In A, Solenoid Normally Closed
Meter-Out B, Solenoid Normally Closed



Coil must be selected separately. See page 248.

Assembly
Model Code*
X4DD-LAN-CA

*Add modifier /S to order SG Iron for pressure rating over 210 bar.

NOTES: Page 110 for cartridge models NF*C-*** and NC*B-*** show performance curves, technical tips, and options.
See page 140 for technical information about sandwich bodies including ISO interface patterns, mounting instructions, studrods, and studkits.
Go to www.sunhydraulics.com for more product information.