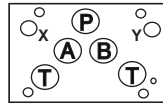


**ISO 05 / CETOP 5 WITH X AND Y RELIEF VALVES
(SIDE PORTED SUBPLATE)**

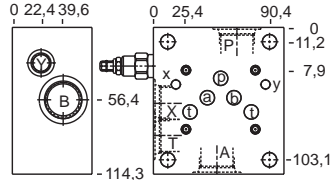
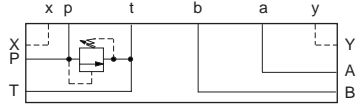
T-10A Cavity



All subplates shown below are 114,3 mm wide

PILOT OPERATED

DIRECT ACTING



Order Retainer and Seal Kits separately. (See page 141)

Function

P to T

Ports A, B, P, T	Ports X, Y	Assembly Model Code*
1/2" BSPP	1/4" BSPP	RPEC-LAN-ZHT
3/4" BSPP	1/4" BSPP	RPEC-LAN-ZHV

*Add modifier **/S** to order SG Iron for pressure rating over 210 bar.

Ports A, B, P, T	Ports X, Y	Assembly Model Code*
1/2" BSPP	1/4" BSPP	RDDA-LAN-ZHT
3/4" BSPP	1/4" BSPP	RDDA-LAN-ZHV

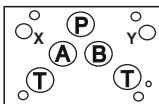
*Add modifier **/S** to order SG Iron for pressure rating over 210 bar.

NOTES: Page 2 for cartridge models RP*C-*** and RD*A-*** show performance curves, technical tips, and options. See page 140 for technical information about sandwich bodies including ISO interface patterns, mounting instructions, studrods, and studkits. Sun ISO 05 X, Y, sandwich bodies are furnished with pilot and drain connections. Seal plates are NOT supplied with these bodies, due to the differences in the European and U.S. seal plates. To order seal plates separately see page 141-142. Go to www.sunhydraulics.com for more product information.

Sandwich Assemblies

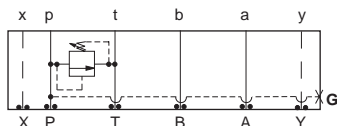
ISO 05 / CETOP 5 WITH X AND Y RELIEF VALVES

T-3A / T-10A Cavities



All sandwich bodies shown below are 63,5 mm wide

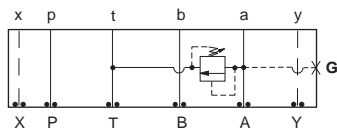
PILOT OPERATED



Assembly Model Code*

RPGC-LAN-CJP/M

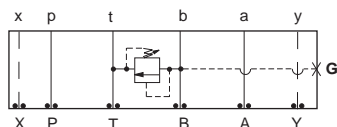
*Add modifier **/T** to order SG Iron for pressure rating over 210 bar.



Assembly Model Code*

RPGC-LAN-CJA/M

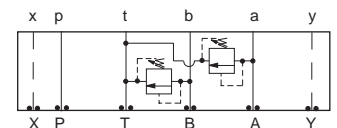
*Add modifier **/T** to order SG Iron for pressure rating over 210 bar.



Assembly Model Code*

RPGC-LAN-CJB/M

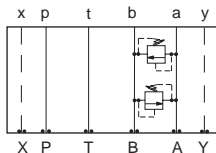
*Add modifier **/T** to order SG Iron for pressure rating over 210 bar.



Assembly Model Code*

RPGC-LAN-CJX

*Add modifier **/S** to order SG Iron for pressure rating over 210 bar.



Assembly Model Code*

RPEC-LAN-CJY

*Add modifier **/S** to order SG Iron for pressure rating over 210 bar.

DIRECT ACTING

Function

P to T (High Capacity)

Assembly Model Code*

RDFA-LAN-CJP/M

*Add modifier **/T** to order SG Iron for pressure rating over 210 bar.

Function

A to T (High Capacity)

Assembly Model Code*

RDFA-LAN-CJA/M

*Add modifier **/T** to order SG Iron for pressure rating over 210 bar.

Function

B to T (High Capacity)

Assembly Model Code*

RDFA-LAN-CJB/M

*Add modifier **/T** to order SG Iron for pressure rating over 210 bar.

Function

A and B to T (High Capacity)

Assembly Model Code*

RDFA-LAN-CJX

*Add modifier **/S** to order SG Iron for pressure rating over 210 bar.

Function

A to B and B to A
(Cross-port)

Assembly Model Code*

RDDA-LAN-CJY

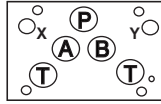
*Add modifier **/S** to order SG Iron for pressure rating over 210 bar.

NOTES: Page 2 for cartridge models RP*C-*** and RD*A-*** show performance curves, technical tips, and options. See page 140 for technical information about sandwich bodies including ISO interface patterns, mounting instructions, studrods, and studkits. Sun ISO 05 X, Y, sandwich bodies are furnished with pilot and drain connections. Seal plates are NOT supplied with these bodies, due to the differences in the European and U.S. seal plates. To order seal plates separately see page 141-142.

Go to www.sunhydraulics.com for more product information.
Model Codes printed in red are Preferred Products and are readily available.

ISO 05 / CETOP 5 WITH X AND Y SEQUENCE VALVES

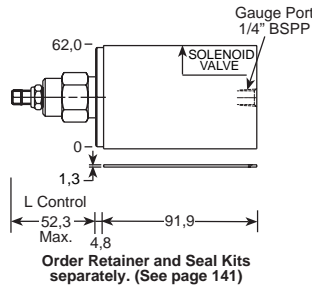
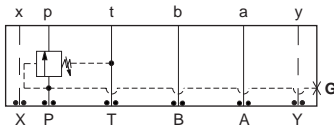
T-2A Cavity



All sandwich bodies shown below are 63,5 mm wide

PILOT OPERATED

DIRECT ACTING



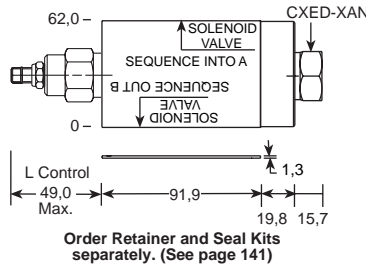
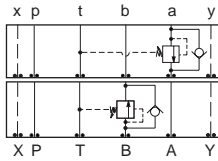
Function
In to **P**

Assembly Model Code*
RSFC-LAN-BJW/M

Assembly Model Code*
SXEA-LAN-BJW/M

*Add modifier **/T** to order SG Iron for pressure rating over 210 bar.

*Add modifier **/T** to order SG Iron for pressure rating over 210 bar.



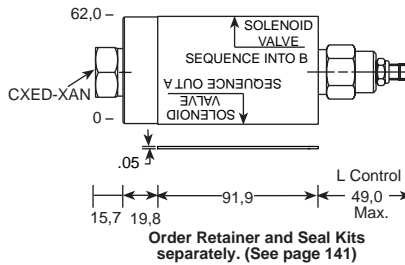
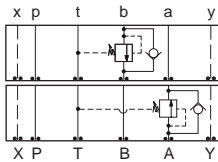
Function
In to **A** (Reverse Free Flow Check)
Out of **B** (Reverse Free Flow Check)

Assembly Model Code*
RSFC-LAN-BJ4

Assembly Model Code*
SXEA-LAN-BJ4

*Add modifier **/S** to order SG Iron for pressure rating over 210 bar.

*Add modifier **/S** to order SG Iron for pressure rating over 210 bar.



Function
In to **B** (Reverse Free Flow Check)
Out of **A** (Reverse Free Flow Check)

Assembly Model Code*
RSFC-LAN-BJ5

Assembly Model Code*
SXEA-LAN-BJ5

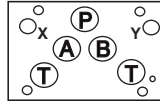
*Add modifier **/S** to order SG Iron for pressure rating over 210 bar.

*Add modifier **/S** to order SG Iron for pressure rating over 210 bar.

NOTES: Page 20 for cartridge models RS*C-*** and SX*A-*** show performance curves, technical tips, and options. See page 140 for technical information about sandwich bodies including ISO interface patterns, mounting instructions, studrods, and studkits. Sun ISO 05 X, Y, sandwich bodies are furnished with pilot and drain connections. Seal plates are NOT supplied with these bodies, due to the differences in the European and U.S. seal plates. To order seal plates separately see page 141-142. Go to www.sunhydraulics.com for more product information.

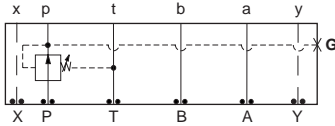
ISO 05 / CETOP 5 WITH X AND Y REDUCING VALVES

T-2A Cavity



All sandwich bodies shown below are 63,5 mm wide

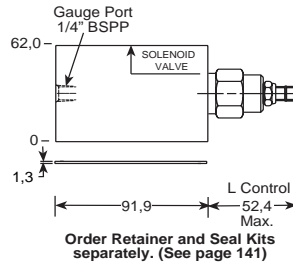
PILOT OPERATED



Assembly Model Code*

PBFB-LAN-BJP/M

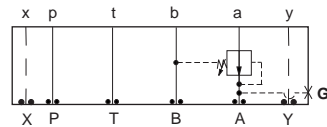
*Add modifier **T** to order SG Iron for pressure rating over 210 bar.



Order Retainer and Seal Kits separately. (See page 141)

Function

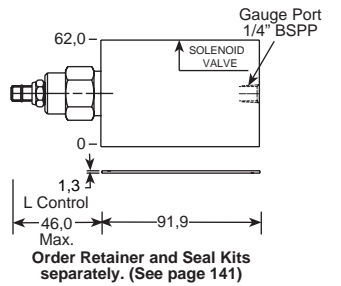
On P Drained to T



Assembly Model Code*

PBFB-LAN-BJA/M

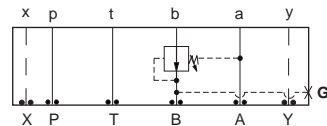
*Add modifier **T** to order SG Iron for pressure rating over 210 bar.



Order Retainer and Seal Kits separately. (See page 141)

Function

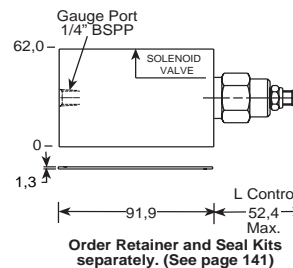
On A Drained to B



Assembly Model Code*

PBFB-LAN-BJB/M

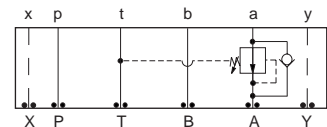
*Add modifier **T** to order SG Iron for pressure rating over 210 bar.



Order Retainer and Seal Kits separately. (See page 141)

Function

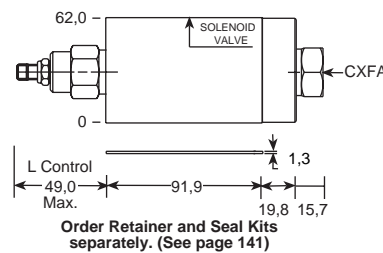
On B Drained to A



Assembly Model Code*

PBFB-LAN-BJ2

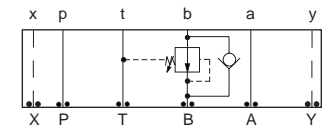
*Add modifier **S** to order SG Iron for pressure rating over 210 bar.



Order Retainer and Seal Kits separately. (See page 141)

Function

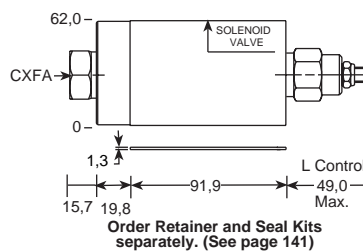
On A Drain to T
(Reverse Free Flow Check)



Assembly Model Code*

PBFB-LAN-BJ3

*Add modifier **S** to order SG Iron for pressure rating over 210 bar.



Order Retainer and Seal Kits separately. (See page 141)

Function

On B Drain to T
(Reverse Free Flow Check)

NOTES: Page 34 for cartridge models PB*B-*** and page 102 for CX*A-*** show performance curves, technical tips, and options.

See page 140 for technical information about sandwich bodies including ISO interface patterns, mounting instructions, studrods, and studkits.

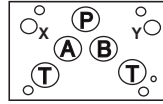
Sun ISO 05 X, Y, sandwich bodies are furnished with pilot and drain connections. Seal plates are NOT supplied with these bodies, due to the differences in the European and U.S. seal plates. To order seal plates separately see page 141-142

Go to www.sunhydraulics.com for more product information.

Model Codes printed in red are Preferred Products and are readily available.

ISO 05 / CETOP 5 WITH X AND Y REDUCING / RELIEVING VALVES

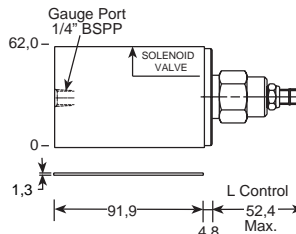
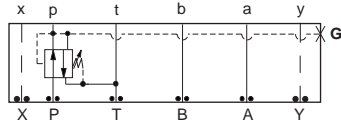
T-2A Cavity



All sandwich bodies shown below are 63,5 mm wide

PILOT OPERATED

DIRECT ACTING



Function

On P Tank to T Drained to T

Assembly Model Code*

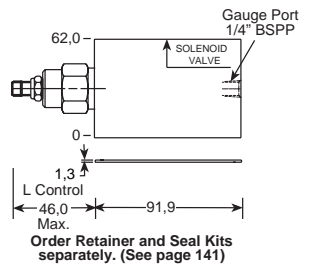
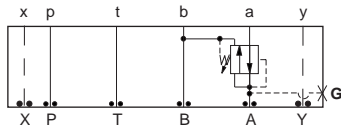
PPFB-LAN-BJP/M

*Add modifier /T to order SG Iron for pressure rating over 210 bar.

Assembly Model Code*

PRFB-LAN-BJP/M

*Add modifier /T to order SG Iron for pressure rating over 210 bar.



Function

On A Tank to B

Assembly Model Code*

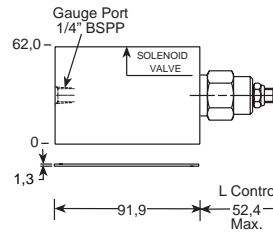
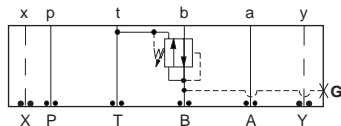
PPFB-LAN-BJA/M

*Add modifier /T to order SG Iron for pressure rating over 210 bar.

Assembly Model Code*

PRFB-LAN-BJA/M

*Add modifier /T to order SG Iron for pressure rating over 210 bar.



Function

On B Tank to A

Assembly Model Code*

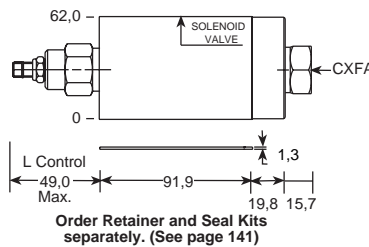
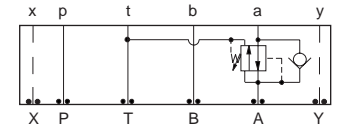
PPFB-LAN-BJB/M

*Add modifier /T to order SG Iron for pressure rating over 210 bar.

Assembly Model Code*

PRFB-LAN-BJB/M

*Add modifier /T to order SG Iron for pressure rating over 210 bar.



Function

On A Tank to T
(Reverse Free Flow Check)

Assembly Model Code*

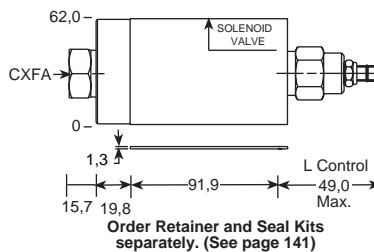
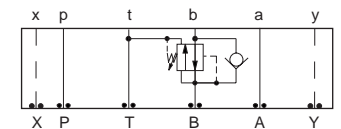
PPFB-LAN-BJ2

*Add modifier /S to order SG Iron for pressure rating over 210 bar.

Assembly Model Code*

PRFB-LAN-BJ2

*Add modifier /S to order SG Iron for pressure rating over 210 bar.



Function

On B Tank to T
(Reverse Free Flow Check)

Assembly Model Code*

PPFB-LAN-BJ3

*Add modifier /S to order SG Iron for pressure rating over 210 bar.

Assembly Model Code*

PRFB-LAN-BJ3

*Add modifier /S to order SG Iron for pressure rating over 210 bar.

NOTES: Page 34 for cartridge models PPFB-*** and PRFB-***, and page 102 for C*FA-*** show performance curves, technical tips, and options.

See page 140 for technical information about sandwich bodies including ISO interface patterns, mounting instructions, studrods, and studkits.

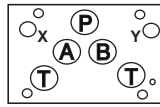
Sun ISO 05 X, Y, sandwich bodies are furnished with pilot and drain connections. Seal plates are NOT supplied with these bodies, due to the differences in the European and U.S. seal plates. To order seal plates separately see page 141-142.

Go to www.sunhydraulics.com for more product information.

Model Codes printed in red are Preferred Products and are readily available.

ISO 05 / CETOP 5 WITH X AND Y COUNTERBALANCE VALVES

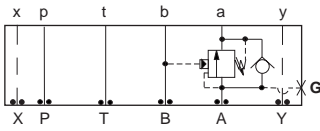
T-2A Cavity



All sandwich bodies shown below are 63,5 mm wide

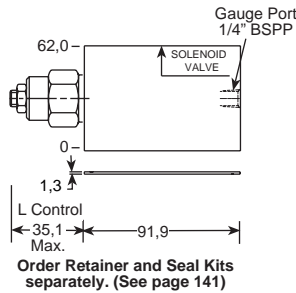
PILOT RATIOS
3:1, 1.5:1 and 2:1

PILOT RATIOS
2.3:1, 4.5:1 and 10:1



Assembly Model Code*
CBE*-LHN-BJA/M

*The 4th digit of the Model Code must be entered to specify counterbalance pilot ratio. Add modifier /T to order SG Iron for pressure rating over 210 bar.



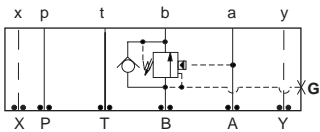
Order Retainer and Seal Kits separately. (See page 141)

Function

On A Pilot from B

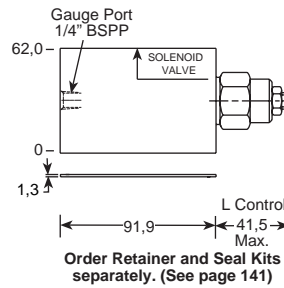
Assembly Model Code*
CBE*-LJN-BJA/M

*Add modifier /T to order SG Iron for pressure rating over 210 bar.



Assembly Model Code*
CBE*-LHN-BJB/M

*The 4th digit of the Model Code must be entered to specify counterbalance pilot ratio. Add modifier /T to order SG Iron for pressure rating over 210 bar.



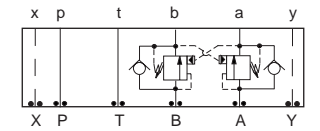
Order Retainer and Seal Kits separately. (See page 141)

Function

On B Pilot from A

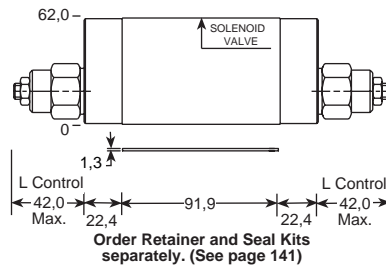
Assembly Model Code*
CBE*-LJN-BJB/M

*Add modifier /T to order SG Iron for pressure rating over 210 bar.



Assembly Model Code*
CBE*-LHN-BJY

*The 4th digit of the Model Code must be entered to specify counterbalance pilot ratio. Add modifier /S to order SG Iron for pressure rating over 210 bar.



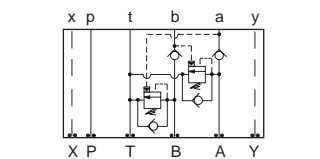
Order Retainer and Seal Kits separately. (See page 141)

Function

On A and B (Cross-Piloted)

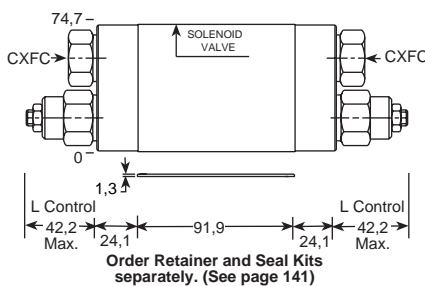
Assembly Model Code*
CBE*-LJN-BJY

*Add modifier /S to order SG Iron for pressure rating over 210 bar.



Assembly Model Code*
CBE*-LHN-BJ8

*The 4th digit of the Model Code must be entered to specify counterbalance pilot ratio. Add modifier /S to order SG Iron for pressure rating over 210 bar.



Order Retainer and Seal Kits separately. (See page 141)

Function

Cushion Lock Circuit
On A and B

Assembly Model Code*
CBE*-LJN-BJ8

*Add modifier /S to order SG Iron for pressure rating over 210 bar.

NOTES: Page 50 for cartridge model CBE*.-*** show performance curves, technical tips, and options.

See page 140 for technical information about sandwich bodies including ISO interface patterns, mounting instructions, studrods, and studkits.

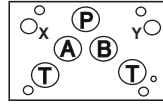
Sun ISO 05 X, Y, sandwich bodies are furnished with pilot and drain connections. Seal plates are NOT supplied with these bodies, due to the differences in the European and U.S. seal plates. To order seal plates separately see page 141-142.

Go to www.sunhydraulics.com for more product information.

Model Codes printed in red are Preferred Products and are readily available.

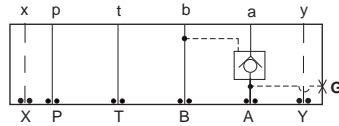
ISO 05 / CETOP 5 WITH X AND Y PILOT-TO-OPEN CHECK VALVES

T-2A Cavity



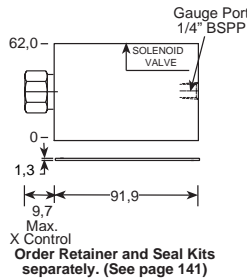
All sandwich bodies shown below are 63,5 mm wide

PILOT OPERATED



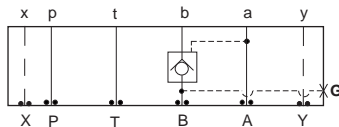
Assembly Model Code*
CKEB-XCN-BJA/M

*Add modifier **T** to order SG Iron for pressure rating over 210 bar.



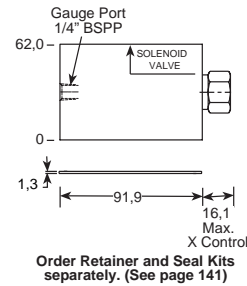
Function

On A Pilot from B



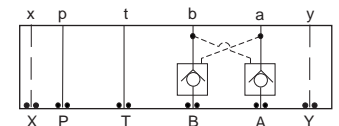
Assembly Model Code*
CKEB-XCN-BJB/M

*Add modifier **T** to order SG Iron for pressure rating over 210 bar.



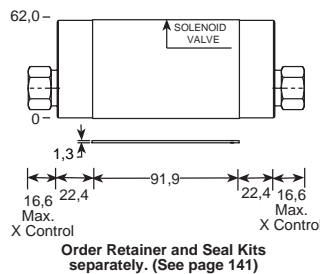
Function

On B Pilot from A



Assembly Model Code*
CKEB-XCN-BJY

*Add modifier **S** to order SG Iron for pressure rating over 210 bar.



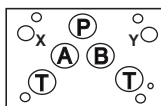
Function

On A and B (Cross-Piloted)

NOTES: Page 78 for cartridge models CK**-*** show performance curves, technical tips, and options.
See page 140 for technical information about sandwich bodies including ISO interface patterns, mounting instructions, studrods, and studkits.
Sun ISO 05 X, Y, sandwich bodies are furnished with pilot and drain connections. Seal plates are NOT supplied with these bodies, due to the differences in the European and U.S. seal plates. To order seal plates separately see page 141-142.
Go to www.sunhydraulics.com for more product information.
Model Codes printed in red are Preferred Products and are readily available.

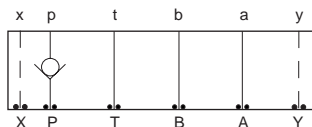
ISO 05 / CETOP 5 WITH X AND Y CHECK VALVES

T-5A Cavity



All sandwich bodies shown below are 63,5 mm wide

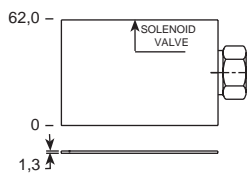
CHECK VALVES



Assembly Model Code*

CXFA-XCN-DJP

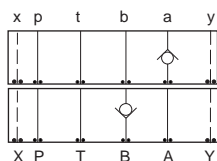
*Add modifier /S to order SG Iron for pressure rating over 210 bar.



Order Retainer and Seal Kits separately. (See page 141)

Function

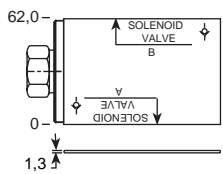
On P



Assembly Model Code*

CXFA-XCN-DJK

*Add modifier /S to order SG Iron for pressure rating over 210 bar.

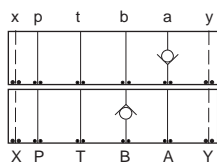


Order Retainer and Seal Kits separately. (See page 141)

Function

On A Free Flow Out of Valve

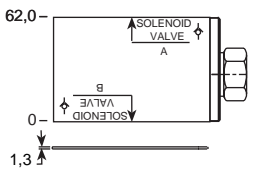
On B Free Flow Into Valve



Assembly Model Code*

CXFA-XCN-DJJ

*Add modifier /S to order SG Iron for pressure rating over 210 bar.

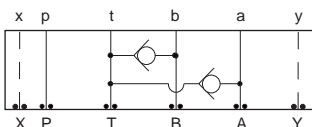


Order Retainer and Seal Kits separately. (See page 141)

Function

On A Free Flow Into Valve

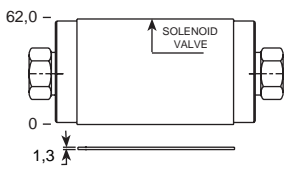
On B Free Flow Out of Valve



Assembly Model Code*

CXFA-XAN-DJW

*Add modifier /S to order SG Iron for pressure rating over 210 bar.



Order Retainer and Seal Kits separately. (See page 141)

Function

T to A and B

NOTES: Page 102 for cartridge models CX*A-*** show performance curves, technical tips, and options.

See page 140 for technical information about sandwich bodies including ISO interface patterns, mounting instructions, studrods, and studkits.

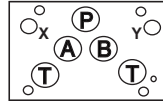
Sun ISO 05 X, Y, sandwich bodies are furnished with pilot and drain connections. Seal plates are NOT supplied with these bodies, due to the differences in the European and U.S. seal plates. To order seal plates separately see page 141-142.

Go to www.sunhydraulics.com for more product information.

Model Codes printed in red are Preferred Products and are readily available.

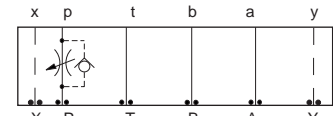
ISO 05 / CETOP 5 WITH X AND Y FLOW CONTROL VALVES

T-5A Cavity



All sandwich bodies shown below are 63,5 mm wide

FULLY ADJUSTABLE NEEDLE



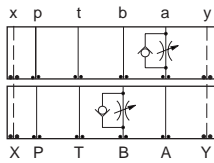
Note: Free Flow Check with Model FDCB Only

Assembly Model Code*

NFDC-LAN-DJP

*Add modifier /S to order SG Iron for pressure rating over 210 bar.

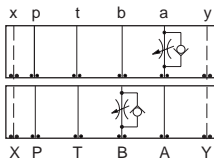
FULLY ADJUSTABLE NEEDLE WITH FREE FLOW CHECK



Assembly Model Code*

NCEB-LCN-DJA

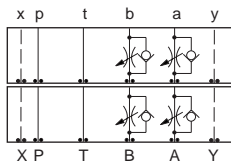
*Add modifier /S to order SG Iron for pressure rating over 210 bar.



Assembly Model Code*

NCEB-LCN-DJB

*Add modifier /S to order SG Iron for pressure rating over 210 bar.

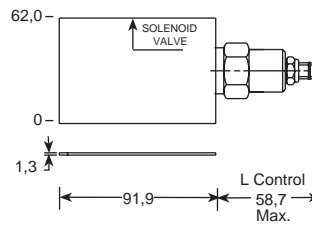


Assembly Model Code*

NCEB-LCN-DJP

*Add modifier /S to order SG Iron for pressure rating over 210 bar.

FULLY ADJUSTABLE PRESSURE COMPENSATED WITH FREE FLOW CHECK



Order Retainer and Seal Kits separately. (See page 141)

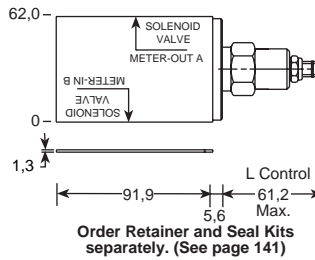
Function

Meter-In P

Assembly Model Code*

FDCB-LAN-DJP

*Add modifier /S to order SG Iron for pressure rating over 210 bar.



Order Retainer and Seal Kits separately. (See page 141)

Function

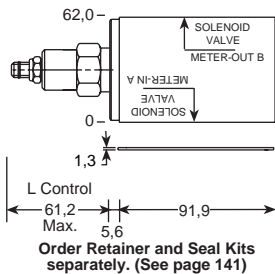
Meter-Out A

Meter-In B

Assembly Model Code*

FDCB-LAN-DJA

*Add modifier /S to order SG Iron for pressure rating over 210 bar.



Order Retainer and Seal Kits separately. (See page 141)

Function

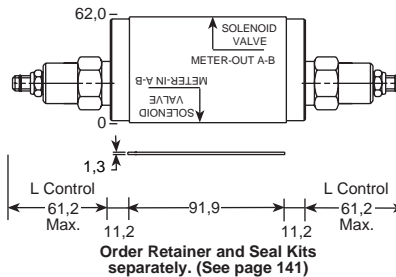
Meter-In A

Meter-Out B

Assembly Model Code*

FDCB-LAN-DJB

*Add modifier /S to order SG Iron for pressure rating over 210 bar.



Order Retainer and Seal Kits separately. (See page 141)

Function

Meter-In A and B

Meter-Out A and B

Assembly Model Code*

FDCB-LAN-DJP

*Add modifier /S to order SG Iron for pressure rating over 210 bar.

NOTES: Page 110 for cartridge models NF*C-*** and NC*B-***, and page 126 for FD**.* show performance curves, technical tips, and options. See page 140 for technical information about sandwich bodies including ISO interface patterns, mounting instructions, studrods, and studkits.

Sun ISO 05 X, Y, sandwich bodies are furnished with pilot and drain connections. Seal plates are NOT supplied with these bodies, due to the differences in the European and U.S. seal plates. To order seal plates separately see page 141-142.

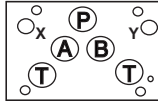
Go to www.sunhydraulics.com for more product information.

Model Codes printed in red are Preferred Products and are readily available.

Sandwich Assemblies

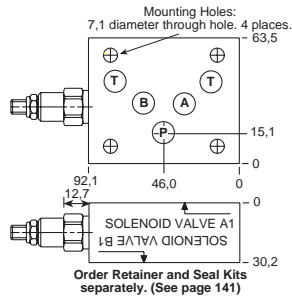
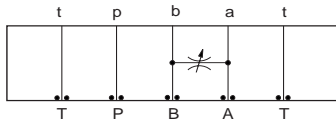
ISO 05 / CETOP 5 WITH X AND Y FLOW CONTROL VALVES

T-13A Cavity



FULLY ADJUSTABLE NEEDLE

Function



Meter A to B and B to A

Assembly Model Code*
NFCC-LCN-DJS

*Add modifier /S to order SG Iron for pressure rating over 210 bar.

NOTES: Page 110 for cartridge model NF*C-*** show performance curves, technical tips, and options.
See page 140 for technical information about sandwich bodies including ISO interface patterns, mounting instructions, studrods, and studkits.
Sun ISO 05 X, Y, sandwich bodies are furnished with pilot and drain connections. Seal plates are NOT supplied with these bodies, due to the differences in the European and U.S. seal plates. To order seal plates separately see page 141-142.
Go to www.sunhydraulics.com for more product information.