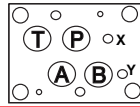


**ISO 07 / CETOP 7 RELIEF VALVES
(SIDE PORTED SUBPLATE / SIDE PORTED SUBPLATE WITH GASKET MOUNTED TANK PORT)**

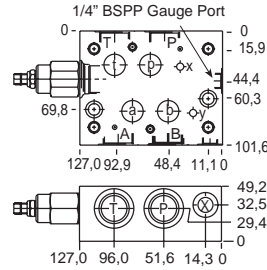
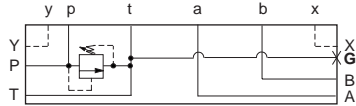
T-3A Cavity



All subplates shown below are 127,0 mm wide

PILOT OPERATED

DIRECT ACTING



Function

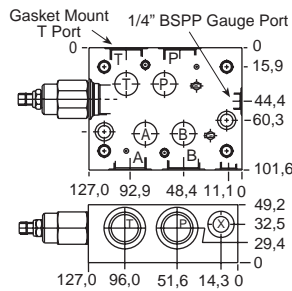
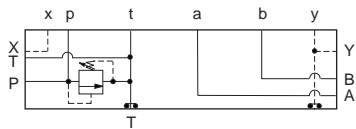
P to T

Ports A, B, P, T	Ports X, Y	Assembly Model Code*
3/4" BSPP	1/4" BSPP	RPGC-LAN-ZLZ

*Add modifier /S to order SG Iron for pressure rating over 210 bar.

Ports A, B, P, T	Ports X, Y	Assembly Model Code*
3/4" BSPP	1/4" BSPP	RDFA-LAN-ZLZ

*Add modifier /S to order SG Iron for pressure rating over 210 bar.



Function

P to T

Ports A, B, P, T	Ports X, Y	Assembly Model Code*
3/4" BSPP	1/4" BSPP	RPGC-LAN-VTG

*Add modifier /S to order SG Iron for pressure rating over 210 bar.

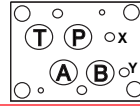
Ports A, B, P, T	Ports X, Y	Assembly Model Code*
3/4" BSPP	1/4" BSPP	RDFA-LAN-VTG

*Add modifier /S to order SG Iron for pressure rating over 210 bar.

NOTES: Page 2 for cartridge models RP*C-*** and RD*A-*** show performance curves, technical tips, and options.
See page 140 for technical information about sandwich bodies including ISO interface patterns, mounting instructions, studrods, and studkits.
Go to www.sunhydraulics.com/ for more product information.
Model Codes printed in red are Preferred Products and are readily available.

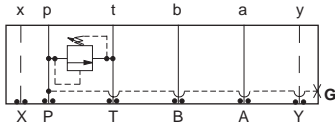
ISO 07 / CETOP 7 RELIEF VALVES

T-3A / T-10A Cavities



All sandwich bodies shown below are 89,0 mm wide

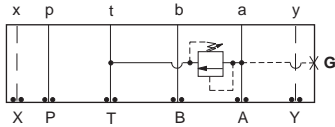
PILOT OPERATED



Assembly Model Code*

RPGC-LAN-CKP/M

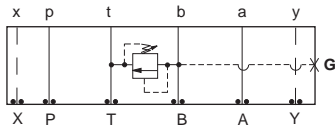
*Add modifier **/T** to order SG Iron for pressure rating over 210 bar.



Assembly Model Code*

RPGC-LAN-CKA/M

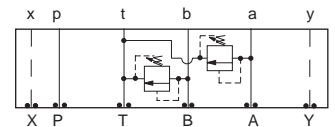
*Add modifier **/T** to order SG Iron for pressure rating over 210 bar.



Assembly Model Code*

RPGC-LAN-CKB/M

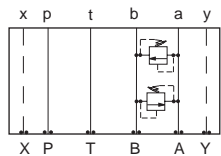
*Add modifier **/T** to order SG Iron for pressure rating over 210 bar.



Assembly Model Code*

RPGC-LAN-CKX

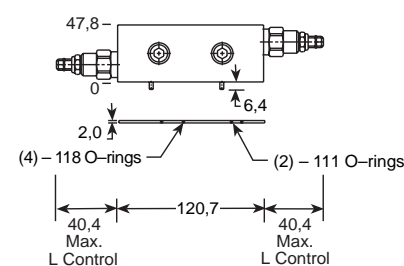
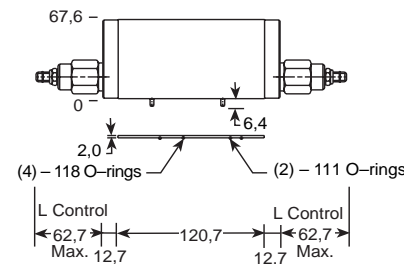
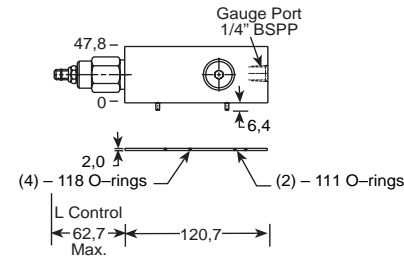
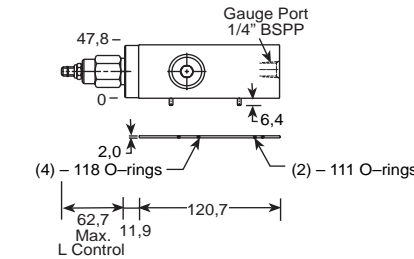
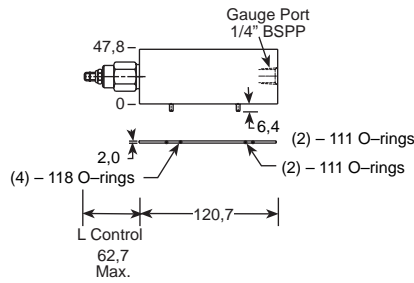
*Add modifier **/S** to order SG Iron for pressure rating over 210 bar.



Assembly Model Code*

RPEC-LAN-CKY

*Add modifier **/S** to order SG Iron for pressure rating over 210 bar.



DIRECT ACTING

Function

P to T

Assembly Model Code*

RDFA-LAN-CKP/M

*Add modifier **/T** to order SG Iron for pressure rating over 210 bar.

Function

A to T

Assembly Model Code*

RDFA-LAN-CKA/M

*Add modifier **/T** to order SG Iron for pressure rating over 210 bar.

Function

B to T

Assembly Model Code*

RDFA-LAN-CKB/M

*Add modifier **/T** to order SG Iron for pressure rating over 210 bar.

Function

A and B to T (High Capacity)

Assembly Model Code*

RDFA-LAN-CKX

*Add modifier **/S** to order SG Iron for pressure rating over 210 bar.

Function

A to B and B to A (Cross-port)

Assembly Model Code*

RDDA-LAN-CKY

*Add modifier **/S** to order SG Iron for pressure rating over 210 bar.

NOTES: Page 2 for cartridge models RP*C-*** and RD*A-*** show performance curves, technical tips, and options.

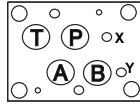
See page 140 for technical information about sandwich bodies including ISO interface patterns, mounting instructions, studrods, and studkits.

Go to www.sunhydraulics.com for more product information.

Model Codes printed in red are Preferred Products and are readily available.

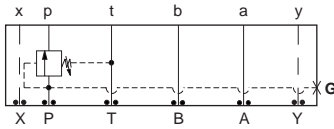
ISO 07 / CETOP 7 SEQUENCE VALVES

T-17A Cavity



All sandwich bodies shown below are 89,0 mm wide

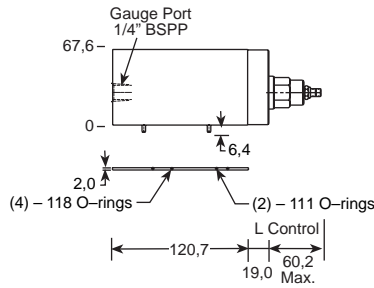
PILOT OPERATED



Assembly Model Code*

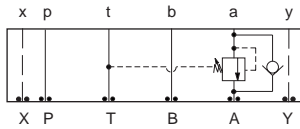
RSHC-LAN-BKW/M

*Add modifier /T to order SG Iron for pressure rating over 210 bar.



Function

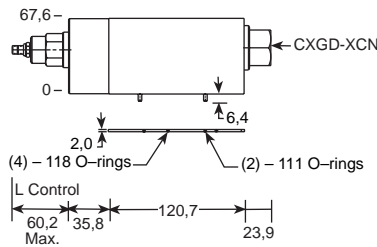
In to P



Assembly Model Code*

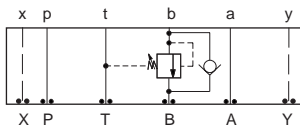
RSHC-LAN-BK4

*Add modifier /S to order SG Iron for pressure rating over 210 bar.



Function

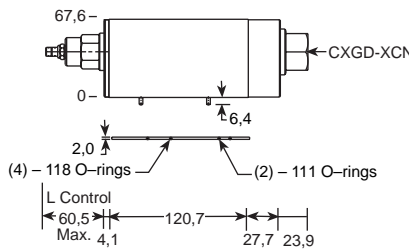
In to A (Reverse Free Flow Check)



Assembly Model Code*

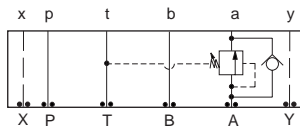
RSHC-LAN-BK5

*Add modifier /S to order SG Iron for pressure rating over 210 bar.



Function

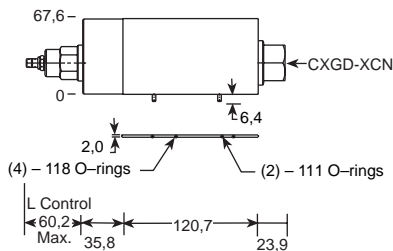
In to B (Reverse Free Flow Check)



Assembly Model Code*

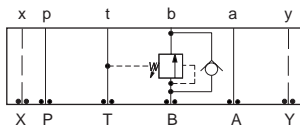
RSHC-LAN-BK6

*Add modifier /S to order SG Iron for pressure rating over 210 bar.



Function

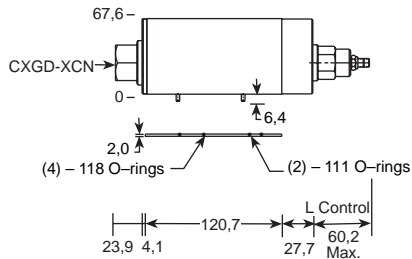
Out of A (Reverse Free Flow Check)



Assembly Model Code*

RSHC-LAN-BK7

*Add modifier /S to order SG Iron for pressure rating over 210 bar.



Function

Out of B (Reverse Free Flow Check)

NOTES: Page 20 for cartridge model RS*C-*** show performance curves, technical tips, and options.

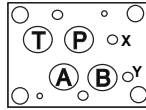
See page 140 for technical information about sandwich bodies including ISO interface patterns, mounting instructions, studrods, and studkits.

Go to www.sunhydraulics.com for more product information.

Model Codes printed in red are Preferred Products and are readily available.

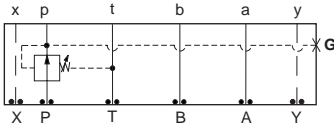
ISO 07 / CETOP 7 REDUCING VALVES

T-17A Cavity



All sandwich bodies shown below are 89,0 mm wide

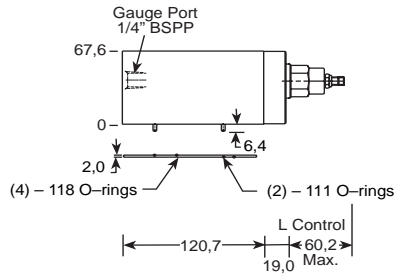
PILOT OPERATED



Assembly Model Code*

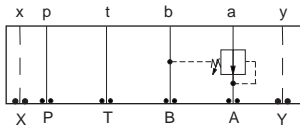
PBHB-LAN-BKP/M

*Add modifier **/T** to order SG Iron for pressure rating over 210 bar.



Function

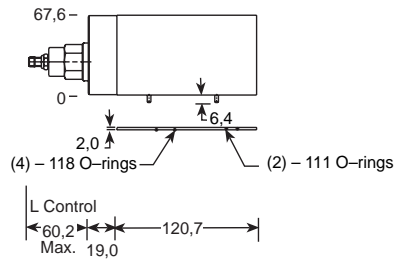
On **P** Drained to **T**



Assembly Model Code*

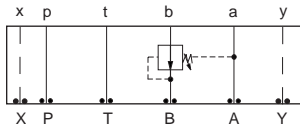
PBHB-LAN-BKA

*Add modifier **/S** to order SG Iron for pressure rating over 210 bar.



Function

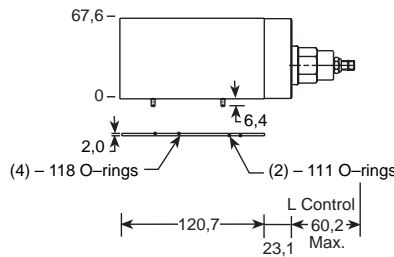
On **A** Drained to **B**



Assembly Model Code*

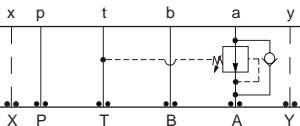
PBHB-LAN-BKB

*Add modifier **/S** to order SG Iron for pressure rating over 210 bar.



Function

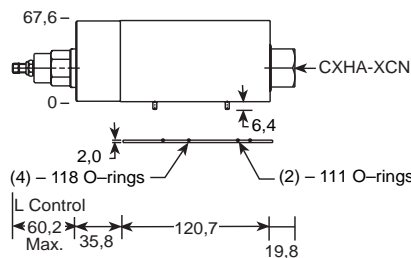
On **B** Drained to **A**



Assembly Model Code*

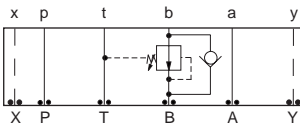
PBHB-LAN-BK2

*Add modifier **/S** to order SG Iron for pressure rating over 210 bar.



Function

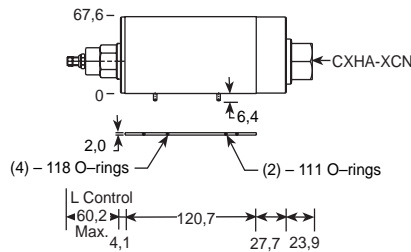
On **A** Drain to **T**
(Reverse Free Flow Check)



Assembly Model Code*

PBHB-LAN-BKJ

*Add modifier **/S** to order SG Iron for pressure rating over 210 bar.



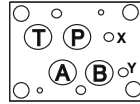
Function

On **B** Drain to **T**
(Reverse Free Flow Check)

NOTES: Page 34 for cartridge model PB*B-*** and page 102 for CX*A-*** shows performance curves, technical tips, and options. See page 140 for technical information about sandwich bodies including ISO interface patterns, mounting instructions, studrods, and studkits. Go to www.sunhydraulics.com for more product information. Model Codes printed in red are Preferred Products and are readily available.

ISO 07 / CETOP 7 REDUCING / RELIEF VALVES

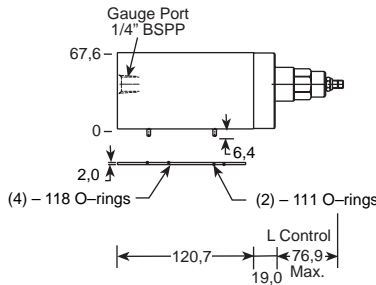
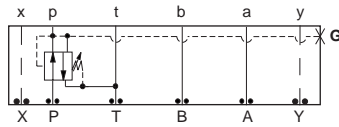
T-17A Cavity



All sandwich bodies shown below are 89,0 mm wide

PILOT OPERATED

DIRECT ACTING



Function

On P Tank to T Drained to T

Assembly Model Code*

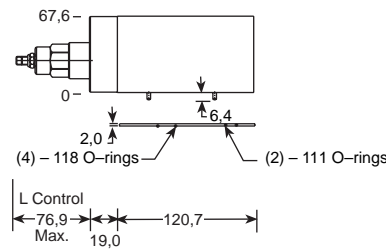
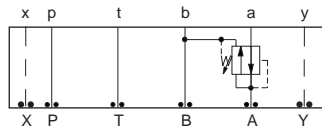
PPHB-LAN-BKP/M

*Add modifier /T to order SG Iron for pressure rating over 210 bar.

Assembly Model Code*

PRHB-LAN-BKP/M

*Add modifier /T to order SG Iron for pressure rating over 210 bar.



Function

On A Tank to B Drained to B

Assembly Model Code*

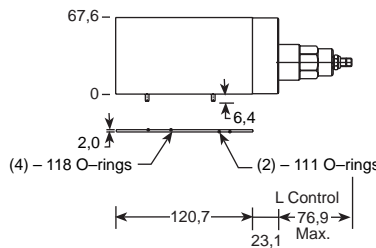
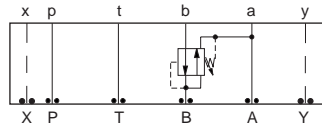
PPHB-LAN-BKA

*Add modifier /S to order SG Iron for pressure rating over 210 bar.

Assembly Model Code*

PRHB-LAN-BKA

*Add modifier /S to order SG Iron for pressure rating over 210 bar.



Function

On B Tank to A Drained to A

Assembly Model Code*

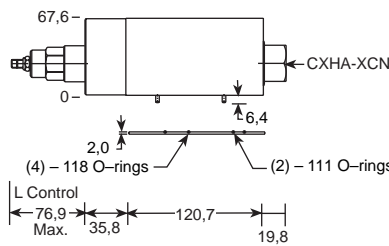
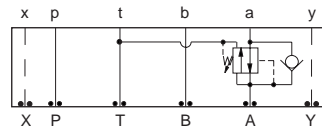
PPHB-LAN-BKB

*Add modifier /S to order SG Iron for pressure rating over 210 bar.

Assembly Model Code*

PRHB-LAN-BKB

*Add modifier /S to order SG Iron for pressure rating over 210 bar.



Function

On A Tank to T Drained to T (Reverse Free Flow Check)

Assembly Model Code*

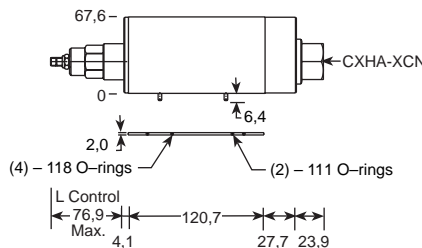
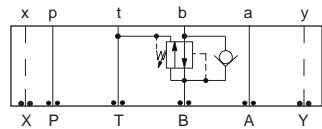
PPHB-LAN-BK2

*Add modifier /S to order SG Iron for pressure rating over 210 bar.

Assembly Model Code*

PRHB-LAN-BK2

*Add modifier /S to order SG Iron for pressure rating over 210 bar.



Function

On B Tank to T Drained to T (Reverse Free Flow Check)

Assembly Model Code*

PPHB-LAN-BKJ

*Add modifier /S to order SG Iron for pressure rating over 210 bar.

Assembly Model Code*

PRHB-LAN-BKJ

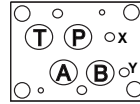
*Add modifier /S to order SG Iron for pressure rating over 210 bar.

NOTES: Page 42 for cartridge models PP*B-*** and PR*B-***, and page 102 for CX*A-*** show performance curves, technical tips, and options. See page 140 for technical information about sandwich bodies including ISO interface patterns, mounting instructions, studrods, and studkits. Go to www.sunhydraulics.com for more product information.

Model Codes printed in red are Preferred Products and are readily available.

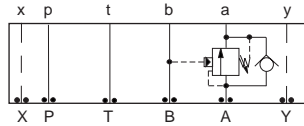
ISO 07 / CETOP 7 COUNTERBALANCE VALVES

T-17A Cavity



All sandwich bodies shown below are 89,0 mm wide

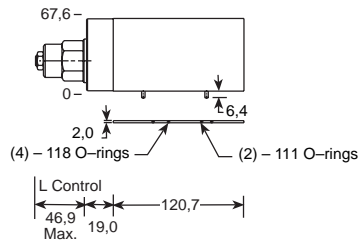
PILOT RATIOS
3:1, 2:1 and 1.5:1



Assembly
Model Code*

CBG*-LHN-BKA

*Add modifier /S to order SG Iron for pressure rating over 210 bar.



PILOT RATIOS
2.3:1, 4.5:1 and 10:1

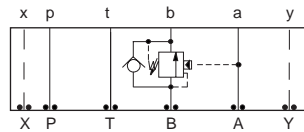
Function

On A Pilot from B

Assembly
Model Code*

CBG*-LJN-BKA

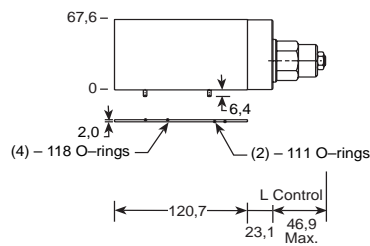
*Add modifier /S to order SG Iron for pressure rating over 210 bar.



Assembly
Model Code*

CBG*-LHN-BKB

*Add modifier /S to order SG Iron for pressure rating over 210 bar.



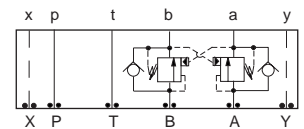
Function

On B Pilot from A

Assembly
Model Code*

CBG*-LJN-BKB

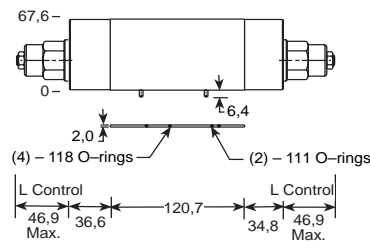
*Add modifier /S to order SG Iron for pressure rating over 210 bar.



Assembly
Model Code*

CBG*-LHN-BKY

*Add modifier /S to order SG Iron for pressure rating over 210 bar.



Function

On A and B (Cross-piloted)

Assembly
Model Code*

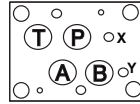
CBG*-LJN-BKY

*Add modifier /S to order SG Iron for pressure rating over 210 bar.

NOTES: Page 50 for cartridge model CB**-* show performance curves, technical tips, and options.
See page 140 for technical information about sandwich bodies including ISO interface patterns, mounting instructions, studrods, and studkits.
Go to www.sunhydraulics.com for more product information.
Model Codes printed in red are Preferred Products and are readily available.

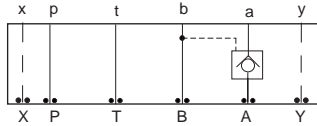
ISO 07 / CETOP 7 PILOT-TO-OPEN CHECK VALVES

T-17A Cavity



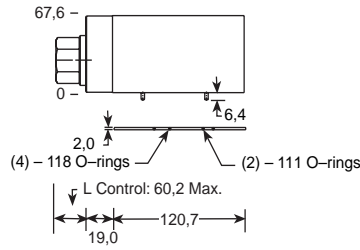
All sandwich bodies shown below are 89,0 mm wide

PILOT OPERATED



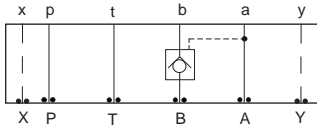
Assembly Model Code*
CKGB-XCN-BKA

*Add modifier /S to order SG Iron for pressure rating over 210 bar.



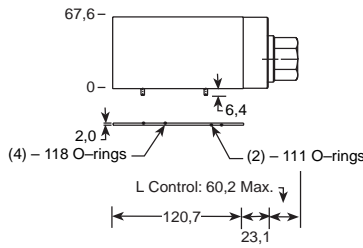
Function

On A Pilot from B



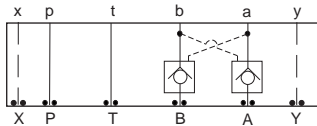
Assembly Model Code*
CKGB-XCN-BKB

*Add modifier /S to order SG Iron for pressure rating over 210 bar.



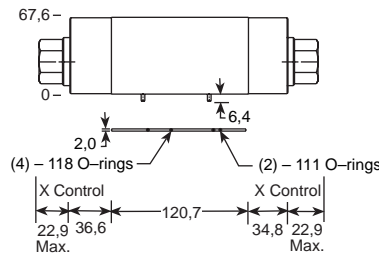
Function

On B Pilot from A



Assembly Model Code*
CKGB-XCN-BKY

*Add modifier /S to order SG Iron for pressure rating over 210 bar.



Function

On A and B (Cross-piloted)

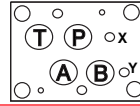
NOTES: Page 78 for cartridge model CK**.* show performance curves, technical tips, and options.
See page 140 for technical information about sandwich bodies including ISO interface patterns, mounting instructions, studrods, and studkits.
Go to www.sunhydraulics.com for more product information.
Model Codes printed in red are Preferred Products and are readily available.

Sandwich Assemblies

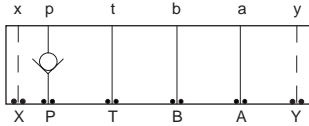
ISO 07 / CETOP 7 CHECK VALVES

T-5A/T-16A Cavity

All sandwich bodies shown below are 89,0 mm wide



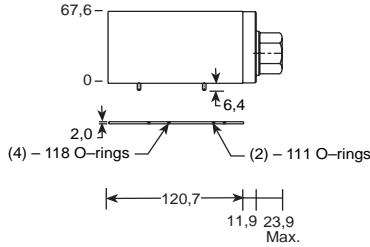
CHECK VALVE



Assembly Model Code*

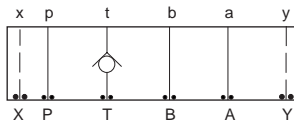
CXHA-XCN-DKP

*Add modifier /S to order SG Iron for pressure rating over 210 bar.



Function

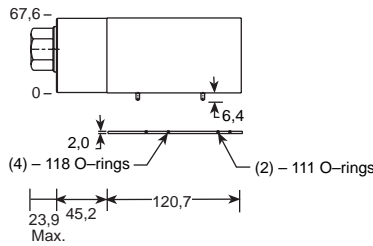
On P



Assembly Model Code*

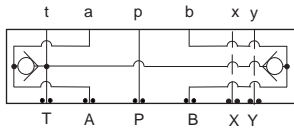
CXHA-XCN-DKT

*Add modifier /S to order SG Iron for pressure rating over 210 bar.



Function

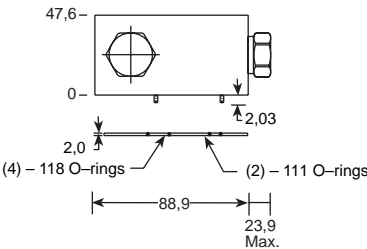
On T Free Flow Out of Valve



Assembly Model Code*

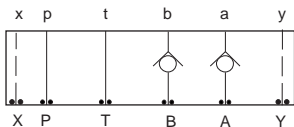
CXFA-XAN-DKX

*Add modifier /S to order SG Iron for pressure rating over 210 bar.



Function

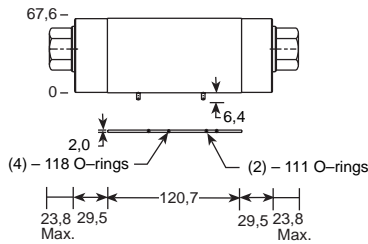
T to A and B



Assembly Model Code*

CXHA-XCN-DKZ

*Add modifier /S to order SG Iron for pressure rating over 210 bar.



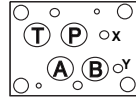
Function

On A and B, Free Flow Out of Valve

NOTES: Page 102 for cartridge models CX*A-*** show performance curves, technical tips, and options. See page 140 for technical information about sandwich bodies including ISO interface patterns, mounting instructions, studrods, and studkits. Go to www.sunhydraulics.com for more product information. Model Codes printed in red are Preferred Products and are readily available.

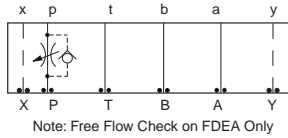
ISO 07 / CETOP 7 FLOW CONTROL VALVES

T-16A Cavity



All sandwich bodies shown below are 89,0 mm wide

FULLY ADJUSTABLE NEEDLE

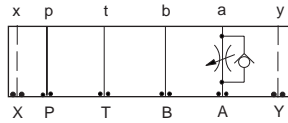


Note: Free Flow Check on FDEA Only

Assembly Model Code*
NFEC-LEN-DKP

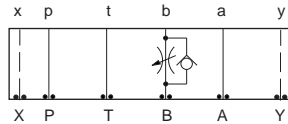
*Add modifier /S to order SG Iron for pressure rating over 210 bar.

FULLY ADJUSTABLE NEEDLE WITH FREE FLOW CHECK



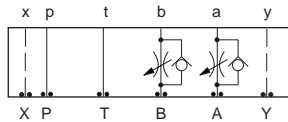
Assembly Model Code*
NCFB-L*N-DKA

*Add modifier /S to order SG Iron for pressure rating over 210 bar.



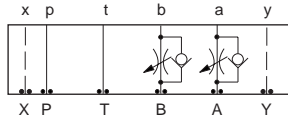
Assembly Model Code*
NCFB-L*N-DKB

*Add modifier /S to order SG Iron for pressure rating over 210 bar.



Assembly Model Code*
NCFB-L*N-DKY

*Add modifier /S to order SG Iron for pressure rating over 210 bar.

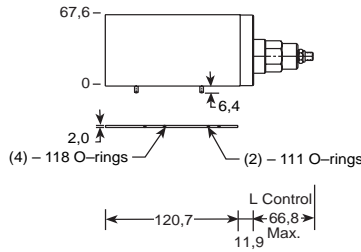


Assembly Model Code*
NCFB-L*N-DKZ

*Add modifier /S to order SG Iron for pressure rating over 210 bar.

FULLY ADJUSTABLE PRESSURE COMPENSATED WITH FREE FLOW CHECK

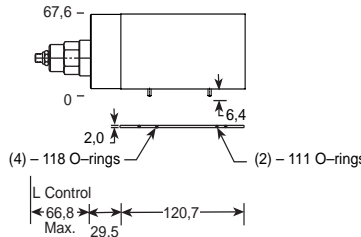
Function
Meter-In P



Assembly Model Code*
FDEA-LAN-DKP

*Add modifier /S to order SG Iron for pressure rating over 210 bar.

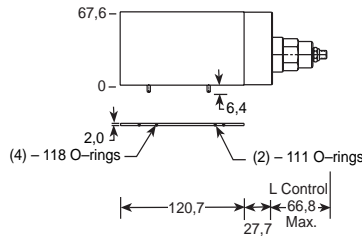
Function
Meter-Out A



Assembly Model Code*
FDEA-LAN-DKA

*Add modifier /S to order SG Iron for pressure rating over 210 bar.

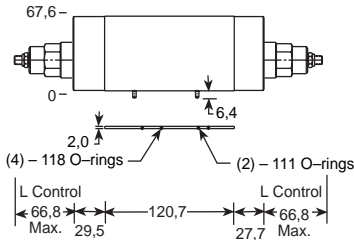
Function
Meter-Out B



Assembly Model Code*
FDEA-LAN-DKB

*Add modifier /S to order SG Iron for pressure rating over 210 bar.

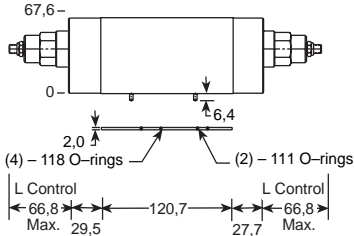
Function
Meter-Out A and B



Assembly Model Code*
FDEA-LAN-DKY

*Add modifier /S to order SG Iron for pressure rating over 210 bar.

Function
Meter-In A and B



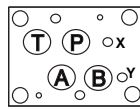
Assembly Model Code*
FDEA-LAN-DKZ

*Add modifier /S to order SG Iron for pressure rating over 210 bar.

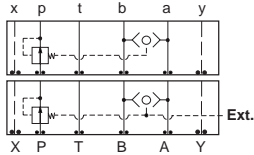
NOTES: Page 110 for cartridge models NF*C-*** and NC*B-***, and page 126 for FD*A show performance curves, technical tips, and options. See page 140 for technical information about sandwich bodies including ISO interface patterns, mounting instructions, studrods, and studkits. Go to www.sunhydraulics.com for more product information. Model Codes printed in red are Preferred Products and are readily available.

ISO 07 / CETOP 7 CIRCUIT SAVER VALVES (PRESSURE COMPENSATOR / REGENERATIVE)

T-13A Cavity/T-17A Cavity

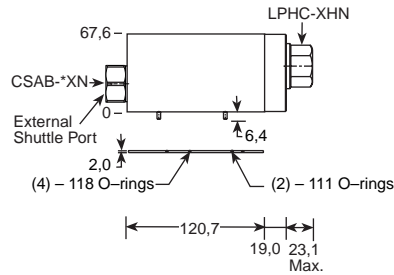


All sandwich bodies shown below are 89,0 mm wide



External Shuttle Port	Assembly Model Code*
None	YFFE-XHN-AB
1/4 BSPP	YFFF-XHN-AB/M

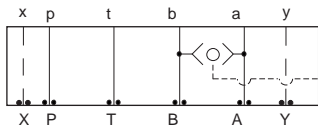
*Add modifier **/T** to order SG Iron for pressure rating over 210 bar. Add modifier **/S** to order SG Iron for YFFE.



Function

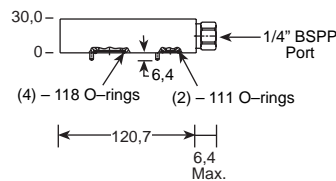
YFFE: Pressure Compensator (Restrictive)

YFFF: With Load Sensing Pressure Compensator (Restrictive)



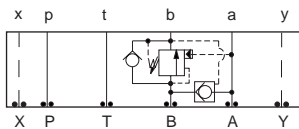
Assembly Model Code*
CSAA-BXN-DKS

*Add modifier **/S** to order SG Iron for pressure rating over 210 bar.



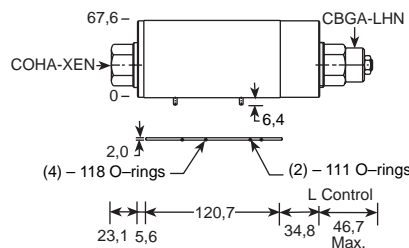
Function

Shuttle A and B (Output External)



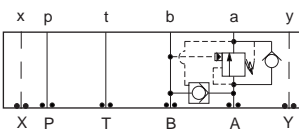
Assembly Model Code*
YDFG-LHN-AB

*Add modifier **/S** to order SG Iron for pressure rating over 210 bar.



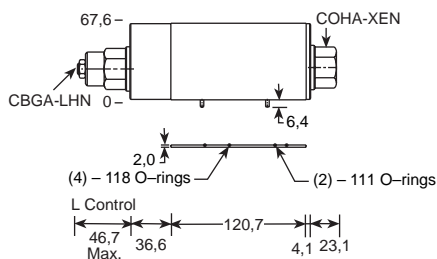
Function

B to A Regenerative



Assembly Model Code*
YDFE-LHN-AB

*Add modifier **/S** to order SG Iron for pressure rating over 210 bar.



Function

A to B Regenerative

NOTES: Page 50 for cartridge model CB*A-*** shows performance curves, technical tips, and options.
See page 140 for technical information about sandwich bodies including ISO interface patterns, mounting instructions, studrods, and studkits.
Go to www.sunhydraulics.com for more product information.