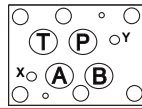


**ISO 08 / CETOP 8 RELIEF VALVES**  
**(SIDE PORTED SUBPLATE / REAR PORTED SUBPLATE / SIDE PORTED SUBPLATE WITH GASKET MOUNTED TANK PORT)**

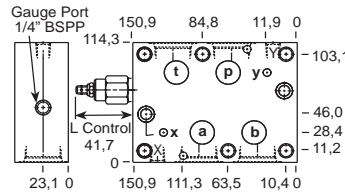
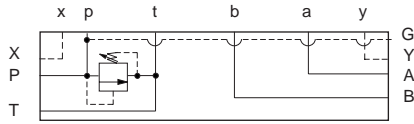
**T-3A Cavity**



All subplates shown below are 150,9 mm wide

**PILOT OPERATED**

**DIRECT ACTING**



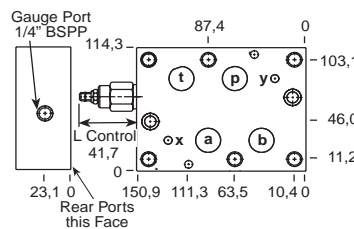
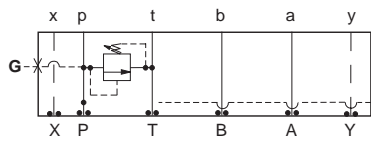
**Function**  
**P to T (Side Ports)**

Ports A, B, P, T	Ports X, Y	Assembly Model Code*
1" BSPP	1/4" BSPP	<b>RPGC-LAN-CSX</b>

Ports A, B, P, T	Ports X, Y	Assembly Model Code*
1" BSPP	1/4" BSPP	<b>RDFA-LAN-CSX</b>

\*Add modifier /S to order SG Iron for pressure rating over 210 bar.

\*Add modifier /S to order SG Iron for pressure rating over 210 bar.



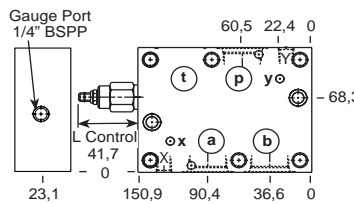
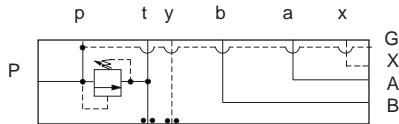
**Function**  
**P to T (Rear Ports)**

Ports A, B, P, T	Ports X, Y	Assembly Model Code*
1" BSPP	1/4" BSPP	<b>RPGC-LAN-CRX</b>

Ports A, B, P, T	Ports X, Y	Assembly Model Code*
1" BSPP	1/4" BSPP	<b>RDFA-LAN-CRX</b>

\*Add modifier /S to order SG Iron for pressure rating over 210 bar.

\*Add modifier /S to order SG Iron for pressure rating over 210 bar.



**Function**  
**P to T**  
**(Gasket Mounted T and Y Port, other Ports on side)**

Ports A, B, P	Ports X, Y	Assembly Model Code*
1" BSPP	1/4" BSPP	<b>RPGC-LAN-CTS</b>

Ports A, B, P, T	Ports X, Y	Assembly Model Code*
1" BSPP	1/4" BSPP	<b>RDFA-LAN-CTS</b>

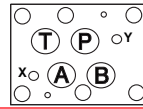
\*Add modifier /S to order SG Iron for pressure rating over 210 bar.

\*Add modifier /S to order SG Iron for pressure rating over 210 bar.

NOTES: Page 2 for cartridge models RP\*C-\*\*\* and RD\*A-\*\*\* show performance curves, technical tips, and options.  
 See page 140 for technical information about sandwich bodies including ISO interface patterns, mounting instructions, studrods, and studkits.  
 Go to [www.sunhydraulics.com](http://www.sunhydraulics.com) for more product information.  
 Model Codes printed in red are Preferred Products and are readily available.

ISO 08 / CETOP 8 RELIEF VALVES

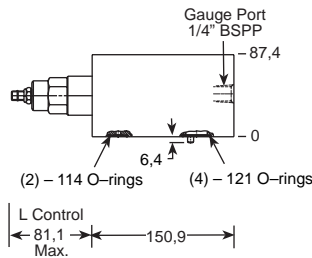
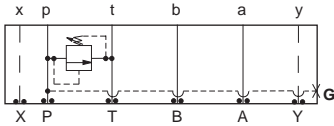
T-16A Cavity



All sandwich bodies shown below are 114,3 mm wide

PILOT OPERATED

DIRECT ACTING



Function

P to T (High Capacity)

Assembly Model Code\*

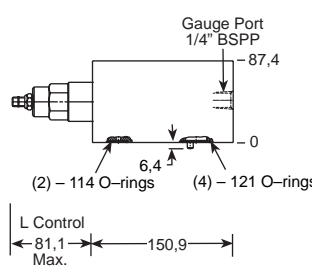
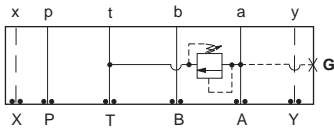
**RPIC-LAN-CDO/M**

\*Add modifier **/T** to order SG Iron for pressure rating over 210 bar.

Assembly Model Code\*

**RDHA-LAN-CDO/M**

\*Add modifier **/T** to order SG Iron for pressure rating over 210 bar.



Function

A to T (High Capacity)

Assembly Model Code\*

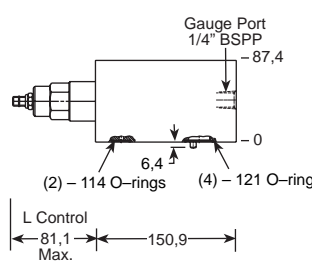
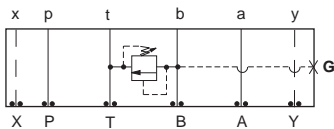
**RPIC-LAN-CDC/M**

\*Add modifier **/T** to order SG Iron for pressure rating over 210 bar.

Assembly Model Code\*

**RDHA-LAN-CDC/M**

\*Add modifier **/T** to order SG Iron for pressure rating over 210 bar.



Function

B to T (High Capacity)

Assembly Model Code\*

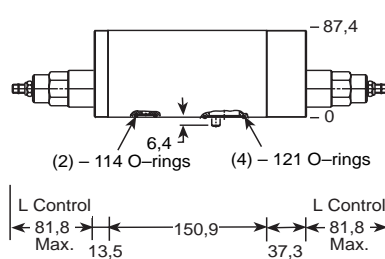
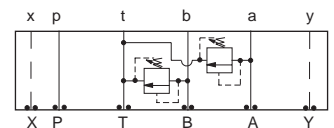
**RPIC-LAN-CDD/M**

\*Add modifier **/T** to order SG Iron for pressure rating over 210 bar.

Assembly Model Code\*

**RDHA-LAN-CDD/M**

\*Add modifier **/T** to order SG Iron for pressure rating over 210 bar.



Function

A and B to T (High Capacity)

Assembly Model Code\*

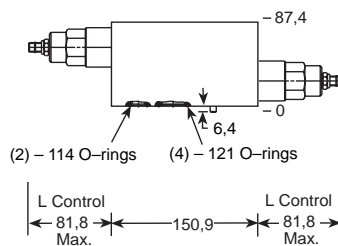
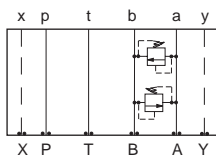
**RPIC-LAN-CDZ**

\*Add modifier **/S** to order SG Iron for pressure rating over 210 bar.

Assembly Model Code\*

**RDHA-LAN-CDZ**

\*Add modifier **/S** to order SG Iron for pressure rating over 210 bar.



Function

A to B and B to A (High Capacity) (Cross-port)

Assembly Model Code\*

**RPIC-LAN-CDW**

\*Add modifier **/S** to order SG Iron for pressure rating over 210 bar.

Assembly Model Code\*

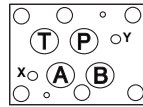
**RDHA-LAN-CDW**

\*Add modifier **/S** to order SG Iron for pressure rating over 210 bar.

NOTES: Page 2 for cartridge models RP\*C-\*\*\* and RD\*A-\*\*\* show performance curves, technical tips, and options.  
See page 140 for technical information about sandwich bodies including ISO interface patterns, mounting instructions, studrods, and studkits.  
Go to [www.sunhydraulics.com](http://www.sunhydraulics.com) for more product information.  
Model Codes printed in red are Preferred Products and are readily available.

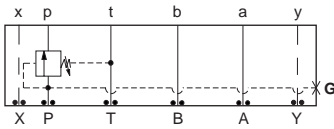
ISO 08 / CETOP 8 SEQUENCE VALVES

T-17A Cavity



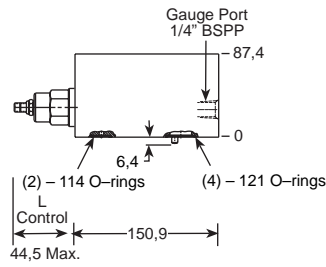
All sandwich bodies shown below are 114,3 mm wide

PILOT OPERATED

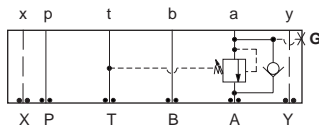


Assembly Model Code\*  
**RSHC-LAN-HBW/M**

\*Add modifier **T** to order SG Iron for pressure rating over 210 bar.

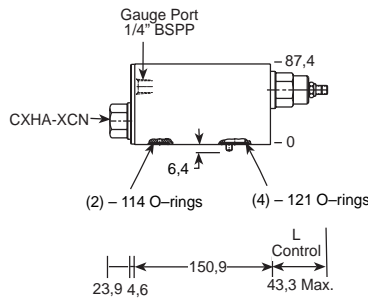


Function  
In to **P**

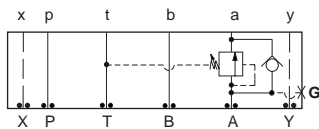


Assembly Model Code\*  
**RSHC-LAN-HB4/M**

\*Add modifier **T** to order SG Iron for pressure rating over 210 bar.

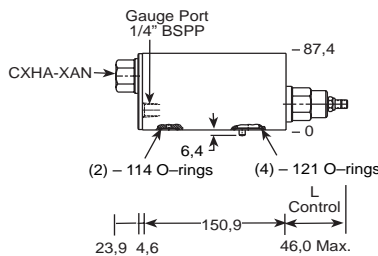


Function  
In to **A** (Reverse Free Flow Check)

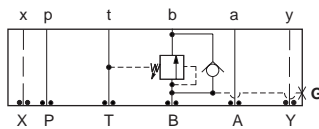


Assembly Model Code\*  
**RSHC-LAN-HB6/M**

\*Add modifier **T** to order SG Iron for pressure rating over 210 bar.

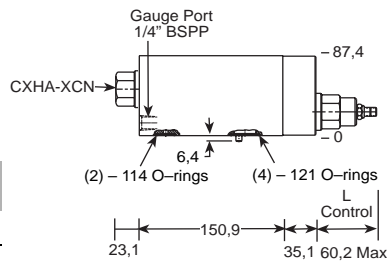


Function  
Out of **A** (Reverse Free Flow Check)



Assembly Model Code\*  
**RSHC-LAN-HB7/M**

\*Add modifier **T** to order SG Iron for pressure rating over 210 bar.



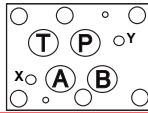
Function  
Out of **B** (Reverse Free Flow Check)

NOTES: Pages 20 for cartridge models RS\*C-\*\*\* and page 102 for CX\*A-A-\*\*\* show performance curves, technical tips, and options. See page 140 for technical information about sandwich bodies including ISO interface patterns, mounting instructions, studrods, and studkits. Go to [www.sunhydraulics.com](http://www.sunhydraulics.com) for more product information. Model Codes printed in red are Preferred Products and are readily available.

**Sandwich Assemblies**

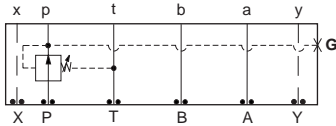
**ISO 08 / CETOP 8 REDUCING VALVES**

**T-19A Cavity/T-17A Cavity**



All sandwich bodies shown below are 114,3 mm wide

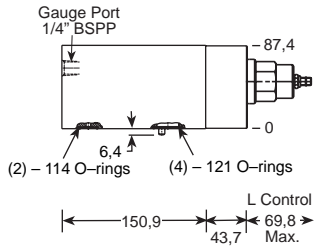
**PILOT OPERATED**



Assembly Model Code\*

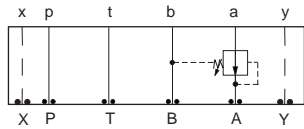
**PBJB-LAN-HBO/M**

\*Add modifier **/T** to order SG Iron for pressure rating over 210 bar.



**Function**

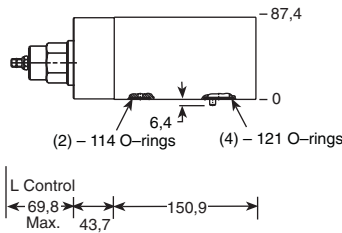
On P Drained to T (High Capacity)



Assembly Model Code\*

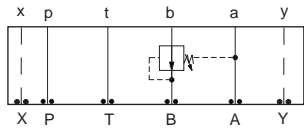
**PBJB-LAN-HBA**

\*Add modifier **/S** to order SG Iron for pressure rating over 210 bar.



**Function**

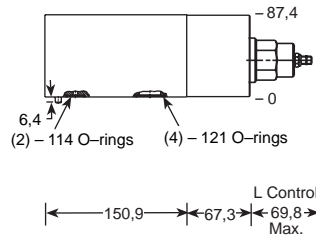
On A Drained to B (High Capacity)



Assembly Model Code\*

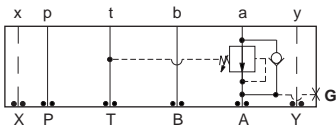
**PBJB-LAN-HBB**

\*Add modifier **/S** to order SG Iron for pressure rating over 210 bar.



**Function**

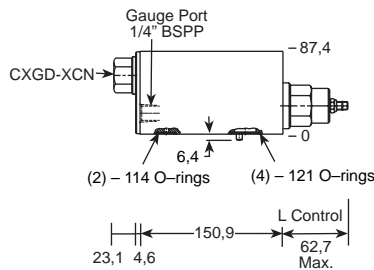
On B Drained to A (High Capacity)



Assembly Model Code\*

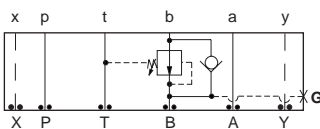
**PBHB-LAN-HBK/M**

\*Add modifier **/T** to order SG Iron for pressure rating over 210 bar.



**Function**

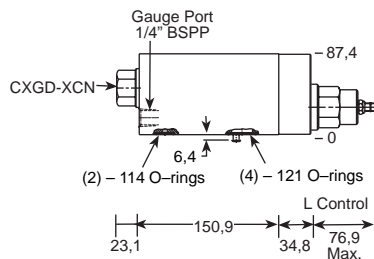
On A Drain to T (Reverse Free Flow Check)



Assembly Model Code\*

**PBHB-LAN-HBJ/M**

\*Add modifier **/T** to order SG Iron for pressure rating over 210 bar.



**Function**

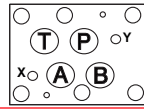
On B Drain to T (Reverse Free Flow Check)

NOTES: Page 34 for cartridge model PBJB-\*\*\* and page 102 for CX\*D-\*\*\* show performance curves, technical tips, and options. See page 140 for technical information about sandwich bodies including ISO interface patterns, mounting instructions, studrods, and studkits. Go to [www.sunhydraulics.com](http://www.sunhydraulics.com) for more product information.

Model Codes printed in red are Preferred Products and are readily available.

ISO 08 / CETOP 8 REDUCING / RELIEF VALVES

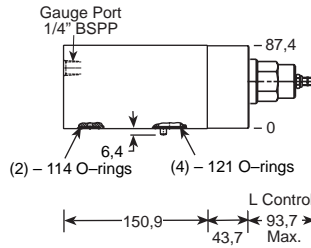
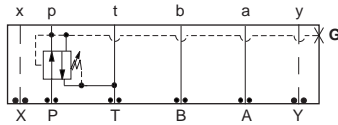
T-19A Cavity/T-17A Cavity



All sandwich bodies shown below are 114,3 mm wide

PILOT OPERATED

DIRECT ACTING



Function

On P Tank to T Drained to T (High Capacity)

Assembly Model Code\*

**PPJB-LAN-HBO/M**

\*Add modifier **/T** to order SG Iron for pressure rating over 210 bar.

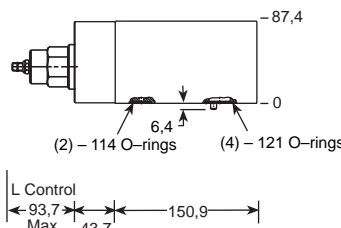
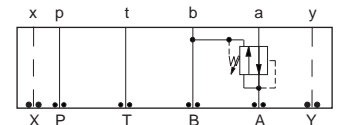
Assembly Model Code\*

**PRJB-LAN-HBO/M**

\*Add modifier **/S** to order SG Iron for pressure rating over 210 bar.

Function

On A Tank to B Drained to B (High Capacity)



Assembly Model Code\*

**PPJB-LAN-HBA**

\*Add modifier **/S** to order SG Iron for pressure rating over 210 bar.

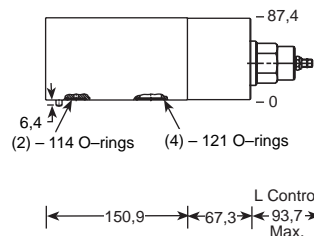
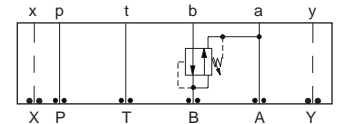
Assembly Model Code\*

**PRJB-LAN-HBA**

\*Add modifier **/S** to order SG Iron for pressure rating over 210 bar.

Function

On B Tank to A Drained to A (High Capacity)



Assembly Model Code\*

**PPJB-LAN-HBB**

\*Add modifier **/S** to order SG Iron for pressure rating over 210 bar.

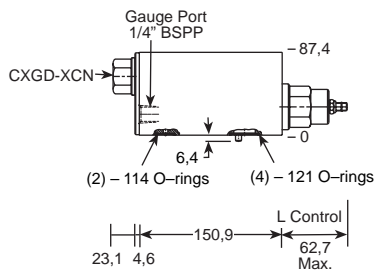
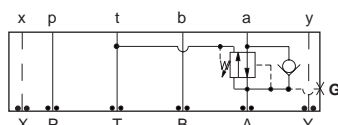
Assembly Model Code\*

**PRJB-LAN-HBB**

\*Add modifier **/S** to order SG Iron for pressure rating over 210 bar.

Function

On A Tank to T Drained to T (Reverse Free Flow Check)



Assembly Model Code\*

**PPHB-LAN-HBK/M**

\*Add modifier **/T** to order SG Iron for pressure rating over 210 bar.

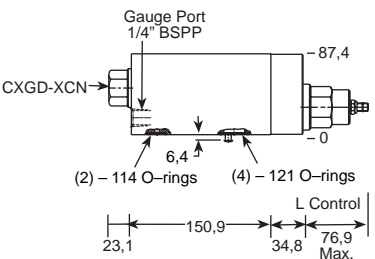
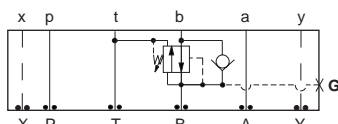
Assembly Model Code\*

**PRHB-LAN-HBK/M**

\*Add modifier **/T** to order SG Iron for pressure rating over 210 bar.

Function

On B Tank to T Drained to T (Reverse Free Flow Check)



Assembly Model Code\*

**PPHB-LAN-HBJ/M**

\*Add modifier **/T** to order SG Iron for pressure rating over 210 bar.

Assembly Model Code\*

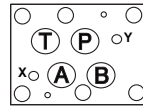
**PRHB-LAN-HBJ/M**

\*Add modifier **/T** to order SG Iron for pressure rating over 210 bar.

NOTES: Page 42 for cartridge model PP\*B-\*\*\* and PR\*B-\*\*\*, and page 102 for CX\*D-\*\*\* shows performance curves, technical tips, and options. See page 140 for technical information about sandwich bodies including ISO interface patterns, mounting instructions, studrods, and studkits. Go to [www.sunhydraulics.com](http://www.sunhydraulics.com) for more product information. Model Codes printed in red are Preferred Products and are readily available.

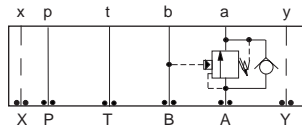
## ISO 08 / CETOP 8 COUNTERBALANCE VALVES

## T-19A Cavity



All sandwich bodies shown below are 114,3 mm wide

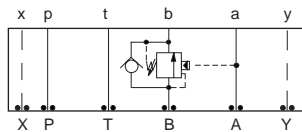
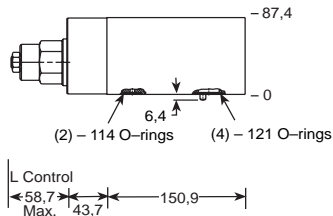
**PILOT RATIOS**  
3:1, 1.5:1 and 2:1



Assembly  
Model Code\*

**CBI\*-LHN-HBA**

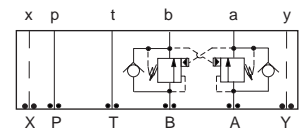
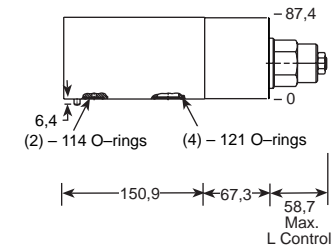
\*Add modifier **/S** to order SG Iron for pressure rating over 210 bar.



Assembly  
Model Code\*

**CBI\*-LHN-HBB**

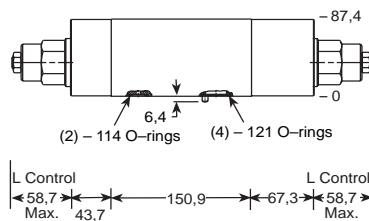
\*Add modifier **/S** to order SG Iron for pressure rating over 210 bar.



Assembly  
Model Code\*

**CBI\*-LHN-HBY**

\*Add modifier **/S** to order SG Iron for pressure rating over 210 bar.



**PILOT RATIOS**  
2.3:1, 4.5:1 and 10:1

## Function

On **A** Pilot from **B** (High Capacity)

Assembly  
Model Code\*

**CBI\*-LJN-HBA**

\*Add modifier **/S** to order SG Iron for pressure rating over 210 bar.

## Function

On **B** Pilot from **A** (High Capacity)

Assembly  
Model Code\*

**CBI\*-LJN-HBB**

\*Add modifier **/S** to order SG Iron for pressure rating over 210 bar.

## Function

On **A** and **B**  
(Cross-Piloted) (High Capacity)

Assembly  
Model Code\*

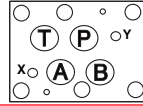
**CBI\*-LJN-HBY**

\*Add modifier **/S** to order SG Iron for pressure rating over 210 bar.

NOTES: Page 50 for cartridge model CB\*\*-\* show performance curves, technical tips, and options.  
See page 140 for technical information about sandwich bodies including ISO interface patterns, mounting instructions, studrods, and studkits.  
Go to [www.sunhydraulics.com](http://www.sunhydraulics.com) for more product information.  
Model Codes printed in red are Preferred Products and are readily available.

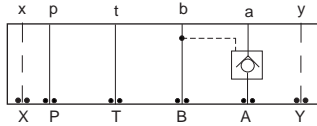
ISO 08 / CETOP 8 PILOT-TO-OPEN CHECK VALVES

T-19A Cavity



All sandwich bodies shown below are 114,3 mm wide

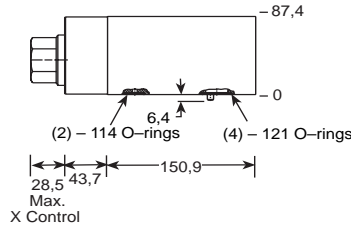
PILOT OPERATED



Assembly Model Code\*

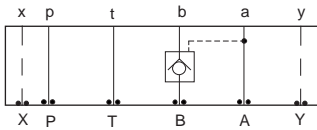
**CKIB-XCN-HBA**

\*Add modifier /S to order SG Iron for pressure rating over 210 bar.



Function

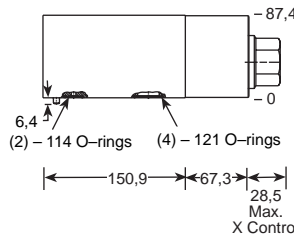
On A Pilot from B (High Capacity)



Assembly Model Code\*

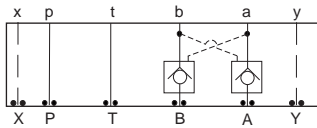
**CKIB-XCN-HBB**

\*Add modifier /S to order SG Iron for pressure rating over 210 bar.



Function

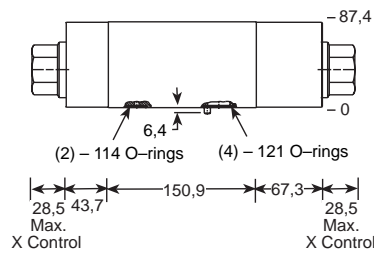
On B Pilot from A (High Capacity)



Assembly Model Code\*

**CKIB-XCN-HBY**

\*Add modifier /S to order SG Iron for pressure rating over 210 bar.



Function

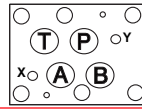
On A and B Cross-Piloted (High Capacity)

NOTES: Page 78 for cartridge model CK\*\*-\*\*\* show performance curves, technical tips, and options. See page 140 for technical information about sandwich bodies including ISO interface patterns, mounting instructions, studrods, and studkits. Go to [www.sunhydraulics.com](http://www.sunhydraulics.com) for more product information. Model Codes printed in red are Preferred Products and are readily available.

**Sandwich Assemblies**

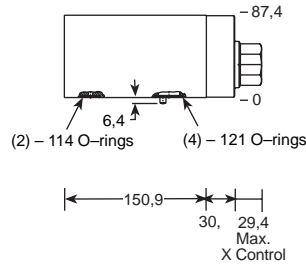
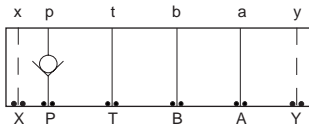
**ISO 08 / CETOP 8 CHECK VALVES**

**T-18A Cavity/T-16A Cavity**



All sandwich bodies shown below are 114,3 mm wide

**CHECK VALVE**



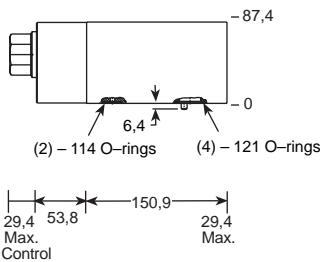
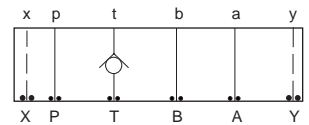
**Function**

On **P** (High Capacity)

Assembly Model Code\*

**CXJA-XCN-IBO**

\*Add modifier **/S** to order SG Iron for pressure rating over 210 bar.



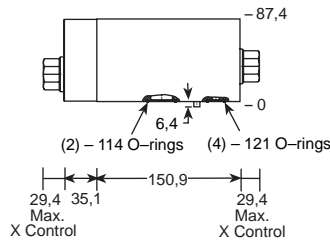
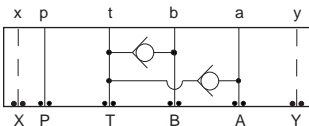
**Function**

On **T** (High Capacity)

Assembly Model Code\*

**CXJA-XCN-IBV**

\*Add modifier **/S** to order SG Iron for pressure rating over 210 bar.



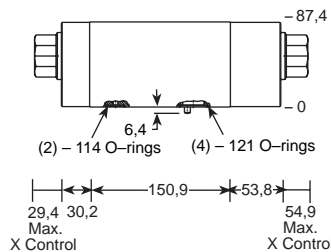
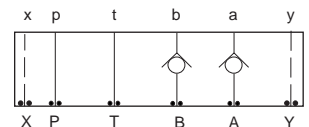
**Function**

**T to A and B**

Assembly Model Code\*

**CXHA-XAN-CDV**

\*Add modifier **/S** to order SG Iron for pressure rating over 210 bar.



**Function**

On **A** and **B** Free Flow Out of Valve (High Capacity)

Assembly Model Code\*

**CXJA-XCN-IBZ**

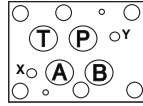
\*Add modifier **/S** to order SG Iron for pressure rating over 210 bar.

NOTES: Page 102 for cartridge model CX\*A-\*\*\* shows performance curves, technical tips, and options. See page 140 for technical information about sandwich bodies including ISO interface patterns, mounting instructions, studrods, and studkits. Go to [www.sunhydraulics.com](http://www.sunhydraulics.com) for more product information. Model Codes printed in red are Preferred Products and are readily available.



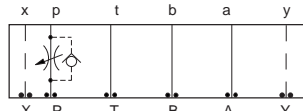
ISO 08 / CETOP 8 FLOW CONTROL VALVES

T-18A Cavity



All sandwich bodies shown below are 114,3 mm wide

FULLY ADJUSTABLE NEEDLE

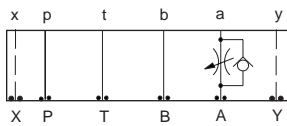


Note: Free Flow Check on FDFA Only

Assembly Model Code\*  
**NFFC-LGN-IBO**

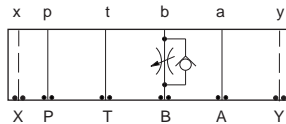
\*Add modifier /S to order SG Iron for pressure rating over 210 bar.

FULLY ADJUSTABLE NEEDLE WITH FREE FLOW CHECK



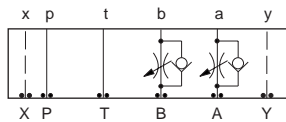
Assembly Model Code\*  
**NCGB-LCN-IBE**

\*Add modifier /S to order SG Iron for pressure rating over 210 bar.



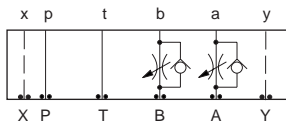
Assembly Model Code\*  
**NCGB-LCN-IBF**

\*Add modifier /S to order SG Iron for pressure rating over 210 bar.



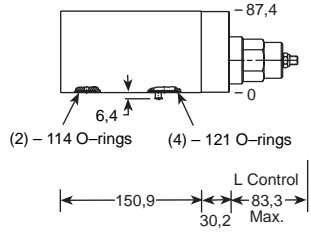
Assembly Model Code\*  
**NCGB-LCN-IBZ**

\*Add modifier /S to order SG Iron for pressure rating over 210 bar.



Assembly Model Code\*  
**NCGB-LCN-IBY**

\*Add modifier /S to order SG Iron for pressure rating over 210 bar.



FULLY ADJUSTABLE PRESSURE COMPENSATED WITH FREE FLOW CHECK

Function  
Meter-In P (High Capacity)

Assembly Model Code\*  
**FDFA-LAN-IBO**

\*Add modifier /S to order SG Iron for pressure rating over 210 bar.

Function  
Meter-Out A (High Capacity)

Assembly Model Code\*  
**FDFA-LAN-IBE**

\*Add modifier /S to order SG Iron for pressure rating over 210 bar.

Function  
Meter-Out B (High Capacity)

Assembly Model Code\*  
**FDFA-LAN-IBF**

\*Add modifier /S to order SG Iron for pressure rating over 210 bar.

Function  
Meter-In A and B (High Capacity)

Assembly Model Code\*  
**FDFA-LAN-IBZ**

\*Add modifier /S to order SG Iron for pressure rating over 210 bar.

Function  
Meter-Out A and B (High Capacity)

Assembly Model Code\*  
**FDFA-LAN-IBY**

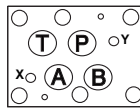
\*Add modifier /S to order SG Iron for pressure rating over 210 bar.

NOTES: Page 110 for cartridge model NC\*B-\*\*\* and page 126 for FD\*A-\*\*\* show performance curves, technical tips, and options. See page 140 for technical information about sandwich bodies including ISO interface patterns, mounting instructions, studrods, and studkits. Go to [www.sunhydraulics.com](http://www.sunhydraulics.com) for more product information. Model Codes printed in red are Preferred Products and are readily available.

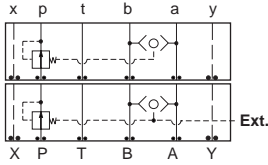
**Sandwich Assemblies**

**ISO 08 / CETOP 8 CIRCUIT SAVER VALVES  
(PRESSURE COMPENSATOR / LOAD SENSING / REGENERATIVE)**

**T-13A Cavity/T-19A Cavity**



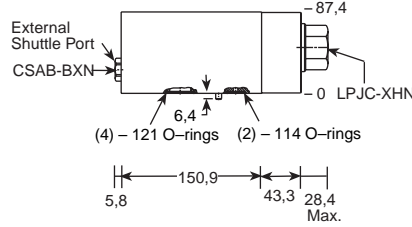
All sandwich bodies shown below are 114,3 mm wide



External Shuttle Port Assembly Model Code\*

1/4" BSPP **YFIB-XHN-CA/M**

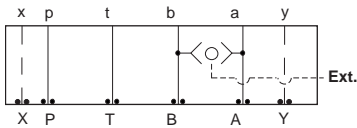
\*Add modifier **T** to order SG Iron for pressure rating on YFIB over 210 bar. Add **/S** for YFIA.



**Function**

YFIA: Pressure Compensator (Restrictive)

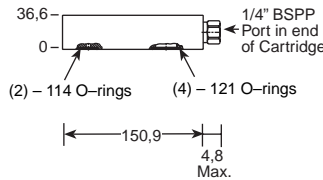
YFIB: Pressure Compensator (Restrictive) with Load-Sensing Port



Assembly Model Code\*

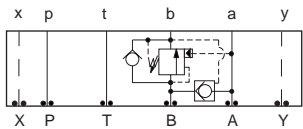
**CSAA-BXN-IBS**

\*Add modifier **/S** to order SG Iron for pressure rating over 210 bar.



**Function**

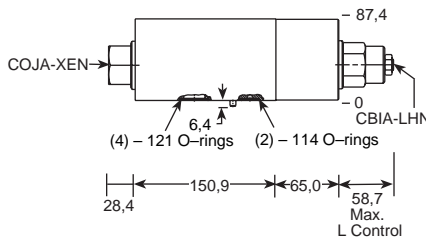
Shuttle A and B (Output External)



Assembly Model Code\*

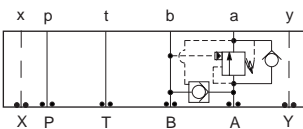
**YDGF-LHN-CA**

\*Add modifier **/S** to order SG Iron for pressure rating over 210 bar.



**Function**

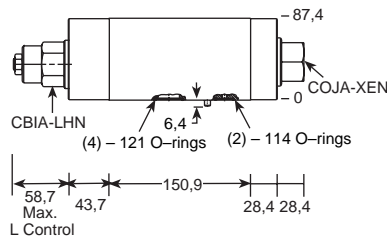
B to A Regenerative (High Capacity)



Assembly Model Code\*

**YDGE-LHN-CA**

\*Add modifier **/S** to order SG Iron for pressure rating over 210 bar.



**Function**

A to B Regenerative (High Capacity)

NOTES: Page 50 for cartridge model CB\*A-\*\*\* shows performance curves, technical tips, and options. See page 140 for technical information about sandwich bodies including ISO interface patterns, mounting instructions, studrods, and studkits. Go to [www.sunhydraulics.com](http://www.sunhydraulics.com) for more product information.