

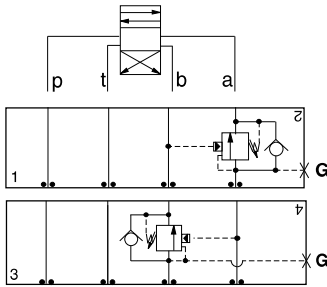


ISO 03 SANDWICH BODIES



- Aluminum rated to 3000 psi and Ductile Iron rated to 5000 psi.
- See page viii for ordering cartridge/body and seals. Pressure ratings, material specifications on page xiv.

03 COUNTERBALANCE

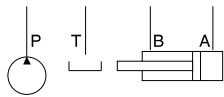
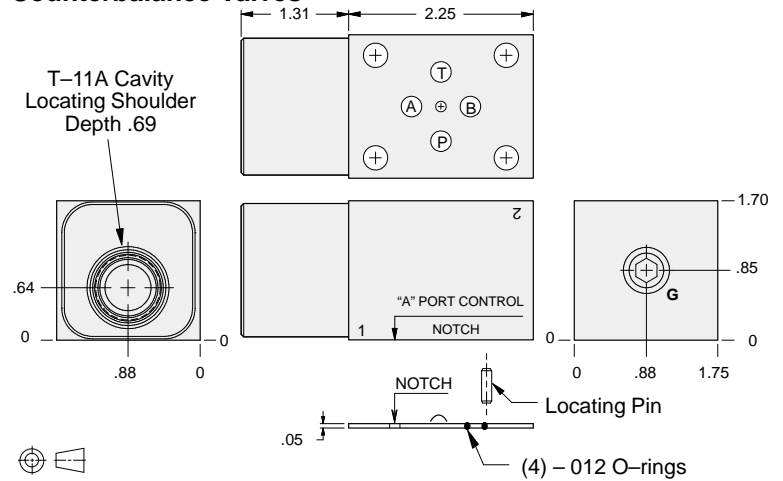


FUNCTION

On **A**
Pilot from **B**

On **B**
Pilot from **A**

Counterbalance Valves



Gage Port (Plugged)	ALUMINUM		DUCTILE IRON	
	Model Code	List Price	Model Code	List Price
.25 NPTF	EBA		EBA/S	
.25 BSPP	EBA/M		EBA/T	

TYPICAL CARTRIDGES USED WITH BODIES SHOWN ABOVE

	Counterbalance Valve, 3:1 Pilot Ratio		
	CBCA Page 4.10		
	Counterbalance Valve, 4.5:1 Pilot Ratio		
	CBCG Page 4.12		
	Counterbalance Valve, 10:1 Pilot Ratio		
	CBCH Page 4.14		
OTHER VALVES:			

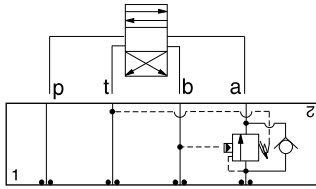


ISO 03 SANDWICH BODIES



- Aluminum rated to 3000 psi and Ductile Iron rated to 5000 psi.
- See page viii for ordering cartridge/body and seals. Pressure ratings, material specifications on page xiv.

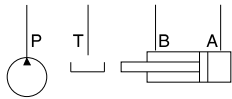
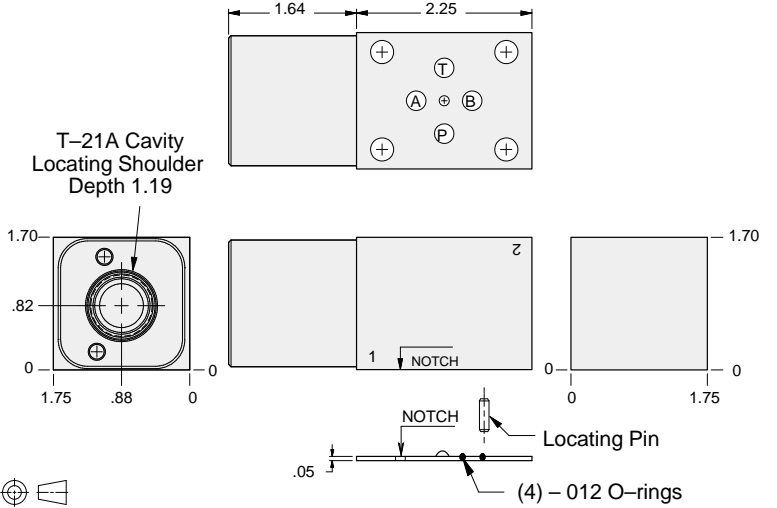
03 COUNTERBALANCE



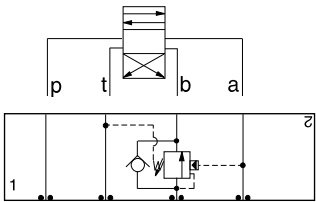
FUNCTION

On A Pilot
from B
Vent to T

Counterbalance Valves



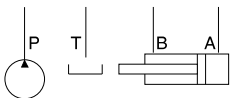
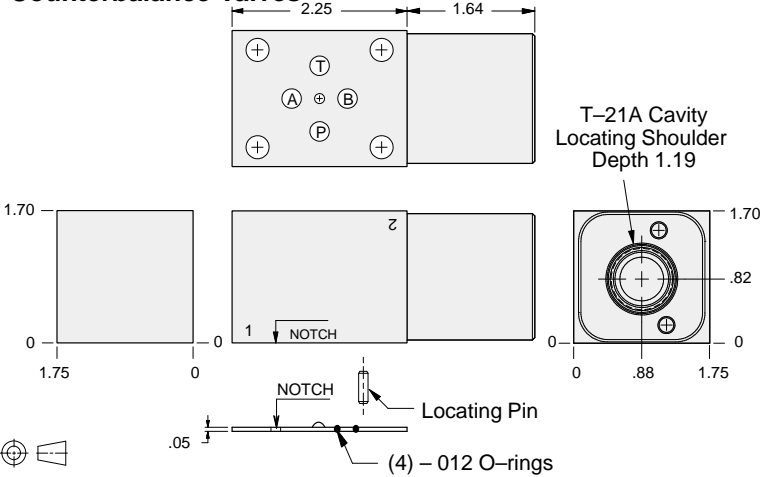
ALUMINUM		DUCTILE IRON	
Model Code	List Price	Model Code	List Price
MBA		MBA/S	



FUNCTION

On B Pilot from A
Vent to T

Counterbalance Valves



ALUMINUM		DUCTILE IRON	
Model Code	List Price	Model Code	List Price
MBB		MBB/S	

TYPICAL CARTRIDGES USED WITH BODIES SHOWN ABOVE

	Vented Counterbalance Valve, 3:1 Pilot Ratio		
	CWCA Page 4.18		
	Vented Counterbalance Valve, 5:1 Pilot Ratio		
	CWCG Page 4.20		
OTHER VALVES:			

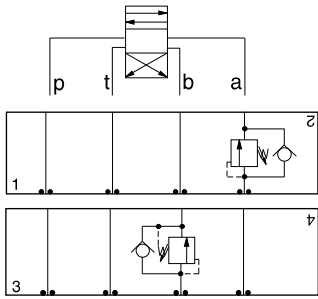


ISO 03 SANDWICH BODIES



- Aluminum rated to 3000 psi and Ductile Iron rated to 5000 psi.
- See page viii for ordering cartridge/body and seals. Pressure ratings, material specifications on page xiv.

03 COUNTERBALANCE

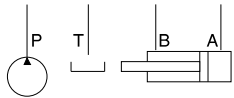
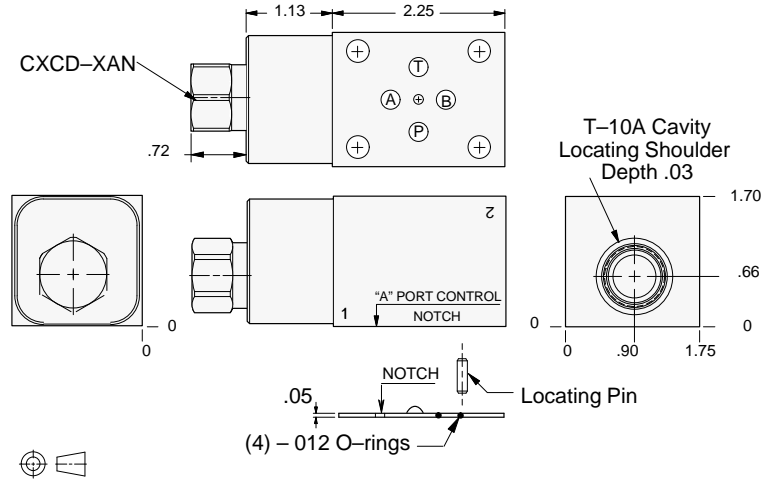


FUNCTION

On A
No pilot assist

On B
No pilot assist

Counterbalance Valves



ALUMINUM		DUCTILE IRON	
Model Code	List Price	Model Code	List Price
FB4		FB4/S	

TYPICAL CARTRIDGES USED WITH BODIES SHOWN ABOVE

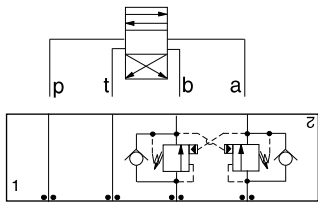
	Direct Acting Relief Valve		
	RDDA Page 1.10		
OTHER VALVES:			



ISO 03 SANDWICH BODIES



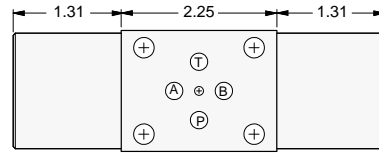
- Aluminum rated to 3000 psi and Ductile Iron rated to 5000 psi.
- See page viii for ordering cartridge/body and seals. Pressure ratings, material specifications on page xiv.



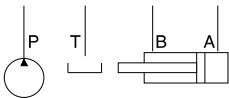
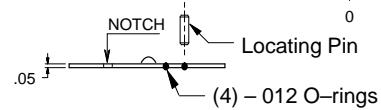
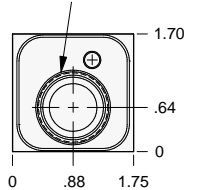
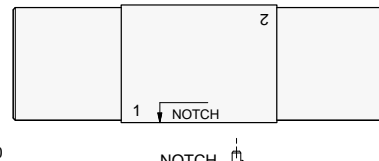
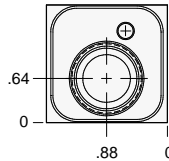
FUNCTION

On A and B
Cross-Piloted

Counterbalance Valves



T-11A Cavity
Locating Shoulder
Depth .69
2 places.



ALUMINUM		DUCTILE IRON	
Model Code	List Price	Model Code	List Price
EBY		EBY/S	

03 COUNTERBALANCE

TYPICAL CARTRIDGES USED WITH BODIES SHOWN ABOVE

	Counterbalance Valve, 3:1 Pilot Ratio		
	CBCA Page 4.10		
	Counterbalance Valve, 4.5:1 Pilot Ratio		
	CBCG Page 4.12		
	Counterbalance Valve, 10:1 Pilot Ratio		
	CBCH Page 4.14		
OTHER VALVES:			

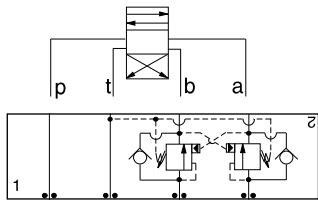


ISO 03 SANDWICH BODIES



- Aluminum rated to 3000 psi and Ductile Iron rated to 5000 psi.
- See page viii for ordering cartridge/body and seals. Pressure ratings, material specifications on page xiv.

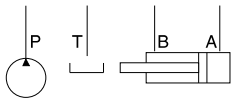
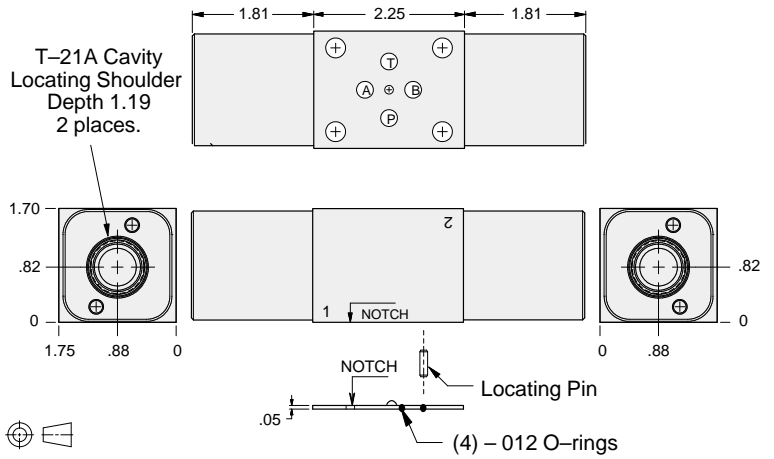
03 COUNTERBALANCE



FUNCTION

On **A** and **B**
 Cross-Piloted
 Vents to **T**

Counterbalance Valves



ALUMINUM		DUCTILE IRON	
Model Code	List Price	Model Code	List Price
MBY		MBY/S	

TYPICAL CARTRIDGES USED WITH BODIES SHOWN ABOVE

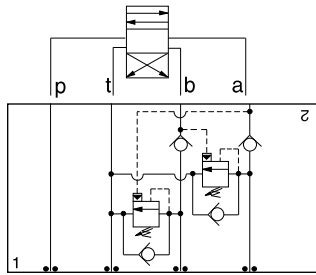
	Vented Counterbalance Valve, 3:1 Pilot Ratio		
	CWCA Page 4.18		
	Vented Counterbalance Valve, 5:1 Pilot Ratio		
	CWCG Page 4.20		
OTHER VALVES:			



ISO 03 SANDWICH BODIES



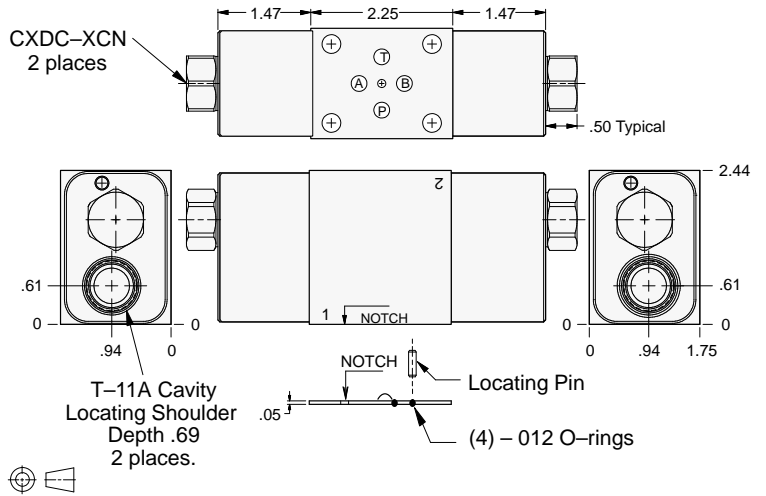
- Aluminum rated to 3000 psi and Ductile Iron rated to 5000 psi.
- See page viii for ordering cartridge/body and seals. Pressure ratings, material specifications on page xiv.



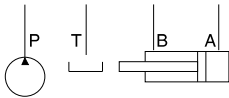
FUNCTION

Cushion Lock
Circuit
On **A** and **B**

Counterbalance Valves



03 COUNTERBALANCE



ALUMINUM		DUCTILE IRON	
Model Code	List Price	Model Code	List Price
EB8		EB8/S	

TYPICAL CARTRIDGES USED WITH BODIES SHOWN ABOVE			
	Counterbalance Valve, 3:1 Pilot Ratio		
	CBCA Page 4.10		
	Counterbalance Valve, 4.5:1 Pilot Ratio		
	CBCG Page 4.12		
	Counterbalance Valve, 10:1 Pilot Ratio		
	CBCH Page 4.14		
OTHER VALVES:			