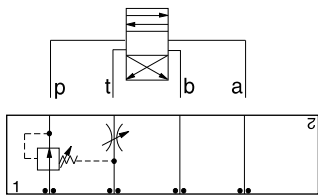




ISO 03 SANDWICH BODIES



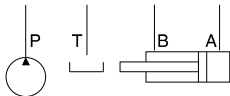
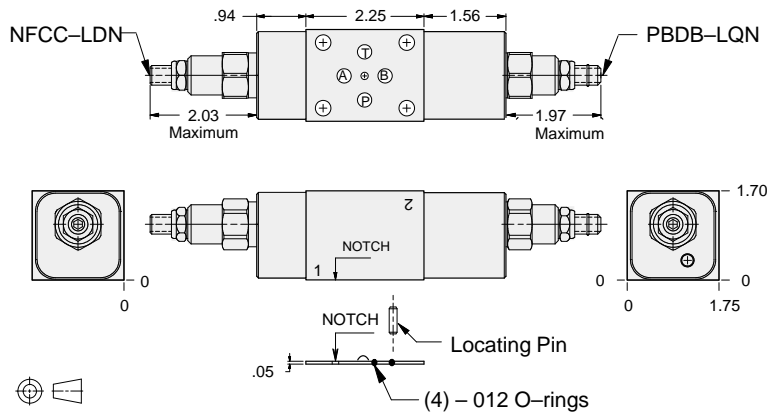
- Aluminum rated to 3000 psi and Ductile Iron rated to 5000 psi.
- See page viii for ordering cartridge/body and seals. Pressure ratings, material specifications on page xiv.



FUNCTION

Pilot Choke

Circuit Savers



ALUMINUM		DUCTILE IRON	
Model Code	List Price	Model Code	List Price
YNAA-LDN-AA		YNAA-LDN-AA/S	

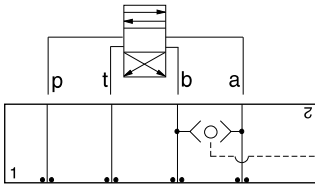


ISO 03 SANDWICH BODIES



- Aluminum rated to 3000 psi and Ductile Iron rated to 5000 psi.
- See page viii for ordering cartridge/body and seals. Pressure ratings, material specifications on page xiv.

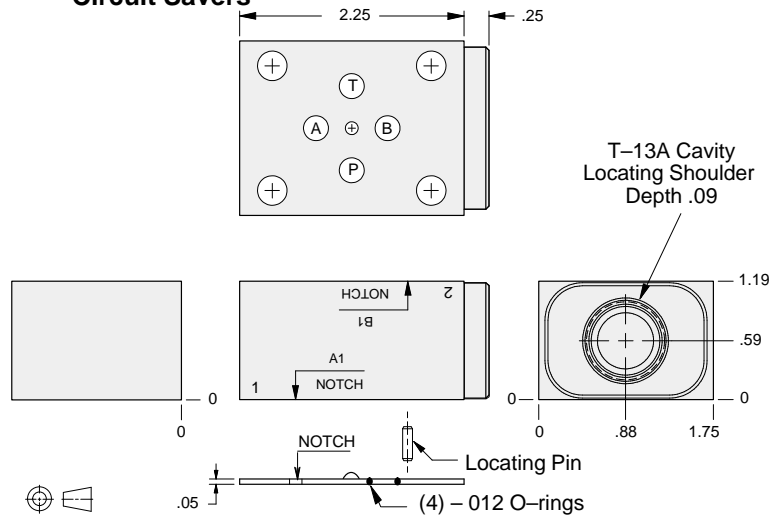
03 CIRCUIT SAVER



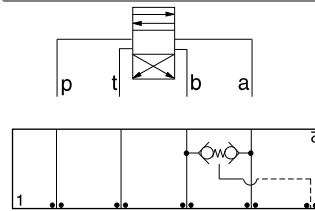
FUNCTION

Shuttle
A and B
Output External

Circuit Savers



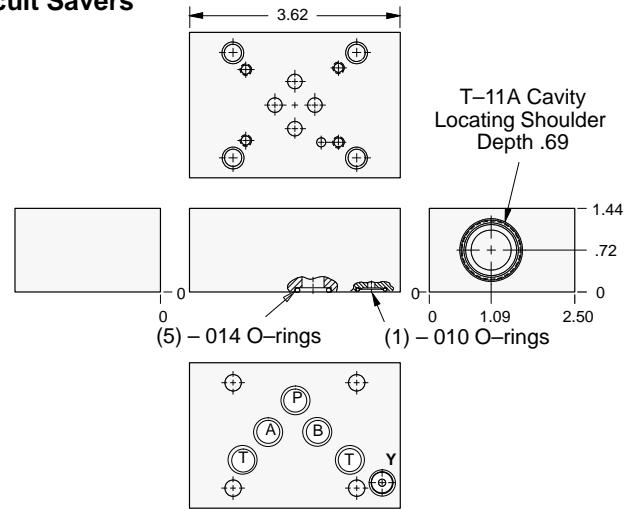
ALUMINUM		DUCTILE IRON	
Model Code	List Price	Model Code	List Price
GBS		GBS/S	



FUNCTION

Checks from
A and B-Adapter
to ISO 05 w/Y Port

Circuit Savers



ALUMINUM		DUCTILE IRON	
Model Code	List Price	Model Code	List Price
EBS		EBS/S	

TYPICAL CARTRIDGES USED WITH BODIES SHOWN ABOVE

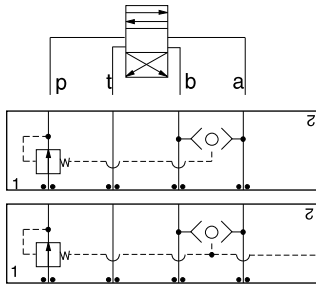
<p>1-2 Ext.</p>	2 Port Shuttle Valve, Signal External		
	CSAA Page 10.09 (use with GBS)		
<p>1-2 3</p>	3 Port Back-to-Back Check Valve, Signal at Port 3		
	CDAB Page 10.10 (use with EBS)		
OTHER VALVES:			



ISO 03 SANDWICH BODIES



- Aluminum rated to 3000 psi and Ductile Iron rated to 5000 psi.
- See page viii for ordering cartridge/body and seals. Pressure ratings, material specifications on page xiv.

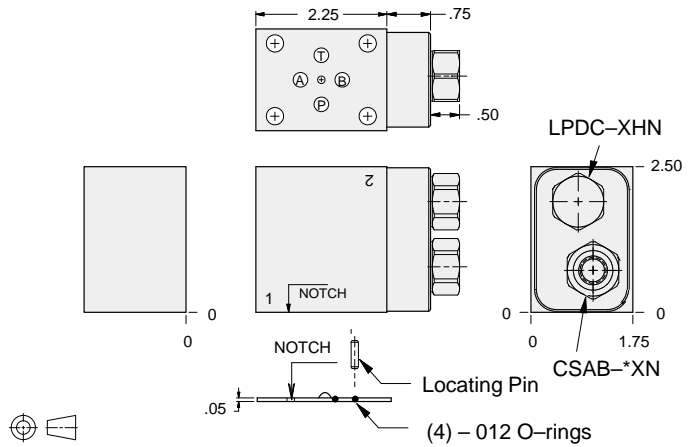


FUNCTION

Pressure Compensator (Restrictive)

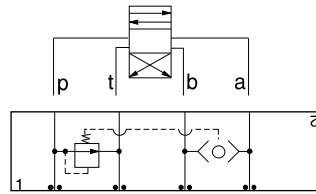
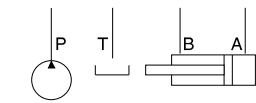
Pressure Compensator (Restrictive) w/Load-Sensing Port

Circuit Savers



Shuttle Cartridge	External Shuttle Port	ALUMINUM		DUCTILE IRON	
		Model Code	List Price	Model Code	List Price
CSAB-XXN	None	YFCG-XHN-AA		YFCG-XHN-AA/S	
CSAB-AXN	SAE-4	YFCJ-XHN-AA		YFCJ-XHN-AA/S	
CSAB-BXN	.250 BSPP	YFCJ-XHN-AA/M		YFCJ-XHN-AA/T	

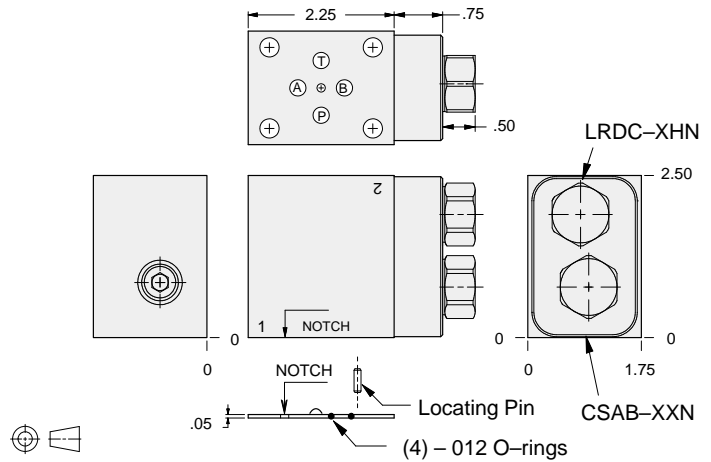
03 CIRCUIT SAVER



FUNCTION

Pressure Compensator (Bypass)

Circuit Savers



ALUMINUM		DUCTILE IRON	
Model Code	List Price	Model Code	List Price
YFCK-XHN-AA		YFCK-XHN-AA/S	

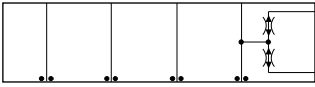
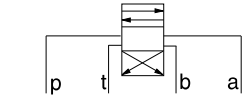


ISO 03 SANDWICH BODIES



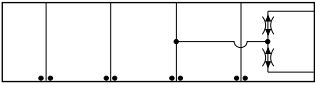
- Aluminum rated to 3000 psi and Ductile Iron rated to 5000 psi.
- See page viii for ordering cartridge/body and seals. Pressure ratings, material specifications on page xiv.

03 CIRCUIT SAVER

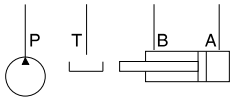


FUNCTION

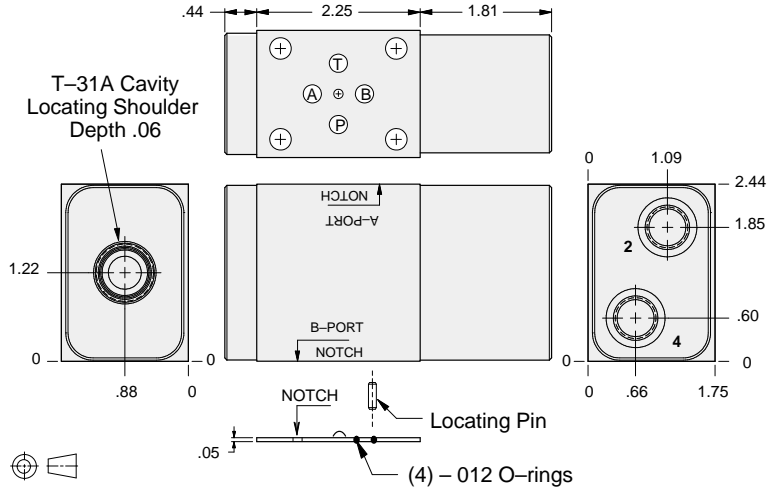
Flow Divider and/or Combiner on **A**



Flow Divider and/or Combiner on **B**



Circuit Savers



Ports 2,4	ALUMINUM		DUCTILE IRON	
	Model Code	List Price	Model Code	List Price
SAE-6	MBJ		MBJ/S	
.25 BSPP	MBJ/M		MBJ/T	

TYPICAL CARTRIDGES USED WITH BODIES SHOWN ABOVE

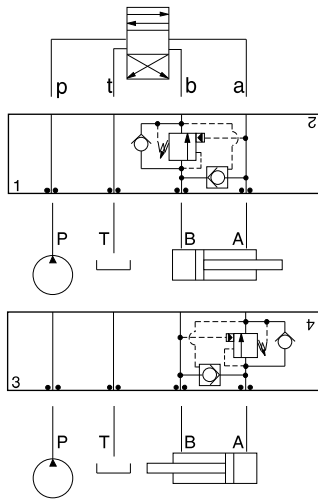
	Flow Divider		High Capacity Flow Divider/Combiner
	FSBD, FSCD Page 7.08		FSCH Page 7.14
	Flow Divider/Combiner		
	FSBA, FSCA Page 7.10		
	Synchronizing Flow Divider/Combiner		
	FSBS, FSCS Page 7.12		
OTHER VALVES:			



ISO 03 SANDWICH BODIES



- Aluminum rated to 3000 psi and Ductile Iron rated to 5000 psi.
- See page viii for ordering cartridge/body and seals. Pressure ratings, material specifications on page xiv.

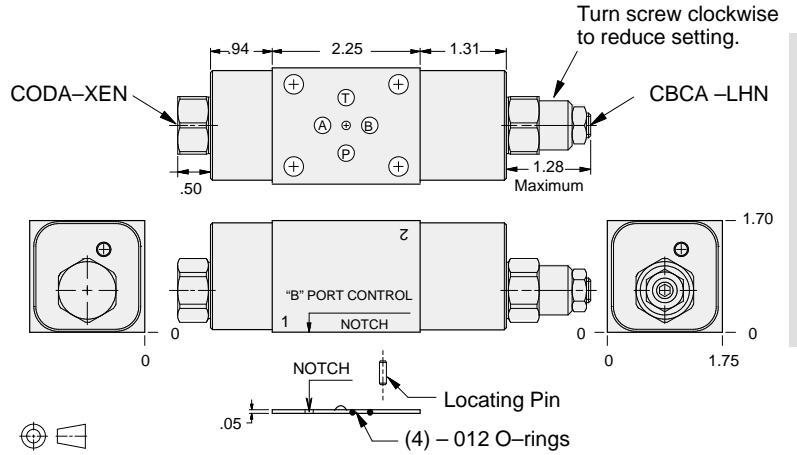


FUNCTION

B to A
Regenerative

A to B
Regenerative

Circuit Savers



03 CIRCUIT SAVER

ALUMINUM		DUCTILE IRON	
Model Code	List Price	Model Code	List Price
YDCA-LHN-AA		YDCA-LHN-AA/S	

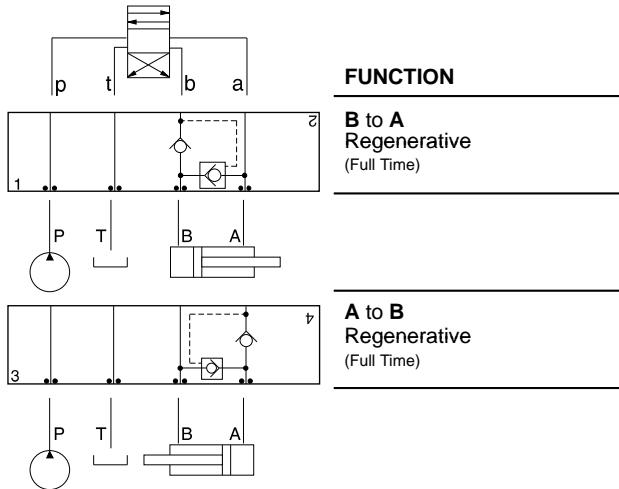


ISO 03 SANDWICH BODIES

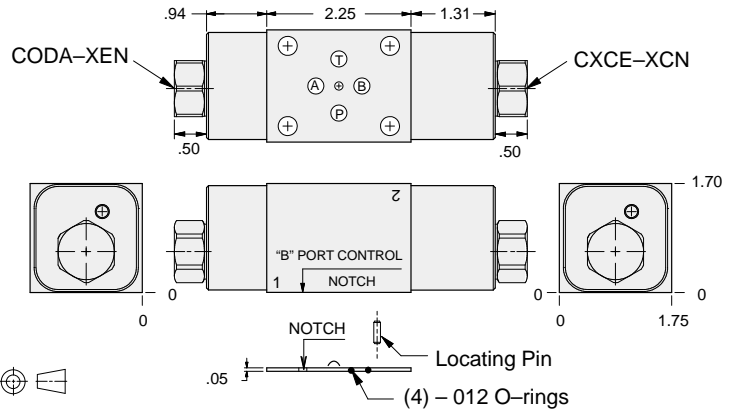


- Aluminum rated to 3000 psi and Ductile Iron rated to 5000 psi.
- See page viii for ordering cartridge/body and seals. Pressure ratings, material specifications on page xiv.

03 CIRCUIT SAVER



Circuit Savers



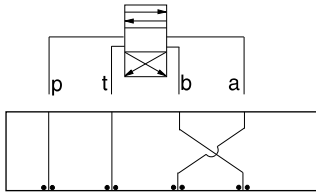
ALUMINUM		DUCTILE IRON	
Model Code	List Price	Model Code	List Price
YDCF-XCN-AA		YDCF-XCN-AA/S	



ISO 03 SANDWICH BODIES

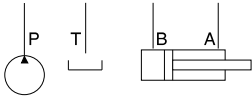


- Aluminum rated to 3000 psi and Ductile Iron rated to 5000 psi.
- See page viii for ordering cartridge/body and seals. Pressure ratings, material specifications on page xiv.

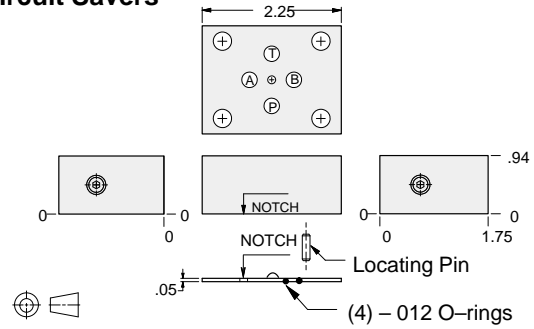


FUNCTION

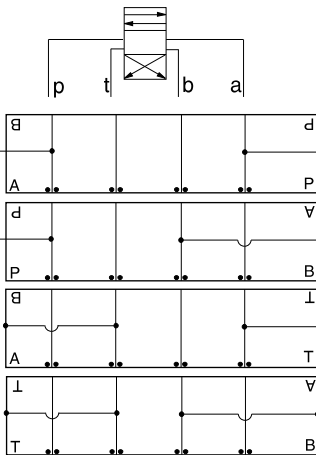
Swap Block
Swaps A and B



Circuit Savers



ALUMINUM		DUCTILE IRON	
Model Code	List Price	Model Code	List Price
ZKX		ZKX/S	



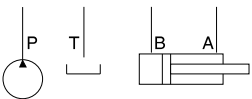
FUNCTION

P and A
Tap in Manifold

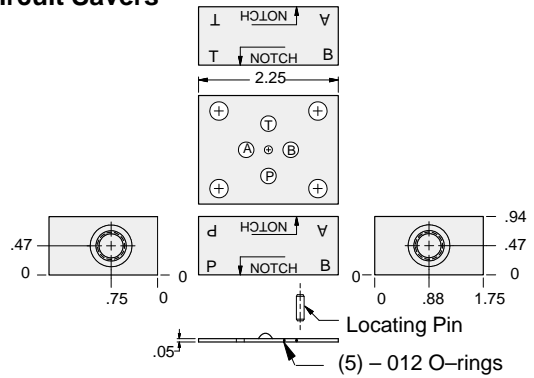
P and B
Tap in Manifold

A and T
Tap in Manifold

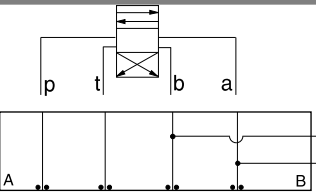
B and T
Tap in Manifold



Circuit Savers

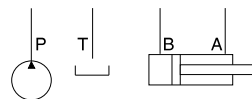


External Port	ALUMINUM		DUCTILE IRON	
	Model Code	List Price	Model Code	List Price
.25 NPTF	ZWW		ZWW/S	
SAE-4	ZPT		ZPT/S	
.25 BSPP	ZVC		ZVC/S	

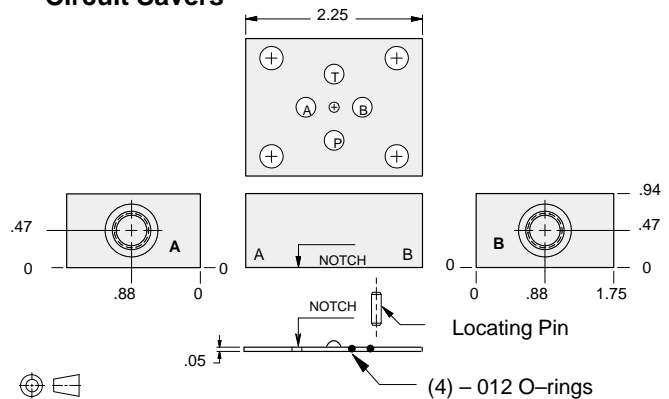


FUNCTION

A and B
Tap in Manifold



Circuit Savers



Ports A, B	ALUMINUM		DUCTILE IRON	
	Model Code	List Price	Model Code	List Price
.25 NPTF	ZWV		ZWV/S	
SAE-4	ZUO		ZUO/S	
.25 BSPP	ZVB		ZVB/S	

03 CIRCUIT SAVER