

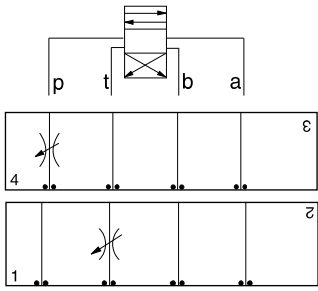


ISO 03 SANDWICH BODIES



- Aluminum rated to 3000 psi and Ductile Iron rated to 5000 psi.
- See page viii for ordering cartridge/body and seals. Pressure ratings, material specifications on page xiv.

03 FLOW CONTROL

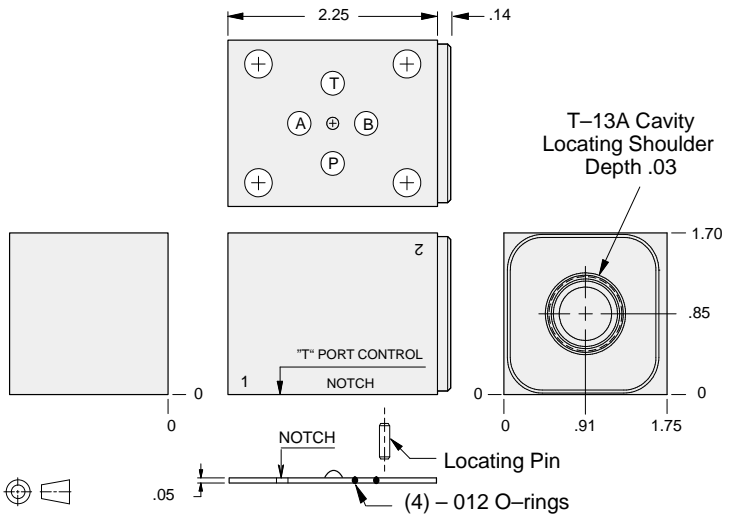


FUNCTION

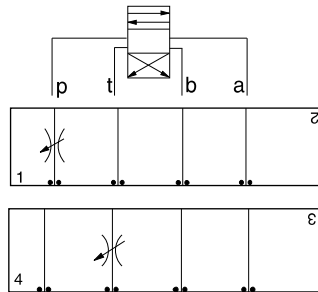
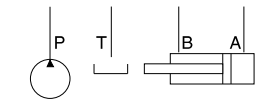
Meter-In P

Meter-Out T

Flow Control Valves



ALUMINUM		DUCTILE IRON	
Model Code	List Price	Model Code	List Price
GBP		GBP/S	

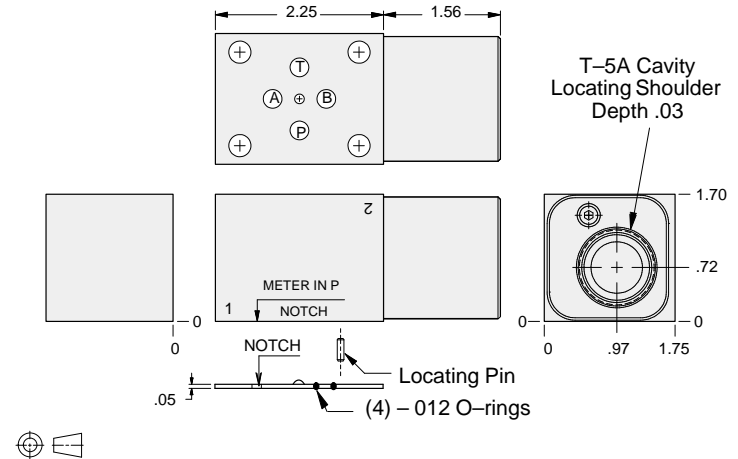


FUNCTION

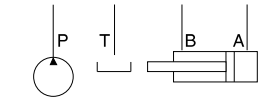
Meter-In P
(High Capacity)

Meter-Out T
(High Capacity)

Flow Control Valves



ALUMINUM		DUCTILE IRON	
Model Code	List Price	Model Code	List Price
GBO		GBO/S	



TYPICAL CARTRIDGES USED WITH BODIES SHOWN ABOVE

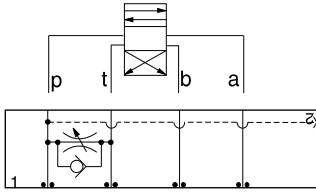
	Fully Adjustable Needle Valve		
	NF*C Page 5.12		
	Fixed Orifice, Pressure-Compensated Flow Control		
	FX*A Page 5.20		
OTHER VALVES:			



ISO 03 SANDWICH BODIES



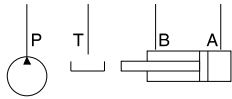
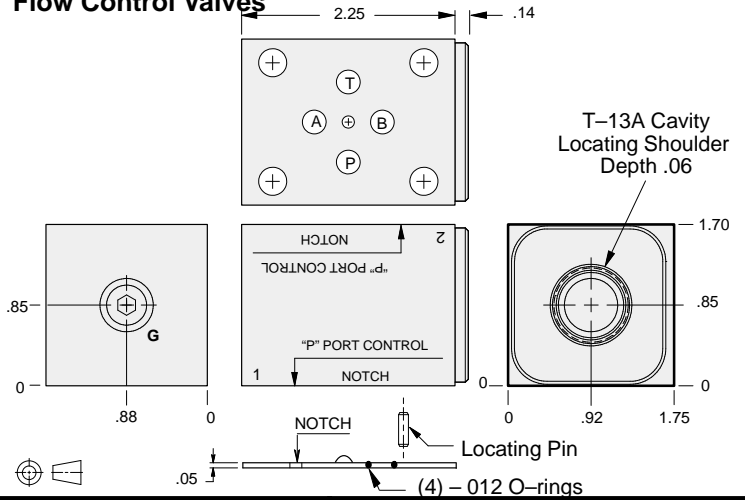
- Aluminum rated to 3000 psi and Ductile Iron rated to 5000 psi.
- See page viii for ordering cartridge/body and seals. Pressure ratings, material specifications on page xiv.



FUNCTION

Bleed-Off
P to T

Flow Control Valves



Gage Port (Plugged)	ALUMINUM		DUCTILE IRON	
	Model Code	List Price	Model Code	List Price
.25 NPTF	GBQ		GBQ/S	
.25 BSPP	GBQ/M		GBQ/T	

03 FLOW CONTROL

TYPICAL CARTRIDGES USED WITH BODIES SHOWN ABOVE

	Fully Adjustable Needle Valve		Fixed Orifice, Pressure-Compensated Flow Control
	NFCC Page 5.12		FXCA Page 5.20
	Fully Adjustable Needle Valve with Reverse Free Flow Check		Fixed Orifice, Pressure-Compensated Flow Control with Reverse Free Flow Check
	NCCB Page 5.16		FCCB Page 5.22
	Fully Adjustable Needle Valve with Reverse Free Flow Check, Low Flow		Fully Adjustable, Pressure-Compensated Flow Control with Reverse Free Flow Check
	NCCC Page 5.18		FDBA Page 5.24
OTHER VALVES:	CNCC		

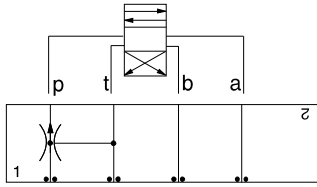


ISO 03 SANDWICH BODIES



- Aluminum rated to 3000 psi and Ductile Iron rated to 5000 psi.
- See page viii for ordering cartridge/body and seals. Pressure ratings, material specifications on page xiv.

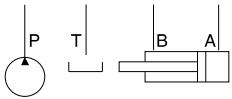
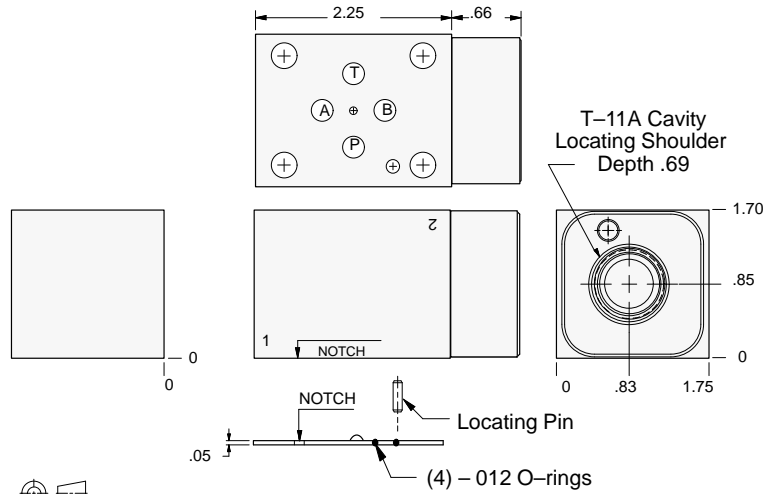
03 FLOW CONTROL



FUNCTION

Priority Flow on P

Flow Control Valves



ALUMINUM		DUCTILE IRON	
Model Code	List Price	Model Code	List Price
WBN		WBN/S	

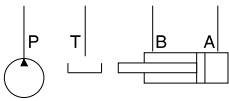
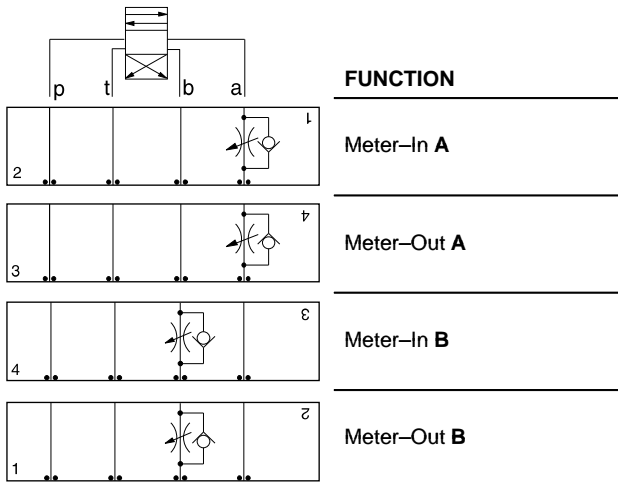
TYPICAL CARTRIDGES USED WITH BODIES SHOWN ABOVE			
	Priority Flow Control, Bypass/Restrictive, Fixed Orifice		
	FRCA Page 6.02		
OTHER VALVES:			



ISO 03 SANDWICH BODIES

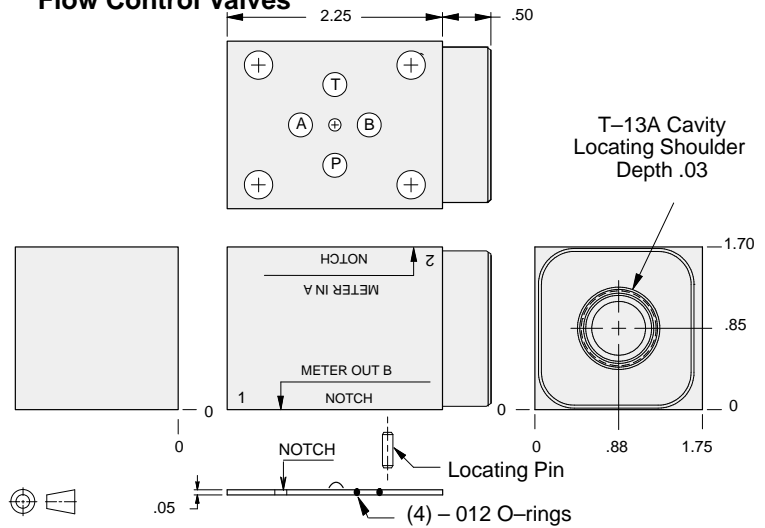


- Aluminum rated to 3000 psi and Ductile Iron rated to 5000 psi.
- See page viii for ordering cartridge/body and seals. Pressure ratings, material specifications on page xiv.



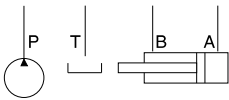
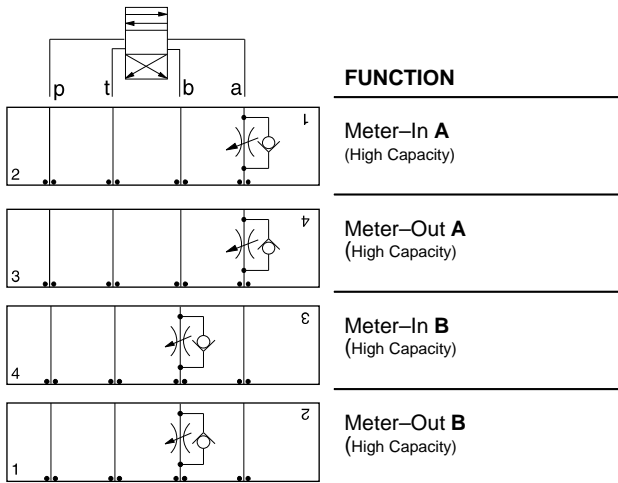
FUNCTION
Meter-In A
Meter-Out A
Meter-In B
Meter-Out B

Flow Control Valves



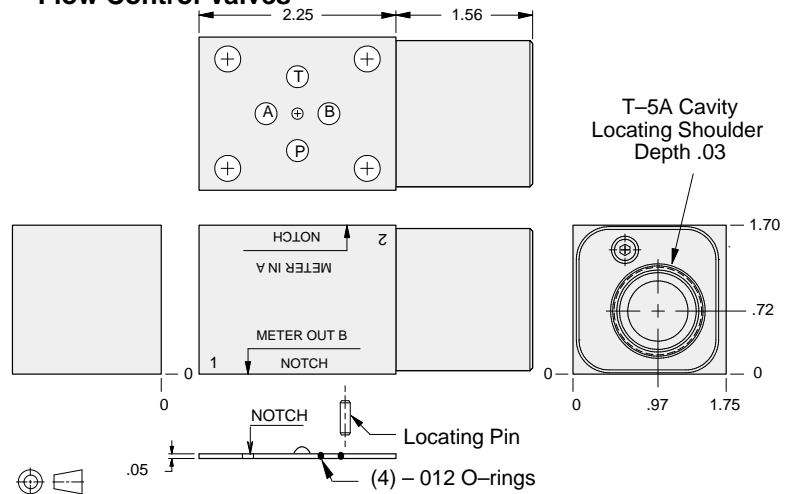
ALUMINUM		DUCTILE IRON	
Model Code	List Price	Model Code	List Price
GBA		GBA/S	

03 FLOW CONTROL



FUNCTION
Meter-In A (High Capacity)
Meter-Out A (High Capacity)
Meter-In B (High Capacity)
Meter-Out B (High Capacity)

Flow Control Valves



ALUMINUM		DUCTILE IRON	
Model Code	List Price	Model Code	List Price
GBD		GBD/S	

TYPICAL CARTRIDGES USED WITH BODIES SHOWN ABOVE			
	Fully Adjustable Needle Valve		Fixed Orifice, Pressure-Compensated Flow Control
	NF*C Page 5.12		FX*A Page 5.20
	Fully Adjustable Needle Valve with Reverse Free Flow Check		Fixed Orifice, Pressure-Compensated Flow Control with Reverse Free Flow Check
	NC*B Page 5.16		FC*B Page 5.22
	Fully Adjustable Needle Valve with Reverse Free Flow Check, Low Flow		Fully Adjustable, Pressure-Compensated Flow Control with Reverse Free Flow Check
	NC*C Page 5.18		FDBA, FDCB Page 5.24
OTHER VALVES:	CN*C		

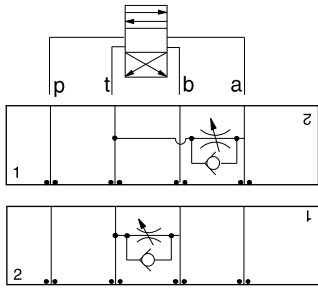


ISO 03 SANDWICH BODIES



- Aluminum rated to 3000 psi and Ductile Iron rated to 5000 psi.
- See page viii for ordering cartridge/body and seals. Pressure ratings, material specifications on page xiv.

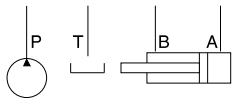
03 FLOW CONTROL



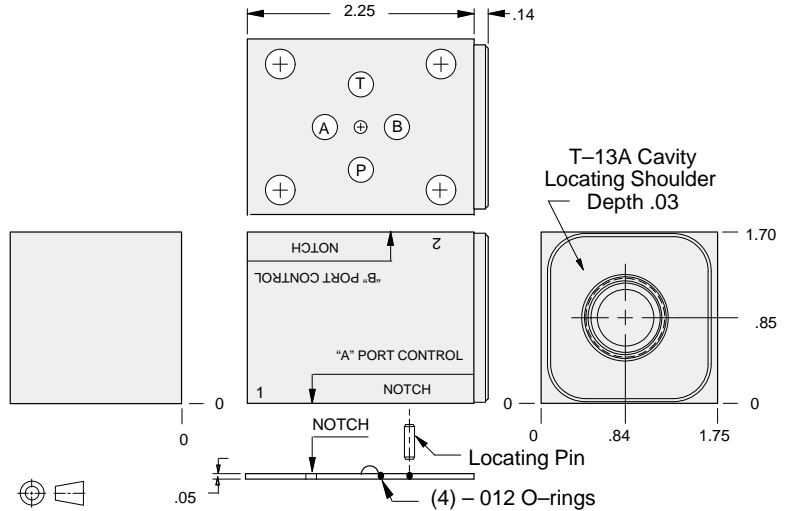
FUNCTION

Bleed-Off
A to T

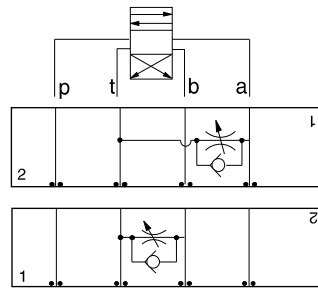
Bleed-Off
B to T



Flow Control Valves



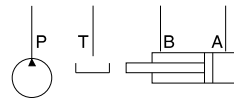
ALUMINUM		DUCTILE IRON	
Model Code	List Price	Model Code	List Price
GBW		GBW/S	



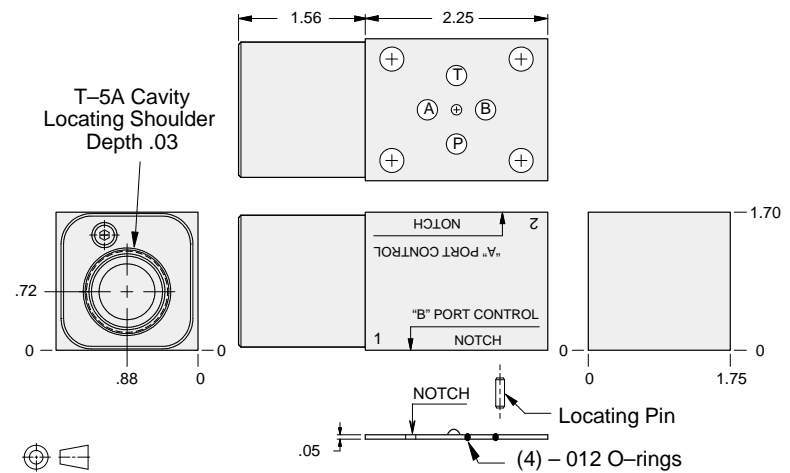
FUNCTION

Bleed-Off
A to T
(High Capacity)

Bleed-Off
B to T
(High Capacity)



Flow Control Valves



ALUMINUM		DUCTILE IRON	
Model Code	List Price	Model Code	List Price
GBE		GBE/S	

TYPICAL CARTRIDGES USED WITH BODIES SHOWN ABOVE

	Fully Adjustable Needle Valve		Fixed Orifice, Pressure-Compensated Flow Control
	NF*C Page 5.12		FX*A Page 5.20
	Fully Adjustable Needle Valve with Reverse Free Flow Check		Fixed Orifice, Pressure-Compensated Flow Control with Reverse Free Flow Check
	NC*B Page 5.16		FC*B Page 5.22
	Fully Adjustable Needle Valve with Reverse Free Flow Check, Low Flow		Fully Adjustable, Pressure-Compensated Flow Control with Reverse Free Flow Check
	NC*C Page 5.18		FDBA, FDCB Page 5.24
OTHER VALVES:	CNCC, CNEC		

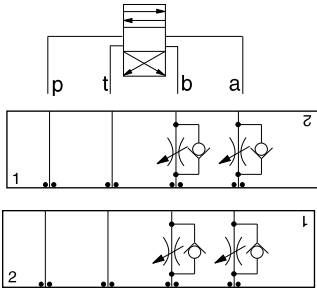


ISO 03 SANDWICH BODIES



- Aluminum rated to 3000 psi and Ductile Iron rated to 5000 psi.
- See page viii for ordering cartridge/body and seals. Pressure ratings, material specifications on page xiv.

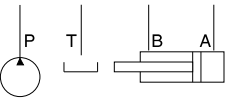
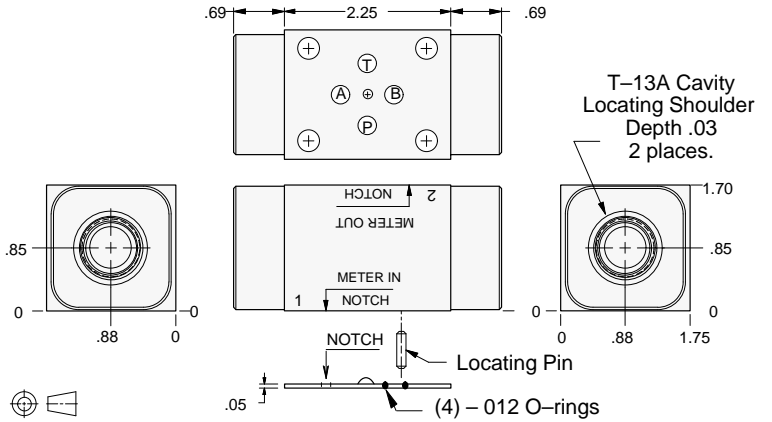
Flow Control Valves



FUNCTION

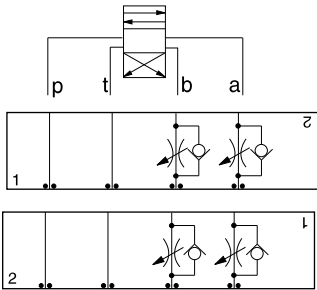
Meter-In
A and B

Meter-Out
A and B



ALUMINUM		DUCTILE IRON	
Model Code	List Price	Model Code	List Price
GBY		GBY/S	

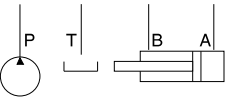
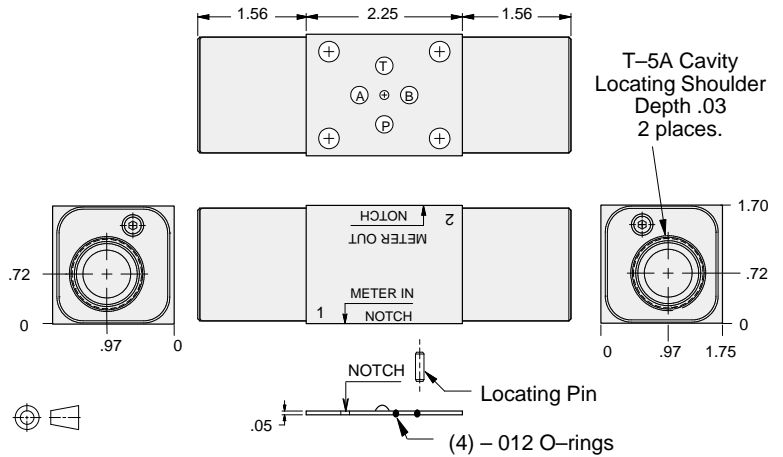
Flow Control Valves



FUNCTION

Meter-In
A and B
(High Capacity)

Meter-Out
A and B
(High Capacity)



ALUMINUM		DUCTILE IRON	
Model Code	List Price	Model Code	List Price
GBZ		GBZ/S	

TYPICAL CARTRIDGES USED WITH BODIES SHOWN ABOVE

	Fully Adjustable Needle Valve		Fixed Orifice, Pressure-Compensated Flow Control
	NF*C Page 5.12		FX*A Page 5.20
	Fully Adjustable Needle Valve with Reverse Free Flow Check		Fixed Orifice, Pressure-Compensated Flow Control with Reverse Free Flow Check
	NC*B Page 5.16		FC*B Page 5.22
	Fully Adjustable Needle Valve with Reverse Free Flow Check, Low Flow		Fully Adjustable, Pressure-Compensated Flow Control with Reverse Free Flow Check
	NC*C Page 5.18		FDBA, FDCB Page 5.24
OTHER VALVES:	CNCC, CNEC		

03 FLOW CONTROL

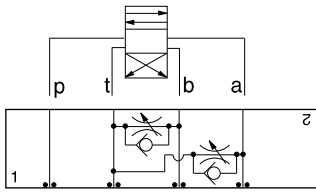


ISO 03 SANDWICH BODIES



- Aluminum rated to 3000 psi and Ductile Iron rated to 5000 psi.
- See page viii for ordering cartridge/body and seals. Pressure ratings, material specifications on page xiv.

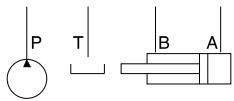
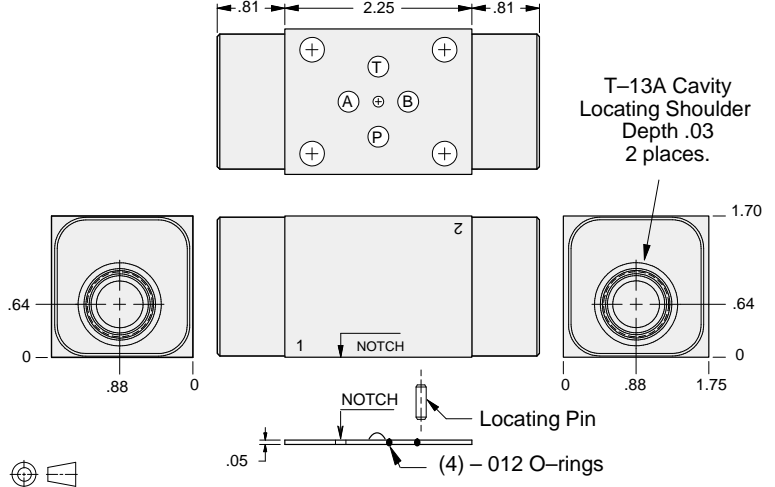
03 FLOW CONTROL



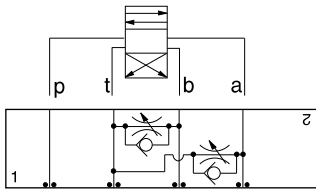
FUNCTION

Bleed-Off
A and B to T

Flow Control Valves



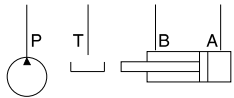
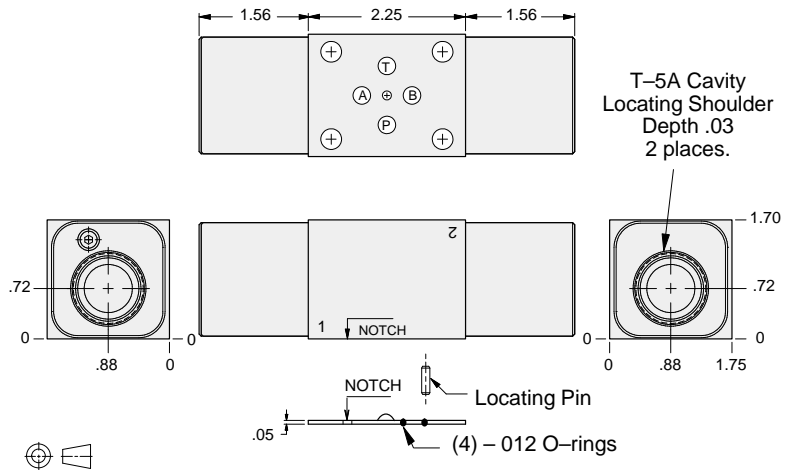
ALUMINUM		DUCTILE IRON	
Model Code	List Price	Model Code	List Price
GBX		GBX/S	



FUNCTION

Bleed-Off
A and B to T
(High Capacity)

Flow Control Valves



ALUMINUM		DUCTILE IRON	
Model Code	List Price	Model Code	List Price
GBF		GBF/S	

TYPICAL CARTRIDGES USED WITH BODIES SHOWN ABOVE

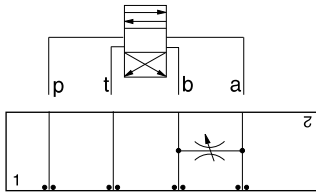
	Fully Adjustable Needle Valve		Fixed Orifice, Pressure-Compensated Flow Control
	NF*C Page 5.12		FX*A Page 5.20
	Fully Adjustable Needle Valve with Reverse Free Flow Check		Fixed Orifice, Pressure-Compensated Flow Control with Reverse Free Flow Check
	NC*B Page 5.15		FC*B Page 5.22
	Fully Adjustable Needle Valve with Reverse Free Flow Check, Low Flow		Fully Adjustable, Pressure-Compensated Flow Control with Reverse Free Flow Check
	NC*C Page 5.18		FDBA, FDCB Page 5.24
OTHER VALVES:	CNCC, CNEC		



ISO 03 SANDWICH BODIES



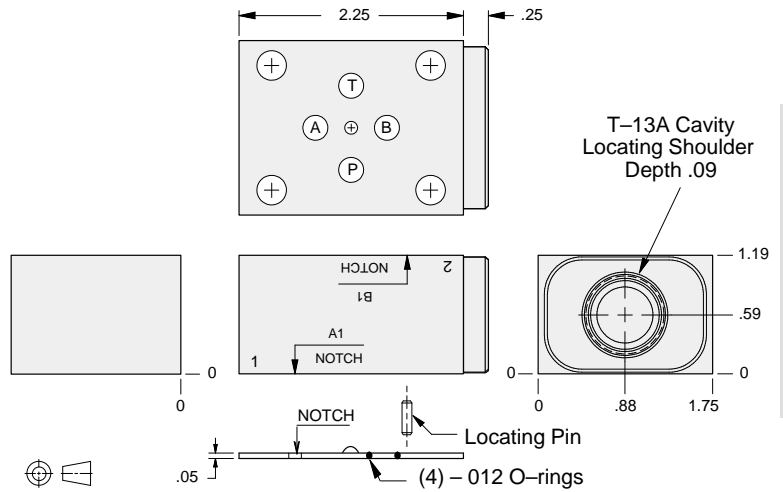
- Aluminum rated to 3000 psi and Ductile Iron rated to 5000 psi.
- See page viii for ordering cartridge/body and seals. Pressure ratings, material specifications on page xiv.



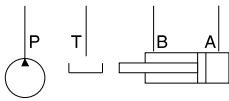
FUNCTION

Bleed-Off
A to B and
B to A

Flow Control Valves



03 FLOW CONTROL



ALUMINUM		DUCTILE IRON	
Model Code	List Price	Model Code	List Price
GBS		GBS/S	

TYPICAL CARTRIDGES USED WITH BODIES SHOWN ABOVE			
	Fully Adjustable Needle Valve		
	NFCC Page 5.12		
	Fixed Orifice, Pressure-Compensated Flow Control		
	FXCA Page 5.20		
OTHER VALVES:			