

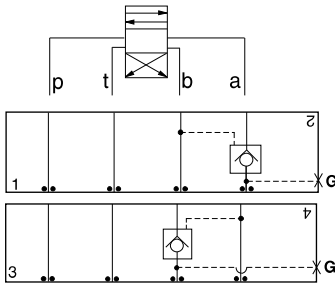


# ISO 03 SANDWICH BODIES



- Aluminum rated to 3000 psi and Ductile Iron rated to 5000 psi.
- See page viii for ordering cartridge/body and seals. Pressure ratings, material specifications on page xiv.

03 P.O. CHECK

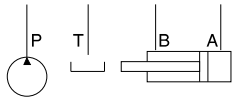
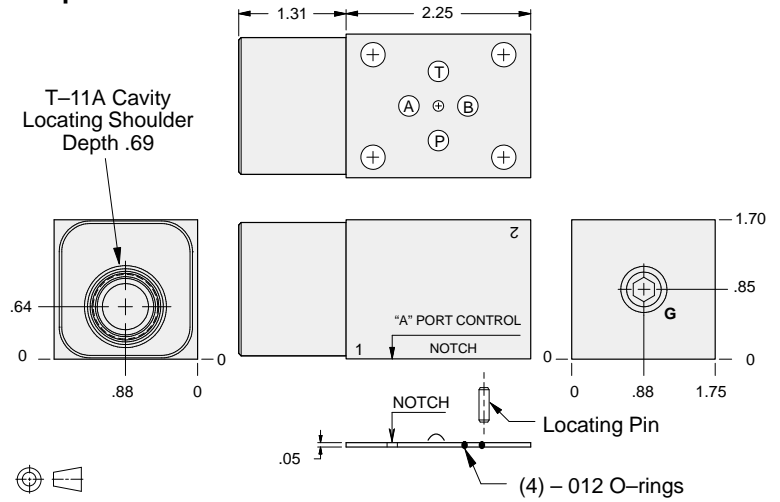


### FUNCTION

On A  
Pilot from B

On B  
Pilot from A

### Pilot Operated Check Valves



Gage Port (Plugged)	ALUMINUM		DUCTILE IRON	
	Model Code	List Price	Model Code	List Price
.25 NPTF	<b>EBA</b>		<b>EBA/S</b>	
.25 BSPP	<b>EBA/M</b>		<b>EBA/T</b>	

### TYPICAL CARTRIDGES USED WITH BODIES SHOWN ABOVE

	<i>Pilot-to-Open Check Valve, 3:1 Pilot Ratio</i>		
	<b>CKCB Page 4.16</b>		
<b>OTHER VALVES:</b>			

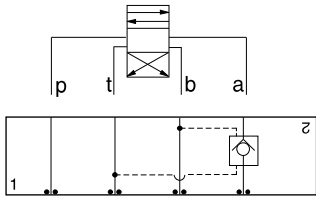


# ISO 03 SANDWICH BODIES



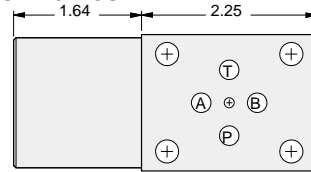
- Aluminum rated to 3000 psi and Ductile Iron rated to 5000 psi.
- See page viii for ordering cartridge/body and seals. Pressure ratings, material specifications on page xiv.

## Pilot Operated Check Valves

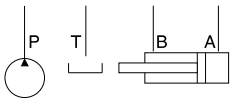
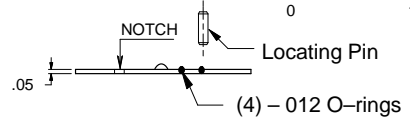
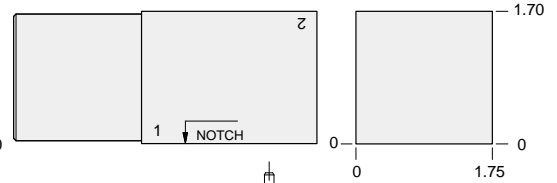
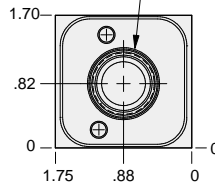


### FUNCTION

On **A**  
Pilot from **B**  
Vent to **T**

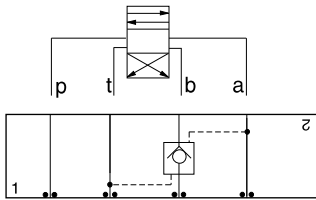


T-21A Cavity  
Locating Shoulder  
Depth 1.19



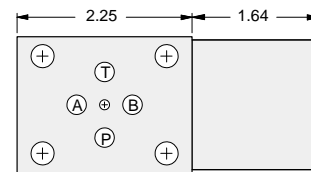
ALUMINUM		DUCTILE IRON	
Model Code	List Price	Model Code	List Price
<b>MBA</b>		<b>MBA/S</b>	

## Pilot Operated Check Valves

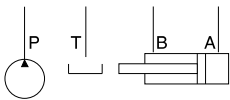
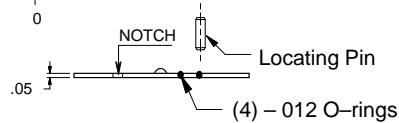
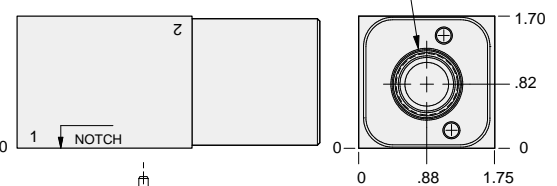
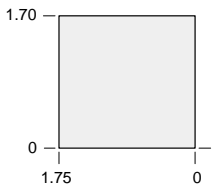


### FUNCTION

On **B**  
Pilot from **A**  
Vent to **T**



T-21A Cavity  
Locating Shoulder  
Depth 1.19



ALUMINUM		DUCTILE IRON	
Model Code	List Price	Model Code	List Price
<b>MBB</b>		<b>MBB/S</b>	

### TYPICAL CARTRIDGES USED WITH BODIES SHOWN ABOVE

	Vented Pilot-to-Open Check Valve, 3:1 Pilot Ratio		
	<b>CVCV Page 4.22</b>		
<b>OTHER VALVES:</b>			

03 P.O. CHECK

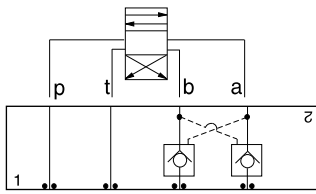


# ISO 03 SANDWICH BODIES



- Aluminum rated to 3000 psi and Ductile Iron rated to 5000 psi.
- See page viii for ordering cartridge/body and seals. Pressure ratings, material specifications on page xiv.

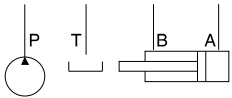
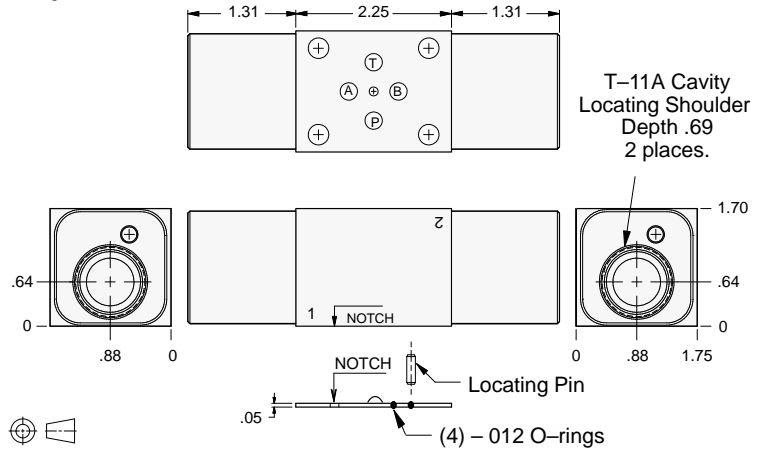
03 P.O. CHECK



### FUNCTION

On A and B  
Cross-Piloted

### Pilot Operated Check Valves



ALUMINUM		DUCTILE IRON	
Model Code	List Price	Model Code	List Price
<b>EBY</b>		<b>EBY/S</b>	

### TYPICAL CARTRIDGES USED WITH BODIES SHOWN ABOVE

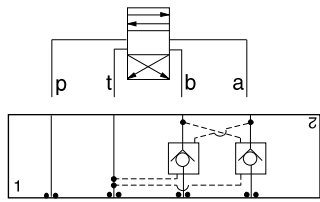
	<i>Pilot-to-Open Check Valve, 3:1 Pilot Ratio</i>		
	<b>CKCB Page 4.16</b>		
<b>OTHER VALVES:</b>			



# ISO 03 SANDWICH BODIES



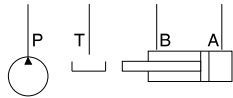
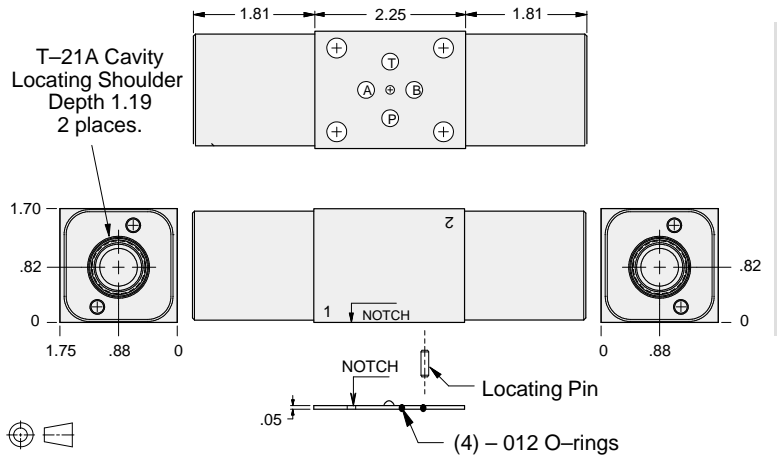
- Aluminum rated to 3000 psi and Ductile Iron rated to 5000 psi.
- See page viii for ordering cartridge/body and seals. Pressure ratings, material specifications on page xiv.



**FUNCTION**

On **A** and **B**  
Cross-Piloted  
Vents to **T**

## Pilot Operated Check Valves



ALUMINUM		DUCTILE IRON	
Model Code	List Price	Model Code	List Price
<b>MBY</b>		<b>MBY/S</b>	

03 P.O. CHECK

TYPICAL CARTRIDGES USED WITH BODIES SHOWN ABOVE			
	Vented Pilot-to-Open Check Valve, 3:1 Pilot Ratio		
	<b>CVCV Page 4.22</b>		
<b>OTHER VALVES:</b>			