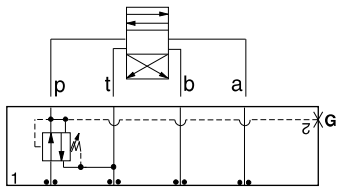




ISO 03 SANDWICH BODIES



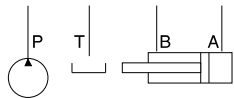
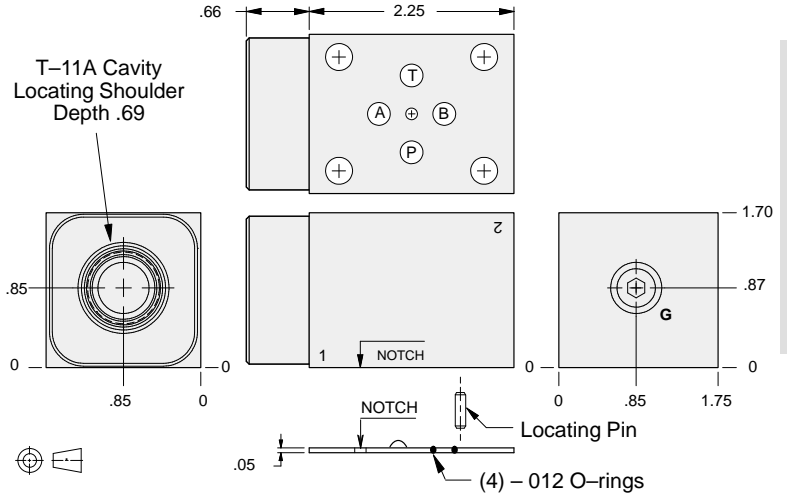
- Aluminum rated to 3000 psi and Ductile Iron rated to 5000 psi.
- See page viii for ordering cartridge/body and seals. Pressure ratings, material specifications on page xiv.



FUNCTION

On P Tank to T
Drained to T

Reducing/Relieving Valves



Gage Port (Plugged)	ALUMINUM		DUCTILE IRON	
	Model Code	List Price	Model Code	List Price
.25 NPTF	EBP		EBP/S	
.25 BSPP	EBP/M		EBP/T	

03 REDUCING/RELIEVING

TYPICAL CARTRIDGES USED WITH BODIES SHOWN ABOVE

	Pilot Operated Reducing/Relieving Valve		
	PPDB Page 3.10		
OTHER VALVES:			

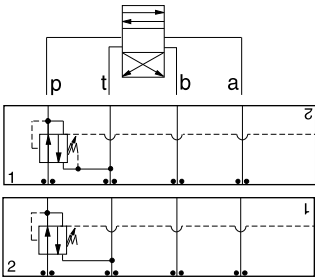


ISO 03 SANDWICH BODIES



- Aluminum rated to 3000 psi and Ductile Iron rated to 5000 psi.
- See page viii for ordering cartridge/body and seals. Pressure ratings, material specifications on page xiv.

03 REDUCING/RELIEVING

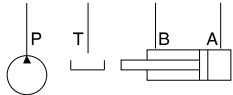
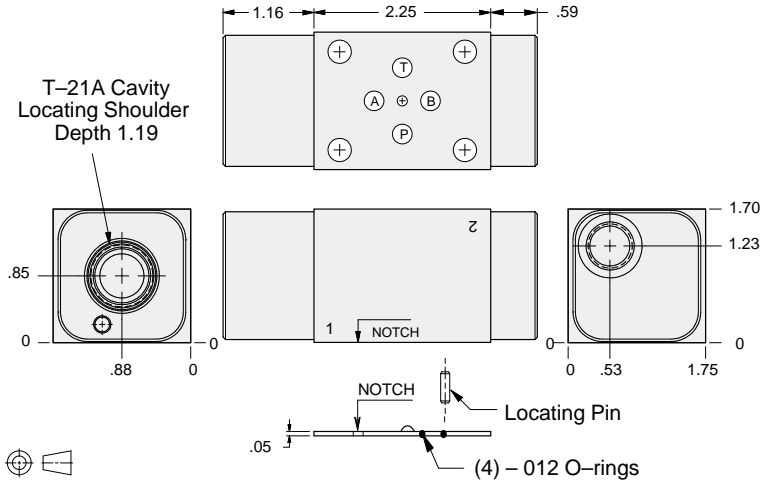


FUNCTION

On P Tank to T
Vented Externally

On P Tank to T
Drained Externally

Reducing/Relieving Valves



External Port	ALUMINUM		DUCTILE IRON	
	Model Code	List Price	Model Code	List Price
SAE-6	MBP		MBP/S	
.25 BSPP	MBP/M		MBP/T	

TYPICAL CARTRIDGES USED WITH BODIES SHOWN ABOVE

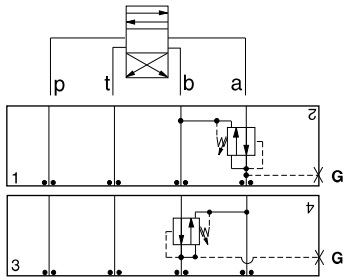
	Pilot Operated Reducing/Relieving Valve with Drain Port		
	PVDA Page 3.14		
	Pilot Operated Reducing/Relieving Valve with Vent Port		
	PVDB Page 3.16		
OTHER VALVES:			



ISO 03 SANDWICH BODIES



- Aluminum rated to 3000 psi and Ductile Iron rated to 5000 psi.
- See page viii for ordering cartridge/body and seals. Pressure ratings, material specifications on page xiv.

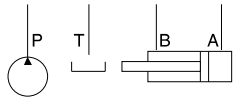
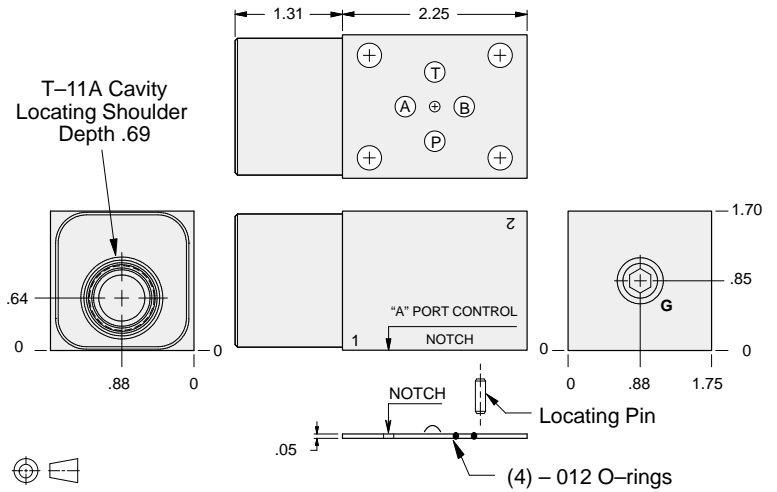


FUNCTION

On A Tank to B
Drained to B

On B Tank to A
Drained to A

Reducing/Relieving Valves



Gage Port (Plugged)	ALUMINUM		DUCTILE IRON	
	Model Code	List Price	Model Code	List Price
.25 NPTF	EBA		EBA/S	
.25 BSPP	EBA/M		EBA/T	

03 REDUCING/RELIEVING

TYPICAL CARTRIDGES USED WITH BODIES SHOWN ABOVE

	Pilot Operated Reducing/Relieving Valve		
	PPDD Page 3.10		
OTHER VALVES:			

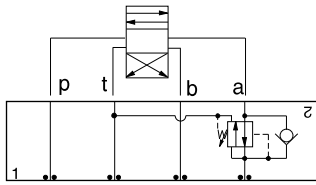


ISO 03 SANDWICH BODIES



- Aluminum rated to 3000 psi and Ductile Iron rated to 5000 psi.
- See page viii for ordering cartridge/body and seals. Pressure ratings, material specifications on page xiv.

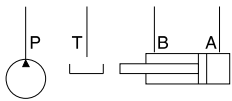
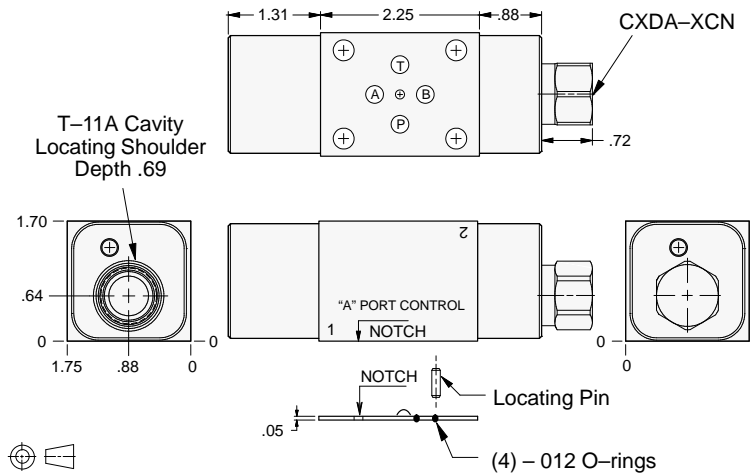
03 REDUCING/RELIEVING



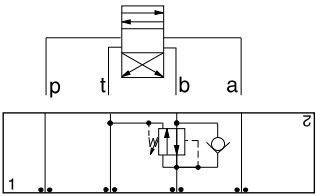
FUNCTION

On A Tank to T
Drained to T
Reverse FF Check

Reducing/Relieving Valves



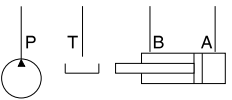
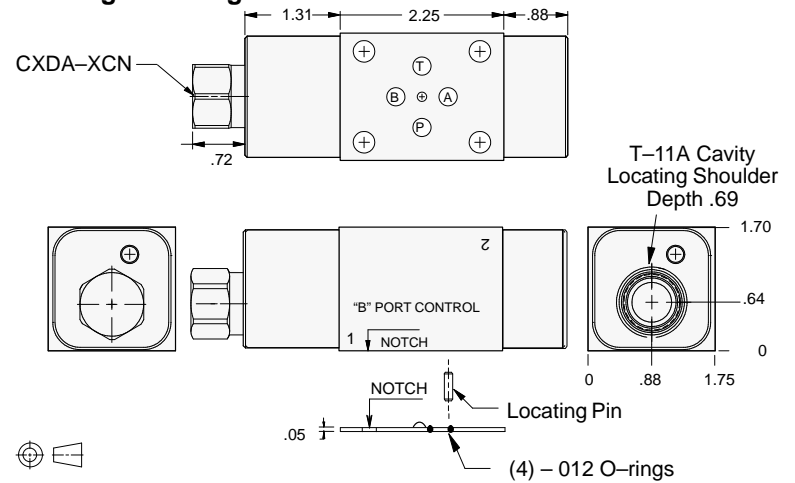
ALUMINUM		DUCTILE IRON	
Model Code	List Price	Model Code	List Price
EB2		EB2/S	



FUNCTION

On B Tank to T
Drained to T
Reverse FF Check

Reducing/Relieving Valves



ALUMINUM		DUCTILE IRON	
Model Code	List Price	Model Code	List Price
EB3		EB3/S	

TYPICAL CARTRIDGES USED WITH BODIES SHOWN ABOVE

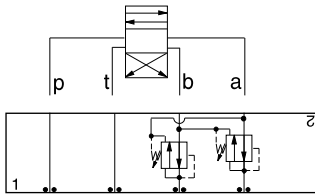
	Pilot Operated Reducing/Relieving Valve		
	PPDD Page 3.10		
OTHER VALVES:			



ISO 03 SANDWICH BODIES



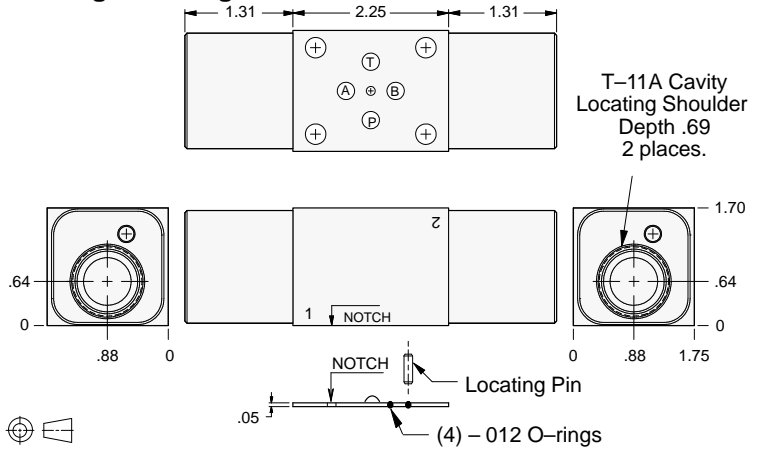
- Aluminum rated to 3000 psi and Ductile Iron rated to 5000 psi.
- See page viii for ordering cartridge/body and seals. Pressure ratings, material specifications on page xiv.



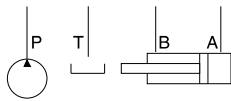
FUNCTION

On **A** and **B**
Tanks and Drains to
Opposite Port

Reducing/Relieving Valves



03 REDUCING/RELIEVING



ALUMINUM		DUCTILE IRON	
Model Code	List Price	Model Code	List Price
EBY		EBY/S	

TYPICAL CARTRIDGES USED WITH BODIES SHOWN ABOVE			
	Pilot Operated Reducing/Relieving Valve		
	PPDB Page 3.10		
OTHER VALVES:			