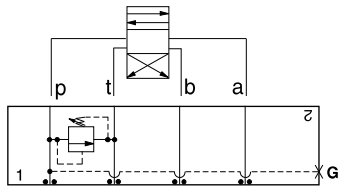




# ISO 03 SANDWICH BODIES



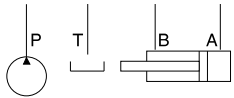
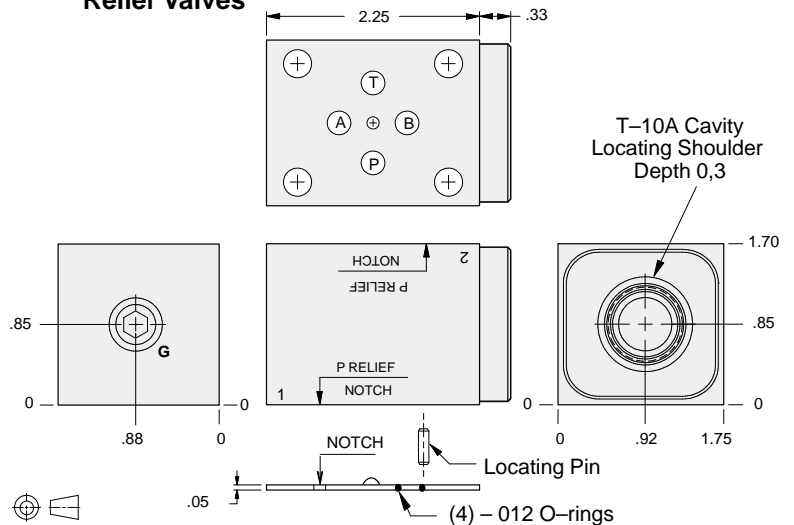
- Aluminum rated to 3000 psi and Ductile Iron rated to 5000 psi.
- See page viii for ordering cartridge/body and seals. Pressure ratings, material specifications on page xiv.



### FUNCTION

P to T  
(High Capacity)

### Relief Valves



Gage Port (Plugged)	ALUMINUM		DUCTILE IRON	
	Model Code	List Price	Model Code	List Price
.25 NPTF	<b>FBP</b>		<b>FBP/S</b>	
.25 BSPP	<b>FBP/M</b>		<b>FBP/T</b>	

### TYPICAL CARTRIDGES USED WITH BODIES SHOWN ABOVE

Cartridge Diagram	Valve Type	Page Reference
	Pilot Operated Relief Valve	RPEC Page 1.06
	Pilot Operated, Rapid Response Relief Valve	RPEE Page 1.08
	Direct Acting Relief Valve	RDDA Page 1.10
OTHER VALVES:		

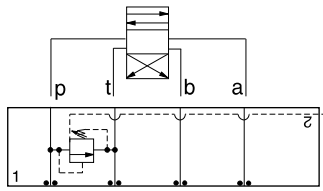


# ISO 03 SANDWICH BODIES



- Aluminum rated to 3000 psi and Ductile Iron rated to 5000 psi.
- See page viii for ordering cartridge/body and seals. Pressure ratings, material specifications on page xiv.

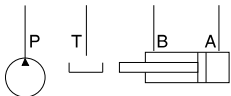
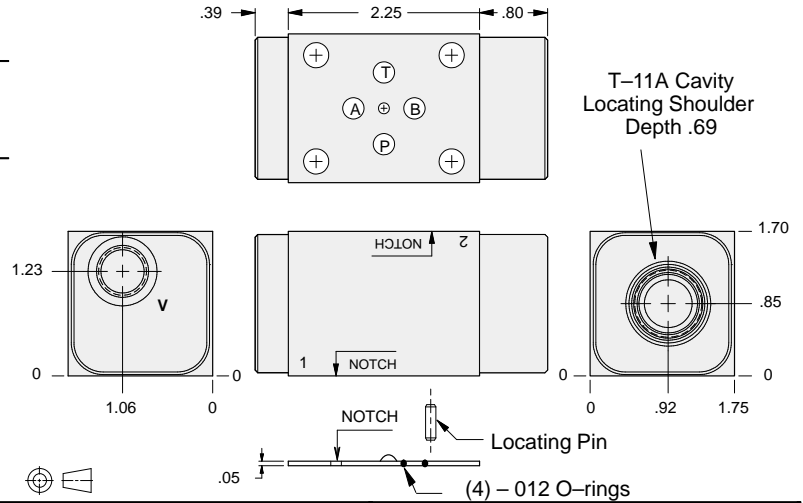
03 RELIEF



### FUNCTION

**P to T**  
Externally Vented

### Relief Valves



Vent Port	ALUMINUM		DUCTILE IRON	
	Model Code	List Price	Model Code	List Price
SAE-6	<b>EBC</b>		<b>EBC/S</b>	
.25 BSPP	<b>EBC/M</b>		<b>EBC/T</b>	

### TYPICAL CARTRIDGES USED WITH BODIES SHOWN ABOVE

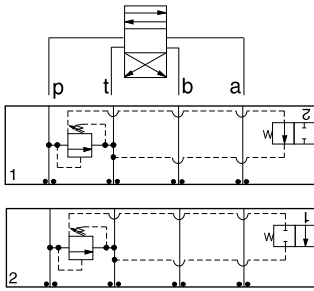
	Pilot Operated Vented Relief Valve		
	RVCA Page 1.18		
<b>OTHER VALVES:</b>			



# ISO 03 SANDWICH BODIES



- Aluminum rated to 3000 psi and Ductile Iron rated to 5000 psi.
- See page viii for ordering cartridge/body and seals. Pressure ratings, material specifications on page xiv.

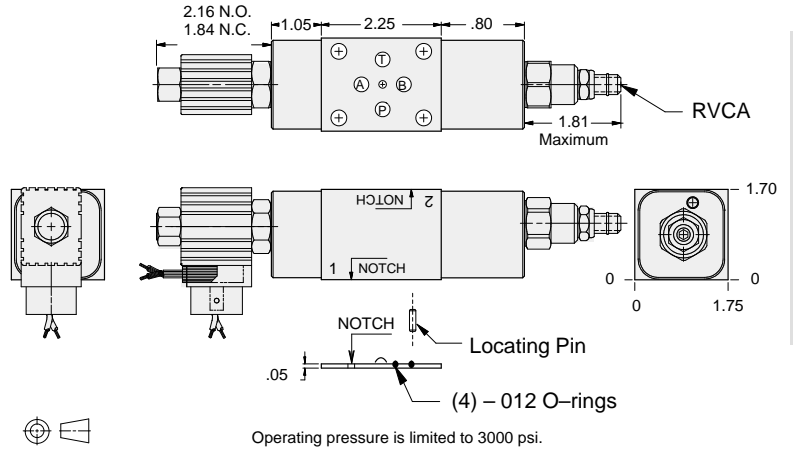


### FUNCTION

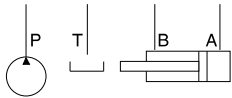
**P to T**  
N.O. Solenoid  
Vented \*

**P to T**  
N.C. Solenoid  
Vented \*

### Relief Valves



03 RELIEF



Solenoid Type	ALUMINUM		DUCTILE IRON	
	Model Code	List Price	Model Code	List Price
N.O.	YRCO-LAN-*A		YRCO-LAN-*A/S	
N.C.	YRCP-LAN-*A		YRCP-LAN-*A/S	

\* Select solenoid connection/voltage option from page 14.16 and add option price to List Price.

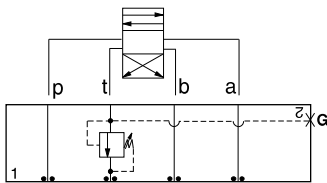


# ISO 03 SANDWICH BODIES



- Aluminum rated to 3000 psi and Ductile Iron rated to 5000 psi.
- See page viii for ordering cartridge/body and seals. Pressure ratings, material specifications on page xiv.

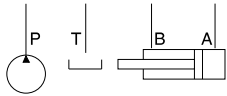
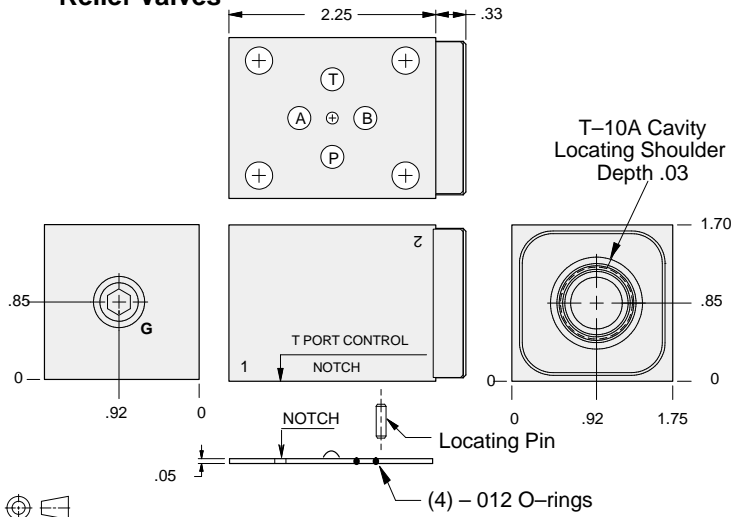
03 RELIEF



### FUNCTION

Out of T  
(High Capacity)

### Relief Valves



Gage Port (Plugged)	ALUMINUM		DUCTILE IRON	
	Model Code	List Price	Model Code	List Price
.25 NPTF	<b>FBT</b>		<b>FBT/S</b>	
.25 BSPP	<b>FBT/M</b>		<b>FBT/T</b>	

### TYPICAL CARTRIDGES USED WITH BODIES SHOWN ABOVE

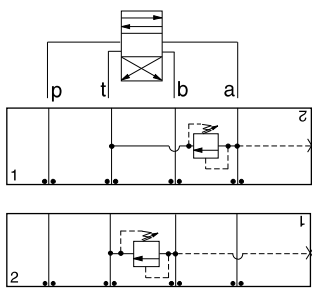
	<i>Pilot Operated Relief Valve</i>		<i>Pilot Operated "Kick-Down" Relief Valve</i>
	<b>RPEC Page 1.06</b>		<b>RQEB Page 1.12</b>
	<i>Pilot Operated, Rapid Response Relief Valve</i>		
	<b>RPEE Page 1.08</b>		
	<i>Direct Acting Relief Valve</i>		
	<b>RDDA Page 1.10</b>		
<b>OTHER VALVES:</b>			



# ISO 03 SANDWICH BODIES



- Aluminum rated to 3000 psi and Ductile Iron rated to 5000 psi.
- See page viii for ordering cartridge/body and seals. Pressure ratings, material specifications on page xiv.

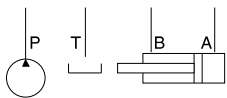
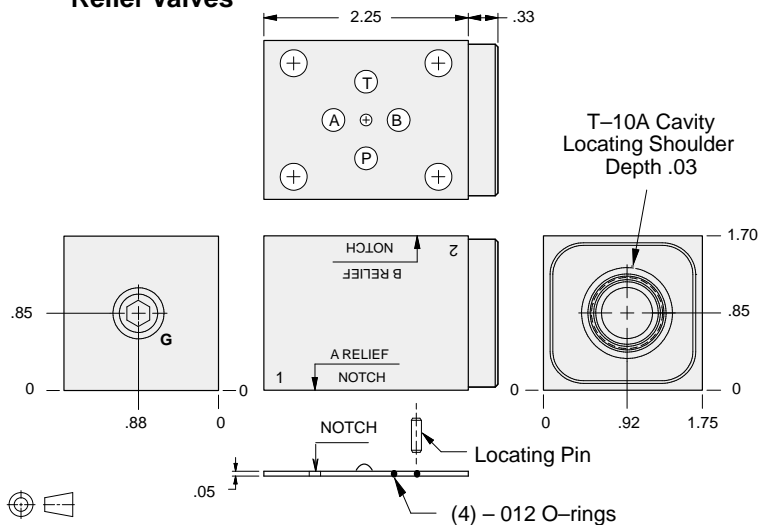


### FUNCTION

**A to T**  
(High Capacity)

**B to T**  
(High Capacity)

### Relief Valves



Gage Port (Plugged)	ALUMINUM		DUCTILE IRON	
	Model Code	List Price	Model Code	List Price
.25 NPTF	<b>FBA</b>		<b>FBA/S</b>	
.25 BSPP	<b>FBA/M</b>		<b>FBA/T</b>	

### TYPICAL CARTRIDGES USED WITH BODIES SHOWN ABOVE

	<i>Pilot Operated Relief Valve</i>		<i>Pilot Operated "Kick-Down" Relief Valve</i>
	<b>RPEC Page 1.06</b>		<b>RQEB Page 1.12</b>
	<i>Pilot Operated, Rapid Response Relief Valve</i>		
	<b>RPEE Page 1.08</b>		
	<i>Direct Acting Relief Valve</i>		
	<b>RDDA Page 1.10</b>		
<b>OTHER VALVES:</b>			

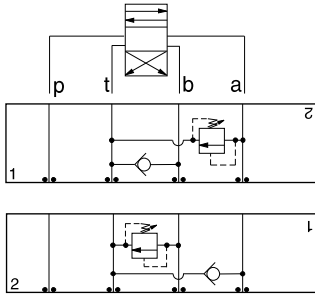


# ISO 03 SANDWICH BODIES



- Aluminum rated to 3000 psi and Ductile Iron rated to 5000 psi.
- See page viii for ordering cartridge/body and seals. Pressure ratings, material specifications on page xiv.

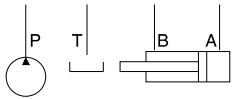
03 RELIEF



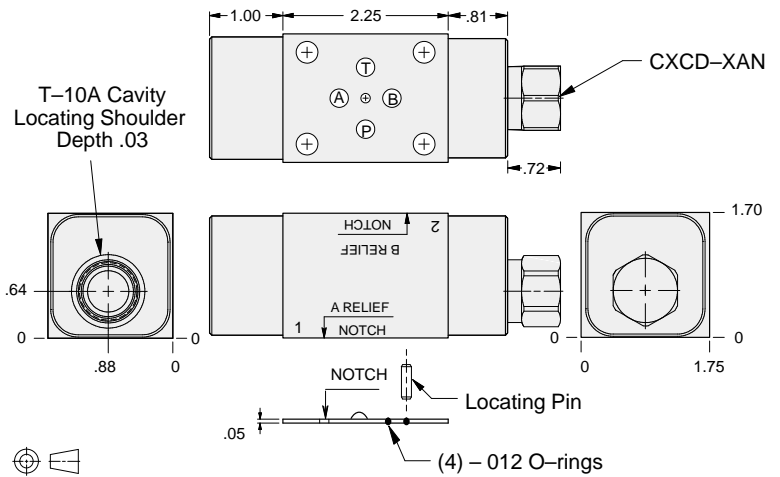
### FUNCTION

**A to T**  
FF Check T to B

**B to T**  
FF Check T to A



### Relief Valves



ALUMINUM		DUCTILE IRON	
Model Code	List Price	Model Code	List Price
<b>FB2</b>		<b>FB2/S</b>	

### TYPICAL CARTRIDGES USED WITH BODIES SHOWN ABOVE

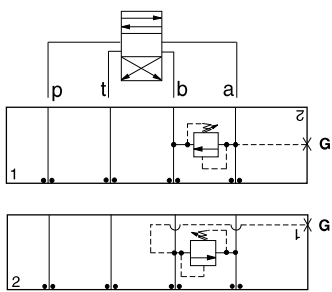
	<i>Pilot Operated Relief Valve</i>		<i>Pilot Operated "Kick-Down" Relief Valve</i>
	<b>RPEC Page 1.06</b>		<b>RQEB Page 1.12</b>
	<i>Pilot Operated, Rapid Response Relief Valve</i>		
	<b>RPEE Page 1.08</b>		
	<i>Direct Acting Relief Valve</i>		
	<b>RDDA Page 1.10</b>		
<b>OTHER VALVES:</b>			



# ISO 03 SANDWICH BODIES



- Aluminum rated to 3000 psi and Ductile Iron rated to 5000 psi.
- See page viii for ordering cartridge/body and seals. Pressure ratings, material specifications on page xiv.

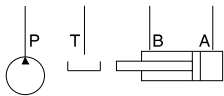
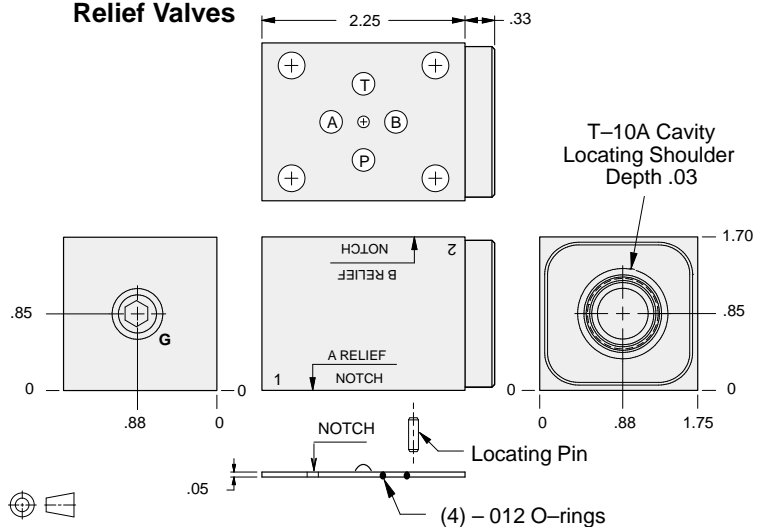


### FUNCTION

**A to B**  
(High Capacity)

**B to A**  
(High Capacity)

### Relief Valves



Gage Port (Plugged)	ALUMINUM		DUCTILE IRON	
	Model Code	List Price	Model Code	List Price
.25 NPTF	<b>FBC</b>		<b>FBC/S</b>	
.25 BSPP	<b>FBC/M</b>		<b>FBC/T</b>	

TYPICAL CARTRIDGES USED WITH BODIES SHOWN ABOVE			
	Pilot Operated Relief Valve		Pilot Operated "Kick-Down" Relief Valve
	RPEC Page 1.06		RQEB Page 1.12
	Pilot Operated, Rapid Response Relief Valve		
	RPEE Page 1.08		
	Direct Acting Relief Valve		
	RDDA Page 1.10		
OTHER VALVES:			

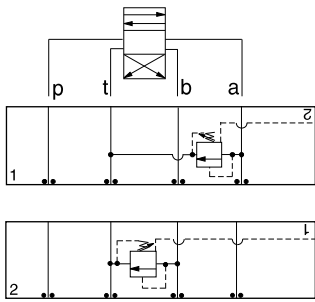


# ISO 03 SANDWICH BODIES



- Aluminum rated to 3000 psi and Ductile Iron rated to 5000 psi.
- See page viii for ordering cartridge/body and seals. Pressure ratings, material specifications on page xiv.

03 RELIEF

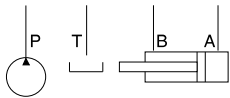
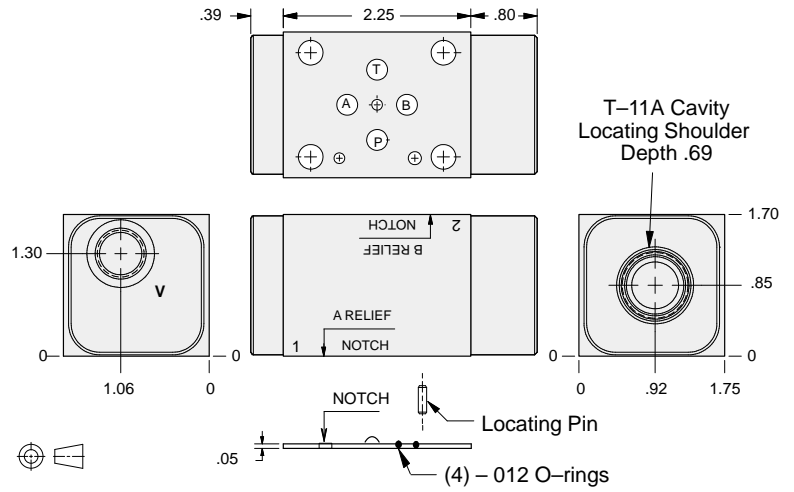


### FUNCTION

**A to T**  
Externally Vented

**B to T**  
Externally Vented

### Relief Valves



Vent Port	ALUMINUM		DUCTILE IRON	
	Model Code	List Price	Model Code	List Price
SAE-6	<b>EBI</b>		<b>EBI/S</b>	
.25 BSPP	<b>EBI/M</b>		<b>EBI/T</b>	

### TYPICAL CARTRIDGES USED WITH BODIES SHOWN ABOVE

	<i>Pilot Operated Vented Relief Valve</i>		
	<b>RVCA Page 1.18</b>		
<b>OTHER VALVES:</b>			

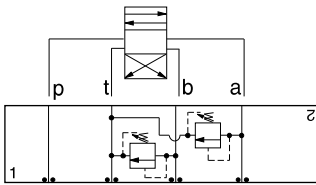




# ISO 03 SANDWICH BODIES



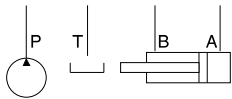
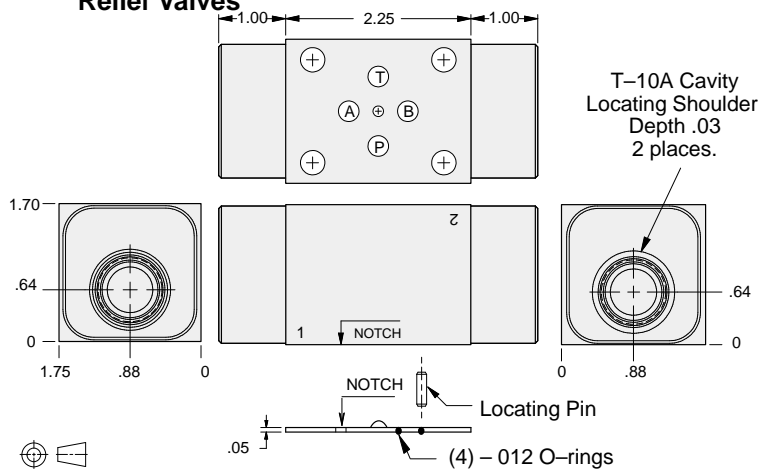
- Aluminum rated to 3000 psi and Ductile Iron rated to 5000 psi.
- See page viii for ordering cartridge/body and seals. Pressure ratings, material specifications on page xiv.



### FUNCTION

**A and B to T**  
(High Capacity)

### Relief Valves



ALUMINUM		DUCTILE IRON	
Model Code	List Price	Model Code	List Price
<b>FBX</b>		<b>FBX/S</b>	

### TYPICAL CARTRIDGES USED WITH BODIES SHOWN ABOVE

	<i>Pilot Operated Relief Valve</i>		<i>Pilot Operated "Kick-Down" Relief Valve</i>
	<b>RPEC Page 1.06</b>		<b>RQEB Page 1.12</b>
	<i>Pilot Operated, Rapid Response Relief Valve</i>		
	<b>RPEE Page 1.08</b>		
	<i>Direct Acting Relief Valve</i>		
	<b>RDDA Page 1.10</b>		
<b>OTHER VALVES:</b>			

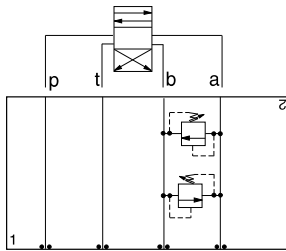


# ISO 03 SANDWICH BODIES



- Aluminum rated to 3000 psi and Ductile Iron rated to 5000 psi.
- See page viii for ordering cartridge/body and seals. Pressure ratings, material specifications on page xiv.

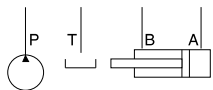
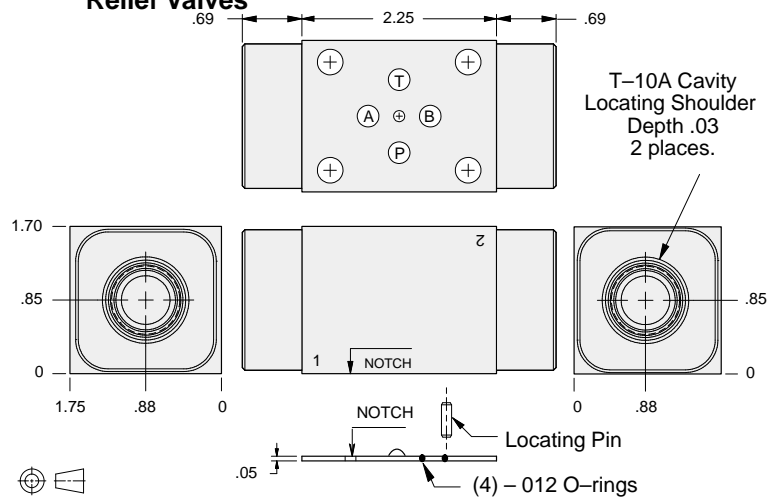
03 RELIEF



### FUNCTION

**A to B and B to A**  
(High Capacity)  
(Cross-Port)

### Relief Valves



ALUMINUM		DUCTILE IRON	
Model Code	List Price	Model Code	List Price
<b>FBY</b>		<b>FBY/S</b>	

### TYPICAL CARTRIDGES USED WITH BODIES SHOWN ABOVE

	<i>Pilot Operated Relief Valve</i>		<i>Pilot Operated "Kick-Down" Relief Valve</i>
	<b>RPEC Page 1.06</b>		<b>RQEB Page 1.12</b>
	<i>Pilot Operated, Rapid Response Relief Valve</i>		
	<b>RPEE Page 1.08</b>		
	<i>Direct Acting Relief Valve</i>		
	<b>RDDA Page 1.10</b>		
<b>OTHER VALVES:</b>			