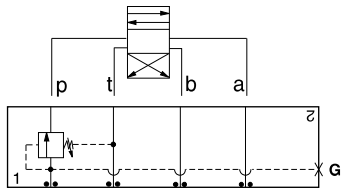




ISO 03 SANDWICH BODIES



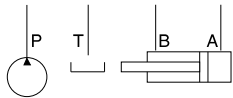
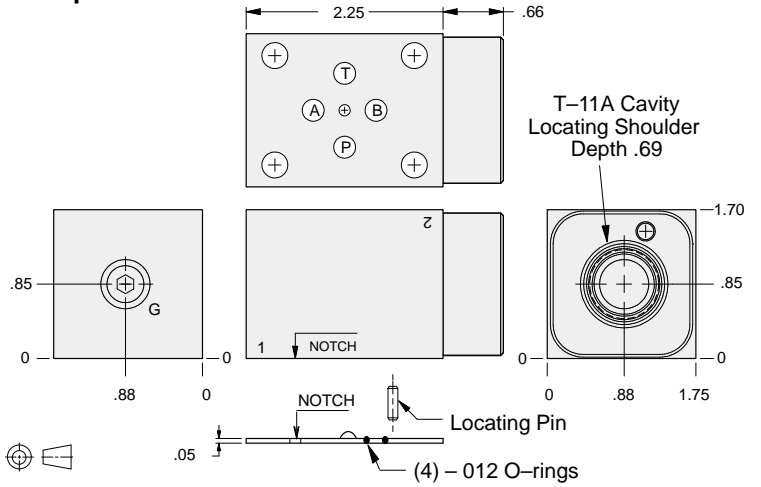
- Aluminum rated to 3000 psi and Ductile Iron rated to 5000 psi.
- See page viii for ordering cartridge/body and seals. Pressure ratings, material specifications on page xiv.



FUNCTION

In to P

Sequence Valves



Gage Port (Plugged)	ALUMINUM		DUCTILE IRON	
	Model Code	List Price	Model Code	List Price
.25 NPTF	EBW		EBW/S	
.25 BSPP	EBW/M		EBW/T	

03 SEQUENCE

TYPICAL CARTRIDGES USED WITH BODIES SHOWN ABOVE

	<i>Pilot Operated Sequence Valve</i>		
	RSDC Page 2.06		
	<i>Pilot Operated "Kick-Down" Sequence Valve</i>		
	SQDB Page 2.08		
	<i>Direct Acting Sequence Valve with Reverse Free Flow Check</i>		
	SCCA Page 2.12		
OTHER VALVES:			

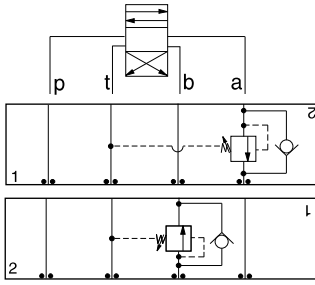


ISO 03 SANDWICH BODIES



- Aluminum rated to 3000 psi and Ductile Iron rated to 5000 psi.
- See page viii for ordering cartridge/body and seals. Pressure ratings, material specifications on page xiv.

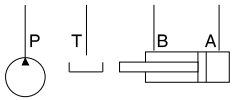
03 SEQUENCE



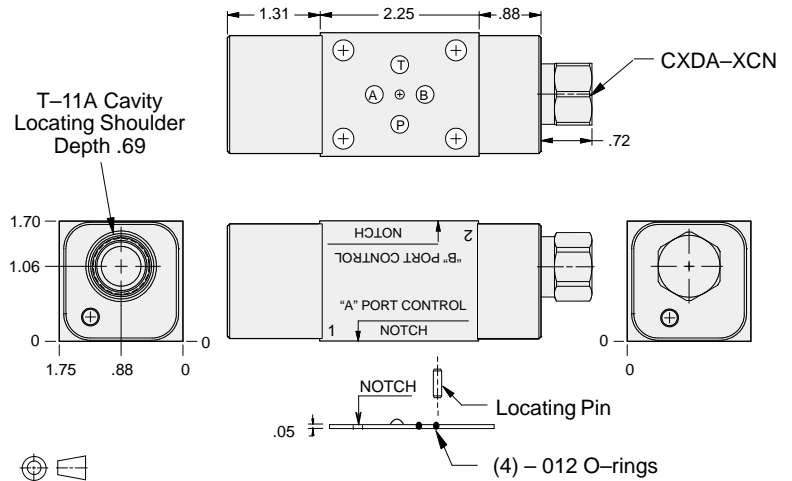
FUNCTION

In to A
Reverse FF Check

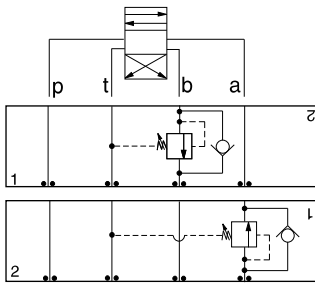
Out of B
Reverse FF Check



Sequence Valves



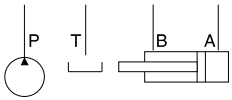
ALUMINUM		DUCTILE IRON	
Model Code	List Price	Model Code	List Price
EB4		EB4/S	



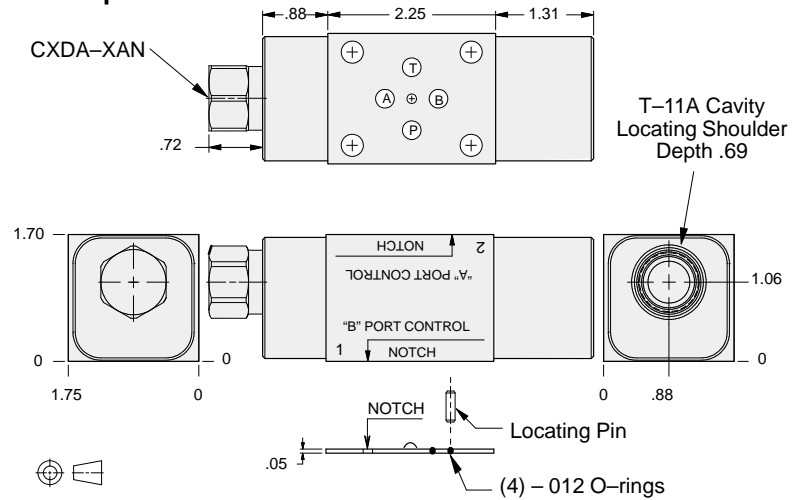
FUNCTION

In to B
Reverse FF Check

Out of A
Reverse FF Check



Sequence Valves



ALUMINUM		DUCTILE IRON	
Model Code	List Price	Model Code	List Price
EB5		EB5/S	

TYPICAL CARTRIDGES USED WITH BODIES SHOWN ABOVE

	Pilot Operated Sequence Valve		
	RSDC Page 2.06		
	Pilot Operated "Kick-Down" Sequence Valve		
	SQDB Page 2.08		
OTHER VALVES:			