



ISO 03 SANDWICH BODIES



- Aluminum rated to 3000 psi and Ductile Iron rated to 5000 psi.
- See page viii for ordering cartridge/body and seals. Pressure ratings, material specifications on page xiv.

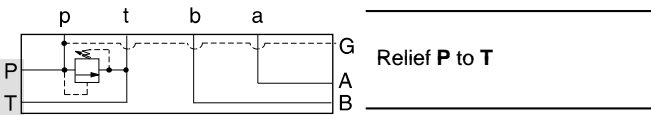
03 SUBPLATE

Side Ported Subplates

Mounting Holes:
.28 diameter through hole.
4 places.

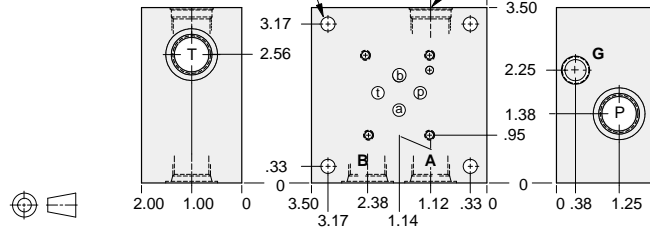
T-10A Cavity
Locating Shoulder
Depth .03

4 Interface Bolt Holes
x .38 deep
Inch: 10-24 UNC
Metric: M5 x 0.8



FUNCTION

Relief P to T



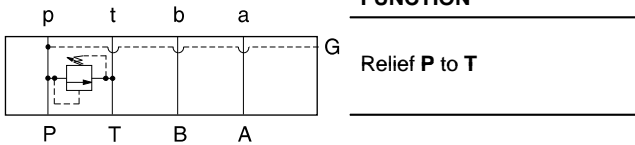
Bolt Hole Interface	Gage Port	Ports A,B,P,T	ALUMINUM		DUCTILE IRON	
			Model Code	List Price	Model Code	List Price
Inch	.25 NPTF	.375 NPTF	FSB		FSB/S	
Inch	.25 NPTF	SAE-8	FSJ		FSJ/S	
Metric	.25 BSPP	.375 BSPP	FSU		FSU/S	

Rear Ported Subplates

Mounting Holes:
.28 diameter through hole.
4 places.

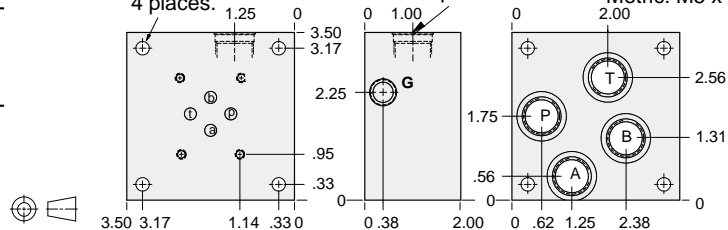
T-10A Cavity
Locating Shoulder
Depth .03

4 Interface Bolt Holes
x .38 deep
Inch: 10-24 UNC
Metric: M5 x 0.8



FUNCTION

Relief P to T



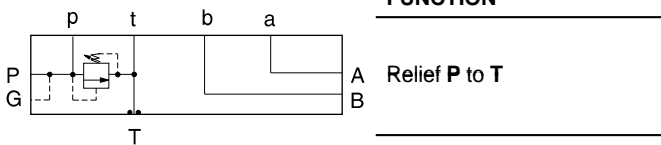
Bolt Hole Interface	Gage Port	Ports A,B,P,T	ALUMINUM		DUCTILE IRON	
			Model Code	List Price	Model Code	List Price
Inch	.25 NPTF	.375 NPTF	FRB		FRB/S	
Inch	.25 NPTF	SAE-8	FRJ		FRJ/S	
Metric	.25 BSPP	.375 BSPP	FRU		FRU/S	

Side Ported Subplates with Gasket Mount Tank Port

4 Interface Bolt Holes
x .38 deep
Inch: 10-24 UNC
Metric: M5 x 0.8

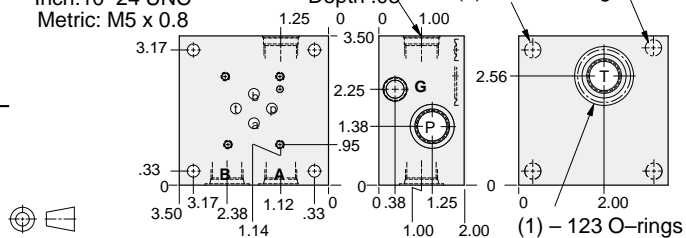
T-10A Cavity
Locating Shoulder
Depth .03

Mounting Holes (Sealed):
.28 diameter through hole.
4 places.



FUNCTION

Relief P to T



Bolt Hole Interface	Gage Port	Ports A,B,P	ALUMINUM		DUCTILE IRON	
			Model Code	List Price	Model Code	List Price
Inch	.25 NPTF	.375 NPTF	FTB		FTB/S	
Inch	.25 NPTF	SAE-8	FTJ		FTJ/S	
Metric	.25 BSPP	.375 BSPP	FTU		FTU/S	

TYPICAL CARTRIDGES USED WITH BODIES SHOWN ABOVE

	Pilot Operated Relief Valve		Pilot Operated "Kick-Down" Relief Valve
	RPEC Page 1.06		RQEB Page 1.12
	Pilot Operated, Rapid Response Relief Valve		Direct Acting Relief Valve
	RPEE Page 1.08		RDDA Page 1.10



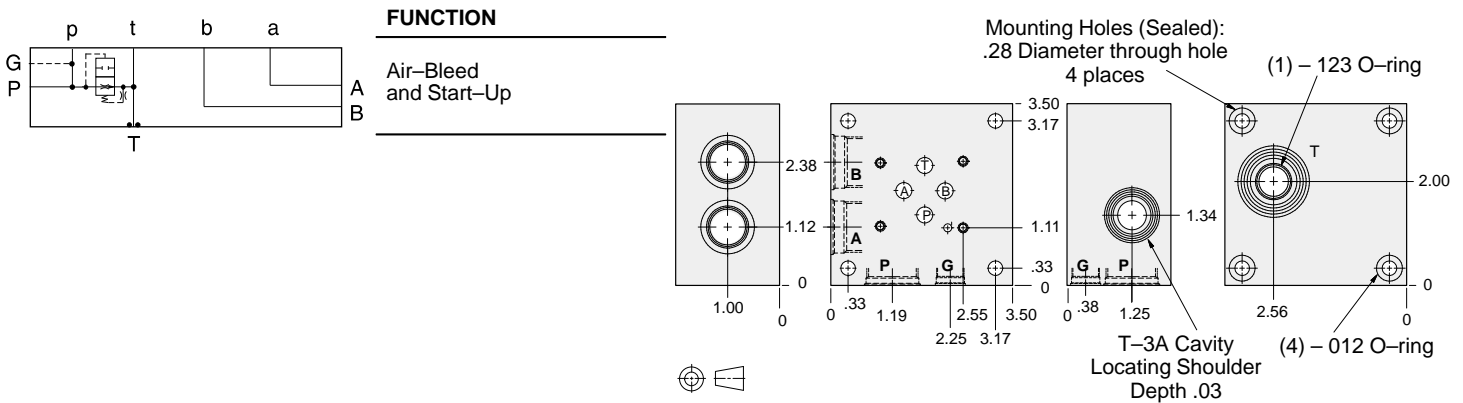
ISO 03 SANDWICH BODIES



- Aluminum rated to 3000 psi and Ductile Iron rated to 5000 psi.
- See page viii for ordering cartridge/body and seals. Pressure ratings, material specifications on page xiv.

03 SUBPLATE

Side Ported Subplates with Gasket Mount Tank Port



FUNCTION
Air-Bleed and Start-Up

Bolt Hole Interface	Ports T	Ports A,B,P	Gage Port	ALUMINUM		DUCTILE IRON	
				Model Code	List Price	Model Code	List Price
Inch	.375 NPTF	.375 NPTF	.25 NPTF	CTB		CTB/S	
Inch	.375 NPTF	SAE-8	.25 NPTF	CTJ		CTJ/S	
Metric	.375 BSPP	.375 BSPP	.25 BSPP	CTU		CTU/S	

TYPICAL CARTRIDGES USED WITH BODIES SHOWN ABOVE			
	Air Bleed and Start-up Valve		
	NQEB Page 10.16		

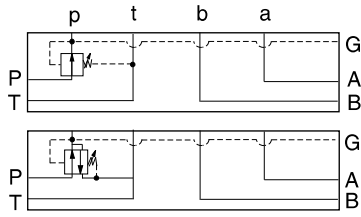


ISO 03 SANDWICH BODIES



- Aluminum rated to 3000 psi and Ductile Iron rated to 5000 psi.
- See page viii for ordering cartridge/body and seals. Pressure ratings, material specifications on page xiv.

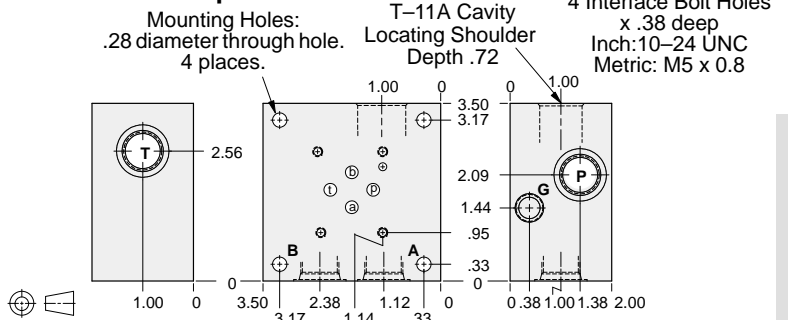
Side Ported Subplates



FUNCTION

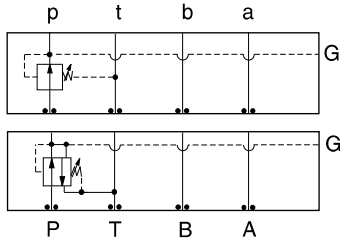
Reducing on P

Reducing/
Relieving on P



Bolt Hole Interface	Gage Port	Ports A,B,P,T	ALUMINUM		DUCTILE IRON	
			Model Code	List Price	Model Code	List Price
Inch	.25 NPTF	.375 NPTF	ESB		ESB/S	
Inch	.25 NPTF	SAE-8	ESJ		ESJ/S	
Metric	.25 BSPP	.375 BSPP	ESU		ESU/S	

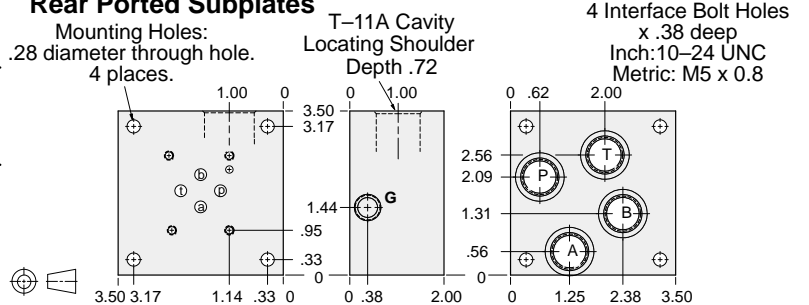
Rear Ported Subplates



FUNCTION

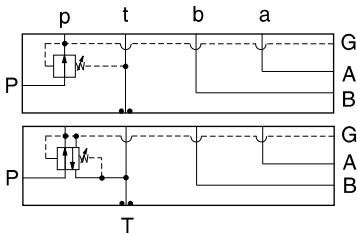
Reducing on P

Reducing/
Relieving on P



Bolt Hole Interface	Gage Port	Ports A,B,P,T	ALUMINUM		DUCTILE IRON	
			Model Code	List Price	Model Code	List Price
Inch	.25 NPTF	.375 NPTF	ERB		ERB/S	
Inch	.25 NPTF	SAE-8	ERJ		ERJ/S	
Metric	.25 BSPP	.375 BSPP	ERU		ERU/S	

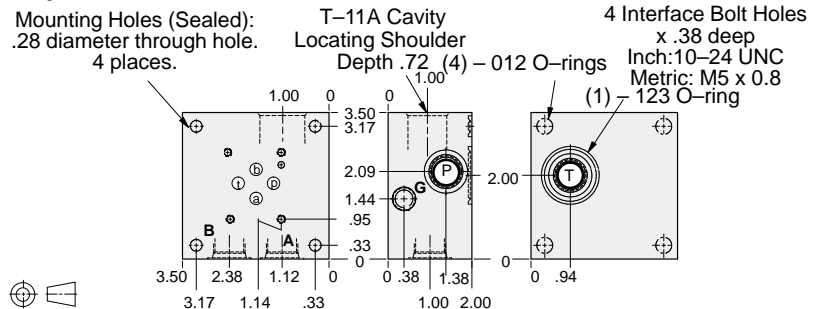
Side Ported Subplates with Gasket Mount Tank Port



FUNCTION

Reducing on P

Reducing/
Relieving on P



Bolt Hole Interface	Gage Port	Ports A,B,P,T	ALUMINUM		DUCTILE IRON	
			Model Code	List Price	Model Code	List Price
Inch	.25 NPTF	.375 NPTF	ETB		ETB/S	
Inch	.25 NPTF	SAE-8	ETJ		ETJ/S	
Metric	.25 BSPP	.375 BSPP	ETU		ETU/S	

TYPICAL CARTRIDGES USED WITH BODIES SHOWN ABOVE

	Pilot Operated Reducing Valve PBDB Page 3.06		Pilot Operated Relief Valve PPDB Page 3.10
--	---	--	---

03 SUBPLATE



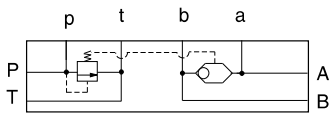
ISO 03 SANDWICH BODIES



- Aluminum rated to 3000 psi and Ductile Iron rated to 5000 psi.
- See page viii for ordering cartridge/body and seals. Pressure ratings, material specifications on page xiv.

03 SUBPLATE

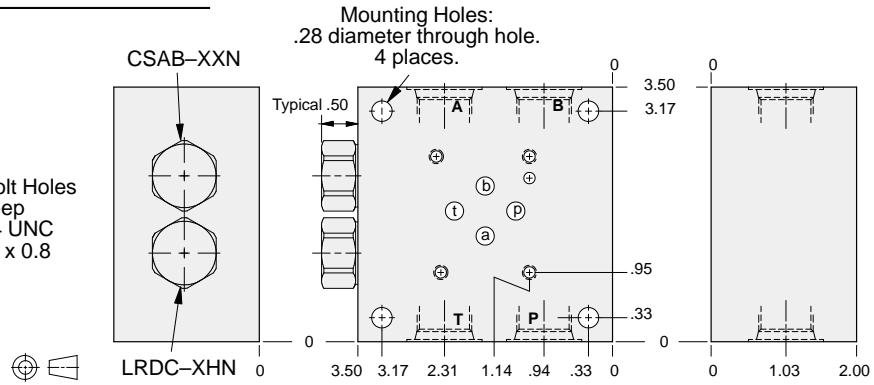
Side Ported Subplates



FUNCTION

Bypass
Compensator
for Proportional
Valves

4 Interface Bolt Holes
x .38 deep
Inch: 10-24 UNC
Metric: M5 x 0.8



Bolt Hole Interface	Port A,B,P,T	ALUMINUM		DUCTILE IRON	
		Model Code	List Price	Model Code	List Price
Inch	.375 NPTF	YFCL-XHN-BB		YFCL-XHN-BB/S	
Inch	SAE-8	YFCL-XHN-BJ		YFCL-XHN-BJ/S	
Metric	.375 BSPP	YFCL-XHN-BU		YFCL-XHN-BU/S	



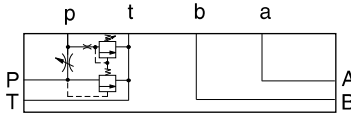
ISO 03 SANDWICH BODIES



- Aluminum rated to 3000 psi and Ductile Iron rated to 5000 psi.
- See page viii for ordering cartridge/body and seals. Pressure ratings, material specifications on page xiv.

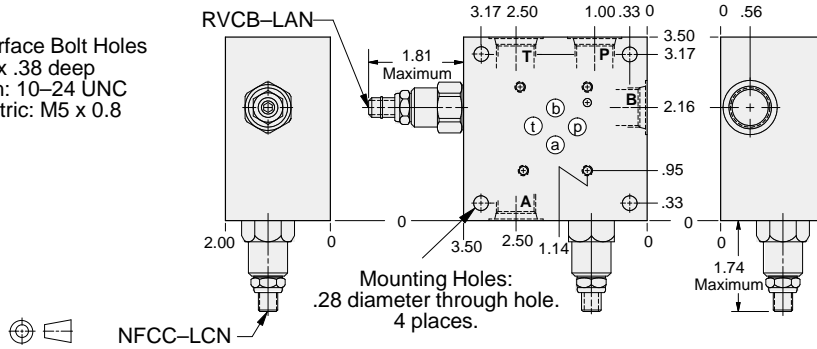
Side Ported Subplates

FUNCTION



Relief P to T
and Bypass
Flow Regulator

4 Interface Bolt Holes
x .38 deep
Inch: 10-24 UNC
Metric: M5 x 0.8



Bolt Hole Interface	Port A,B,P,T	ALUMINUM		DUCTILE IRON	
		Model Code	List Price	Model Code	List Price
Inch	.375 NPTF	YFCS-LCN-BB		YFCS-LCN-BB/S	
Inch	SAE-8	YFCS-LCN-BJ		YFCS-LCN-BJ/S	
Metric	.375 BSPP	YFCS-LCN-BU/M		YFCS-LCN-BU/T	

03 SUBPLATE



ISO 03 SANDWICH BODIES

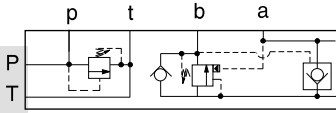


- Aluminum rated to 3000 psi and Ductile Iron rated to 5000 psi.
- See page viii for ordering cartridge/body and seals. Pressure ratings, material specifications on page xiv.

Side Ported Subplates

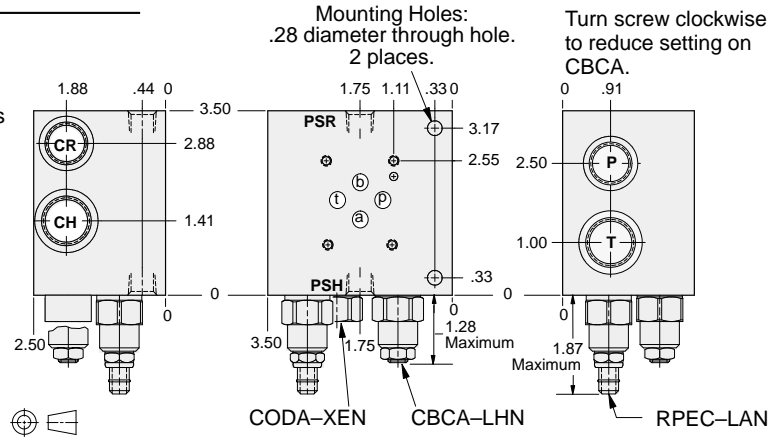
03 SUBPLATE

FUNCTION



A Relief P to T
 Regenerative
 B to A

4 Interface Bolt Holes
 x .38 deep
 Inch: 10-24 UNC
 Metric: M5 x 0.8



Bolt Holes Interface	Ports T, CH	Ports P, CR	Ports PSH, PSR	ALUMINUM		DUCTILE IRON	
				Model Code	List Price	Model Code	List Price
Inch	.50 NPTF	.375 NPTF	.25 NPTF	YDCG-LHN-BC		YDCG-LHN-BC/S	
Inch	SAE-10	SAE-8	.25 NPTF	YDCG-LHN-BK		YDCG-LHN-BK/S	
Metric	.50 BSPP	.375 BSPP	.25 BSPP	YDCG-LHN-BV		YDCG-LHN-BV/S	