

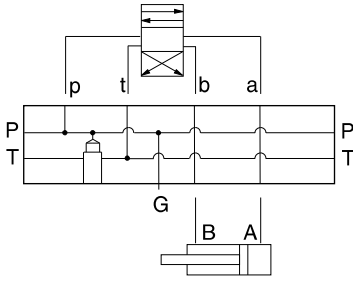


BAR MANIFOLDS



- Aluminum rated to 3000 psi and Ductile Iron rated to 5000 psi.
- See page viii for ordering cartridge/body and seals. Pressure ratings, material specifications on page xiv.

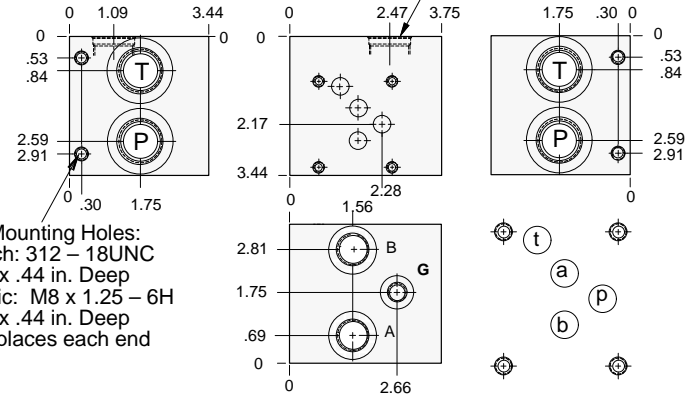
ISO 05 Parallel Circuit with Relief Cavity



FUNCTION

One Station

T-3A Cavity
Locating Shoulder
Depth .03



Mounting Holes:
Inch: 312 - 18UNC
x .44 in. Deep
Metric: M8 x 1.25 - 6H
x .44 in. Deep
2 places each end

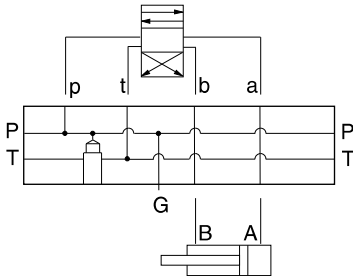


Mounting Holes	Ports P, T	Ports A, B	Gage Port	ALUMINUM		DUCTILE IRON	
				Model Code	List Price	Model Code	List Price
inch	.75 NPTF	.50 NPTF	.25 NPTF	VPL		VPL/S	
inch	SAE-12	SAE-8	SAE-4	VPT		VPT/S	
metric	.75 BSPP	.50 BSPP	.25 BSPP	VNA		VNA/S	

Bar Manifold Mounting Kits to be ordered separately. See page 12.087.

BARMANIFOLD

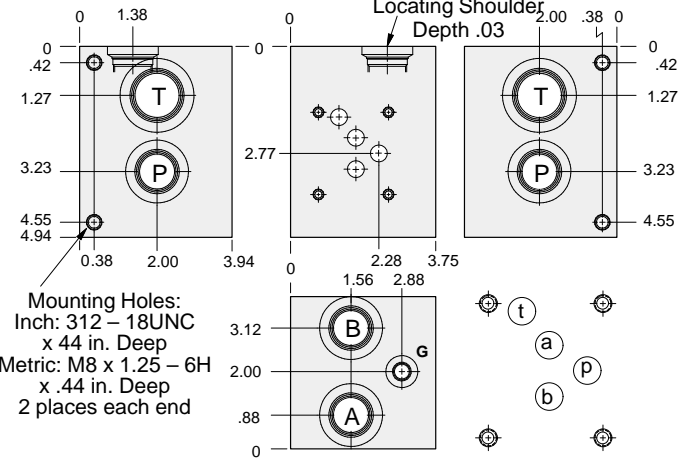
ISO 05 Parallel Circuit with Relief Cavity



FUNCTION

One Station
(High Capacity)

T-3A Cavity
Locating Shoulder
Depth .03



Mounting Holes:
Inch: 312 - 18UNC
x .44 in. Deep
Metric: M8 x 1.25 - 6H
x .44 in. Deep
2 places each end



Mounting Holes	Port T	Ports A, B, P	Gage Port	ALUMINUM		DUCTILE IRON	
				Model Code	List Price	Model Code	List Price
inch	1.00 NPTF	.75 NPTF	.25 NPTF	VNG		VNG/S	
inch	SAE-16	SAE-12	SAE-4	VNN		VNN/S	
metric	1.00 BSPP	.75 BSPP	.25 BSPP	VNW		VNW/S	

Bar Manifold Mounting Kits to be ordered separately. See page 12.087.

TYPICAL CARTRIDGES USED WITH BODIES SHOWN ABOVE

	Pilot Operated Relief Valve		Direct Acting Relief Valve
	RPGC Page 1.06		RDFA Page 1.10
OTHER VALVES:			

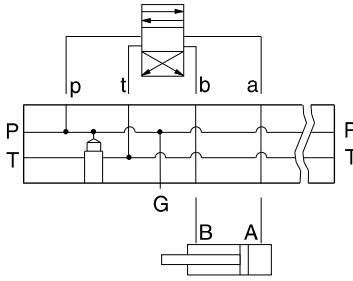


BAR MANIFOLDS



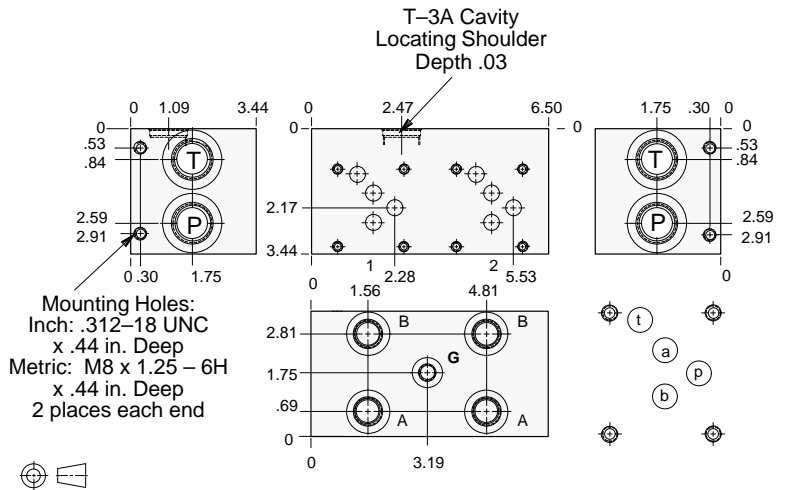
- Aluminum rated to 3000 psi and Ductile Iron rated to 5000 psi.
- See page viii for ordering cartridge/body and seals. Pressure ratings, material specifications on page xiv.

ISO 05 Parallel Circuit with Relief Cavity



FUNCTION

Two Station

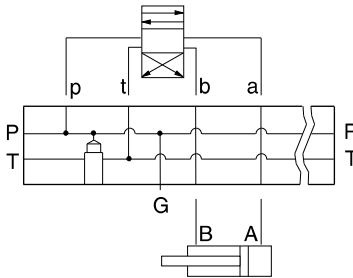


Mounting Holes	Ports P, T	Ports A, B	Gage Port	ALUMINUM		DUCTILE IRON	
				Model Code	List Price	Model Code	List Price
inch	.75 NPTF	.50 NPTF	.25 NPTF	VPM		VPM/S	
inch	SAE-12	SAE-8	SAE-4	VPV		VPV/S	
metric	.75 BSPP	.50 BSPP	.25 BSPP	VNB		VNB/S	

Bar Manifold Mounting Kits to be ordered separately. See page 12.087.

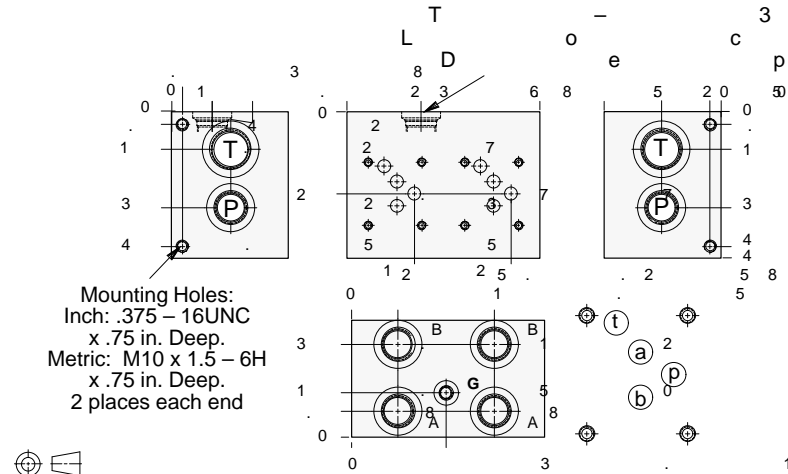
BARMANIFOLD

ISO 05 Parallel Circuit with Relief Cavity



FUNCTION

Two Station
(High Capacity)



Mounting Holes	Port T	Ports A, B, P	Gage Port	ALUMINUM		DUCTILE IRON	
				Model Code	List Price	Model Code	List Price
inch	1.00 NPTF	.75 NPTF	.25 NPTF	VNH		VNH/S	
inch	SAE-16	SAE-12	SAE-4	VNP		VNP/S	
metric	1.00 BSPP	.75 BSPP	.25 BSPP	VNX		VNX/S	

Bar Manifold Mounting Kits to be ordered separately. See page 12.087.

TYPICAL CARTRIDGES USED WITH BODIES SHOWN ABOVE

	Pilot Operated Relief Valve		Direct Acting Relief Valve
	RPGC Page 1.06		RDFA Page 1.10
OTHER VALVES:			

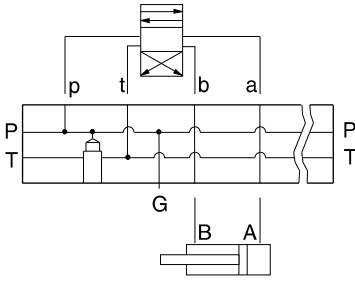


BAR MANIFOLDS



- Aluminum rated to 3000 psi and Ductile Iron rated to 5000 psi.
- See page viii for ordering cartridge/body and seals. Pressure ratings, material specifications on page xiv.

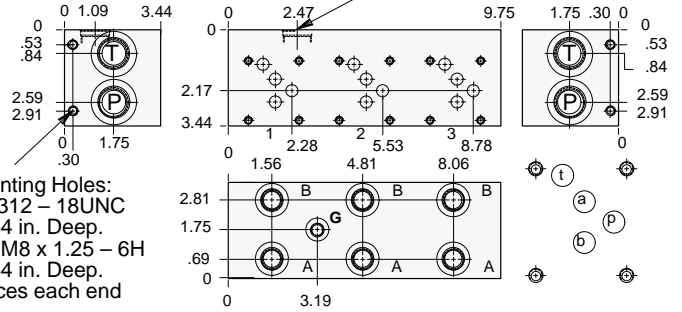
ISO 05 Parallel Circuit with Relief Cavity



FUNCTION

Three Station

T-3A Cavity
Locating Shoulder
Depth .03



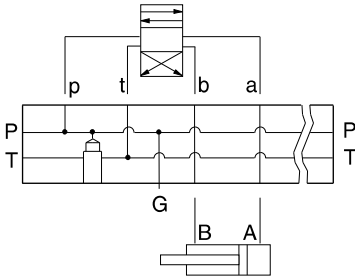
Mounting Holes:
Inch: 312 - 18UNC
x .44 in. Deep.
Metric: M8 x 1.25 - 6H
x .44 in. Deep.
2 places each end



Mounting Holes	Ports P, T	Ports A, B	Gage Port	ALUMINUM		DUCTILE IRON	
				Model Code	List Price	Model Code	List Price
inch	.75 NPTF	.50 NPTF	.25 NPTF	VPN		VPN/S	
inch	SAE-12	SAE-8	SAE-4	VPW		VPW/S	
metric	.75 BSPP	.50 BSPP	.25 BSPP	VNC		VNC/S	

Bar Manifold Mounting Kits to be ordered separately. See page 12.087.

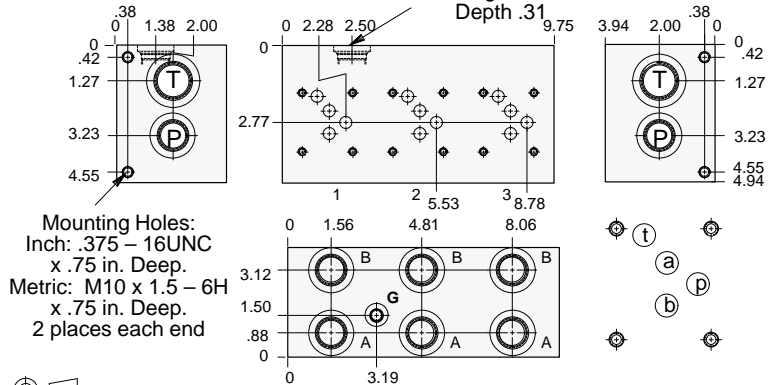
ISO 05 Parallel Circuit with Relief Cavity



FUNCTION

Three Station
(High Capacity)

T-3A Cavity
Locating Shoulder
Depth .31



Mounting Holes:
Inch: .375 - 16UNC
x .75 in. Deep.
Metric: M10 x 1.5 - 6H
x .75 in. Deep.
2 places each end



Mounting Holes	Port T	Ports A, B, P	Gage Port	ALUMINUM		DUCTILE IRON	
				Model Code	List Price	Model Code	List Price
inch	1.00 NPTF	.75 NPTF	.25 NPTF	VNJ		VNJ/S	
inch	SAE-16	SAE-12	SAE-4	VNR		VNR/S	
metric	1.00 BSPP	.75 BSPP	.25 BSPP	VNY		VNY/S	

Bar Manifold Mounting Kits to be ordered separately. See page 12.087.

TYPICAL CARTRIDGES USED WITH BODIES SHOWN ABOVE

	Pilot Operated Relief Valve		Direct Acting Relief Valve
	RPGC Page 1.06		RDFA Page 1.10
OTHER VALVES:			

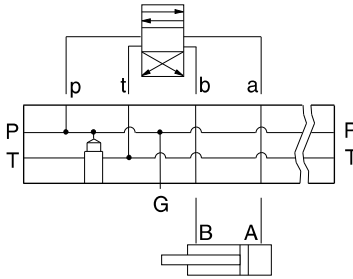


BAR MANIFOLDS



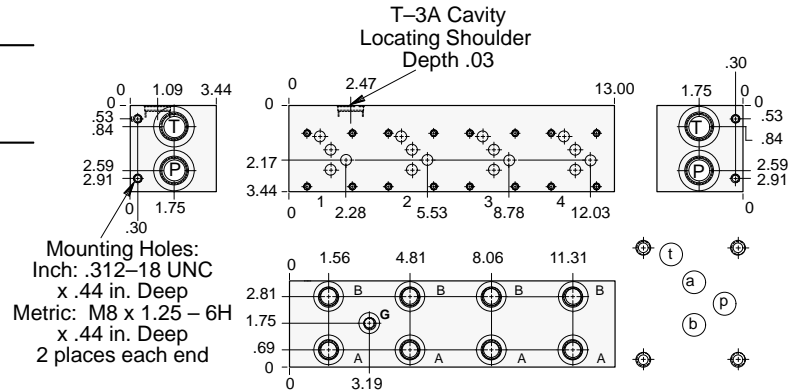
- Aluminum rated to 3000 psi and Ductile Iron rated to 5000 psi.
- See page viii for ordering cartridge/body and seals. Pressure ratings, material specifications on page xiv.

ISO 05 Parallel Circuit with Relief Cavity



FUNCTION

Four Station

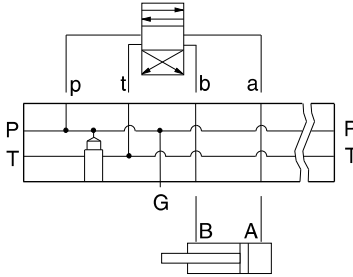


Mounting Holes	Ports P, T	Ports A, B	Gage Port	ALUMINUM		DUCTILE IRON	
				Model Code	List Price	Model Code	List Price
inch	.75 NPTF	.50 NPTF	.25 NPTF	VPP		VPP/S	
inch	SAE-12	SAE-8	SAE-4	VPX		VPX/S	
metric	.75 BSPP	.50 BSPP	.25 BSPP	VND		VND/S	

Bar Manifold Mounting Kits to be ordered separately. See page 12.087.

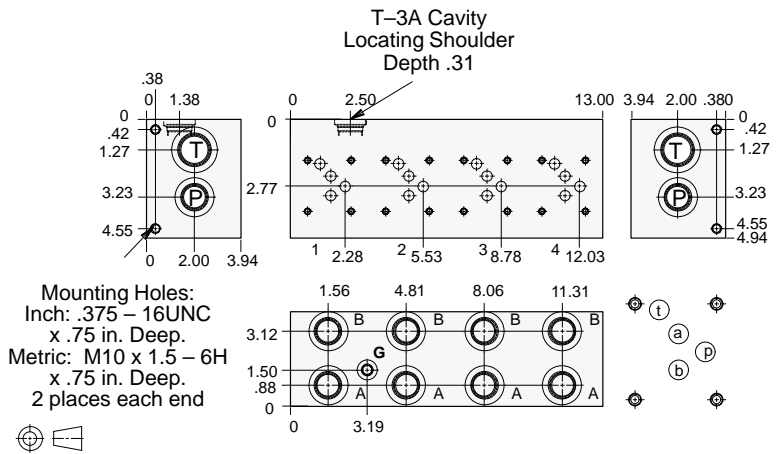
BARMANIFOLD

ISO 05 Parallel Circuit with Relief Cavity



FUNCTION

Four Station
(High Capacity)



Mounting Holes	Port T	Ports A, B, P	Gage Port	ALUMINUM		DUCTILE IRON	
				Model Code	List Price	Model Code	List Price
inch	1.00 NPTF	.75 NPTF	.25 NPTF	VNK		VNK/S	
inch	SAE-16	SAE-12	SAE-4	VNS		VNS/S	
metric	1.00 BSPP	.75 BSPP	.25 BSPP	VNZ		VNZ/S	

Bar Manifold Mounting Kits to be ordered separately. See page 12.087.

TYPICAL CARTRIDGES USED WITH BODIES SHOWN ABOVE

	Pilot Operated Relief Valve		Direct Acting Relief Valve
	RPGC Page 1.06		RDFA Page 1.10
OTHER VALVES:			

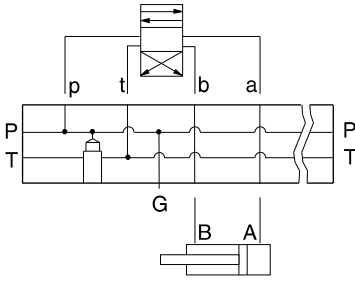


BAR MANIFOLDS



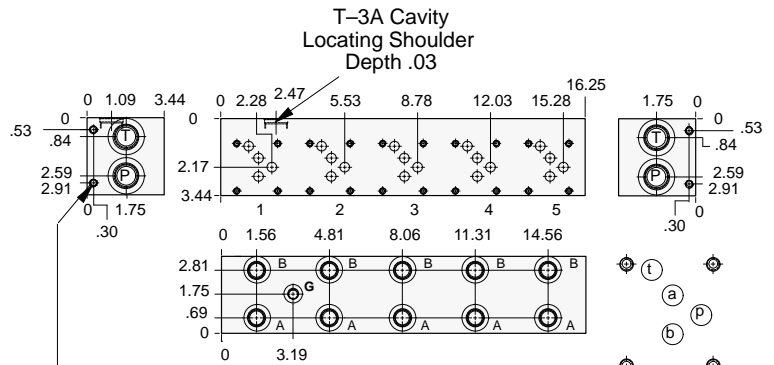
- Aluminum rated to 3000 psi and Ductile Iron rated to 5000 psi.
- See page viii for ordering cartridge/body and seals. Pressure ratings, material specifications on page xiv.

ISO 05 Parallel Circuit with Relief Cavity



FUNCTION

Five Station



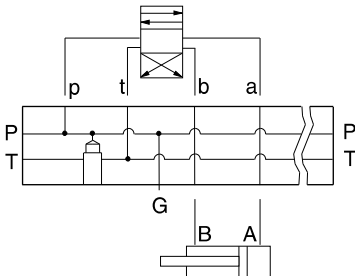
Mounting Holes:
 Inch: .312-18 UNC x .44 in. Deep
 Metric: M8 x 1.25 - 6H x .44 in. Deep
 2 places each end



Mounting Holes	Ports P, T	Ports A, B	Gage Port	ALUMINUM		DUCTILE IRON	
				Model Code	List Price	Model Code	List Price
inch	.75 NPTF	.50 NPTF	.25 NPTF	VPR		VPR/S	
inch	SAE-12	SAE-8	SAE-4	VPY		VPY/S	
metric	.75 BSPP	.50 BSPP	.25 BSPP	VNE		VNE/S	

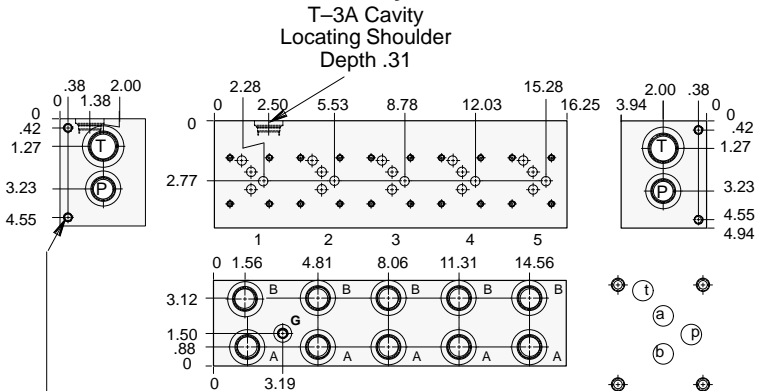
Bar Manifold Mounting Kits to be ordered separately. See page 12.087.

ISO 05 Parallel Circuit with Relief Cavity



FUNCTION

Five Station
(High Capacity)



Mounting Holes:
 Inch: .375 - 16UNC x .75 in. Deep.
 Metric: M10 x 1.5 - 6H x .75 in. Deep.
 2 places each end



Mounting Holes	Port T	Ports A, B, P	Gage Port	ALUMINUM		DUCTILE IRON	
				Model Code	List Price	Model Code	List Price
inch	1.00 NPTF	.75 NPTF	.25 NPTF	VNL		VNL/S	
inch	SAE-16	SAE-12	SAE-4	VNT		VNT/S	
metric	1.00 BSPP	.75 BSPP	.25 BSPP	VMA		VMA/S	

Bar Manifold Mounting Kits to be ordered separately. See page 12.087.

TYPICAL CARTRIDGES USED WITH BODIES SHOWN ABOVE

	Pilot Operated Relief Valve RPGC Page 1.06		Direct Acting Relief Valve RDFA Page 1.10
OTHER VALVES:			