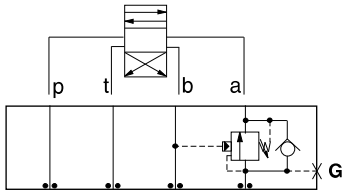




# ISO 05 SANDWICH BODIES



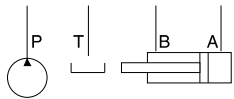
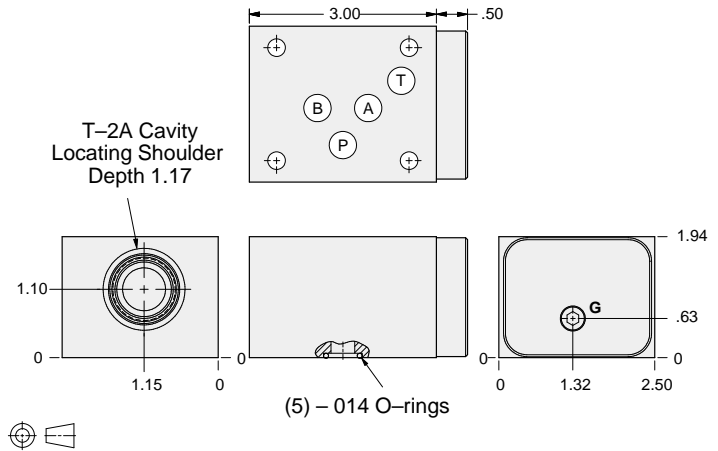
- Aluminum rated to 3000 psi and Ductile Iron rated to 5000 psi.
- See page viii for ordering cartridge/body and seals. Pressure ratings, material specifications on page xiv.



### FUNCTION

On A Pilot  
from B

### Counterbalance Valves



Gage Port (Plugged)	ALUMINUM		DUCTILE IRON	
	Model Code	List Price	Model Code	List Price
.25 NPTF	<b>BBA</b>		<b>BBA/S</b>	
.25 BSPP	<b>BBA/M</b>		<b>BBA/T</b>	

05 COUNTERBALANCE

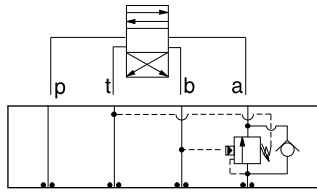
TYPICAL CARTRIDGES USED WITH BODIES SHOWN ABOVE			
	Counterbalance Valve, 3:1 Pilot Ratio		
	<b>CBEA Page 4.10</b>		
	Counterbalance Valve, 4.5:1 Pilot Ratio		
	<b>CBEG Page 4.12</b>		
	Counterbalance Valve, 10:1 Pilot Ratio		
	<b>CBEH Page 4.14</b>		
<b>OTHER VALVES:</b>			



# ISO 05 SANDWICH BODIES



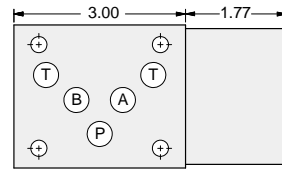
- Aluminum rated to 3000 psi and Ductile Iron rated to 5000 psi.
- See page viii for ordering cartridge/body and seals. Pressure ratings, material specifications on page xiv.



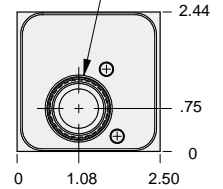
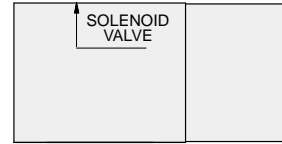
### FUNCTION

On A Pilot from B  
Vent to T

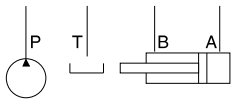
### Counterbalance Valves



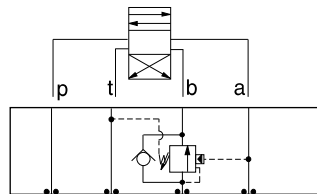
T-22A Cavity  
Locating Shoulder  
Depth 1.31



(5) - .014 O-rings



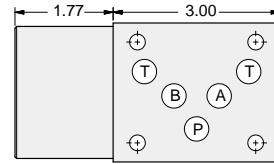
ALUMINUM		DUCTILE IRON	
Model Code	List Price	Model Code	List Price
NBA		NBA/S	



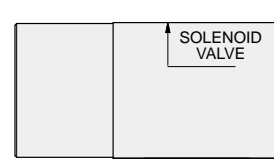
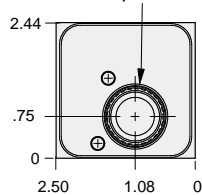
### FUNCTION

On B Pilot from A  
Vent to T

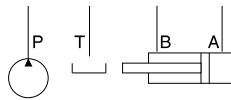
### Counterbalance Valves



T-22A Cavity  
Locating Shoulder  
Depth 1.31



(5) - .014 O-rings



ALUMINUM		DUCTILE IRON	
Model Code	List Price	Part Number	List Price
NBB		NBB/S	

### TYPICAL CARTRIDGES USED WITH BODIES SHOWN ABOVE

	Vented Counterbalance Valve, 3:1 Pilot Ratio		
	<b>CWEA Page 4.18</b>		
	Vented Counterbalance Valve, 5:1 Pilot Ratio		
	<b>CWEG Page 4.20</b>		
<b>OTHER VALVES:</b>			

05 COUNTERBALANCE

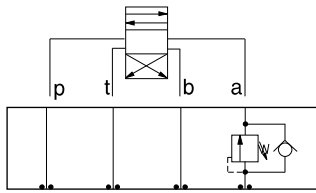


# ISO 05 SANDWICH BODIES



- Aluminum rated to 3000 psi and Ductile Iron rated to 5000 psi.
- See page viii for ordering cartridge/body and seals. Pressure ratings, material specifications on page xiv.

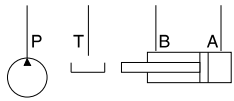
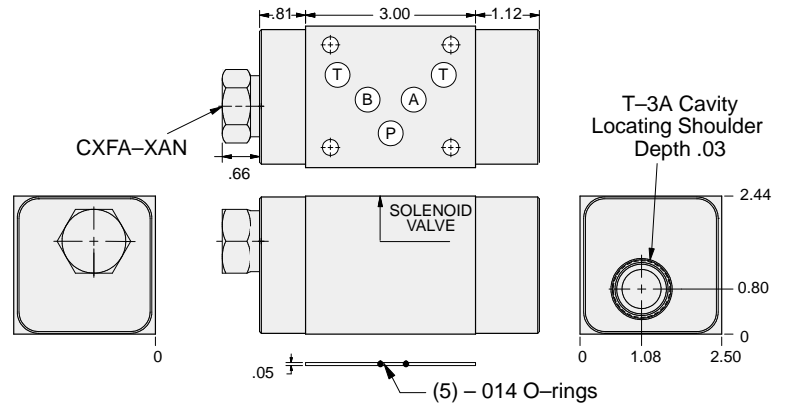
05 COUNTERBALANCE



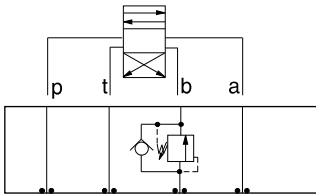
### FUNCTION

On A  
No Pilot Assist

### Counterbalance Valves



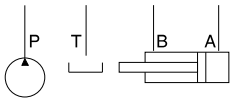
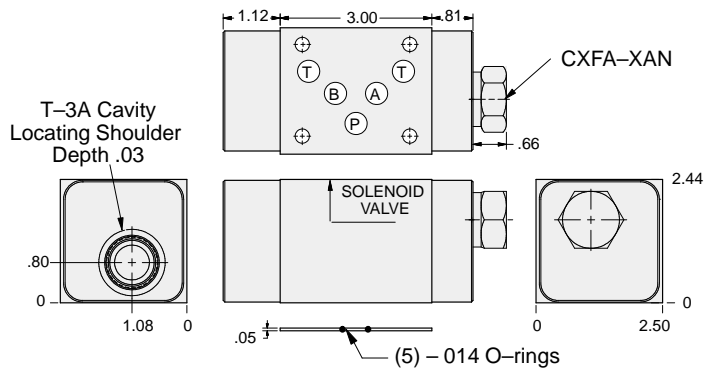
ALUMINUM		DUCTILE IRON	
Model Code	List Price	Model Code	List Price
<b>CB4</b>		<b>CB4/S</b>	



### FUNCTION

On B  
No Pilot Assist

### Counterbalance Valves



ALUMINUM		DUCTILE IRON	
Model Code	List Price	Model Code	List Price
<b>CB5</b>		<b>CB5/S</b>	

### TYPICAL CARTRIDGES USED WITH BODIES SHOWN ABOVE

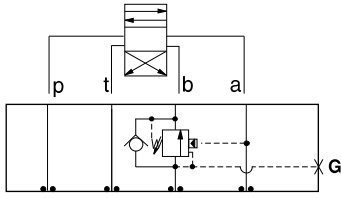
	Direct Acting Relief Valve		
	<b>RDFA Page 1.10</b>		
<b>OTHER VALVES:</b>			



# ISO 05 SANDWICH BODIES



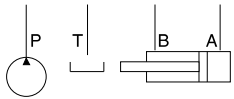
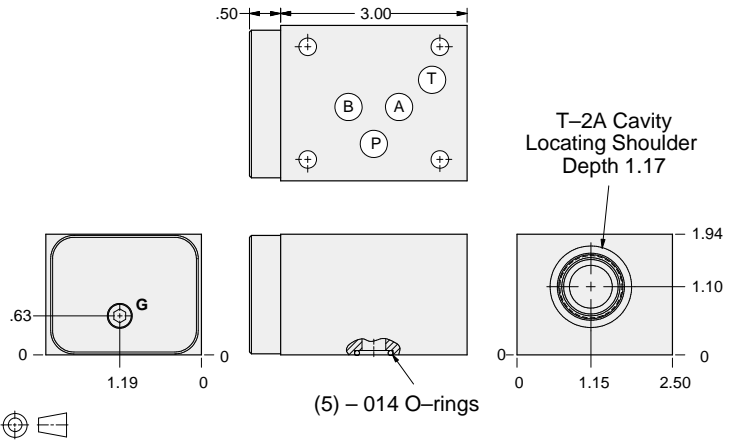
- Aluminum rated to 3000 psi and Ductile Iron rated to 5000 psi.
- See page viii for ordering cartridge/body and seals. Pressure ratings, material specifications on page xiv.



### FUNCTION

On **B**  
Pilot from **A**

### Counterbalance Valves



Gage Port (Plugged)	ALUMINUM		DUCTILE IRON	
	Model Code	List Price	Model Code	List Price
.25 NPTF	<b>BBB</b>		<b>BBB/S</b>	
.25 BSPP	<b>BBB/M</b>		<b>BBB/T</b>	

05 COUNTERBALANCE

### TYPICAL CARTRIDGES USED WITH BODIES SHOWN ABOVE

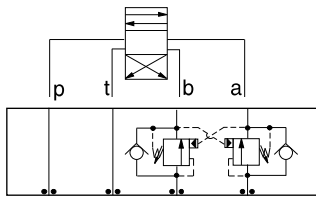
	Counterbalance Valve, 3:1 Pilot Ratio		
	<b>CBEA Page 4.10</b>		
	Counterbalance Valve, 4.5:1 Pilot Ratio		
	<b>CBEG Page 4.12</b>		
	Counterbalance Valve, 10:1 Pilot Ratio		
	<b>CBEH Page 4.14</b>		
<b>OTHER VALVES:</b>			



# ISO 05 SANDWICH BODIES



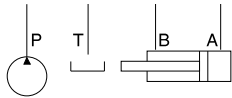
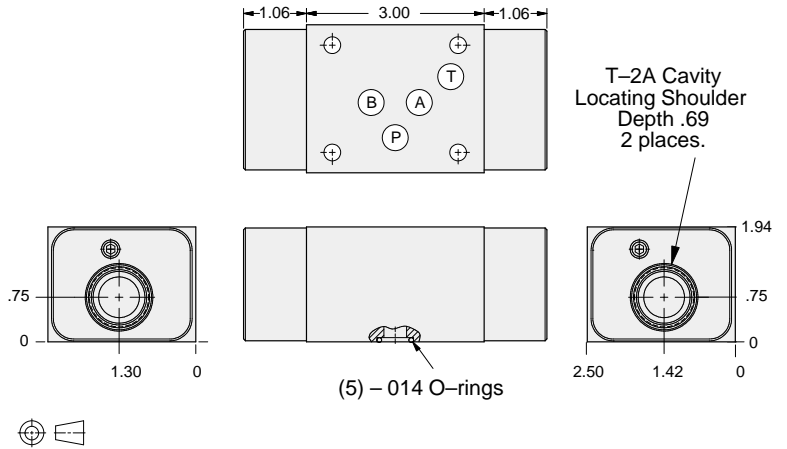
- Aluminum rated to 3000 psi and Ductile Iron rated to 5000 psi.
- See page viii for ordering cartridge/body and seals. Pressure ratings, material specifications on page xiv.



### FUNCTION

On **A** and **B**  
Cross-Piloted

### Counterbalance Valves



ALUMINUM		DUCTILE IRON	
<i>Model Code</i>	<i>List Price</i>	<i>Model Code</i>	<i>List Price</i>
<b>BBY</b>		<b>BBY/S</b>	

05 COUNTERBALANCE

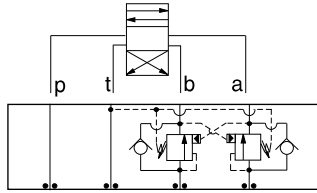
TYPICAL CARTRIDGES USED WITH BODIES SHOWN ABOVE			
	<i>Counterbalance Valve, 3:1 Pilot Ratio</i>		
	<b>CBEA Page 4.10</b>		
	<i>Counterbalance Valve, 4.5:1 Pilot Ratio</i>		
	<b>CBEG Page 4.12</b>		
	<i>Counterbalance Valve, 10:1 Pilot Ratio</i>		
	<b>CBEH Page 4.14</b>		
<b>OTHER VALVES:</b>			



# ISO 05 SANDWICH BODIES



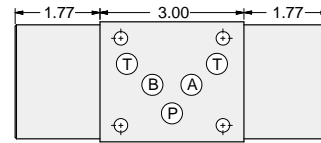
- Aluminum rated to 3000 psi and Ductile Iron rated to 5000 psi.
- See page viii for ordering cartridge/body and seals. Pressure ratings, material specifications on page xiv.



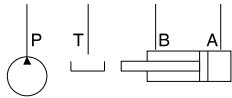
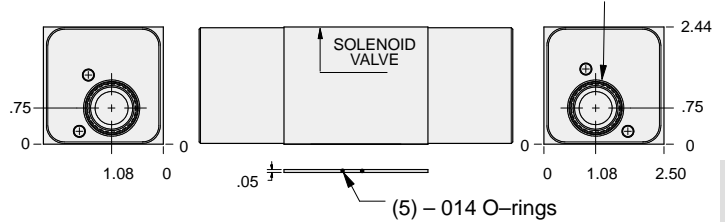
### FUNCTION

On **A** and **B**  
Cross-Piloted  
Vents to **T**

## Counterbalance Valves



T-22A Cavity  
Locating Shoulder  
Depth 1.31  
2 places.



ALUMINUM		DUCTILE IRON	
Model Code	List Price	Model Code	List Price
<b>NBY</b>		<b>NBY/S</b>	

**05 COUNTERBALANCE**

### TYPICAL CARTRIDGES USED WITH BODIES SHOWN ABOVE

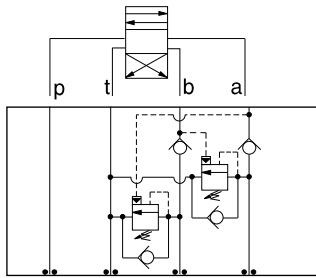
	Vented Counterbalance Valve, 3:1 Pilot Ratio		
	<b>CWEA Page 4.18</b>		
	Vented Counterbalance Valve, 5:1 Pilot Ratio		
	<b>CWEG Page 4.20</b>		
<b>OTHER VALVES:</b>			



# ISO 05 SANDWICH BODIES



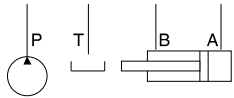
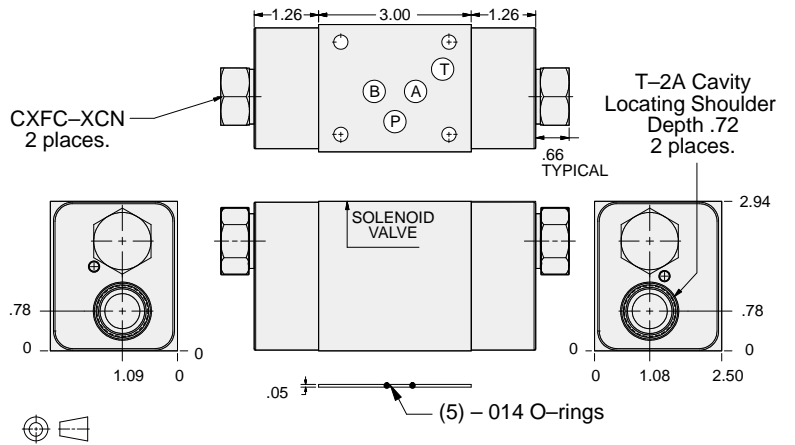
- Aluminum rated to 3000 psi and Ductile Iron rated to 5000 psi.
- See page viii for ordering cartridge/body and seals. Pressure ratings, material specifications on page xiv.



### FUNCTION

Cushion Lock  
Circuit  
On A and B

### Counterbalance Valves



ALUMINUM		DUCTILE IRON	
Model Code	List Price	Model Code	List Price
<b>BB8</b>		<b>BB8/S</b>	

05 COUNTERBALANCE

#### TYPICAL CARTRIDGES USED WITH BODIES SHOWN ABOVE

	Counterbalance Valve, 3:1 Pilot Ratio		
	<b>CBEA Page 4.10</b>		
	Counterbalance Valve, 4.5:1 Pilot Ratio		
	<b>CBEG Page 4.12</b>		
	Counterbalance Valve, 10:1 Pilot Ratio		
	<b>CBEH Page 4.14</b>		
<b>OTHER VALVES:</b>			