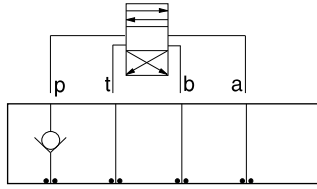




ISO 05 SANDWICH BODIES



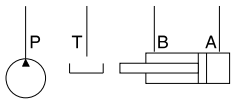
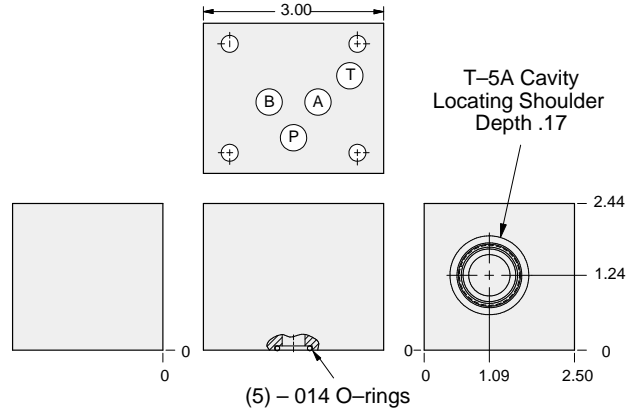
- Aluminum rated to 3000 psi and Ductile Iron rated to 5000 psi.
- See page viii for ordering cartridge/body and seals. Pressure ratings, material specifications on page xiv.



FUNCTION

On P

Check Valves



ALUMINUM		DUCTILE IRON	
Model Code	List Price	Model Code	List Price
DBP		DBP/S	

05 CHECK

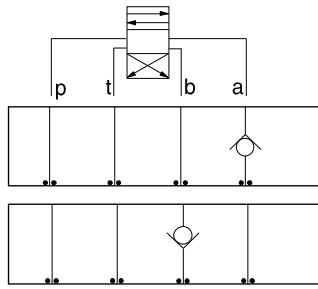
TYPICAL CARTRIDGES USED WITH BODIES SHOWN ABOVE			
	Check Valve, Free Flow Port 1 to Port 2 (Nose-to-Side)		
	CXFA Page 5.08		
OTHER VALVES:			



ISO 05 SANDWICH BODIES



- Aluminum rated to 3000 psi and Ductile Iron rated to 5000 psi.
- See page viii for ordering cartridge/body and seals. Pressure ratings, material specifications on page xiv.

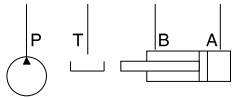
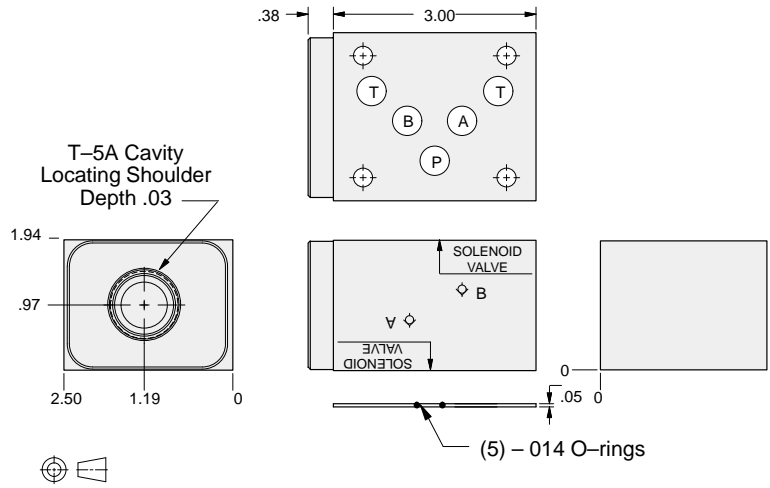


FUNCTION

On A
Free Flow Out
of Valve

On B
Free Flow Into
Valve

Check Valves



ALUMINUM		DUCTILE IRON	
<i>Model Code</i>	<i>List Price</i>	<i>Model Code</i>	<i>List Price</i>
DBK		DBK/S	

05 CHECK

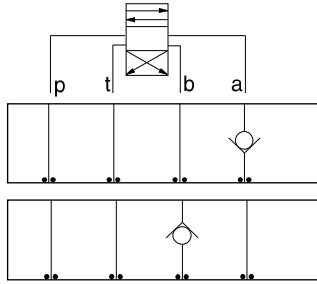
TYPICAL CARTRIDGES USED WITH BODIES SHOWN ABOVE			
	Check Valve, Free Flow Port 1 to Port 2 (Nose-to-Side)		
	CXFA Page 5.08		
OTHER VALVES:			



ISO 05 SANDWICH BODIES



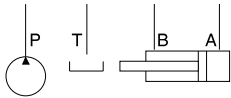
- Aluminum rated to 3000 psi and Ductile Iron rated to 5000 psi.
- See page viii for ordering cartridge/body and seals. Pressure ratings, material specifications on page xiv.



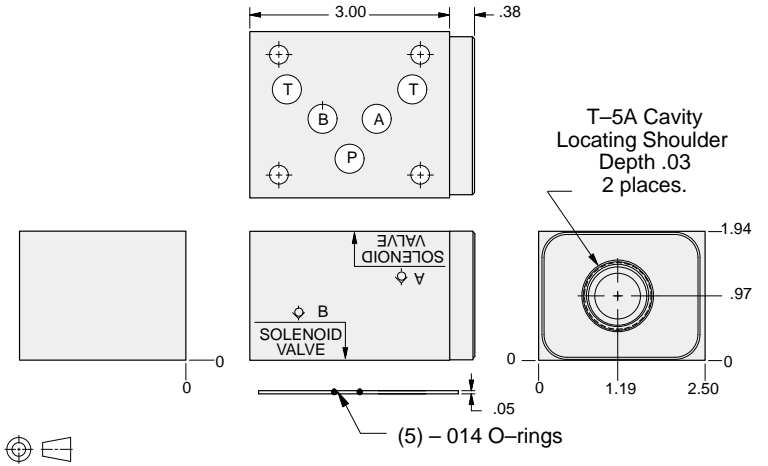
FUNCTION

On A
Free Flow Into
Valve

On B
Free Flow Out
of Valve



Check Valves



ALUMINUM		DUCTILE IRON	
Model Code	List Price	Model Code	List Price
DBJ		DBJ/S	

05 CHECK

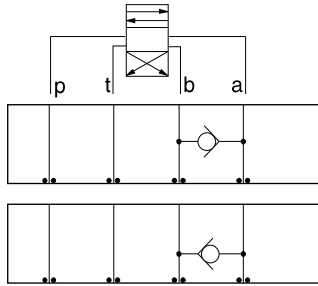
TYPICAL CARTRIDGES USED WITH BODIES SHOWN ABOVE			
	Check Valve, Free Flow Port 1 to Port 2 (Nose-to-Side)		
	CXFA Page 5.08		
OTHER VALVES:			



ISO 05 SANDWICH BODIES



- Aluminum rated to 3000 psi and Ductile Iron rated to 5000 psi.
- See page viii for ordering cartridge/body and seals. Pressure ratings, material specifications on page xiv.

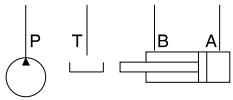
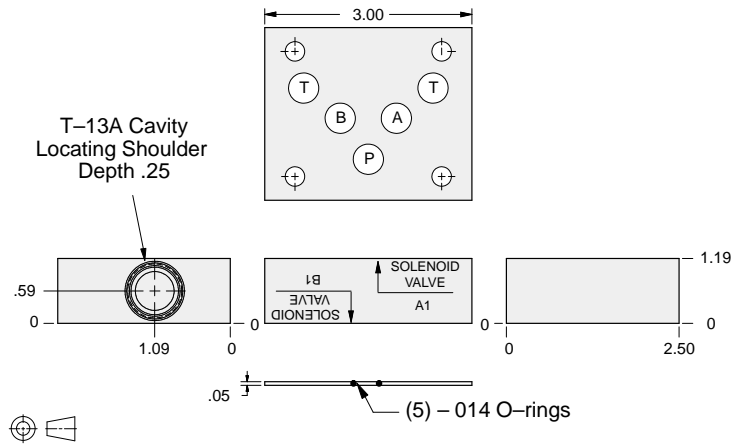


FUNCTION

A to B

B to A

Check Valves



ALUMINUM		DUCTILE IRON	
Model Code	List Price	Model Code	List Price
DBS		DBS/S	

05 CHECK

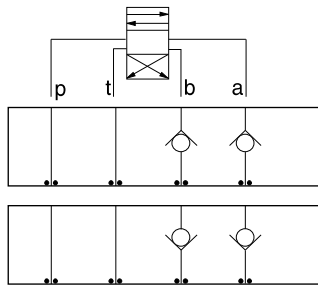
TYPICAL CARTRIDGES USED WITH BODIES SHOWN ABOVE			
	Check Valve, Free Flow Port 1 to Port 2 (Nose-to-Side)		
	CXDA Page 5.08		
OTHER VALVES:			



ISO 05 SANDWICH BODIES



- Aluminum rated to 3000 psi and Ductile Iron rated to 5000 psi.
- See page viii for ordering cartridge/body and seals. Pressure ratings, material specifications on page xiv.

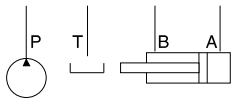
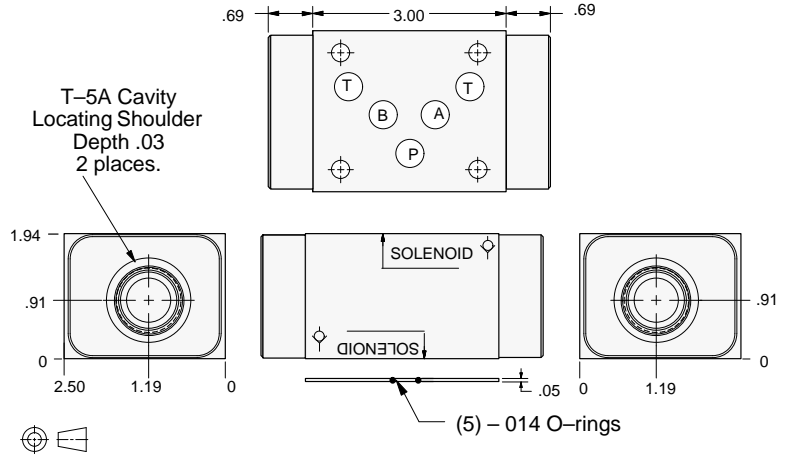


FUNCTION

On **A** and **B**
Free Flow Out
of Valve

On **A** and **B**
Free Flow Into Valve

Check Valves



ALUMINUM		DUCTILE IRON	
Model Code	List Price	Model Code	List Price
DBL		DBL/S	

05 CHECK

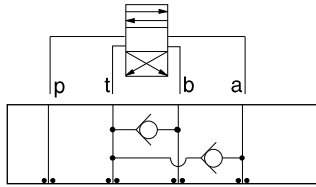
TYPICAL CARTRIDGES USED WITH BODIES SHOWN ABOVE			
	Check Valve, Free Flow Port 1 to Port 2 (Nose-to-Side)		
	CXFA Page 5.08		
OTHER VALVES:			



ISO 05 SANDWICH BODIES



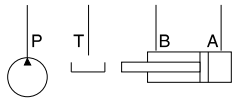
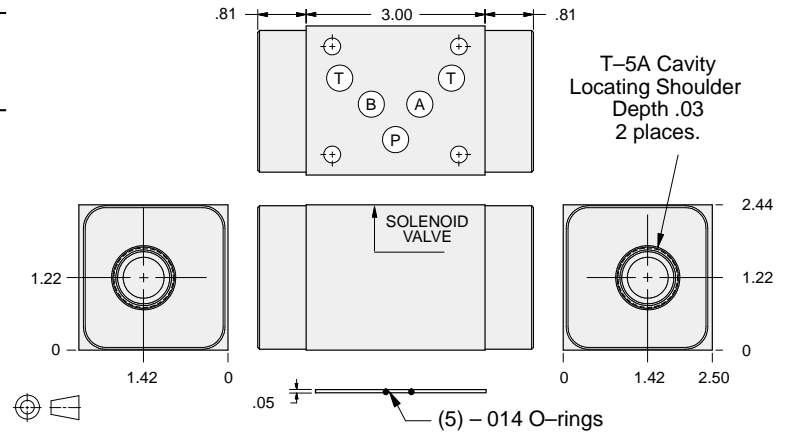
- Aluminum rated to 3000 psi and Ductile Iron rated to 5000 psi.
- See page viii for ordering cartridge/body and seals. Pressure ratings, material specifications on page xiv.



FUNCTION

T to A and B

Check Valves



ALUMINUM		DUCTILE IRON	
Model Code	List Price	Model Code	List Price
DBW		DBW/S	

05 CHECK

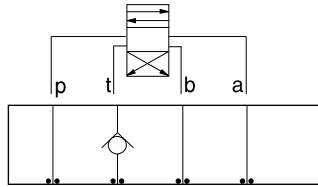
TYPICAL CARTRIDGES USED WITH BODIES SHOWN ABOVE			
	Check Valve, Free Flow Port 1 to Port 2 (Nose-to-Side)		
	CXFA Page 5.08		
OTHER VALVES:			



ISO 05 SANDWICH BODIES



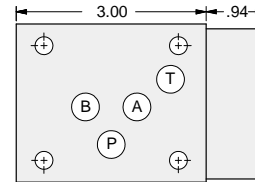
- Aluminum rated to 3000 psi and Ductile Iron rated to 5000 psi.
- See page viii for ordering cartridge/body and seals. Pressure ratings, material specifications on page xiv.



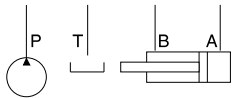
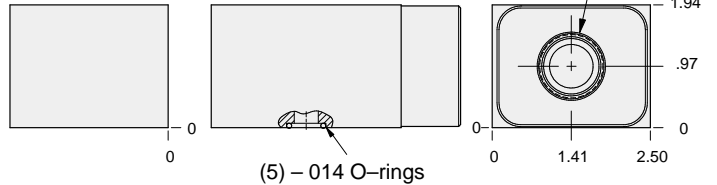
FUNCTION

 On T

Check Valves



T-5A Cavity
 Locating Shoulder
 Depth .06



ALUMINUM		DUCTILE IRON	
Model Code	List Price	Model Code	List Price
DBT		DBT/S	

05 CHECK

TYPICAL CARTRIDGES USED WITH BODIES SHOWN ABOVE			
	Check Valve, Free Flow Port 1 to Port 2 (Nose-to-Side)		
	CXFA Page 5.08		
OTHER VALVES:			