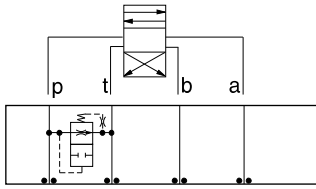




ISO 05 SANDWICH BODIES



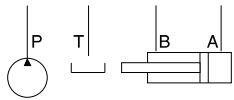
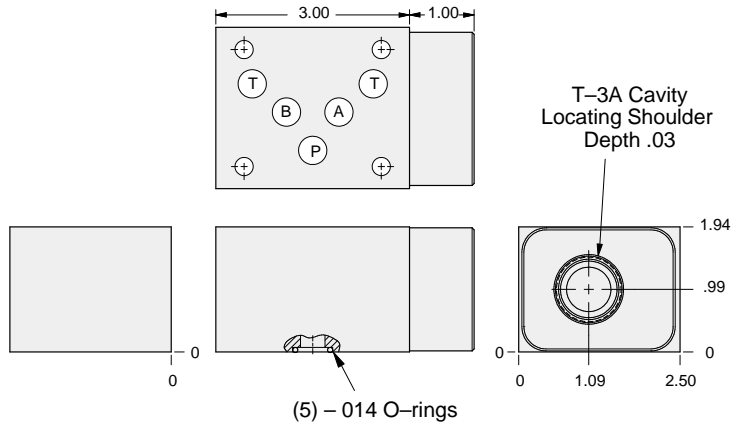
- Aluminum rated to 3000 psi and Ductile Iron rated to 5000 psi.
- See page viii for ordering cartridge/body and seals. Pressure ratings, material specifications on page xiv.



FUNCTION

Air-Bleed and Start-Up

Circuit Savers



ALUMINUM		DUCTILE IRON	
Model Code	List Price	Model Code	List Price
CBP		CBP/S	

05 CIRCUIT SAVER

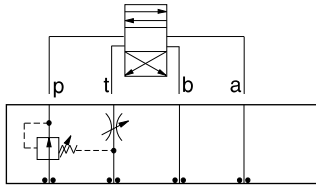
TYPICAL CARTRIDGES USED WITH BODIES SHOWN ABOVE			
	Air Bleed and Start-up Valve		
	NQEB Page 10.16		
OTHER VALVES:			



ISO 05 SANDWICH BODIES



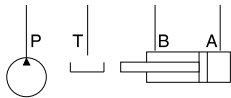
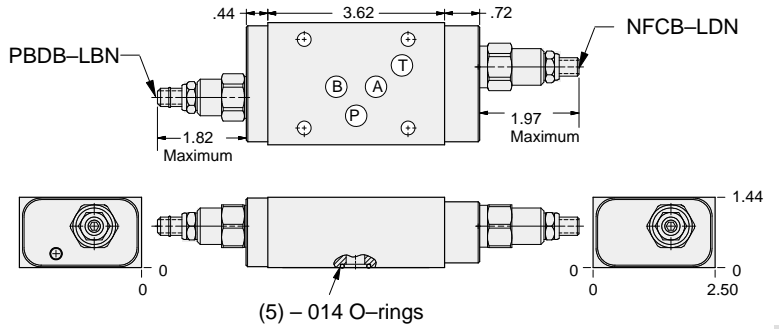
- Aluminum rated to 3000 psi and Ductile Iron rated to 5000 psi.
- See page viii for ordering cartridge/body and seals. Pressure ratings, material specifications on page xiv.



FUNCTION

Pilot Choke

Circuit Savers



ALUMINUM		DUCTILE IRON	
Model Code	List Price	Model Code	List Price
YNAB-LDN-BA		YNAB-LDN-BA/S	

05 CIRCUIT SAVER

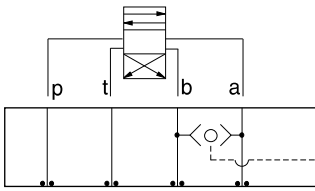


ISO 05 SANDWICH BODIES



- Aluminum rated to 3000 psi and Ductile Iron rated to 5000 psi.
- See page viii for ordering cartridge/body and seals. Pressure ratings, material specifications on page xiv.

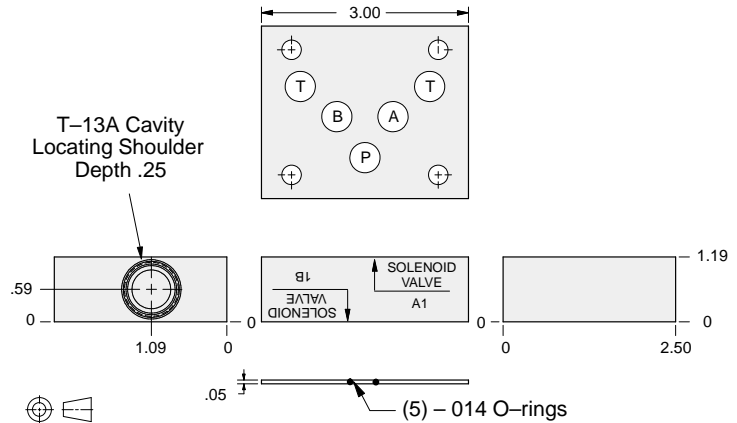
05 CIRCUIT SAVER



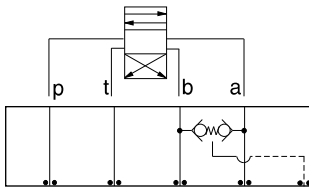
FUNCTION

Shuttle
A and B
Output External

Circuit Savers



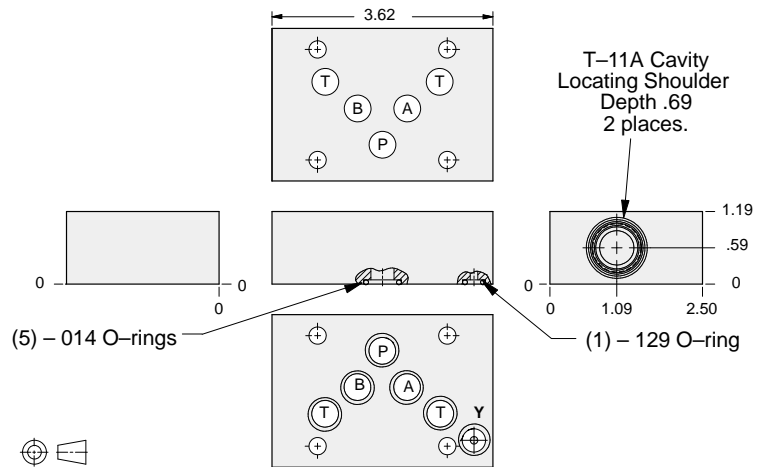
ALUMINUM		DUCTILE IRON	
Model Code	List Price	Model Code	List Price
DBS		DBS/S	



FUNCTION

Checks from
A and B—Adapter
to ISO 05 w/Y Port

Circuit Savers



ALUMINUM		DUCTILE IRON	
Model Code	List Price	Model Code	List Price
BJS		BJS/S	

TYPICAL CARTRIDGES USED WITH BODIES SHOWN ABOVE

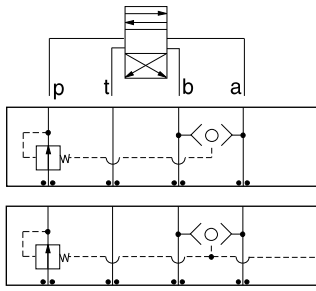
<p>Ext.</p>	2 Port Shuttle Valve, Signal External		
	CSAA Page 10.09 (use with DBS)		
<p>3</p>	3 Port Shuttle Valve, Signal at Port 3		
	CDAB Page 10.10 (use with BJS)		
OTHER VALVES:			



ISO 05 SANDWICH BODIES



- Aluminum rated to 3000 psi and Ductile Iron rated to 5000 psi.
- See page viii for ordering cartridge/body and seals. Pressure ratings, material specifications on page xiv.

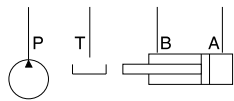
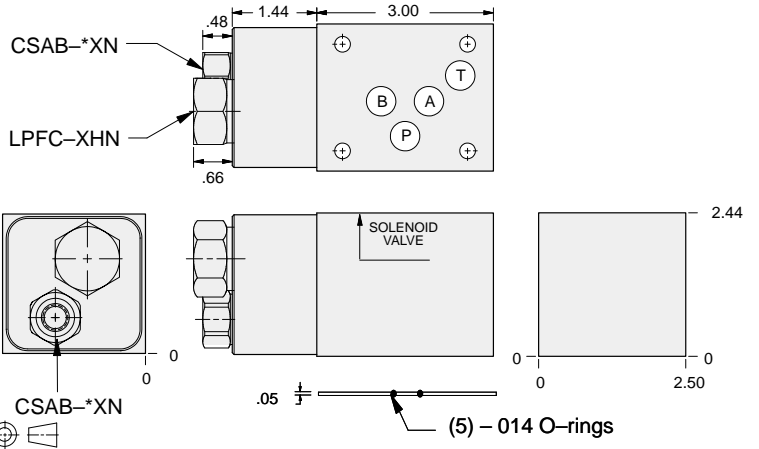


FUNCTION

Pressure Compensator (Restrictive)

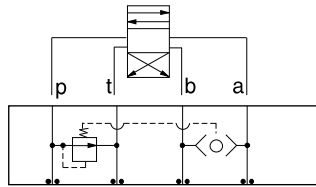
Pressure Compensator (Restrictive) w/Load-Sensing Port

Circuit Savers



Shuttle Cartridge	External Shuttle Port	ALUMINUM		DUCTILE IRON	
		Model Code	List Price	Model Code	List Price
CSAB-XXN	None	YFEJ-XHN-BA		YFEJ-XHN-BA/S	
CSAB-AXN	SAE-4	YFEP-XHN-BA		YFEP-XHN-BA/S	
CSAB-BXN	.25 BSPP	YFEP-XHN-BA/M		YFEP-XHN-BA/T	

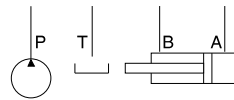
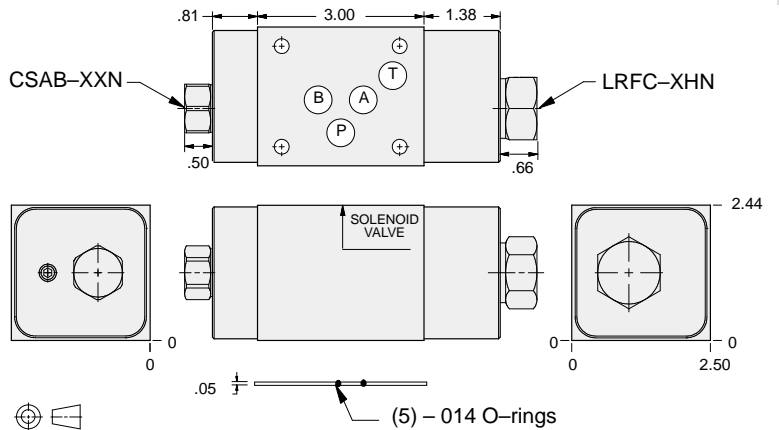
05 CIRCUIT SAVER



FUNCTION

Pressure Compensator (Bypass)

Circuit Savers



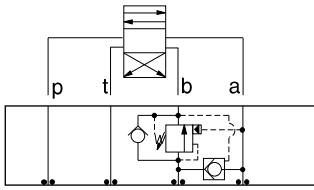
ALUMINUM		DUCTILE IRON	
Model Code	List Price	Model Code	List Price
YFEV-XHN-BA		YFEV-XHN-BA/S	



ISO 05 SANDWICH BODIES



- Aluminum rated to 3000 psi and Ductile Iron rated to 5000 psi.
- See page viii for ordering cartridge/body and seals. Pressure ratings, material specifications on page xiv.

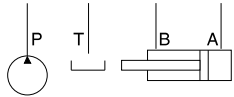
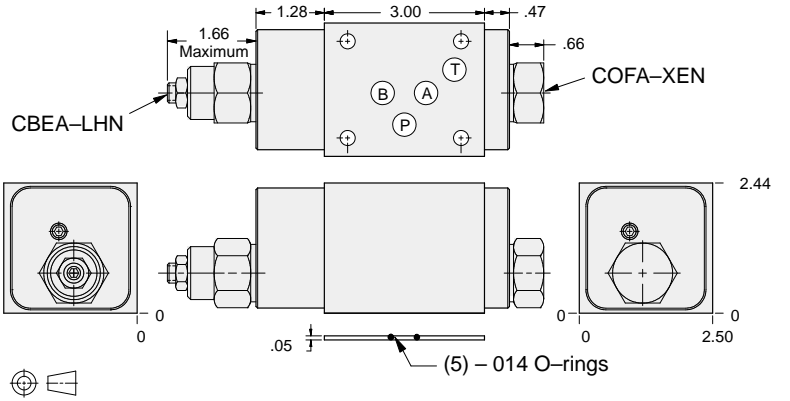


FUNCTION

B to A
Regenerative

Circuit Savers

Turn screw clockwise to reduce setting on CBEA.



ALUMINUM		DUCTILE IRON	
<i>Model Code</i>	<i>List Price</i>	<i>Model Code</i>	<i>List Price</i>
YDES-LHN-BA		YDES-LHN-BA/S	

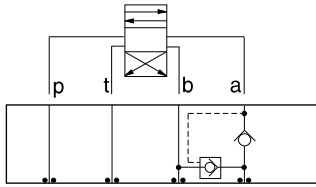
05 CIRCUIT SAVER



ISO 05 SANDWICH BODIES



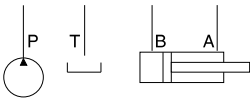
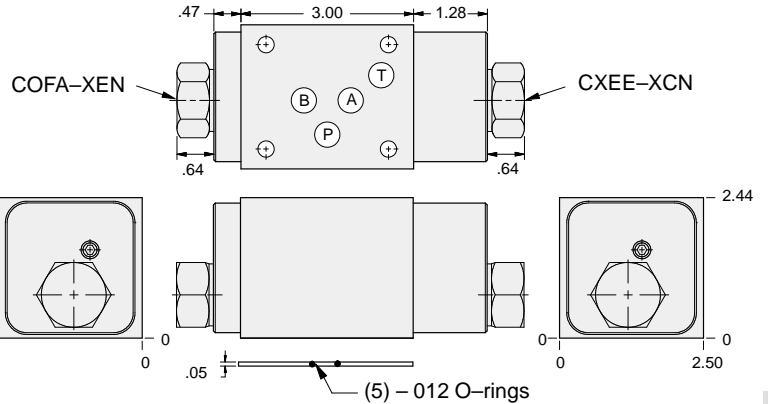
- Aluminum rated to 3000 psi and Ductile Iron rated to 5000 psi.
- See page viii for ordering cartridge/body and seals. Pressure ratings, material specifications on page xiv.



FUNCTION

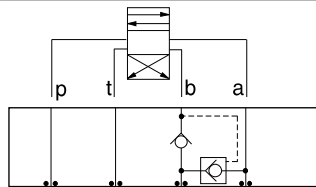
A to B
Regenerative
(Full Time)

Circuit Savers



ALUMINUM		DUCTILE IRON	
Model Code	List Price	Model Code	List Price
YDEV-XCN-BA		YDEV-XCN-BA/S	

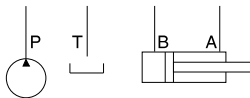
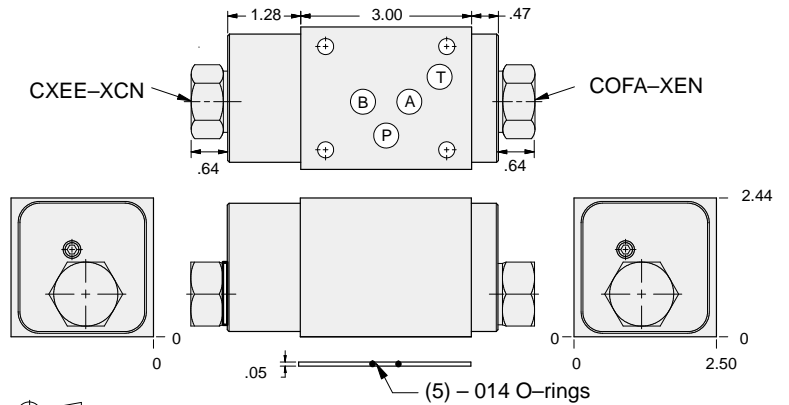
05 CIRCUIT SAVER



FUNCTION

B to A
Regenerative
(Full Time)

Circuit Savers



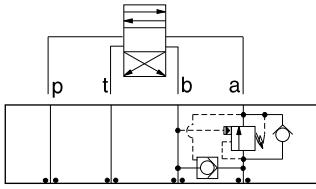
ALUMINUM		DUCTILE IRON	
Model Code	List Price	Model Code	List Price
YDET-XCN-BA		YDET-XCN-BA/S	



ISO 05 SANDWICH BODIES



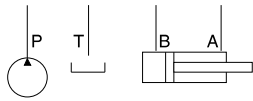
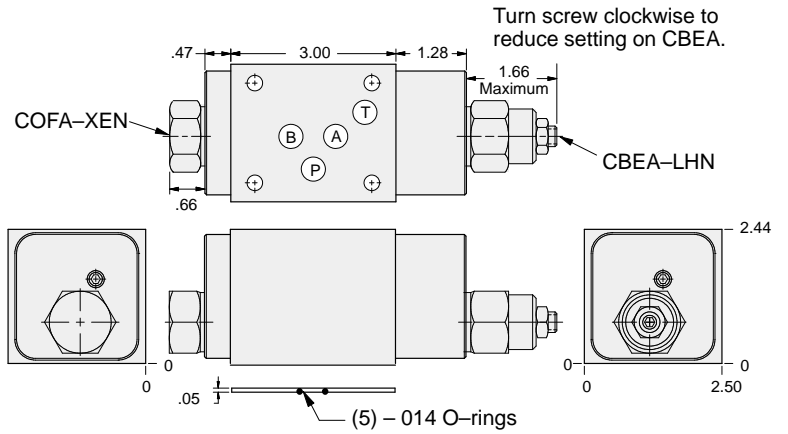
- Aluminum rated to 3000 psi and Ductile Iron rated to 5000 psi.
- See page viii for ordering cartridge/body and seals. Pressure ratings, material specifications on page xiv.



FUNCTION

A to B
Regenerative

Circuit Savers



ALUMINUM		DUCTILE IRON	
Model Code	List Price	Model Code	List Price
YDER-LHN-BA		YDER-LHN-BA/S	

05 CIRCUIT SAVER

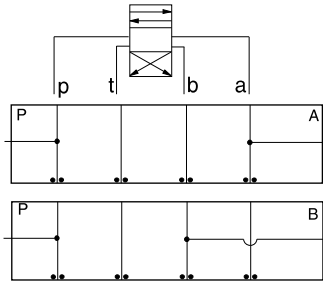


ISO 05 SANDWICH BODIES



- Aluminum rated to 3000 psi and Ductile Iron rated to 5000 psi.
- See page viii for ordering cartridge/body and seals. Pressure ratings, material specifications on page xiv.

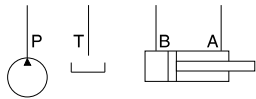
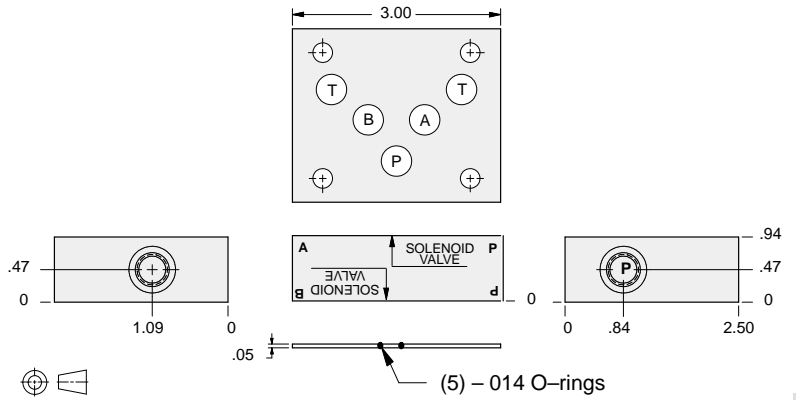
Circuit Savers



FUNCTION

P and A
Tap in Manifold

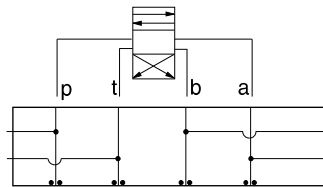
P and B
Tap in Manifold



External Port	ALUMINUM		DUCTILE IRON	
	Model Code	List Price	Model Code	List Price
.25 NPTF	ZXE		ZXE/S	
SAE-4	ZPS		ZPS/S	
.250 BSPP	ZVE		ZVE/S	

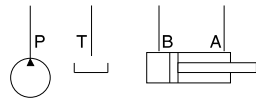
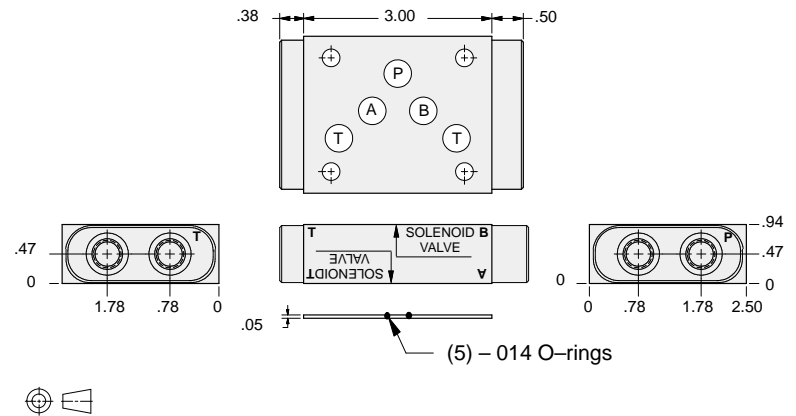
05 CIRCUIT SAVER

Circuit Savers



FUNCTION

P, T, A and B
Tap in Manifold



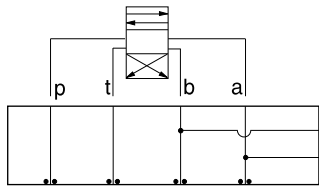
External Port	ALUMINUM		DUCTILE IRON	
	Model Code	List Price	Model Code	List Price
.25 NPTF	ZKL		ZKL/S	
.250 BSPP	ZKM		ZKM/S	
.250 BSPP	ZKK		ZKK/S	



ISO 05 SANDWICH BODIES



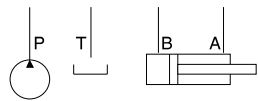
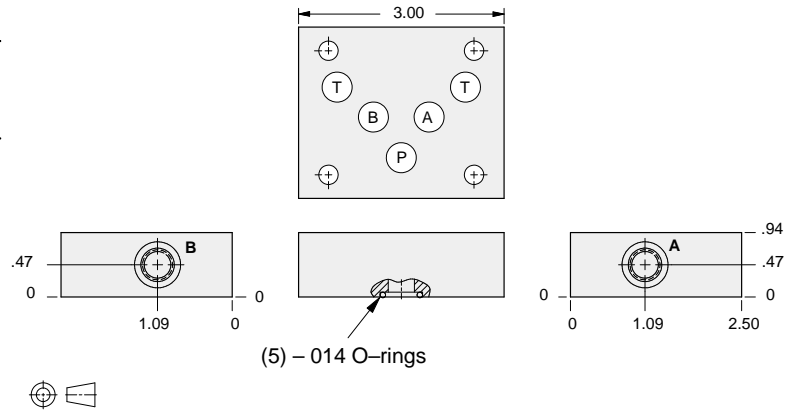
- Aluminum rated to 3000 psi and Ductile Iron rated to 5000 psi.
- See page viii for ordering cartridge/body and seals. Pressure ratings, material specifications on page xiv.



FUNCTION

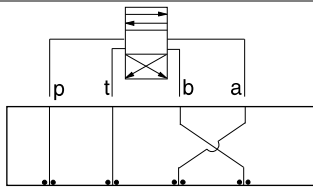
A and B
Tap in Manifold

Circuit Savers



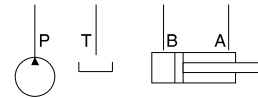
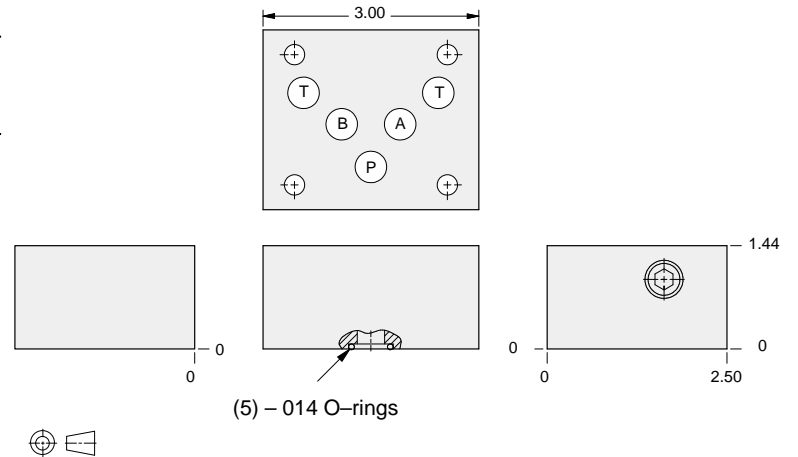
External Ports	ALUMINUM		DUCTILE IRON	
	Model Code	List Price	Model Code	List Price
.25 NPTF	ZXD		ZXD/S	
SAE-4	ZPR		ZPR/S	
.25 BSPP	ZVD		ZVD/S	

Circuit Savers



FUNCTION

Swap Block
Swaps **A** and **B**



ALUMINUM		DUCTILE IRON	
Model Code	List Price	Model Code	List Price
ZTB		ZTB/S	

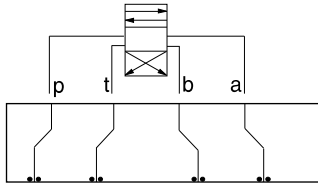
05 CIRCUIT SAVER



ISO 05 SANDWICH BODIES



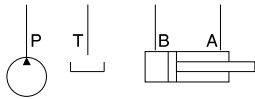
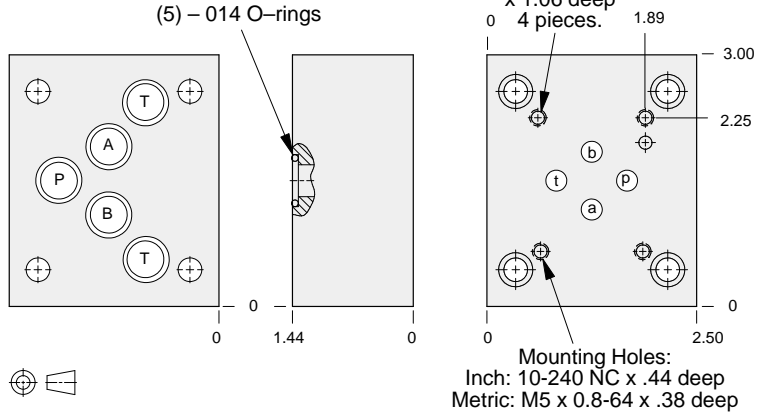
- Aluminum rated to 3000 psi and Ductile Iron rated to 5000 psi.
- See page viii for ordering cartridge/body and seals. Pressure ratings, material specifications on page xiv.



FUNCTION

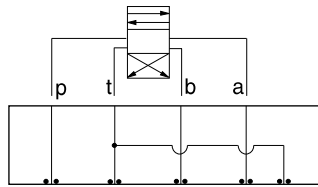
Adapter to Next Smaller Valve Pattern

Circuit Savers



ALUMINUM		DUCTILE IRON	
Model Code	List Price	Model Code	List Price
ZWU		ZWU/S	
ZWT		ZWT/S	

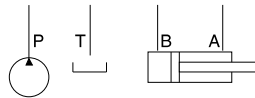
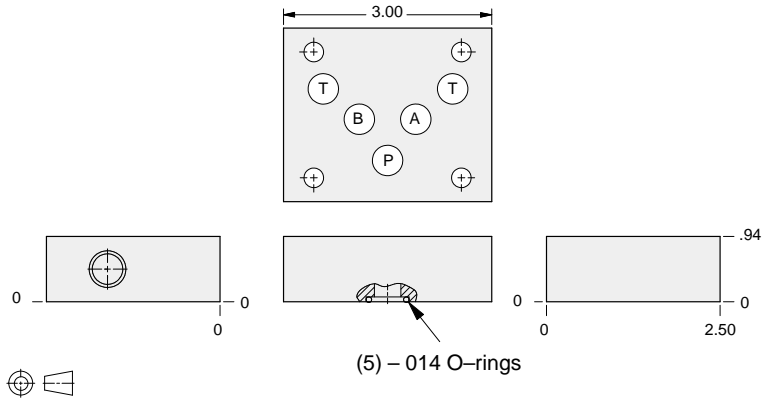
05 CIRCUIT SAVER



FUNCTION

ISO 05 to ISO 05 with Dual Tank Ports

Circuit Savers



ALUMINUM		DUCTILE IRON	
Model Code	List Price	Model Code	List Price
ZXC		ZXC/S	

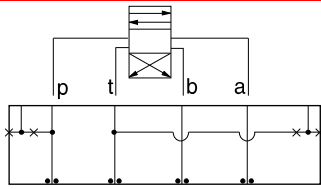


ISO 05 SANDWICH BODIES



- Aluminum rated to 3000 psi and Ductile Iron rated to 5000 psi.
- See page viii for ordering cartridge/body and seals. Pressure ratings, material specifications on page xiv.

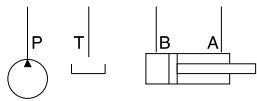
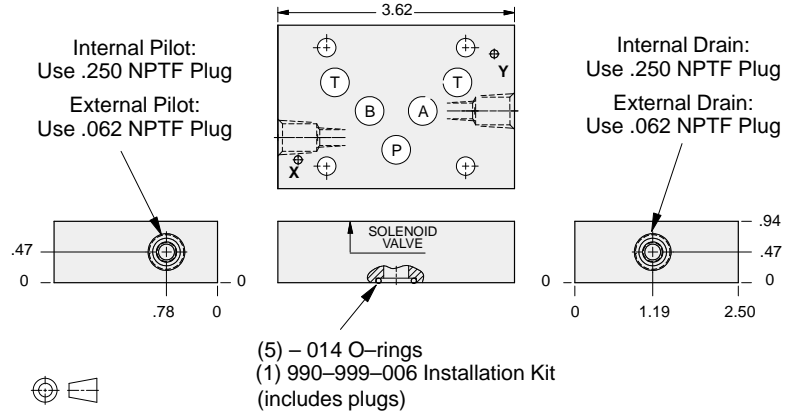
05 CIRCUIT SAVER



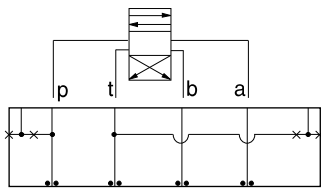
FUNCTION

ISO 05 to ISO 05
with X and Y
Access to X and Y (Amer)

Circuit Savers



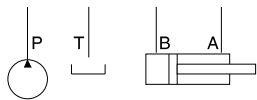
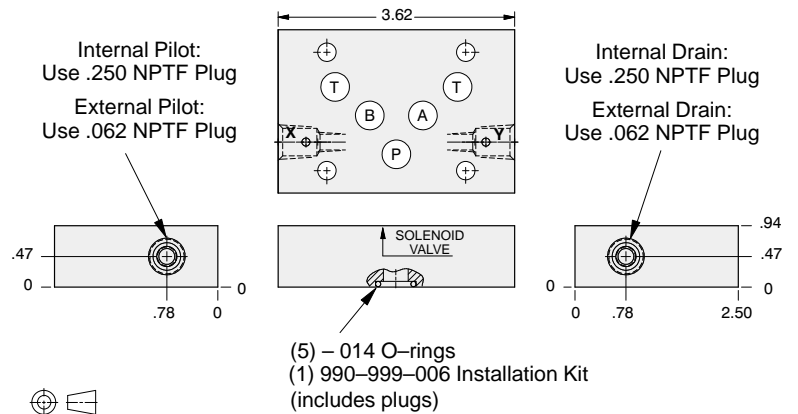
ALUMINUM		DUCTILE IRON	
Model Code	List Price	Model Code	List Price
ZSV		ZSV/S	



FUNCTION

ISO 05 to ISO 05
with X and Y
Access to X and Y (Euro)

Circuit Savers



ALUMINUM		DUCTILE IRON	
Model Code	List Price	Model Code	List Price
ZST		ZST/S	