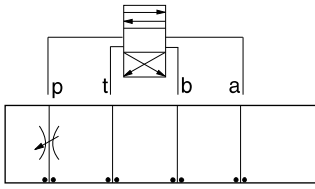




# ISO 05 SANDWICH BODIES



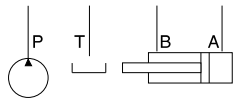
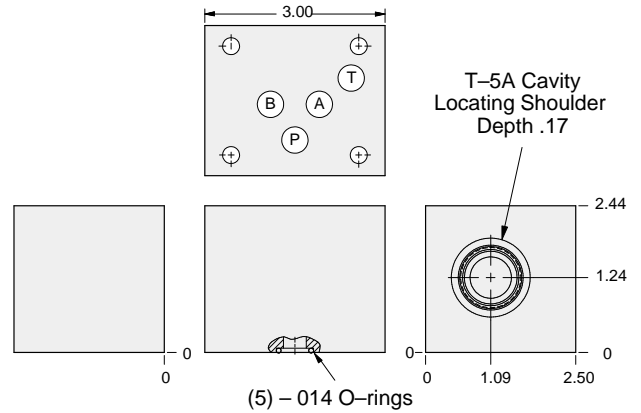
- Aluminum rated to 3000 psi and Ductile Iron rated to 5000 psi.
- See page viii for ordering cartridge/body and seals. Pressure ratings, material specifications on page xiv.



### FUNCTION

Meter-In P

### Flow Control Valves



ALUMINUM		DUCTILE IRON	
<i>Model Code</i>	<i>List Price</i>	<i>Model Code</i>	<i>List Price</i>
<b>DBP</b>		<b>DBP/S</b>	

05 FLOW CONTROL

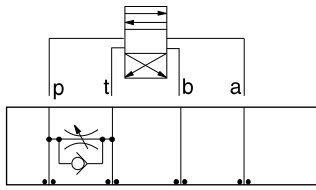
TYPICAL CARTRIDGES USED WITH BODIES SHOWN ABOVE			
	<i>Fully Adjustable Needle Valve</i>		
	<b>NFDC Page 5.12</b>		
	<i>Fixed Orifice, Pressure-Compensated Flow Control</i>		
	<b>FXDA Page 5.20</b>		
<b>OTHER VALVES:</b>			



# ISO 05 SANDWICH BODIES



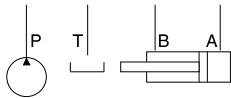
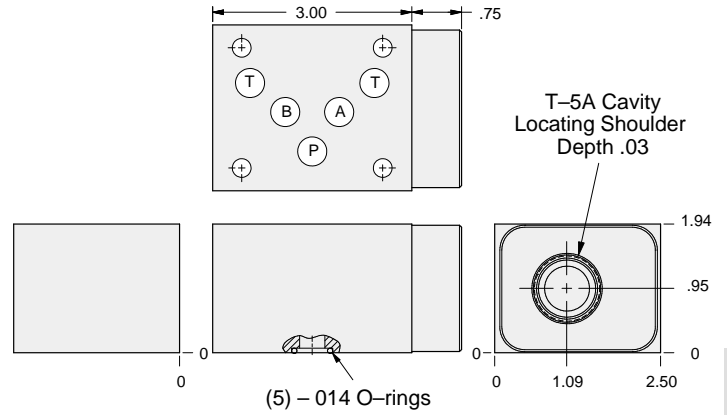
- Aluminum rated to 3000 psi and Ductile Iron rated to 5000 psi.
- See page viii for ordering cartridge/body and seals. Pressure ratings, material specifications on page xiv.



### FUNCTION

Bleed-Off  
P to T

### Flow Control Valves



ALUMINUM		DUCTILE IRON	
Model Code	List Price	Model Code	List Price
<b>DBQ</b>		<b>DBQ/S</b>	

05 FLOW CONTROL

### TYPICAL CARTRIDGES USED WITH BODIES SHOWN ABOVE

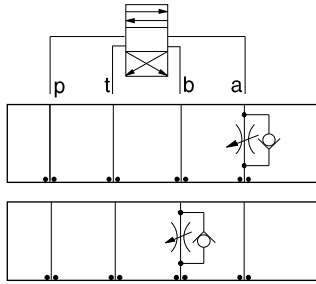
	Fully Adjustable Needle Valve		Fixed Orifice, Pressure-Compensated Flow Control
	NFDC Page 5.12		FXDA Page 5.20
	Fully Adjustable Needle Valve with Reverse Free Flow Check		Fixed Orifice, Pressure-Compensated Flow Control with Reverse Free Flow Check
	NCEB Page 5.16		FCDB Page 5.22
	Fully Adjustable Needle Valve with Reverse Free Flow Check, Low Flow		Fully Adjustable, Pressure-Compensated Flow Control with Reverse Free Flow Check
	NCEC Page 5.18		FDCB Page 5.24
OTHER VALVES:	CNEC		



# ISO 05 SANDWICH BODIES



- Aluminum rated to 3000 psi and Ductile Iron rated to 5000 psi.
- See page viii for ordering cartridge/body and seals. Pressure ratings, material specifications on page xiv.

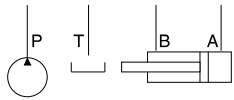
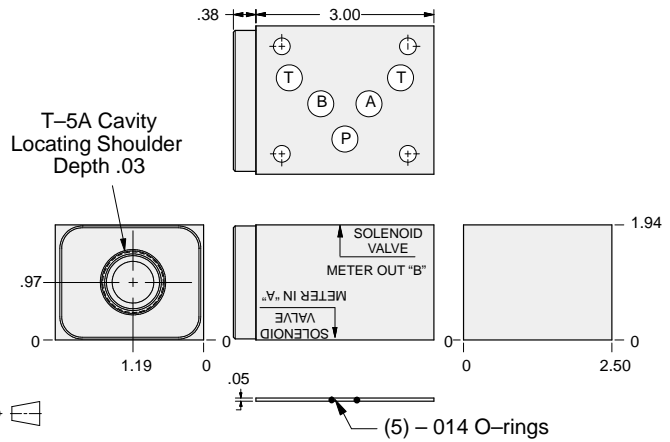


### FUNCTION

Meter-In A

Meter-Out B

### Flow Control Valves



ALUMINUM		DUCTILE IRON	
Model Code	List Price	Model Code	List Price
<b>DBB</b>		<b>DBB/S</b>	

05 FLOW CONTROL

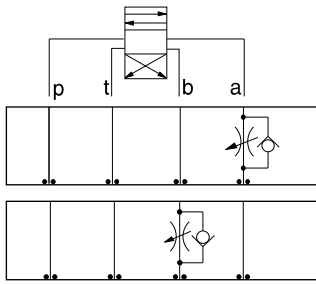
TYPICAL CARTRIDGES USED WITH BODIES SHOWN ABOVE			
	Fully Adjustable Needle Valve with Reverse Free Flow Check NCEB Page 5.16		Fully Adjustable, Pressure-Compensated Flow Control with Reverse Free Flow Check FDCB Page 5.24
	Fully Adjustable Needle Valve with Reverse Free Flow Check, Low Flow NCEC Page 5.18		
	Fixed Orifice, Pressure-Compensated Flow Control with Reverse Free Flow Check FCDB Page 5.22		
<b>OTHER VALVES:</b>	<b>CNEC</b>		



# ISO 05 SANDWICH BODIES



- Aluminum rated to 3000 psi and Ductile Iron rated to 5000 psi.
- See page viii for ordering cartridge/body and seals. Pressure ratings, material specifications on page xiv.

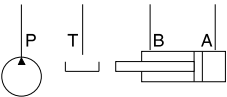
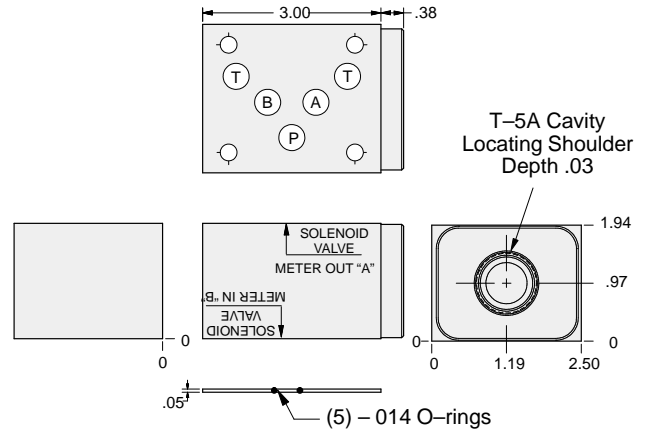


### FUNCTION

Meter-Out A

Meter-In B

### Flow Control Valves



ALUMINUM		DUCTILE IRON	
Model Code	List Price	Model Code	List Price
<b>DBA</b>		<b>DBA/S</b>	

05 FLOW CONTROL

### TYPICAL CARTRIDGES USED WITH BODIES SHOWN ABOVE

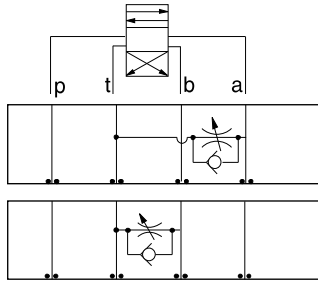
	Fully Adjustable Needle Valve with Reverse Free Flow Check NCEB Page 5.16		Fully Adjustable, Pressure-Compensated Flow Control with Reverse Free Flow Check FDCB Page 5.24
	Fully Adjustable Needle Valve with Reverse Free Flow Check, Low Flow NCEC Page 5.18		
	Fixed Orifice, Pressure-Compensated Flow Control with Reverse Free Flow Check FCDB Page 5.22		
OTHER VALVES:	CNEC		



# ISO 05 SANDWICH BODIES



- Aluminum rated to 3000 psi and Ductile Iron rated to 5000 psi.
- See page viii for ordering cartridge/body and seals. Pressure ratings, material specifications on page xiv.

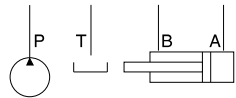
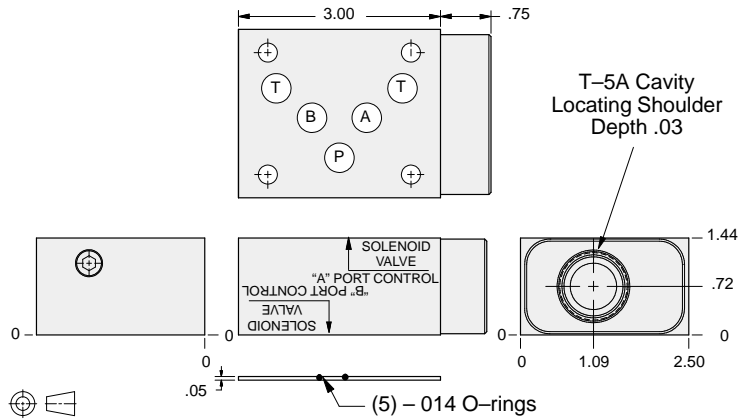


### FUNCTION

Bleed-Off  
A to T

Bleed-Off  
B to T

### Flow Control Valves



ALUMINUM		DUCTILE IRON	
Model Code	List Price	Model Code	List Price
<b>DBC</b>		<b>DBC/S</b>	

05 FLOW CONTROL

### TYPICAL CARTRIDGES USED WITH BODIES SHOWN ABOVE

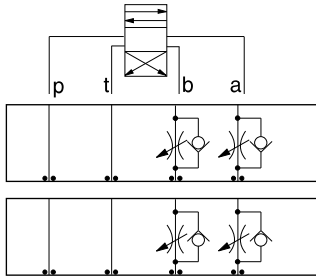
	Fully Adjustable Needle Valve		Fixed Orifice, Pressure-Compensated Flow Control
	NFDC Page 5.12		FXDA Page 5.20
	Fully Adjustable Needle Valve with Reverse Free Flow Check		Fixed Orifice, Pressure-Compensated Flow Control with Reverse Free Flow Check
	NCEB Page 5.16		FCDB Page 5.22
	Fully Adjustable Needle Valve with Reverse Free Flow Check, Low Flow		Fully Adjustable, Pressure-Compensated Flow Control with Reverse Free Flow Check
	NCEC Page 5.18		FDCB Page 5.24
OTHER VALVES:	CNEC		



# ISO 05 SANDWICH BODIES



- Aluminum rated to 3000 psi and Ductile Iron rated to 5000 psi.
- See page viii for ordering cartridge/body and seals. Pressure ratings, material specifications on page xiv.

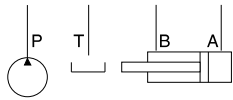
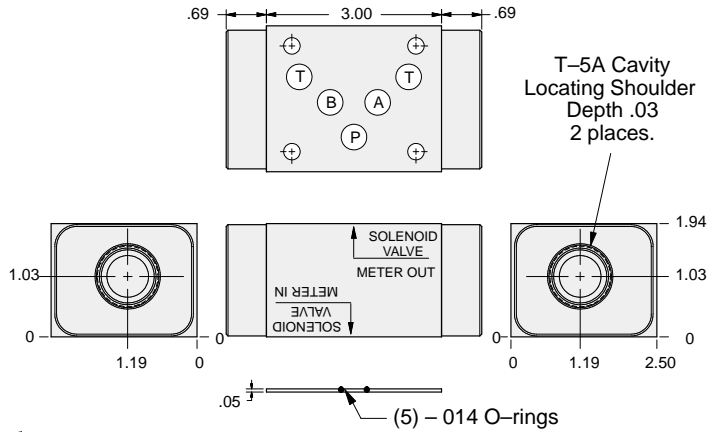


### FUNCTION

Meter-In  
A and B

Meter-Out  
A and B

### Flow Control Valves



ALUMINUM		DUCTILE IRON	
Model Code	List Price	Model Code	List Price
DBY		DBY/S	

05 FLOW CONTROL

### TYPICAL CARTRIDGES USED WITH BODIES SHOWN ABOVE

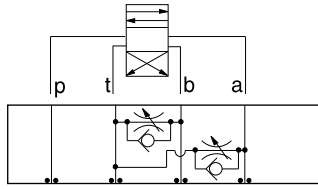
	Fully Adjustable Needle Valve with Reverse Free Flow Check NCEB Page 5.16		Fully Adjustable, Pressure-Compensated Flow Control with Reverse Free Flow Check FDCB Page 5.24
	Fully Adjustable Needle Valve with Reverse Free Flow Check, Low Flow NCEC Page 5.18		
	Fixed Orifice, Pressure-Compensated Flow Control with Reverse Free Flow Check FCDB Page 5.22		
OTHER VALVES:	CNEC		



# ISO 05 SANDWICH BODIES



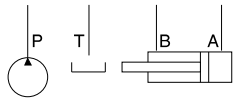
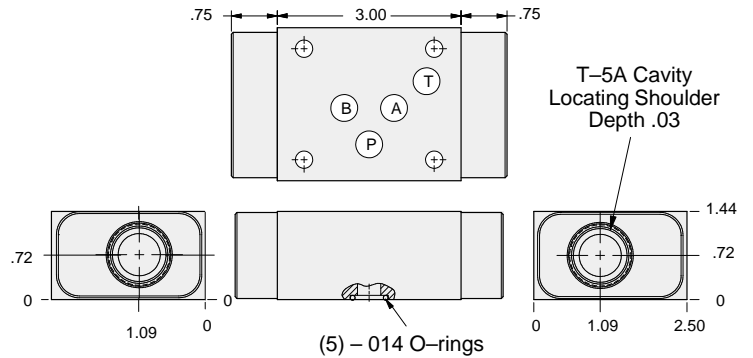
- Aluminum rated to 3000 psi and Ductile Iron rated to 5000 psi.
- See page viii for ordering cartridge/body and seals. Pressure ratings, material specifications on page xiv.



### FUNCTION

Bleed-Off  
A and B to T

### Flow Control Valves



ALUMINUM		DUCTILE IRON	
Model Code	List Price	Model Code	List Price
<b>DBX</b>		<b>DBX/S</b>	

05 FLOW CONTROL

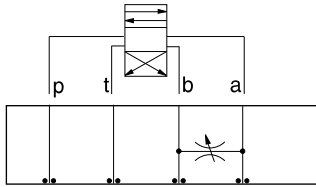
TYPICAL CARTRIDGES USED WITH BODIES SHOWN ABOVE			
	Fully Adjustable Needle Valve NFDC Page 5.12		Fixed Orifice, Pressure-Compensated Flow Control FXDA Page 5.20
	Fully Adjustable Needle Valve with Reverse Free Flow Check NCEB Page 5.16		Fixed Orifice, Pressure-Compensated Flow Control with Reverse Free Flow Check FCDB Page 5.22
	Fully Adjustable Needle Valve with Reverse Free Flow Check, Low Flow NCEC Page 5.18		Fully Adjustable, Pressure-Compensated Flow Control with Reverse Free Flow Check FDCB Page 5.24
<b>OTHER VALVES:</b>	CNEC		



# ISO 05 SANDWICH BODIES



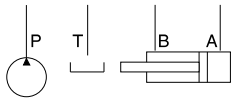
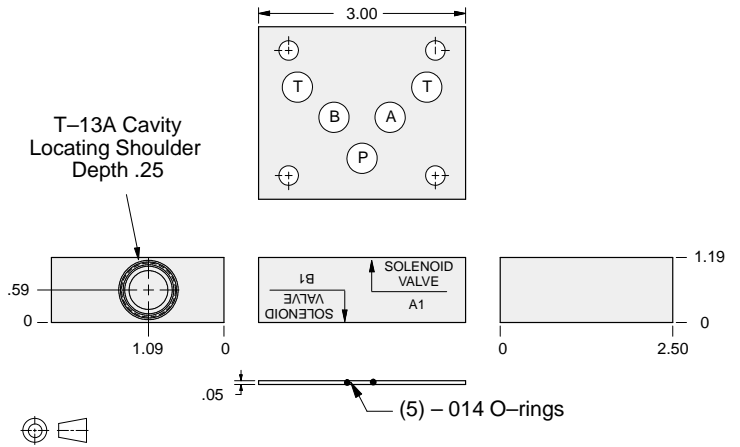
- Aluminum rated to 3000 psi and Ductile Iron rated to 5000 psi.
- See page viii for ordering cartridge/body and seals. Pressure ratings, material specifications on page xiv.



### FUNCTION

Bleed-Off  
A to B and  
B to A

### Flow Control Valves



ALUMINUM		DUCTILE IRON	
Model Code	List Price	Model Code	List Price
<b>DBS</b>		<b>DBS/S</b>	

05 FLOW CONTROL

### TYPICAL CARTRIDGES USED WITH BODIES SHOWN ABOVE

	Fully Adjustable Needle Valve		
	NFDC Page 5.12		
OTHER VALVES:	CNEC		

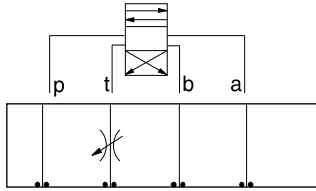




# ISO 05 SANDWICH BODIES



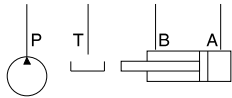
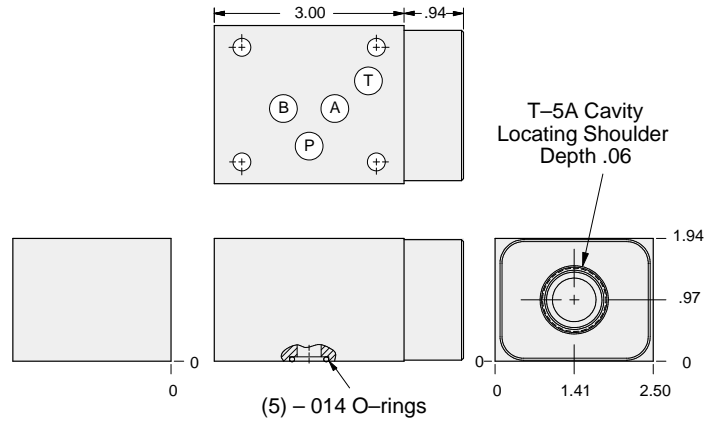
- Aluminum rated to 3000 psi and Ductile Iron rated to 5000 psi.
- See page viii for ordering cartridge/body and seals. Pressure ratings, material specifications on page xiv.



### FUNCTION

Meter-Out T

### Flow Control Valves



ALUMINUM		DUCTILE IRON	
Model Code	List Price	Model Code	List Price
DBT		DBT/S	

05 FLOW CONTROL

TYPICAL CARTRIDGES USED WITH BODIES SHOWN ABOVE			
	Fully Adjustable Needle Valve		Fixed Orifice, Pressure-Compensated Flow Control
	NFDC Page 5.12		FXDA Page 5.20
	Fully Adjustable Needle Valve with Reverse Free Flow Check		Fixed Orifice, Pressure-Compensated Flow Control with Reverse Free Flow Check
	NCEB Page 5.16		FCDB Page 5.22
	Fully Adjustable Needle Valve with Reverse Free Flow Check, Low Flow		Fully Adjustable, Pressure-Compensated Flow Control with Reverse Free Flow Check
	NCEC Page 5.18		FDCB Page 5.24
OTHER VALVES:	CNEC		