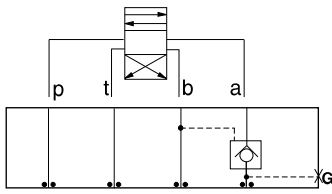




# ISO 05 SANDWICH BODIES



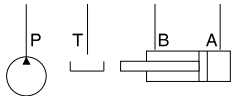
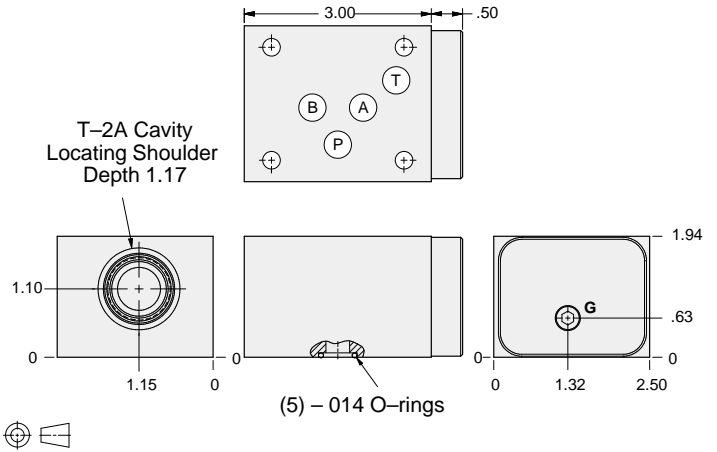
- Aluminum rated to 3000 psi and Ductile Iron rated to 5000 psi.
- See page viii for ordering cartridge/body and seals. Pressure ratings, material specifications on page xiv.



### FUNCTION

On A  
Pilot from B

### Pilot Operated Check Valves



Gage Port (Plugged)	ALUMINUM		DUCTILE IRON	
	Model Code	List Price	Model Code	List Price
.25 NPTF	<b>BBA</b>		<b>BBA/S</b>	
.25 BSPP	<b>BBA/M</b>		<b>BBA/T</b>	

**05 P.O. CHECK**

TYPICAL CARTRIDGES USED WITH BODIES SHOWN ABOVE			
	<i>Pilot-to-Open Check Valve, 3:1 Pilot Ratio</i>		
	<b>CKEB Page 4.16</b>		
<b>OTHER VALVES:</b>			

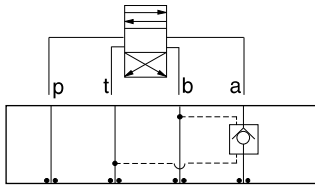


# ISO 05 SANDWICH BODIES



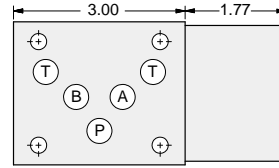
- Aluminum rated to 3000 psi and Ductile Iron rated to 5000 psi.
- See page viii for ordering cartridge/body and seals. Pressure ratings, material specifications on page xiv.

## Pilot Operated Check Valves

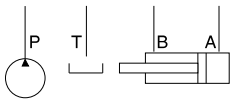
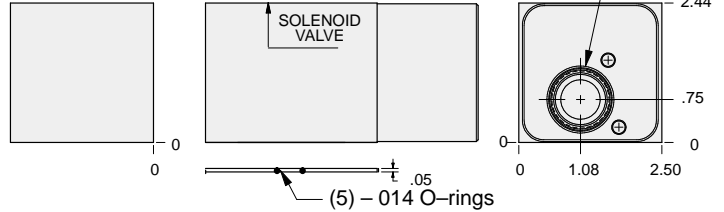


### FUNCTION

On **A**  
Pilot from **B**  
Vent to **T**

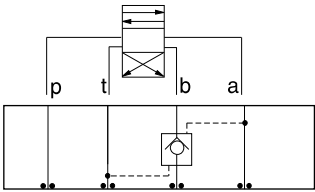


T-22A Cavity  
Locating Shoulder  
Depth 1.31



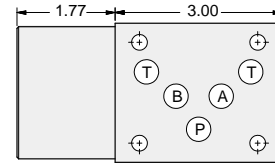
ALUMINUM		DUCTILE IRON	
Model Code	List Price	Model Code	List Price
<b>NBA</b>		<b>NBA/S</b>	

## Pilot Operated Check Valves

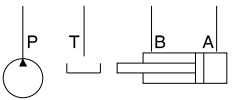
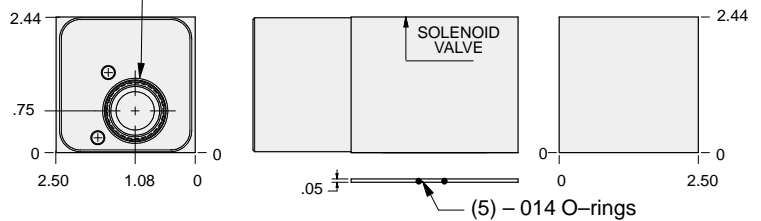


### FUNCTION

On **B**  
Pilot from **A**  
Vent to **T**



T-22A Cavity  
Locating Shoulder  
Depth 1.31



ALUMINUM		DUCTILE IRON	
Model Code	List Price	Model Code	List Price
<b>NBB</b>		<b>NBB/S</b>	

### TYPICAL CARTRIDGES USED WITH BODIES SHOWN ABOVE

	Vented Pilot-to-Open Check Valve, 3:1 Pilot Ratio		
	<b>CVEV Page 4.22</b>		
<b>OTHER VALVES:</b>			

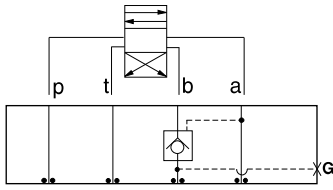


# ISO 05 SANDWICH BODIES



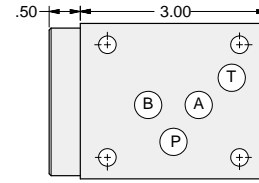
- Aluminum rated to 3000 psi and Ductile Iron rated to 5000 psi.
- See page viii for ordering cartridge/body and seals. Pressure ratings, material specifications on page xiv.

## Pilot Operated Check Valves

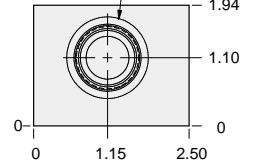
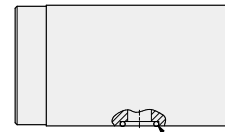
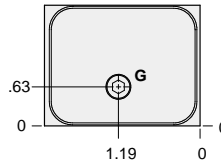


### FUNCTION

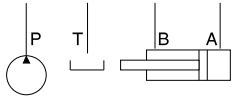
On B  
Pilot from A



T-2A Cavity  
Locating Shoulder  
Depth 1.17



(5) - 014 O-rings



Gage Port (Plugged)	ALUMINUM		DUCTILE IRON	
	Model Code	List Price	Model Code	List Price
.25 NPTF	<b>BBB</b>		<b>BBB/S</b>	
.25 BSPP	<b>BBB/M</b>		<b>BBB/T</b>	

05 P.O. CHECK

TYPICAL CARTRIDGES USED WITH BODIES SHOWN ABOVE			
	<i>Pilot-to-Open Check Valve, 3:1 Pilot Ratio</i>		
	<b>CKEB Page 4.16</b>		
<b>OTHER VALVES:</b>			

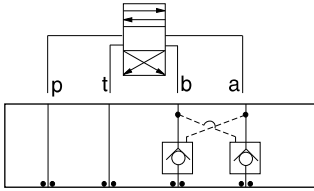


# ISO 05 SANDWICH BODIES



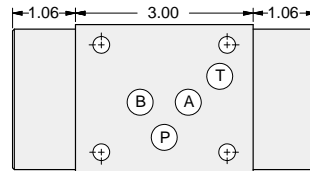
- Aluminum rated to 3000 psi and Ductile Iron rated to 5000 psi.
- See page viii for ordering cartridge/body and seals. Pressure ratings, material specifications on page xiv.

## Pilot Operated Check Valves

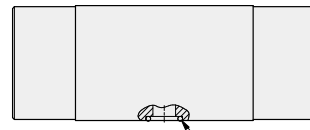
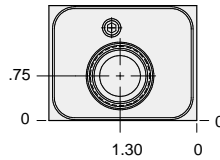


### FUNCTION

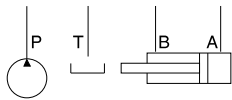
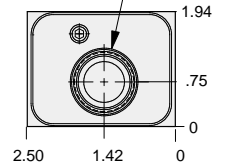
On A and B  
Cross-Piloted



T-2A Cavity  
Locating Shoulder  
Depth .69  
2 places.



(5) - 014 O-rings



ALUMINUM		DUCTILE IRON	
Model Code	List Price	Model Code	List Price
<b>BBY</b>		<b>BBY/S</b>	

05 P.O. CHECK

TYPICAL CARTRIDGES USED WITH BODIES SHOWN ABOVE			
	<i>Pilot-to-Open Check Valve, 3:1 Pilot Ratio</i>		
	<b>CKEB Page 4.16</b>		
<b>OTHER VALVES:</b>			

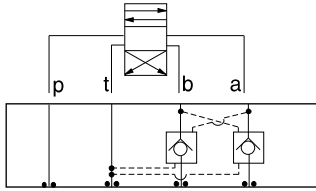


# ISO 05 SANDWICH BODIES



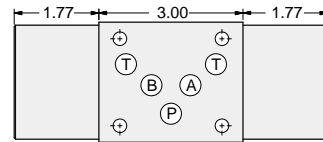
- Aluminum rated to 3000 psi and Ductile Iron rated to 5000 psi.
- See page viii for ordering cartridge/body and seals. Pressure ratings, material specifications on page xiv.

## Pilot Operated Check Valves

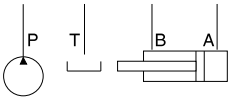
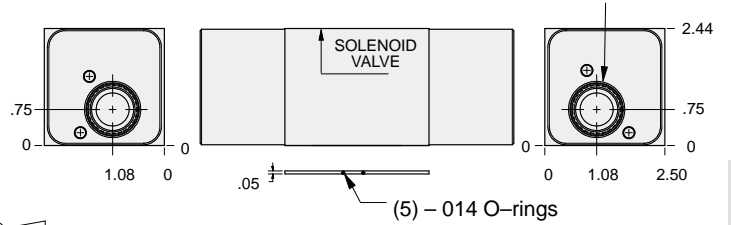


### FUNCTION

On **A** and **B**  
Cross-Piloted  
Vents to **T**



T-22A Cavity  
Locating Shoulder  
Depth 1.31  
2 places.



ALUMINUM		DUCTILE IRON	
Model Code	List Price	Model Code	List Price
<b>NBY</b>		<b>NBY/S</b>	

**05 P.O. CHECK**

TYPICAL CARTRIDGES USED WITH BODIES SHOWN ABOVE			
	Vented Pilot-to-Open Check Valve, 3:1 Pilot Ratio		
	<b>CVEV Page 4.22</b>		
<b>OTHER VALVES:</b>			