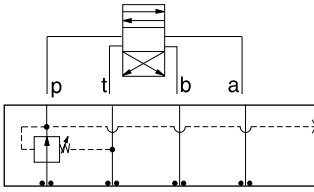




# ISO 05 SANDWICH BODIES



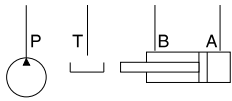
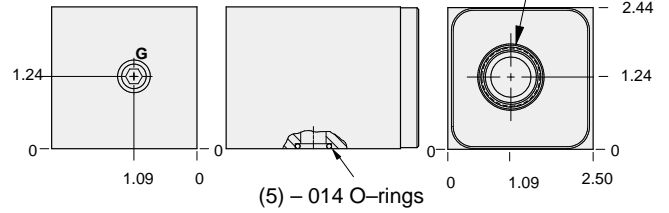
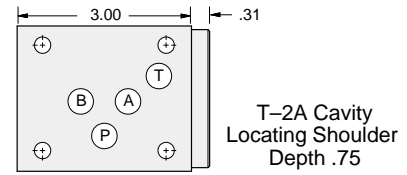
- Aluminum rated to 3000 psi and Ductile Iron rated to 5000 psi.
- See page viii for ordering cartridge/body and seals. Pressure ratings, material specifications on page xiv.



### FUNCTION

G On P  
Drained to T

### Reducing Valves



Gage Port (Plugged)	ALUMINUM		DUCTILE IRON	
	Model Code	List Price	Model Code	List Price
.25 NPTF	<b>BBP</b>		<b>BBP/S</b>	
.25 BSPP	<b>BBP/M</b>		<b>BBP/T</b>	

05 REDUCING

### TYPICAL CARTRIDGES USED WITH BODIES SHOWN ABOVE

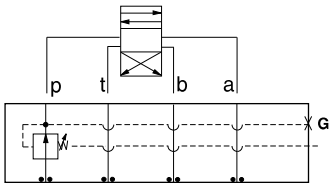
	<i>Pilot Operated Reducing Valve</i>		
	<b>PBFB Page 3.06</b>		
	<i>Air Controlled, Pilot Operated Reducing Valve</i>		
	<b>PBFC Page 3.08</b>		
<b>OTHER VALVES:</b>			



# ISO 05 SANDWICH BODIES



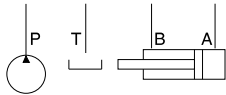
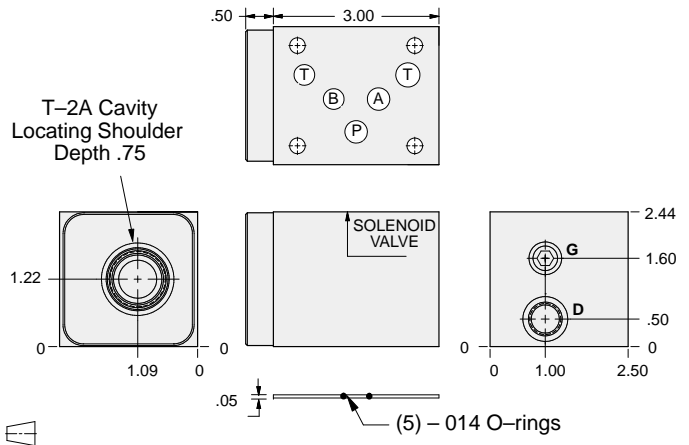
- Aluminum rated to 3000 psi and Ductile Iron rated to 5000 psi.
- See page viii for ordering cartridge/body and seals. Pressure ratings, material specifications on page xiv.



### FUNCTION

On P  
Drained Externally

### Reducing Valves



Gage Port (Plugged)	Drain Port	ALUMINUM		DUCTILE IRON	
		Model Code	List Price	Model Code	List Price
.25 NPTF	SAE-6	<b>BBQ</b>		<b>BBQ/S</b>	
.25 BSPP	.25 BSPP	<b>BBQ/M</b>		<b>BBQ/T</b>	

05 REDUCING

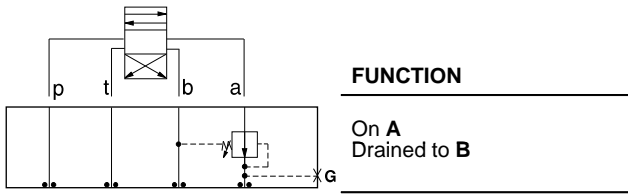
TYPICAL CARTRIDGES USED WITH BODIES SHOWN ABOVE			
	Pilot Operated Reducing Valve		
	PBFB Page 3.06		
	Air Controlled, Pilot Operated Reducing Valve		
	PBFC Page 3.08		
OTHER VALVES:			



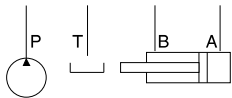
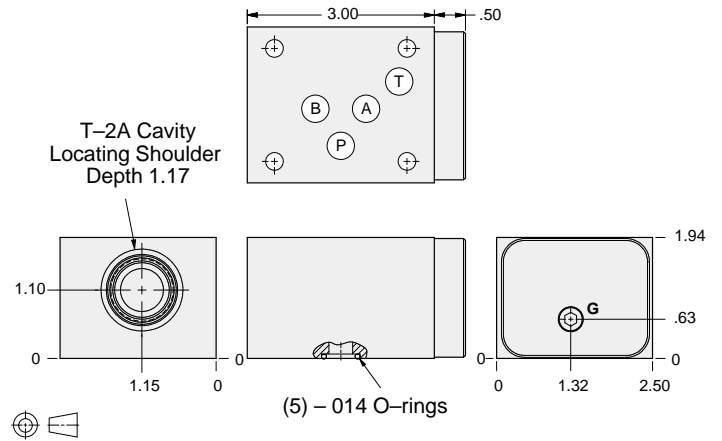
# ISO 05 SANDWICH BODIES



- Aluminum rated to 3000 psi and Ductile Iron rated to 5000 psi.
- See page viii for ordering cartridge/body and seals. Pressure ratings, material specifications on page xiv.



## Reducing Valves



Gage Port (Plugged)	ALUMINUM		DUCTILE IRON	
	Model Code	List Price	Model Code	List Price
.25 NPTF	<b>BBA</b>		<b>BBA/S</b>	
.25 BSPP	<b>BBA/M</b>		<b>BBA/T</b>	

05 REDUCING

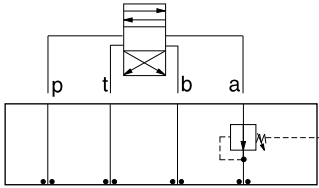
TYPICAL CARTRIDGES USED WITH BODIES SHOWN ABOVE			
	Pilot Operated Reducing Valve		
	<b>PBFB Page 3.06</b>		
	Air Controlled, Pilot Operated Reducing Valve		
	<b>PBFC Page 3.08</b>		
<b>OTHER VALVES:</b>			



# ISO 05 SANDWICH BODIES



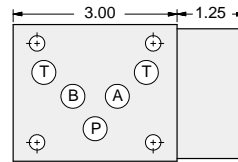
- Aluminum rated to 3000 psi and Ductile Iron rated to 5000 psi.
- See page viii for ordering cartridge/body and seals. Pressure ratings, material specifications on page xiv.



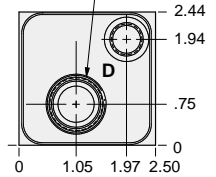
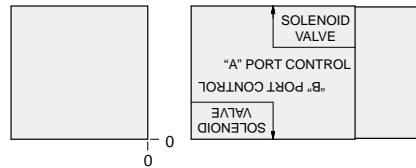
### FUNCTION

On **A**  
Drained Externally

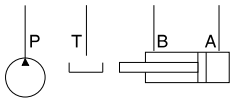
### Reducing Valves



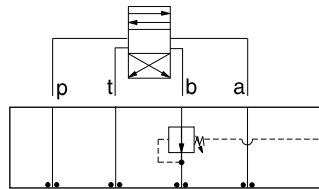
T-2A Cavity  
Locating Shoulder  
Depth .72



.05  $\frac{1}{16}$  (5) - 014 O-rings



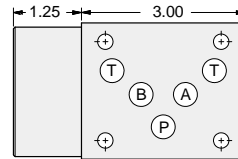
Drain Port	ALUMINUM		DUCTILE IRON	
	Model Code	List Price	Model Code	List Price
SAE-6	<b>BBF</b>		<b>BBF/S</b>	
.25 BSPP	<b>BBF/M</b>		<b>BBF/T</b>	



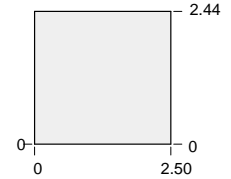
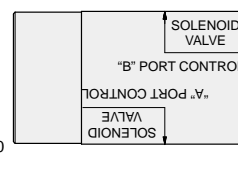
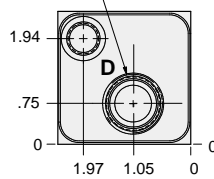
### FUNCTION

On **B**  
Drained Externally

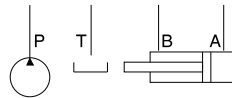
### Reducing Valves



T-2A Cavity  
Locating Shoulder  
Depth .72



.05  $\frac{1}{16}$  (5) - 014 O-rings



Drain Port	ALUMINUM		DUCTILE IRON	
	Model Code	List Price	Model Code	List Price
SAE-6	<b>BBG</b>		<b>BBG/S</b>	
.25 BSPP	<b>BBG/M</b>		<b>BBG/T</b>	

### TYPICAL CARTRIDGES USED WITH BODIES SHOWN ABOVE

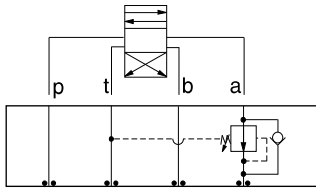
	Pilot Operated Reducing Valve		
	<b>PBFB Page 3.06</b>		
	Air Controlled, Pilot Operated Reducing Valve		
	<b>PBFC Page 3.08</b>		
<b>OTHER VALVES:</b>			



# ISO 05 SANDWICH BODIES



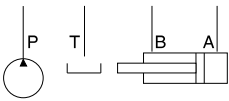
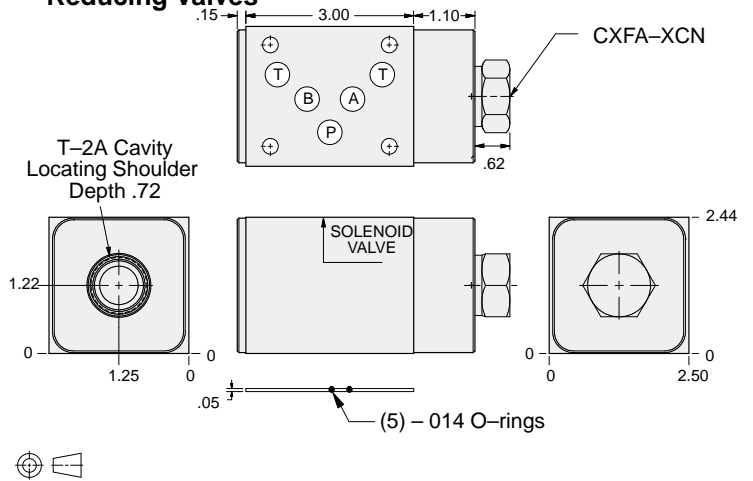
- Aluminum rated to 3000 psi and Ductile Iron rated to 5000 psi.
- See page viii for ordering cartridge/body and seals. Pressure ratings, material specifications on page xiv.



### FUNCTION

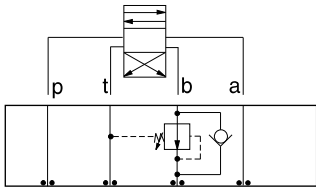
On A Drain to T  
Reverse FF Check

### Reducing Valves



ALUMINUM		DUCTILE IRON	
Model Code	List Price	Model Code	List Price
<b>BB2</b>		<b>BB2/S</b>	

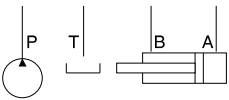
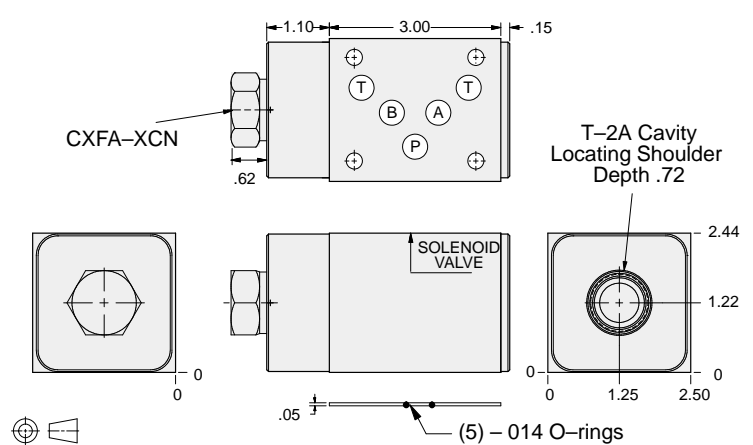
05 REDUCING



### FUNCTION

On B Drain to T  
Reverse FF Check

### Reducing Valves



ALUMINUM		DUCTILE IRON	
Model Code	List Price	Part Number	List Price
<b>BB3</b>		<b>BB3/S</b>	

### TYPICAL CARTRIDGES USED WITH BODIES SHOWN ABOVE

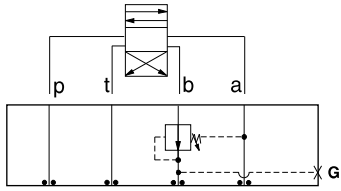
	Pilot Operated Reducing Valve		
	<b>PBFB Page 3.06</b>		
	Air Controlled, Pilot Operated Reducing Valve		
	<b>PBFC Page 3.08</b>		
<b>OTHER VALVES:</b>			



# ISO 05 SANDWICH BODIES



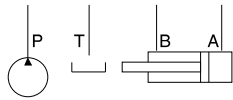
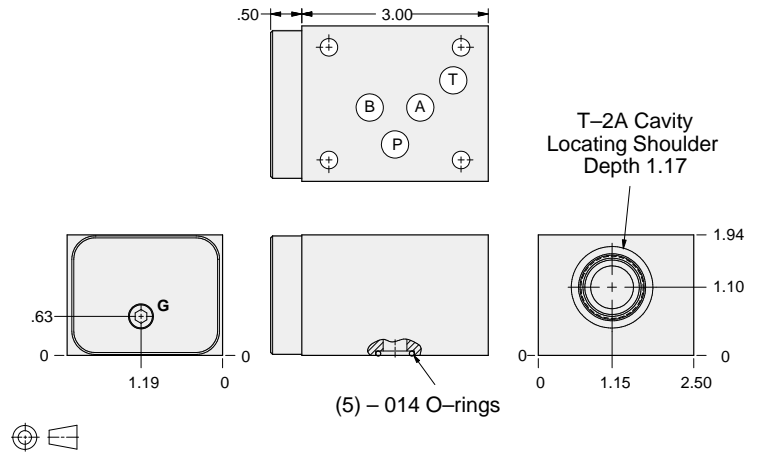
- Aluminum rated to 3000 psi and Ductile Iron rated to 5000 psi.
- See page viii for ordering cartridge/body and seals. Pressure ratings, material specifications on page xiv.



### FUNCTION

On **B**  
Drained to **A**

### Reducing Valves



Gage Port (Plugged)	ALUMINUM		DUCTILE IRON	
	Model Code	List Price	Model Code	List Price
.25 NPTF	<b>BBB</b>		<b>BBB/S</b>	
.25 BSPP	<b>BBB/M</b>		<b>BBB/T</b>	

05 REDUCING

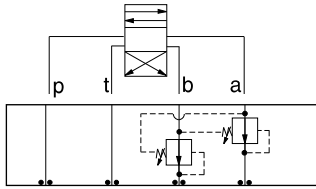
TYPICAL CARTRIDGES USED WITH BODIES SHOWN ABOVE			
	Pilot Operated Reducing Valve		
	PBFB Page 3.06		
OTHER VALVES:			



# ISO 05 SANDWICH BODIES



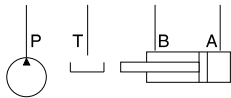
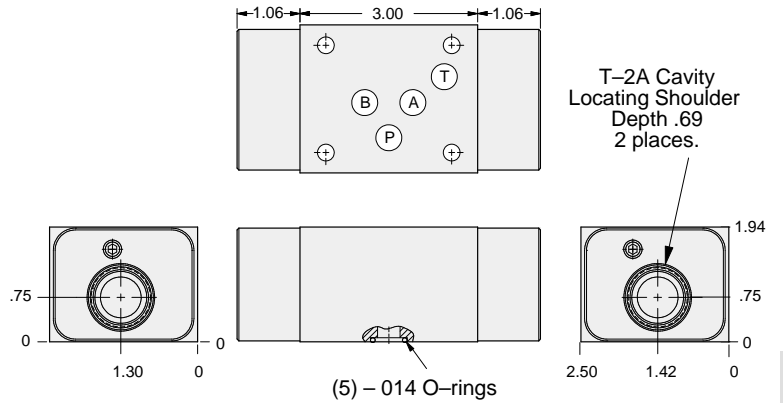
- Aluminum rated to 3000 psi and Ductile Iron rated to 5000 psi.
- See page viii for ordering cartridge/body and seals. Pressure ratings, material specifications on page xiv.



### FUNCTION

On A and B  
Drains to Opposite Port

### Reducing Valves



ALUMINUM		DUCTILE IRON	
Model Code	List Price	Model Code	List Price
<b>BBY</b>		<b>BBY/S</b>	

05 REDUCING

### TYPICAL CARTRIDGES USED WITH BODIES SHOWN ABOVE

	Pilot Operated Reducing Valve		
	PBFB Page 3.06		
<b>OTHER VALVES:</b>			