

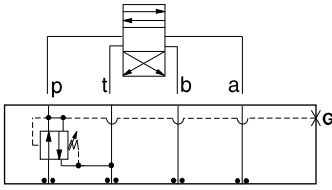


# ISO 05 SANDWICH BODIES



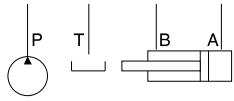
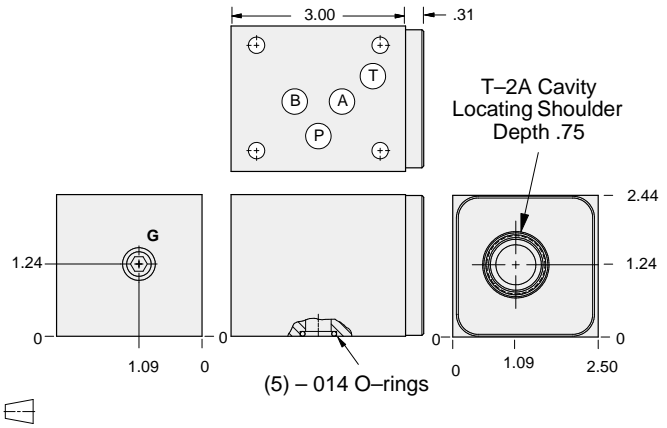
- Aluminum rated to 3000 psi and Ductile Iron rated to 5000 psi.
- See page viii for ordering cartridge/body and seals. Pressure ratings, material specifications on page xiv.

## Reducing/Relieving Valves



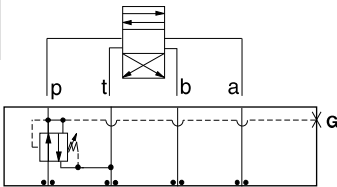
### FUNCTION

On P Tank to T  
Drained to T



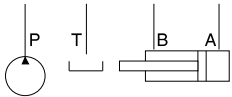
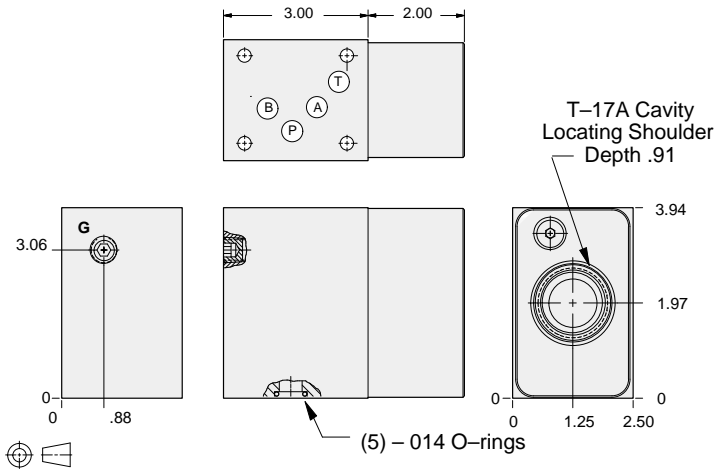
Gage Port (Plugged)	ALUMINUM		DUCTILE IRON	
	Model Code	List Price	Model Code	List Price
.25 NPTF	<b>BBP</b>		<b>BBP/S</b>	
.25 BSPP	<b>BBP/M</b>		<b>BBP/T</b>	

## Reducing/Relieving Valves



### FUNCTION

On P Tank to T  
Drained to T  
(High Capacity)



Gage Port (Plugged)	ALUMINUM		DUCTILE IRON	
	Model Code	List Price	Model Code	List Price
.25 NPTF	<b>WCC</b>		<b>WCC/S</b>	
.25 BSPP	<b>WCC/M</b>		<b>WCC/T</b>	

### TYPICAL CARTRIDGES USED WITH BODIES SHOWN ABOVE

	<i>Pilot Operated Reducing/Relieving Valve</i>		
	<b>PP*B Page 3.10, 3.11</b>		
	<i>Air Controlled, Pilot Operated Reducing/Relieving Valve</i>		
	<b>PP*C Page 3.12, 3.13</b>		
<b>OTHER VALVES:</b>			

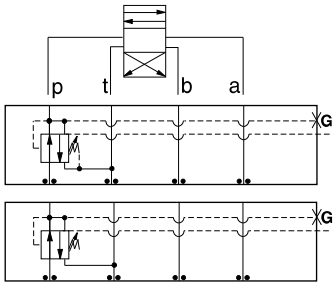


# ISO 05 SANDWICH BODIES



- Aluminum rated to 3000 psi and Ductile Iron rated to 5000 psi.
- See page viii for ordering cartridge/body and seals. Pressure ratings, material specifications on page xiv.

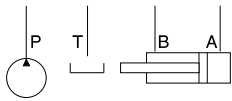
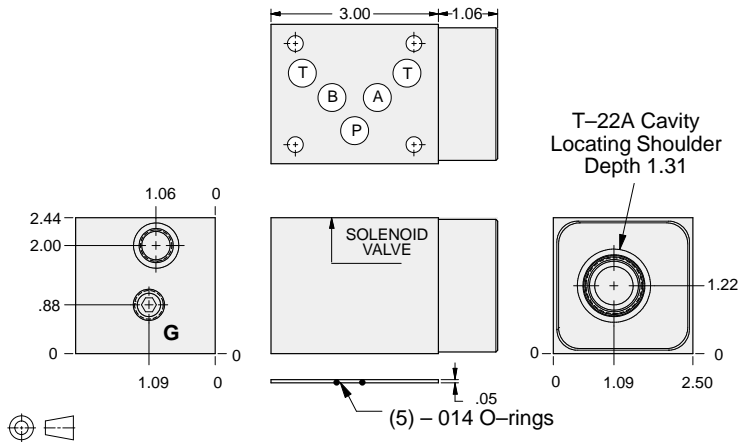
## Reducing/Relieving Valves



### FUNCTION

On P Tank to T  
Vented Externally

On P Tank to T  
Drained Externally



Gage Port (Plugged)	External Port	ALUMINUM		DUCTILE IRON	
		Model Code	List Price	Model Code	List Price
.25 NPTF	SAE-6	<b>NBP</b>		<b>NBP/S</b>	
.25 BSPP	.25 BSPP	<b>NBP/M</b>		<b>NBP/T</b>	

05 REDUCING/RELIEVING

### TYPICAL CARTRIDGES USED WITH BODIES SHOWN ABOVE

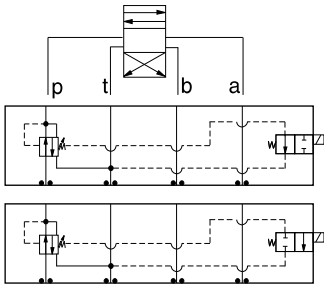
	<i>Pilot Operated Reducing/Relieving Valve with Drain Port</i>		
	<b>PVFA Page 3.14</b>		
	<i>Pilot Operated Reducing/Relieving Valve with Vent Port</i>		
	<b>PVFB Page 3.16</b>		
<b>OTHER VALVES:</b>			



# ISO 05 SANDWICH BODIES



- Aluminum rated to 3000 psi and Ductile Iron rated to 5000 psi.
- See page viii for ordering cartridge/body and seals. Pressure ratings, material specifications on page xiv.

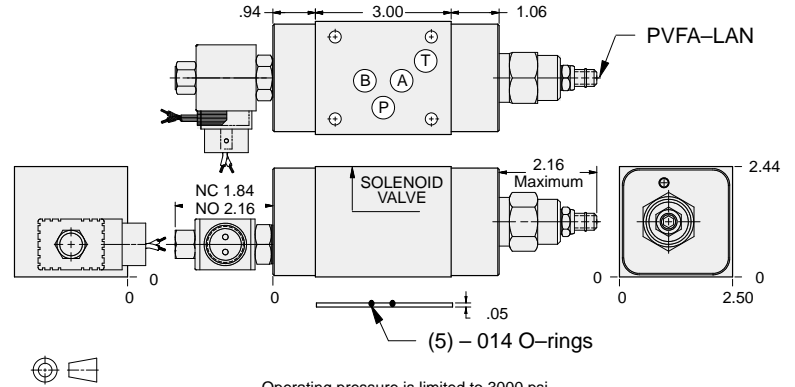


### FUNCTION

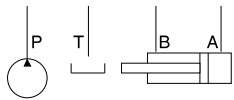
On P Tank to T  
N.O. Solenoid  
on Drain \*

On P Tank to T  
N.C. Solenoid  
on Drain \*

## Reducing/Relieving Valves



Operating pressure is limited to 3000 psi.



Solenoid Type	ALUMINUM		DUCTILE IRON	
	Model Code	List Price	Model Code	List Price
N.O.	YPDG-LAN-*A		YPDG-LAN-*A/S	
N.C.	YPDH-LAN-*A		YPDH-LAN-*A/S	

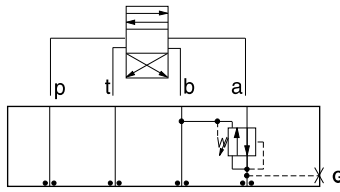
\* Select solenoid connection/voltage option from page 14.16 and add option price to List Price.



# ISO 05 SANDWICH BODIES



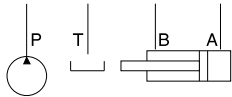
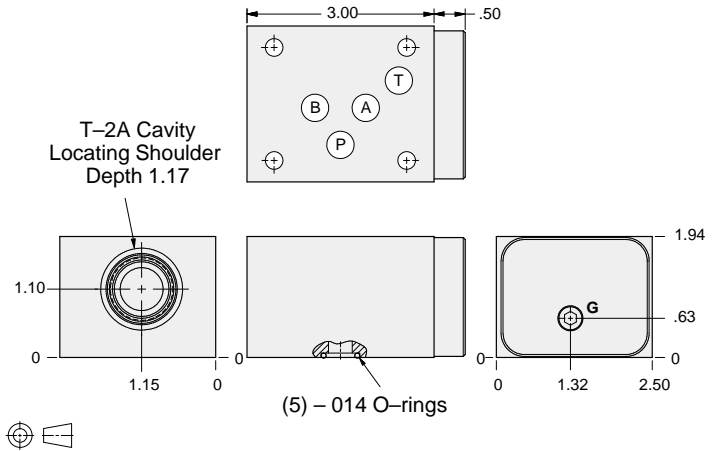
- Aluminum rated to 3000 psi and Ductile Iron rated to 5000 psi.
- See page viii for ordering cartridge/body and seals. Pressure ratings, material specifications on page xiv.



### FUNCTION

On A Tank to B  
Drained to B

### Reducing/Relieving Valves



Gage Port (Plugged)	ALUMINUM		DUCTILE IRON	
	Model Code	List Price	Model Code	List Price
.25 NPTF	<b>BBA</b>		<b>BBA/S</b>	
.25 BSPP	<b>BBA/M</b>		<b>BBA/T</b>	

05 REDUCING/RELIEVING

### TYPICAL CARTRIDGES USED WITH BODIES SHOWN ABOVE

	<i>Pilot Operated Reducing/Relieving Valve</i>		
	<b>PPFB Page 3.10</b>		
<b>OTHER VALVES:</b>			



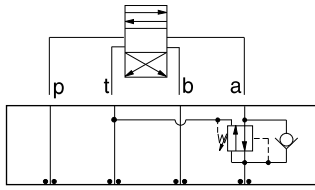
# ISO 05 SANDWICH BODIES



- Aluminum rated to 3000 psi and Ductile Iron rated to 5000 psi.
- See page viii for ordering cartridge/body and seals. Pressure ratings, material specifications on page xiv.

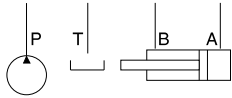
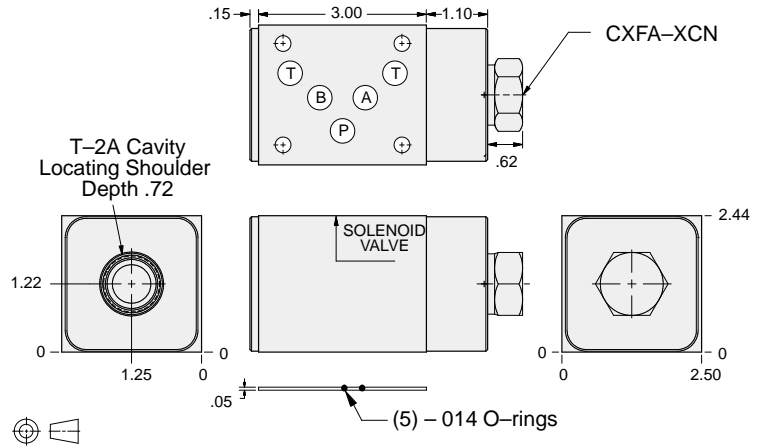
05 REDUCING/RELIEVING

## Reducing/Relieving Valves



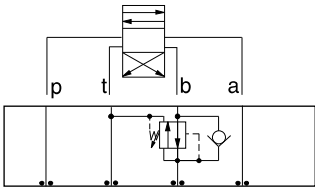
### FUNCTION

On A Tank to T  
Drained to T  
Reverse FF Check



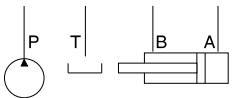
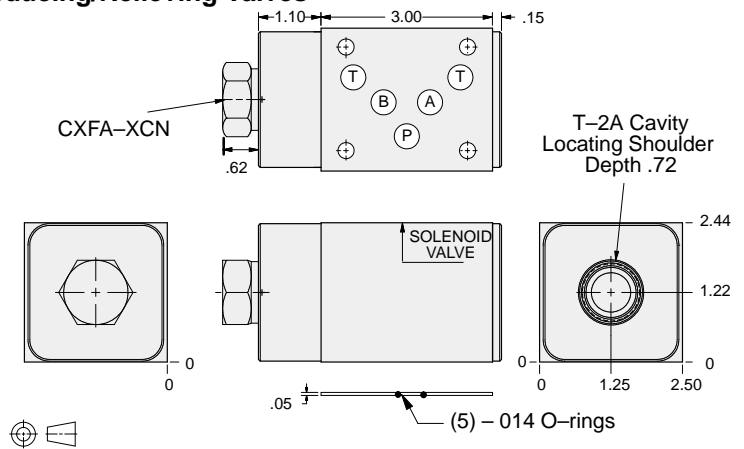
ALUMINUM		DUCTILE IRON	
Model Code	List Price	Model Code	List Price
<b>BB2</b>		<b>BB2/S</b>	

## Reducing/Relieving Valves



### FUNCTION

On B Tank to T  
Drained to T  
Reverse FF Check



ALUMINUM		DUCTILE IRON	
Model Code	List Price	Model Code	List Price
<b>BB3</b>		<b>BB3/S</b>	

### TYPICAL CARTRIDGES USED WITH BODIES SHOWN ABOVE

	Pilot Operated Reducing/Relieving Valve		
	PPFB Page 3.10		
	Air Controlled, Pilot Operated Reducing/Relieving Valve		
	PPFC Page 3.12		
OTHER VALVES:			

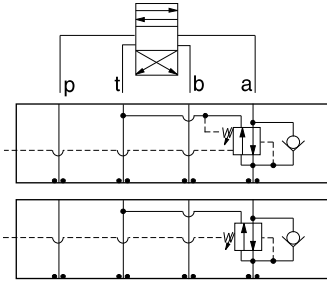


# ISO 05 SANDWICH BODIES



- Aluminum rated to 3000 psi and Ductile Iron rated to 5000 psi.
- See page viii for ordering cartridge/body and seals. Pressure ratings, material specifications on page xiv.

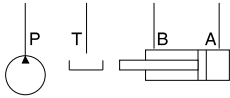
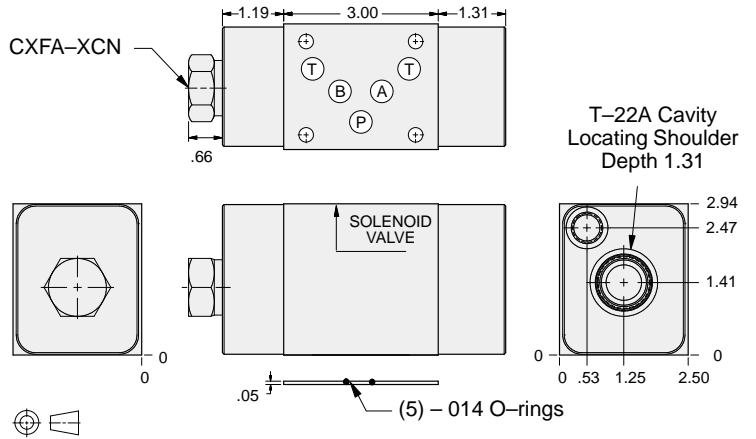
## Reducing/Relieving Valves



### FUNCTION

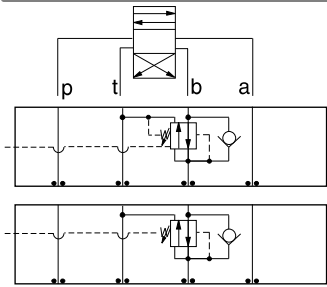
**On A tank to T**  
Vented Externally  
Reverse FF Check

**On A tank to T**  
Drained Externally  
Reverse FF Check



External Port	ALUMINUM		DUCTILE IRON	
	Model Code	List Price	Model Code	List Price
SAE-6	<b>NB2</b>		<b>NB2/S</b>	
.25 BSPP	<b>NB2/M</b>		<b>NB2/T</b>	

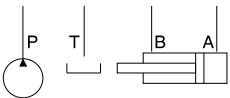
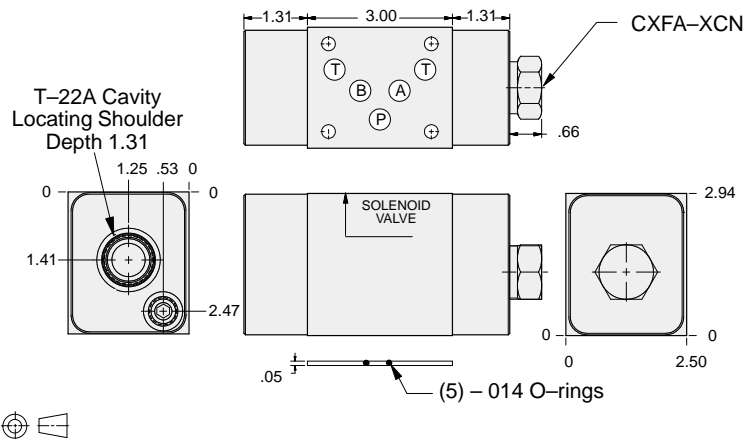
## Reducing/Relieving Valves



### FUNCTION

**On B Tank to T**  
Vented Externally  
Reverse FF Check

**On B Tank to T**  
Drained Externally  
Reverse FF Check



External Port (Plugged)	ALUMINUM		DUCTILE IRON	
	Model Code	List Price	Model Code	List Price
SAE-6	<b>NB3</b>		<b>NB3/S</b>	
.25 BSPP	<b>NB3/M</b>		<b>NB3/T</b>	

### TYPICAL CARTRIDGES USED WITH BODIES SHOWN ABOVE

	Pilot Operated Reducing/Relieving Valve with Drain Port		
	<b>PVFA Page 3.14</b>		
	Pilot Operated Reducing/Relieving Valve with Vent Port		
	<b>PVFB Page 3.16</b>		
<b>OTHER VALVES:</b>			

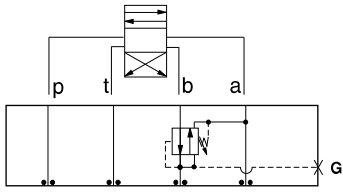
05 REDUCING/RELIEVING



# ISO 05 SANDWICH BODIES



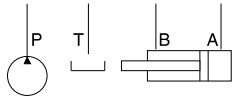
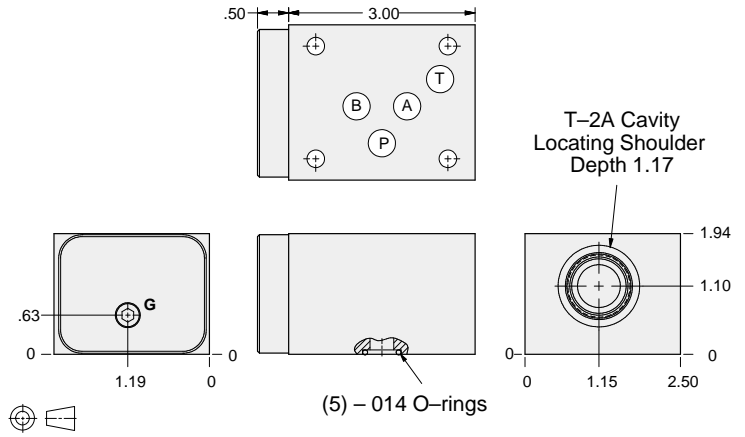
- Aluminum rated to 3000 psi and Ductile Iron rated to 5000 psi.
- See page viii for ordering cartridge/body and seals. Pressure ratings, material specifications on page xiv.



### FUNCTION

On **B** Tank to **A**  
Drained to **A**

### Reducing/Relieving Valves



Gage Port (Plugged)	ALUMINUM		DUCTILE IRON	
	Model Code	List Price	Model Code	List Price
.25 NPTF	<b>BBB</b>		<b>BBB/S</b>	
.25 BSPP	<b>BBB/M</b>		<b>BBB/T</b>	

05 REDUCING/RELIEVING

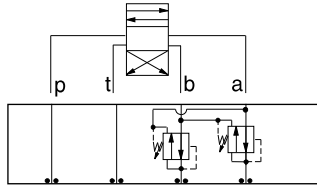
TYPICAL CARTRIDGES USED WITH BODIES SHOWN ABOVE			
	Pilot Operated Reducing/Relieving Valve		
	PPFB Page 3.10		
OTHER VALVES:			



# ISO 05 SANDWICH BODIES



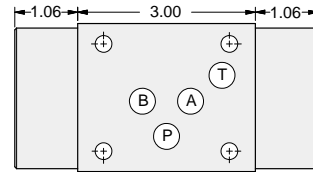
- Aluminum rated to 3000 psi and Ductile Iron rated to 5000 psi.
- See page viii for ordering cartridge/body and seals. Pressure ratings, material specifications on page xiv.



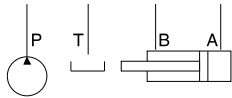
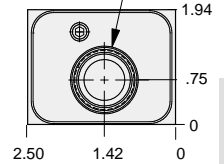
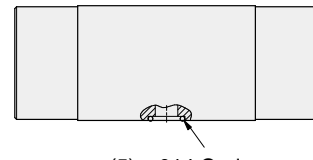
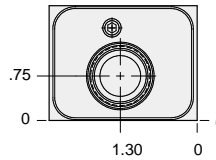
### FUNCTION

On **A** and **B**  
Tanks and Drains to  
Opposite Port

## Reducing/Relieving Valves



T-2A Cavity  
Locating Shoulder  
Depth .69  
2 places.



ALUMINUM		DUCTILE IRON	
Model Code	List Price	Model Code	List Price
<b>BBY</b>		<b>BBY/S</b>	

05 REDUCING/RELIEVING

TYPICAL CARTRIDGES USED WITH BODIES SHOWN ABOVE			
	Pilot Operated Reducing/Relieving Valve		
	PPFB Page 3.10		
OTHER VALVES:			