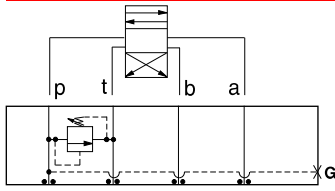




ISO 05 SANDWICH BODIES



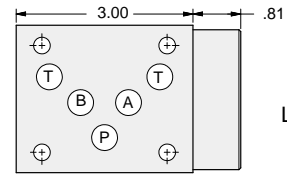
- Aluminum rated to 3000 psi and Ductile Iron rated to 5000 psi.
- See page viii for ordering cartridge/body and seals. Pressure ratings, material specifications on page xiv.



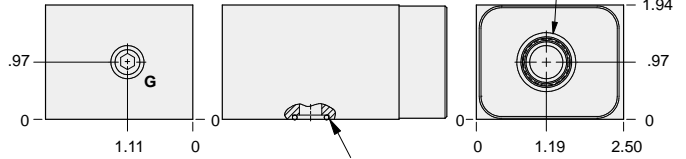
FUNCTION

P to T

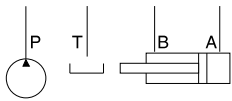
Relief Valves



T-10A Cavity Locating Shoulder Depth .03

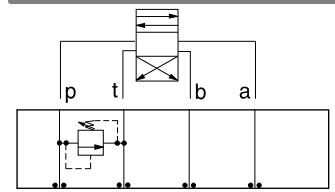


(5) - 014 O-rings



Gage Port (Plugged)	ALUMINUM		DUCTILE IRON	
	Model Code	List Price	Model Code	List Price
.25 NPTF	CBE		CBE/S	
.25 BSPP	CBE/M		CBE/T	

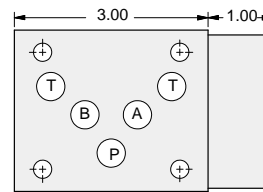
05 RELIEF



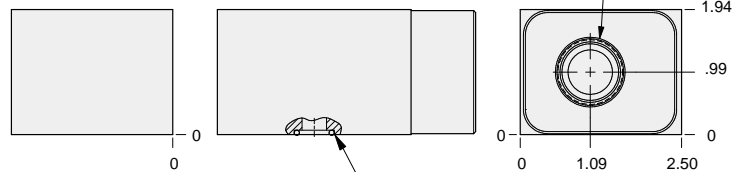
FUNCTION

P to T
(High Capacity)

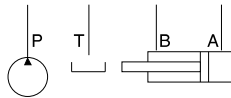
Relief Valves



T-3A Cavity Locating Shoulder Depth .03



(5) - 014 O-rings



ALUMINUM		DUCTILE IRON	
Model Code	List Price	Model Code	List Price
CBP		CBP/S	

TYPICAL CARTRIDGES USED WITH BODIES SHOWN ABOVE

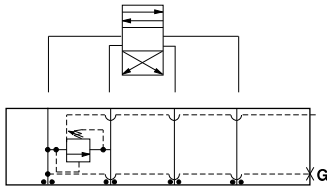
	Pilot Operated Relief Valve		Pilot Operated "Kick-Down" Relief Valve
	RP*C Page 1.06		RQ*B Page 1.12
	Pilot Operated, Rapid Response Relief Valve		Air Controlled, Pilot Operated Relief Valve
	RP*E Page 1.08		RPGD Page 1.14 (use with CBP)
	Direct Acting Relief Valve		
	RD*A Page 1.10		
OTHER VALVES:			



ISO 05 SANDWICH BODIES



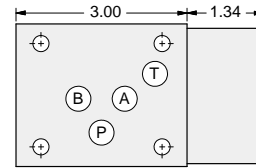
- Aluminum rated to 3000 psi and Ductile Iron rated to 5000 psi.
- See page viii for ordering cartridge/body and seals. Pressure ratings, material specifications on page xiv.



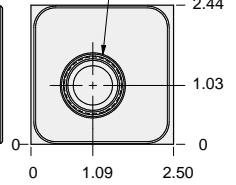
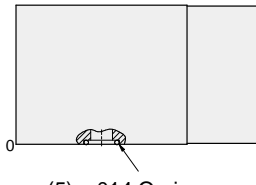
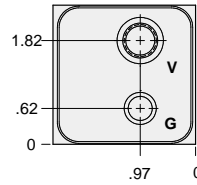
FUNCTION

P to T
Externally Vented

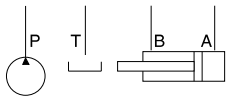
Relief Valves



T-2A Cavity
Locating Shoulder
Depth .72



(5) - 014 O-rings



Gage Port (Plugged)	Vent Port	ALUMINUM		DUCTILE IRON	
		Model Code	List Price	Model Code	List Price
.25 NPTF	SAE-6	BBC		BBC/S	
.25 BSPP	.25 BSPP	BBC/M		BBC/T	

05 RELIEF

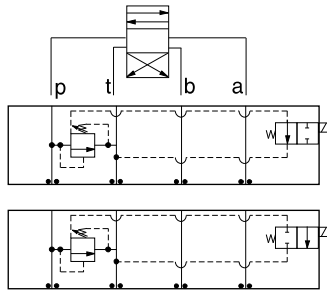
TYPICAL CARTRIDGES USED WITH BODIES SHOWN ABOVE			
	Pilot Operated Vented Relief Valve		
	RVEA Page 1.18		
OTHER VALVES:			



ISO 05 SANDWICH BODIES



- Aluminum rated to 3000 psi and Ductile Iron rated to 5000 psi.
- See page viii for ordering cartridge/body and seals. Pressure ratings, material specifications on page xiv.

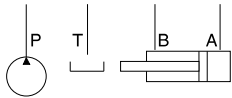
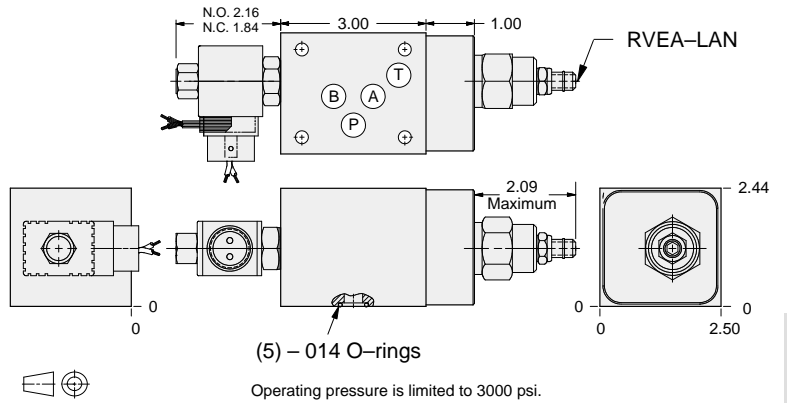


FUNCTION

P to T
N.O. Solenoid
Vented *

P to T
N.C. Solenoid
Vented *

Relief Valves



Solenoid Type	ALUMINUM		DUCTILE IRON	
	Model Code	List Price	Model Code	List Price
N.O.	YREO-LAN-*A		YREO-LAN-*A/S	
N.C.	YREP-LAN-*A		YREP-LAN-*A/S	

* Select solenoid connection/voltage option from page 14.16 and add option price to List Price.

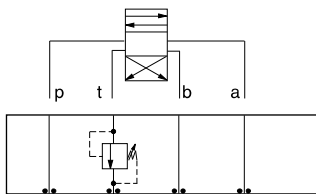


ISO 05 SANDWICH BODIES



- Aluminum rated to 3000 psi and Ductile Iron rated to 5000 psi.
- See page viii for ordering cartridge/body and seals. Pressure ratings, material specifications on page xiv.

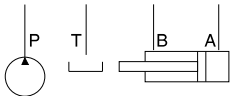
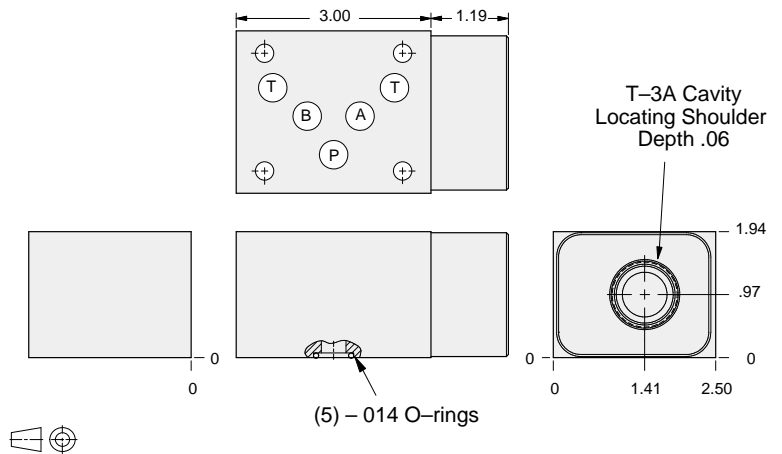
05 RELIEF



FUNCTION

Out of T
(High Capacity)

Relief Valves



ALUMINUM		DUCTILE IRON	
Model Code	List Price	Model Code	List Price
CBT		CBT/S	

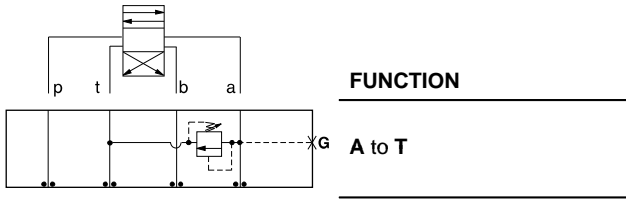
TYPICAL CARTRIDGES USED WITH BODIES SHOWN ABOVE			
	<i>Pilot Operated Relief Valve</i>		<i>Pilot Operated "Kick-Down" Relief Valve</i>
	RPGC Page 1.06		RQGB Page 1.12
	<i>Pilot Operated, Rapid Response Relief Valve</i>		<i>Air Controlled, Pilot Operated Relief Valve</i>
	RPGE Page 1.08		RPGD Page 1.14
	<i>Direct Acting Relief Valve</i>		
	RDFA Page 1.10		
OTHER VALVES:			



ISO 05 SANDWICH BODIES



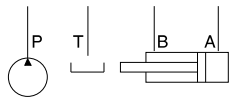
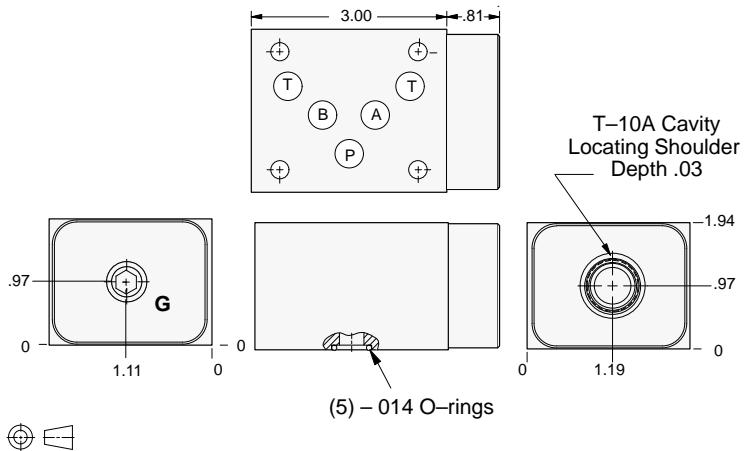
- Aluminum rated to 3000 psi and Ductile Iron rated to 5000 psi.
- See page viii for ordering cartridge/body and seals. Pressure ratings, material specifications on page xiv.



FUNCTION

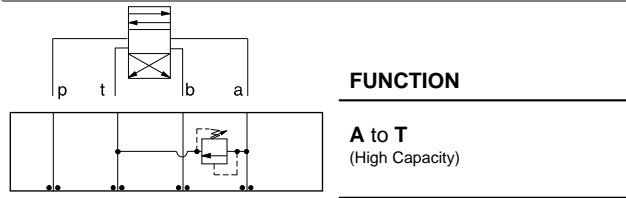
A to T

Relief Valves



Gage Port (Plugged)	ALUMINUM		DUCTILE IRON	
	Model Code	List Price	Model Code	List Price
.25 NPTF	CBF		CBF/S	
.25 BSPP	CBF/M		CBF/T	

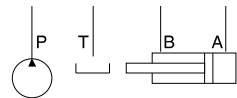
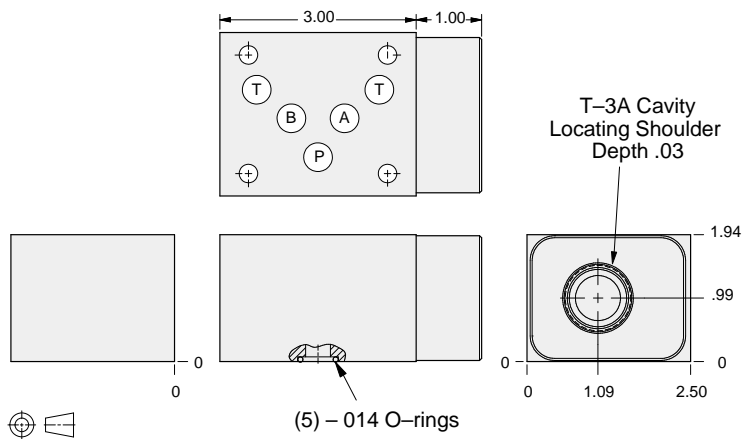
05 RELIEF



FUNCTION

A to T
(High Capacity)

Relief Valves



ALUMINUM		DUCTILE IRON	
Model Code	List Price	Model Code	List Price
CBA		CBA/S	

TYPICAL CARTRIDGES USED WITH BODIES SHOWN ABOVE

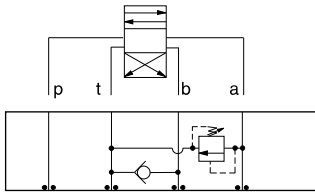
	Pilot Operated Relief Valve RP*C Page 1.06		Pilot Operated "Kick-Down" Relief Valve RQ*B Page 1.12
	Pilot Operated, Rapid Response Relief Valve RP*E Page 1.08		Air Controlled, Pilot Operated Relief Valve RPGD Page 1.14 (use with CBA)
	Direct Acting Relief Valve RD*A Page 1.10		
OTHER VALVES:			



ISO 05 SANDWICH BODIES



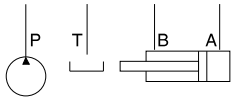
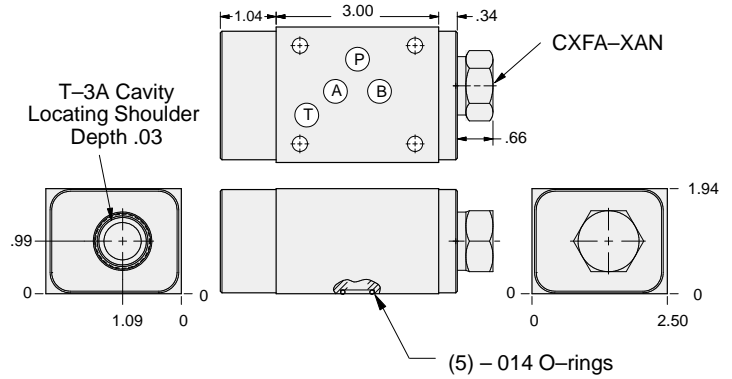
- Aluminum rated to 3000 psi and Ductile Iron rated to 5000 psi.
- See page viii for ordering cartridge/body and seals. Pressure ratings, material specifications on page xiv.



FUNCTION

A to T
FF Check T to B

Relief Valves



ALUMINUM		DUCTILE IRON	
<i>Model Code</i>	<i>List Price</i>	<i>Model Code</i>	<i>List Price</i>
CB2		CB2/S	

05 RELIEF

TYPICAL CARTRIDGES USED WITH BODIES SHOWN ABOVE

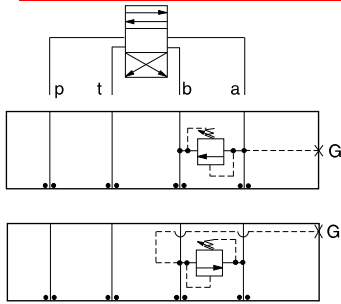
	<i>Pilot Operated Relief Valve</i> RPGC Page 1.06		<i>Pilot Operated "Kick-Down" Relief Valve</i> RQGB Page 1.12
	<i>Pilot Operated, Rapid Response Relief Valve</i> RPGE Page 1.08		<i>Air Controlled, Pilot Operated Relief Valve</i> RPGD Page 1.14
	<i>Direct Acting Relief Valve</i> RDFA Page 1.10		
OTHER VALVES:			



ISO 05 SANDWICH BODIES



- Aluminum rated to 3000 psi and Ductile Iron rated to 5000 psi.
- See page viii for ordering cartridge/body and seals. Pressure ratings, material specifications on page xiv.

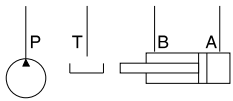
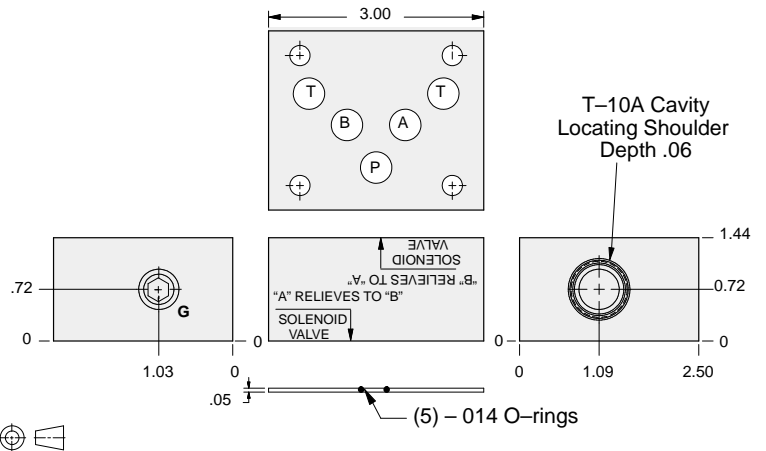


FUNCTION

A to B

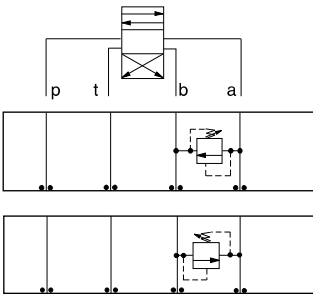
B to A

Relief Valves



Gage Port (Plugged)	ALUMINUM		DUCTILE IRON	
	Model Code	List Price	Model Code	List Price
.25 NPTF	CBH		CBH/S	
.25 BSPP	CBH/M		CBH/T	

05 RELIEF

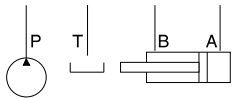
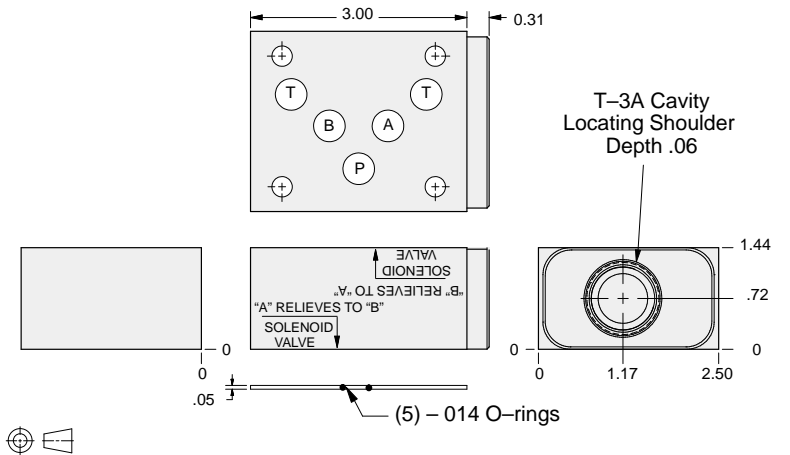


FUNCTION

A to B
(High Capacity)

B to A
(High Capacity)

Relief Valves



ALUMINUM		DUCTILE IRON	
Model Code	List Price	Model Code	List Price
CBC		CBC/S	

TYPICAL CARTRIDGES USED WITH BODIES SHOWN ABOVE

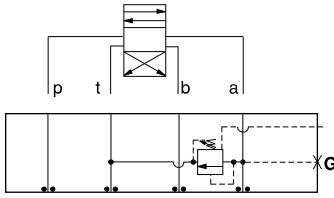
	Pilot Operated Relief Valve		Pilot Operated "Kick-Down" Relief Valve
	RP*C Page 1.06		RQ*B Page 1.12
	Pilot Operated, Rapid Response Relief Valve		Air Controlled, Pilot Operated Relief Valve
	RP*E Page 1.08		RPGD Page 1.14 (use with CBC)
	Direct Acting Relief Valve		
	RD*A Page 1.10		



ISO 05 SANDWICH BODIES



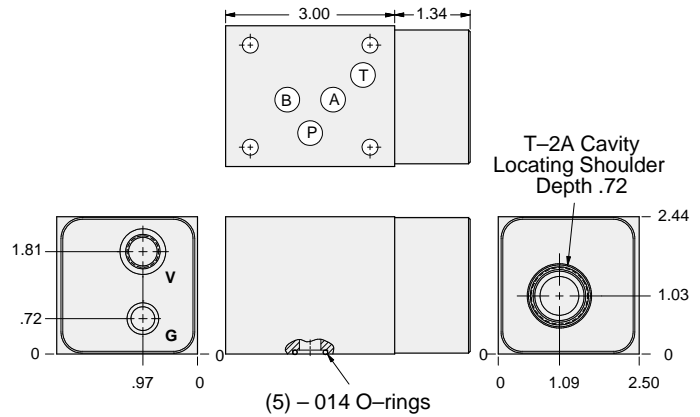
- Aluminum rated to 3000 psi and Ductile Iron rated to 5000 psi.
- See page viii for ordering cartridge/body and seals. Pressure ratings, material specifications on page xiv.



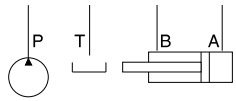
FUNCTION

A to T
Externally Vented

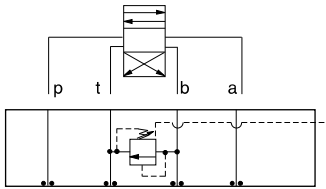
Relief Valves



Gage Port (Plugged)	Vent Port	ALUMINUM		DUCTILE IRON	
		Model Code	List Price	Model Code	List Price
.25 NPTF	SAE-6	BBD		BBD/S	
.25 BSPP	.25 BSPP	BBD/M		BBD/T	

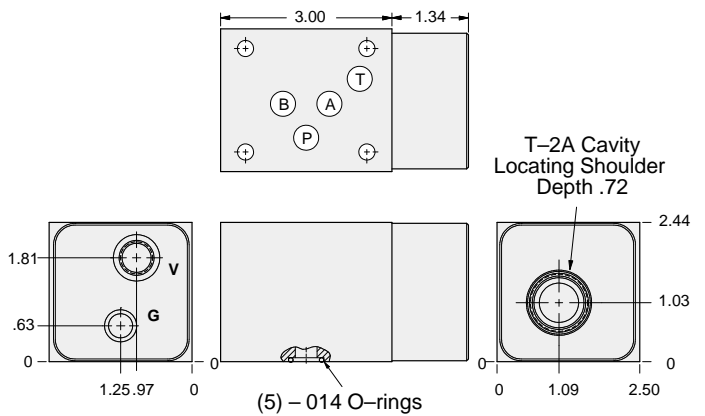


Relief Valves

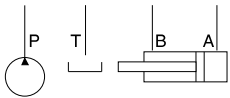


FUNCTION

B to T
Externally Vented



Gage Port (Plugged)	Vent Port	ALUMINUM		DUCTILE IRON	
		Model Code	List Price	Part Number	List Price
.25 NPTF	SAE-6	BBE		BBE/S	
.25 BSPP	.25 BSPP	BBE/M		BBE/T	



TYPICAL CARTRIDGES USED WITH BODIES SHOWN ABOVE

	Pilot Operated Vented Relief Valve		
	RVEA Page 1.18		
OTHER VALVES:			

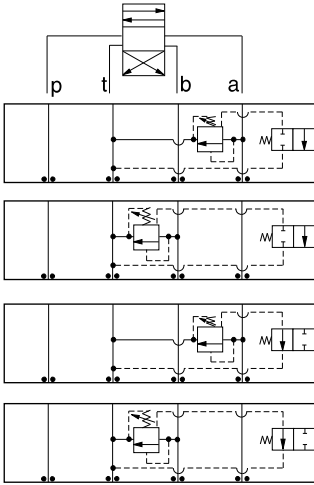


ISO 05 SANDWICH BODIES



- Aluminum rated to 3000 psi and Ductile Iron rated to 5000 psi.
- See page viii for ordering cartridge/body and seals. Pressure ratings, material specifications on page xiv.

Relief Valves



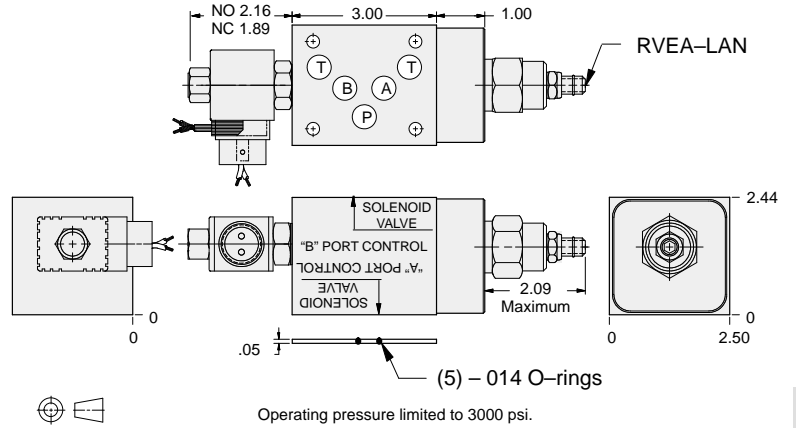
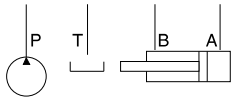
FUNCTION

A to T
N.C. Solenoid
Vented

B to T
N.C. Solenoid Vented

A to T
N.O. Solenoid
Vented

B to T
N.O. Solenoid Vented



Solenoid Type	ALUMINUM		DUCTILE IRON	
	Model Code	List Price	Model Code	List Price
N.C.	YRET-LAN-*A		YRET-LAN-*A/S	
N.O.	YREU-LAN-*A		YREU-LAN-*A/S	

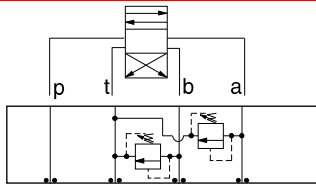
* Select solenoid connection/voltage option from page 14.16 and add option price to List Price.



ISO 05 SANDWICH BODIES



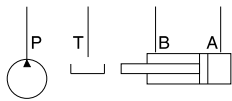
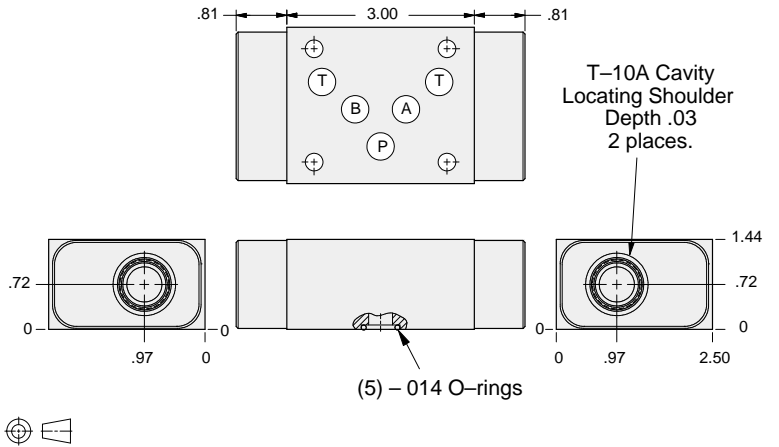
- Aluminum rated to 3000 psi and Ductile Iron rated to 5000 psi.
- See page viii for ordering cartridge/body and seals. Pressure ratings, material specifications on page xiv.



FUNCTION

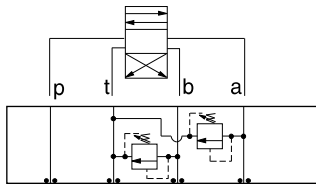
A and B to T

Relief Valves



ALUMINUM		DUCTILE IRON	
Model Code	List Price	Model Code	List Price
CBD		CBD/S	

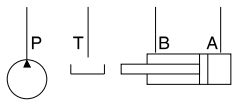
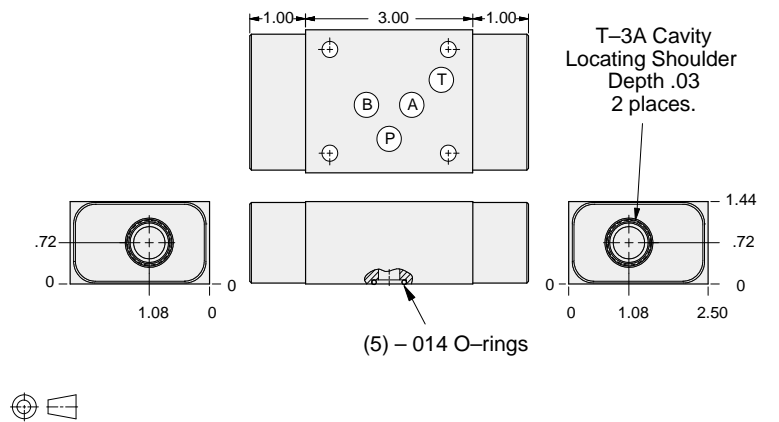
05 RELIEF



FUNCTION

A and B to T
(High Capacity)

Relief Valves



ALUMINUM		DUCTILE IRON	
Model Code	List Price	Model Code	List Price
CBX		CBX/S	

TYPICAL CARTRIDGES USED WITH BODIES SHOWN ABOVE

	Pilot Operated Relief Valve RP*C Page 1.06		Pilot Operated "Kick-Down" Relief Valve RQ*B Page 1.12
	Pilot Operated, Rapid Response Relief Valve RP*E Page 1.08		Air Controlled, Pilot Operated Relief Valve RPGD Page 1.14 (use with CBX)
	Direct Acting Relief Valve RD*A Page 1.10		

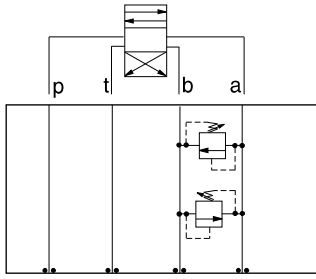


ISO 05 SANDWICH BODIES



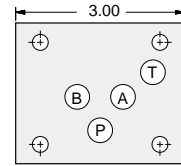
- Aluminum rated to 3000 psi and Ductile Iron rated to 5000 psi.
- See page viii for ordering cartridge/body and seals. Pressure ratings, material specifications on page xiv.

Relief Valves

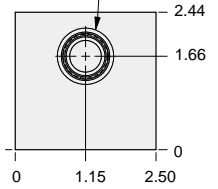
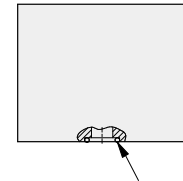
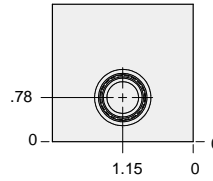


FUNCTION

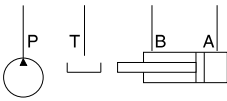
**A to B and
B to A**
(Cross-Port)



T-10A Cavity
Locating Shoulder
Depth .06
2 places.

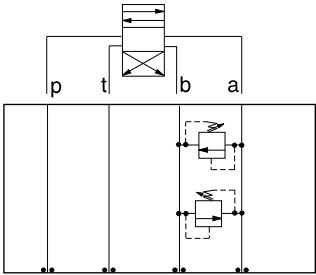


(5) - O14 O-rings



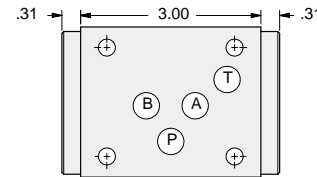
ALUMINUM		DUCTILE IRON	
Model Code	List Price	Model Code	List Price
CBI		CBIS	

Relief Valves

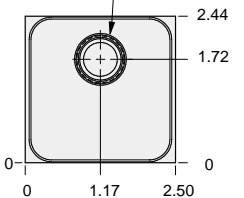
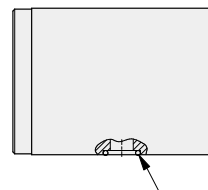
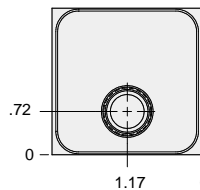


FUNCTION

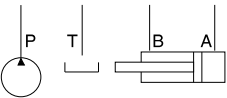
**A to B and
B to A**
(High Capacity)
(Cross-Port)



T-3A Cavity
Locating Shoulder
Depth .06
2 places.



(5) - O14 O-rings



ALUMINUM		DUCTILE IRON	
Model Code	List Price	Model Code	List Price
CBY		CBYS	

TYPICAL CARTRIDGES USED WITH BODIES SHOWN ABOVE

	Pilot Operated Relief Valve		Pilot Operated "Kick-Down" Relief Valve
	RP*C Page 1.06		RQ*B Page 1.12
	Pilot Operated, Rapid Response Relief Valve		Air Controlled, Pilot Operated Relief Valve
	RP*E Page 1.08		RPGD Page 1.14 (use with CBY)
	Direct Acting Relief Valve		
	RD*A Page 1.10		

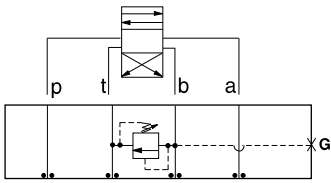
05 RELIEF



ISO 05 SANDWICH BODIES



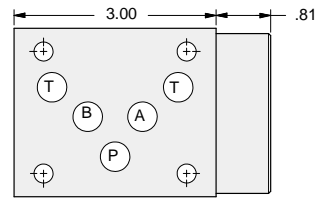
- Aluminum rated to 3000 psi and Ductile Iron rated to 5000 psi.
- See page viii for ordering cartridge/body and seals. Pressure ratings, material specifications on page xiv.



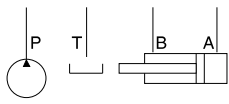
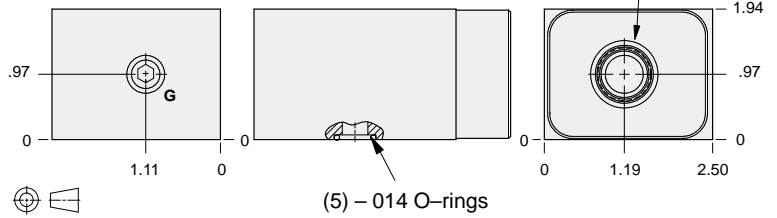
FUNCTION

B to T

Relief Valves

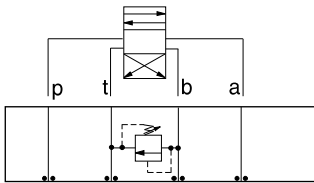


T-10A Cavity
Locating Shoulder
Depth .03



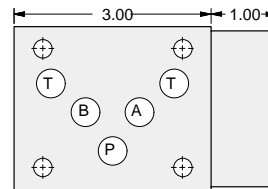
Gage Port (Plugged)	ALUMINUM		DUCTILE IRON	
	Model Code	List Price	Model Code	List Price
.25 NPTF	CBG		CBG/S	
.25 BSPP	CBG/M		CBG/T	

Relief Valves

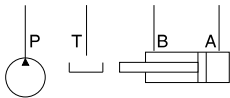
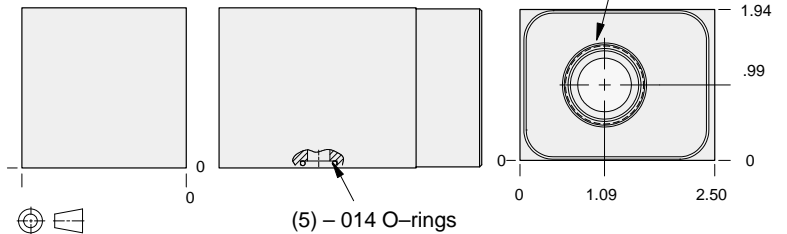


FUNCTION

B to T
(High Capacity)



T-3A Cavity
Locating Shoulder
Depth .03



ALUMINUM		DUCTILE IRON	
Model Code	List Price	Model Code	List Price
CBB		CBB/S	

TYPICAL CARTRIDGES USED WITH BODIES SHOWN ABOVE

	Pilot Operated Relief Valve		Pilot Operated "Kick-Down" Relief Valve
	RP*C Page 1.06		RQ*B Page 1.12
	Pilot Operated, Rapid Response Relief Valve		Air Controlled, Pilot Operated Relief Valve
	RP*E Page 1.08		RP*D Page 1.14 (use with CBB)
	Direct Acting Relief Valve		
	RD*A Page 1.10		