

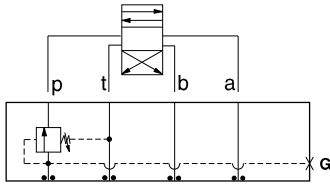


# ISO 05 SANDWICH BODIES



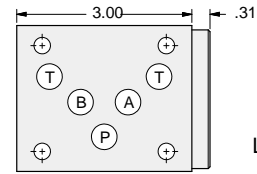
- Aluminum rated to 3000 psi and Ductile Iron rated to 5000 psi.
- See page viii for ordering cartridge/body and seals. Pressure ratings, material specifications on page xiv.

## Sequence Valves

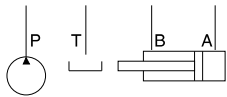
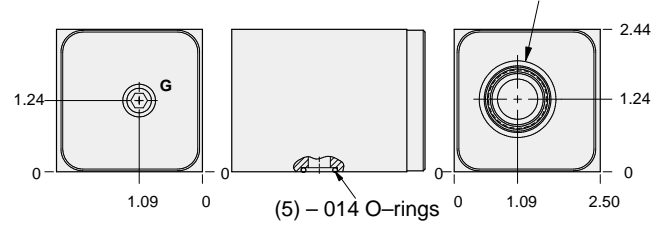


### FUNCTION

In to P



T-2A Cavity  
Locating Shoulder  
Depth .75



| Gage Port<br>(Plugged) | ALUMINUM     |            | DUCTILE IRON |            |
|------------------------|--------------|------------|--------------|------------|
|                        | Model Code   | List Price | Model Code   | List Price |
| .25 NPTF               | <b>BBW</b>   |            | <b>BBW/S</b> |            |
| .25 BSPP               | <b>BBW/M</b> |            | <b>BBW/T</b> |            |

05 SEQUENCE

### TYPICAL CARTRIDGES USED WITH BODIES SHOWN ABOVE

|                      |  |  |  |
|----------------------|--|--|--|
|                      | <i>Pilot Operated Sequence Valve</i>                 |  |  |
|                      | <b>RSFC Page 2.06</b>                                |  |  |
|                      | <i>Pilot Operated "Kick-Down" Sequence Valve</i>     |  |  |
|                      | <b>SQFB Page 2.08</b>                                |  |  |
|                      | <i>Air Controlled, Pilot Operated Sequence Valve</i> |  |  |
|                      | <b>RSFE Page 2.10</b>                                |  |  |
| <b>OTHER VALVES:</b> | <b>SCEA</b>  |  |  |

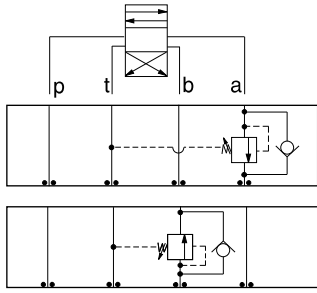


# ISO 05 SANDWICH BODIES



- Aluminum rated to 3000 psi and Ductile Iron rated to 5000 psi.
- See page viii for ordering cartridge/body and seals. Pressure ratings, material specifications on page xiv.

05 SEQUENCE

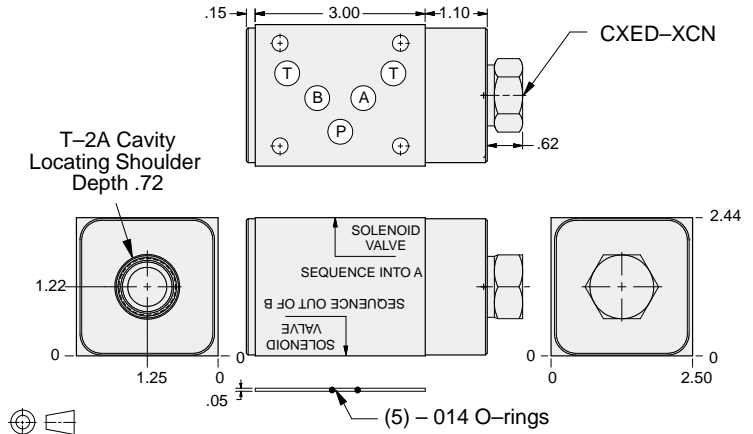


### FUNCTION

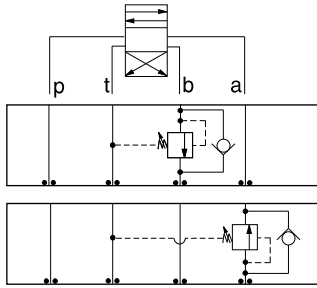
**In to A**  
Reverse FF Check

**Out of B**  
Reverse FF Check

### Sequence Valves



| ALUMINUM   |            | DUCTILE IRON |            |
|------------|------------|--------------|------------|
| Model Code | List Price | Model Code   | List Price |
| <b>BB4</b> |            | <b>BB4/S</b> |            |

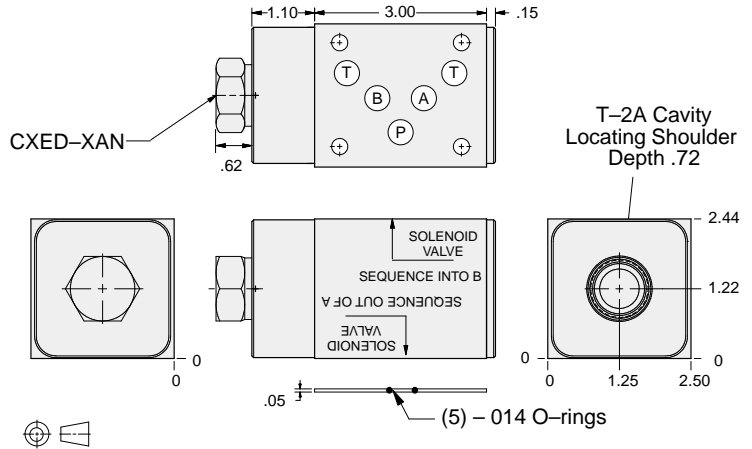


### FUNCTION

**In to B**  
Reverse FF Check

**Out of A**  
Reverse FF Check

### Sequence Valves



| ALUMINUM   |            | DUCTILE IRON |            |
|------------|------------|--------------|------------|
| Model Code | List Price | Model Code   | List Price |
| <b>BB5</b> |            | <b>BB5/S</b> |            |

### TYPICAL CARTRIDGES USED WITH BODIES SHOWN ABOVE

|                      |  |  |  |
|----------------------|--|--|--|
|                      | <i>Pilot Operated Sequence Valve</i>                 |  |  |
|                      | <b>RSFC Page 2.06</b>                                |  |  |
|                      | <i>Pilot Operated "Kick-Down" Sequence Valve</i>     |  |  |
|                      | <b>SQFB Page 2.08</b>                                |  |  |
|                      | <i>Air Controlled, Pilot Operated Sequence Valve</i> |  |  |
|                      | <b>RSFE Page 2.10</b>                                |  |  |
| <b>OTHER VALVES:</b> |  |  |  |