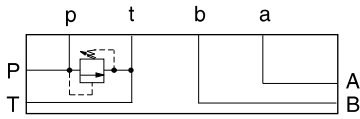




ISO 05 SANDWICH BODIES



- Aluminum rated to 3000 psi and Ductile Iron rated to 5000 psi.
- See page viii for ordering cartridge/body and seals. Pressure ratings, material specifications on page xiv.

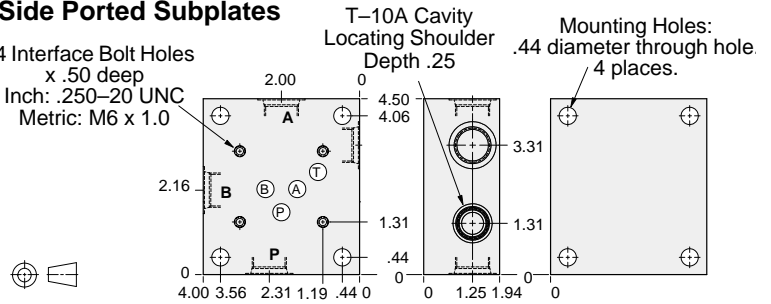


FUNCTION

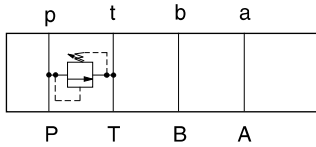
Relief P to T

Side Ported Subplates

4 Interface Bolt Holes
x .50 deep
Inch: .250-20 UNC
Metric: M6 x 1.0



Bolt Hole Interface	Ports A,B,P,T	ALUMINUM		DUCTILE IRON	
		Model Code	List Price	Model Code	List Price
Inch	.50 NPTF	FSC		FSC/S	
Inch	SAE-10	FSK		FSK/S	
Metric	.50 BSPP	FSV		FSV/S	

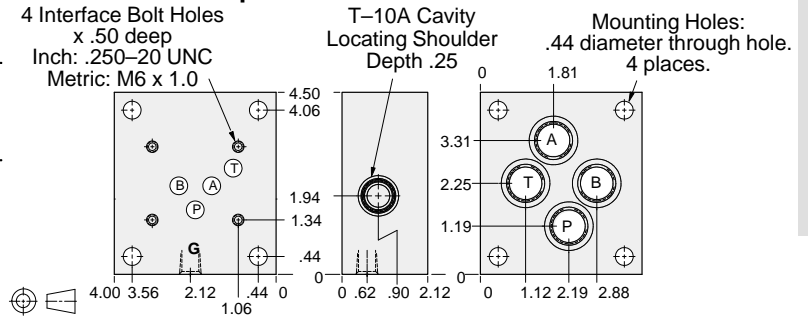


FUNCTION

Relief P to T

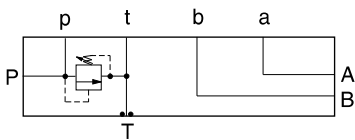
Rear Ported Subplates

4 Interface Bolt Holes
x .50 deep
Inch: .250-20 UNC
Metric: M6 x 1.0



Bolt Hole Interface	Gauge Port	Ports A,B,P,T	ALUMINUM		DUCTILE IRON	
			Model Code	List Price	Model Code	List Price
Inch	.25 NPTF	.50 NPTF	FRC		FRC/S	
Inch	.25 NPTF	SAE-10	FRK		FRK/S	
Metric	.25 BSPP	.50 BSPP	FRV		FRV/S	

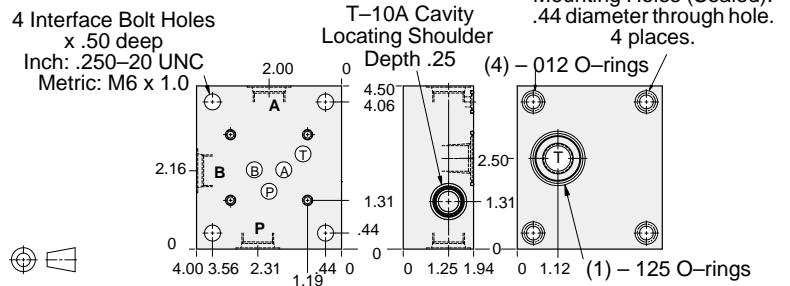
Side Ported Subplates with Gasket Mount Tank Port



FUNCTION

Relief P to T

4 Interface Bolt Holes
x .50 deep
Inch: .250-20 UNC
Metric: M6 x 1.0



Bolt Hole Interface	Ports A,B,P	ALUMINUM		DUCTILE IRON	
		Model Code	List Price	Model Code	List Price
Inch	.50 NPTF	FTC		FTC/S	
Inch	SAE-10	FTK		FTK/S	
Metric	.50 BSPP	FTV		FTV/S	

TYPICAL CARTRIDGES USED WITH BODIES SHOWN ABOVE

	Pilot Operated Relief Valve RPEC Page 1.06		Pilot Operated "Kick-Down" Relief Valve RQEB Page 1.12
	Pilot Operated, Rapid Response Relief Valve RPEE Page 1.08		Direct Acting Relief Valve RDDA Page 1.10

05 SUBPLATE



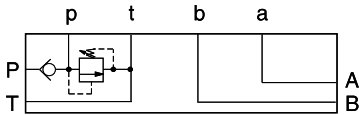
ISO 05 SANDWICH BODIES



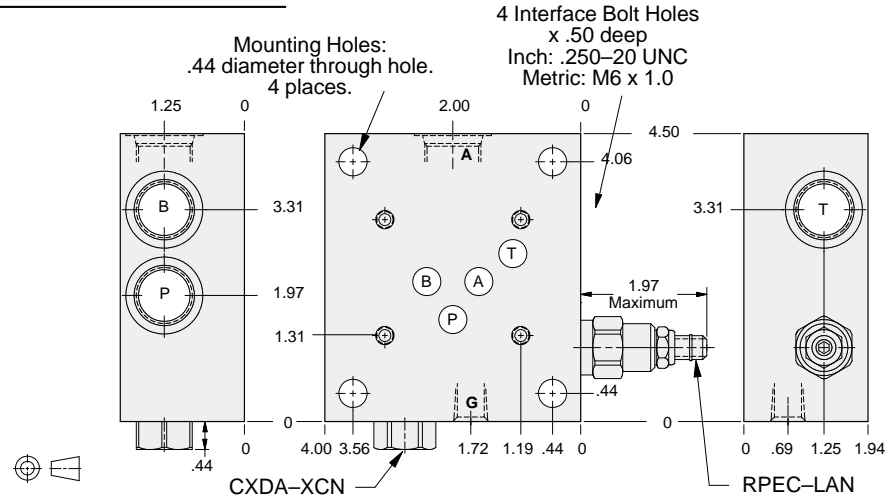
- Aluminum rated to 3000 psi and Ductile Iron rated to 5000 psi.
- See page viii for ordering cartridge/body and seals. Pressure ratings, material specifications on page xiv.

Side Ported Subplates

FUNCTION



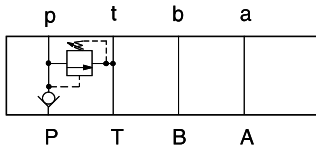
Relief P to T
Check on P



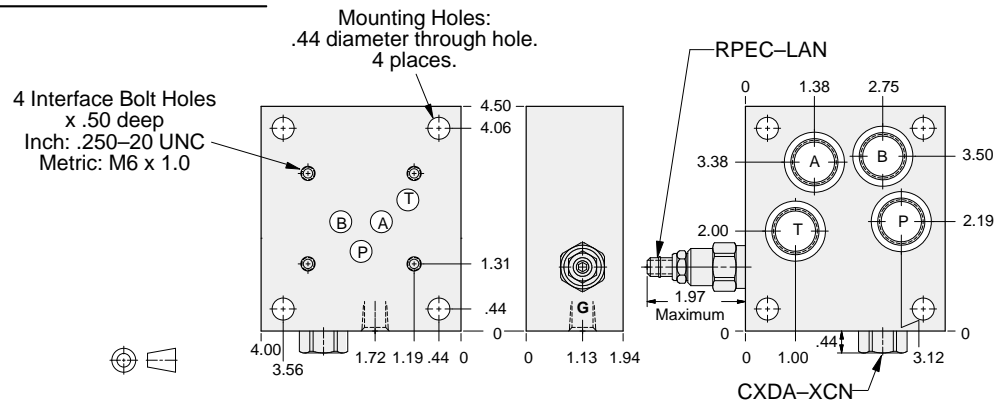
Bolt Hole Interface	Gage Port	Ports A,B,P,T	ALUMINUM		DUCTILE IRON	
			Model Code	List Price	Model Code	List Price
Inch	.25 NPTF	.50 NPTF	YREJ-LAN-BC		YREJ-LAN-BC/S	
Inch	.25 NPTF	SAE-10	YREJ-LAN-BK		YREJ-LAN-BK/S	
Metric	.25 BSPP	.50 BSPP	YREJ-LAN-BV		YREJ-LAN-BV/S	

Rear Ported Subplates

FUNCTION



Relief P to T
Check on P



Bolt Hole Interface	Gage Port	Ports A,B,P,T	ALUMINUM		DUCTILE IRON	
			Model Code	List Price	Model Code	List Price
Inch	.25 NPTF	.50 NPTF	YREQ-LAN-BC		YREQ-LAN-BC/S	
Inch	.25 NPTF	SAE-10	YREQ-LAN-BK		YREQ-LAN-BK/S	
Metric	.25 BSPP	.50 BSPP	YREQ-LAN-BV		YREQ-LAN-BV/S	

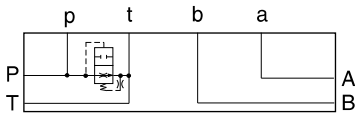


ISO 05 SANDWICH BODIES



- Aluminum rated to 3000 psi and Ductile Iron rated to 5000 psi.
- See page viii for ordering cartridge/body and seals. Pressure ratings, material specifications on page xiv.

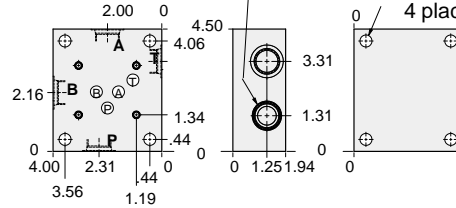
Side Ported Subplates



FUNCTION

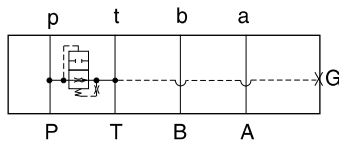
Air-Bleed and Start-Up

T-3A Cavity
Locating Shoulder
Depth .03
Mounting Holes:
.44 diameter through hole.
4 places.



Bolt Hole Interface	Ports A,B,P,T	ALUMINIUM		SG IRON	
		Model Code	List Price	Model Code	List Price
Inch	.50 NPTF	CSC		CSC/S	
Inch	SAE-10	CSK		CSK/S	
Metric	.50 BSPP	CSV		CSV/S	

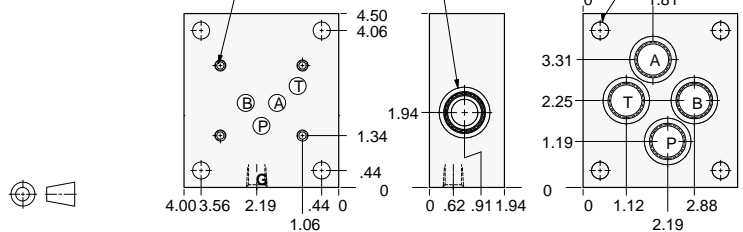
Rear Ported Subplates



FUNCTION

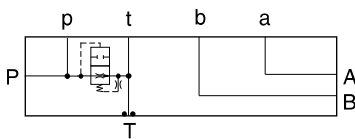
Air-Bleed and Start-Up

4 Interface Bolt Holes
x .50 deep
Inch: .250-20 UNC
Metric: M6 x 1.0
T-3A Cavity
Locating Shoulder
Depth .03
Mounting Holes:
.44 diameter through hole.
4 places.



Bolt Hole Interface	Gage Port	Ports A,B,P,T	ALUMINIUM		SG IRON	
			Model Code	List Price	Model Code	List Price
Inch	.25 NPTF	.50 NPTF	CRC		CRC/S	
Inch	.25 NPTF	SAE-10	CRK		CRK/S	
Metric	.25 BSPP	.50 BSPP	CRV		CRV/S	

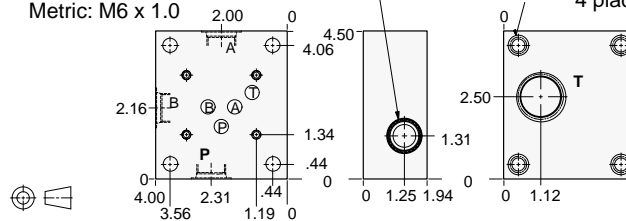
Side Ported Subplates with Gasket Mount Tank Port



FUNCTION

Air-Bleed and Start-Up

4 Interface Bolt Holes
x .50 deep
Inch: .250-20 UNC
Metric: M6 x 1.0
T-3A Cavity
Locating Shoulder
Depth .03
Mounting Holes:
.44 diameter through hole.
4 places.



Bolt Hole Interface	Ports P, A, B	Port T	ALUMINIUM		SG IRON	
			Model Code	List Price	Model Code	List Price
Inch	.50 NPTF	.50 NPTF	CTC		CTC/S	
Inch	SAE-10	.50 NPTF	CTK		CTK/S	
Metric	.50 BSPP	.50 BSPP	CTV		CTV/S	

TYPICAL CARTRIDGES USED WITH BODIES SHOWN ABOVE

	Air Bleed and Start-up Valve		
	NQEB Page 10.16		

05 SUBPLATE



ISO 05 SANDWICH BODIES



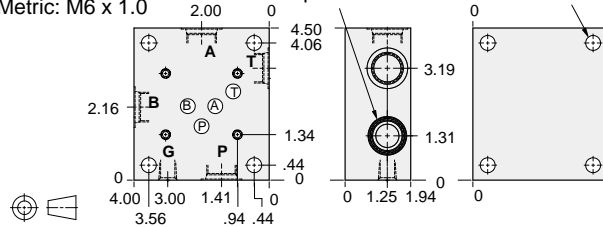
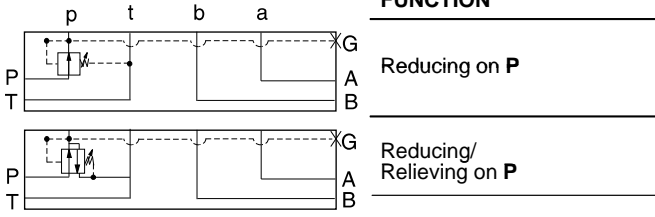
- Aluminum rated to 3000 psi and Ductile Iron rated to 5000 psi.
- See page viii for ordering cartridge/body and seals. Pressure ratings, material specifications on page xiv.

Side Ported Subplates

4 Interface Bolt Holes
x .50 deep
Inch: .250-20 UNC
Metric: M6 x 1.0

T-2A Cavity
Locating Shoulder
Depth .72

Mounting Holes:
.44 diameter through hole.
4 places.



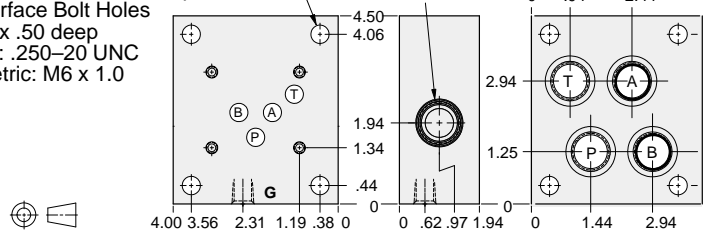
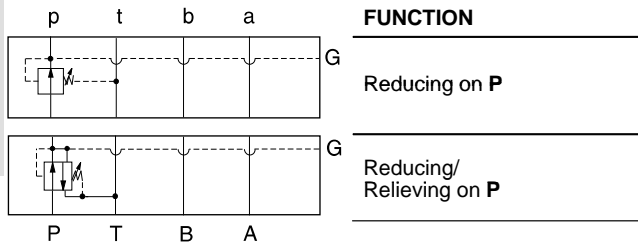
Gage Port (Plugged)	Gage Port	Ports A,B,P,T	ALUMINUM		DUCTILE IRON	
			Model Code	List Price	Model Code	List Price
Inch	.25 NPTF	.50 NPTF	BSC		BSC/S	
Inch	.25 NPTF	SAE-10	BSK		BSK/S	
Metric	.25 BSPP	.50 BSPP	BSV		BSV/S	

Rear Ported Subplates

Mounting Holes:
.44 diameter through hole.
4 places.

T-2A Cavity
Locating Shoulder
Depth .72

4 Interface Bolt Holes
x .50 deep
Inch: .250-20 UNC
Metric: M6 x 1.0



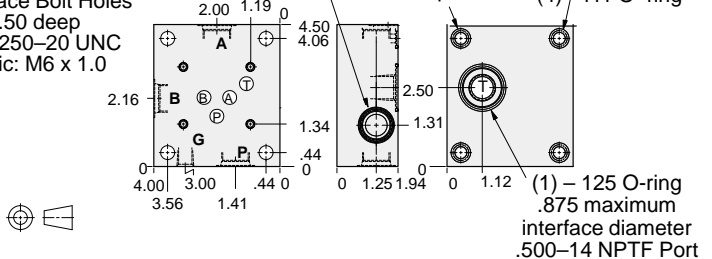
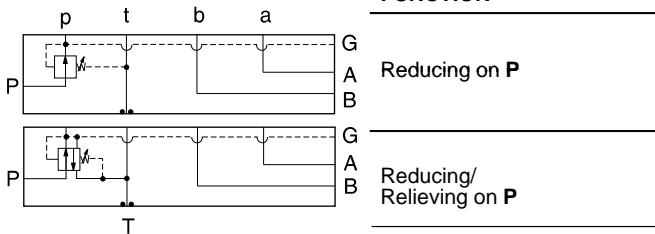
Gage Port (Plugged)	Gage Port	Ports A,B,P,T	ALUMINUM		DUCTILE IRON	
			Model Code	List Price	Model Code	List Price
Inch	.25 NPTF	.50 NPTF	BRC		BRC/S	
Inch	.25 NPTF	SAE-10	BRK		BRK/S	
Metric	.25 BSPP	.50 BSPP	BRV		BRV/S	

Side Ported Subplates with Gasket Mount Tank Port

T-2A Cavity
Locating Shoulder
Depth .72

Mounting Holes (Sealed):
.44 diameter through hole.
4 places. (4) -111 O-ring

4 Interface Bolt Holes
x .50 deep
Inch: .250-20 UNC
Metric: M6 x 1.0



Gage Port (Plugged)	Gage Port	Ports A,B,P	ALUMINUM		DUCTILE IRON	
			Model Code	List Price	Model Code	List Price
Inch	.25 NPTF	.50 NPTF	BTC		BTC/S	
Inch	.25 NPTF	SAE-10	BTK		BTK/S	
Metric	.25 BSPP	.50 BSPP	BTV		BTV/S	

TYPICAL CARTRIDGES USED WITH BODIES SHOWN ABOVE

	Pilot Operated Reducing Valve PBFB Page 3.06		Pilot Operated Reducing/Relieving Valve PPFB Page 3.10
--	---	--	---



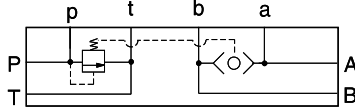
ISO 05 SANDWICH BODIES



- Aluminum rated to 3000 psi and Ductile Iron rated to 5000 psi.
- See page viii for ordering cartridge/body and seals. Pressure ratings, material specifications on page xiv.

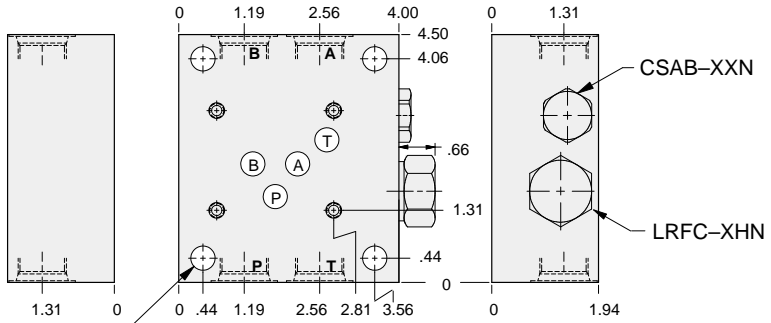
Side Ported Subplates

FUNCTION



Bypass
Compensator
for Proportional
Valves

4 Interface Bolt Holes
x .50 deep
Inch: .250-20 UNC
Metric: M6 x 1.0



Mounting Holes:
.44 diameter through hole.
4 places.

Bolt Hole Interface	Ports A,B,P,T	ALUMINUM		DUCTILE IRON	
		Model Code	List Price	Model Code	List Price
Inch	.50 NPTF	YFES-XHN-BC		YFES-XHN-BC/S	
Inch	SAE-10	YFES-XHN-BK		YFES-XHN-BK/S	
Metric	.50 BSPP	YFES-XHN-BV		YFES-XHN-BV/S	

05 SUBPLATE



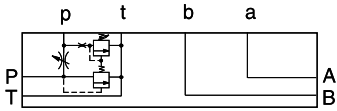
ISO 05 SANDWICH BODIES



- Aluminum rated to 3000 psi and Ductile Iron rated to 5000 psi.
- See page viii for ordering cartridge/body and seals. Pressure ratings, material specifications on page xiv.

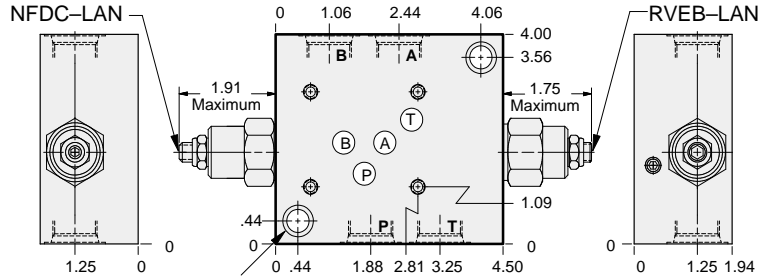
Side Ported Subplates

FUNCTION



Relief P to T
and Bypass
Flow Regulator

4 Interface Bolt Holes
x .50 deep
Inch: .250-20 UNC
Metric: M6 x 1.0



Mounting Holes:
.47 diameter through hole.
Counterbore .69 diameter x .44 in. deep.
2 places.

Bolt Hole Interface	Ports A,B,P,T	ALUMINUM		DUCTILE IRON	
		Model Code	List Price	Model Code	List Price
Inch	.50 NPTF	YFED-LAN-BC		YFED-LAN-BC/S	
Inch	SAE-10	YFED-LAN-BK		YFED-LAN-BK/S	
Metric	.50 BSPP	YFED-LAN-BV		YFED-LAN-BV/S	



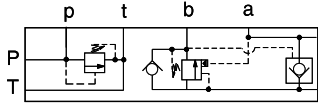
ISO 05 SANDWICH BODIES



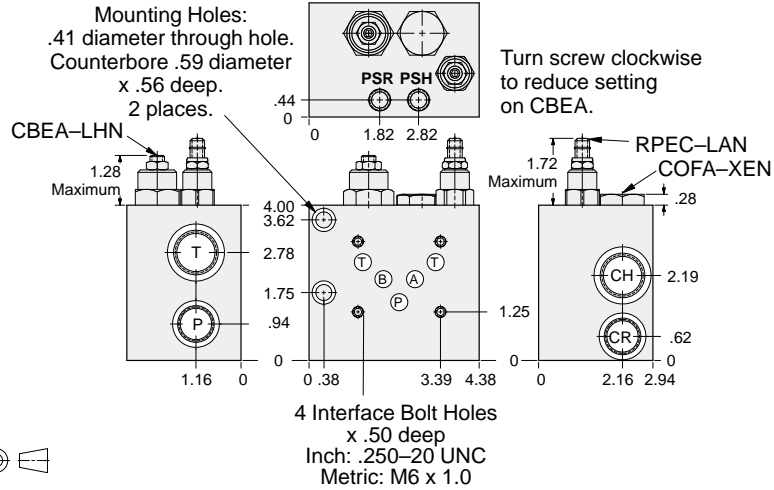
- Aluminum rated to 3000 psi and Ductile Iron rated to 5000 psi.
- See page viii for ordering cartridge/body and seals. Pressure ratings, material specifications on page xiv.

Side Ported Subplates

FUNCTION



A Relief P to T
Regenerative
B to A



Bolt Hole Interface	Ports			ALUMINUM		DUCTILE IRON	
	P,CR	T,CH	PSH,PSR	Model Code	List Price	Model Code	List Price
Inch	.50 NPTF	.75 NPTF	.25 NPTF	YDEM-LHN-BD		YDEM-LHN-BD/S	
Inch	SAE-10	SAE-12	.25 NPTF	YDEM-LHN-BL		YDEM-LHN-BL/S	
Metric	.50 BSPP	.75 BSPP	.25 BSPP	YDEM-LHN-BW		YDEM-LHN-BW/S	

05 SUBPLATE