

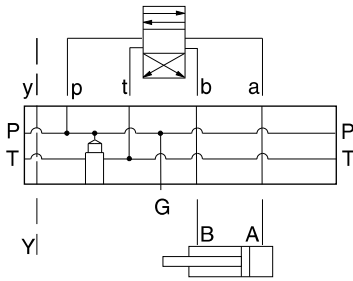


BAR MANIFOLDS



- Aluminum rated to 3000 psi and Ductile Iron rated to 5000 psi.
- See page viii for ordering cartridge/body and seals. Pressure ratings, material specifications on page xiv.

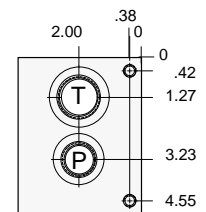
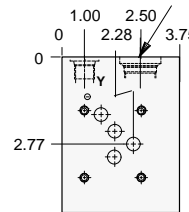
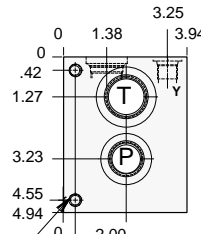
D05 H (U.S.) Parallel Circuit with Relief Cavity and Y Port



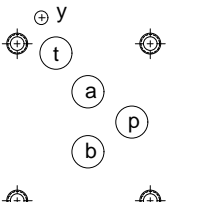
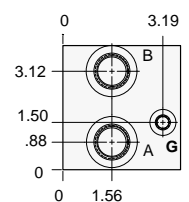
FUNCTION

One Station
(U.S. Version)

T-3A Cavity
Locating Shoulder
Depth .31



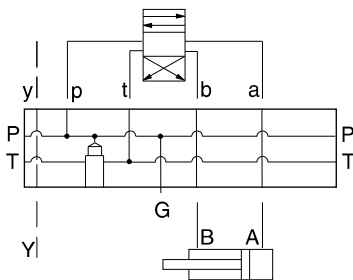
Mounting Holes:
Inch: .375 - 16UNC
x .75 in. Deep.
Metric: M10 x 1.5 - 6H
x .75 in. Deep.
2 places each end



Mounting Holes	Port T	Ports A, B, P	Port Y	Gage Port	ALUMINUM		DUCTILE IRON	
					Model Code	List Price	Model Code	List Price
inch	1.00 NPTF	.75 NPTF	.25 NPTF	.25 NPTF	VMC		VMC/S	
inch	SAE-16	SAE-12	SAE-6	SAE-4	VMJ		VMJ/S	
metric	1.00 BSPP	.75 BSPP	.25 BSPP	.25 BSPP	VMR		VMR/S	

Bar Manifold Mounting Kits to be ordered separately. See page 12.087.

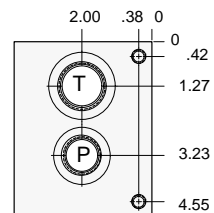
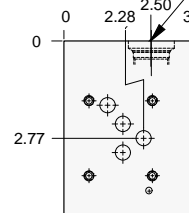
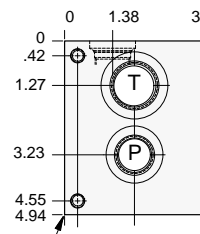
D05 H (CETOP) Parallel Circuit with Relief Cavity and Y Port



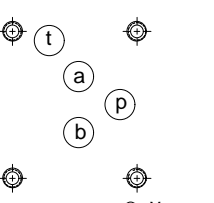
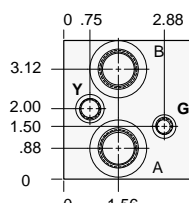
FUNCTION

One Station
(CETOP Version)

T-3A Cavity
Locating Shoulder
Depth .31



Mounting Holes:
Inch: .375 - 16UNC
x .75 in. Deep.
Metric: M10 x 1.5 - 6H
x .75 in. Deep.
2 places each end



Mounting Holes	Port T	Ports A, B, P	Port Y	Gage Port	ALUMINUM		DUCTILE IRON	
					Model Code	List Price	Model Code	List Price
inch	1.00 NPTF	.75 NPTF	.25 NPTF	.25 NPTF	VRE		VRE/S	
inch	SAE-16	SAE-12	SAE-6	SAE-4	VRL		VRL/S	
metric	1.00 BSPP	.75 BSPP	.25 BSPP	.25 BSPP	VRT		VRT/S	

Bar Manifold Mounting Kits to be ordered separately. See page 12.087.

TYPICAL CARTRIDGES USED WITH BODIES SHOWN ABOVE

	Pilot Operated Relief Valve		Direct Acting Relief Valve
	RPGCPage 1.06		RDFA Page 1.10
OTHER VALVES:			

BAR MANIFOLDS

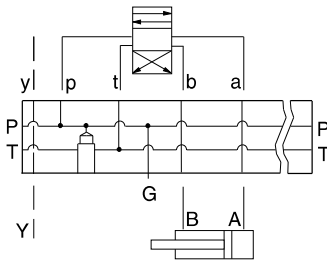


BAR MANIFOLDS



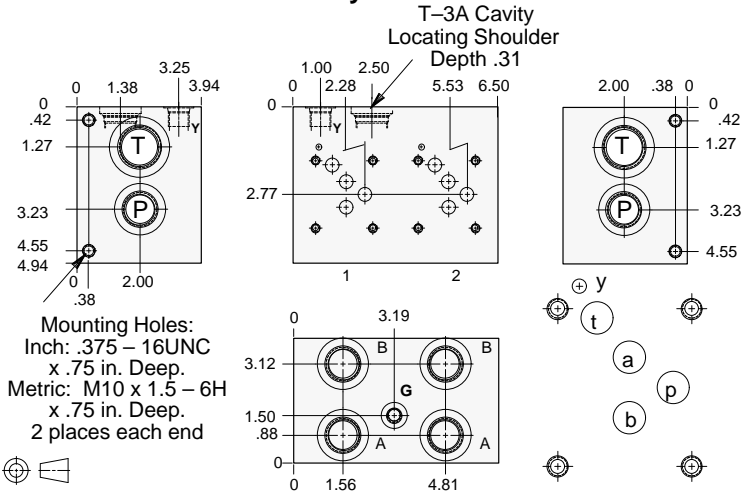
- Aluminum rated to 3000 psi and Ductile Iron rated to 5000 psi.
- See page viii for ordering cartridge/body and seals. Pressure ratings, material specifications on page xiv.

D05 H (U.S.) Parallel Circuit with Relief Cavity and Y Port



FUNCTION

Two Station
(U.S. Version)

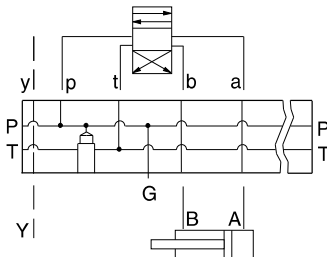


Mounting Holes	Port T	Ports A, B, P	Port Y	Gage Port	ALUMINUM		DUCTILE IRON	
					Model Code	List Price	Model Code	List Price
inch	1.00 NPTF	.75 NPTF	.25 NPTF	.25 NPTF	VMD		VMD/S	
inch	SAE-16	SAE-12	SAE-6	SAE-4	VMK		VMK/S	
metric	1.00 BSPP	.75 BSPP	.25 BSPP	.25 BSPP	VMT		VMT/S	

Bar Manifold Mounting Kits to be ordered separately. See page 12.087.

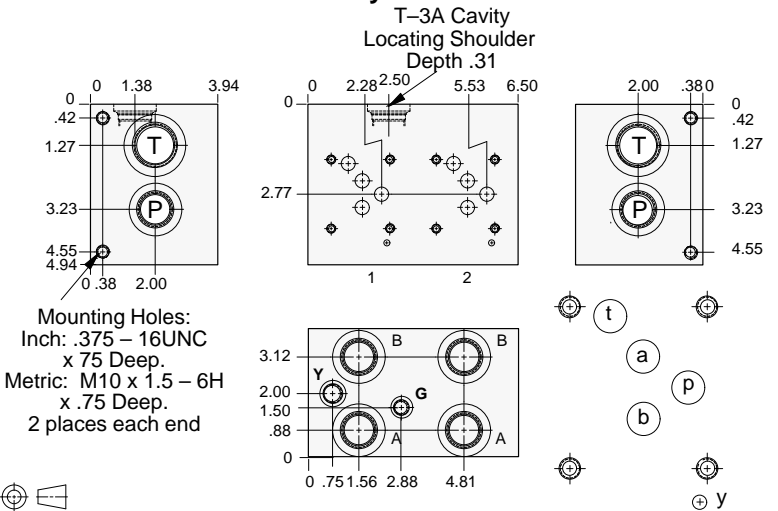
BAR MANIFOLDS

D05 H (CETOP) Parallel Circuit with Relief Cavity and Y Port



FUNCTION

Two Station
(CETOP Version)



Mounting Holes	Port T	Ports A, B, P	Port Y	Gage Port	ALUMINUM		DUCTILE IRON	
					Model Code	List Price	Model Code	List Price
inch	1.00 NPTF	.75 NPTF	.25 NPTF	.25 NPTF	VRF		VRF/S	
inch	SAE-16	SAE-12	SAE-6	SAE-4	VRM		VRM/S	
metric	1.00 BSPP	.75 BSPP	.25 BSPP	.25 BSPP	VRV		VRV/S	

Bar Manifold Mounting Kits to be ordered separately. See page 12.087.

TYPICAL CARTRIDGES USED WITH BODIES SHOWN ABOVE

	Pilot Operated Relief Valve		Direct Acting Relief Valve
	RPGC Page 1.06		RDFA Page 1.10
OTHER VALVES:			

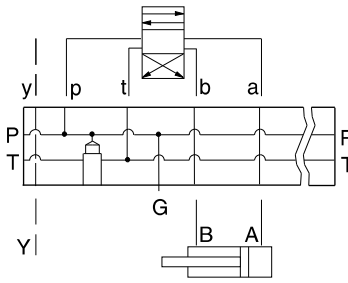


BAR MANIFOLDS



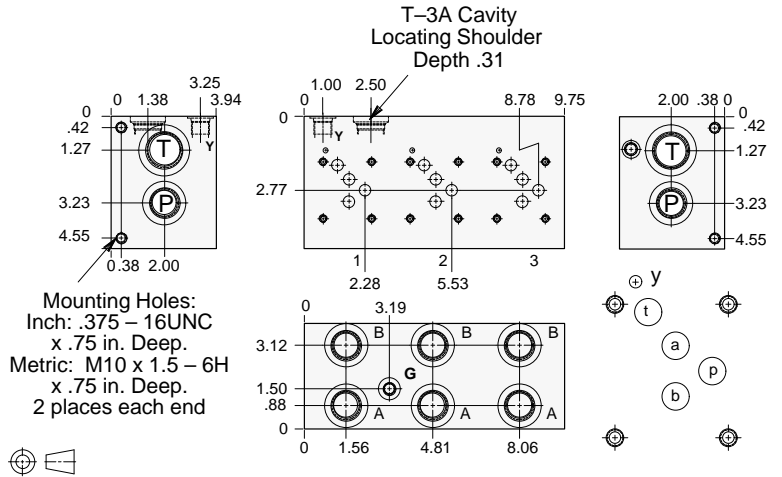
- Aluminum rated to 3000 psi and Ductile Iron rated to 5000 psi.
- See page viii for ordering cartridge/body and seals. Pressure ratings, material specifications on page xiv.

D05 H (U.S.) Parallel Circuit with Relief Cavity and Y Port



FUNCTION

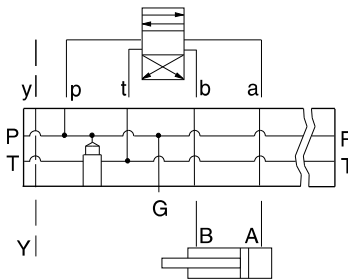
Three Station
(U.S. Version)



Mounting Holes	Port T	Ports A, B, P	Port Y	Gage Port	ALUMINUM		DUCTILE IRON	
					Model Code	List Price	Model Code	List Price
inch	1.00 NPTF	.75 NPTF	.25 NPTF	.25 NPTF	VME		VME/S	
inch	SAE-16	SAE-12	SAE-6	SAE-4	VML		VML/S	
metric	1.00 BSPP	.75 BSPP	.25 BSPP	.25 BSPP	VMW		VMW/S	

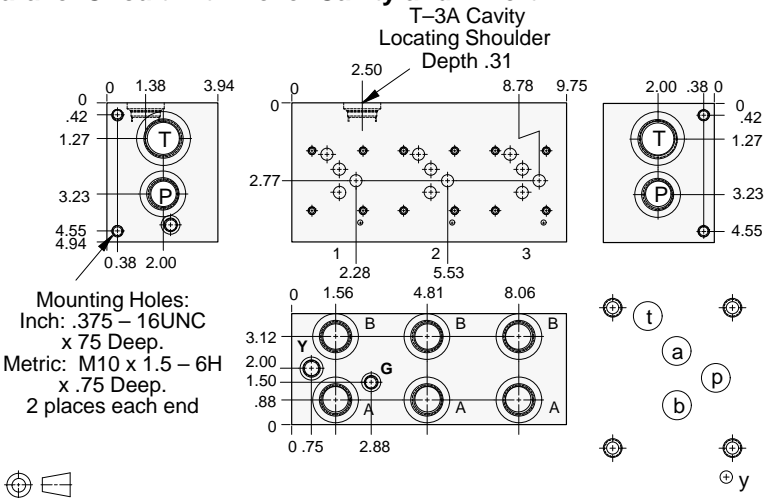
Bar Manifold Mounting Kits to be ordered separately. See page 12.087.

D05 H (CETOP) Parallel Circuit with Relief Cavity and Y Port



FUNCTION

Three Station
(CETOP Version)



Mounting Holes	Port T	Ports A, B, P	Port Y	Gage Port	ALUMINUM		DUCTILE IRON	
					Model Code	List Price	Model Code	List Price
inch	1.00 NPTF	.75 NPTF	.25 NPTF	.25 NPTF	VRG		VRG/S	
inch	SAE-16	SAE-12	SAE-6	SAE-4	VRN		VRN/S	
metric	1.00 BSPP	.75 BSPP	.25 BSPP	.25 BSPP	VRW		VRW/S	

Bar Manifold Mounting Kits to be ordered separately. See page 12.087.

TYPICAL CARTRIDGES USED WITH BODIES SHOWN ABOVE

	Pilot Operated Relief Valve		Direct Acting Relief Valve
	RPGC Page 1.06		RDFA Page 1.10
OTHER VALVES:			

BAR MANIFOLDS

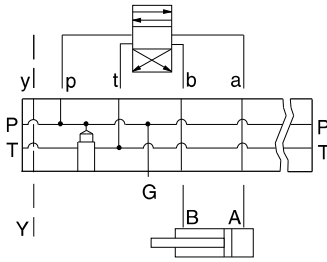


BAR MANIFOLDS



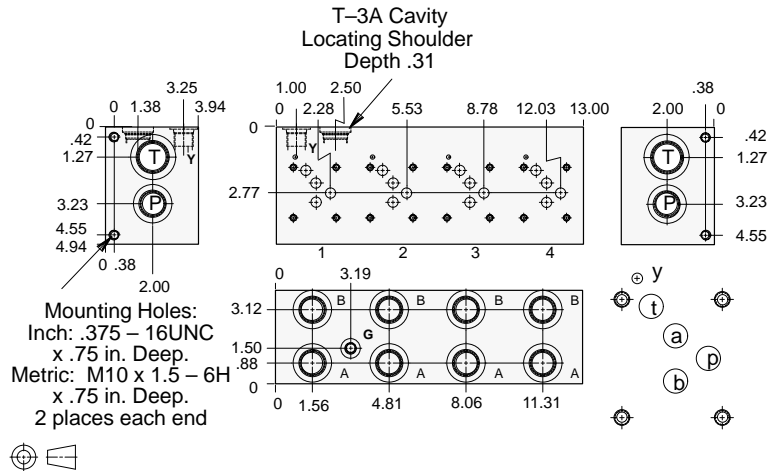
- Aluminum rated to 3000 psi and Ductile Iron rated to 5000 psi.
- See page viii for ordering cartridge/body and seals. Pressure ratings, material specifications on page xiv.

D05 H (U.S.) Parallel Circuit with Relief Cavity and Y Port



FUNCTION

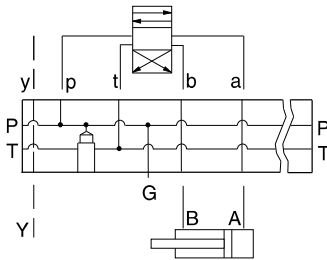
Four Station
(U.S. Version)



Mounting Holes	Port T	Ports A, B, P	Port Y	Gage Port	ALUMINUM		DUCTILE IRON	
					Model Code	List Price	Model Code	List Price
inch	1.00 NPTF	.75 NPTF	.25 NPTF	.25 NPTF	VMF		VMF/S	
inch	SAE-16	SAE-12	SAE-6	SAE-4	VMM		VMM/S	
metric	1.00 BSPP	.75 BSPP	.25 BSPP	.25 BSPP	VMX		VMX/S	

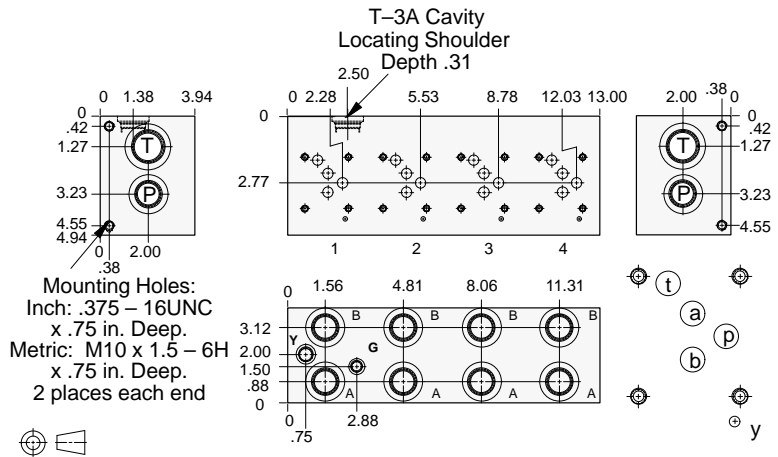
Bar Manifold Mounting Kits to be ordered separately. See page 12.087.

D05 H (CETOP) Parallel Circuit with Relief Cavity and Y Port



FUNCTION

Four Station
(CETOP Version)



Mounting Holes	Port T	Ports A, B, P	Port Y	Gage Port	ALUMINUM		DUCTILE IRON	
					Model Code	List Price	Model Code	List Price
inch	1.00 NPTF	.75 NPTF	.25 NPTF	.25 NPTF	VRH		VRH/S	
inch	SAE-16	SAE-12	SAE-6	SAE-4	VRP		VRP/S	
metric	1.00 BSPP	.75 BSPP	.25 BSPP	.25 BSPP	VRX		VRX/S	

Bar Manifold Mounting Kits to be ordered separately. See page 12.087.

TYPICAL CARTRIDGES USED WITH BODIES SHOWN ABOVE

	Pilot Operated Relief Valve		Direct Acting Relief Valve
	RPGC Page 1.06		RDFA Page 1.10
OTHER VALVES:			

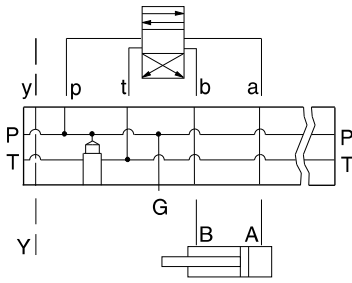


BAR MANIFOLDS



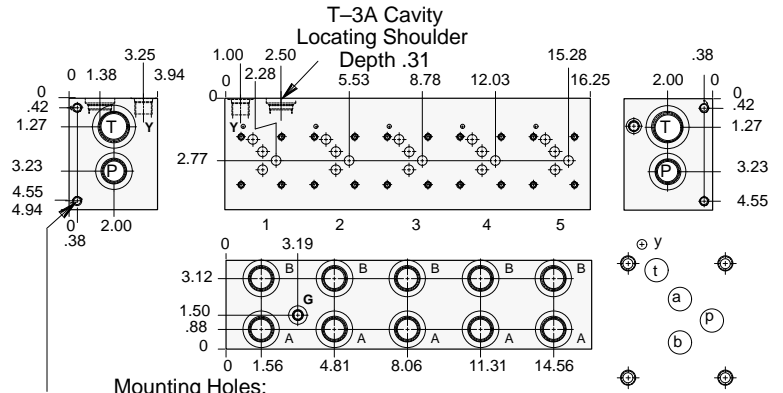
- Aluminum rated to 3000 psi and Ductile Iron rated to 5000 psi.
- See page viii for ordering cartridge/body and seals. Pressure ratings, material specifications on page xiv.

D05 H (U.S.) Parallel Circuit with Relief Cavity and Y Port



FUNCTION

Five Station
(U.S. Version)

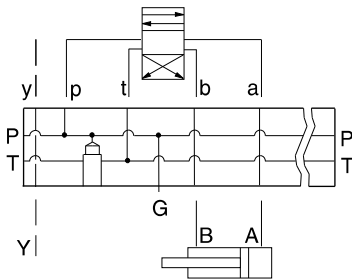


Mounting Holes:
 Inch: .375 – 16UNC x .75 in. Deep.
 Metric: M10 x 1.5 – 6H x .75 in. Deep.
 2 places each end

Mounting Holes	Port T	Ports A, B, P	Port Y	Gage Port	ALUMINUM		DUCTILE IRON	
					Model Code	List Price	Model Code	List Price
inch	1.00 NPTF	.75 NPTF	.25 NPTF	.25 NPTF	VMG		VMG/S	
inch	SAE-16	SAE-12	SAE-6	SAE-4	VMN		VMN/S	
metric	1.00 BSPP	.75 BSPP	.25 BSPP	.25 BSPP	VMY		VMY/S	

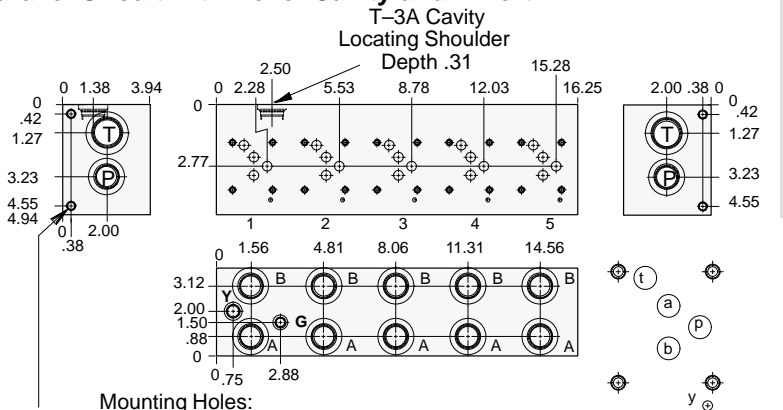
Bar Manifold Mounting Kits to be ordered separately. See page 12.087.

D05 H (CETOP) Parallel Circuit with Relief Cavity and Y Port



FUNCTION

Five Station
(CETOP Version)



Mounting Holes:
 Inch: .375 – 16UNC x .75 in. Deep.
 Metric: M10 x 1.5 – 6H x .75 in. Deep.
 2 places each end

Mounting Holes	Port T	Ports A, B, P	Port Y	Gage Port	ALUMINUM		DUCTILE IRON	
					Model Code	List Price	Model Code	List Price
inch	1.00 NPTF	.75 NPTF	.25 NPTF	.25 NPTF	VRJ		VRJ/S	
inch	SAE-16	SAE-12	SAE-6	SAE-4	VRR		VRR/S	
metric	1.00 BSPP	.75 BSPP	.25 BSPP	.25 BSPP	VRY		VRY/S	

Bar Manifold Mounting Kits to be ordered separately. See page 12.087.

TYPICAL CARTRIDGES USED WITH BODIES SHOWN ABOVE

	Pilot Operated Relief Valve		Direct Acting Relief Valve
	RPGC Page 1.06		RDFA Page 1.10
OTHER VALVES:			

BAR MANIFOLDS